

WETLAND IMPACT SUMMARY										
WETLAND NUMBER	WETLAND CLASSIFICATION	LOCATION		AREA					TEMPORARY IMPACTS	COMMENTS
				PERMANENT IMPACTS			SF			
				N.H.W.B. (NON-WETLAND)	N.H.W.B. & A.C.O.E. (WETLAND)	BANK				
SF	SF	LEFT LF	CHANNEL LF	RIGHT LF	SF					
20	Bank	A	Walpole						9826	
1A	R2UB3	B	Walpole						12452	
20	Bank	C	Walpole	40924		1237				
1A	R2UB3	D	Walpole		48415		1239			
2	R4SB3	E	Walpole						183	
21	Bank	F	Walpole	63845		1502				
			Charlestown	15880		384				
1B	R2UB3	G	Walpole		71206		1475			
			Charlestown		7698		258			
1B	R2UB3	H	Walpole						14574	
			Charlestown						2654	
4	R4SB3	I	Walpole						349	
5A	R4SB3	J	Walpole						278	
7A	R4SB3	K	Walpole						699	
21	Bank	L	Charlestown						1342	
21	Bank	M	Charlestown						1291	
21	Bank	N	Charlestown	956		87				
8	R4SB3	O	Charlestown						115	
10B	PFO/PSS1E	P	Charlestown						1455	
10A	R4SB3	Q	Charlestown						579	
10C	PFO/PSS1E	R	Charlestown						280	
12	R4SB3	S	Charlestown						541	
12	R4SB3	T	Charlestown						217	
12	R4SB3	U	Charlestown		215	20	13	41		
1E	PF01E	V	Charlestown						3344	
1E	PF01E	W	Charlestown		111					
1E	PF01E	X	Charlestown		9059					
1E	PF01E	Y	Charlestown						1357	
1C	POW	Z	Charlestown						417	
1C	POW	AA	Charlestown						4084	
1C	POW	AB	Charlestown		909					
1E	PF01E	AC	Charlestown						32	
1C	POW	AD	Charlestown		3496					
1F	PSS1E	AE	Charlestown		6439					
1F	PSS1E	AF	Charlestown						2266	
1G	PSS1E	AG	Charlestown						305	
1G	PSS1E	AH	Charlestown		1429					
1D	POW	AI	Charlestown						1574	
1D	POW	AJ	Charlestown		4159					
1D	POW	AK	Charlestown						1400	
1D	POW	AL	Charlestown		1079					
1I	PSS/PF01E	AM	Charlestown						4072	
1I	PSS/PF01E	AN	Charlestown		41					
1I	PSS/PF01E	AO	Charlestown		1828					
1I	PSS/PF01E	AP	Charlestown		131					
1I	PSS/PF01E	AQ	Charlestown		20					
22	Bank	AR	Charlestown						475	
N/A	N/A	AS	N/A							Not Used
22	Bank	AT	Charlestown	123		13				
1A	R2UB3	AU	Charlestown						378	
22	Bank	AV	Charlestown						2368	
22	Bank	AW	Charlestown	2449		206				
22	Bank	AX	Charlestown						651	
22	Bank	AY	Charlestown	6778		578				
1A	R2UB3	AZ	Charlestown						17775	
1A	R2UB3	BA	Charlestown		18620	1724				
13A	POW	BB	Charlestown						1096	
22	Bank	BC	Charlestown	8052		590				
22	Bank	BD	Charlestown	8791		553				
22	Bank	BE	Charlestown	340		88				
1J	PEM1E	BF	Charlestown						1305	
1J	PEM1E	BG	Charlestown		8					
1K	PF01E	BH	Charlestown		3917					
1K	PF01E	BI	Charlestown						2798	
15A	R2UB3	BJ	Charlestown						165	
15A	R2UB3	BK	Charlestown		485	37	36	37		
1K	PF01E	BL	Charlestown						2825	
15B	PEM1E	BM	Charlestown						138	
15A	R2UB3	BN	Charlestown						305	
15B	PEM1E	BO	Charlestown						188	
17B	PEM1F	BP	Charlestown						3805	
17B	PEM1F	BQ	Charlestown		155					
18A	PEM1E	BR	Charlestown						1372	
17D	POWH	BS	Charlestown						77	
17B	PEM1F	BT	Charlestown		891					

TOTAL IMPACTS FOR WETLANDS AND SHORELAND PERMITS				
WETLAND IMPACTS		WALPOLE	CHARLESTOWN	TOTAL
PERMANENT NON-WETLAND IMPACTS:	148138 SF	104769	43369	148138
PERMANENT WETLAND IMPACTS:	180311 SF	119621	60690	180311
TEMPORARY IMPACTS:	101405 SF	38361	63044	101405
TOTAL IMPACTS:	429854 SF	282751	167103	429854
	9.87 AC.	6.03	3.84	9.87
STREAM IMPACTS				
PERMANENT IMPACTS TO LEFT BANKS:	5273 LF	2739	2534	5273
PERMANENT IMPACTS TO RIGHT BANKS:	78 LF	0	78	78
PERMANENT IMPACTS TO CHANNEL:	4745 LF	2714	2031	4745
TOTAL STREAM IMPACTS:	10096 LF	5453	4643	10096

AMENDED DECEMBER 2017

SUMMARY OF CHANGES:

- ROW NEGOTIATIONS: DRIVE ADDED AT STA. 2081+50, LT
- ARCHAEOLOGICALLY SENSITIVE AREA: REMOVED DRAINAGE SWALE FROM STA. 2122+00 TO 2128+00
- ROW: REDUCE DRAINAGE EASEMENTS IN RIVER TO ORDINARY HIGH WATER

THESE PLANS MEET THE REQUIREMENTS OF ENV-WT 404, CRITERIA FOR SHORELINE STABILIZATION

SIGN: _____ DATE: _____

WETLANDS DELINEATED BY WILLIAM KURIER, PHD, CWS

BY: _____ DATE: SUMMER 2016

PLANS PREPARED BY:

JACOBS



COMPREHENSIVE ENVIRONMENTAL INCORPORATED

Two Executive Park Drive
Bedford, NH 03110
phone: 1.603.666.7181
fax: 1.603.666.7185
www.jacobs.com

21 DEPOT STREET
MERRIMACK, NH 03054
1.803.424.8444
www.ceiengineers.com

BY: _____ DATE: _____

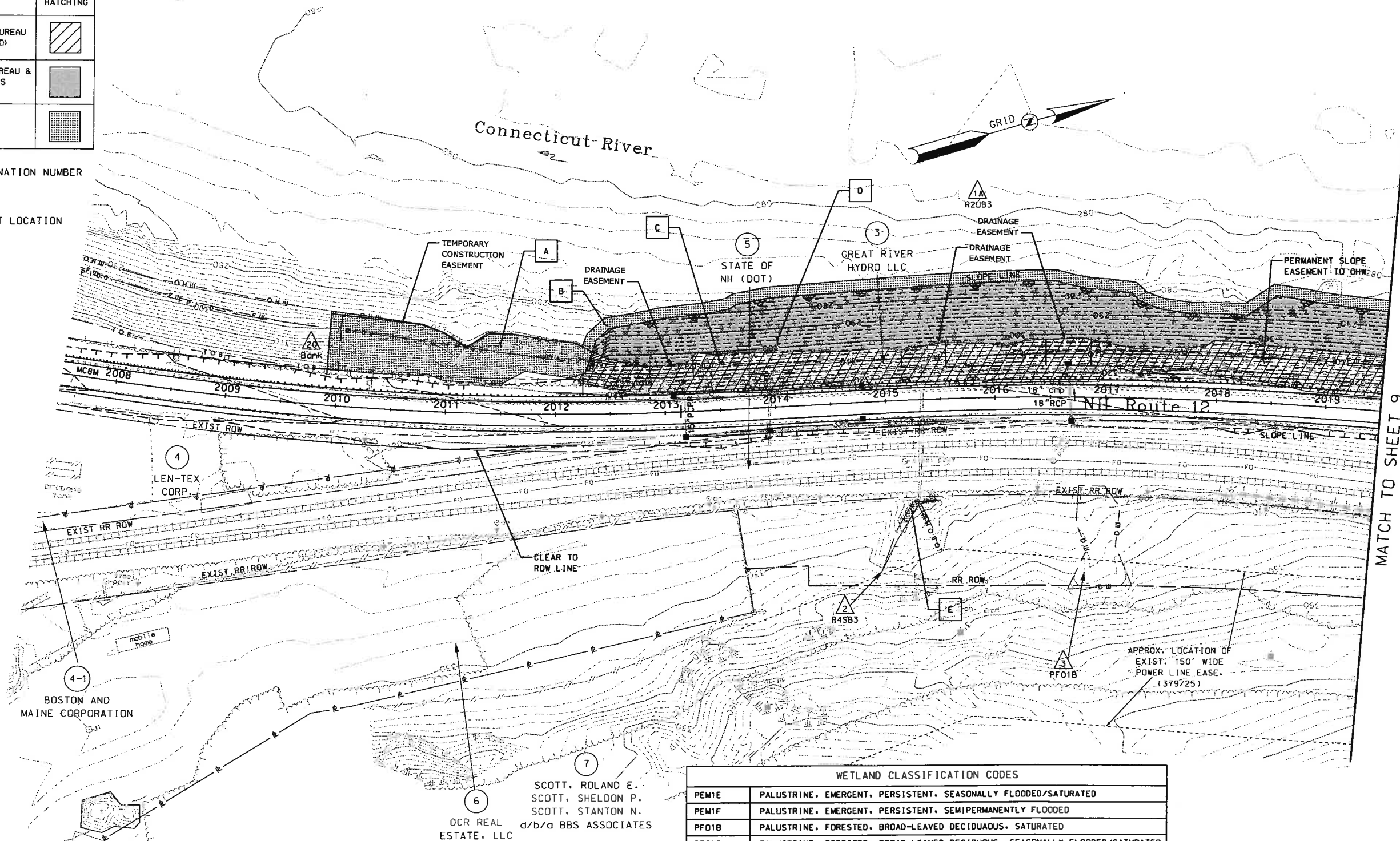
AMENDED
DEC 2017

STATE OF NEW HAMPSHIRE			
DEPARTMENT OF TRANSPORTATION • BUREAU OF HIGHWAY DESIGN			
WETLAND IMPACT SUMMARY			
DGN	STATE PROJECT NO.	SHEET NO.	TOTAL SHEETS
14747ES	14747	7	29

LEGEND

TYPE OF WETLAND IMPACT	SHADING/HATCHING
NEW HAMPSHIRE WETLANDS BUREAU (PERMANENT NON-WETLAND)	
NEW HAMPSHIRE WETLANDS BUREAU & ARMY CORP OF ENGINEERS (PERMANENT WETLAND)	
TEMPORARY IMPACTS	

- WETLAND DESIGNATION NUMBER
- WETLAND IMPACT LOCATION



MATCH TO SHEET 9

REVISIONS AFTER PROPOSAL	DESCRIPTION	STATION	DATE

WETLAND CLASSIFICATION CODES	
PEM1E	PALUSTRINE, EMERGENT, PERSISTENT, SEASONALLY FLOODED/SATURATED
PEM1F	PALUSTRINE, EMERGENT, PERSISTENT, SEMIPERMANENTLY FLOODED
PF01B	PALUSTRINE, FORESTED, BROAD-LEAVED DECIDUOUS, SATURATED
PF01E	PALUSTRINE, FORESTED, BROAD-LEAVED DECIDUOUS, SEASONALLY FLOODED/SATURATED
PF0/PSS1E	PALUSTRINE, FORESTED/PALUSTRINE, SCRUB-SHRUB, BROAD-LEAVED DECIDUOUS, SEASONALLY FLOODED/SATURATED
POW	PALUSTRINE, OPEN WATER/UNKNOWN BOTTOM
POWH	PALUSTRINE, OPEN WATER/UNKNOWN BOTTOM, PERMANENTLY FLOODED
PSS1E	PALUSTRINE, SCRUB-SHRUB, BROAD-LEAVED DECIDUOUS, SEASONALLY FLOODED/SATURATED
PSS/PEM1E	PALUSTRINE, SCRUB-SHRUB/PALUSTRINE EMERGENT, PERSISTENT, SEASONALLY FLOODED/SATURATED
PSS/PF01E	PALUSTRINE, SCRUB-SHRUB/PALUSTRINE, FORESTED, BROAD-LEAVED DECIDUOUS, SEASONALLY FLOODED/SATURATED
R2UB3	RIVERINE, LOWER PERENNIAL, UNCONSOLIDATED BOTTOM, MUD
R3UB1	RIVERINE, UPPER PERENNIAL, UNCONSOLIDATED BOTTOM, ALGAL
R4SB3	RIVERINE, INTERMITTENT, STREAMBED, COBBLE GRAVEL
BANK	BANK



STATE OF NEW HAMPSHIRE
DEPARTMENT OF TRANSPORTATION • BUREAU OF HIGHWAY DESIGN

WETLAND IMPACT PLAN

MODEL	DGN	STATE PROJECT NO.	SHEET NO.	TOTAL SHEETS
WET02	14747wetplans	14747	8	29

PLANS PREPARED BY:

JACOBS **COMPREHENSIVE ENVIRONMENTAL INCORPORATED**

Two Executive Park Drive
Bedford, NH 03110
phone: 1.603.666.7181
fax: 1.603.666.7185
www.jacobs.com

21 DEPOT STREET
MERRIMACK, NH 03054
1.603.424.8444
www.ceiengineers.com

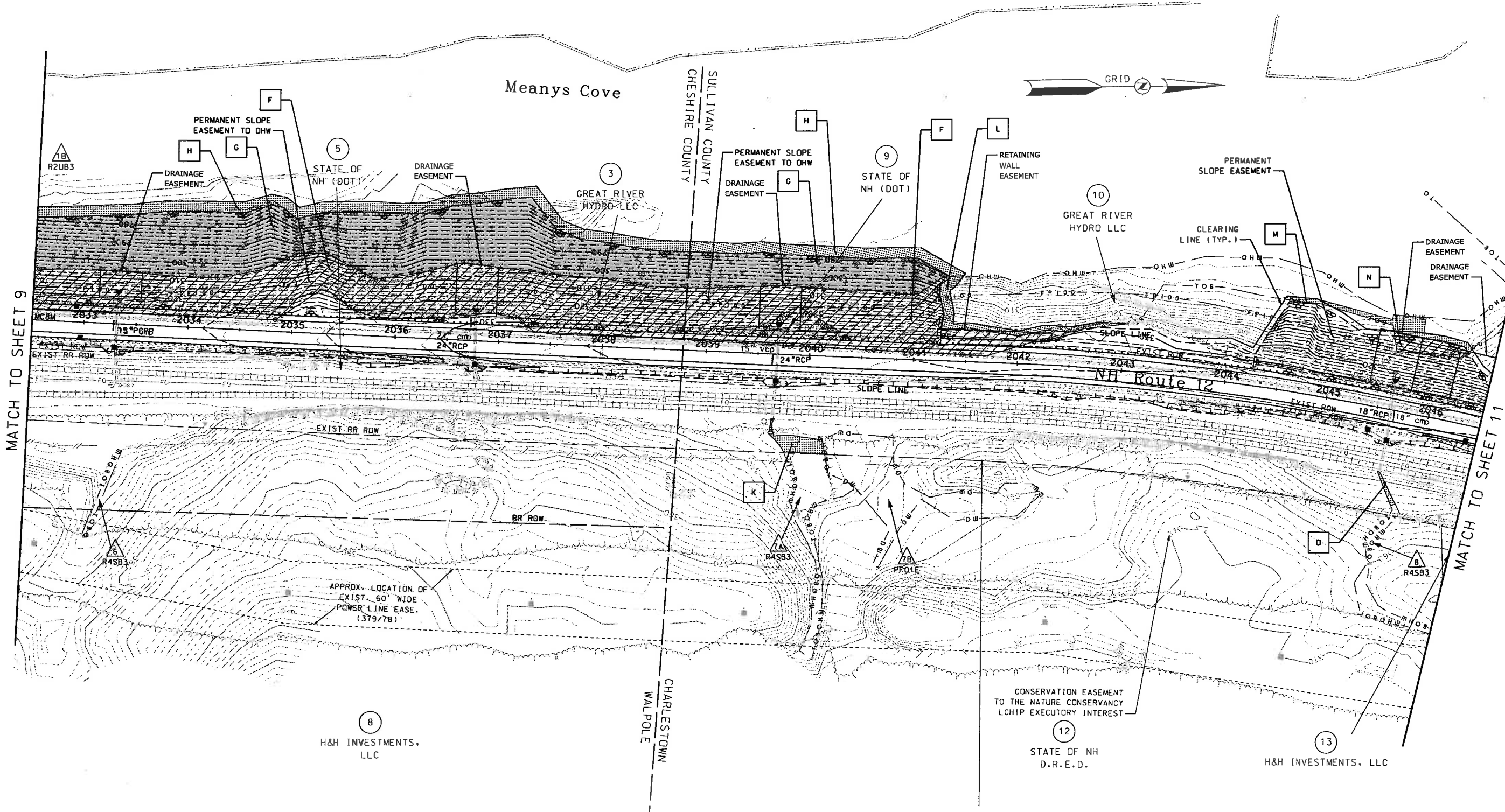
BY: _____ DATE: _____

AMENDED
DEC 2017

FILED IN: 14747 WETLAND IMPACT PLAN, SHEET 8 OF 29, DATE 12/21/2017, PROJECT NO. 14747, DRAWING NO. 14747WETPLANS

SDR PROCESSED	S. GUNN	DATE	12/21/2017
NEW DESIGN	A. SEAMAN	DATE	12/21/2017
SHEET CHECKED	C. MERCER	DATE	12/21/2017
AS BUILT DETAILS		DATE	

**AMENDED
DEC 2017**



PLANS PREPARED BY:

JACOBS

Two Executive Park Drive
Bedford, NH 03110
phone: 1.603.666.7181
fax: 1.603.666.7185
www.jacobs.com

COMPREHENSIVE ENVIRONMENTAL INCORPORATED

21 DEPOT STREET
MERRIMACK, NH 03054
1.603.424.8444
www.ceiengineers.com

BY: _____ DATE: _____

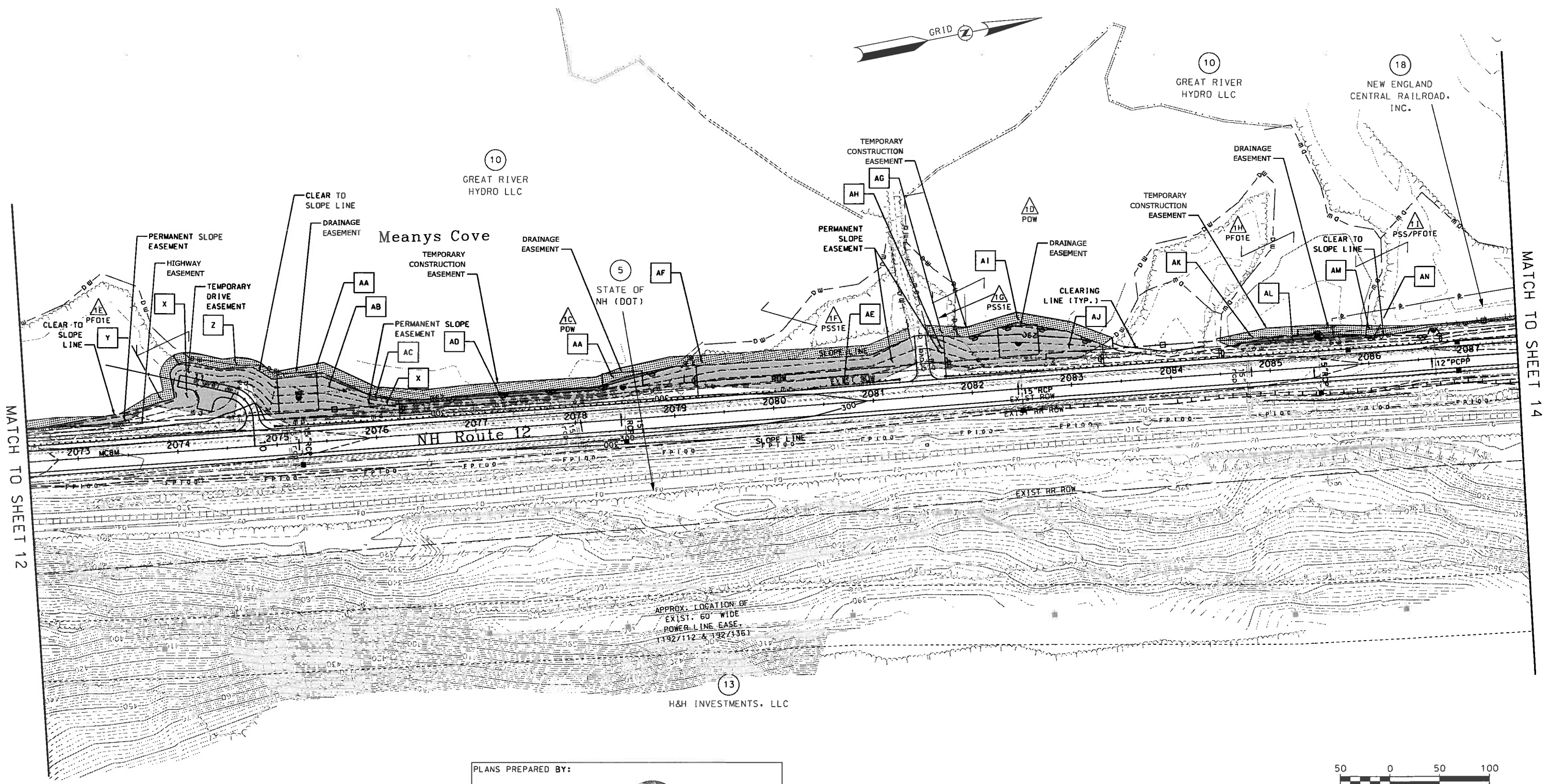


STATE OF NEW HAMPSHIRE
DEPARTMENT OF TRANSPORTATION • BUREAU OF HIGHWAY DESIGN

WETLAND IMPACT PLAN

MODEL	DGN	STATE PROJECT NO.	SHEET NO.	TOTAL SHEETS
WET04	14747wetplans	14747	10	29

SDR PROCESSED	S. GUNN	DATE	12/21/2017
NEW DESIGN	A. SEAMAN	DATE	12/21/2017
SHEET CHECKED	C. MERCER	DATE	12/21/2017
AS BUILT DETAILS		DATE	



MATCH TO SHEET 12

MATCH TO SHEET 14

**AMENDED
DEC 2017**

PLANS PREPARED BY:

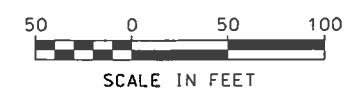
JACOBS

Two Executive Park Drive
Bedford, NH 03110
phone: 1.603.666.7181
fax: 1.603.666.7185
www.jacobs.com

CEI COMPREHENSIVE ENVIRONMENTAL INCORPORATED

21 DEPOT STREET
MERRIMACK, NH 03054
1.803.424.8444
www.ceiengineers.com

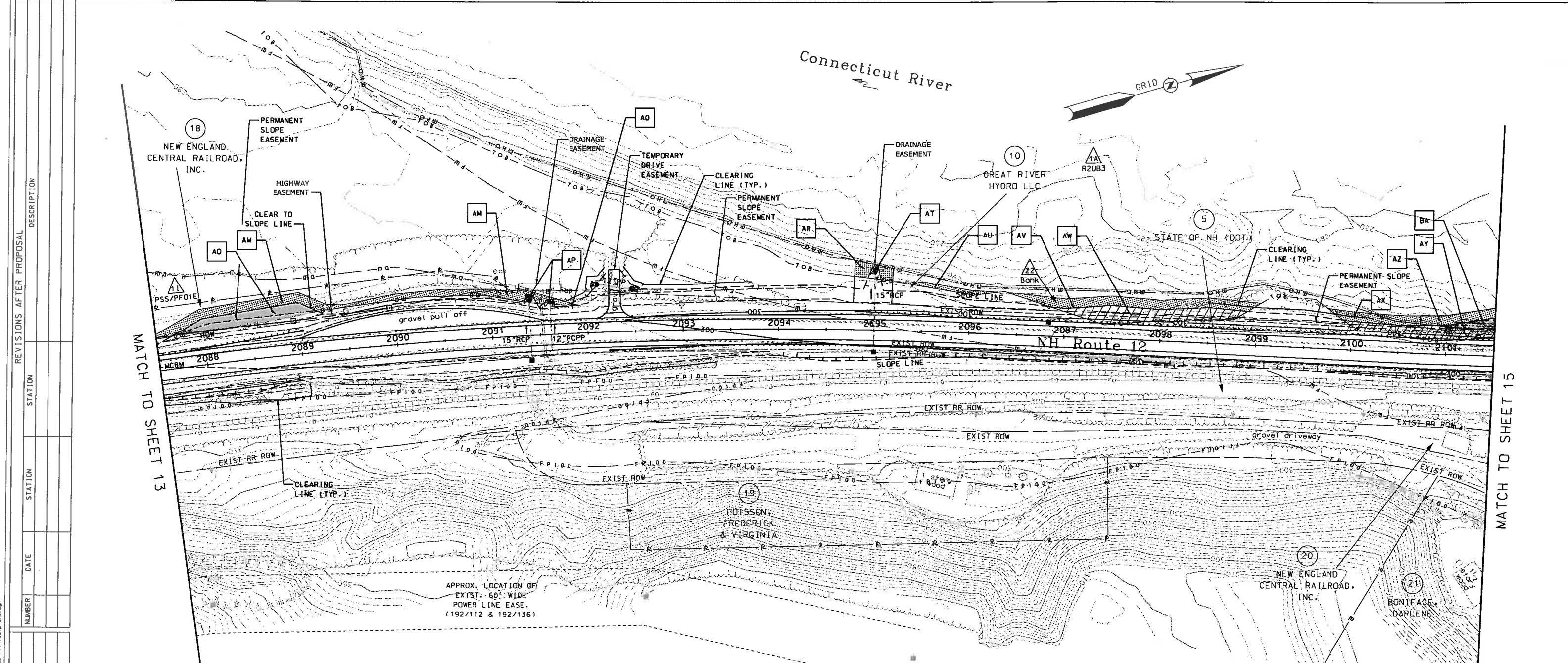
BY: _____ DATE: _____



STATE OF NEW HAMPSHIRE
DEPARTMENT OF TRANSPORTATION • BUREAU OF HIGHWAY DESIGN

WETLAND IMPACT PLAN


MODEL	DCN	STATE PROJECT NO.	SHEET NO.	TOTAL SHEETS
WET07	14747wetplans	14747	13	29



REVISIONS AFTER PROPOSAL	STATION	DATE	DESCRIPTION

**AMENDED
DEC 2017**

PLANS PREPARED BY:

JACOBS  **COMPREHENSIVE ENVIRONMENTAL INCORPORATED**

Two Executive Park Drive
Bedford, NH 03110
phone: 1.603.666.7181
fax: 1.603.666.7185
www.jacobs.com

21 DEPOT STREET
MERRIMACK, NH 03054
1.603.424.8444
www.celengineers.com

BY: _____ DATE: _____



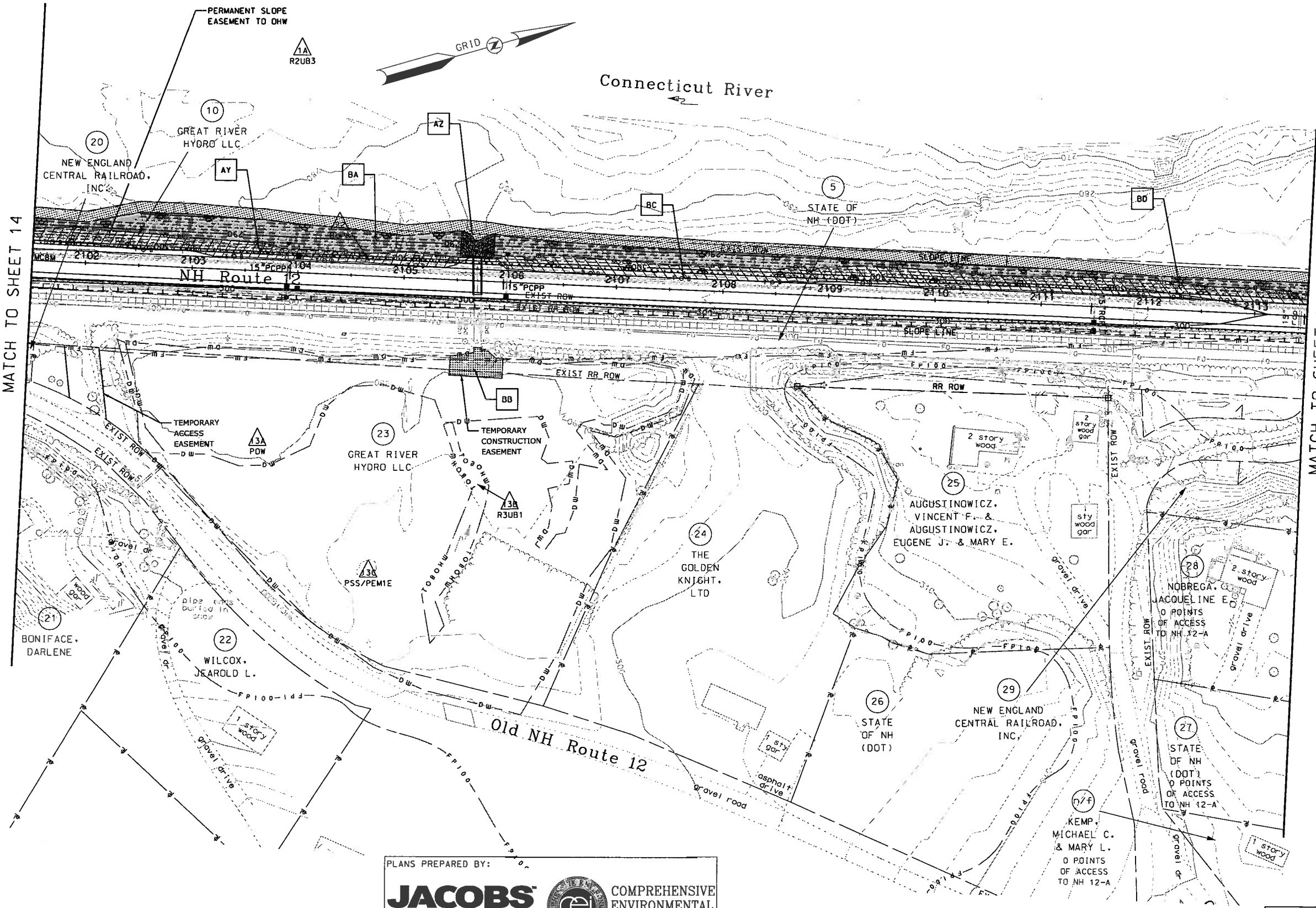
STATE OF NEW HAMPSHIRE
DEPARTMENT OF TRANSPORTATION • BUREAU OF HIGHWAY DESIGN

WETLAND IMPACT PLAN

MODEL	DGN	STATE PROJECT NO.	SHEET NO.	TOTAL SHEETS
WET08	14747wetplans	14747	14	29

MATCH TO SHEET 14


MATCH TO SHEET 16



REVISIONS AFTER PROPOSAL	STATION	DATE	DESCRIPTION

**AMENDED
DEC 2017**

PLANS PREPARED BY:

JACOBS  **COMPREHENSIVE ENVIRONMENTAL INCORPORATED**

Two Executive Park Drive
Bedford, NH 03110
phone: 1.603.666.7181
fax: 1.603.666.7185
www.jacobs.com

21 DEPOT STREET
MERRIMACK, NH 03054
1.603.424.8444
www.celengineers.com

BY: _____ DATE: _____



STATE OF NEW HAMPSHIRE
DEPARTMENT OF TRANSPORTATION • BUREAU OF HIGHWAY DESIGN

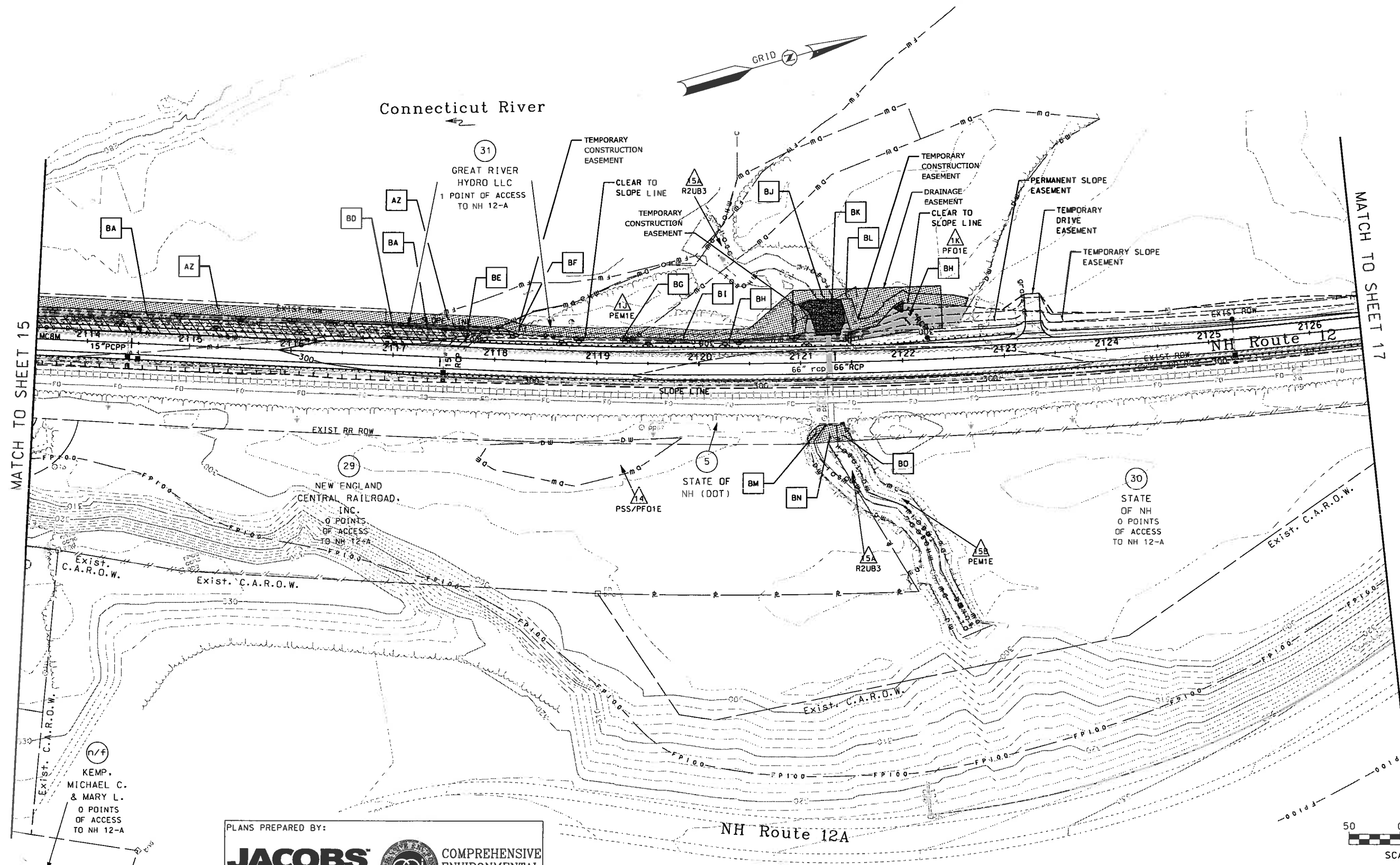
WETLAND IMPACT PLAN

MODEL	DCN	STATE PROJECT NO.	SHEET NO.	TOTAL SHEETS
WET09	14747wetplans	14747	15	29

FILED: MERRIMACK COUNTY, NEW HAMPSHIRE, 12/21/2017, 10:00 AM, 14747 WETPLANS

SDR PROCESSED	DATE
S. GUNN	12/21/2017
NEW DESIGN	DATE
A. SEAMAN	12/21/2017
SHEET CHECKED	DATE
C. MERCER	12/21/2017
AS BUILT DETAILS	DATE

SDR PROCESSED	S. CUNN	DATE	12/21/2017
NEW DESIGN	A. SEAMAN	DATE	12/21/2017
SHEET CHECKED	C. MERCER	DATE	12/21/2017
AS BUILT DETAILS		DATE	



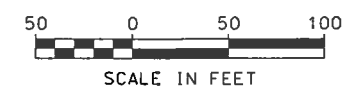
PLANS PREPARED BY:

JACOBS
 Two Executive Park Drive
 Bedford, NH 03110
 phone: 1.603.666.7181
 fax: 1.603.666.7185
 www.jacobs.com

COMPREHENSIVE ENVIRONMENTAL INCORPORATED
 21 DEPOT STREET
 MERRIMACK, NH 03054
 1.603.424.8444
 www.celengineers.com

BY: _____ DATE: _____

AMENDED
DEC 2017



STATE OF NEW HAMPSHIRE
 DEPARTMENT OF TRANSPORTATION • BUREAU OF HIGHWAY DESIGN

WETLAND IMPACT PLAN

MODEL	DGN	STATE PROJECT NO.	SHEET NO.	TOTAL SHEETS
WET10	14747wetplans	14747	16	29