

# Jaffrey 16307 US 202, Dog-Leg Improvements

Public Informational Meeting  
March 19, 2024



# Introductions & Agenda

Tobey Reynolds – NHDOT,  
Project Manager

Dan Prehemo – NHDOT,  
Roadway Design Lead

Chuck Gregory – VHB,  
Project Manager

Mark Suennen – VHB,  
Traffic Engineer

Karen Fitzgerald – Toole Design

## Agenda

- Overview of Major Elements
- What has been happening
- New Bridge
- Town Coordination
- Interpretive Panels
- Construction Phasing
- Schedule
- Communication during Construction



# Current Plan



# What has been Happening

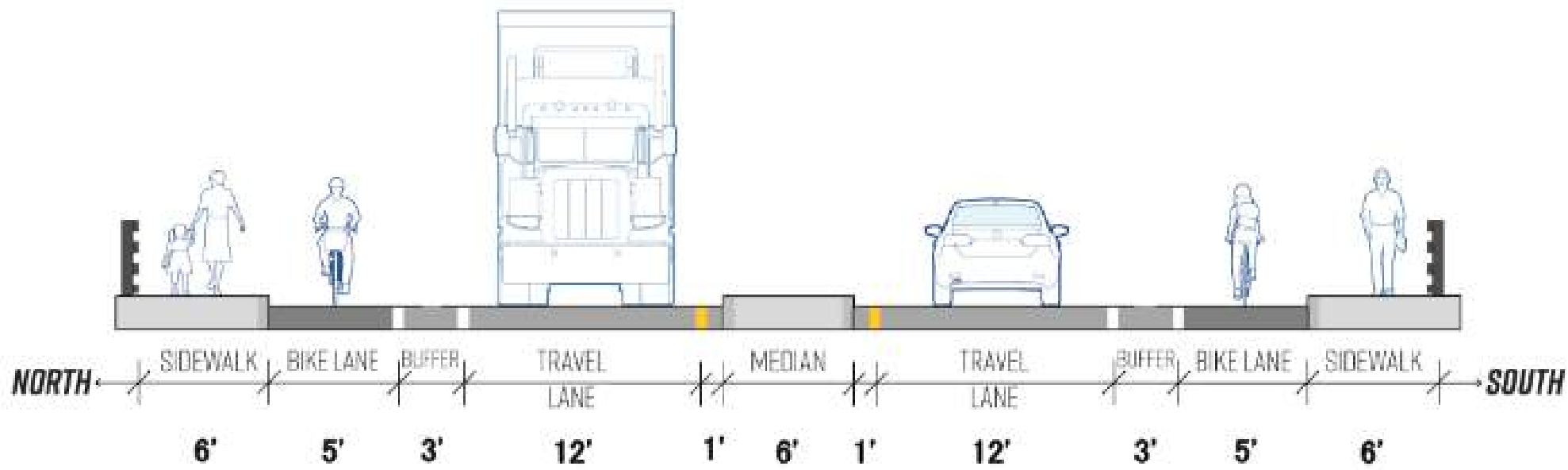
- Right-of-Way Discussions with Property Owners
- Adjusting Plans to Reduce Utility Impacts Where Possible (Water, Sewer, Power, and Telephone)
- Coordinating with Town staff and Town's Consultant (Toole Design) on landscaping improvements
- Developing Roadway and Bridge Plans along with the other Contract Documents
- Environmental Permitting

# US 202 Bridge

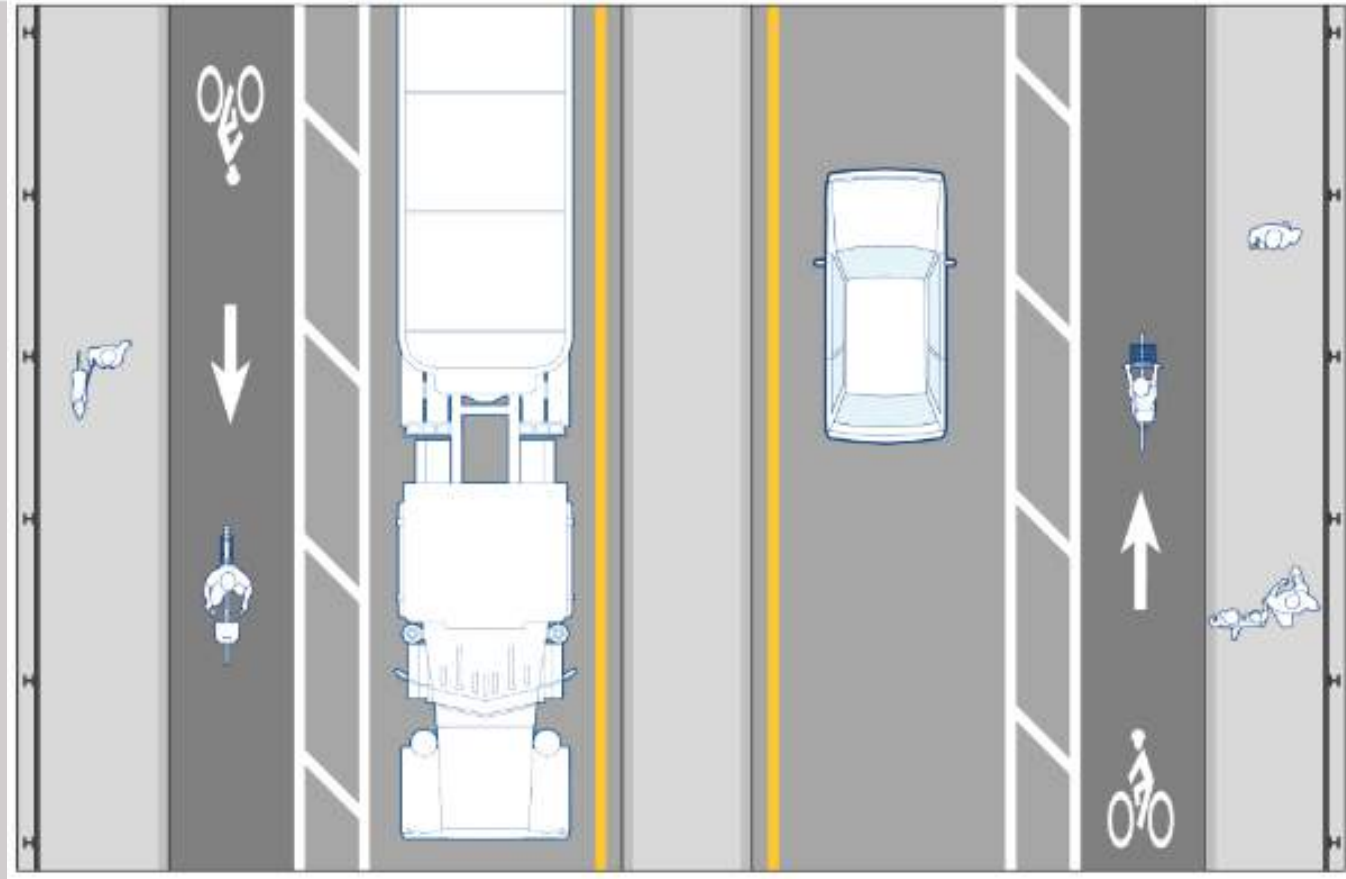
- Black Bridge Rail
- Concrete Pilasters
- Ornamental Lights



# Town Input on Cross-Section for US 202 Connector

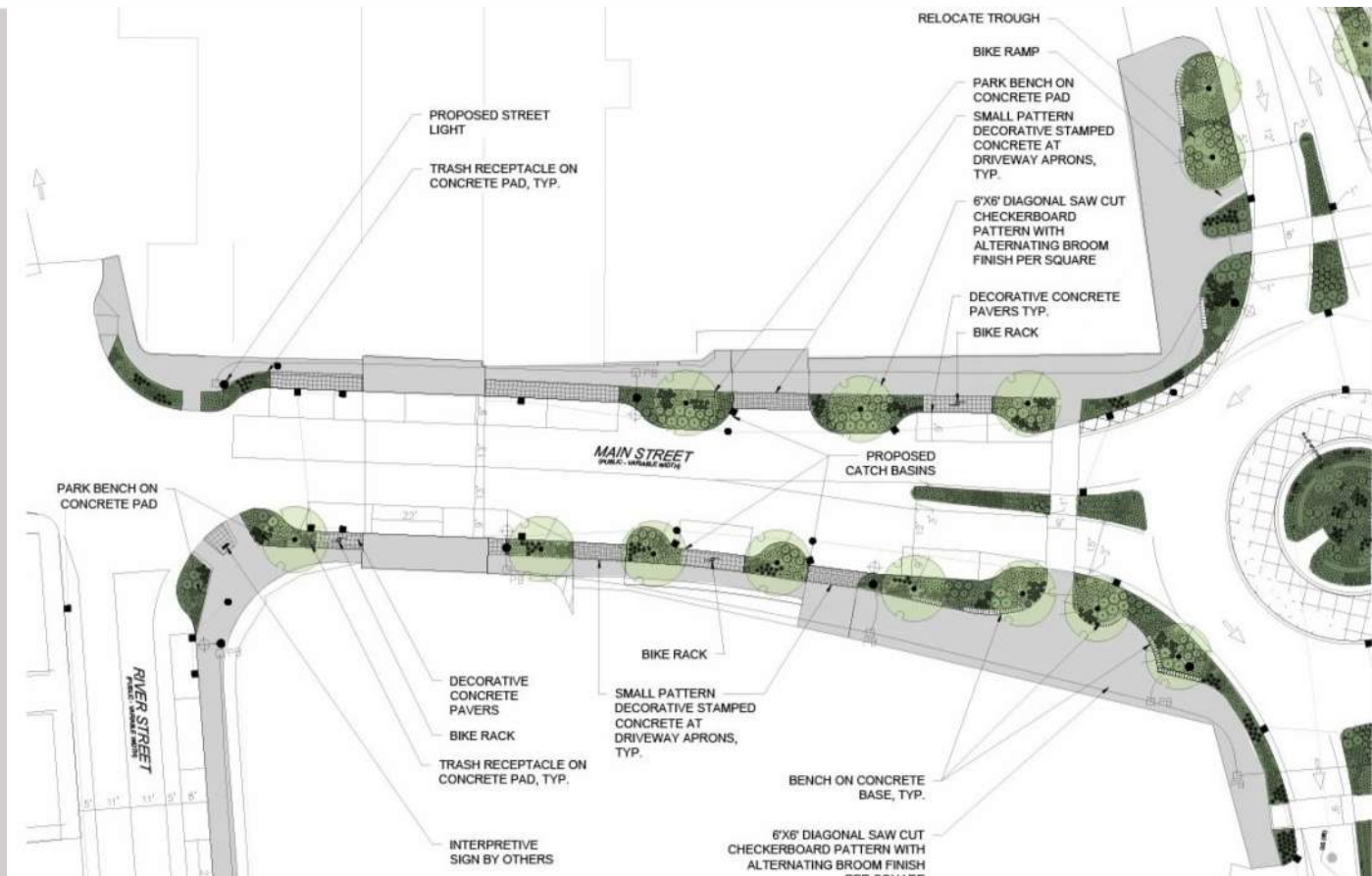


# Town Input on Cross-Section for US 202 Connector





# Main Street Sidewalks and Bump Outs





## Slide 8

---

**BLO** Need to remove decorative stamped concrete on bridge sidewalk  
Bob Landry, 2024-03-15T11:06:30.321

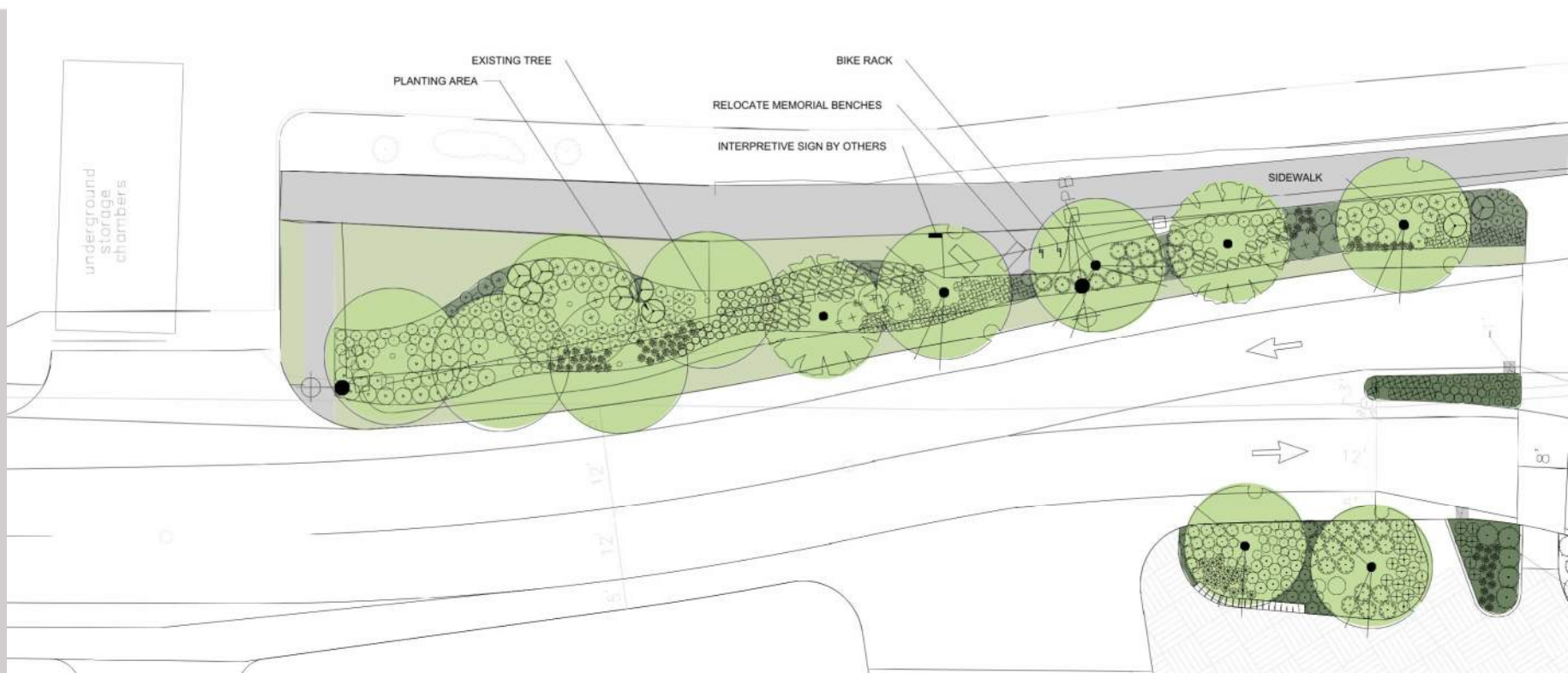
**CGO 0** Yes. I have noted this in our comments. Will share these slides and discuss with them today.  
Chuck Gregory, 2024-03-15T11:26:21.895

# Welcome Plaza





# Peterborough Street





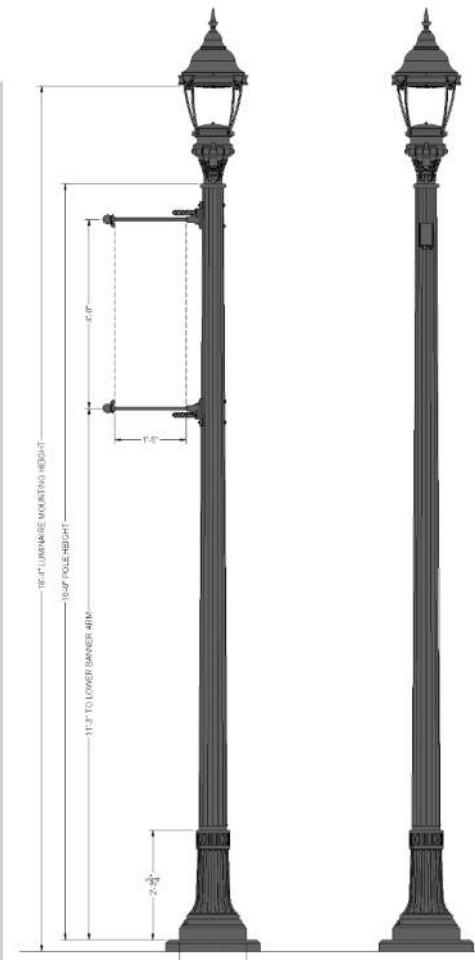
# Town Input on Lighting

Ornamental Sidewalk  
Lights as Requested  
by the Town



Architectural lighting - with high outlets  
underground all utilities

Light Assemblies - Types A, B, & C




# Interpretive Panels


## 3 Panels

- Historic and Extant Contoocook River Crossings
- Transportation History
- Residential Architecture/ Neighborhoods


## Manchester & Lawrence Railroad



B&M No. 42 at Lawrence, Mass., ca. 1890. Courtesy Boston & Maine Railroad Historical Society Archives.



Derry, NH depot, ca. 1965. Courtesy Boston & Maine Railroad Historical Society Archives, Whitney Collection.




**July 31, 1847**  
The 22.29-mile New Hampshire portion of the Manchester & Lawrence Railroad (M&L) is chartered.

**1848**  
Construction begins and proceeds southward.

**November 13, 1849**  
The M&L Railroad opens for passengers.

**January 1, 1850**  
Freight trains start running.

**September 1, 1887**  
The Boston & Maine Railroad (B&M) assumes control of the M&L.



Train Detail of Manchester and Maine Railroad, 1915. Reprinted by permission of the Boston & Maine Railroad.

**1902**  
The railroad in Salem is supplemented by an electric trolley, which runs streetcars from Lawrence, Haverhill, Pelham, Lowell and Nashua to the system's amusement park, Canobie Lake Park.

**1920s**  
The buses of the Boston & Maine Transportation Co. begin taking over some of the lesser patronized train runs.

**Late 1930s**  
Regular passenger service dwindles to a single, self-propelled car, which makes one roundtrip each day.

**1932-1936**  
In 1932 the M&L offers six weekday and two Sunday roundtrips by train. Soon thereafter the Sunday morning train is eliminated and by April 1936, buses have replaced all but one of the weekday trips.

**April 1949**  
The Sunday afternoon roundtrip passenger train is eliminated, leaving only a single round-trip commuter train in the work week.

**July 1953**  
Regular passenger service ends.

**Early 1980s**  
The nine-mile section between Salem and Derry is abandoned, severing the line into two segments, and the rails are removed for salvage.

**1986**  
The section between Derry and a point in Londonderry south of Manchester International Airport (formerly Grenier Air Force Base) is abandoned.

**Late 1990s**  
The City of Manchester removes track for the extension of the main runway at the airport.

**May 2000**  
Guilford Transportation is granted permission to abandon the remaining northern part of the M&L, and additional track in Salem is also removed without waiting for formal abandonment.

**2000s and beyond**  
The former M&L rail corridor is redeveloped in stages as the southern section of the Granite State Rail Trail, extending from the MA state line in Salem, NH all the way to Lebanon, NH.

### History of the Manchester & Lawrence Railroad

Regular passenger service on the Manchester & Lawrence Railroad began in 1849 and operated until 1953, with local freight service active into the 1990s. The New Hampshire portion of the railroad carried trains north from the Massachusetts border through Salem, Windham, Derry, and Londonderry before reaching its terminus in Manchester. Elements of the railroad along the route included stations, depots, freight houses, bridges, culverts, cattle passes, and other structures, many of which are still extant. Today, the rails and ties have been removed along the majority of the Manchester & Lawrence corridor, and portions of the rail bed have been redeveloped as a recreational rail trail.

◀ B&M No. 1361 approaching Windham, NH depot, 1912-1913. Courtesy Boston & Maine Railroad Historical Society Archives.

### Interpretive Panel Example from Another Recent Project

produced in cooperation with the New Hampshire Department of Transportation, the Historical Resources, the Federal Highway Administration, and the City of Manchester, 206 of the National Historic Preservation Act for the removal of a historic stone box (Cohas Brook Trestle Bridge. Text by VHS, 2022.

# Jaffrey War Memorial Park



# Construction Schedule

- Construction Duration: 3 years plus 2 months
- Maintain Access to Homes and Businesses Throughout
- Maintain Pedestrian Access Throughout
- No Night Work

With that said, the NHDOT will coordinate with Owners when work is being completed in front of their property and times when access may be limited for safety to complete the work.

Such as a sidewalk in front of businesses and/or constructing driveway tie-ins at the street in front of homes and businesses.



# Construction Schedule

Existing Traffic Movements

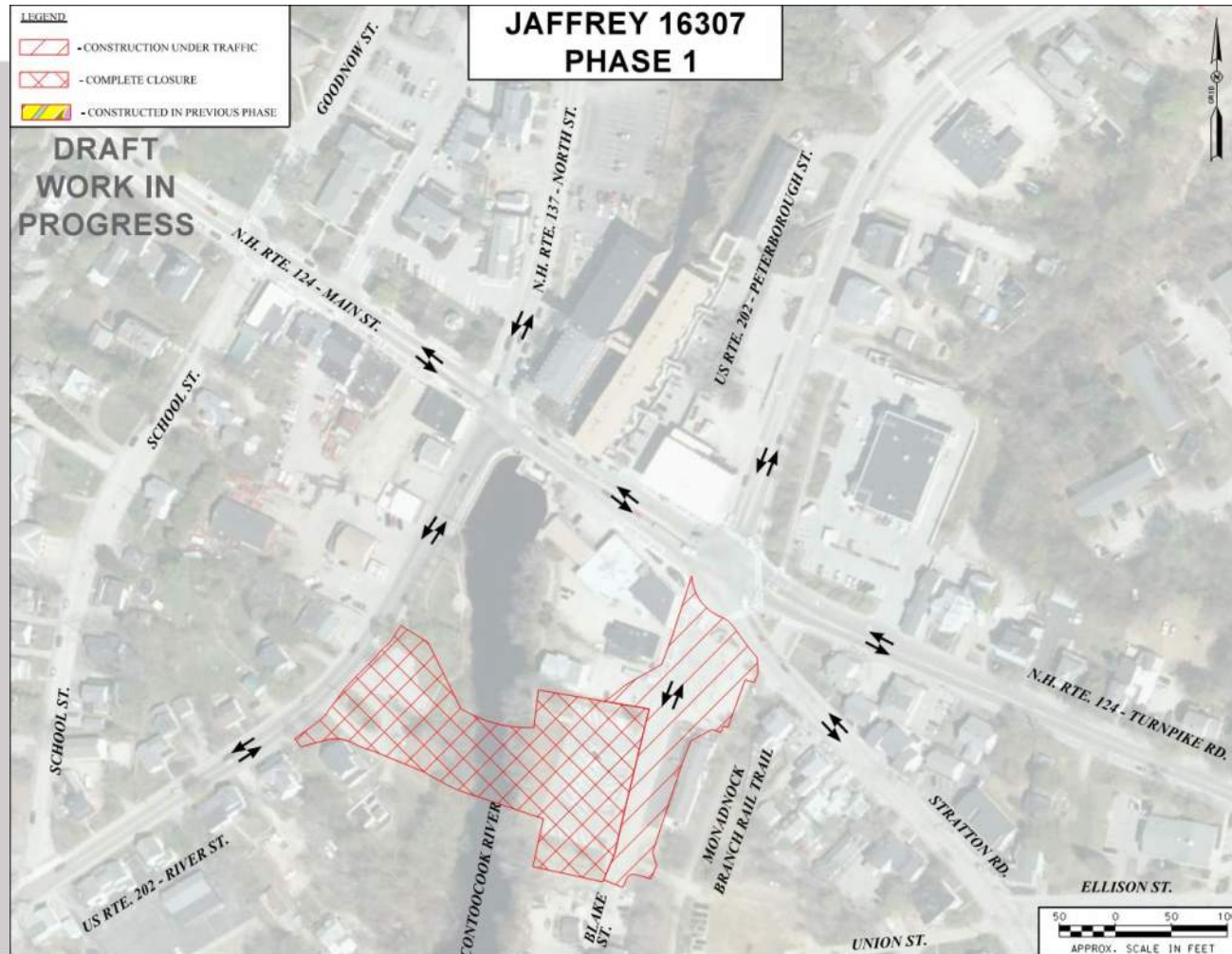
Schedule

3 Years & 2 Months  
Construction April  
2025 to May 2028



# Construction Schedule Phase 1

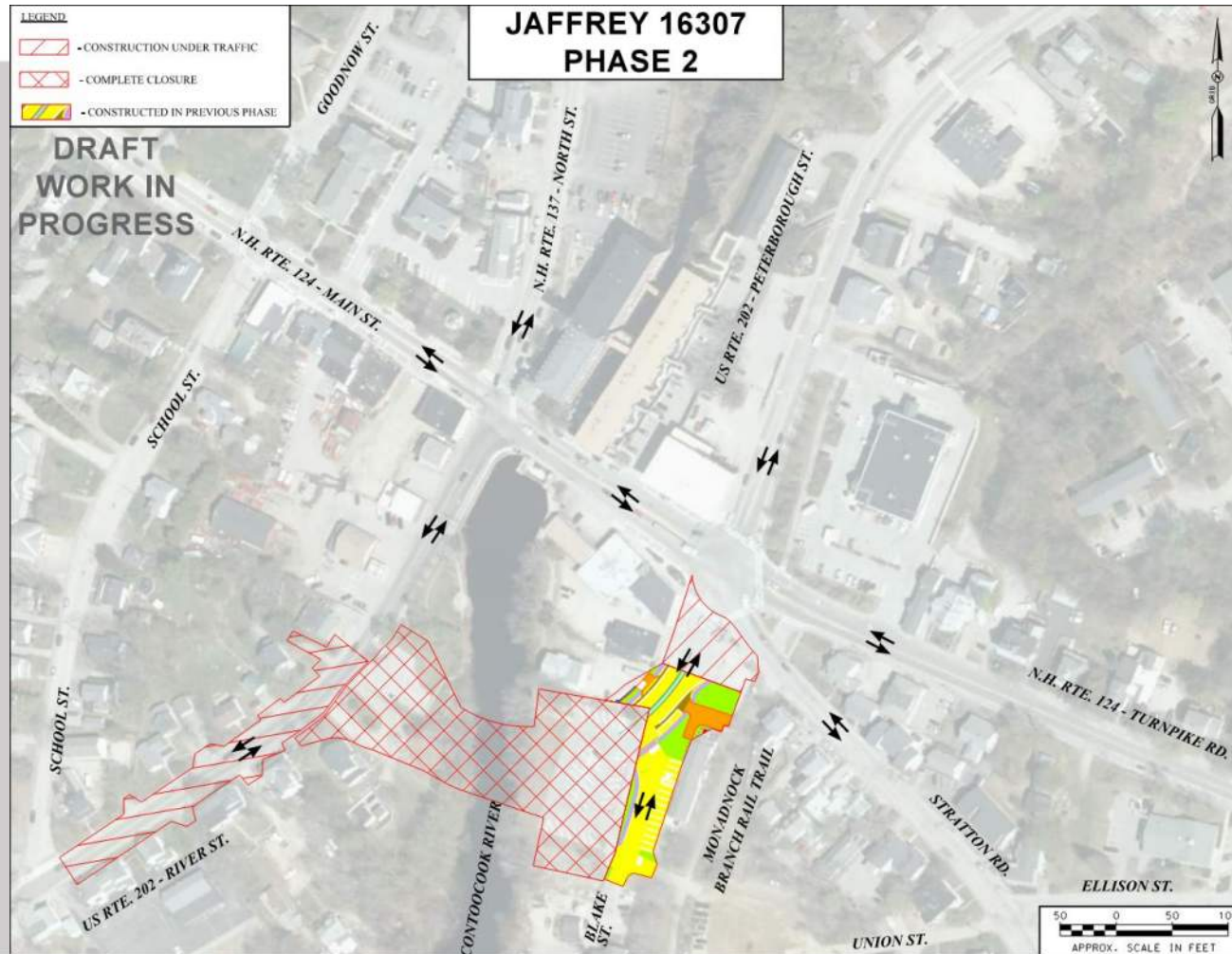
Nov 2024, Contractor Approval by G&C  
April 2025 thru June 2025,  
US 202 Bridge and Blake Street Improvements  
Closure of the Blake Street Parking Lot





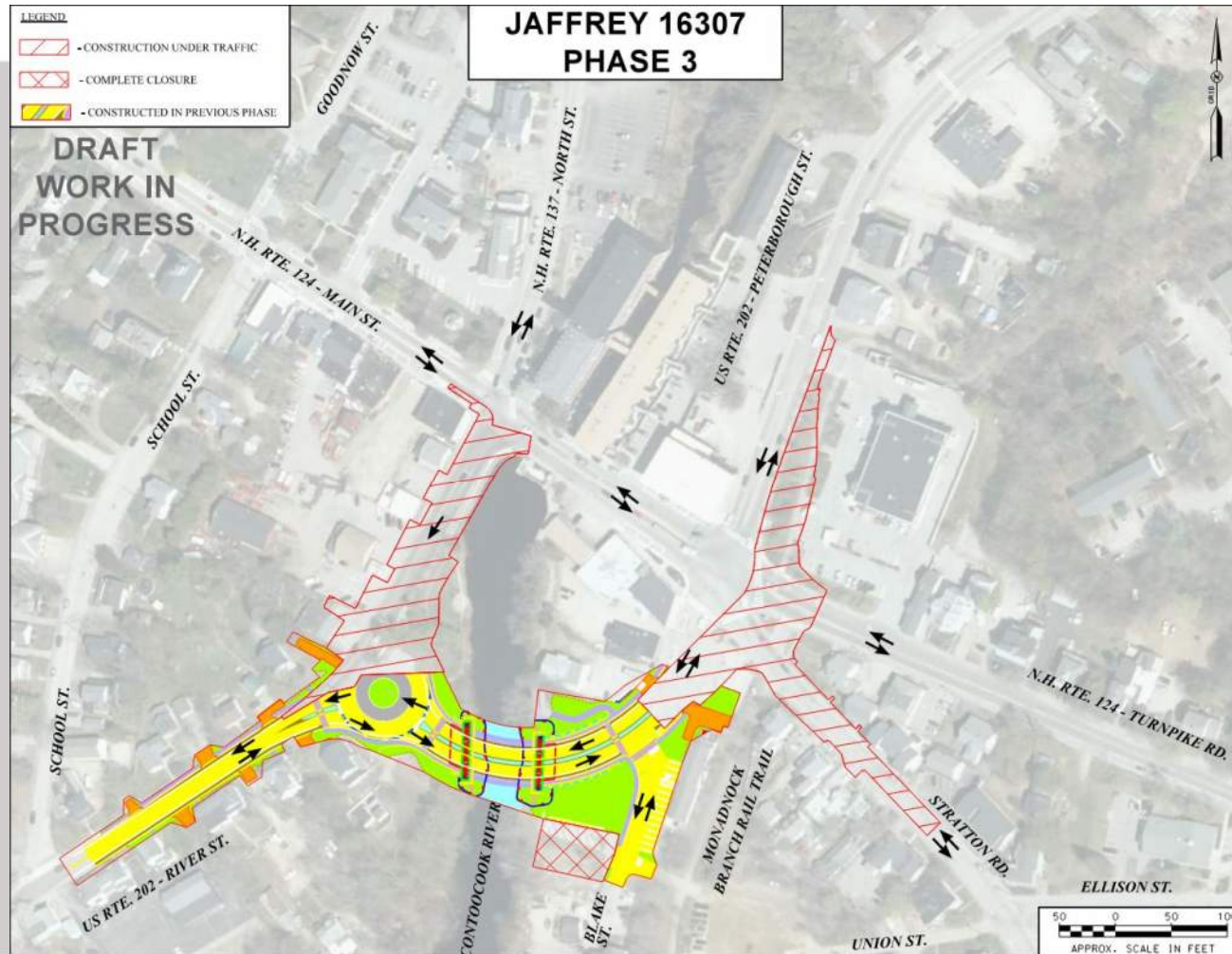
# Construction Schedule Phase 2

June 2025 thru  
November 2025,  
Complete US 202  
Bridge, River  
Street (US 202)  
South  
Improvements



# Construction Schedule Phase 3

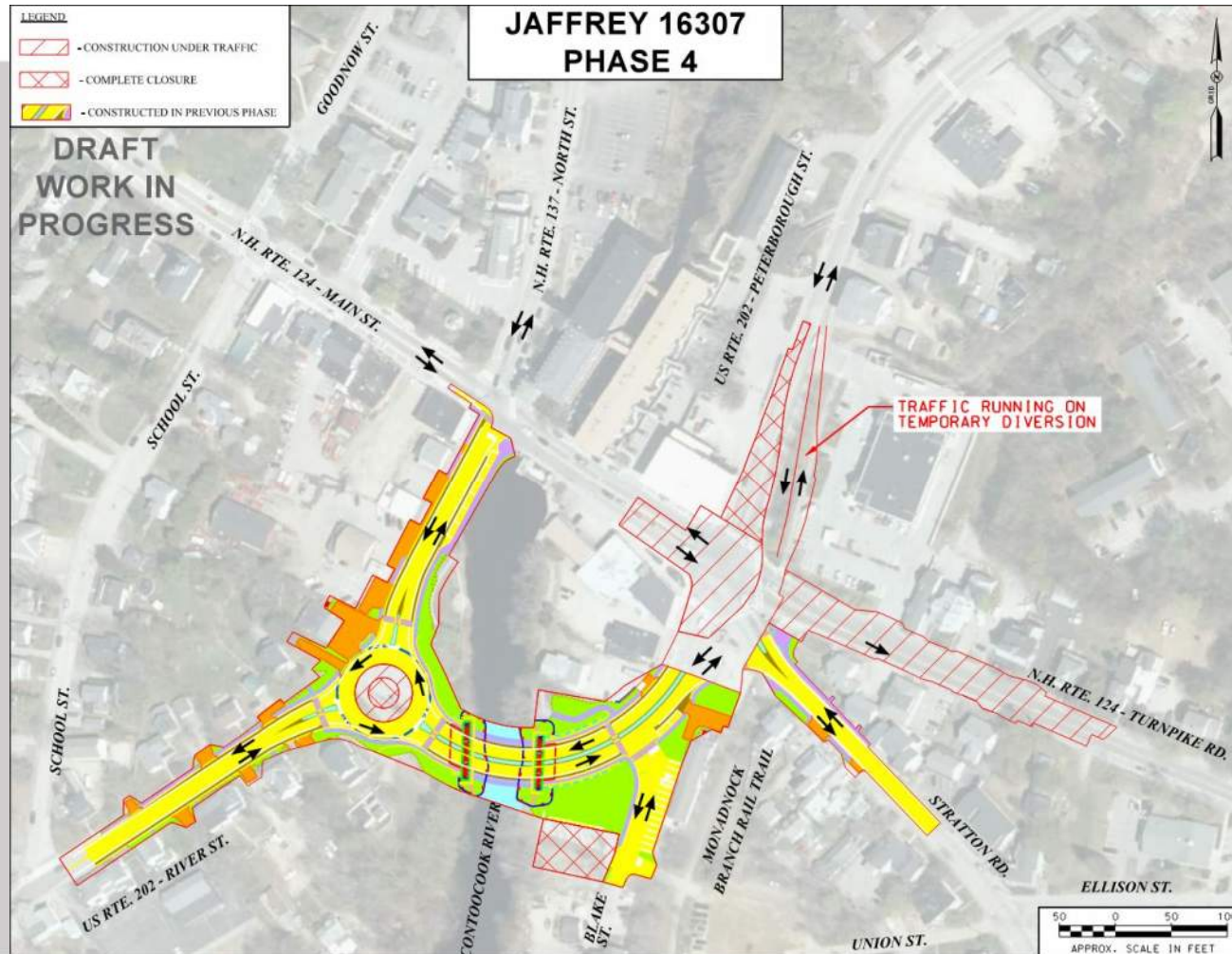
March 2026 thru  
August 2026,  
River Street North,  
Stratton Road, and  
Temporary Widen  
for North (5-  
Legged)  
Roundabout





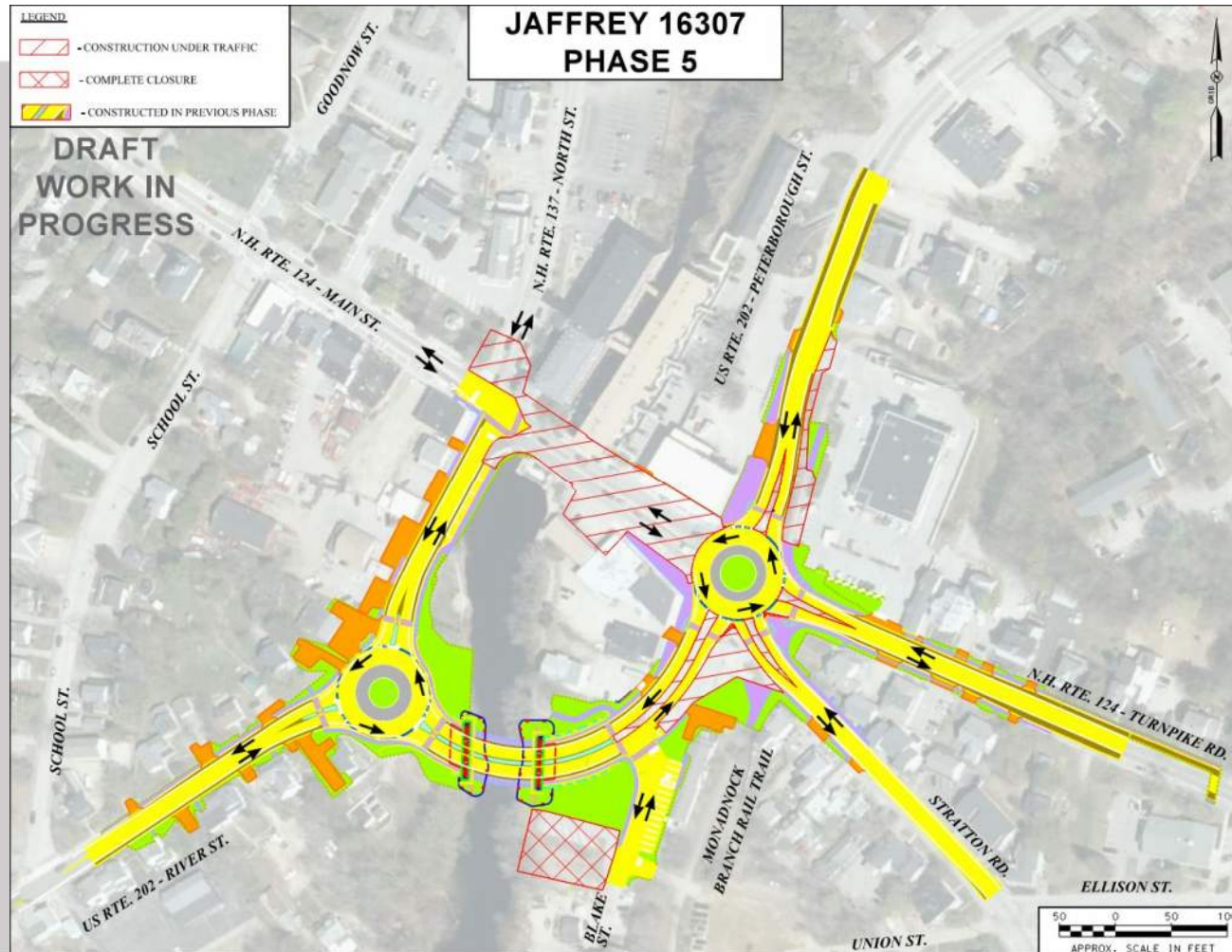
# Construction Schedule Phase 4

August 2026 thru  
June 2027,  
North 5-Legged  
Roundabout and  
Turnpike Road  
(NH 124)  
Improvements



# Construction Schedule Phase 5

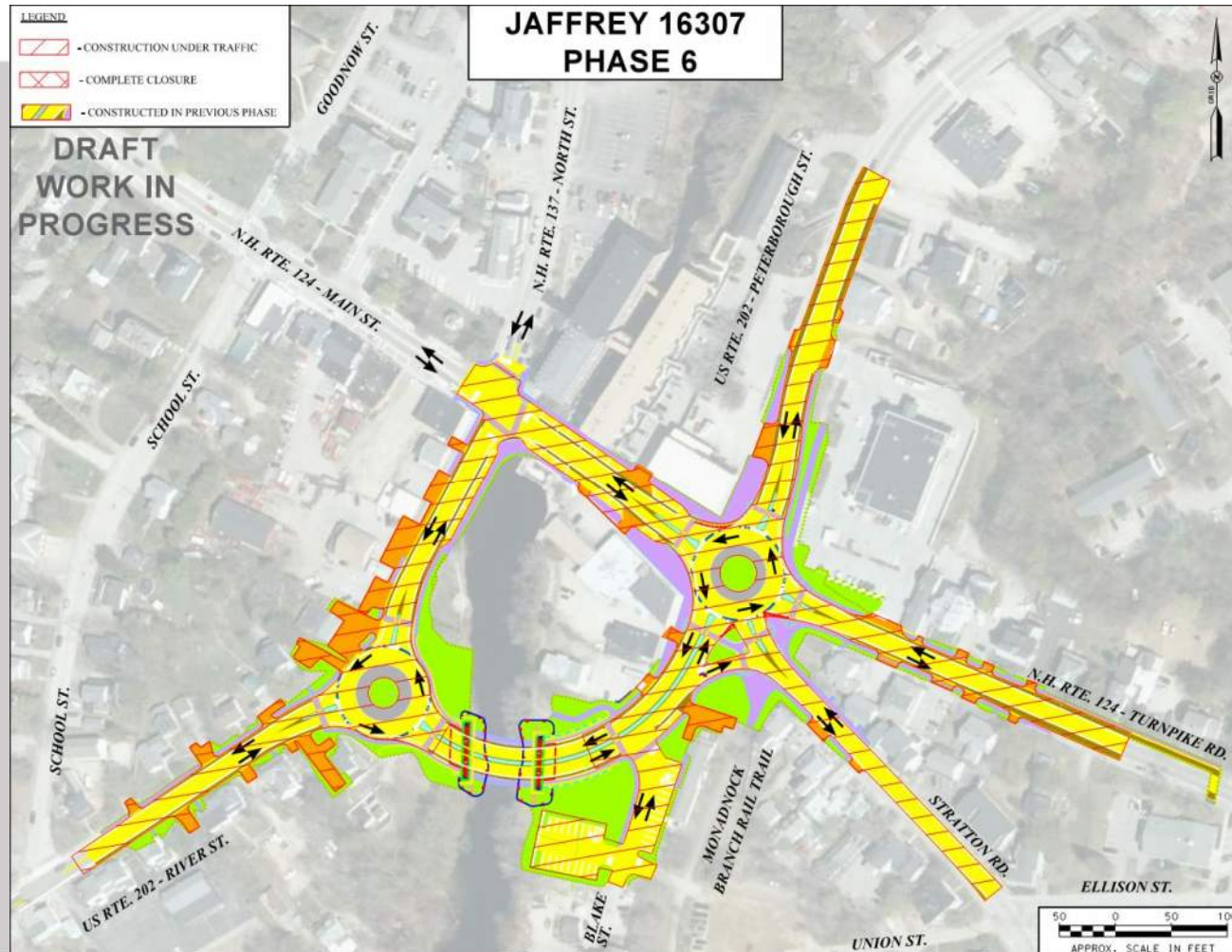
June 2027 thru  
November 2027,  
Main Street  
Improvements  
along with Main  
Street Bridge





# Construction Schedule Phase 6

March 2028 thru  
May 2028,  
Pave entire  
project and  
complete  
roundabout  
islands



# Construction Schedule Summary

Construction Phase	Timeframe Start	End	Major Effort
1	April 2025	June 2025	Construct Blake Street Improvements Begin US 202 Bridge
2	June 2025	Nov 2025	Complete new US 202 Bridge Construct River Street South Improvements
3	March 2026	August 2026	Construct River Street North and Stratton Road Improvements
4	August 2026	June 2027	Construct North 5-Legged Roundabout Construct Turnpike Road Improvements
5	June 2027	Nov 2027	Construct Main Street Improvements
6	March 2028	May 2028	Complete Roundabout Islands, Final Landscaping, Pave and Stripe Project Limits



# Next Steps

Milestone	16307
Coordinate with Town and Utility Companies to Progress Plans to 80%	April 2024
Bridge Plans Review by Town and NHDHR	May 2024
Contract Plans	June 2024
Environmental Permits Received	June 2024
Advertise for Construction	July 2024
On-site Construction start	April 2025

# Communication During Construction

- Pre-Construction Meeting
- NHDOT will have a Contract Administrator (CA) On-site when Site Construction is active
- Bi-Weekly Meetings will be held with CA and Contractor in attendance. Town of Jaffrey staff will be invited and encouraged to attend these meetings.
- Message boards in place through entire contract
- Press Releases for major traffic control events
- DOT Project Manager stays assigned to the project to answer questions

# Questions and Comments

# North Roundabout (5-Legged)

