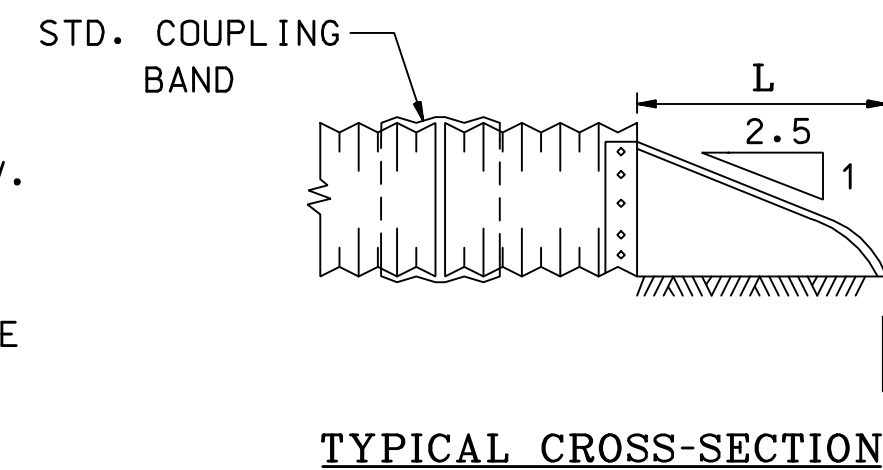
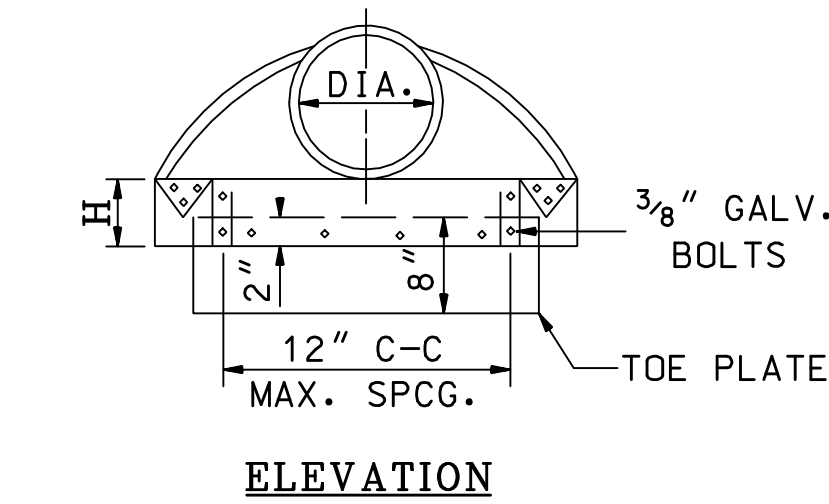
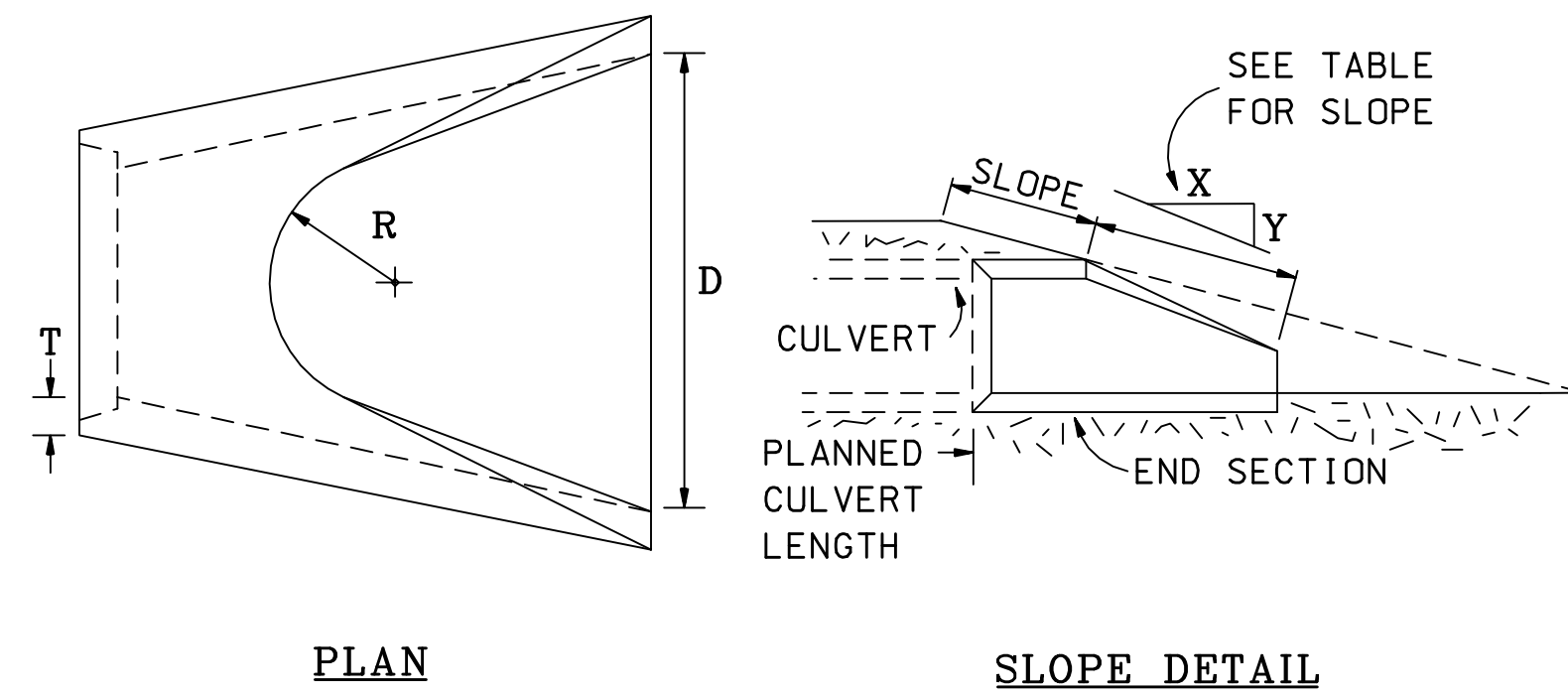


ITEM NO.	PIPE DIA.	METAL GAGE	DIMENSIONS				
			A (1" TOL.)	B (1" TOL.)	H (1" TOL.)	L (1 1/2" TOL.)	W (2" TOL.)
603.34112	12"	16	6"	6"	6"	21"	24"
603.34115	15"	16	7"	8"	6"	26"	30"
603.34118	18"	16	8"	13"	6"	31"	36"
603.34124	24"	16	10"	16"	6"	41"	48"
603.34130	30"	14	12"	16"	8"	51"	60"
603.34136	36"	14	14"	19"	9"	60"	72"
603.34142	42"	12	16"	22"	11"	69"	84"
603.34148	48"	12	18"	27"	12"	78"	90"



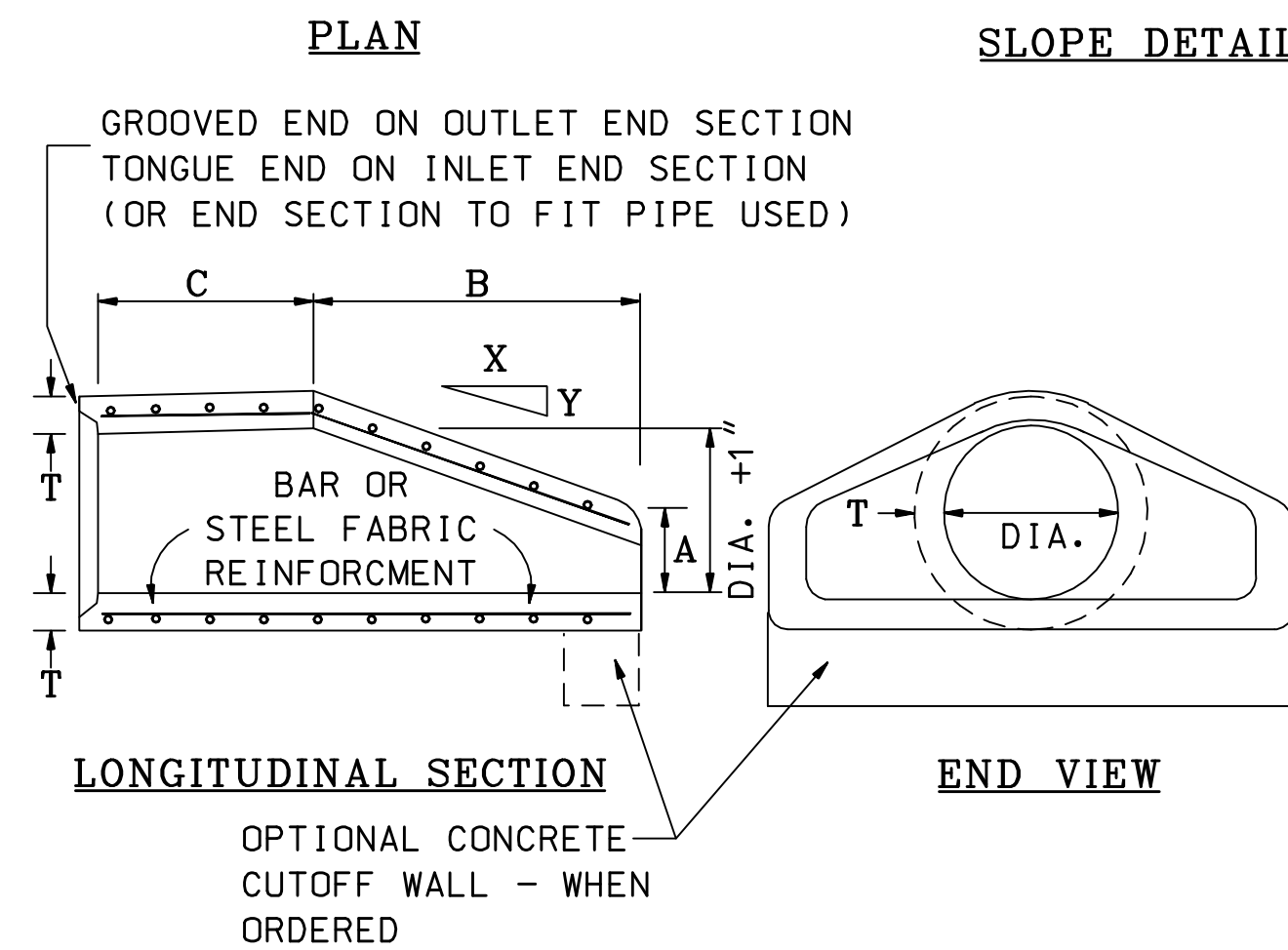
GENERAL NOTES

1. END SECTION FOR 12" TO 30" DIA. PIPE IN ONE PIECE, FOR 36" TO 48" DIA. PIPE TO BE MADE FROM TWO SHEETS JOINED BY RIVETING OR BOLTING ON CENTER LINE.
2. CONNECTOR SECTION, CORNER PLATE AND TOE PLATE TO BE SAME THICKNESS AS END SECTION AND EACH TO BE GALVANIZED.



GENERAL NOTES

1. DESIGN OF END SECTION SHALL CONFORM TO STANDARD REINFORCED CONCRETE PIPE.
2. CUT OFF WALL TO BE POURED IN FIELD, IF NECESSARY, AS DIRECTED BY THE ENGINEER.
3. PAYMENT FOR THE CUT OFF WALL WILL BE MADE UNDER THE APPROPRIATE CONTRACT ITEMS.



ITEM NO.	PIPE DIA.	APPROX. SLOPE X to Y	A	B	C	D	R	T
603.30112	12"	3 TO 1	4"	24"	48 7/8"	24"	9"	2"
603.30115	15"	3 TO 1	6"	27"	46"	30"	11"	2 1/4"
603.30118	18"	3 TO 1	9"	27"	46"	36"	12"	2 1/2"
603.30124	24"	3 TO 1	9 1/2"	43 1/2"	30"	48"	14"	3"
603.30130	30"	3 TO 1	12"	54"	19 3/4"	60"	15"	3 1/2"
603.30136	36"	3 TO 1	15"	63"	33"	72"	20"	4"
603.30142	42"	3 TO 1	21"	63"	33"	78"	22"	4 1/2"
603.30148	48"	3 TO 1	24"	72"	24"	84"	22"	5"

NHDOT STANDARD PLANS

END SECTION FOR PLASTIC & CORRUGATED STEEL PIPE

REV. DATE	PLATE
06-16-2010	1
	STANDARD
	ES-1

NHDOT STANDARD PLANS

CONCRETE END SECTION FOR REINFORCED CONCRETE PIPE

REV. DATE	PLATE
06-16-2010	2
	STANDARD
	ES-1

NHDOT STANDARD PLANS

REV. DATE	PLATE
	3
	STANDARD
	ES-1

NHDOT STANDARD PLANS

REV. DATE	PLATE
	4
	STANDARD
	ES-1

STANDARD NO. ES-1

REVISION DATE
07-13-2001
06-16-2010

*DGN FILE NAME
ES-1

STANDARD PLANS



STANDARD NO. ES-1