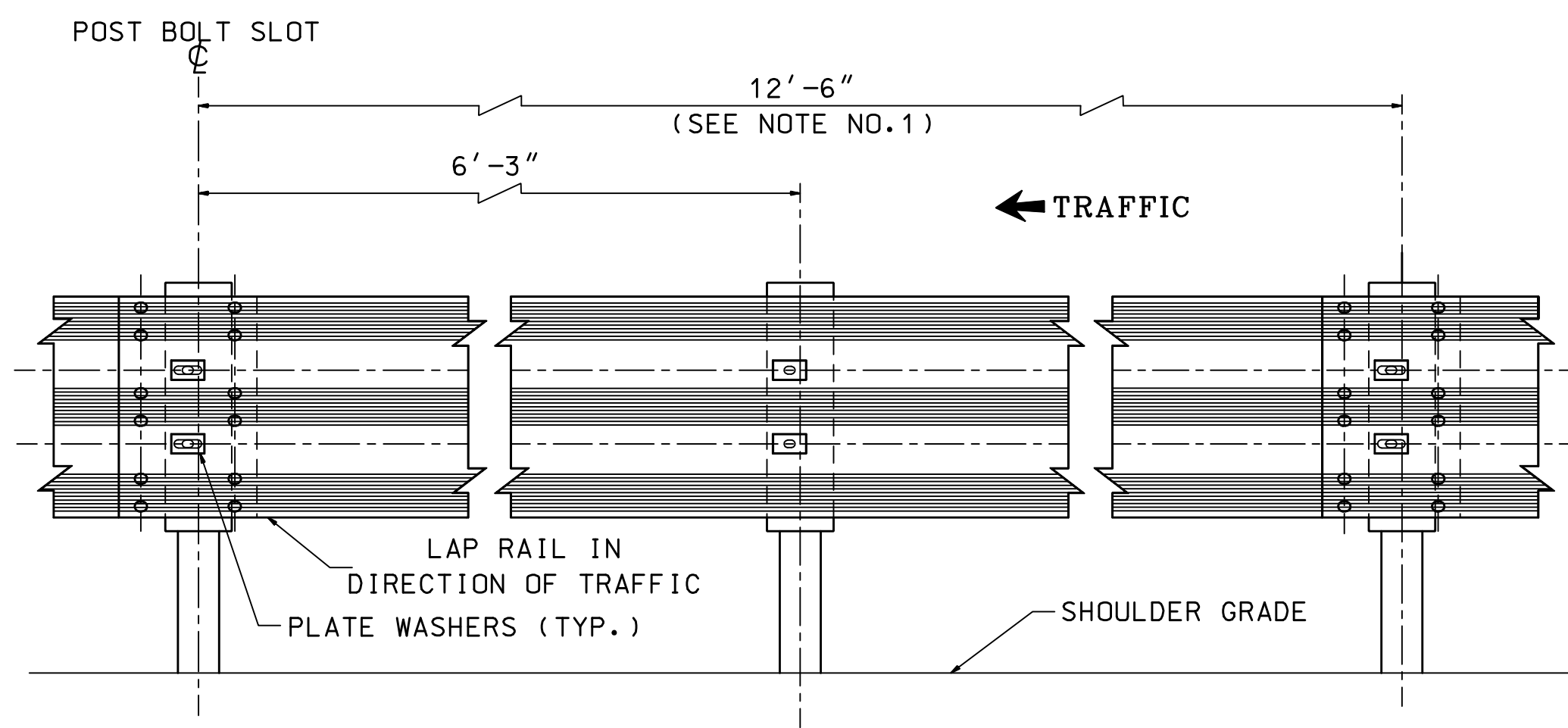
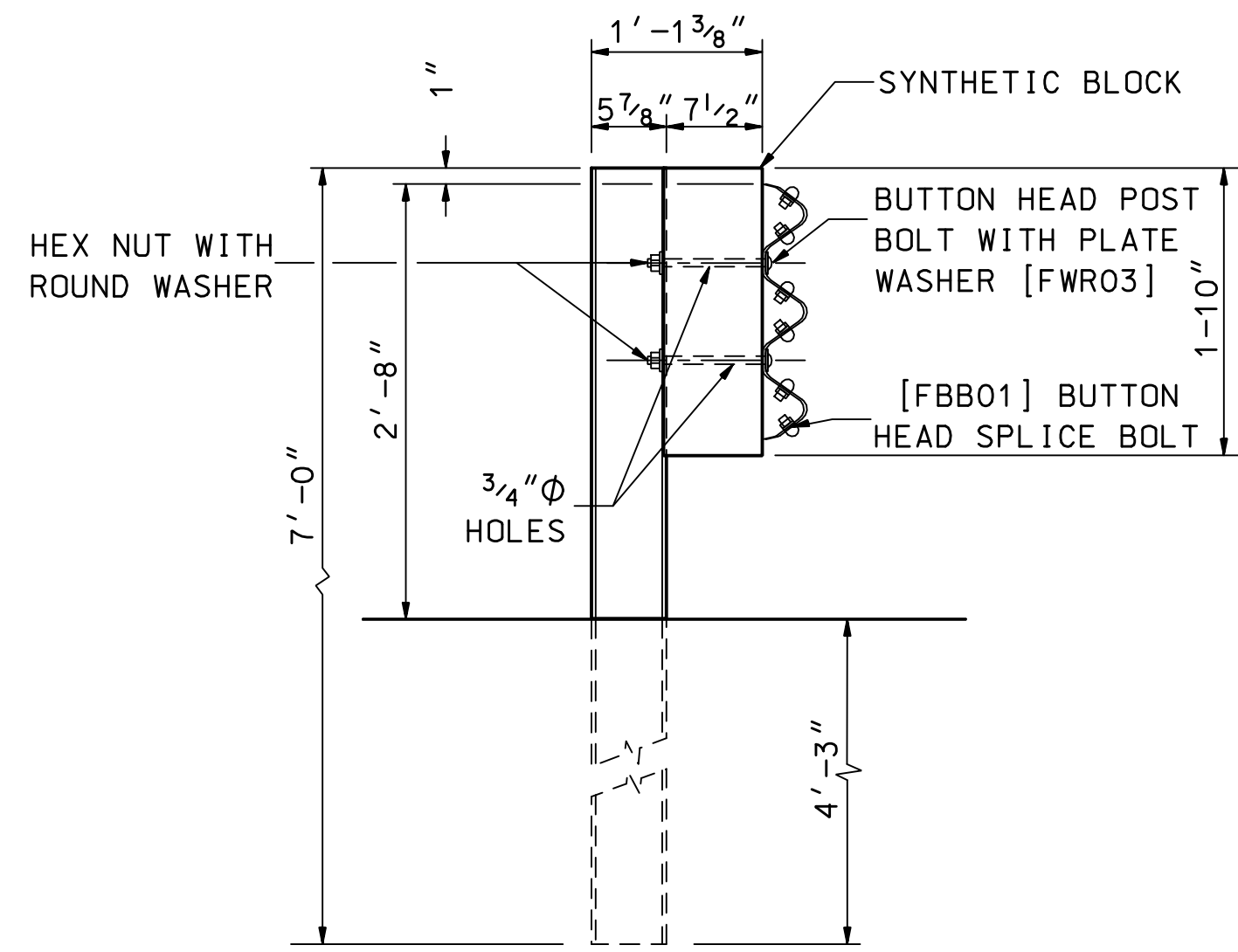


REVISION DATE
06-16-2010
11-05-2010
05-03-2011

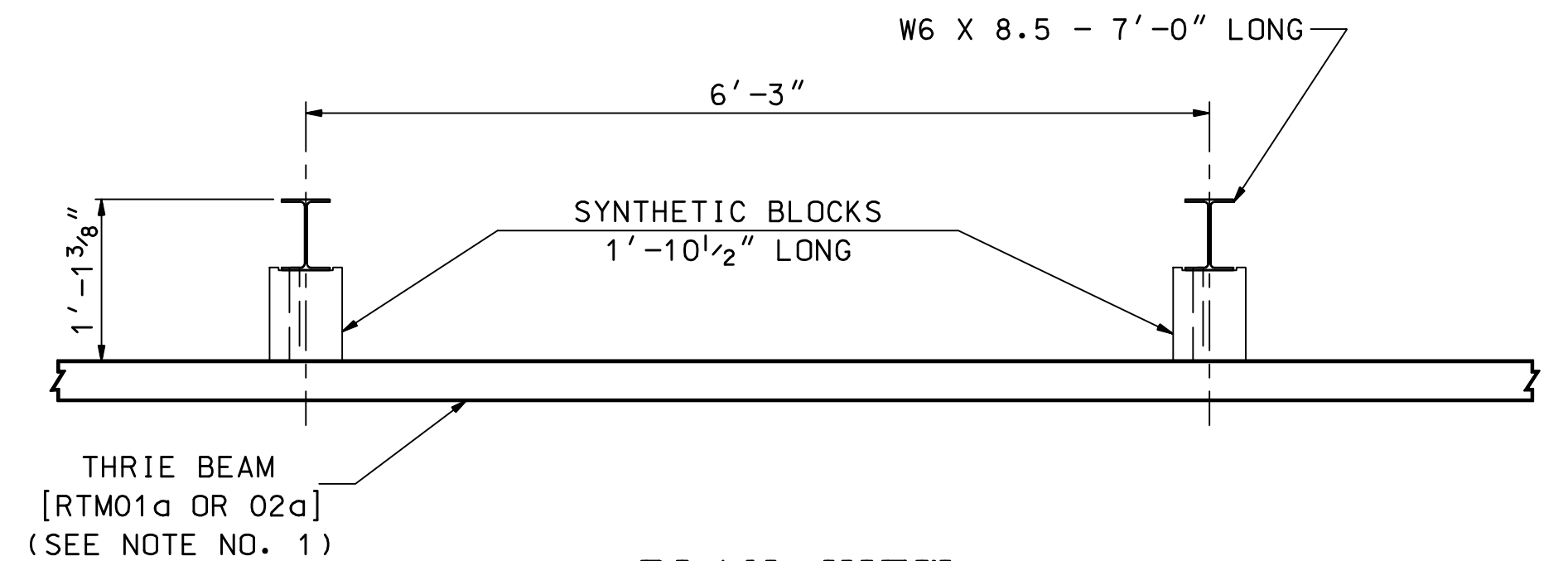
*DGN FILE NAME
GR-14



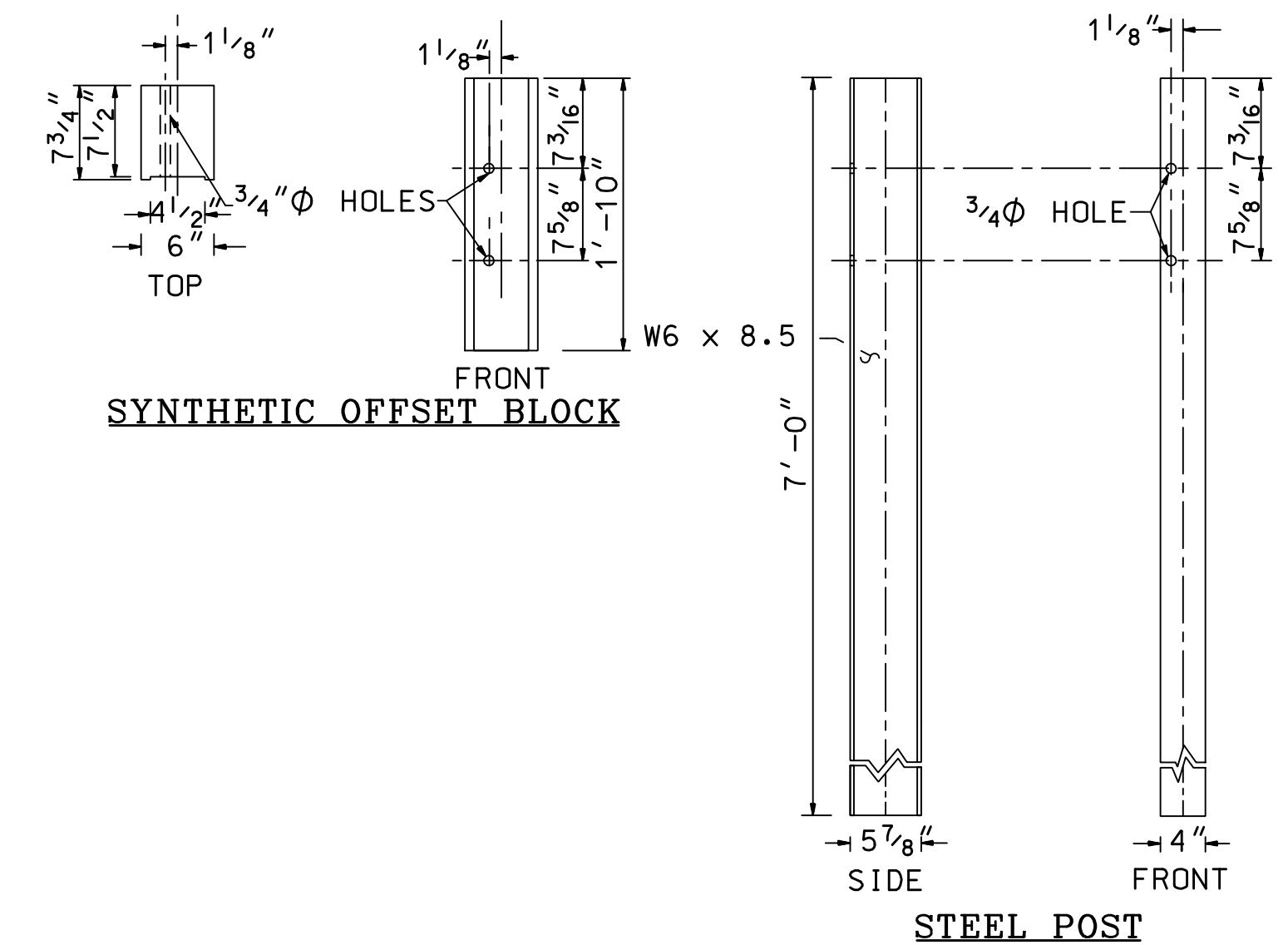
ELEVATION VIEW



SIDE VIEW AT SPLICE POST



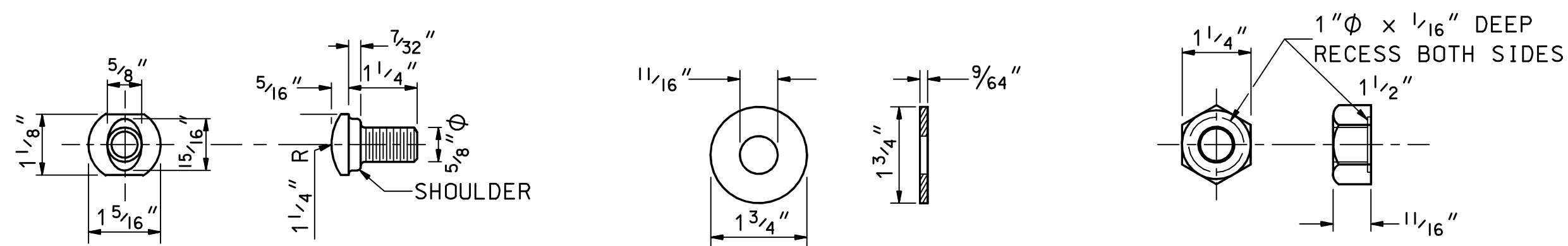
PLAN VIEW



SYNTHETIC OFFSET BLOCK

STEEL POST

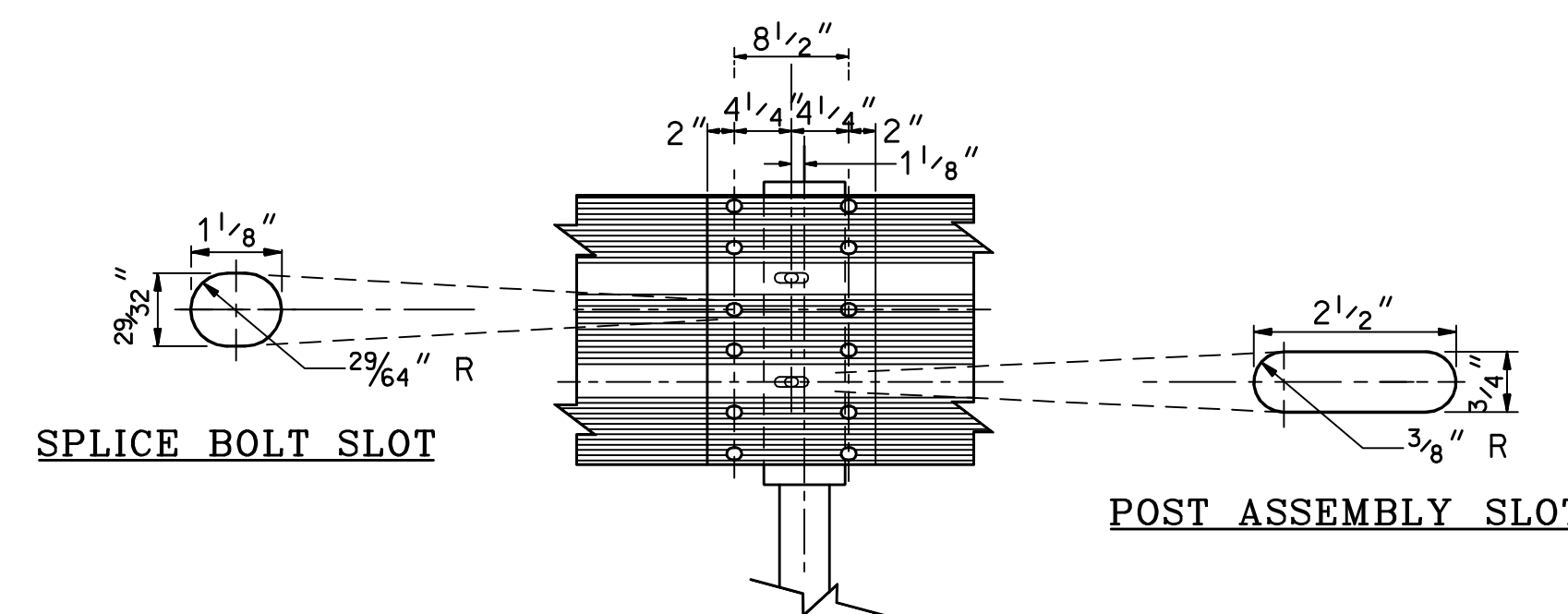
STRUCTURAL SHAPE STEEL POST & BLOCK



SPLICE BOLT [FBB01]
(12 REQ'D PER SPLICE)

ROUND WASHER [FWR03]

NUT FOR SPLICE & POST BOLTS [FBB01]



SPLICE BOLT SLOT

POST ASSEMBLY SLOT

BEAM SPLICE

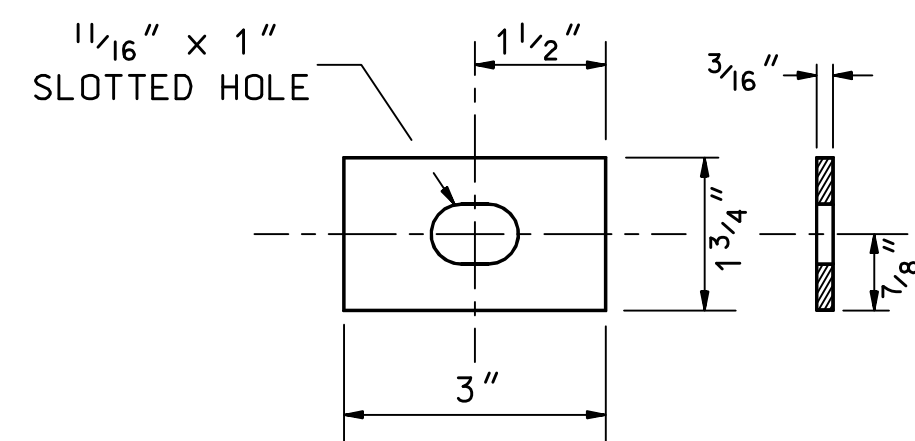
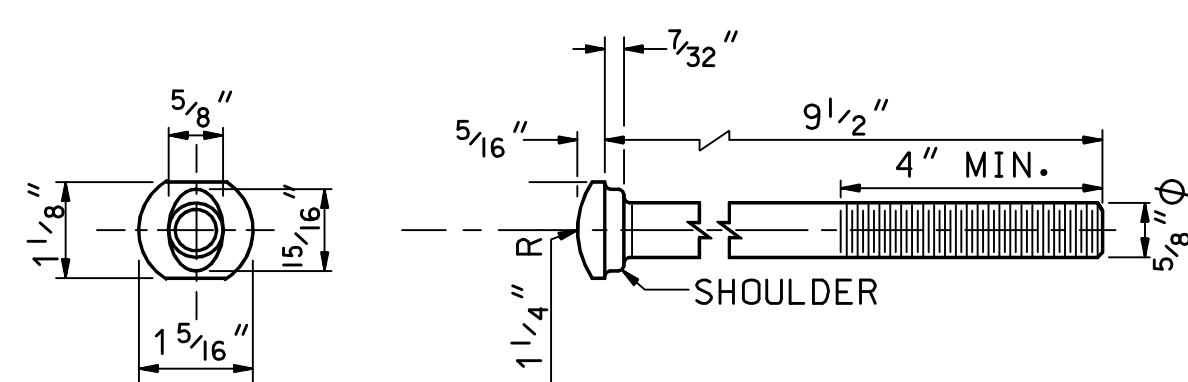
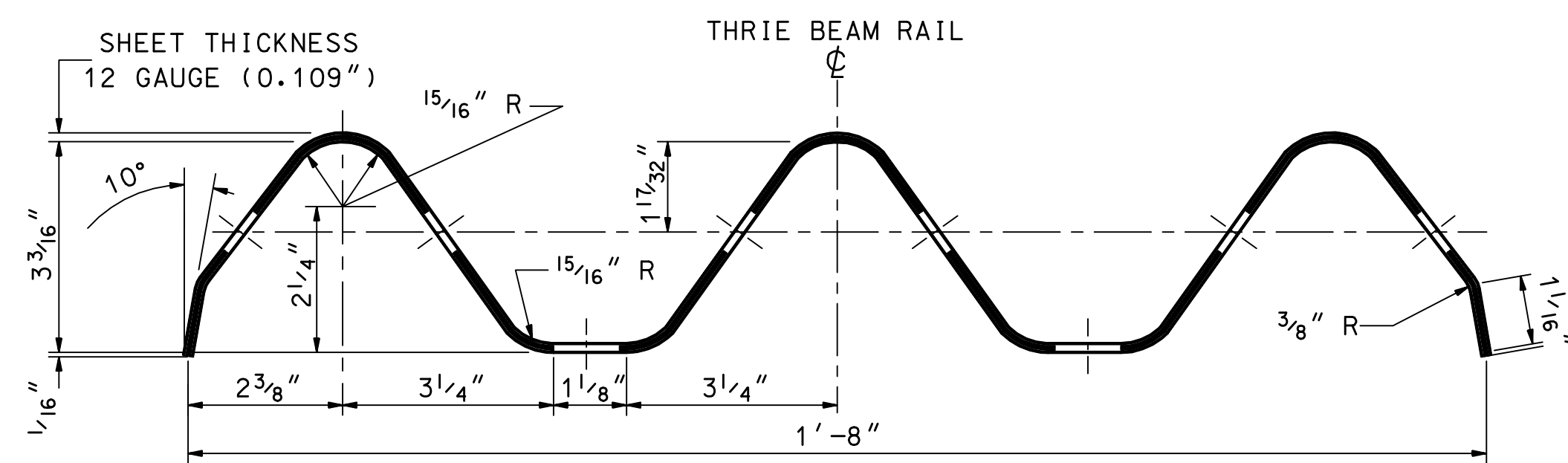


PLATE WASHER [FWR03]

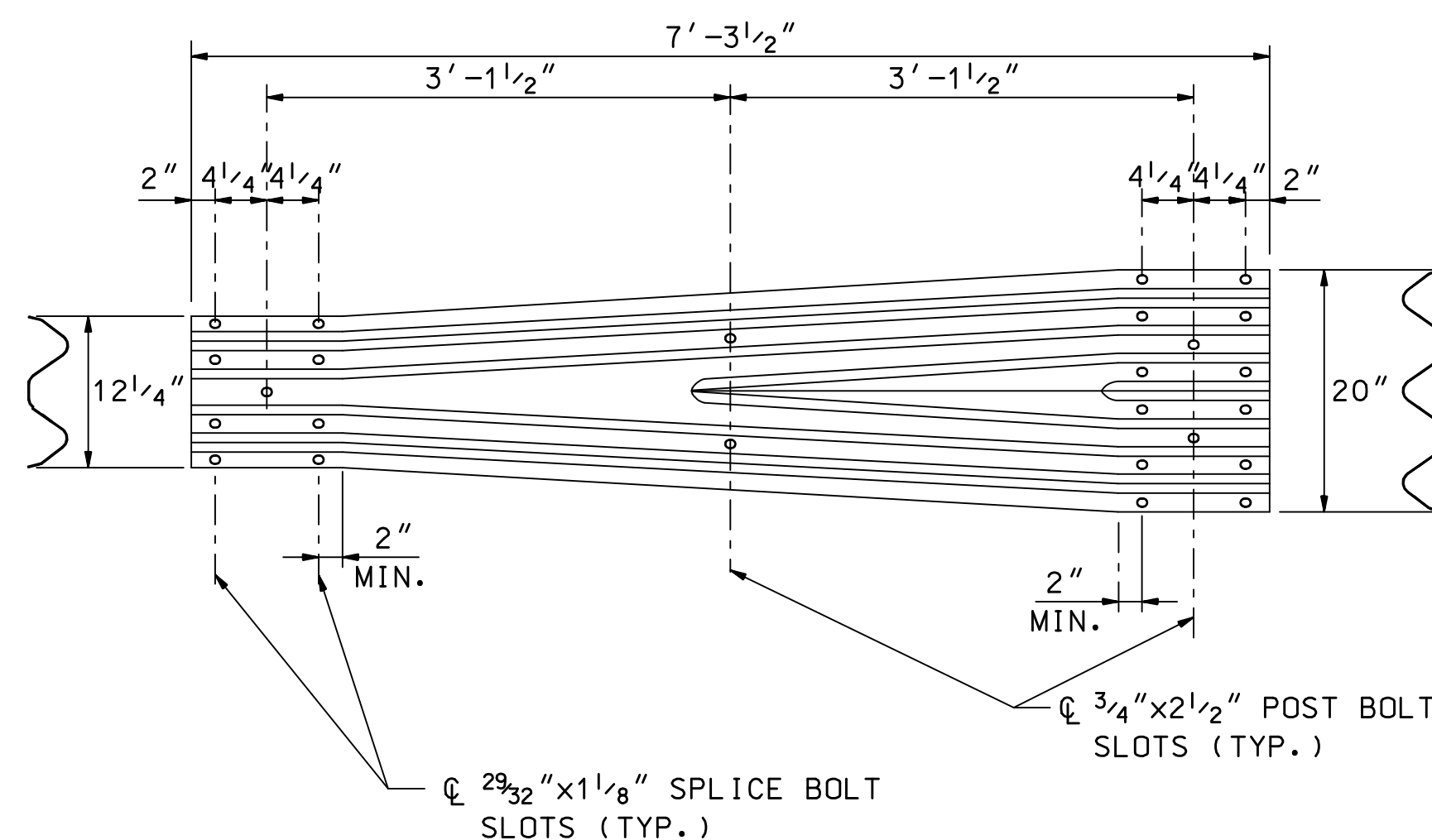


POST BOLT

NOTE: LONGER ERECTION BOLTS MAY BE REQUIRED.



THRIE BEAM RAIL SECTION
[RTM01a & RTM02a]



W-THRIE BEAM TRANSITION SECTION
[RWT01a]

GENERAL NOTES

- 25'-0" RAIL PANELS MAY BE USED IN PLACE OF 12'-6" PANELS, EXCEPT ON CURVES WITH A RAIL RADIUS OF LESS THAN 300 FT.
- GUARDRAIL HEIGHT SHALL BE SET FROM THE GRADE AT THE FACE OF RAIL.
- DESIGNATIONS PROVIDED IN BRACKETS [] REFERENCE STANDARD ELEMENTS DETAILED IN A *GUIDE TO STANDARDIZED HIGHWAY BARRIER HARDWARE*, LATEST ADOPTED VERSION, AASHTO-AGC-ARTBA JOINT COOPERATIVE COMMITTEE.
- SEE STD. NO. DL-1 FOR BEAM GUARDRAIL DELINEATORS.
- PAID FOR UNDER APPROPRIATE 606 ITEMS, OR AS SHOWN ON PLANS.
- DIMENSIONS OF PLASTIC AND SYNTHETIC BLOCKOUTS ARE AS SHOWN ON MANUFACTURER'S DRAWINGS.
- POSTS SHORTER THAN THE 7'-0" INDICATED ON THE DETAIL, BUT NOT LESS THAN 6'-6", MAY ONLY BE USED WHEN
 - THE SLOPE BEHIND THE GUARDRAIL IS NO STEEPER THAN 4:1
 - WHERE THE DISTANCE FROM THE BACK OF THE POST TO THE BREAK OF THE SLOPE IS A MINIMUM OF 2'-0"
 - AND THEN ONLY AS APPROVED OR SPECIFICALLY SHOWN ON THE PLANS.

GUARDRAIL STANDARD
BEAM GUARDRAIL THRIE
BEAM SINGLE-FACED (STEEL)