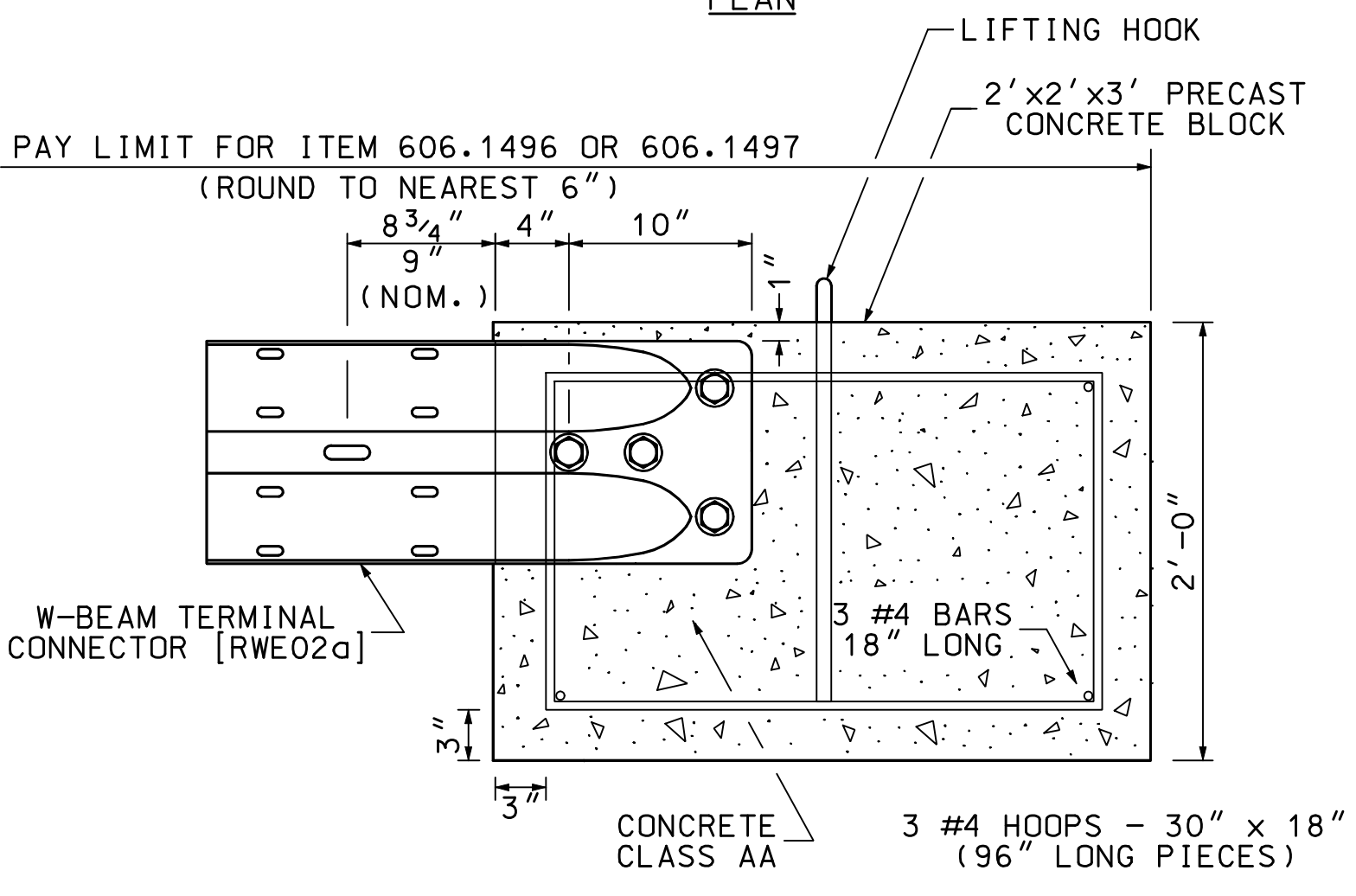
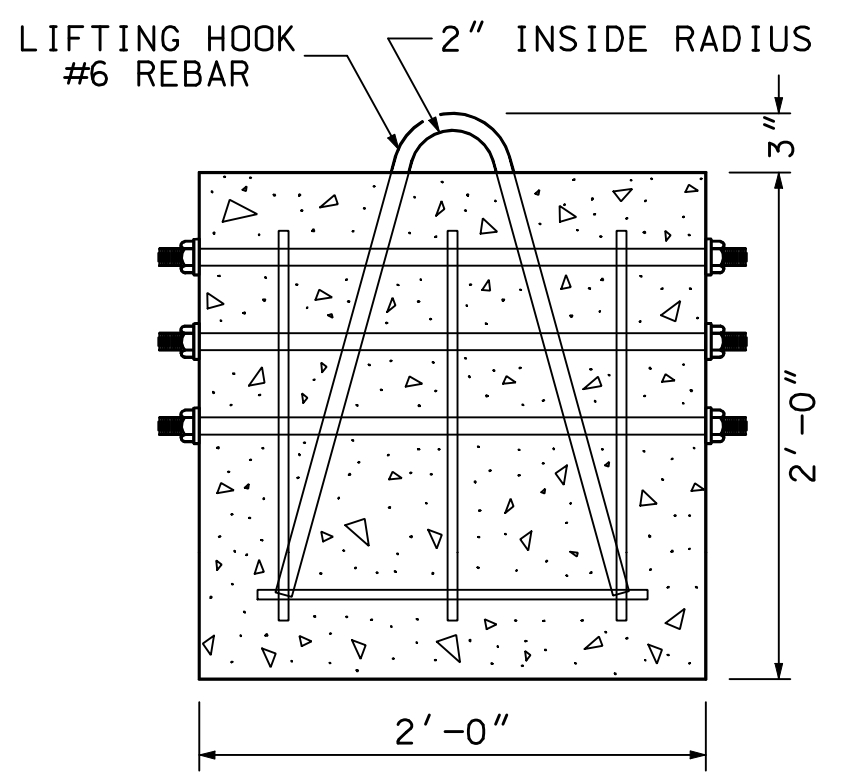


PLAN

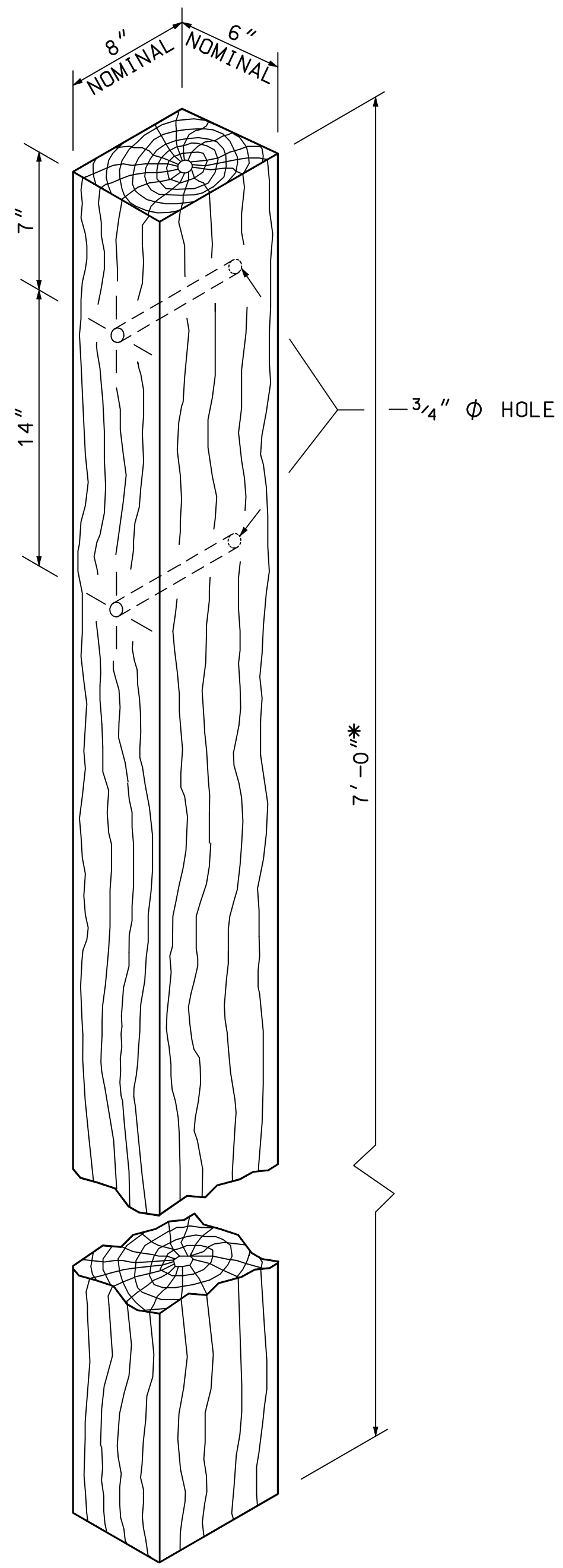


ELEVATION



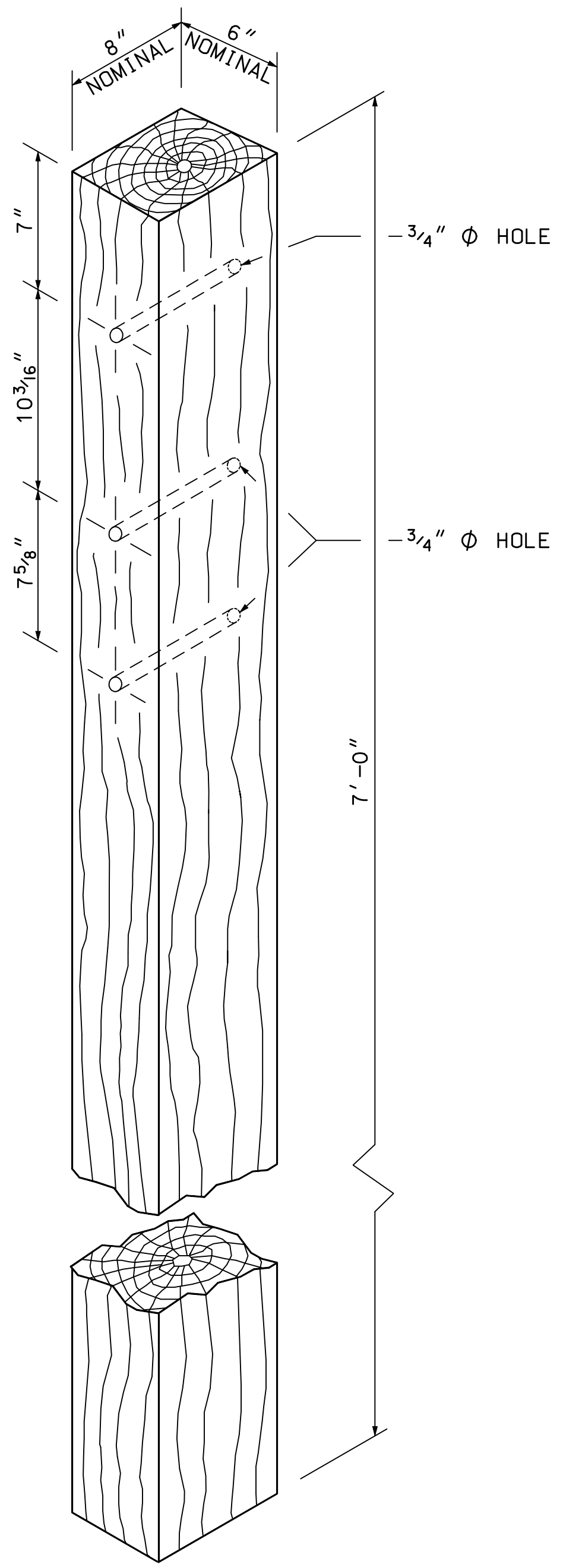
END VIEW

PRECAST CONCRETE BLOCK ANCHOR



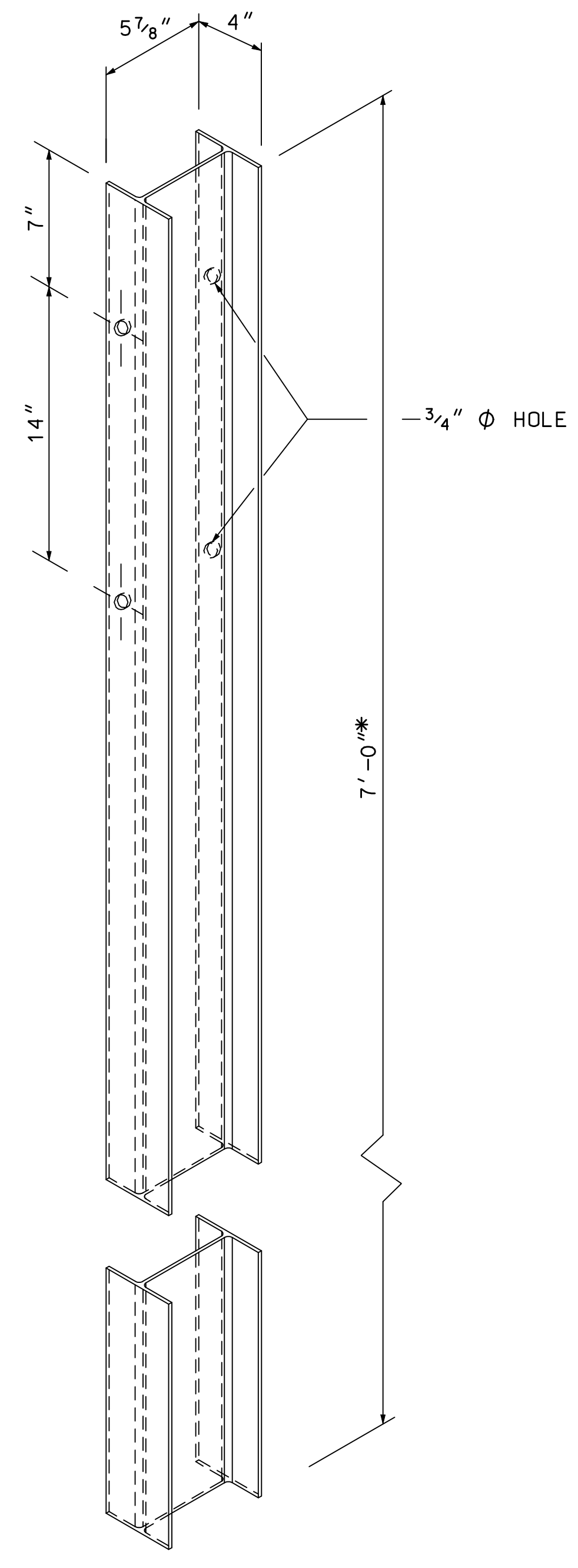
RUB RAIL LINE POST

[PDE04] MODIFIED  
\* 6'-0" POSTS MAY BE USED IN CUT SLOPES IN 8:1 TAPER AREA



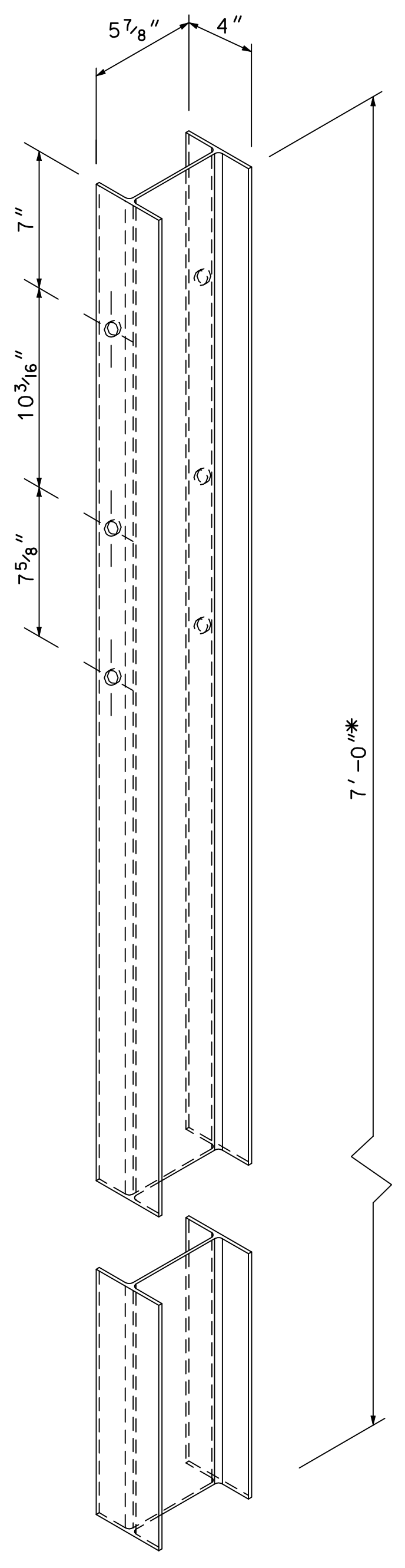
SPECIAL POST FOR DOWNSTREAM END OF RUB RAIL

[PDE04] MODIFIED (1 REQ'D)



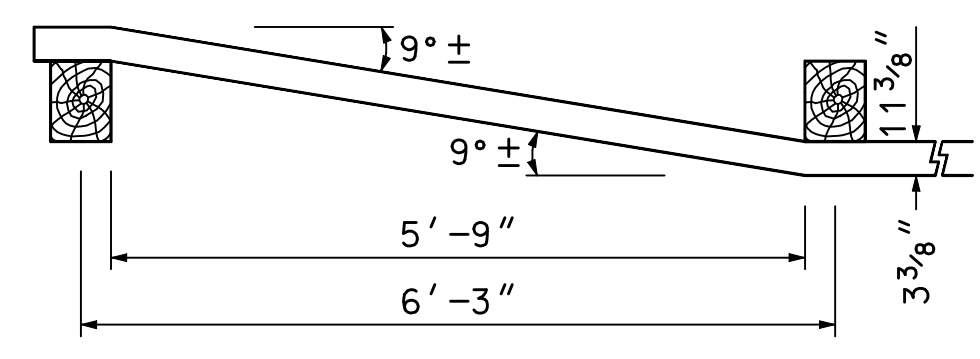
RUB RAIL LINE POST

[PWE02] MODIFIED  
\* 6'-0" POSTS MAY BE USED IN CUT SLOPES IN 8:1 TAPER AREA



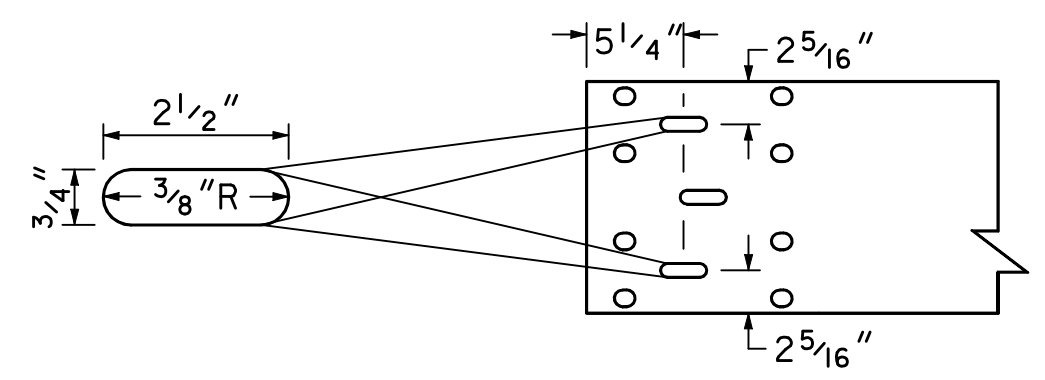
SPECIAL POST FOR DOWNSTREAM END OF RUB RAIL

[PWE02] MODIFIED (1 REQ'D)



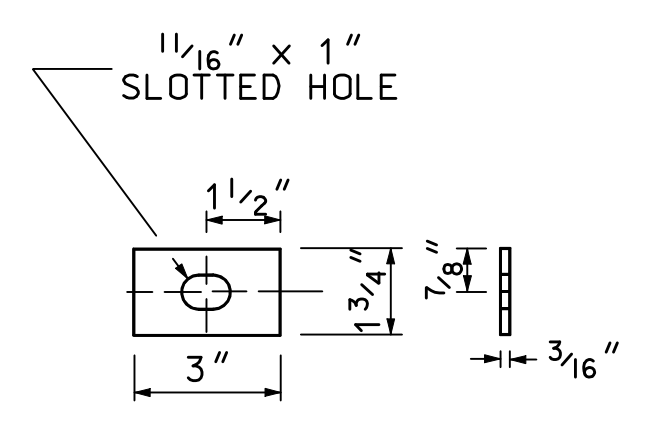
SHOP-BENDING DETAILS

MODIFICATIONS TO DOWNSTREAM END OF RUB RAIL



SPECIAL POST BOLT SLOTS

NOTE: USE FW16A WASHER UNDER BOLT HEAD AND NUT



RECTANGULAR PLATE WASHER

[FWR03] (4 REQ'D)

- GENERAL NOTES
- ALL DIMENSIONS SUBJECT TO MANUFACTURER'S TOLERANCES.
  - DESIGNATIONS PROVIDED IN BRACKETS [ ] RELATE TO STANDARD ELEMENTS IN "A GUIDE TO STANDARD HIGHWAY BARRIER RAIL HARDWARE", LATEST ADOPTED VERSION, AASHTO-AGC-ARTBA JOINT COOPERATIVE COMMITTEE.

**GUARDRAIL STANDARD**  
BEAM GUARDRAIL TERMINAL SECTION TYPE E-2 AND E-2MOD  
HARDWARE DETAILS

<b>STANDARD NO. GR-6</b>
REVISION DATE
03-01-2006
06-16-2010
DGN FILE NAME
GR-6

**STANDARD PLANS**



STANDARD NO. GR-6