

SECTION ON CENTERLINE

ELEVATION

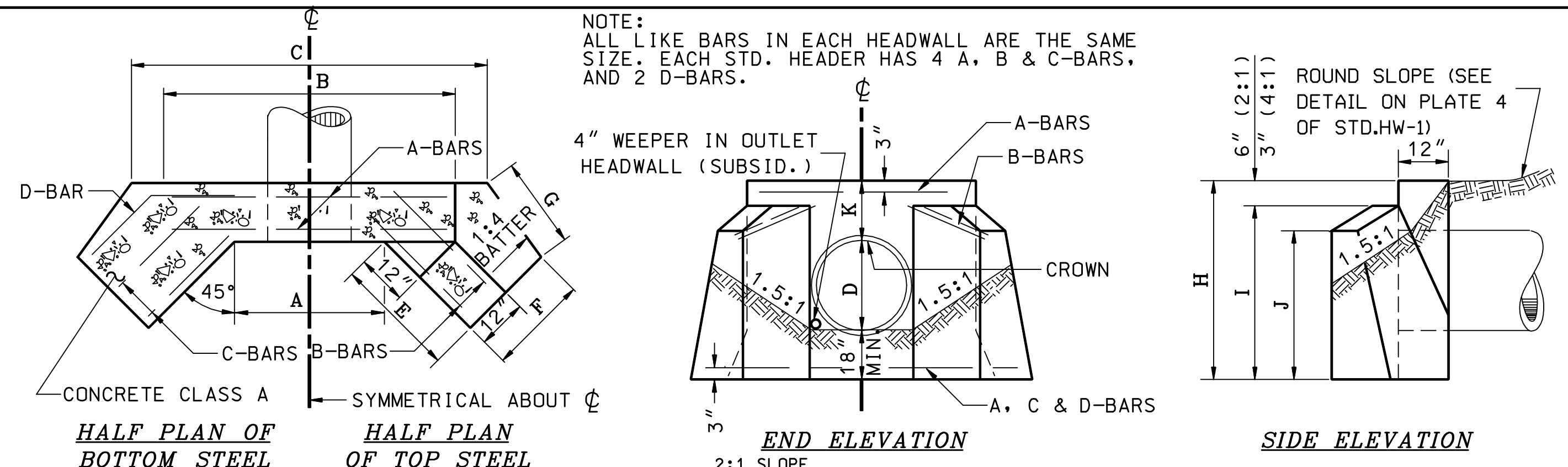
PLAN OF L HEADWALL

SECTIONS ON CENTERLINE FOR PC-4 SIMILAR TO PC-2.

DIAMETER D INCHES	MASONRY PER FOOT OF WALL CU. YD.	MASONRY PER STANDARD HEADER CU. YD.	STEEL PER STANDARD HEADER LB.	LENGTH OF BARS	EXC. FOR 1' DEPTH CU. YD.	HEADER LENGTH L	HEADER HEIGHT H	FILL HEIGHT FH	"h"	WIDTH AT BOTTOM OF HEADER W	"L" HEADWALL	
											MASONRY IN CORNER FRUSTUM CU. YD.	EXC. FOR 1' DEPTH CU. YD.
12	0.204	0.80	11	3'-10"	0.911	4'-3"	3'-9"	1'-1"	1'-3"	1'-11 1/4"	0.31	1.195
15	0.240	1.32	16	5-8	1.204	6-0	4-3	1-7	1-6	2-0 3/4"	0.38	1.588
18	0.260	1.66	16	5-8	1.375	7-0	4-6	1-10	1-6	2-1 1/2"	0.42	1.700
24	0.301	2.41	24	8-8	1.731	9-0	5-0	2-4	1-6	2-3	0.51	2.086
30	0.344	3.32	29	10-8	2.106	11-0	5-6	2-10	1-6	2-4 1/2"	0.61	2.491
36	0.389	4.43	35	12-8	2.500	13-0	6-0	3-4	1-6	2-6	0.72	2.917
42	0.461	6.28	42	15-2	3.082	15-9	6-9	4-1	1-9	2-8 1/4"	0.94	3.549
48	0.512	7.77	47	17-2	3.520	17-9	7-3	4-7	1-9	2-9 3/4"	1.05	4.019
54	0.565	9.46	52	19-2	3.977	19-9	7-9	5-1	1-9	2-11 1/4"	1.20	4.522
60	0.621	11.42	58	21-2	4.451	21-9	8-3	5-7	1-9	3-0 3/4"	1.37	5.024
66	0.689	13.68	63	23-2	4.947	23-9	8-9	6-1	1-9	3-2 1/4"	1.55	5.559
72	0.740	15.79	69	25'-2"	5.460	25'-9"	9'-3"	6'-7"	1'-9"	3'-3 3/4"	1.75	6.108

NOTE: STEEL QUANTITIES ARE FOR CONCRETE HEADWALLS ONLY

NHDOT STANDARD PLANS			REV. DATE	PLATE
HEADWALLS FOR R.C. PIPE:	CONCRETE	P.C.-3	06-16-2010	1
	MORTAR RUBBLE MASONRY	P.C.-4		STANDARD HW-2



HALF PLAN OF BOTTOM STEEL

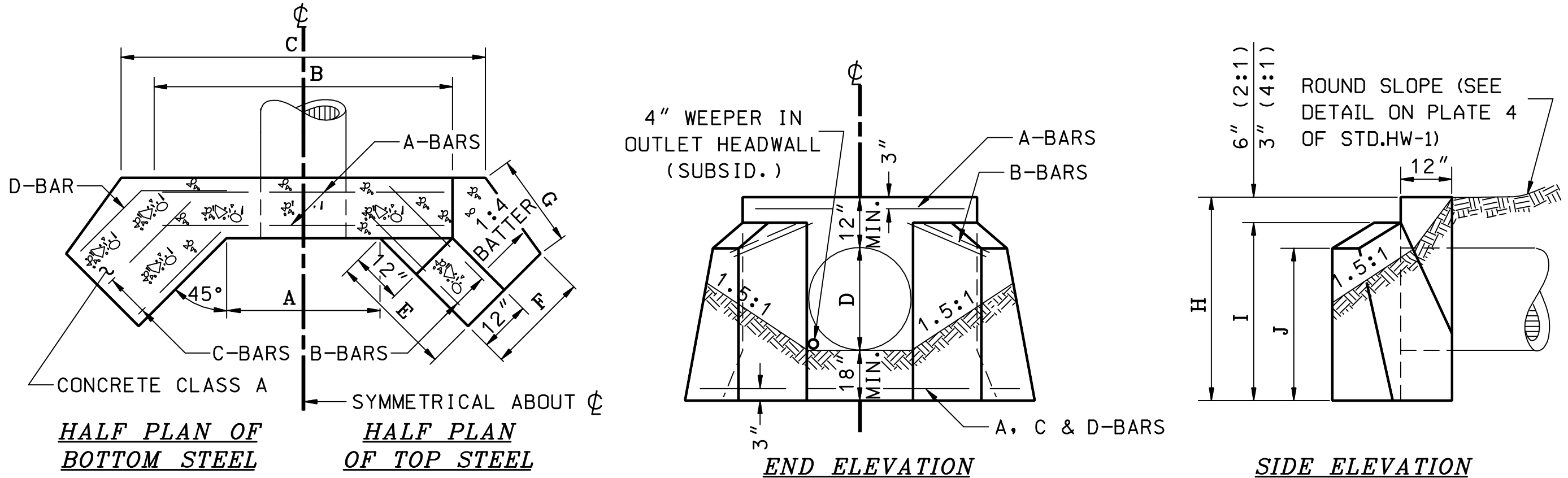
HALF PLAN OF TOP STEEL

END ELEVATION

SIDE ELEVATION

DIAMETER D INCHES	QUANTITIES PER HEADER			DIMENSIONS											REINFORCING STEEL					
	CONC. CU. YD.	STEEL LB.	EXC. FOR 1' DEPTH CU. YD.	A	B	C	E	F	G	H	I	J	K	SIZE	A BARS	B BARS	C BARS	D BARS	D-BARS, a b	
24	1.97	36	1.58	2'-6"	5'-4"	6'-7"	3'-0"	1'-11"	2'-3"	5'-0"	4'-6"	3'-10"	1'-6"	#4	5'-0"	3'-2"	3'-0"	4'-8"	2'-5"	2'-3"
30	2.57	42	1.80	3-1	5-11	7-6	3-7	2-0	2-9	5-6	5-0	4-1	1-6	#4	5-7	3-9	3-7	5-3	2-6	2-9
36	3.24	47	2.12	3-8	6-6	8-5	4-2	2-1	3-3	6-0	5-6	4-4	1-6	#4	6-2	4-3	4-1	5-10	2-8	3-2
42	4.46	125	2.55	4-3	7-1	9-6	5-1	2-2	4-0	6-9	6-3	4-10	1-9	#6	6-9	5-3	4-11	7-10	3-10	4-0
48	5.38	139	2.88	4-10	7-8	10-5	5-9	2-3	4-6	7-3	6-9	5-1	1-9	#6	7-4	5-11	5-7	8-5	3-10	4-7
54	6.46	151	3.15	5-5	8-3	11-3	6-4	2-4	5-0	7-9	7-3	5-4	1-9	#6	7-11	6-7	6-1	9-2	4-1	5-1
60	7.55	162	3.51	6-0	8-10	12-2	6-11	2-5	5-6	8-3	7-9	5-8	1-9	#6	8-6	7-1	6-8	9-9	4-1	5-8
66	8.80	176	3.80	6-7	9-5	13-2	7-6	2-6	6-0	8-9	8-3	5-11	1-9	#6	9-1	7-8	7-3	10-5	4-2	6-3
72	10.29	188	4.12	7'-2"	10'-0"	14'-0"	8'-2"	2'-7"	6'-6"	9'-3"	8'-9"	6'-3"	1'-9"	#6	9'-8"	8'-3"	7'-10"	11'-0"	4'-3"	6'-9"

NHDOT STANDARD PLANS			REV. DATE	PLATE
CONCRETE HEADWALLS WITH 45° WINGS FOR R.C. PIPE	P.C.-7		06-16-2010	2
				STANDARD HW-2



HALF PLAN OF BOTTOM STEEL

HALF PLAN OF TOP STEEL

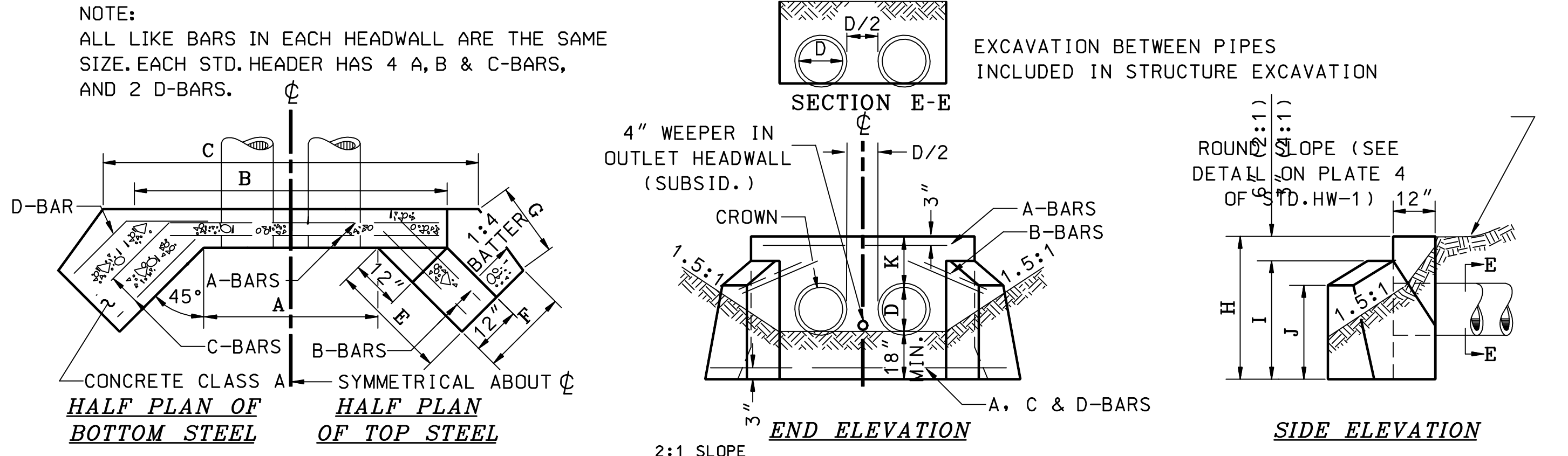
END ELEVATION

SIDE ELEVATION

NOTE: ALL LIKE BARS IN EACH HEADWALL ARE THE SAME SIZE. EACH STD. HEADER HAS 4 A, B & C-BARS, AND 2 D-BARS.

DIAMETER D INCHES	QUANTITIES PER HEADER			DIMENSIONS											REINFORCING STEEL					
	CONC. CU. YD.	STEEL LB.	EXC. FOR 1' DEPTH CU. YD.	A	B	C	E	F	G	H	I	J	SIZE	A BARS	B BARS	C BARS	D BARS	D-BARS, a b		
24	1.50	32	1.36	2'-3"	5'-1"	6'-0"	2'-5"	1'-11"	1'-9"	4'-6"	4'-0"	3'-6"	#4	4'-9"	2'-7"	2'-5"	3'-11"	2'-4"	1'-7"	
30	2.01	37	1.63	2-9	5-7	6-10	3-0	1-11	2-3	5-0	4-6	3-10	#4	5-3	3-3	3-1	4-7	2-7	2-0	
36	2.62	42	1.88	3-3	6-1	7-8	3-7	2-0	2-9	5-6	5-0	4-1	#4	5-9	3-10	3-6	5-2	2-8	2-6	
42	3.31	47	2.18	3-9	6-7	8-6	4-2	2-1	3-3	6-0	5-6	4-4	#4	6-3	4-5	4-1	5-10	2-10	3-0	
48	4.11	123	2.42	4-4	7-2	9-5	4-10	2-2	3-9	6-6	6-0	4-8	#6	6-10	5-1	4-8	7-8	4-0	3-8	
60	5.98	146	3.04	5-4	8-2	11-0	6-0	2-4	4-8	7-6	7-0	5-3	#6	7-10	6-3	5-8	8-11	4-6	4-5	
72	8.33	171	3.69	6'-5"	9'-3"	12'-9"	7'-3"	2'-5"	5'-8"	8'-6"	8'-0"	5'-10"	#6	8'-11"	7'-6"	6'-9"	10'-4"	4'-10"	5'-6"	

NHDOT STANDARD PLANS			REV. DATE	PLATE
CONCRETE HEADWALLS WITH 45° WINGS FOR PIPES OTHER THAN R.C.	P.C.-5		06-16-2010	3
				STANDARD HW-2



HALF PLAN OF BOTTOM STEEL

HALF PLAN OF TOP STEEL

END ELEVATION

SIDE ELEVATION

DIA. D INCHES	QUANTITIES PER HEADER			DIMENSIONS											REINFORCING STEEL						
	CONC. CU. YD.	STEEL LB.	EXC. FOR 1' DEPTH CU. YD.	A	B	C	E	F	G	H	I	J	K	D/2	SIZE	A BARS	B BARS	C BARS	D BARS	D-BARS, a b	
24	2.44	46	1.96	6'-0"	8'-10"	10'-0"	3'-0"	1'-11"	2'-3"	5'-0"	4'-6"	3'-10"	1'-6"	1'-0"	#4	8'-6"	3'-2"	3'-0"	4'-8"	2'-5"	2'-3"
30	3.18	53	2.28	7-5	10-3	11-9	3-7	2-0	2-9	5-6	5-0	4-1	1-6	1-3	#4	9-11	3-9	3-7	5-3	2-6	2-9
36	3.99	61	2.69	8-10	11-8	13-7	4-2	2-1	3-3	6-0	5-6	4-4	1-6	1-6	#4	11-4	4-3	4-1	5-10	2-8	3-2
42	5.43	161	3.22	10-3	13-1	15-6	5-1	2-2	4-0	6-9	6-3	4-10	1-9	1-9	#6	12-9	5-3	4-11	7-10	3-10	4-0
48	6.53	180	3.64	11-8	14-6	17-3	5-9	2-3	4-6	7-3	6-9	5-1	1-9	2-0	#6	14-2	5-11	5-7	8-5	3-10	4-7
54	7.76	197	4.00	13-1	15-11	19-1	6-4	2-4	5-0	7-9	7-3	5-4	1-9	2-3	#6	15-7	6-7	6-1	9-2	4-1	5-1
60	9.10	214	4.45	14-6	17-4	20-10	6-11	2-5	5-6	8-3	7-9	5-8	1-9	2-6	#6	17-0	7-1	6-8	9-9	4-1	5-8
66	10.56	232	4.84	15-11	18-9	22-5	7-6	2-6	6-0	8-9	8-3	5-11	1-9	2-9	#6	18-5	7-8	7-3	10-5	4-2	6-3
72	12.28	249	5.25	17'-4"	20'-2"	24'-2"	8'-2"	2'-7"	6'-6"	9'-3"	8'-9"	6'-3"	1'-9"	#6	19'-10"	8'-3"	7'-10"	11'-0"	4'-3"	6'-9"	

NHDOT STANDARD PLANS			REV. DATE	PLATE
CONCRETE HEADWALLS WITH 45° WINGS FOR TWIN R.C. PIPE	P.C.-9		06-16-2010	4
				STANDARD HW-2

STANDARD NO. HW-2
REVISION DATE
07-13-2001
06-16-2010
DGN FILE NAME
HW-2