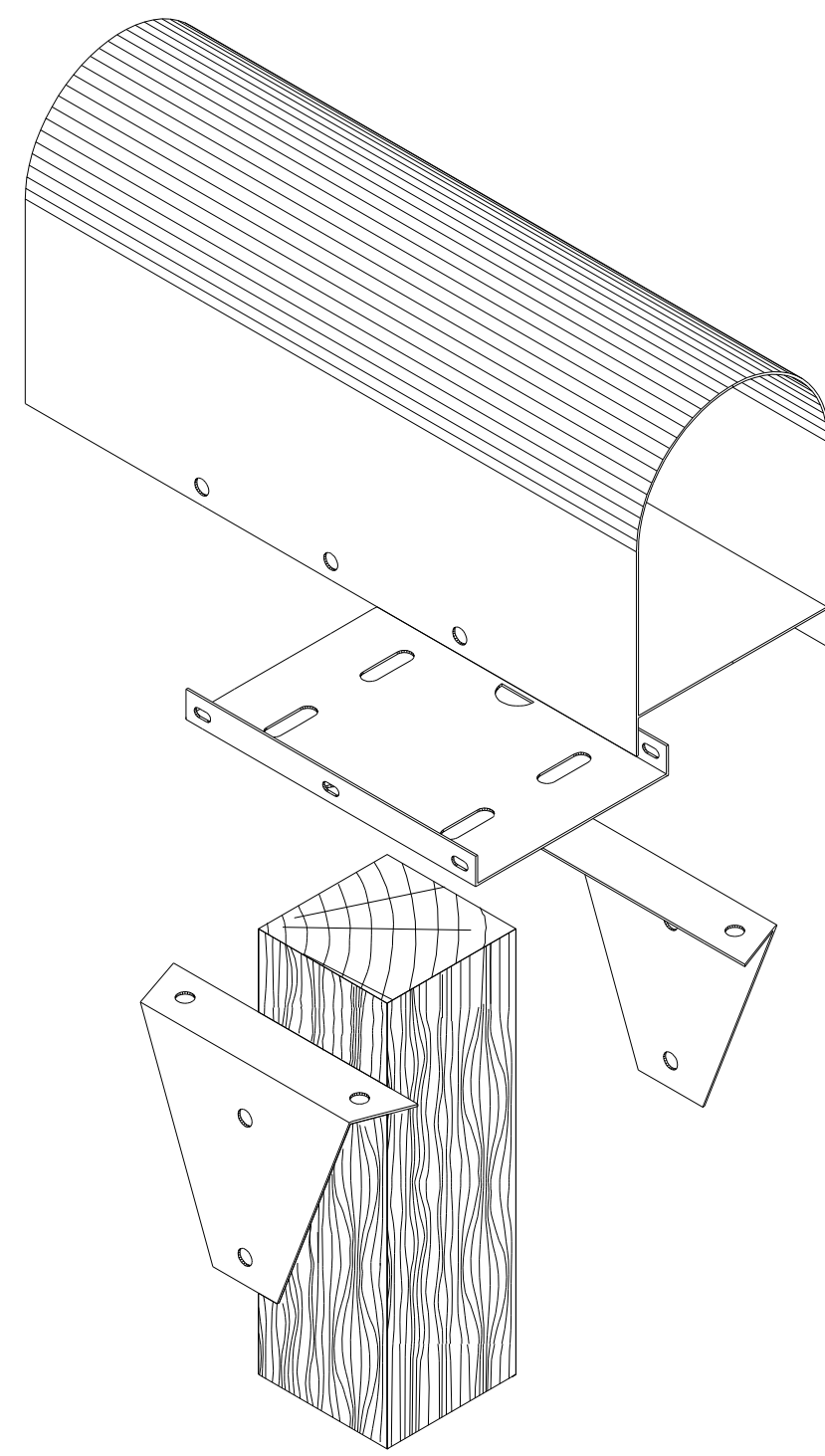
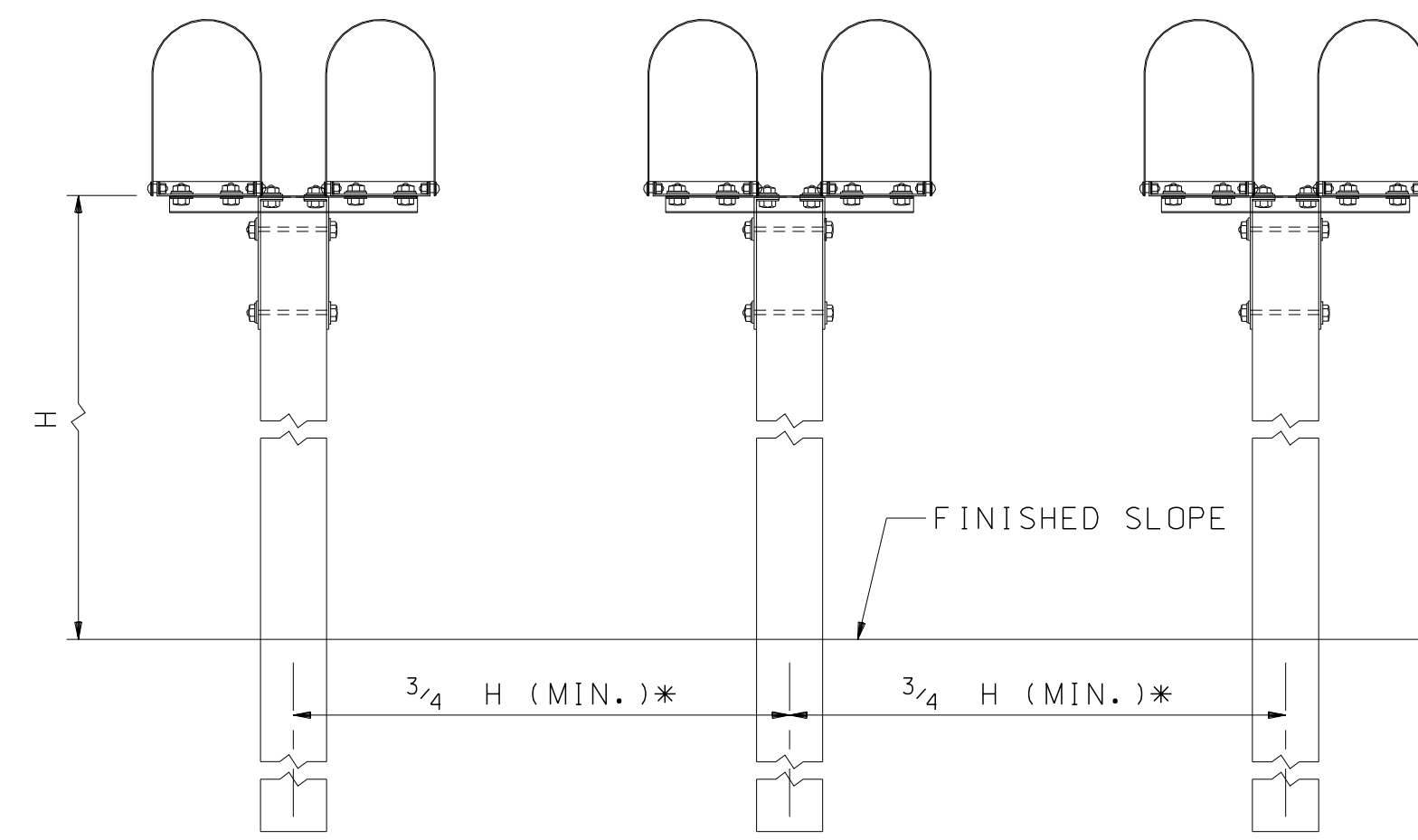


REVISION DATE
07-13-2001
06-16-2010
02-25-2016

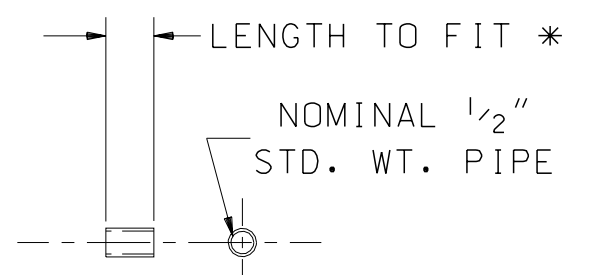
*DGN FILE NAME MB-1



EXPLODED VIEW
(SEE NOTE NO. 1)

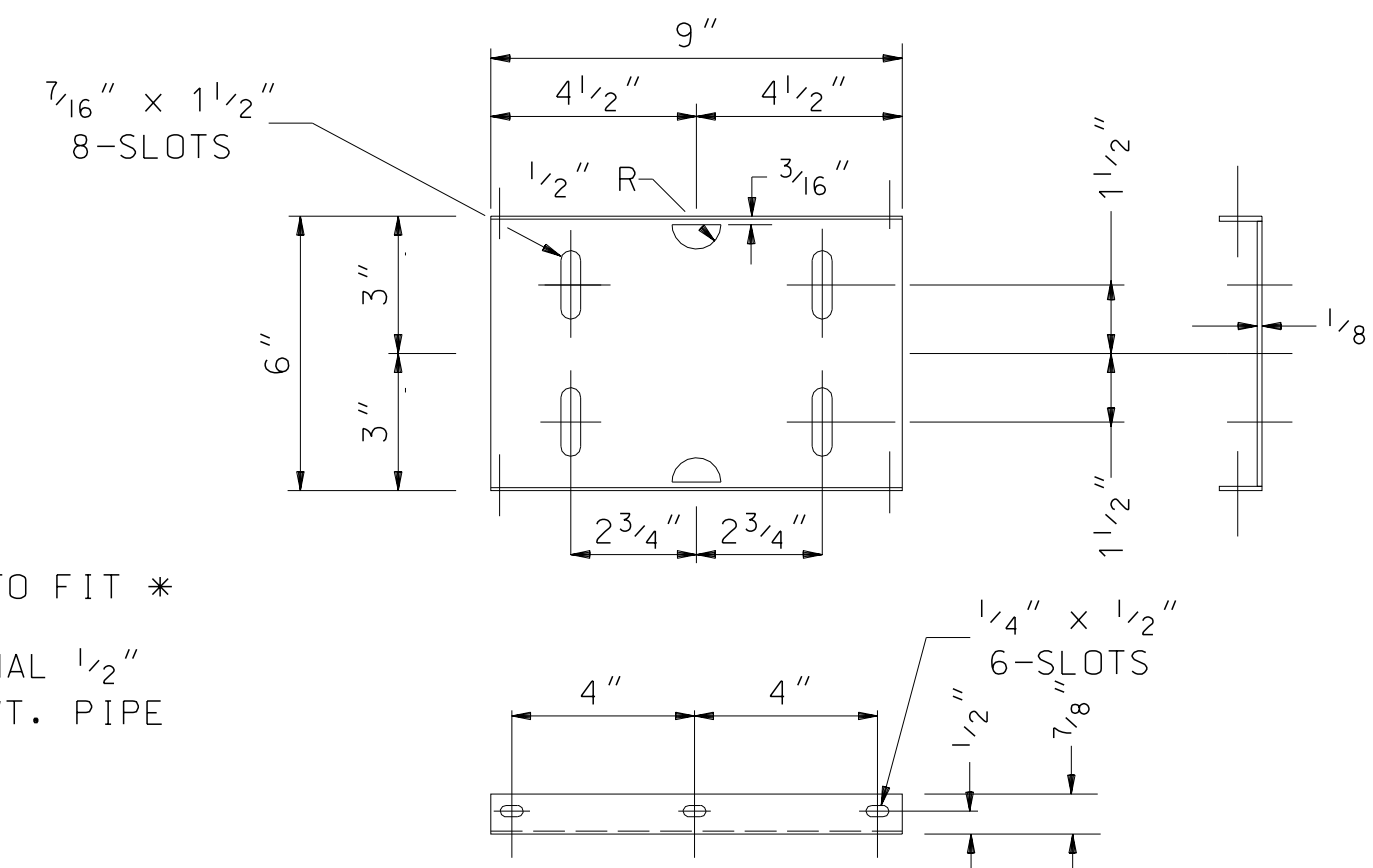


SPACING FOR MULTIPLE POST INSTALLATION
* FULL HEIGHT PREFERABLE

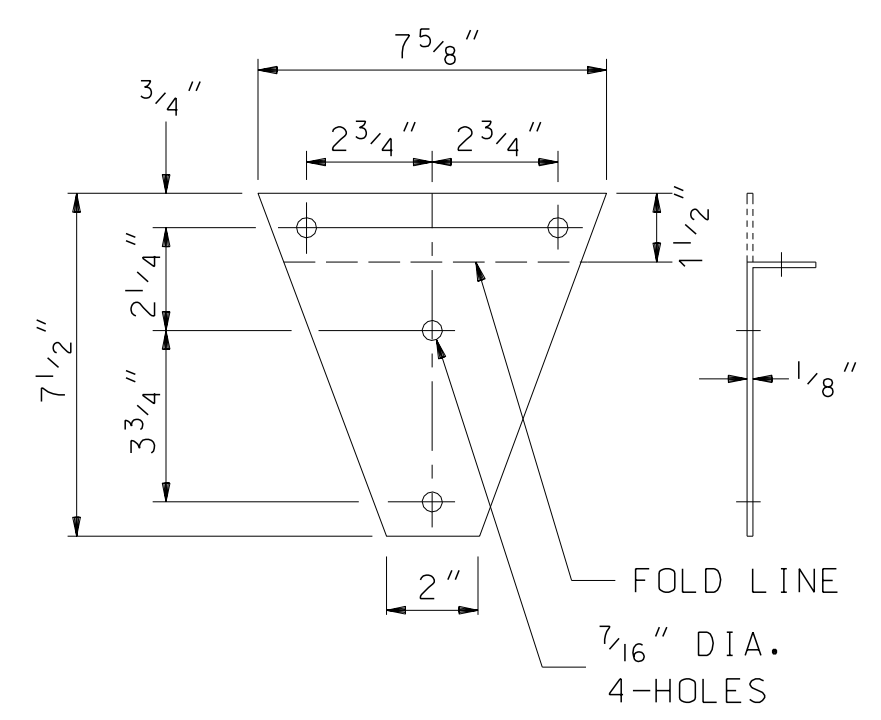


SPACER

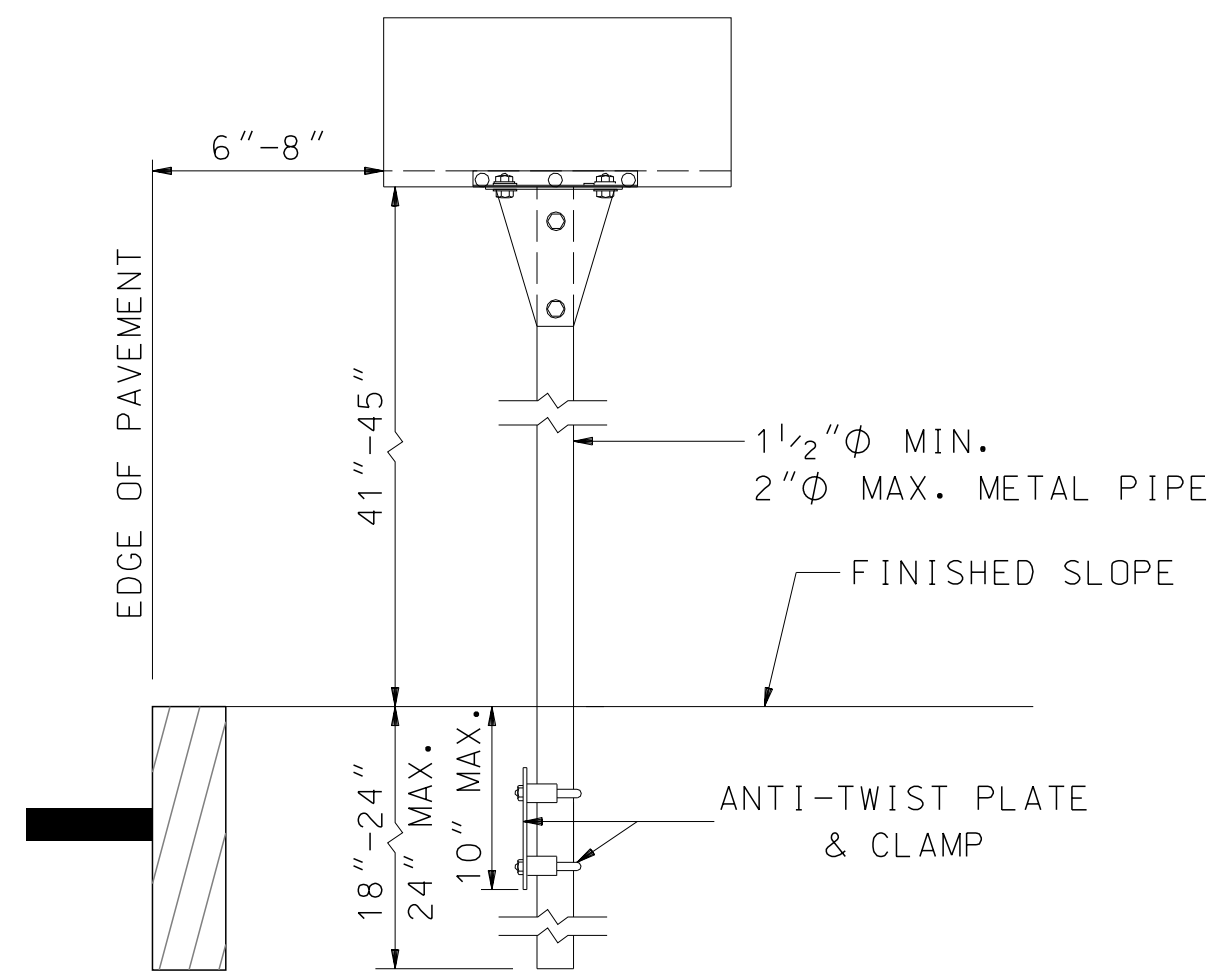
* STANDARD MAILBOX WIDTHS ARE 6 1/2", 8", AND 11 1/2"



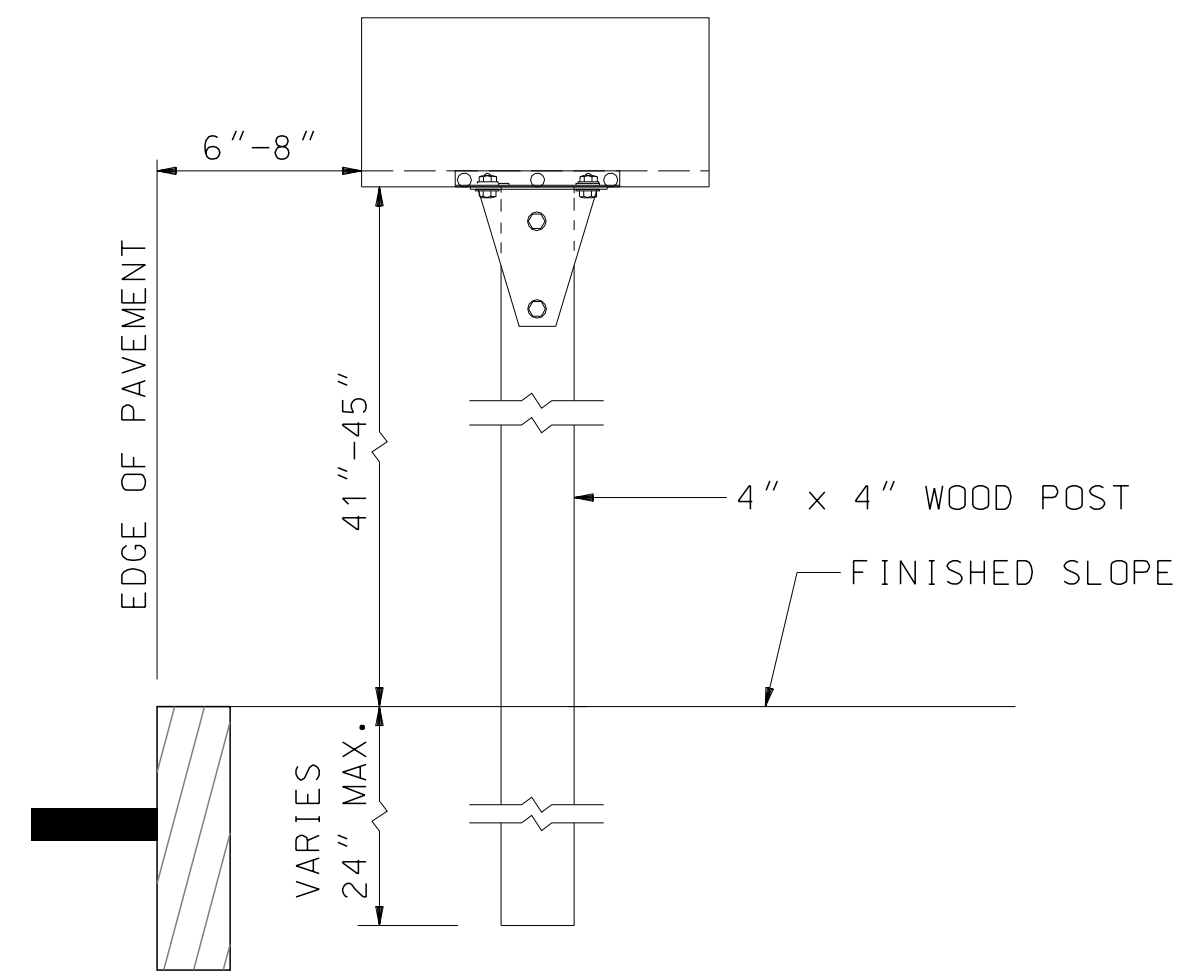
PLATFORM
(SEE NOTE NO. 1)



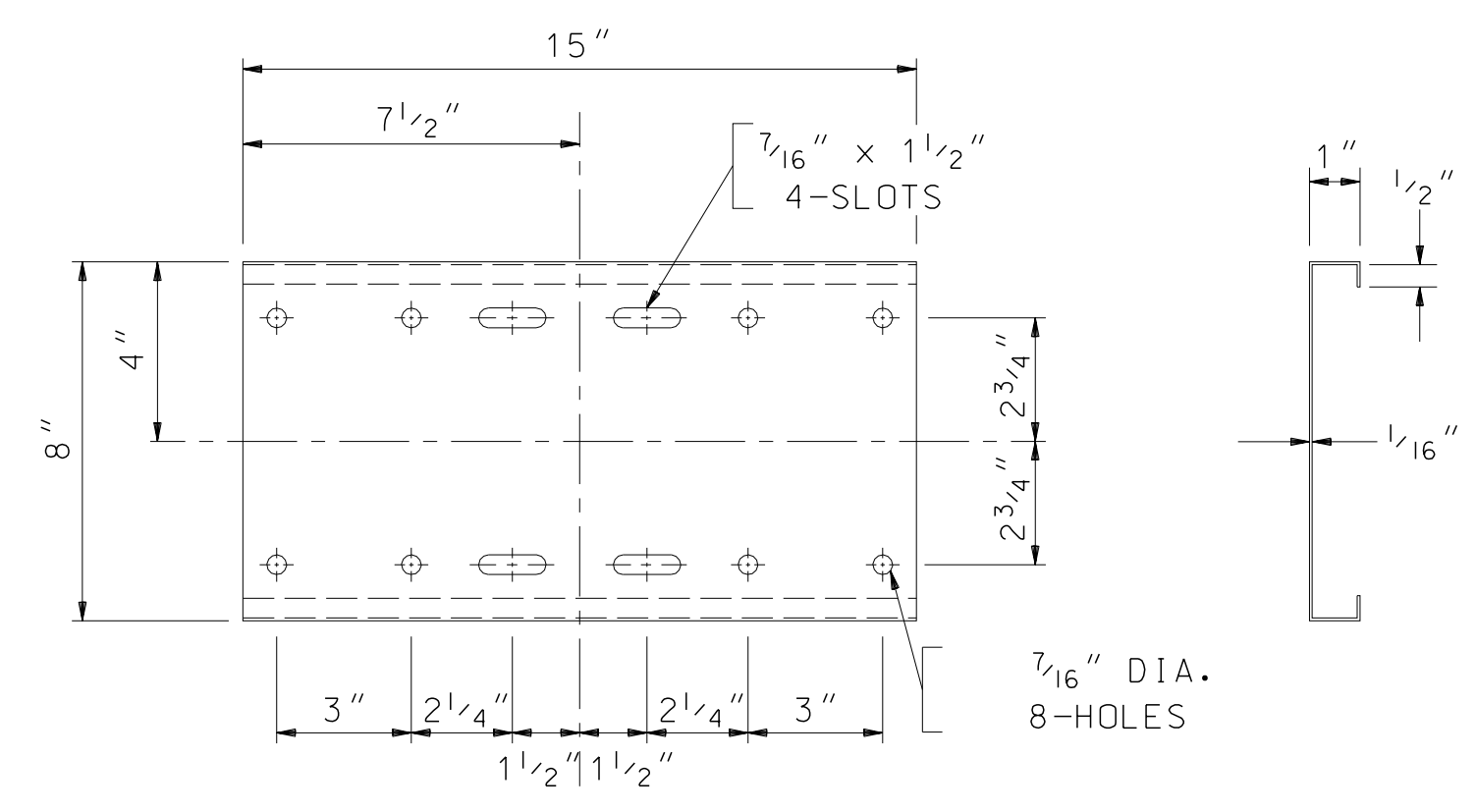
BRACKET
(SEE NOTE NO. 1)



METAL POST
(SEE NOTE NO. 7)



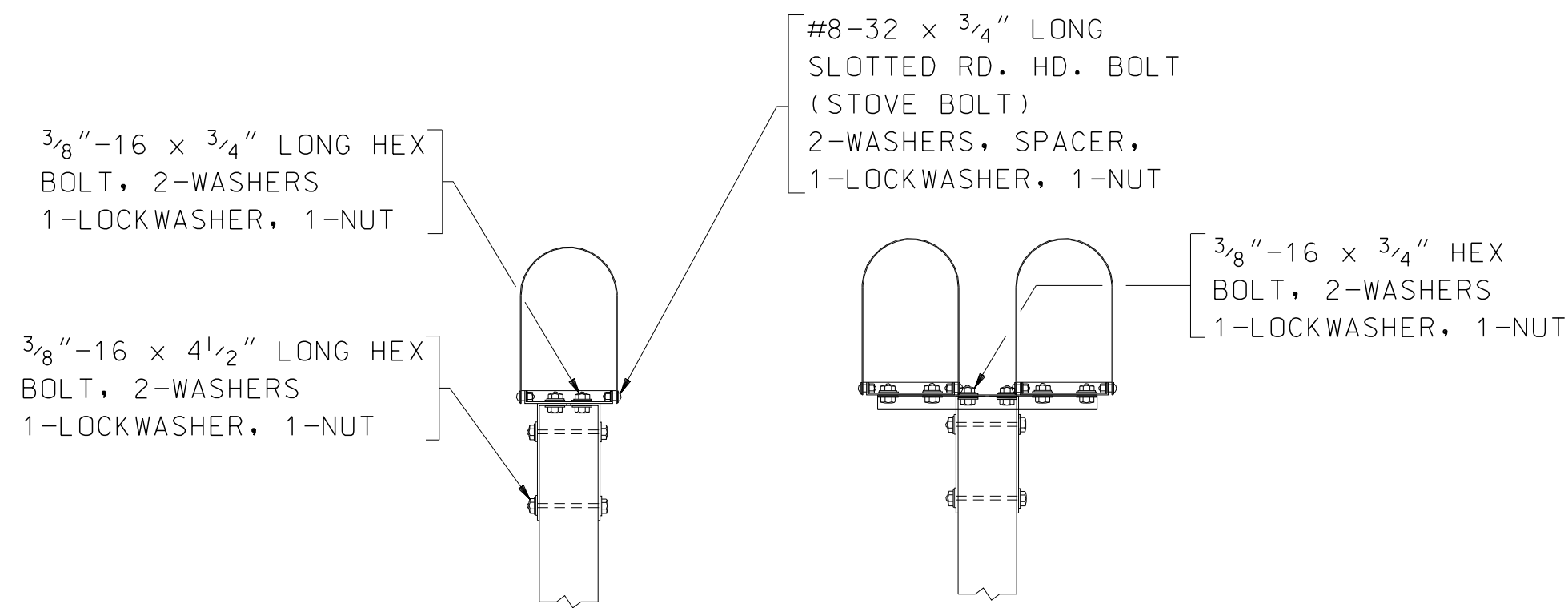
WOOD POST
(SEE NOTE NO. 7)



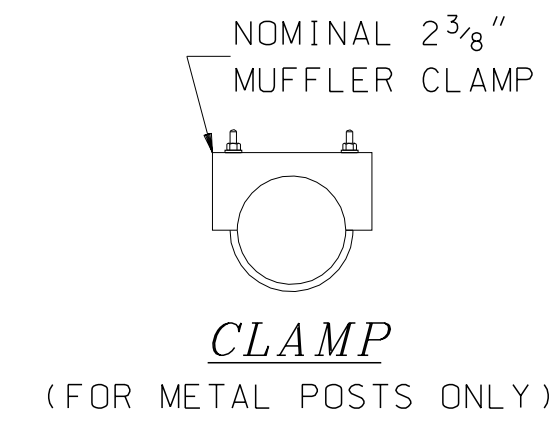
SHELF
(SEE NOTE NO. 1)

GENERAL NOTES

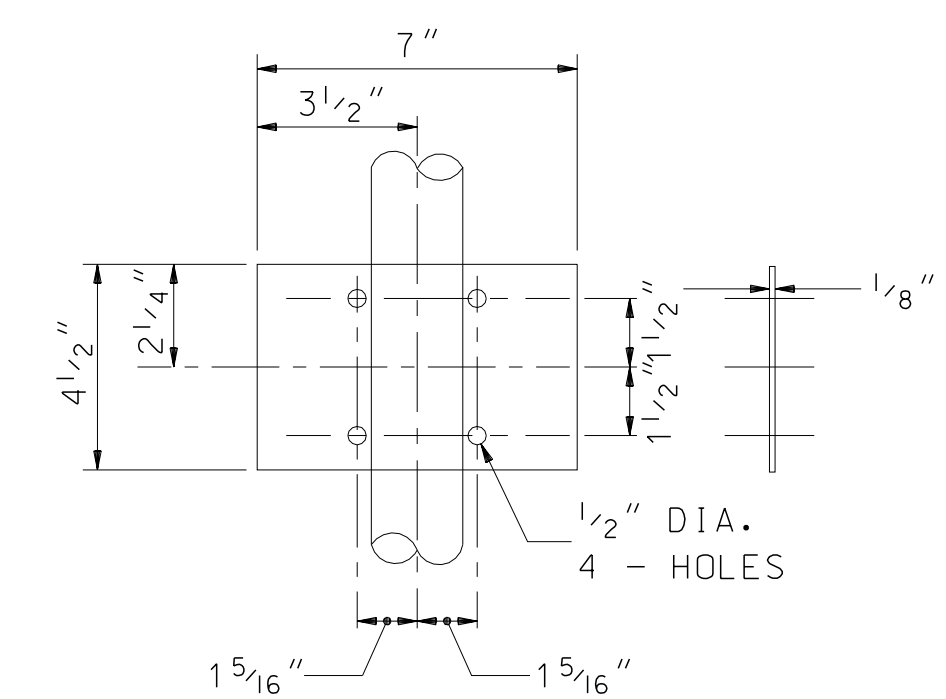
1. THE MAILBOX SUPPORT ASSEMBLY SHOWN ON THIS SHEET IS AN EXAMPLE OF AN ACCEPTABLE NON-PROPRIETARY DESIGN.
2. NO MORE THAN TWO MAILBOXES MAY BE MOUNTED ON A SUPPORT STRUCTURE UNLESS THE SUPPORT STRUCTURE AND MAILBOX ARRANGEMENT HAVE BEEN SHOWN TO BE SAFE BY CRASH TESTING. HOWEVER, LIGHTWEIGHT NEWSPAPER BOXES MAY BE MOUNTED BELOW THE MAILBOX ON THE SIDE OF THE MAILBOX SUPPORT.
3. MAILBOX SUPPORTS SHALL NOT BE SET IN CONCRETE UNLESS THE SUPPORT DESIGN HAS BEEN SHOWN TO BE SAFE BY CRASH TESTS WHEN SO INSTALLED.
4. A SINGLE 4" x 4" SQUARE* OR 4" DIAMETER* WOOD POST OR A METAL POST WITH A STRENGTH NO GREATER THAN A 2" DIAMETER STANDARD STRENGTH STEEL PIPE AND EMBEDDED NO MORE THAN 24" INTO THE GROUND WILL BE ACCEPTABLE AS A MAILBOX SUPPORT. A METAL POST SHALL NOT BE FITTED WITH AN ANCHOR PLATE, BUT IT SHALL HAVE AN ANTI-TWIST DEVICE THAT EXTENDS NO MORE THAN 10" BELOW THE GROUND SURFACE.
* THESE DIMENSIONS ARE BOTH MAXIMUM AND MINIMUM
5. IN AREAS OF HIGH SNOWFALL, CANTILEVER DESIGNS MAY BE ADVANTAGEOUS. CANTILEVER SUPPORTS PERMIT WINDSHIELD CONTACT WITH THE MAILBOX WITHOUT THE VEHICLE FIRST CONTACTING THE POST, THEREFORE, AN APPROVED BREAKAWAY SUPPORT MUST BE USED.
6. FOR ADDITIONAL INFORMATION, REFER TO THE LATEST ADOPTED EDITION OF THE AASHTO - ROADSIDE DESIGN GUIDE - CHAPTER 11, ERECTING MAILBOXES ON STREETS AND HIGHWAYS.
7. CONTACT THE LOCAL POSTMASTER FOR OFFSET AND HEIGHT FROM EP WHEN INSTALLING IN UNCURBED AREAS.



ASSEMBLY HARDWARE



CLAMP
(FOR METAL POSTS ONLY)



ANTI-TWIST PLATE
(FOR METAL POSTS ONLY)

MAILBOX STANDARD
MAILBOX SUPPORT ASSEMBLY DETAILS