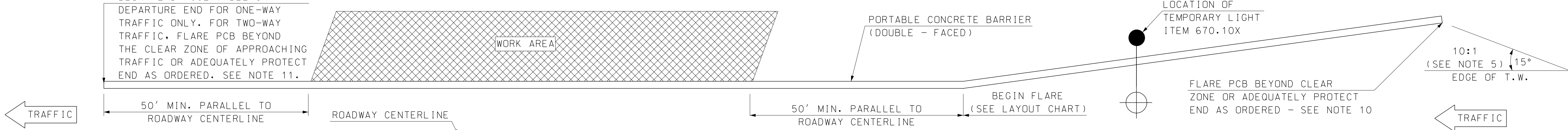


BLUNT END ACCEPTABLE ON DEPARTURE END FOR ONE-WAY TRAFFIC ONLY. FOR TWO-WAY TRAFFIC, FLARE PCB BEYOND THE CLEAR ZONE OF APPROACHING TRAFFIC OR ADEQUATELY PROTECT END AS ORDERED. SEE NOTE 11.

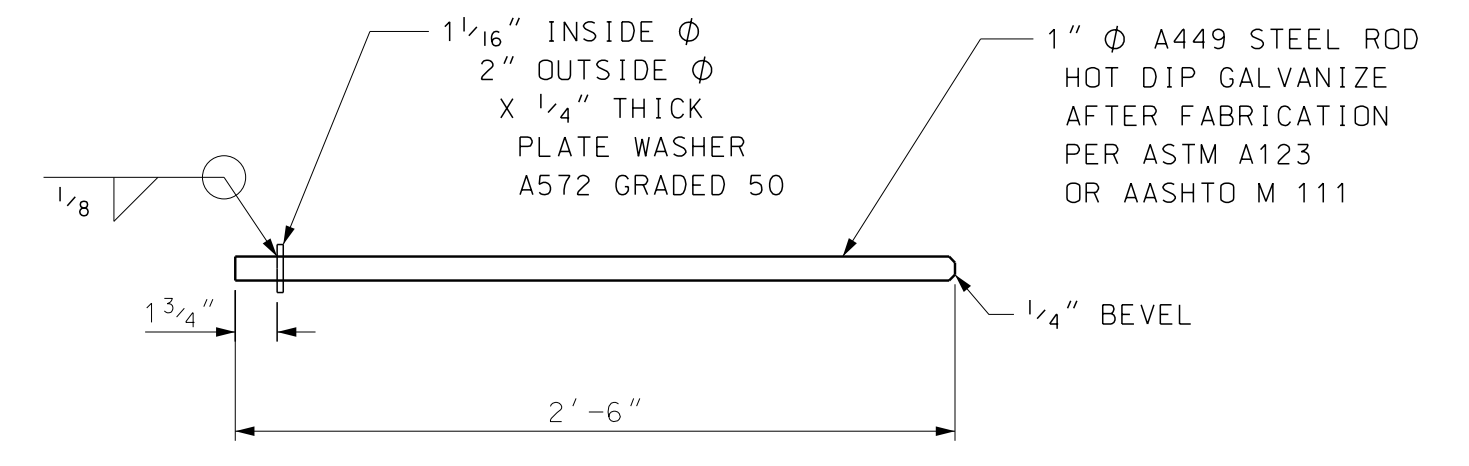


TRAFFIC OR TRAFFIC  
(SEE NOTE ABOVE)

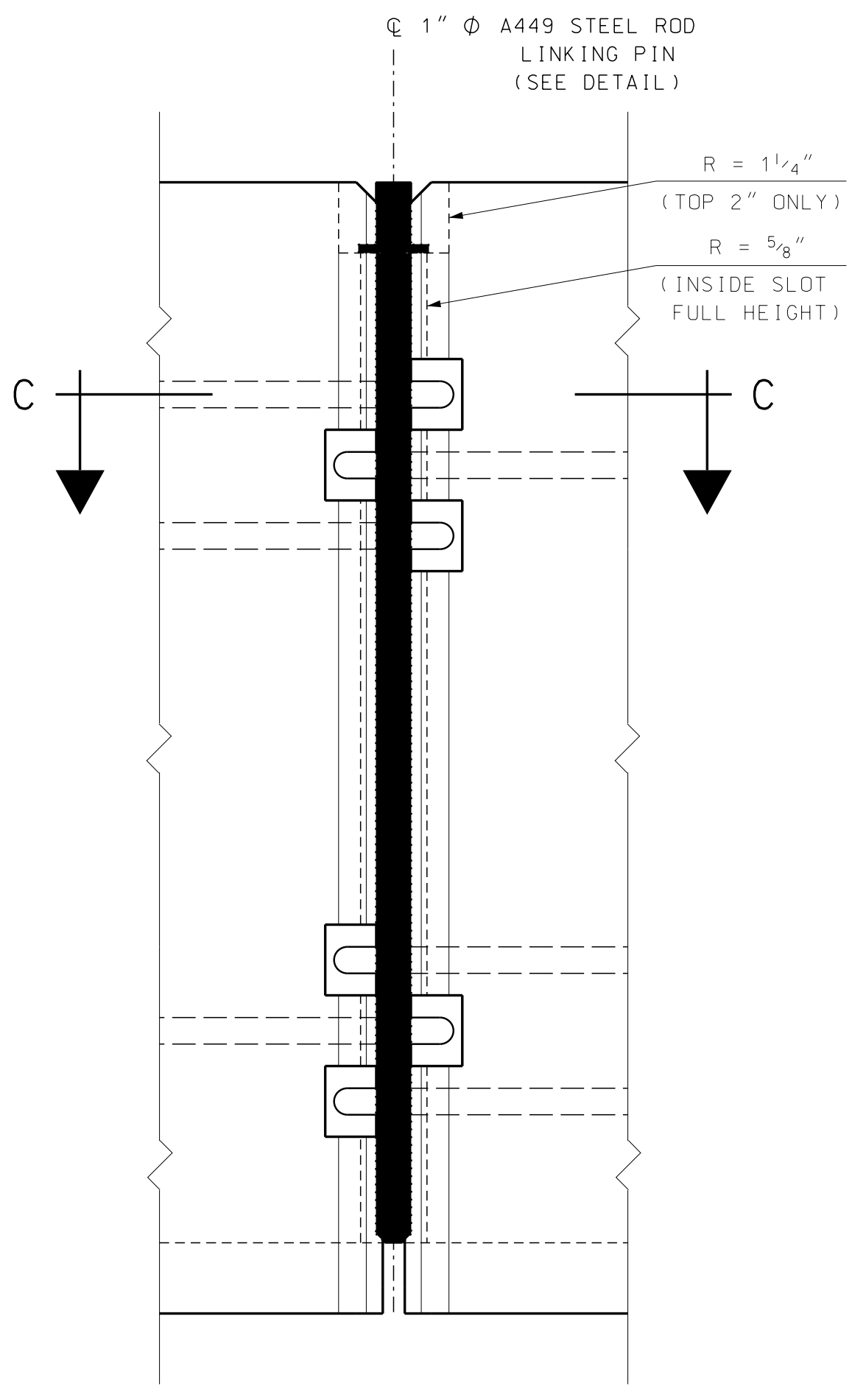
**LAYOUT OF PORTABLE CONCRETE BARRIER**  
(NTS)

OPERATING SPEED	DESIRABLE LATERAL OFFSET FROM T.W. **	MAXIMUM FLARE RATE * (FREE-STANDING)	MINIMUM LENGTH OF PCB SYSTEM
≤ 30 MPH	2'	7:1	
40 MPH	5'	9:1	
50 MPH	6.5'	11:1	
60 MPH	8'	13:1	
70 MPH	10'	15:1	
ALL SPEEDS	15' MAX. ***		200'

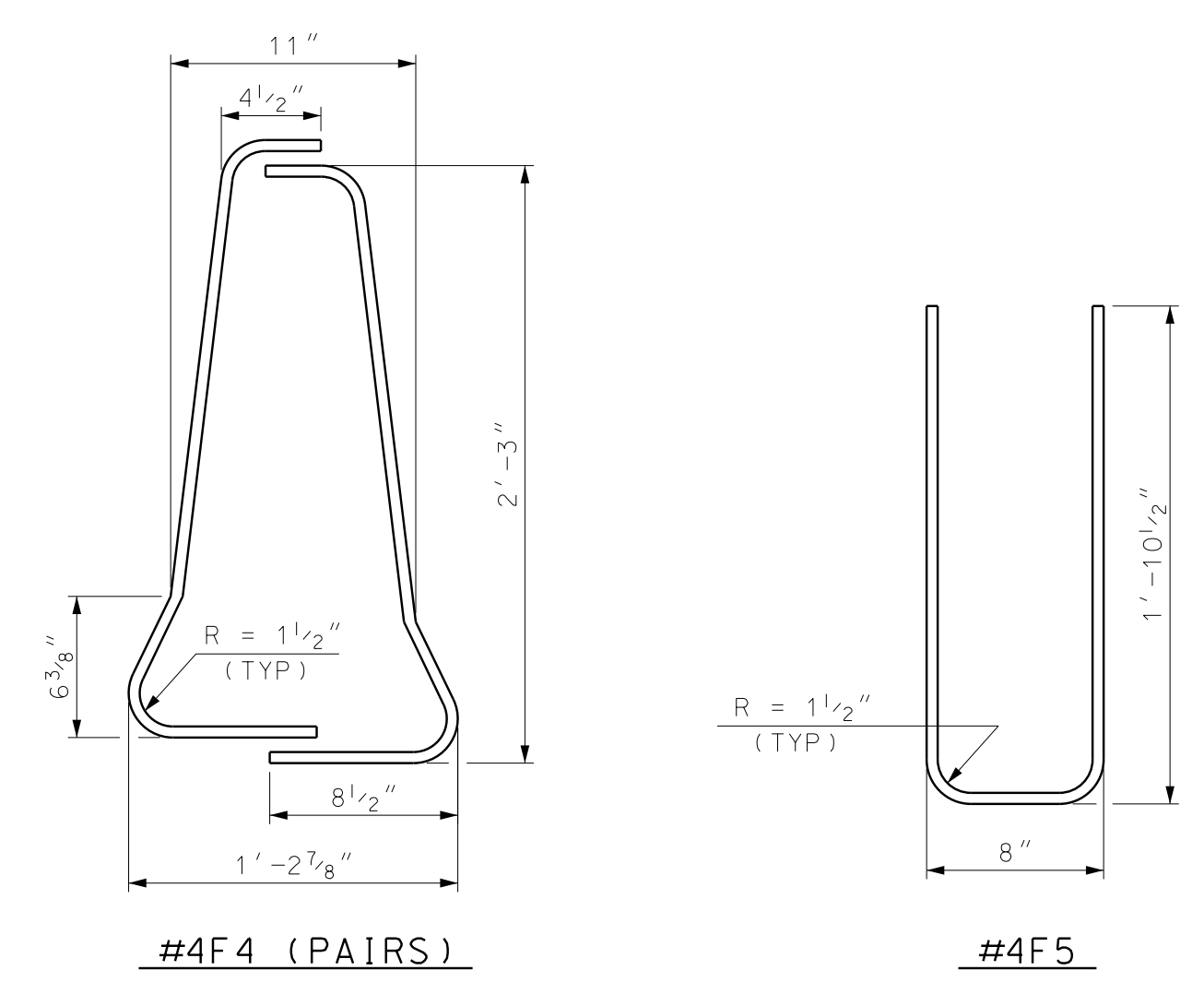
\* MEASURE FLARE FROM A LINE PARALLEL TO THE ROADWAY T.W., WHETHER ON A CURVE OR A TANGENT.  
\*\* FOR RESTRICTED SITE CONDITIONS, LESSER OFFSETS MAY BE PERMITTED BY THE ENGINEER.  
\*\*\* TO REDUCE POTENTIAL FOR HIGH-ANGLE IMPACTS (> 15°)



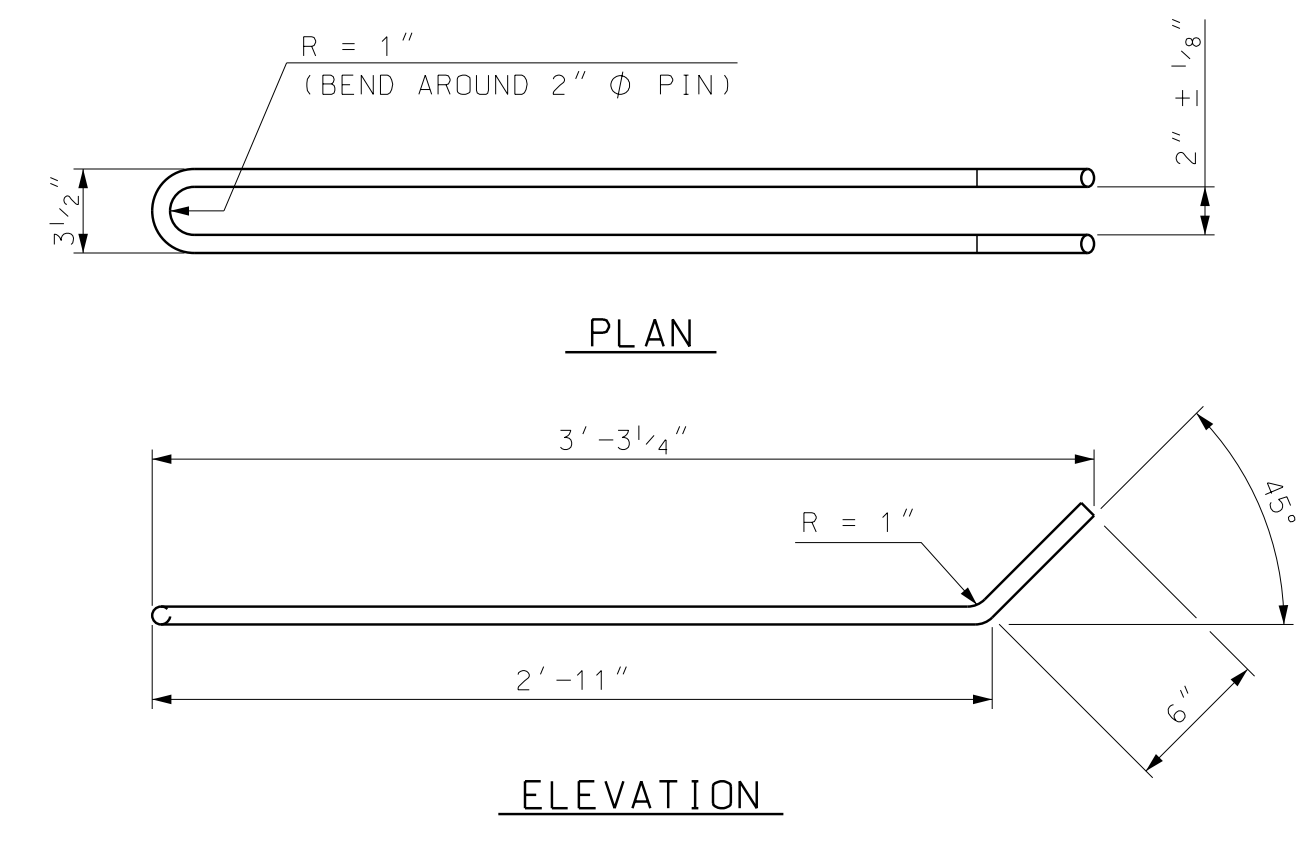
**LINKING PIN**  
SCALE: 1 1/2" = 1'-0"



**ELEVATION**



**BENDING DIAGRAMS**  
SCALE: 1 1/2" = 1'-0"

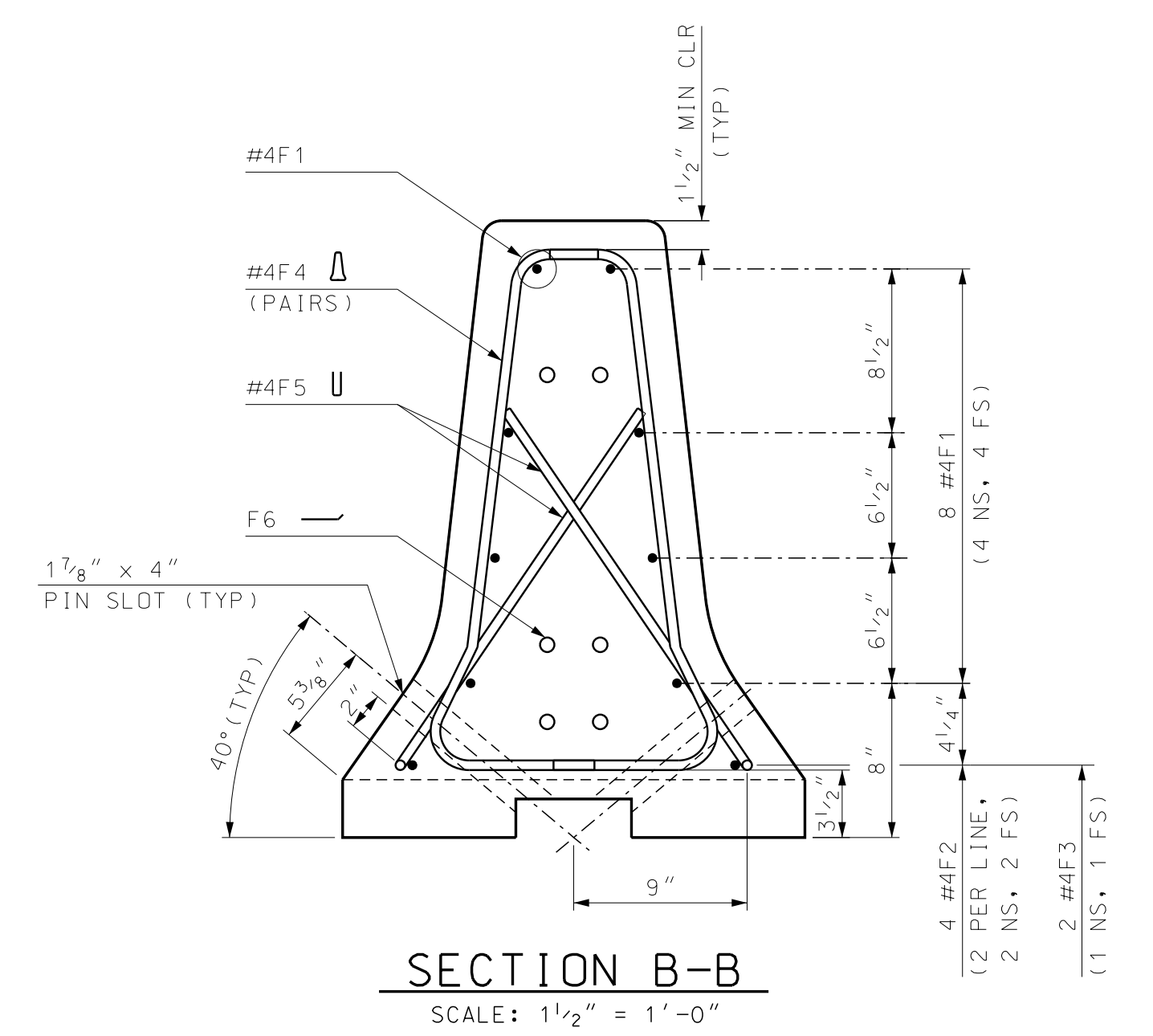


**F6 3/4" Ø LOOP BAR**  
SCALE: 1 1/2" = 1'-0"

6-LOOP BARS (7'-2" TOTAL LENGTH)  
(ASTM A36) HOT DIP GALVANIZE AFTER FABRICATION PER ASTM A123 OR AASHTO M 111

MK	SIZE	QTY	LENGTH	TYPE
F1	#4	8	12'-0"	
F2	#4	4	2'-2"	-
F3	#4	2	4'-8"	-
*F4	#4	22	3'-4"	U
F5	#4	6	4'-5"	U

\*11 PAIRS



**SECTION B-B**  
SCALE: 1 1/2" = 1'-0"

**GUARDRAIL STANDARD**  
*PORTABLE CONCRETE BARRIER*  
(2 OF 2)

**STANDARD NO. GR-24**  
REVISION DATE  
\*DGN FILE NAME  
GR-24

**STANDARD PLANS**  
New Hampshire **DOT** Department of Transportation  
**STANDARD NO. GR-25**