

# Peterborough 27712

## Public Officials Meeting



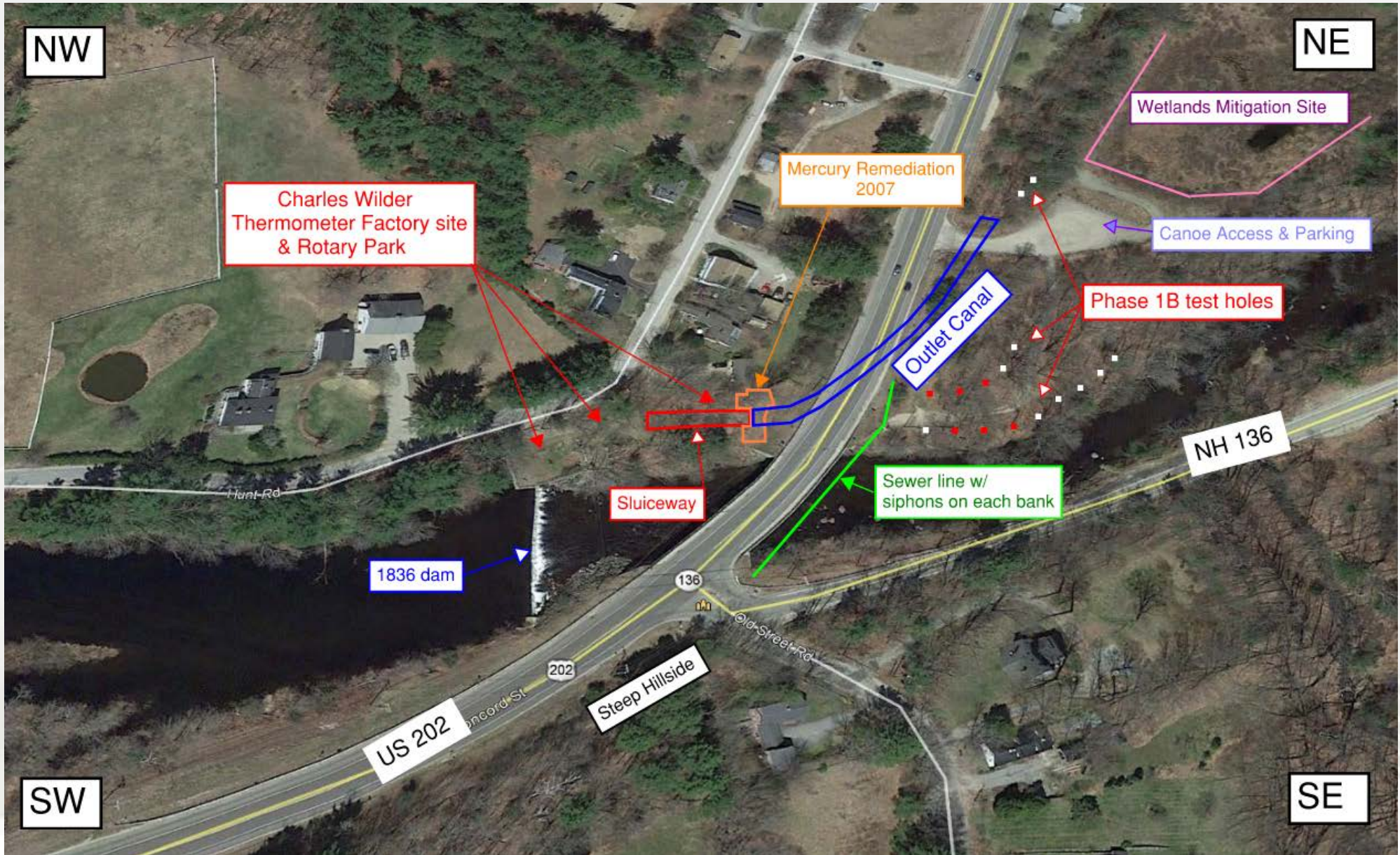
**U.S. 202 & N.H. 123 over the Contoocook River**  
**March 16, 2021**





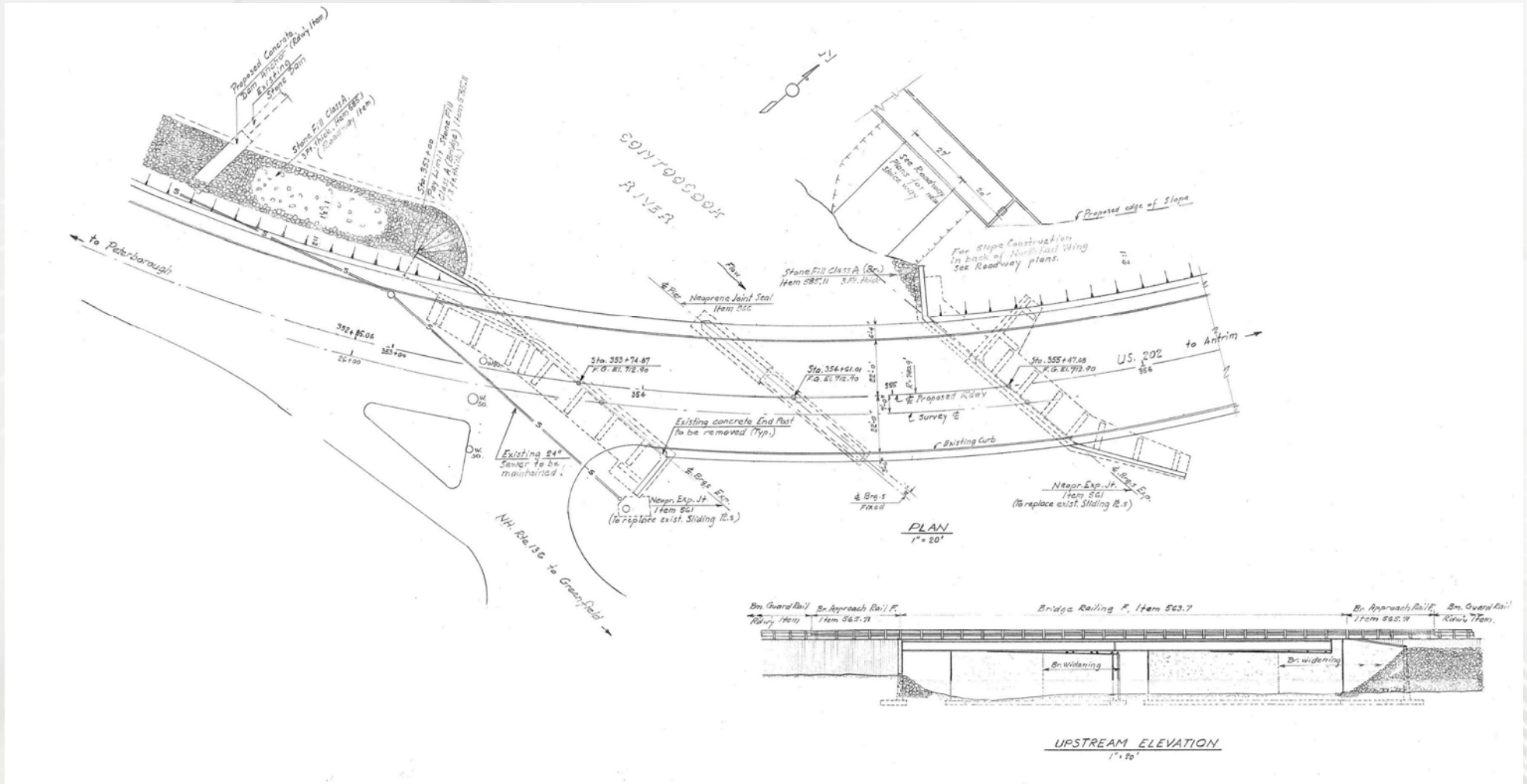


# Bridge Site





# Bridge Plan and Elevation View



## Existing Bridge Details

- Constructed in 1942 and widened in 1974.
- Scour mitigation complete 2018-2019.
- 176' long, curved (corded), two span steel girder bridge
  - Reinforced concrete deck
  - Skewed +/- 53 degrees
- Abutments & Pier are reinforced concrete on spread footings
- Roadway width: 44'-0" (12' - 10' typical)
- 6'-4" Sidewalk on upstream side
- Out to out 53'-10"
- 6,915 vehicles per day, approx 7% trucks 2018
- Added to Red List in 2012, currently #18 on 2019 list
- Overall bridge condition is rated 4 (Poor)

## Existing Deck Condition



- Deck condition is rated 4 (Poor)



# Existing Superstructure Condition



- Superstructure condition is rated 5 (Fair)





# Existing Substructure Condition



- Substructure condition is rated 4 (Poor)



# Bridge Considerations

- Bridge Rehabilitation
  - Bridge is scour critical.
  - Service life less than bridge replacement.
  - Higher long-term maintenance costs.
- Bridge Replacement
  - Upstream shift
    - Significant impacts to North Village Dam.
    - Potential impacts to Wilder Thermometer site / Rotary Park.
  - Downstream shift
    - Potential impact to Town sewer line & siphons.
    - Would impact to NH Route 136 intersection.
  - Replacement in existing location
    - Temporary Bridge cost & impacts or
    - Long a detour

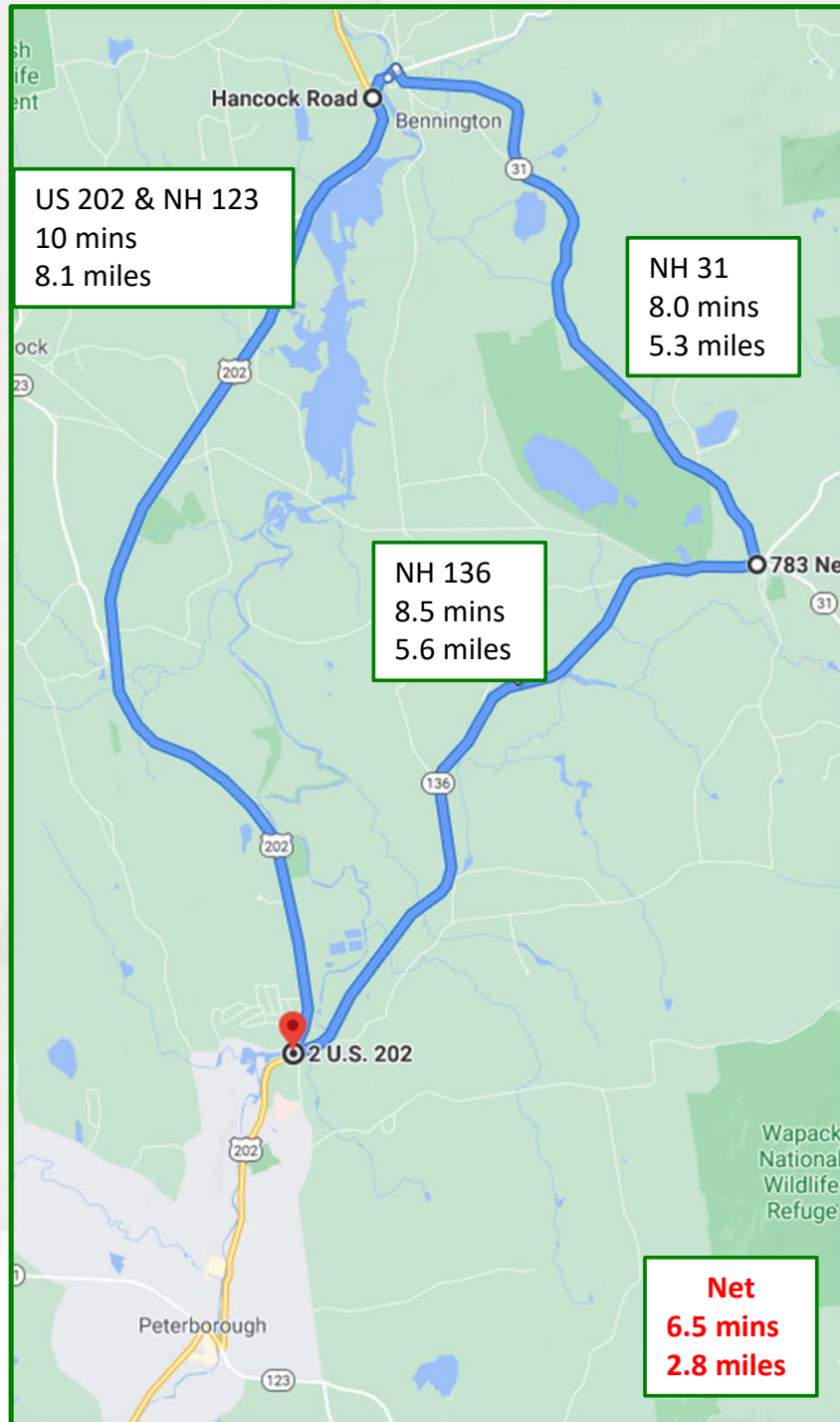
# Traffic Control Considerations



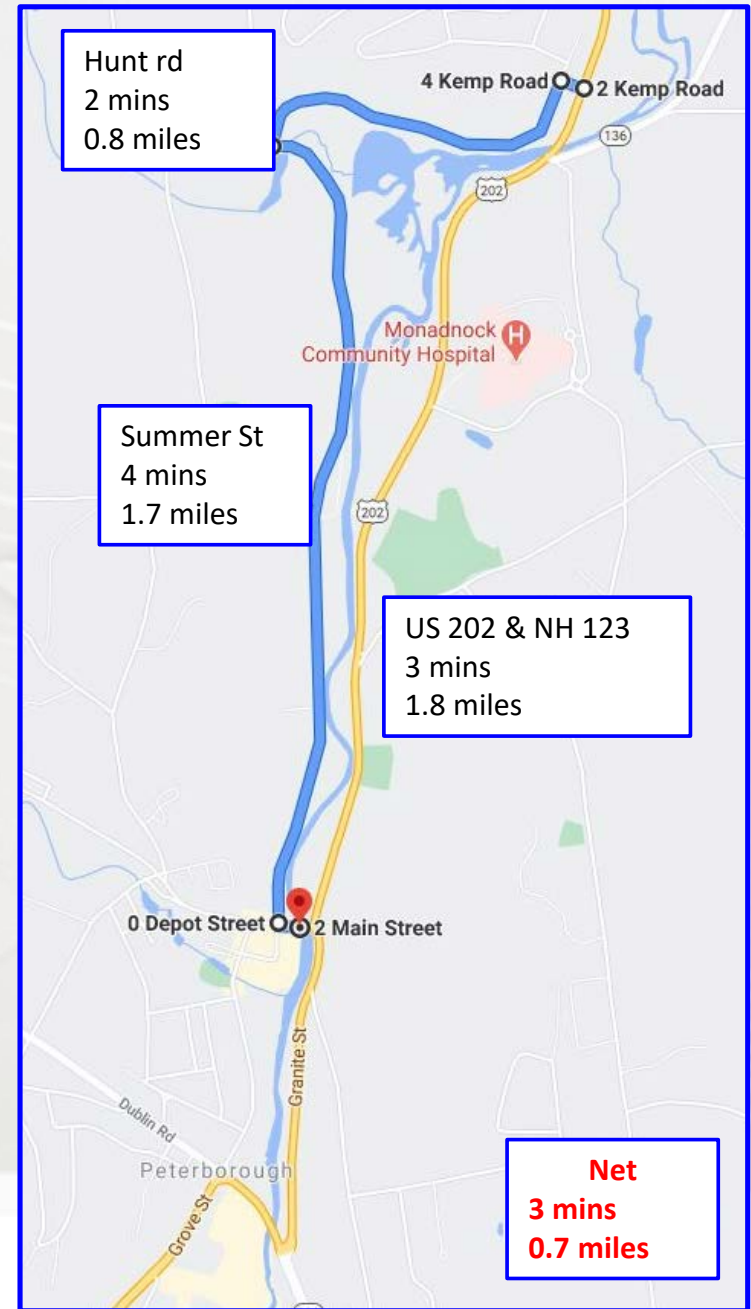
- Traffic control alternatives
  - Phased construction
  - Detours
  - Temporary bridge
  
  - Could include temporary one-ways or road closures (Old Street Rd ?)



# State Detour



# Local Detour



# Cultural & Historic Resource Considerations

## Bridge

- Bridge located in Peterborough's North Village, potential historic district? Hasn't yet been reviewed for the National Register of Historic Places.
- Bridge is not eligible for listing on the National Register.

## Project Area

- NW - Existing surface features in NW quadrant from the Wilder Thermometer Factory (circa 1860 to 1903)
- NE - Segment of the mill's outlet canal filled during 1942 construction of the roadway. A surviving portion extends into NE quadrant.
- SE - 19<sup>th</sup> century "R. Day" house and barn site once stood at existing bridge's south abutment. Archaeological monitoring during construction is recommended
- SW - Proximity of North Village Dam. (circa 1836)
- Additional residential buildings greater than 50 years old.  
Inventories may be needed to determine National Register eligibility.



# Sluice Way & Wilder Mill Complex



NW quadrant



## SE quadrant



## NE quadrant





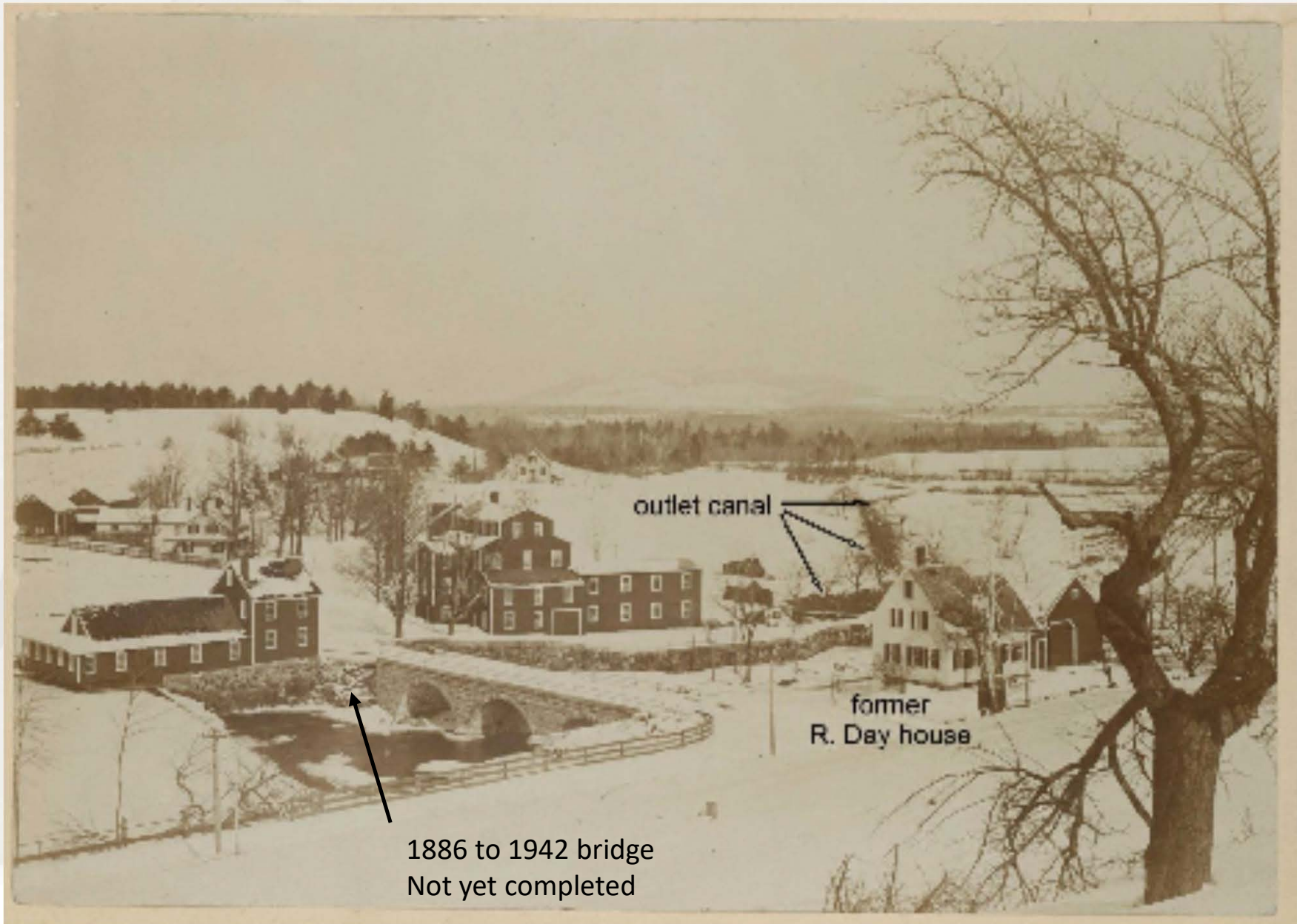
# 1836 - North Village Dam



SW quadrant



# Mill, Canal & R. Day house ca. 1890s



1886 to 1942 bridge  
Not yet completed



## Historic Resource Consultation (section 106)

- Anyone with information or concerns about potential historic resources can contact the NHDOT Bureau of Bridge Design or Bureau of Environment.
- To be more formally involved, you can request to participate in project review as a consulting party under Section 106 of the National Historic Preservation Act. Please contact Jamie Sikora at FHWA to request to become a consulting party:

[Jamie.Sikora@fhwa.dot.gov](mailto:Jamie.Sikora@fhwa.dot.gov)

<https://www.nh.gov/dot/org/projectdevelopment/environment/units/program-management/documents/Bureau16consultingpartyhandout-updatedAug2011.pdf>



## Natural Resources Considerations

- Essential Fish Habitat
- T&E (threatened & endangered) Species – NLEB (northern long eared bat)
- Stormwater Treatment: TBD
- Floodplain (100 year)
- Possible PRA (Priority Resource Area) Impacts (floodplain wetlands)
- Wetlands Permit - Contoocook River (Tier 3) and wetlands
- Shoreland Permit: TBD

# Project Status

- NEPA and Cultural Resource Review are underway  
(National Environmental Policy Act)
- Present initial finding to town of Peterborough
- Gather local insights & observations from town of Peterborough



# Your Input is Needed

- Emergency Response Routes
- Mutual Aid
- School Bus Routes
- Historic Concerns
- Past Flooding Concerns
- Bicycle and Pedestrian Concerns
- Local events
- Town Utilities upgrades/work (Sewer, Water, Dam)
- Thoughts on Old Street road (one-way or closure)
- Thoughts on detours (all, one-way, trucks)
- Other Concerns



Thank you for your insights



# 1836 Dam cross-section

