

Wolfeboro 29615

NH Route 28 Improvements

Project Advisory Committee
Meeting #5

October 13, 2022

Agenda

- Welcome and Introductions
- Recap and Update
- Corridor Typical Sections
- Intersection Alternatives
- Drainage Alternatives
- Schedule Update & Next Steps

Welcome and Introductions

- Town of Wolfeboro
 - Tavis Austin, Director of Planning and Development
- Stantec
 - Gerard Fortin, PE, Principal in Charge
 - David McNamara, PE, Project Manager
- NHDOT
 - Jason Ayotte, PE, Project Manager
 - Corey Spetelunas, PE, Group Leader
 - Michael Hlushuk, Design Engineer
 - Samantha Fifield, PE, District 3

Project Information & Website

Project:	Wolfeboro 29615	Status: Design
Scope of Work:	Safety and mobility improvements on Route 28 from the Alton/Wolfeboro Town line to Route 109 (Pickering Corner)	
Contact:	Jason M. Ayotte, P.E. Jason.M.Ayotte@dot.nh.gov Telephone: (603) 271-3921	
Available Files:	<ul style="list-style-type: none"> • Location Map • Route 28 Corridor Preliminary Project Planning Report • Project Roll Plan • Public Involvement Plan 	
Project Advisory Committee Meeting #4 August 11, 2022 Wolfeboro Town Hall	Agenda	
Project Advisory Committee Meeting #3 June 30, 2022 Wolfeboro Town Hall	<ul style="list-style-type: none"> • Agenda • Presentation • Minutes 	
Project Advisory Committee Meeting #2 Thursday, July 8, 2021 Wolfeboro Town Hall	<ul style="list-style-type: none"> • Agenda • Presentation • Meeting Minutes 	
Project Advisory Committee Meeting #1 December 5, 2019 Wolfeboro Town Hall	<ul style="list-style-type: none"> • Presentation • Meeting Minutes 	

<https://www.nh.gov/dot/projects/wolfeboro29615/index.htm>

<https://www.wolfeboronh.us/planning-development/links/2024-nhdot-route-28-project-materials>

Corridor Limits and Zones

Zone 2



Zone 1



Corridor Limits and Zones



Zone 4



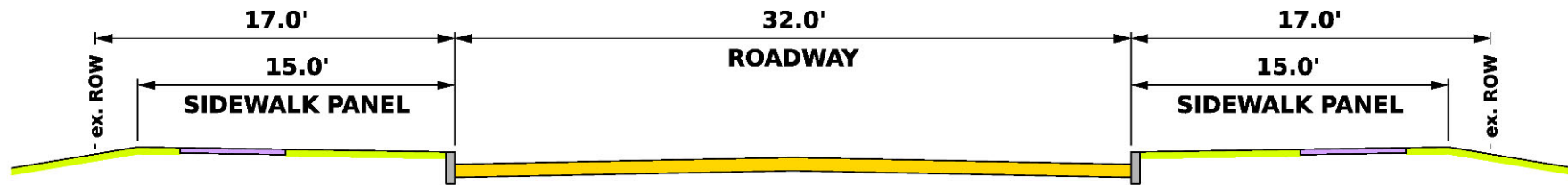
Zone 3



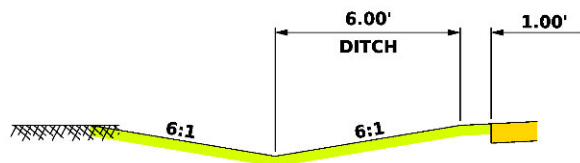
Zone 2



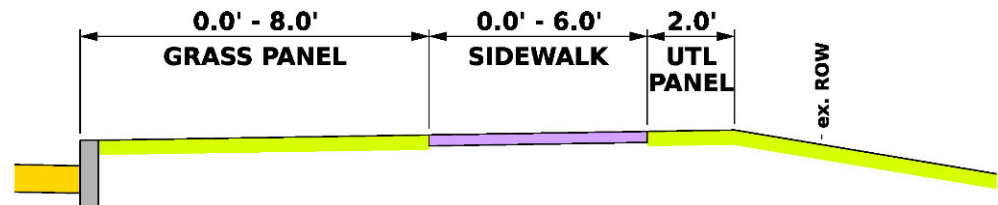
Corridor Base Typical Section



Full Section – 66' Right of Way

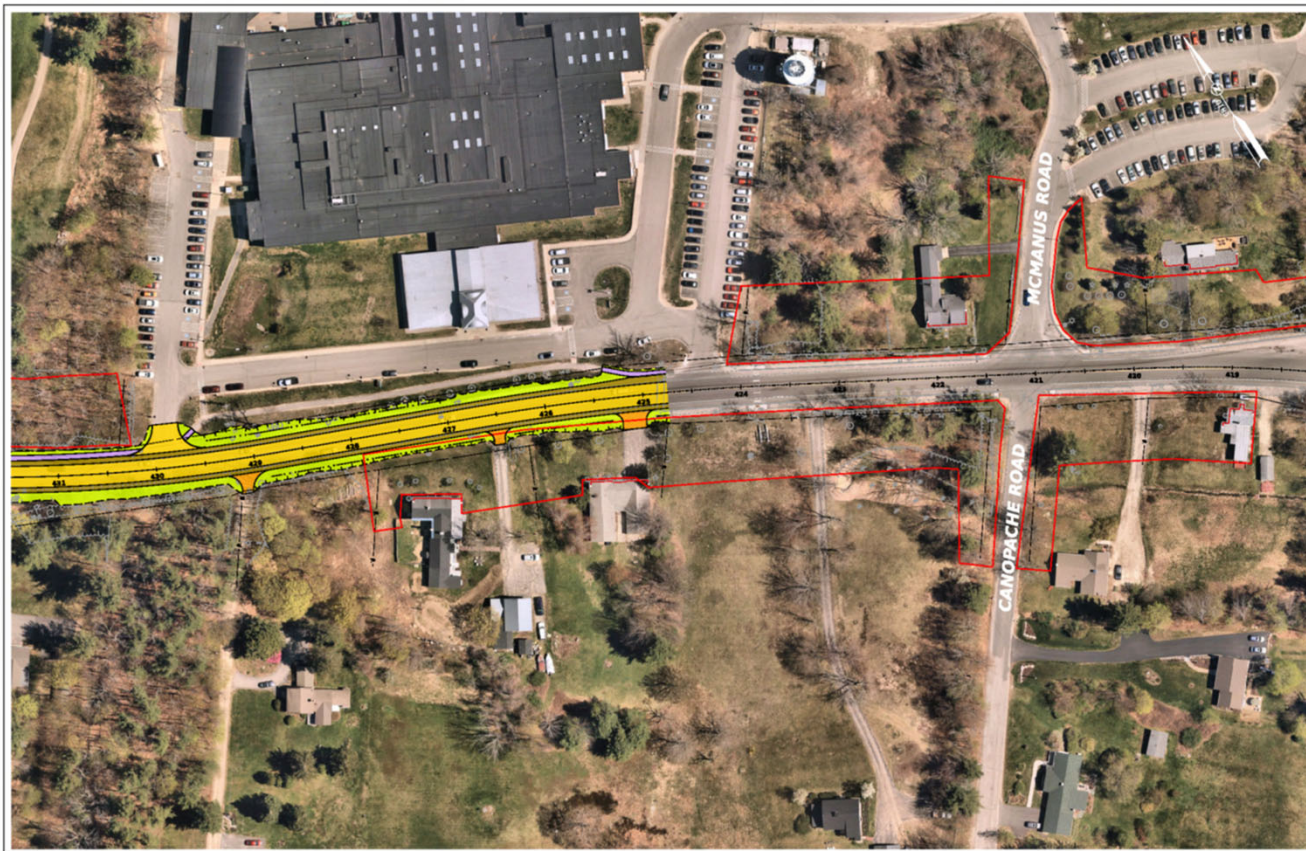


No Sidewalk



Sidewalk Panel

Zone 1 – Pleasant Valley/Kingswood Regional Schools

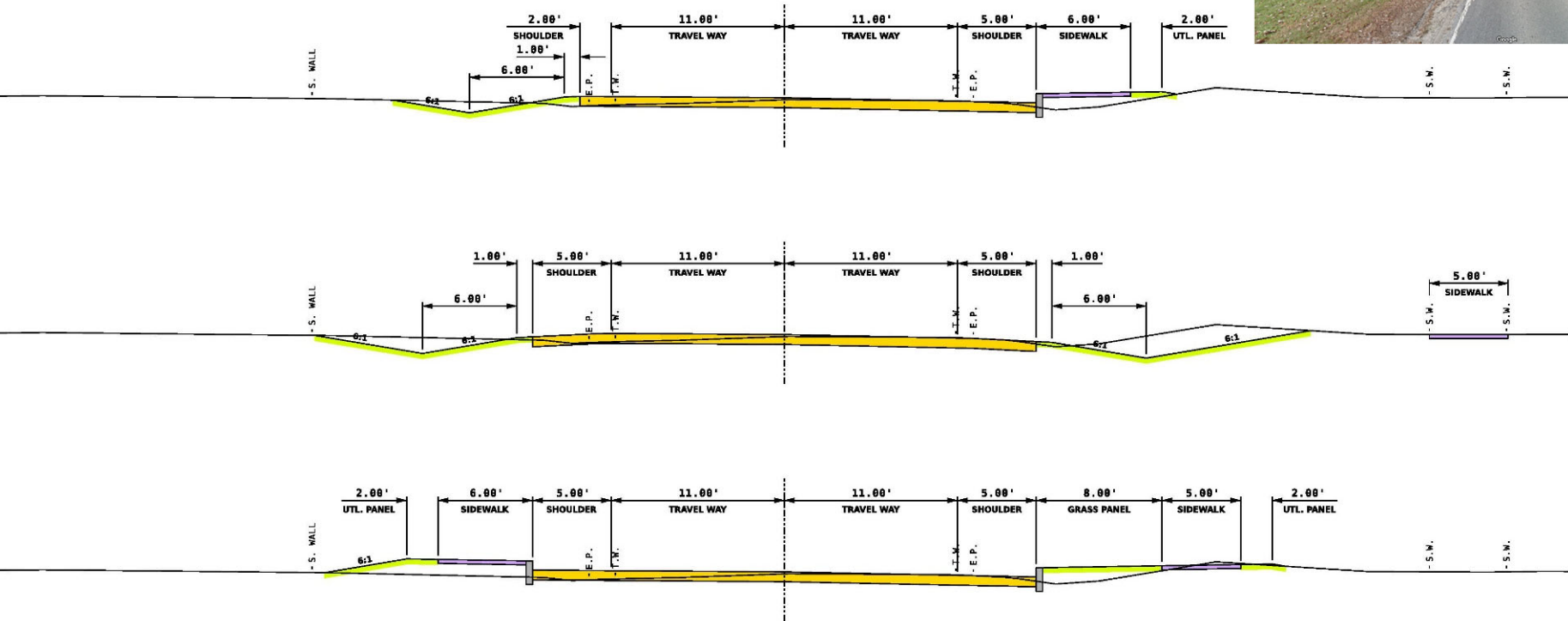


Abutter Conversation

Kingswood Regional Schools

- Bus circulation
- Resource officer
- Open northerly drive radius
 - Allow north/south exit for buses
- Buses held up in morning at Pickering Corner
- Emergency response during peak periods
- Realign center drive
- Traffic management during construction

Zone 1 Typical Sections



Kingswood Regional Schools

Zone 2 – Kingswood Golf Course to Old Mill Road

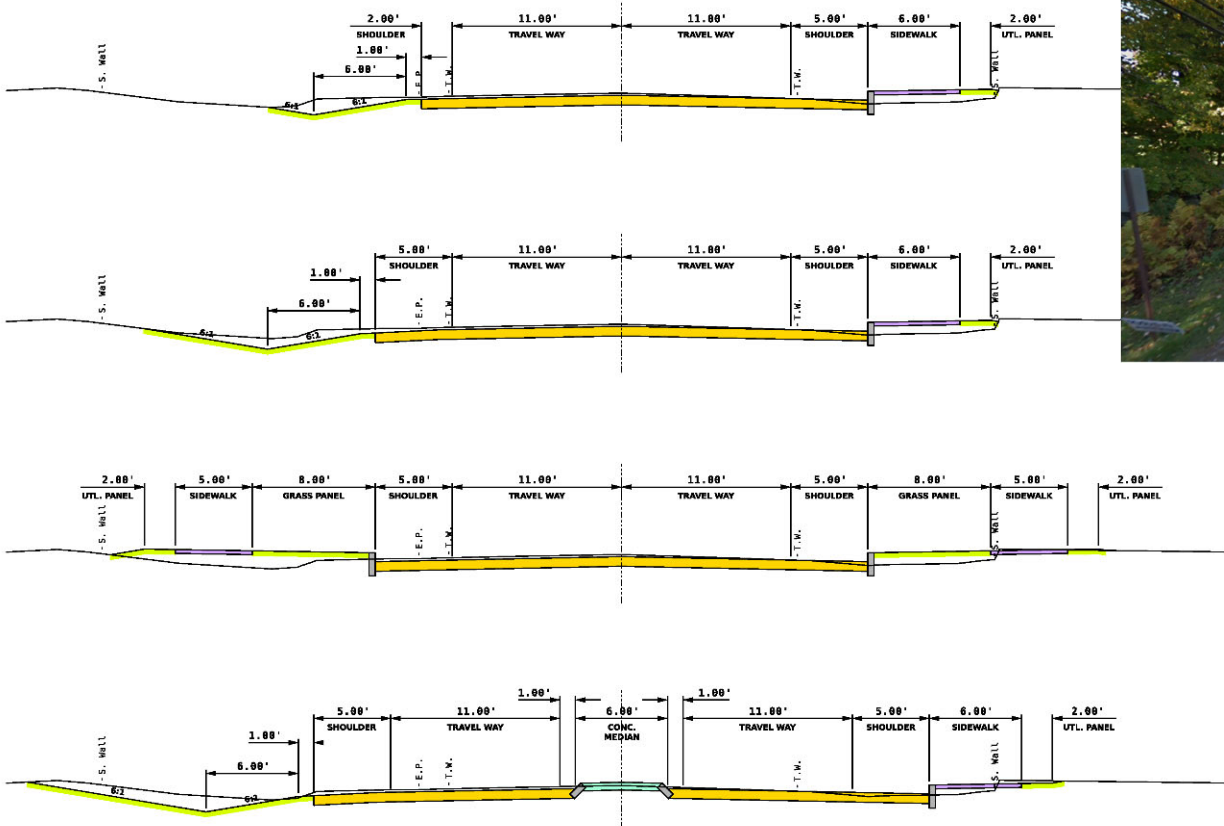


Abutter Conversation

Golf Course Crossing

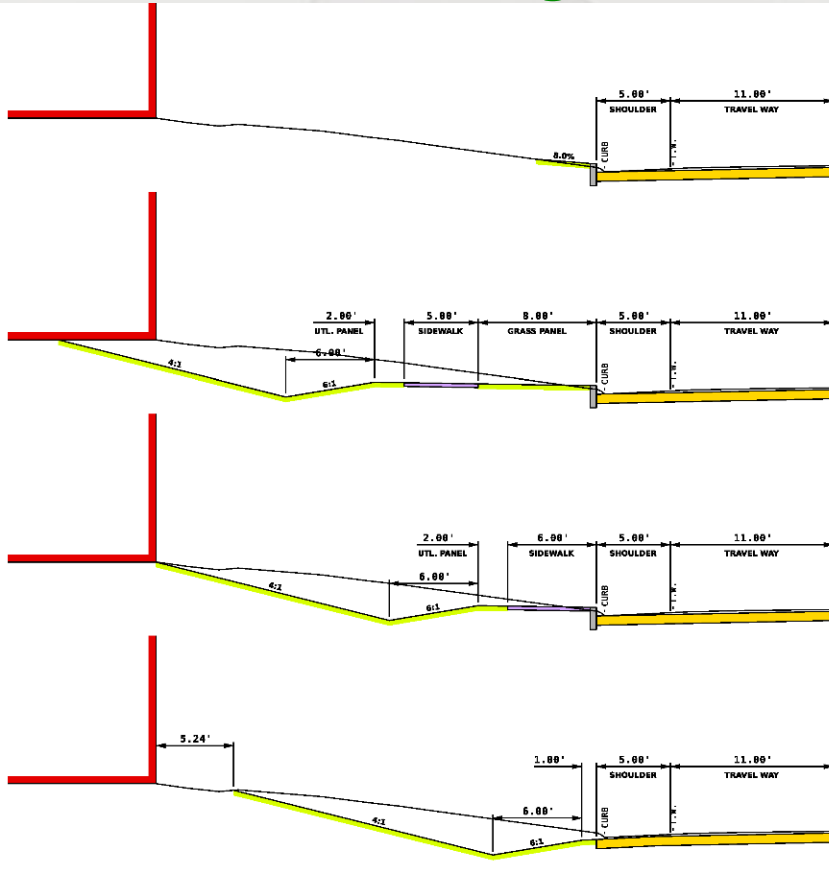
- Existing crossing signs obscured
- Improve visibility
- More public players than from club (unfamiliar with crossing)
- Speed study will be done post construction
- Rear end accidents, driver distraction
- Club to meet with abutter
- Perpendicular crossing

Zone 2 Typical Sections



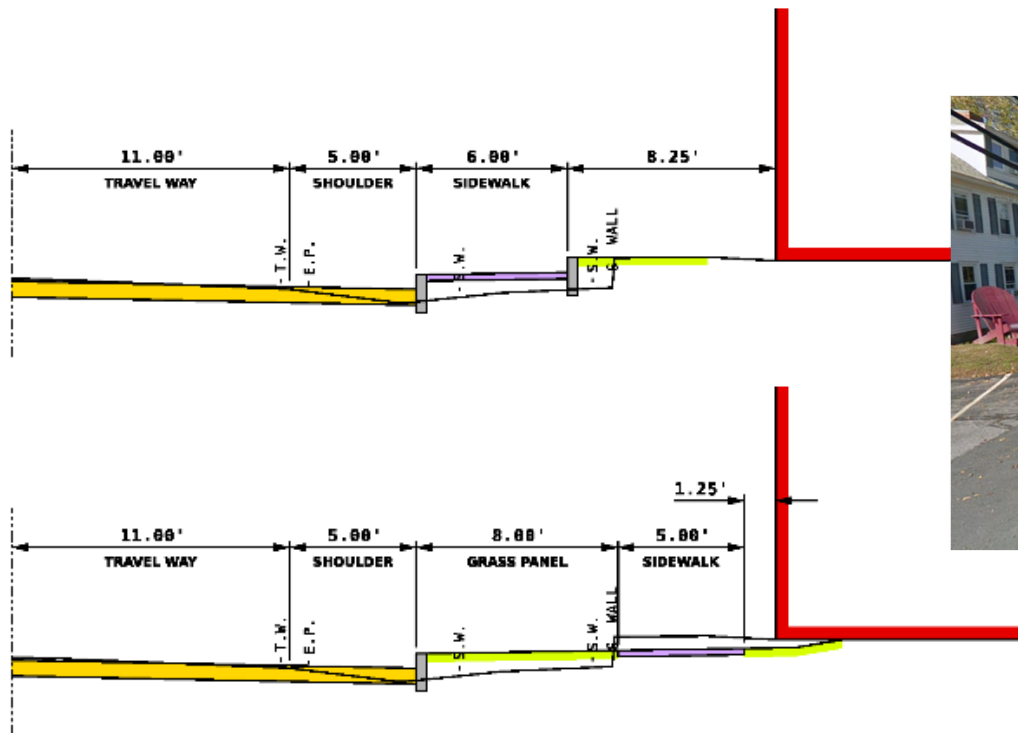
Kingswood Golf Course

Zone 2 Typical Sections



Windrifter Resort

Zone 2 Typical Sections

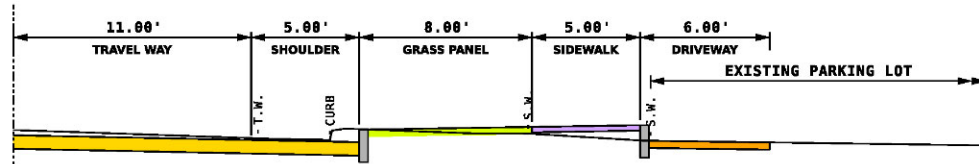
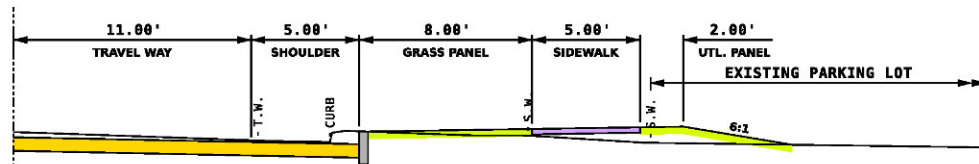
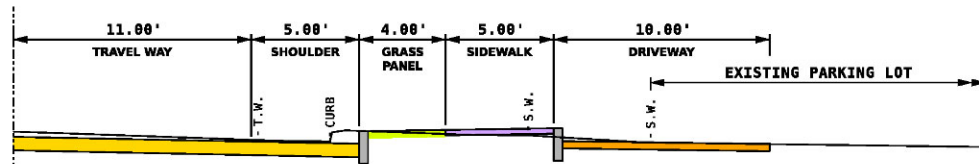


340 Main Street

Zone 3 – Old Mill Road to Christian Ridge Road



Zone 3 Typical Sections



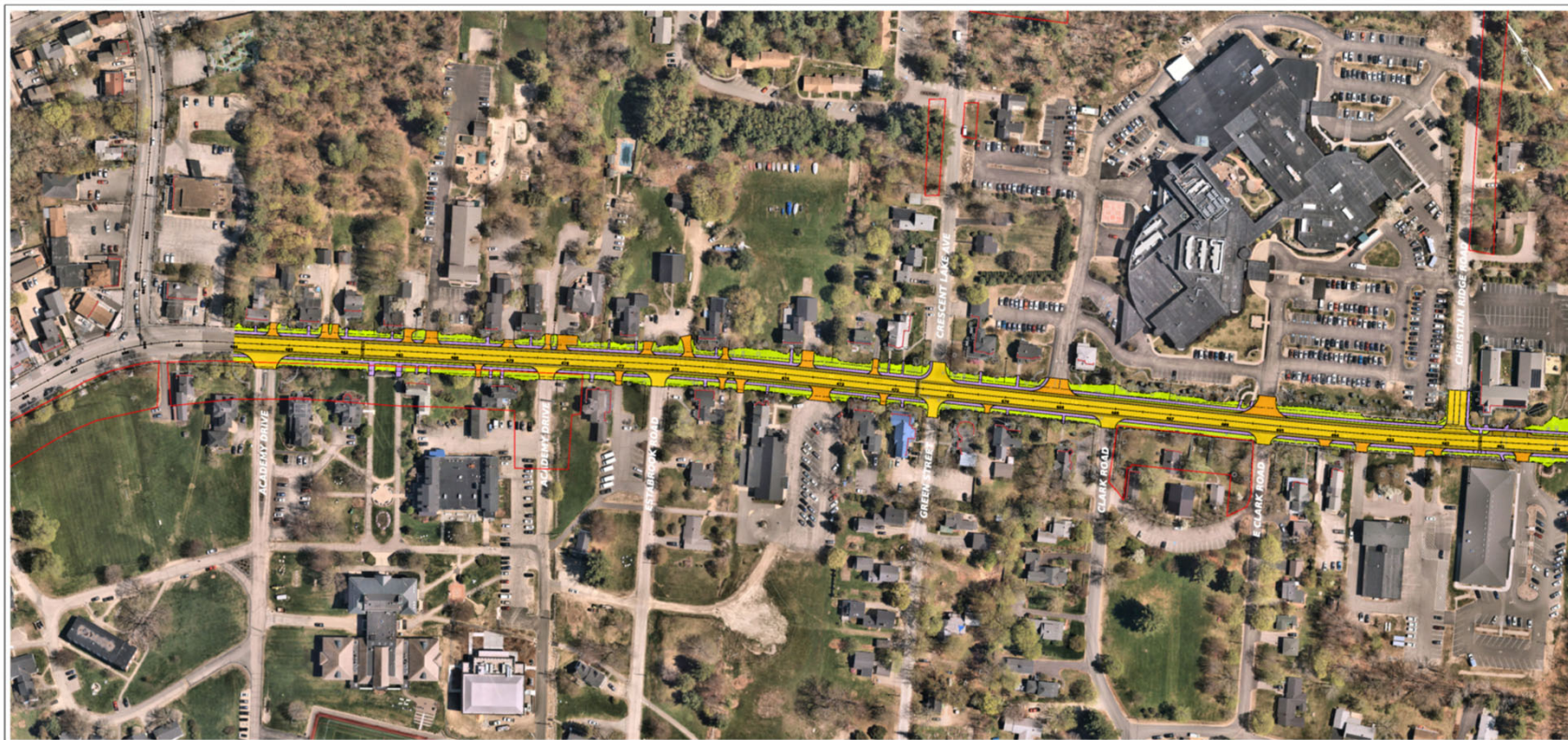
Morrissey's Porch and Pub

Zone 3 Typical Sections



Church

Zone 4 – Christian Ridge Road to Pickering Corner

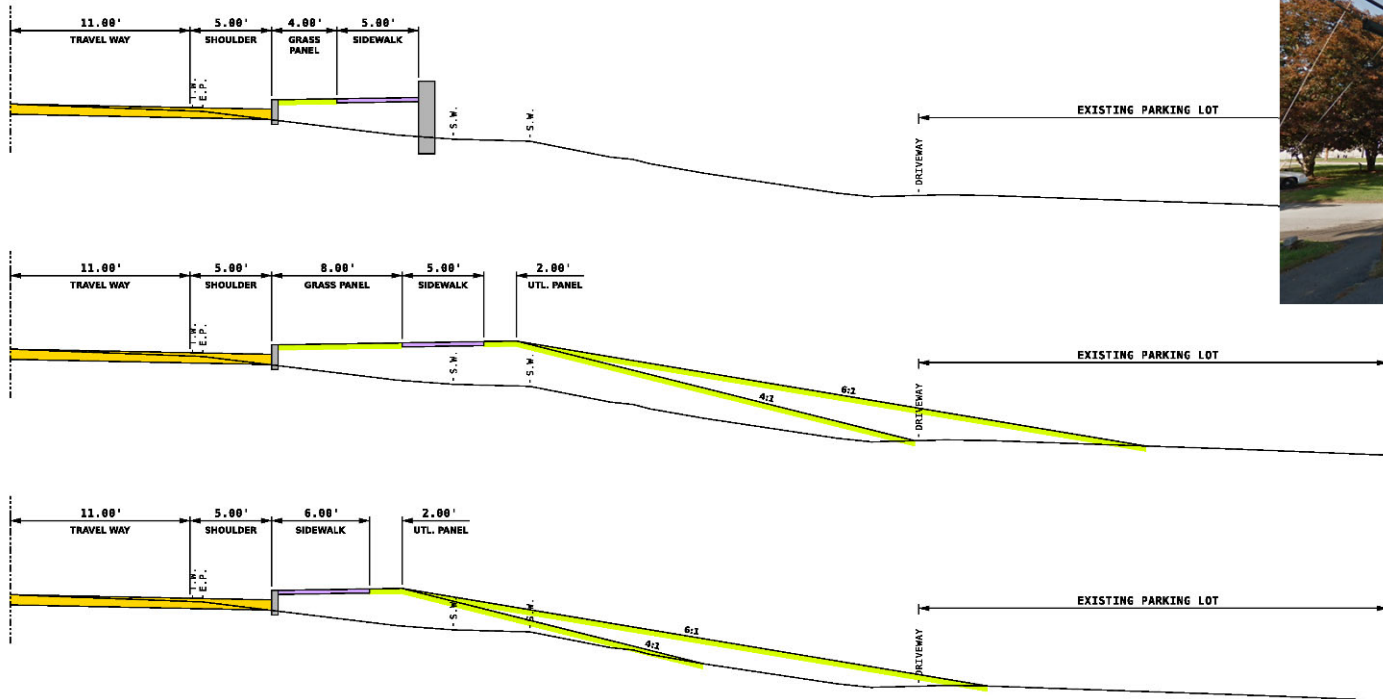


Abutter Conversation

Brewster Academy

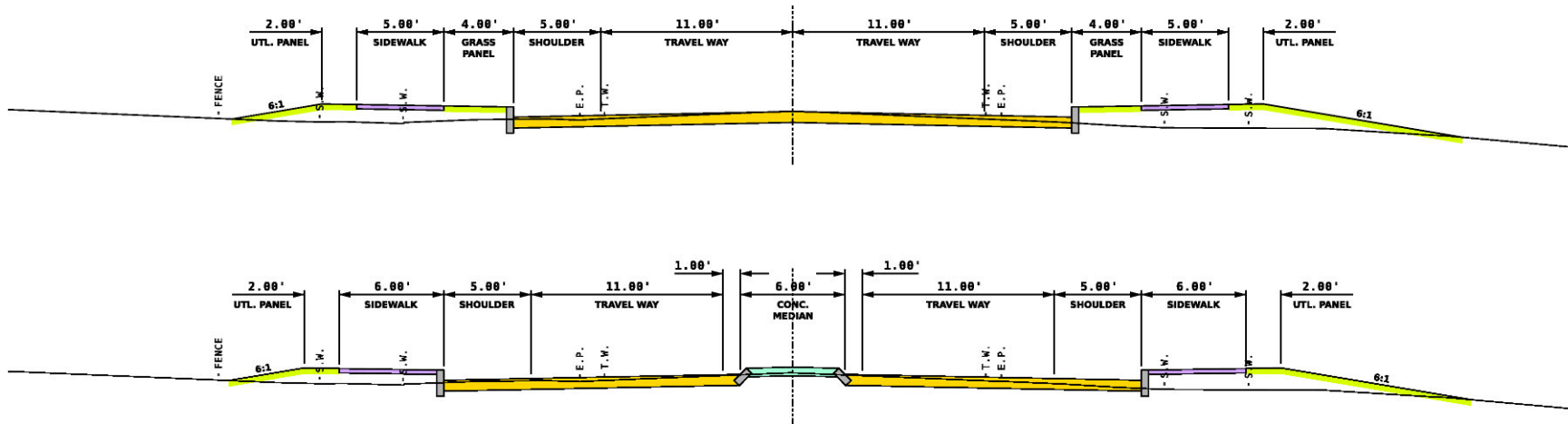
- Looking at relocating driveway from Main Street
- Creating an image in campus area
 - Flags
 - Landscaping features
- Street lighting
- Pedestrian traffic
- Statues on a Town easement, amenable to relocation

Zone 4 Typical Sections



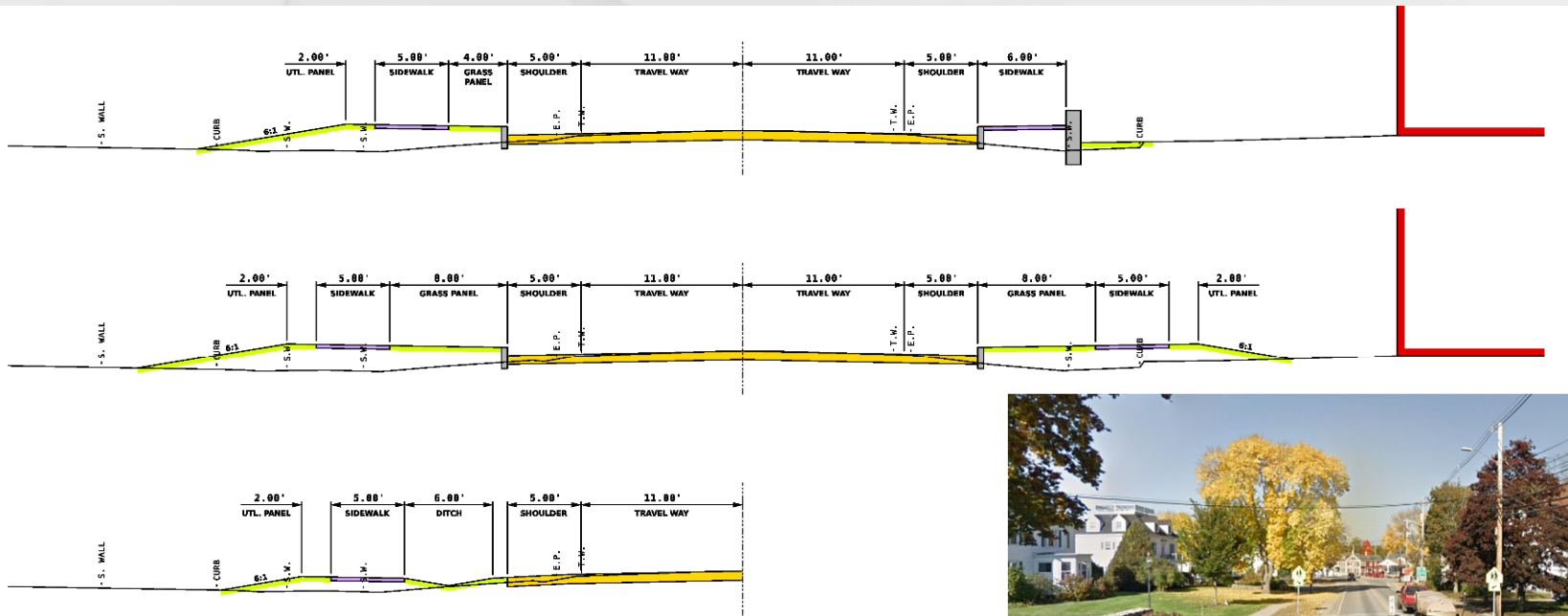
Huggins Frontage

Zone 4 Typical Sections



Clark House Museum

Zone 4 Typical Sections



Brewster Academy



176 Main Street

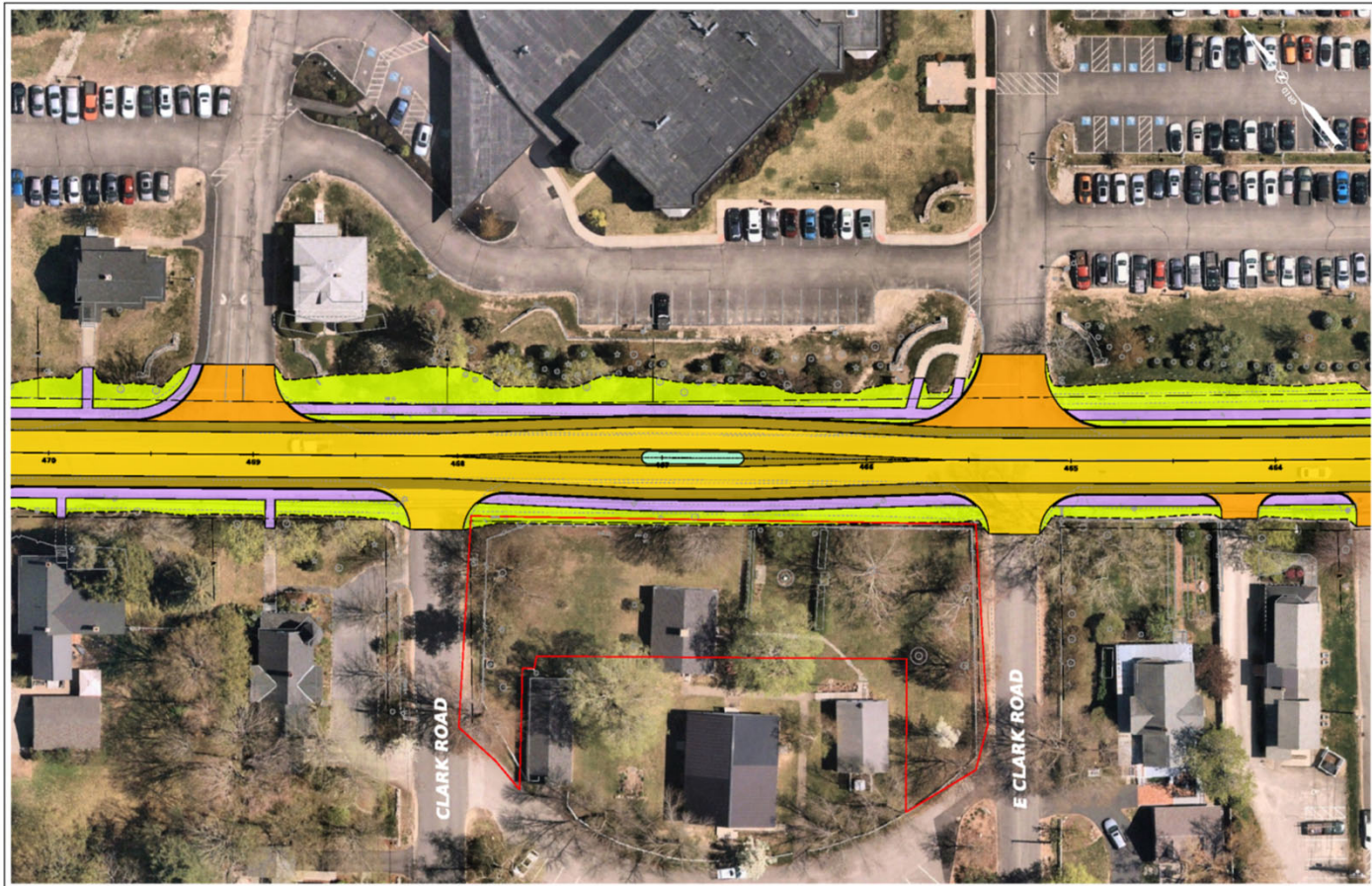
Corridor Traffic Calming



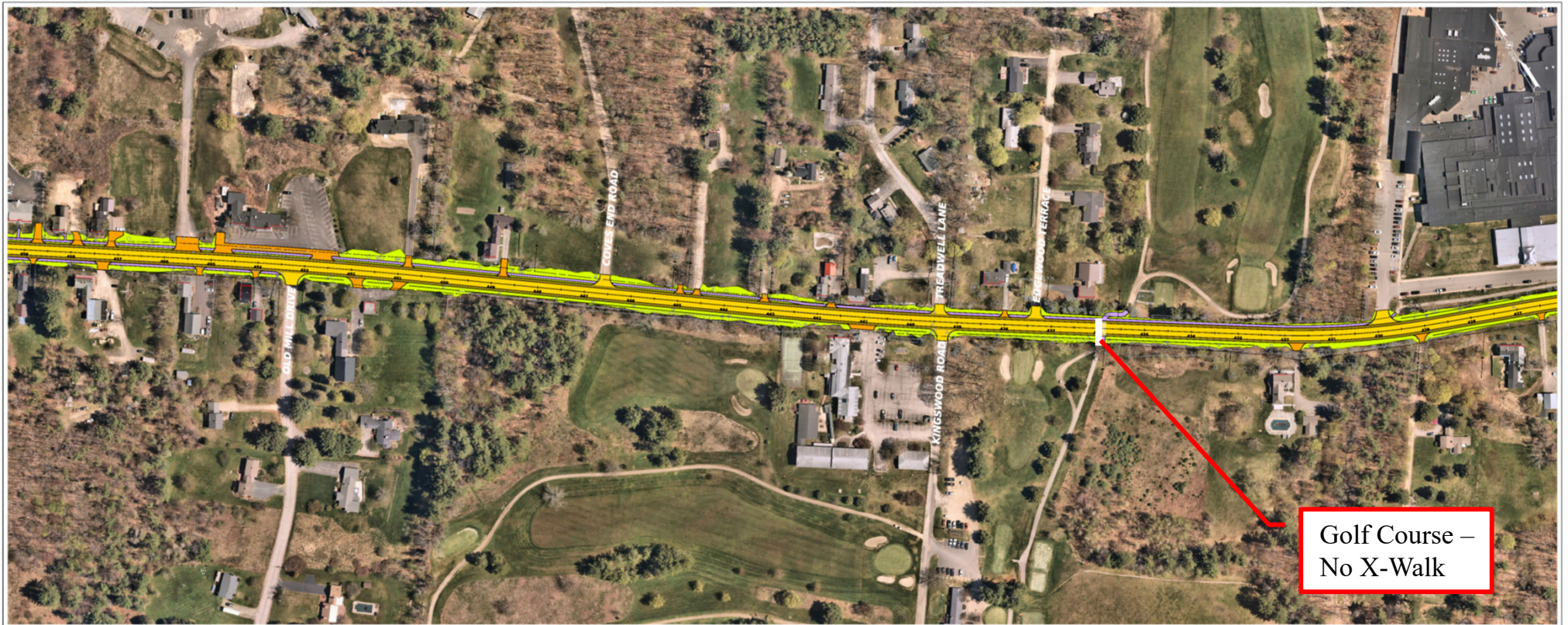
Corridor Traffic Calming



Corridor Traffic Calming

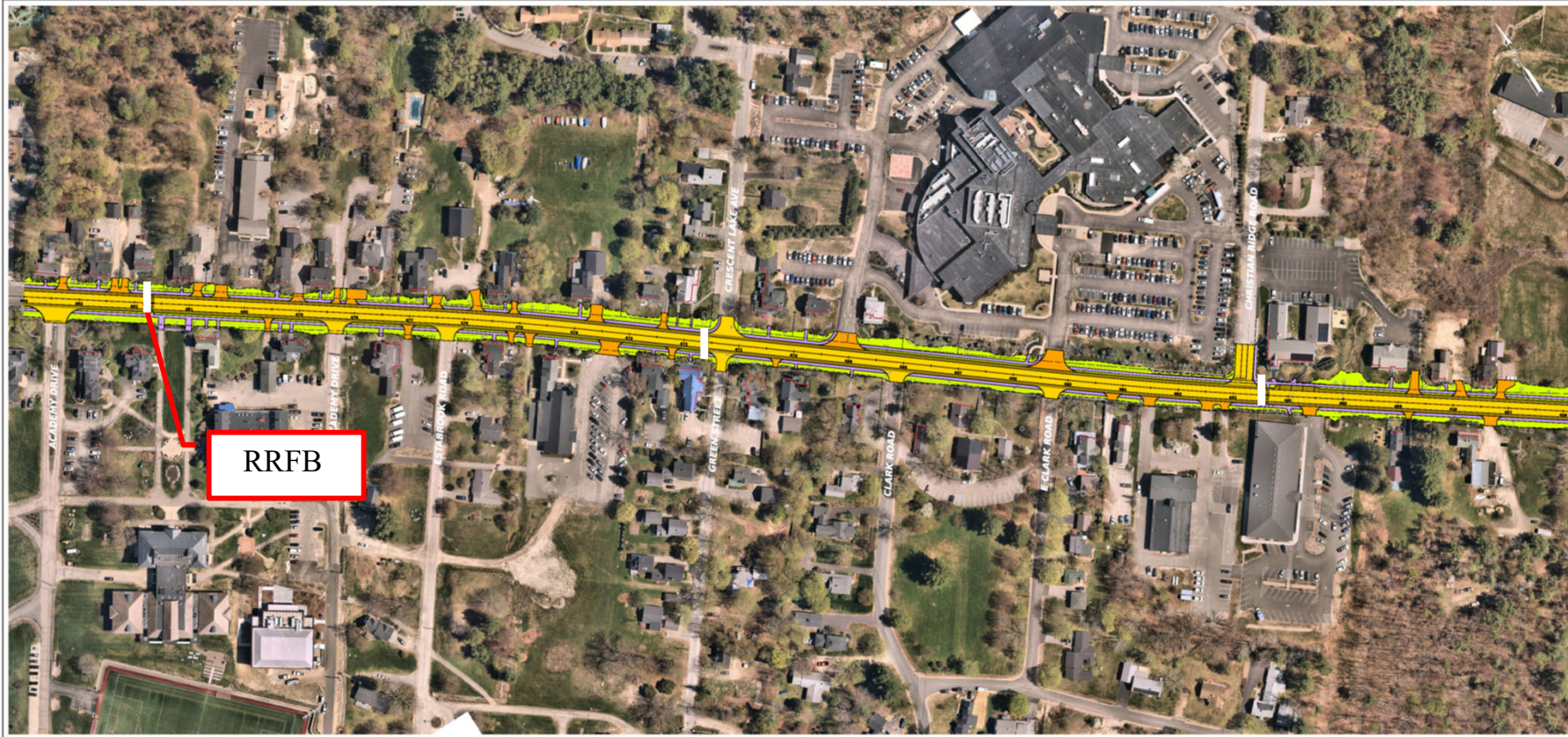


Corridor Pedestrian Crossings



Golf Course –
No X-Walk

Corridor Pedestrian Crossings

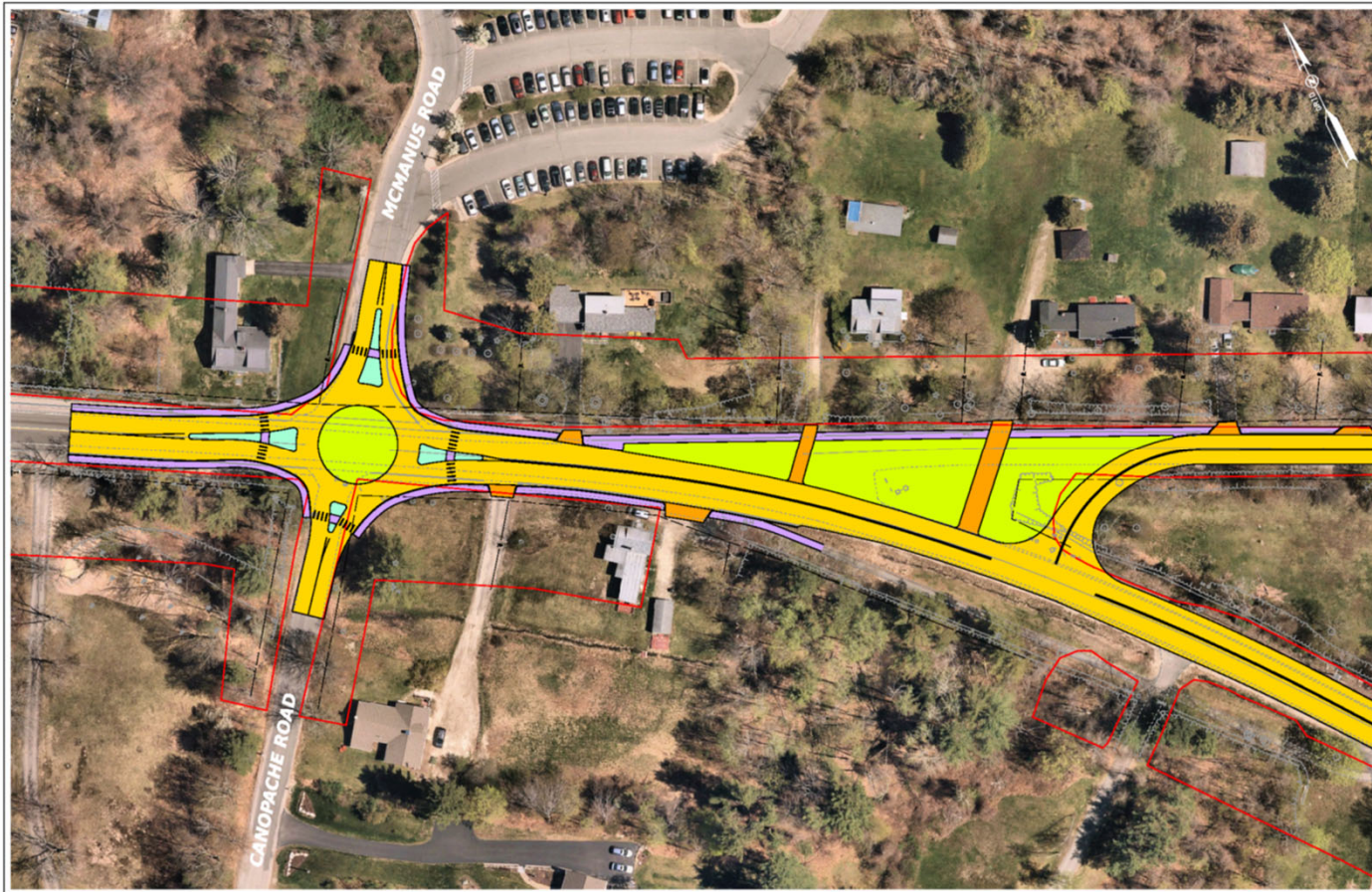


• Questions?

Location: NH 28/109 Center Street Looking North

Alternative Considerations

Pleasant Valley Road/McManus Road

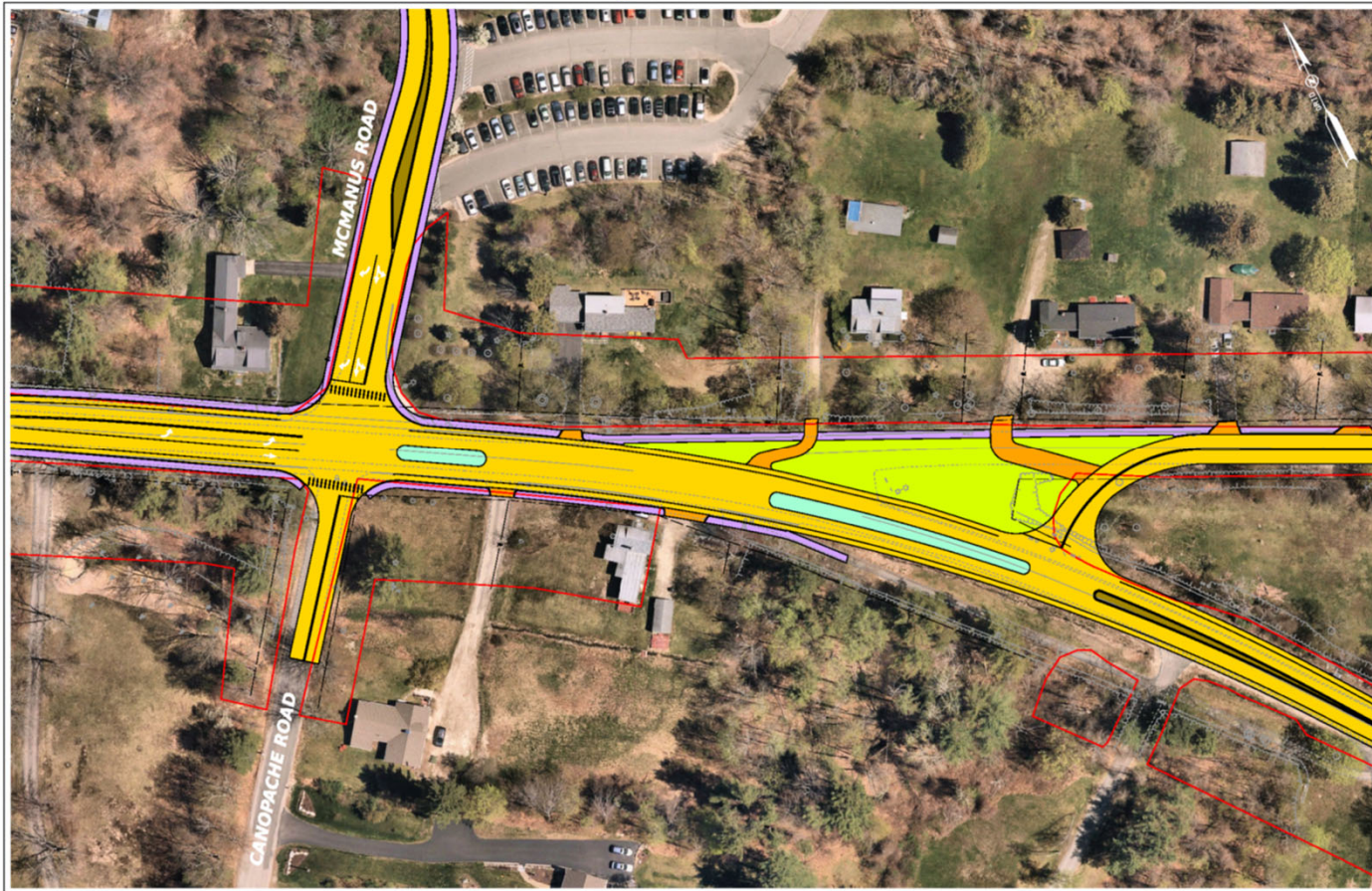


Discussion:

- T-Intersection w/
Roundabout
- Minimize
Pleasant Valley
changes
- Traffic calming
at roundabout

Alternative Considerations

Pleasant Valley Road/McManus Road



Discussion:

- Landscaped island to provide traffic calming/gateway
- Left turn pocket / island
- Drives with raised island

• Questions?

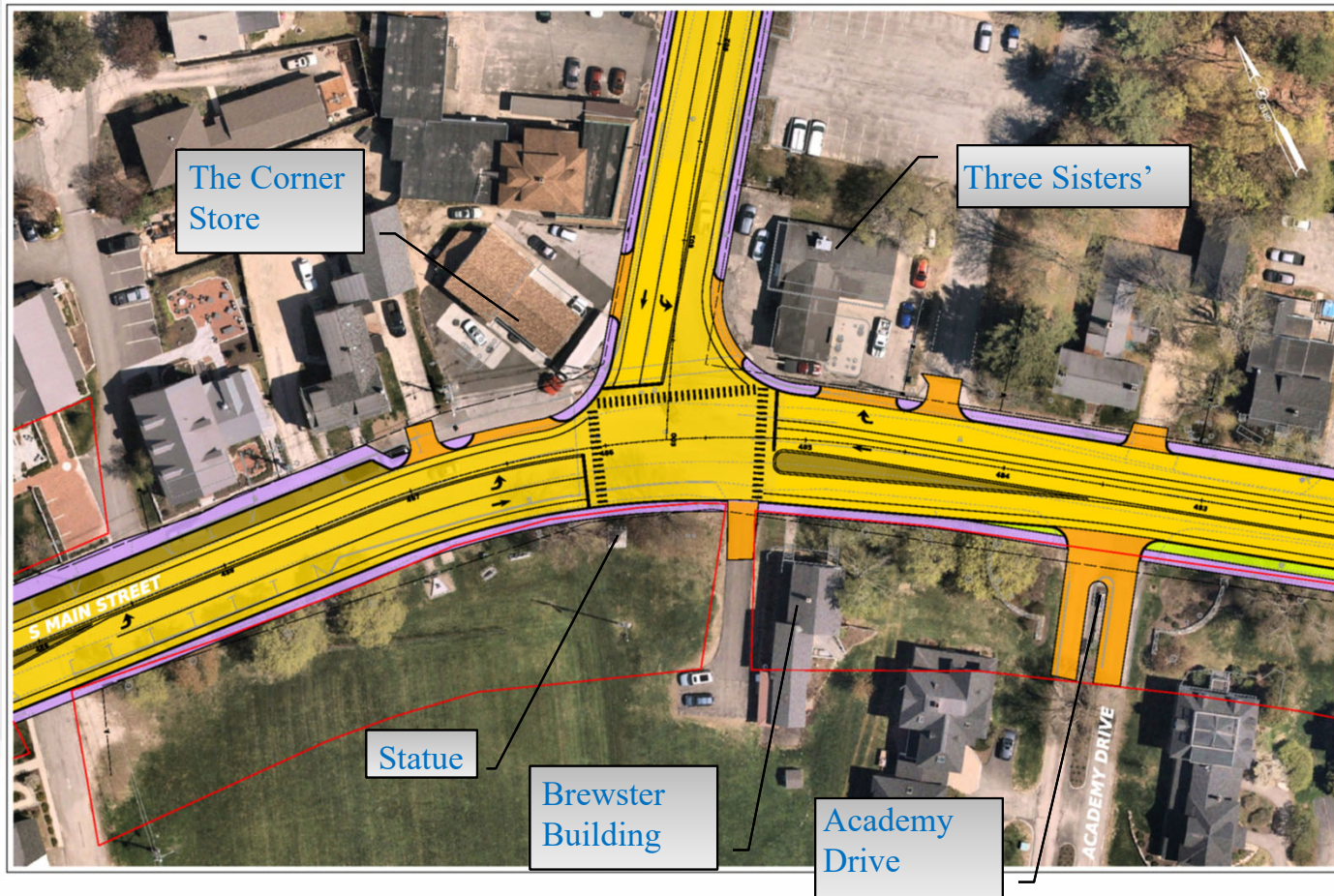
Location: NH 28/109 Center Street Looking North

Abutter Conversation

Pickering Corner

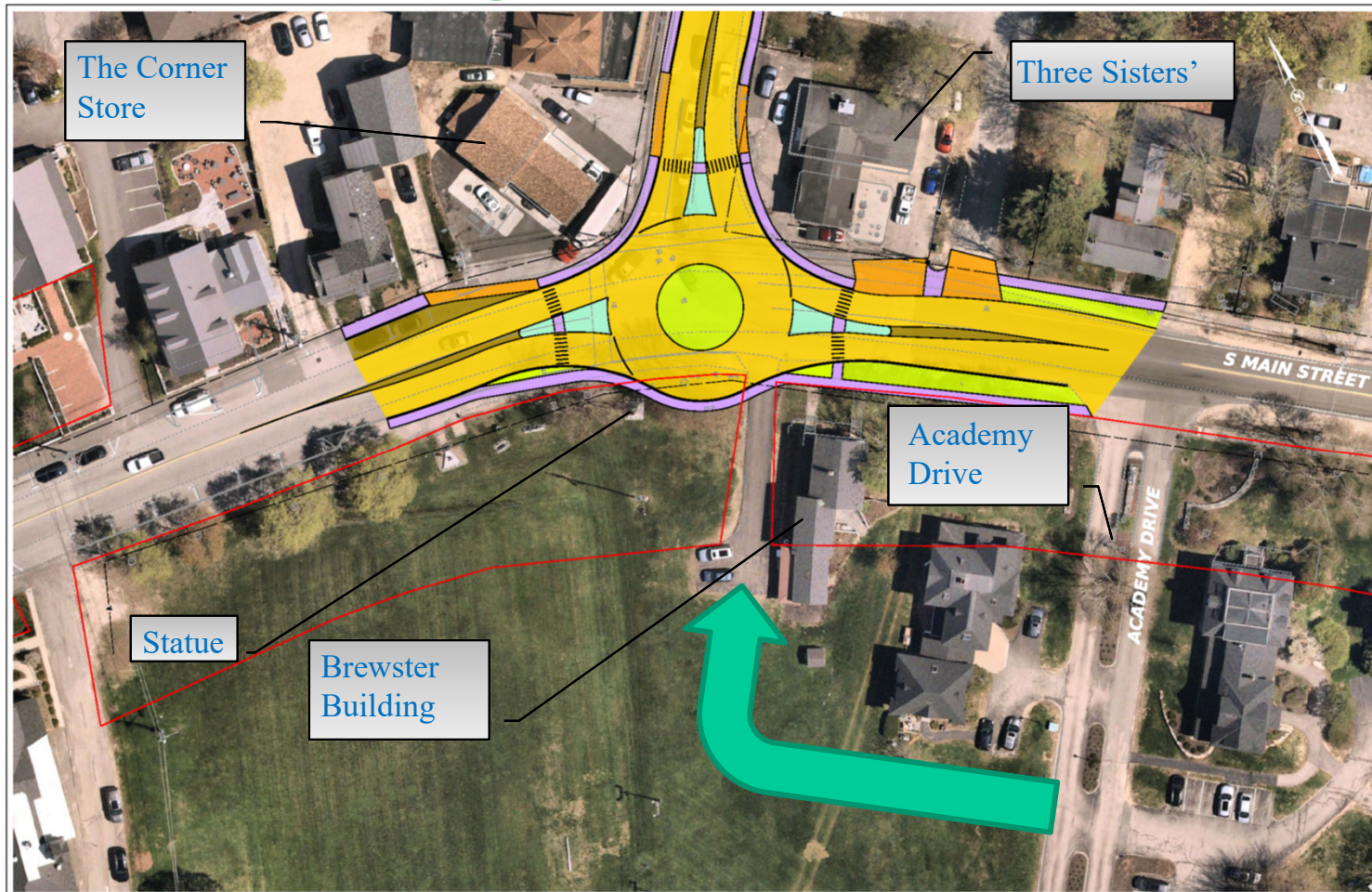
- Gas Station Access and Circulation
 - Deliveries
 - Parking
 - On-site circulation
- Brewster Academy Driveway Relocation
 - Eliminate drive at intersection
- Statue Impacts
 - Relocate – shift roundabout to west

Pickering Corner



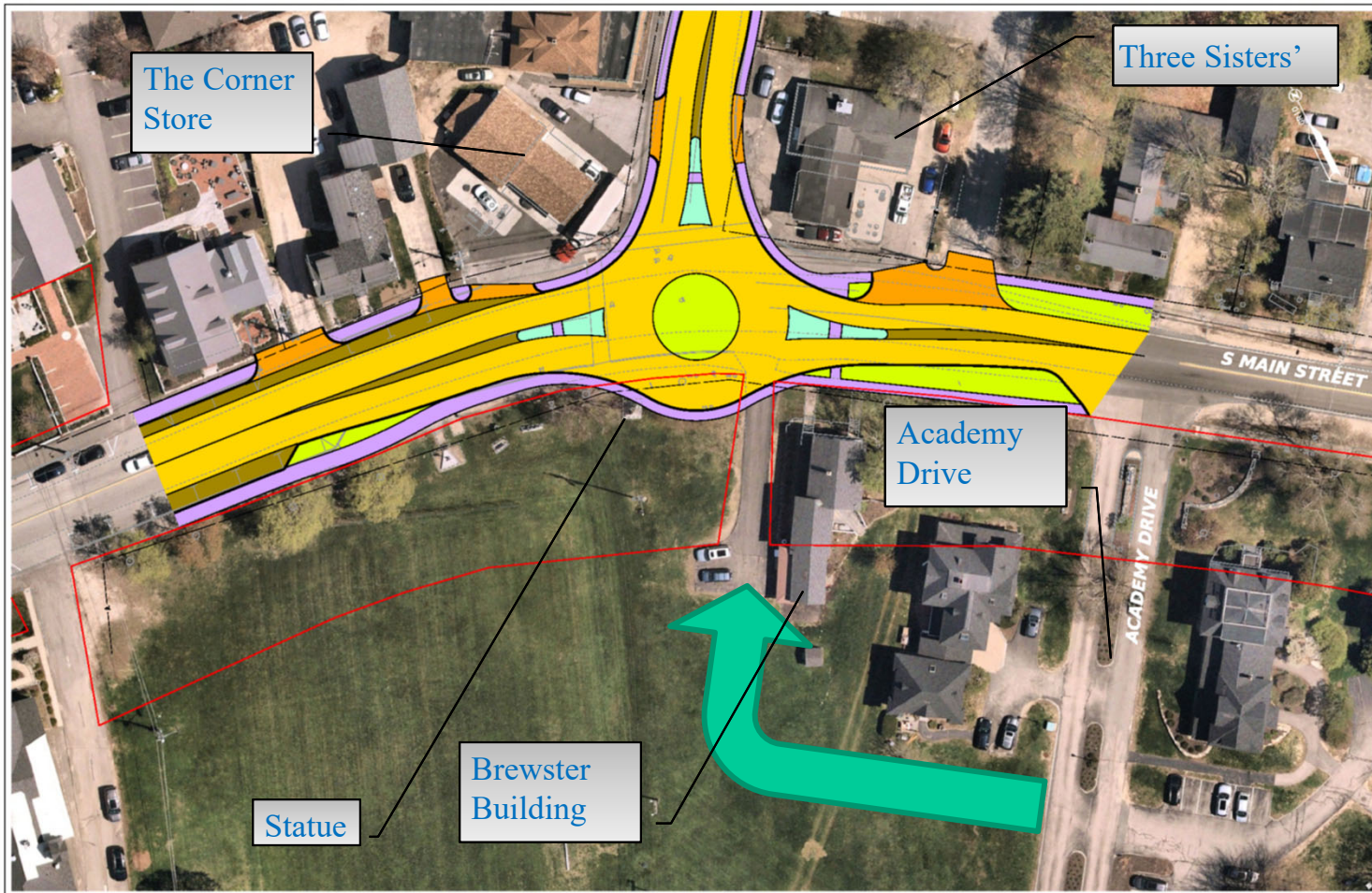
- Maintain existing curb lines and drives
- For southbound, exclusive lanes, or restore parking

Pickering Corner



- Maintain statue
- Review curb openings
- Brewster drive relocation
- Proposed sidewalks at or in front of existing

Pickering Corner



- Relocate statue
- Review curb openings
- Brewster drive relocation
- Corner sidewalks in front of existing
- Widen sidewalks

• Questions?

Location: NH 28/109 Center Street Looking North

Stormwater Management

- NHDOT/NHDES agreement on stormwater treatment.
- Several potential BMP locations identified by the Town
- Manage flows to existing systems

Stormwater Management



Schedule and Next Steps

	PUBLIC INVOLVEMENT	PROJECT DEVELOPMENT
2022	Project Advisory Committee Meetings Public Informational Meetings Neighborhood Stakeholder Meeting	Evaluate Environmental Impacts (wetlands, water quality, etc.) Present and Receive Feedback on Design Alternatives
2023	Public Informational Meeting Public Hearing (Summer)	Publish Environmental Study Non-participating Funding
2024-2026	PAC & Public Official Meetings (Project Updates, As Needed)	Final Design Right-of-Way Acquisitions / Easements Environmental Permitting
2026		Anticipated Start of Construction

Contact Information

Jason Ayotte, PE,
NHDOT Project Manager
603-271-3921
–Jason.M.Ayotte@dot.nh.gov

• Questions?

Location: NH 28/109 Center Street Looking North

