

Hampton 40797
Ocean Boulevard (NH Route 1A)

**Project Advisory Committee
Meeting #5**

Thursday, November 17, 2022

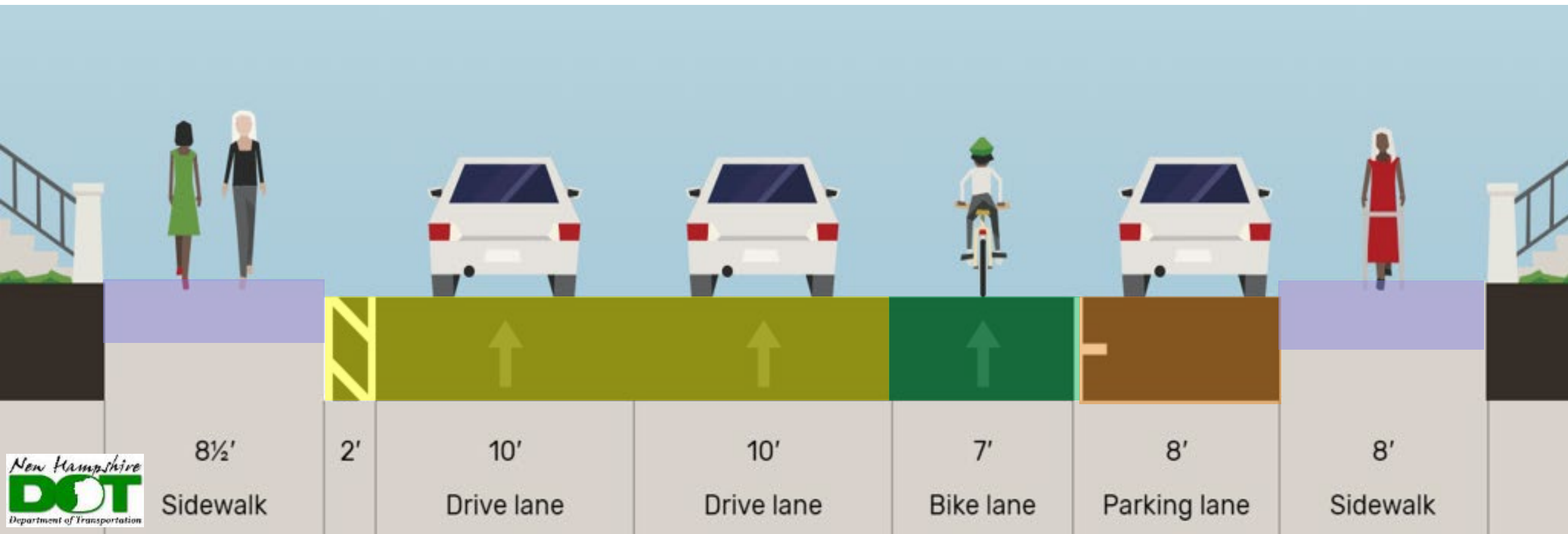
Agenda

1. Welcome / Introductions
2. October 25, 2022 PAC Meeting Review
3. Today's Meeting Goals
4. Intersection Options
5. Next Steps



October 2022 PAC Meeting Review

- Presented Revised Corridor Options



Goals of Today's Meeting

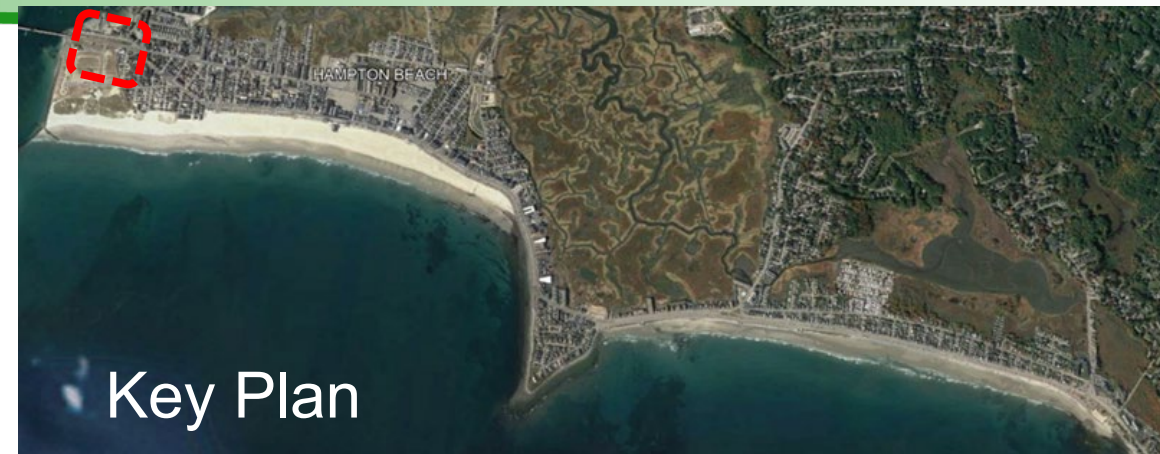
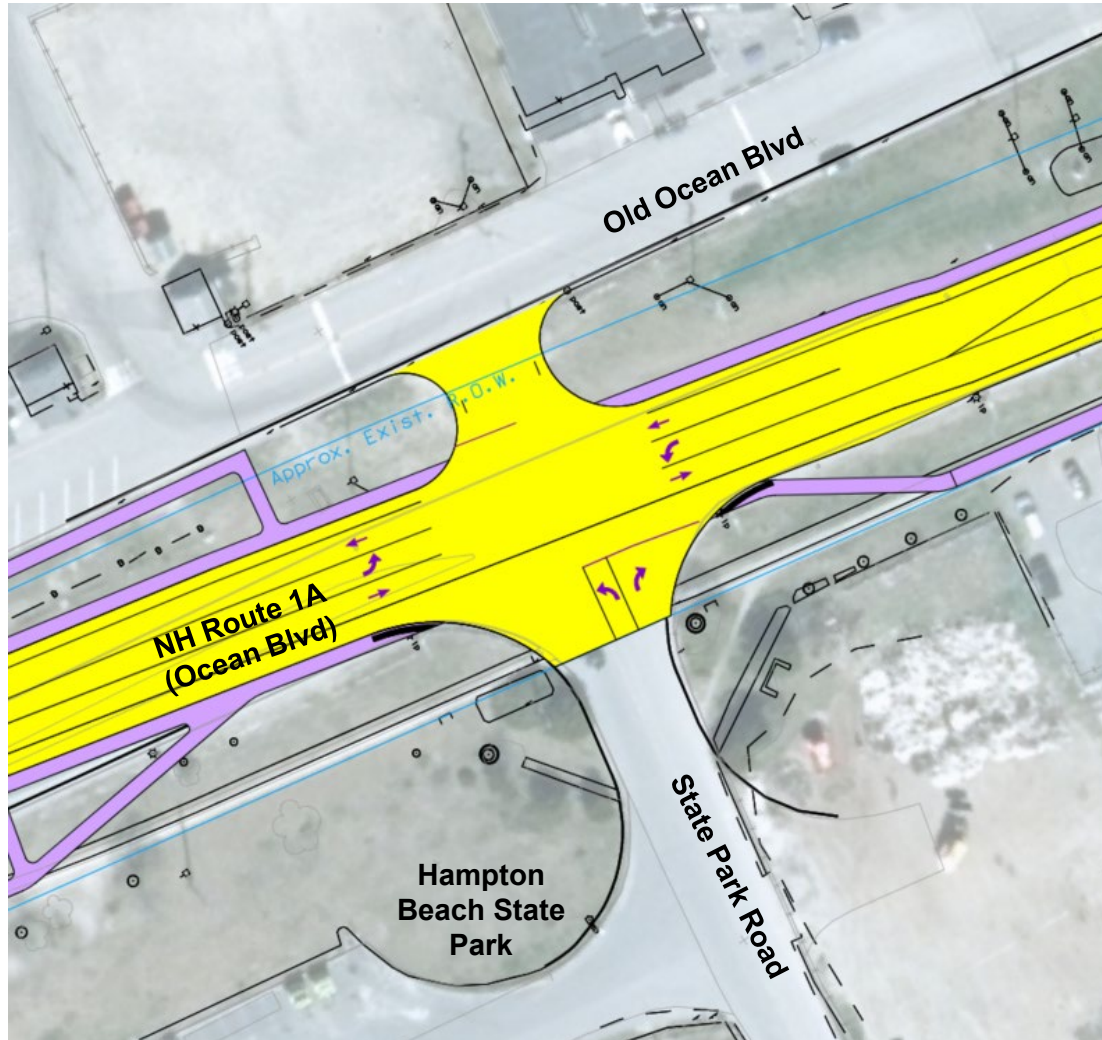
- Present and receive input on intersection options
- With input from PAC, select intersection options for further study
- Review Revised Corridor Option – I Street to Ashworth

Intersection Options



Intersection Options

*State Park Rd (Option A1): Unsignalized
(Ashworth Ave U-Turn Maintained)*



Key Plan

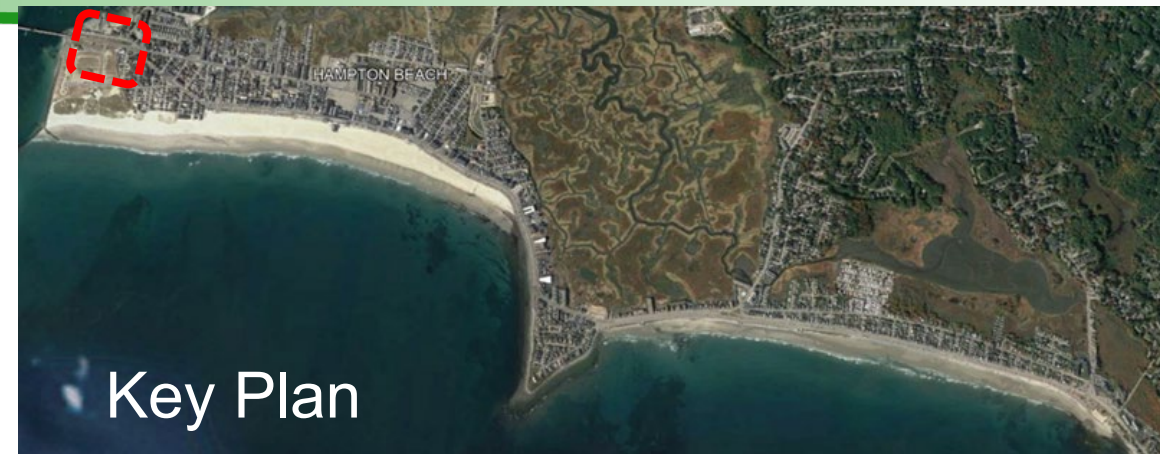
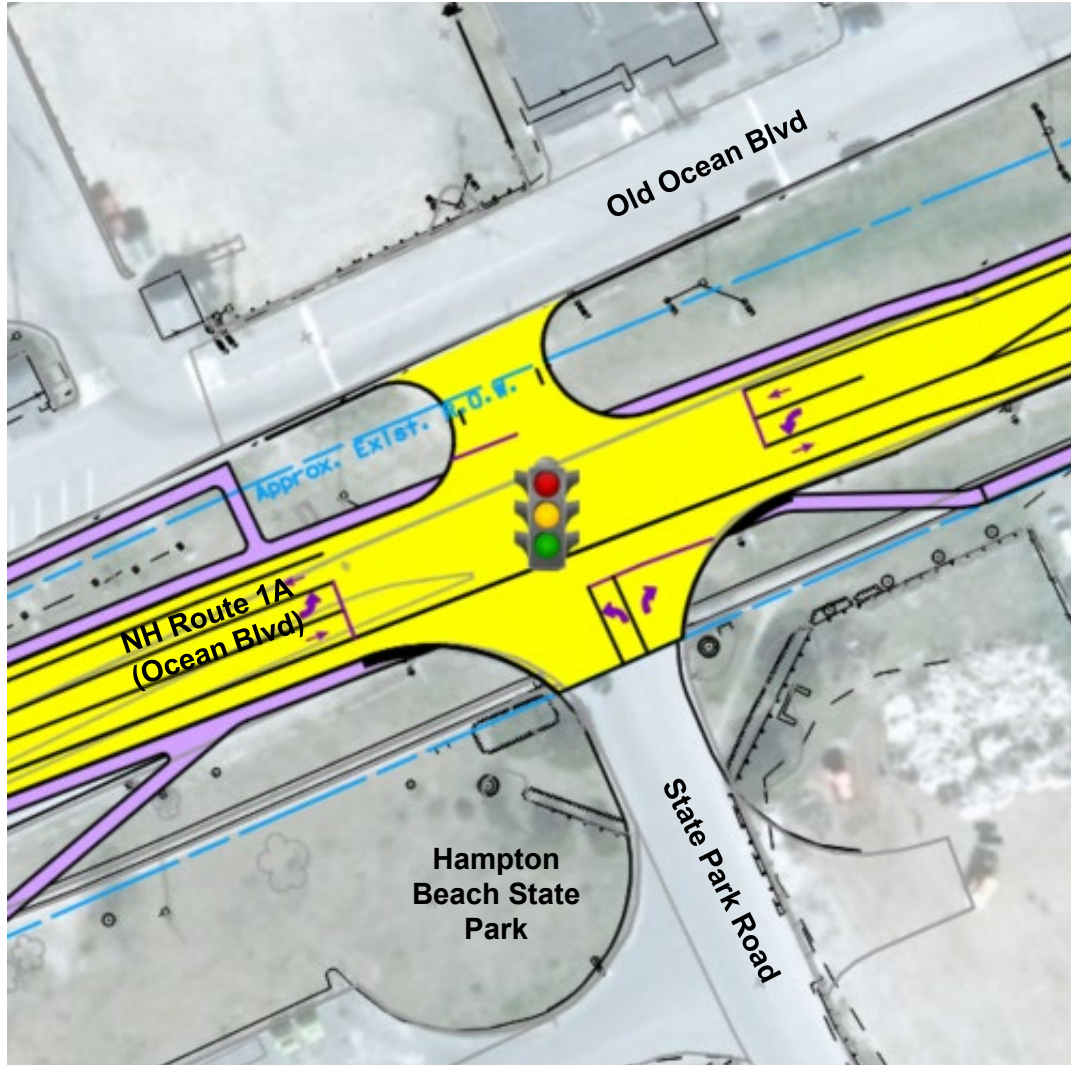
	Synchro Analysis	
	Intersection Delay	Intersection Level-of-Service (LOS)
Weekend MD	256.8	F
Weekend PM	322.1	F

Advantages	Disadvantages
Reduced congestion at Ashworth Ave / Ocean Blvd intersection by removing Harbor Rd intersection	Additional traffic on Old Ocean Blvd
Removes left turn conflicts from Ocean Blvd SB to Epping Ave and Ocean Blvd NB to Harbor Rd	Additional vehicle and pedestrian conflicts (under current bridge design project) due to proposed 4th leg

*Recommendation: Operational improvements not consistent with project goals – **Option not recommended for further study.***

Intersection Options

*State Park Rd (Option A2): Signalized
(Ashworth Ave U-Turn Maintained)*



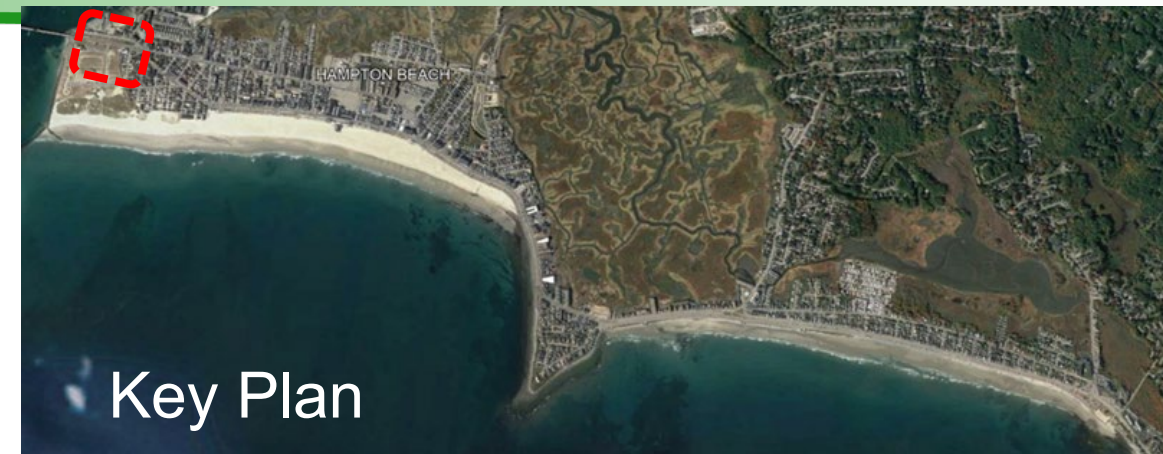
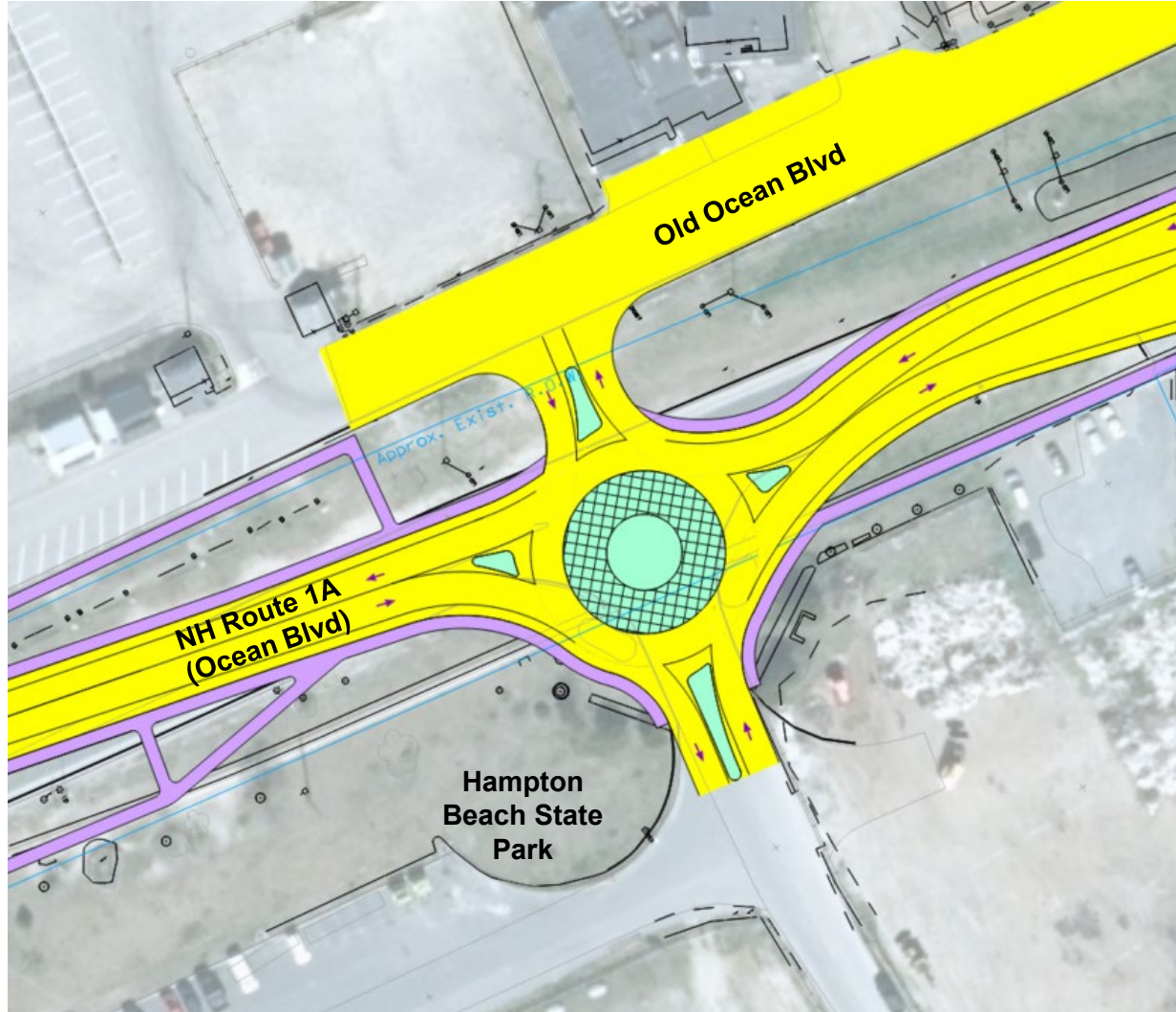
	Synchro Analysis	
	Intersection Delay	Intersection LOS
Weekend MD	9.9	A
Weekend PM	11.3	B

Advantages	Disadvantages
Reduced congestion at Ashworth Ave / Ocean Blvd intersection by removing Harbor Rd intersection	Additional traffic on Old Ocean Blvd
	Additional Operations and Maintenance Costs (signals)

Recommendation: Signal not warranted under average monthly traffic flow. Option recommended for further study.

Intersection Options

**State Park Rd (Option A3): One Lane Roundabout
(Ashworth Ave U-turn Maintained)**



Key Plan

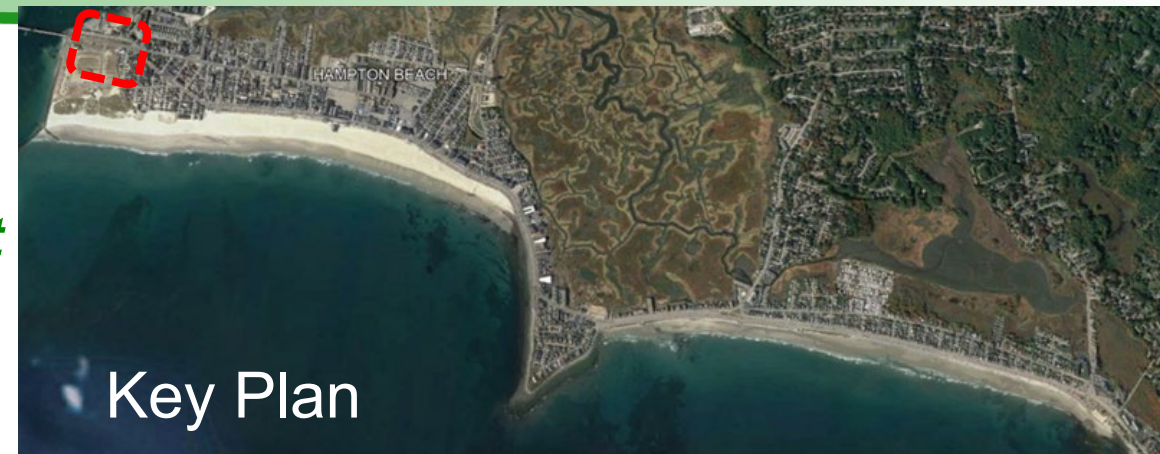
	SIDRA Analysis	
	Intersection Delay	Intersection LOS
Weekend MD	11.0	B
Weekend PM	10.7	B

Advantages	Disadvantages
Reduced congestion at Ashworth Ave / Ocean Blvd intersection by removing Harbor Rd intersection	Additional traffic on Old Ocean Blvd
Removes left turn conflicts from Ocean Blvd SB to Epping Ave, Ocean Blvd NB to Harbor Rd and at this intersection	Potential impact to Section 6(f) property

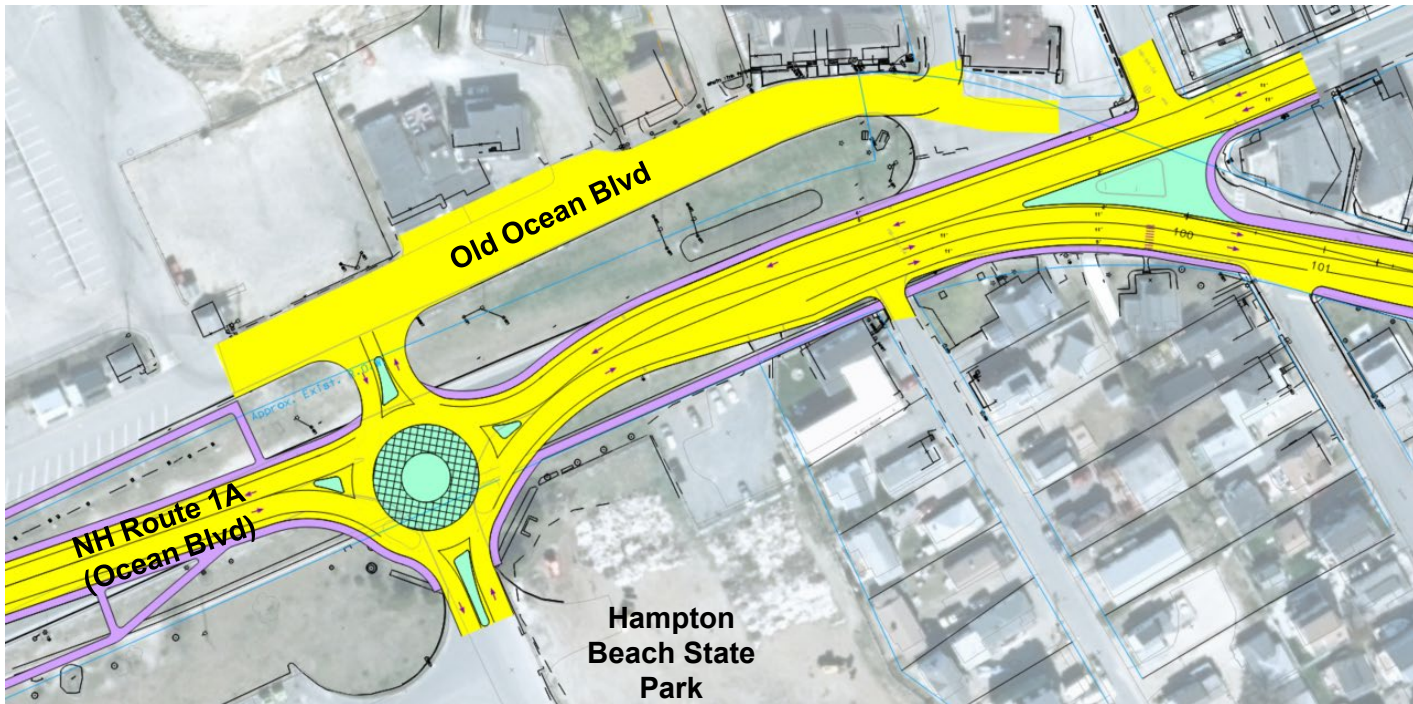
Recommendation: Option recommended for further study.

Intersection Options

*State Park Rd (Option A4): One Lane Roundabout
(Ashworth Ave U-turn Not Maintained)*



Key Plan



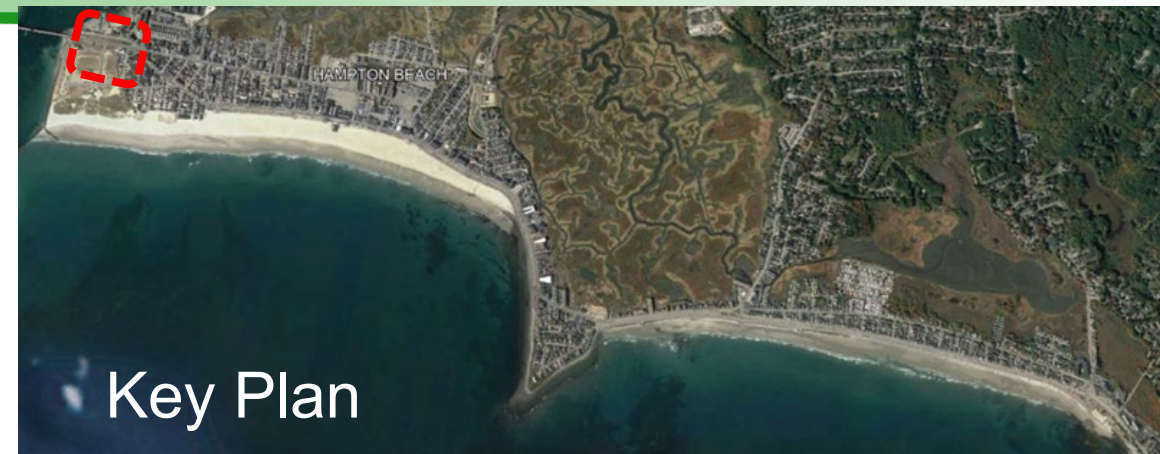
	SIDRA Analysis	
	Intersection Delay	Intersection LOS
Weekend MD	100.5	F
Weekend PM	93.7	F

Advantages	Disadvantages
Reduced congestion at Ashworth Ave / Ocean Blvd intersection by removing Harbor Rd intersection	Additional traffic on Old Ocean Blvd
Removes left turn conflicts from Ocean Blvd SB to Epping Ave, Ocean Blvd NB to Harbor Rd and this intersection	Congestion at roundabout / Poor operational performance (LOS F)
	Potential impact to Section 6(f) property

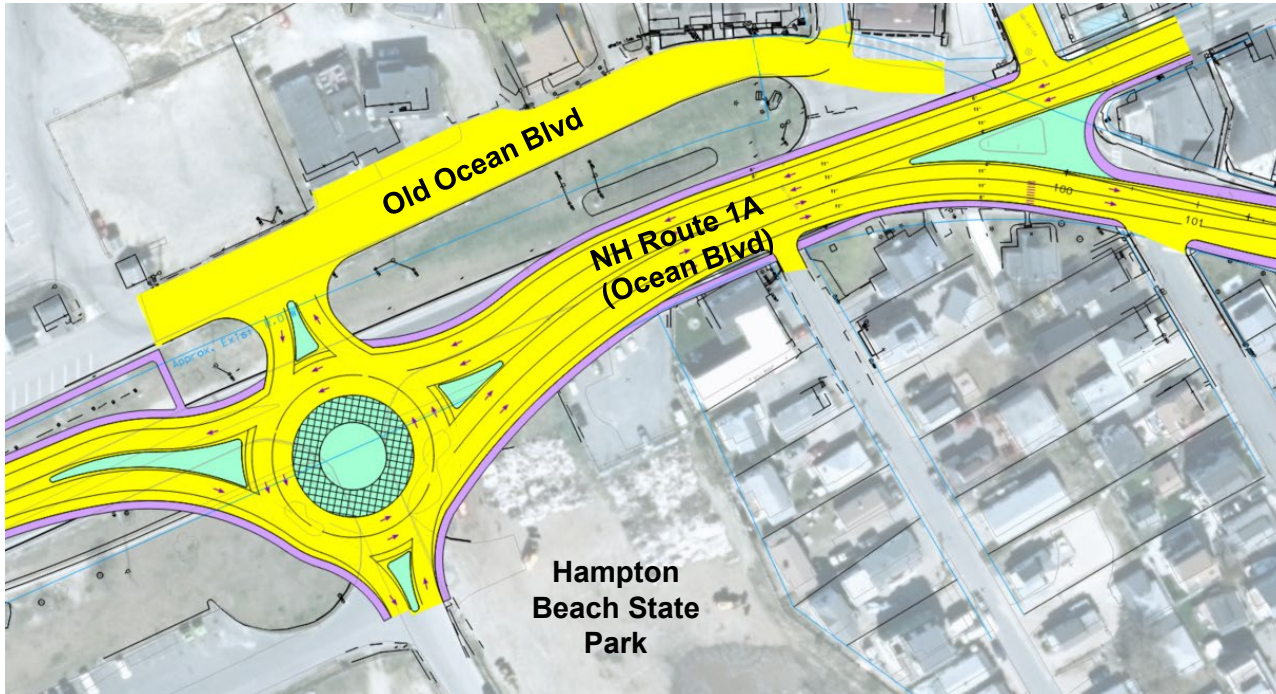
Recommendation: Operational improvements not consistent with project goals - option not recommended for further study.

Intersection Options

**State Park Rd (Option A5): Two Lane Roundabout
(Ashworth Ave U-turn Not Maintained)**



Key Plan



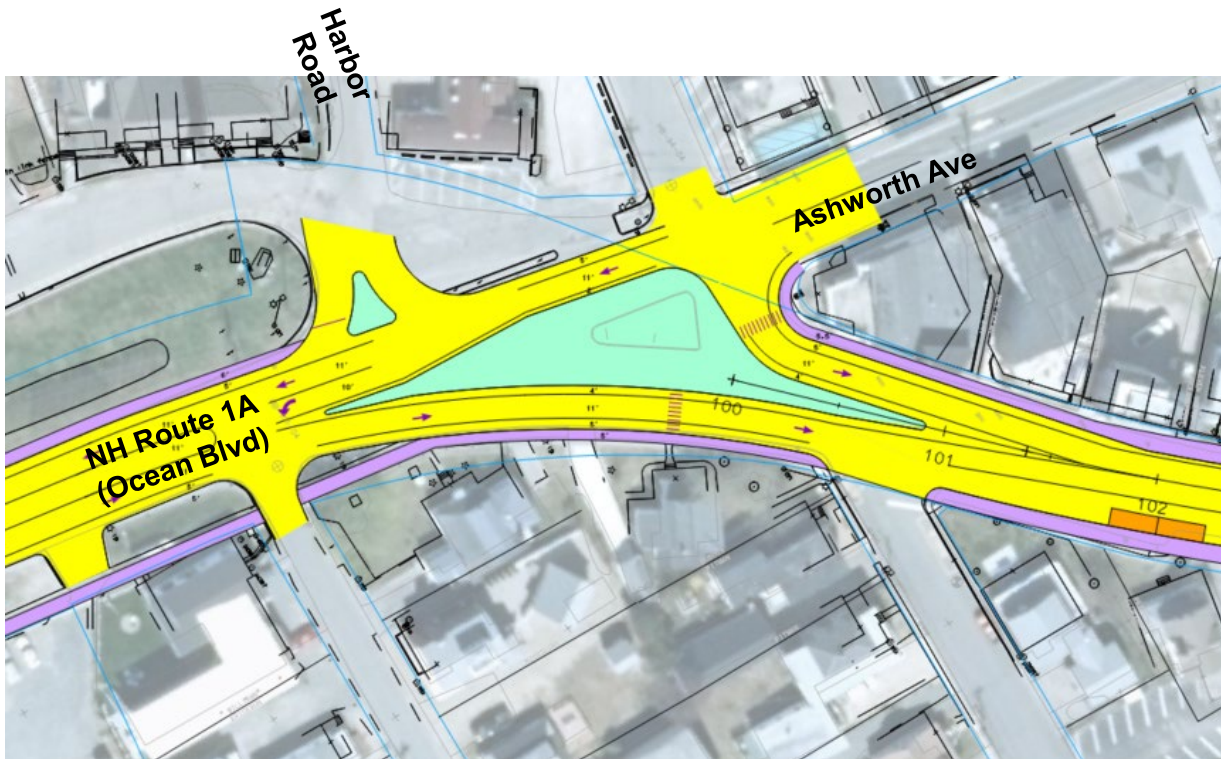
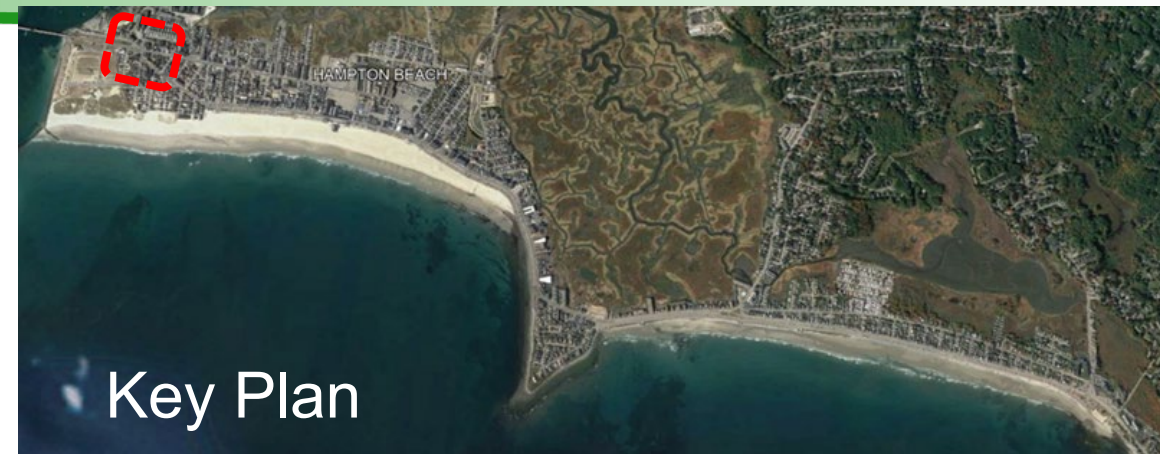
	SIDRA (Two Lane Roundabout – Close Ashworth U-Turn)	
	Intersection Delay	Intersection LOS
Weekend MD	15.7	C
Weekend PM	16.1	C

Advantages	Disadvantages
Reduced congestion at Ashworth Ave / Ocean Blvd intersection by removing Harbor Rd intersection	Additional traffic on Old Ocean Blvd
Removes left turn conflicts from Ocean Blvd SB to Epping Ave and Ocean Blvd NB to Harbor Rd	Potential impact to Section 6(f) property

Recommendation: Option not recommended for further study due to potential 6(f) property impacts.

Intersection Options

**Ashworth Ave / Ocean Blvd (Option B1):
Maintain U-turn
(Requires 4th leg connection at State Park Road)**



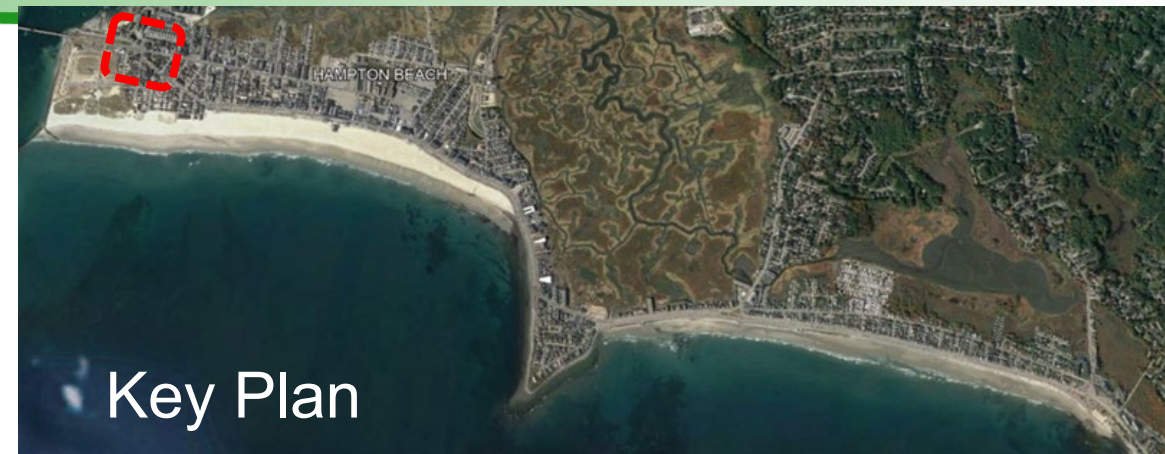
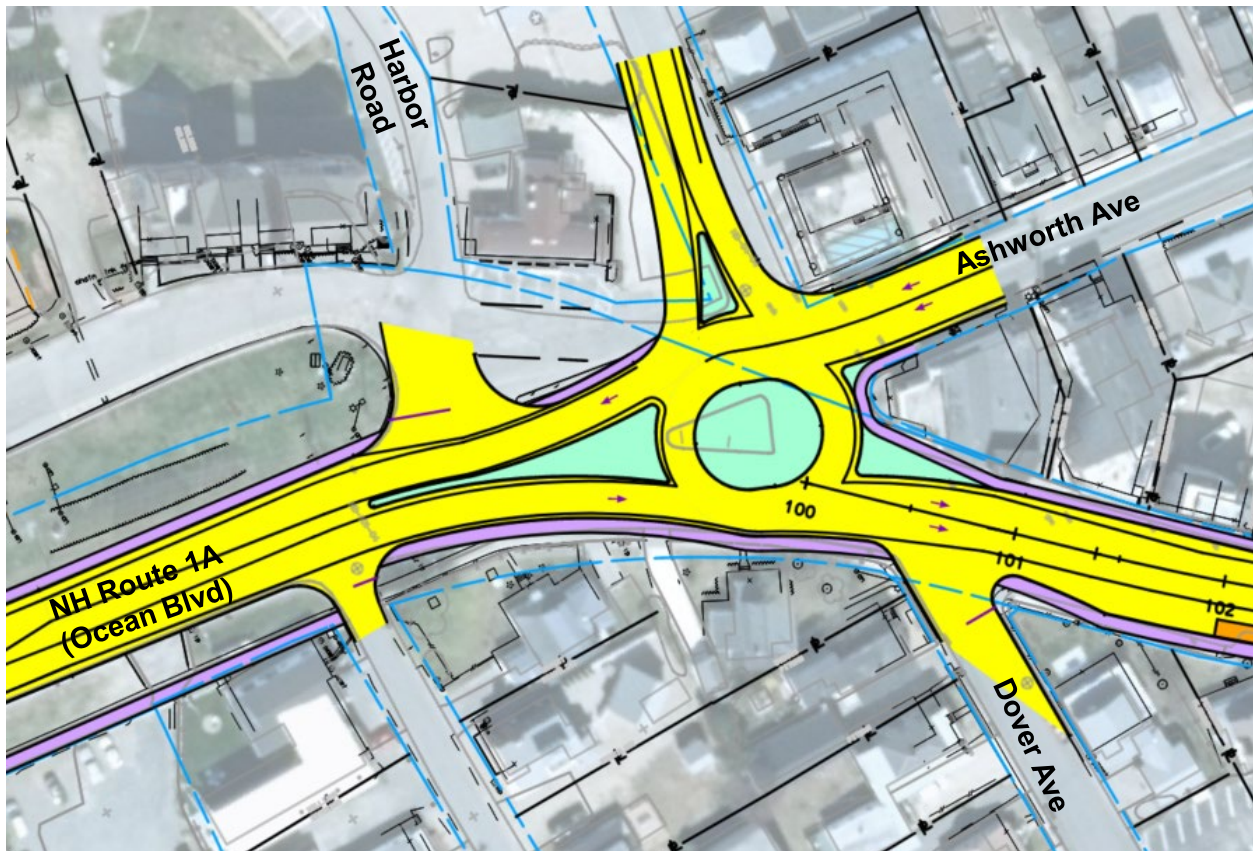
		Synchro Analysis	
		Intersection Delay	Intersection LOS
Duston Ave	Weekend MD	16.2	C
	Weekend PM	33.5	D
Dover Ave	Weekend MD	19.2	C
	Weekend PM	25.5	D

Advantages	Disadvantages
Remove crossover conflict for Ashworth Ave right turns to Dover Ave	Eliminates left turns from and to Harbor Rd
Defined entrance to Wok restaurant	
Removes left turn conflicts for Epping Ave and Harbor Rd	
Ashworth U-Turn traffic stays separate from Ocean Blvd NB traffic	

Recommendation: This option optimizes the intersection for pedestrian and vehicle use. **Option recommended for further study.**

Intersection Options

*Ashworth Ave / Ocean Blvd (Option B2):
Roundabout with SB Bypass*



Key Plan

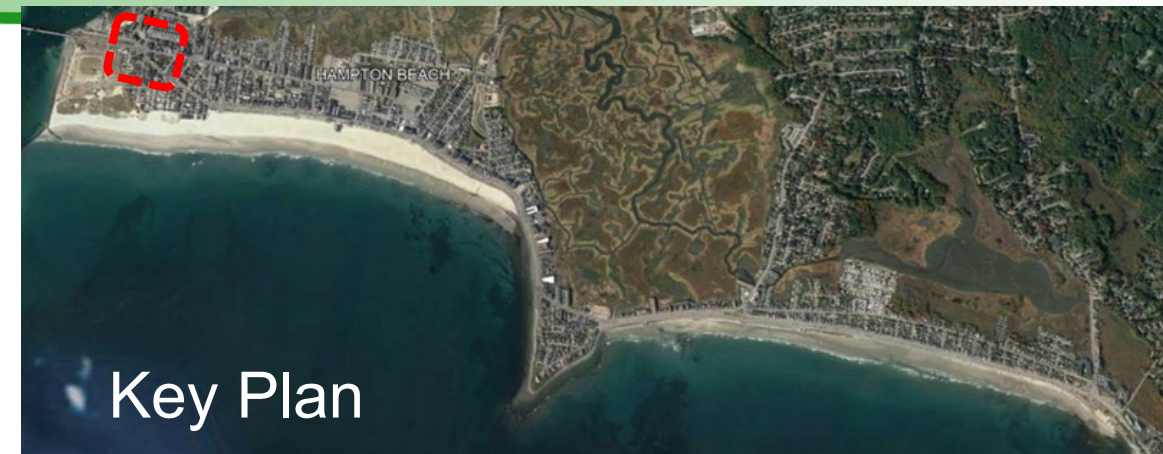
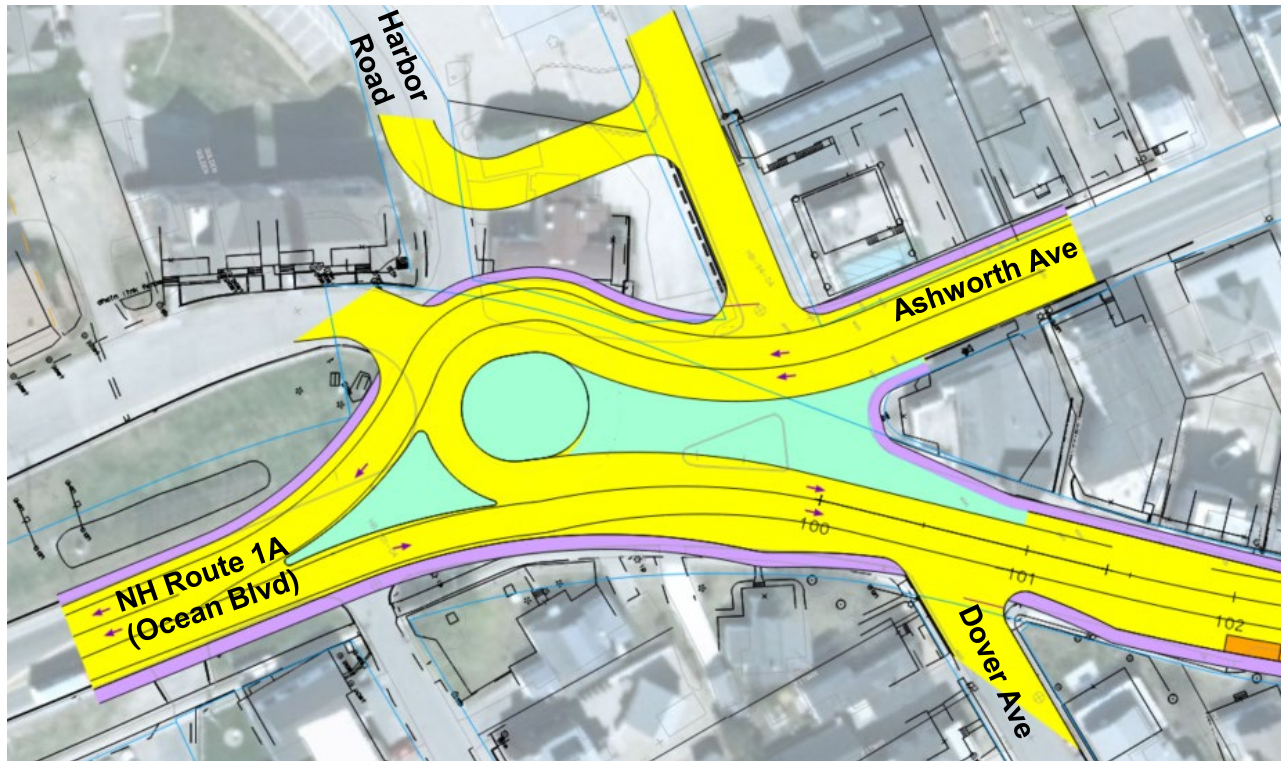
	SIDRA Analysis	
	Intersection Delay	Intersection LOS
Weekend MD	27.3	D
Weekend PM	87.6	F

Advantages	Disadvantages
	Ashworth U-Turn traffic must merge into one lane with Ocean Blvd NB traffic causing backups
	Potential 4(f) and property impacts

*Recommendation: Operational improvements not consistent with project goals – **Option not recommended for further study.***

Intersection Options

*Ashworth Ave / Ocean Blvd (Option B3):
Two Lane Roundabout*



Key Plan

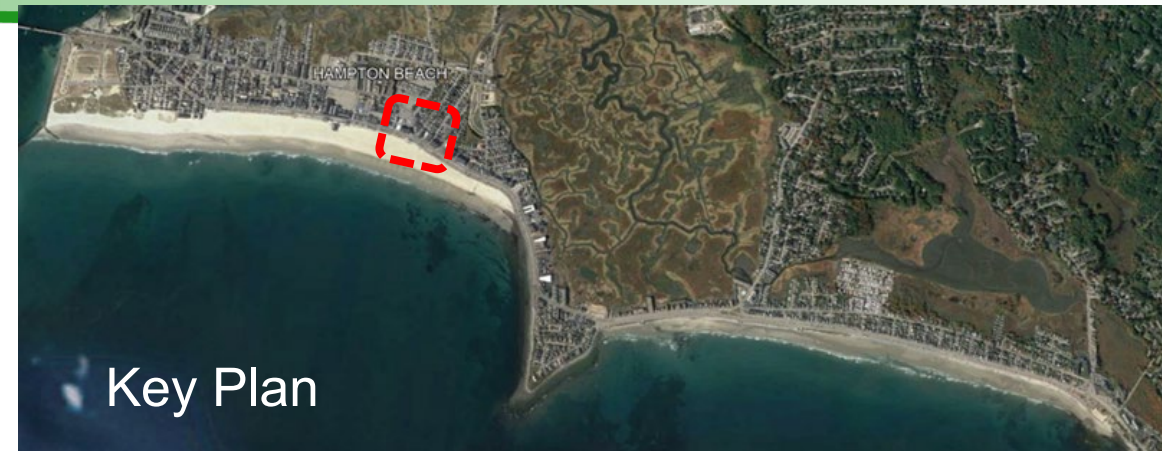
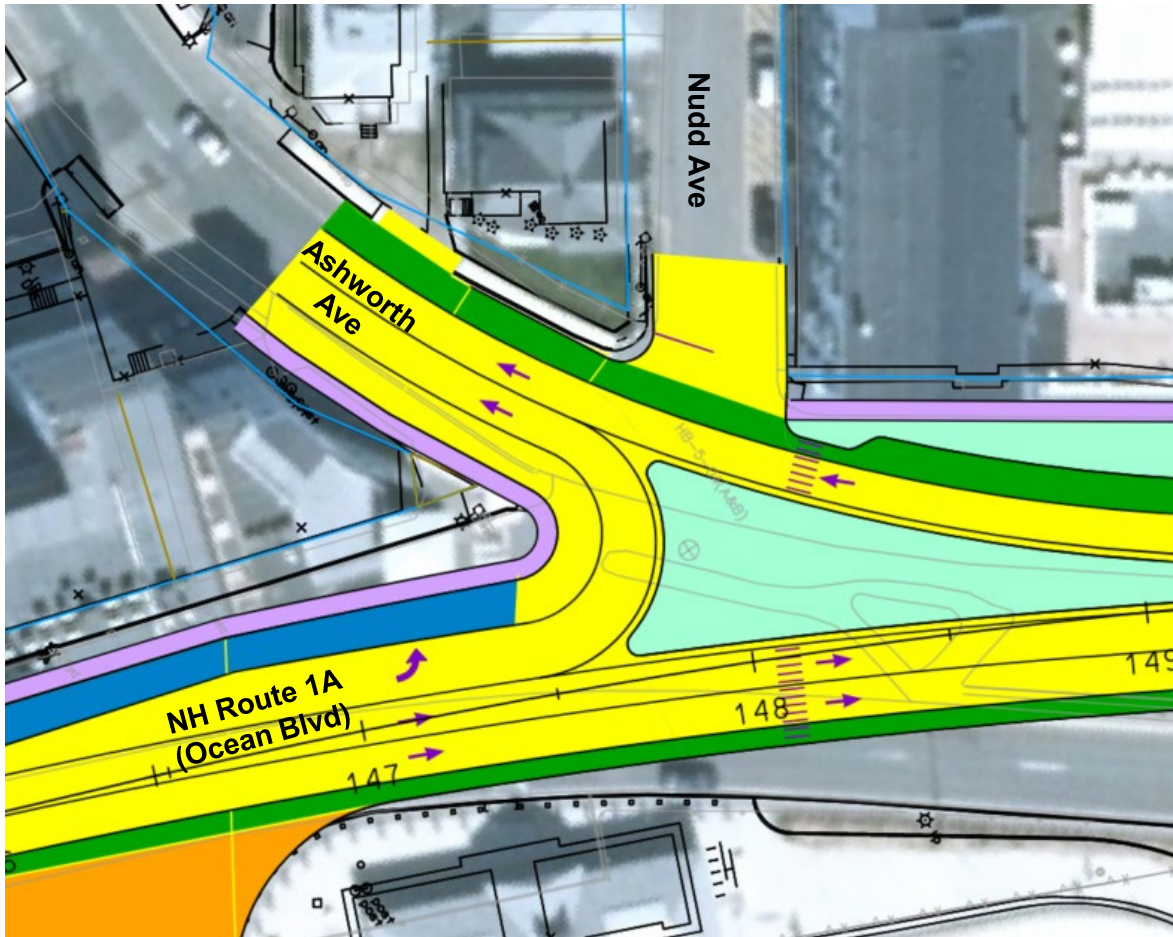
	SIDRA Analysis	
	Intersection Delay	Intersection LOS
Weekend MD	7.7	A
Weekend PM	23.3	C

Advantages	Disadvantages
Allows Ashworth Ave traffic to U-Turn to Ocean Blvd NB without merging	Impacts to Harbor Rd and Old Ocean Blvd
	Substantial impacts to Wok Restaurant
	Potential 4(f) impacts
	Reduced Access to Old Ocean Blvd, Harbor Road and Duston Ave

Recommendation: Option not recommended for further study due to property impacts and reduced access.

Intersection Options

Ashworth Ave / Nudd Ave (Option C1): Reverse Direction



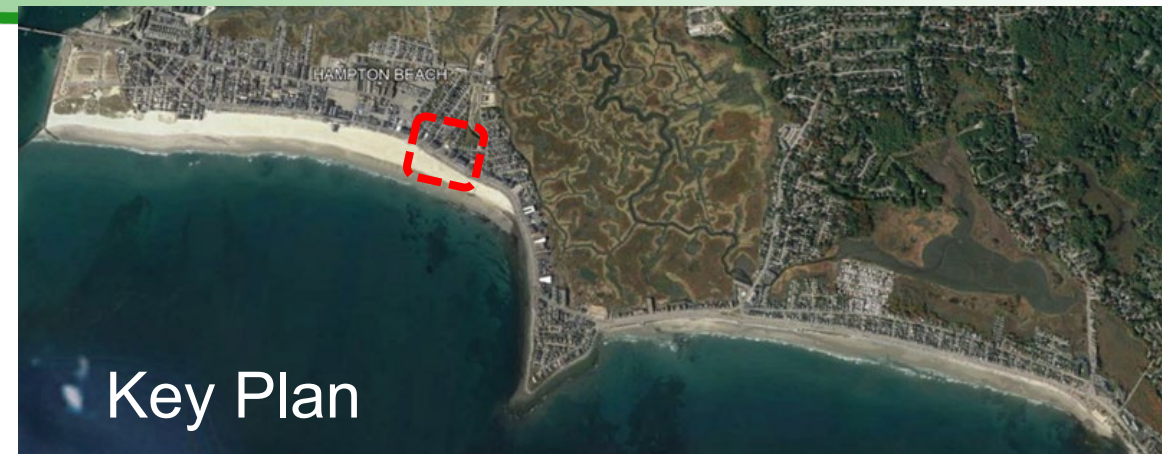
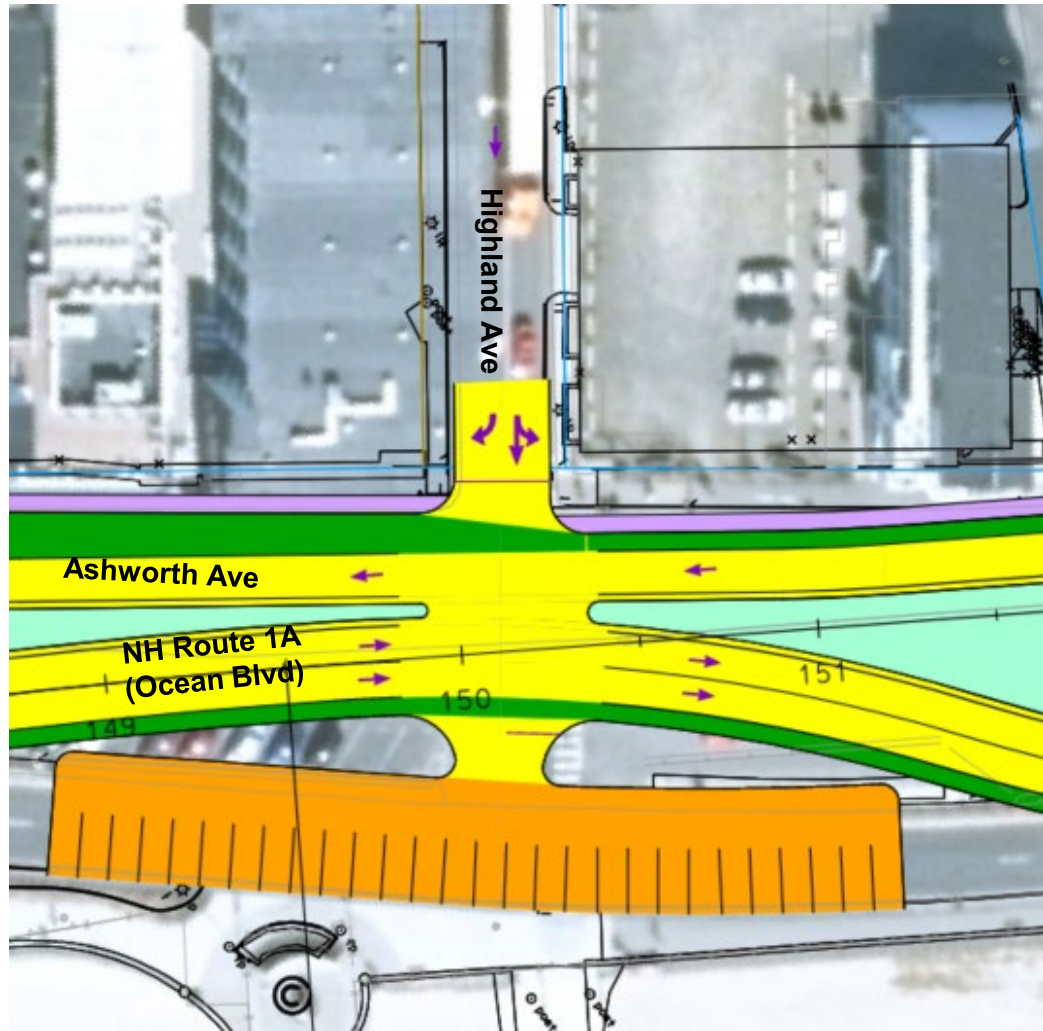
Key Plan

Advantages	Disadvantages
Allows reverse direction without entering adjacent parking areas	
Defines the pavement use	
U-turn traffic removed from the Church Street / Highland Avenue area	

*Recommendation: Option provides an additional option to reverse direction and defines the intersection. **Option recommended for further study.***

Intersection Options

Highland Ave (Option D1): Unsignalized



Key Plan

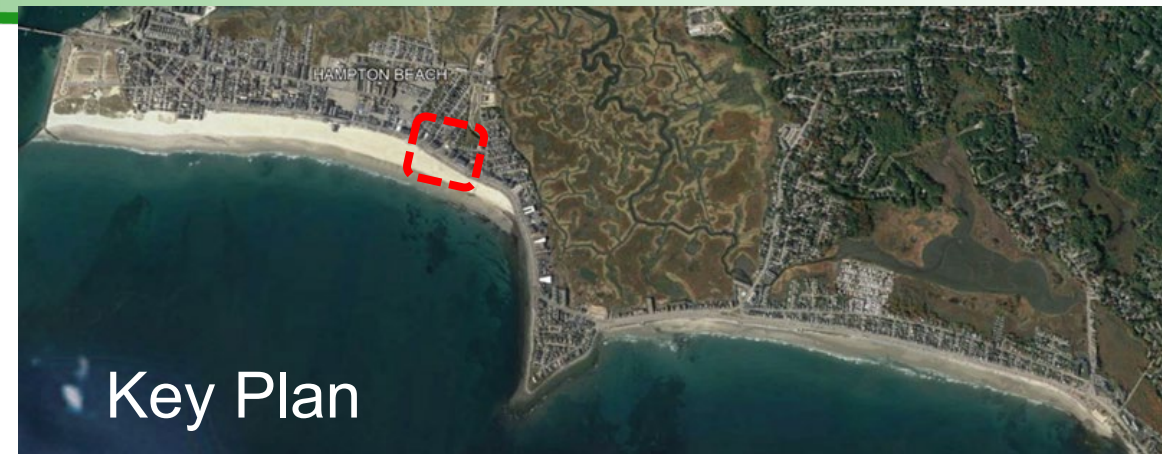
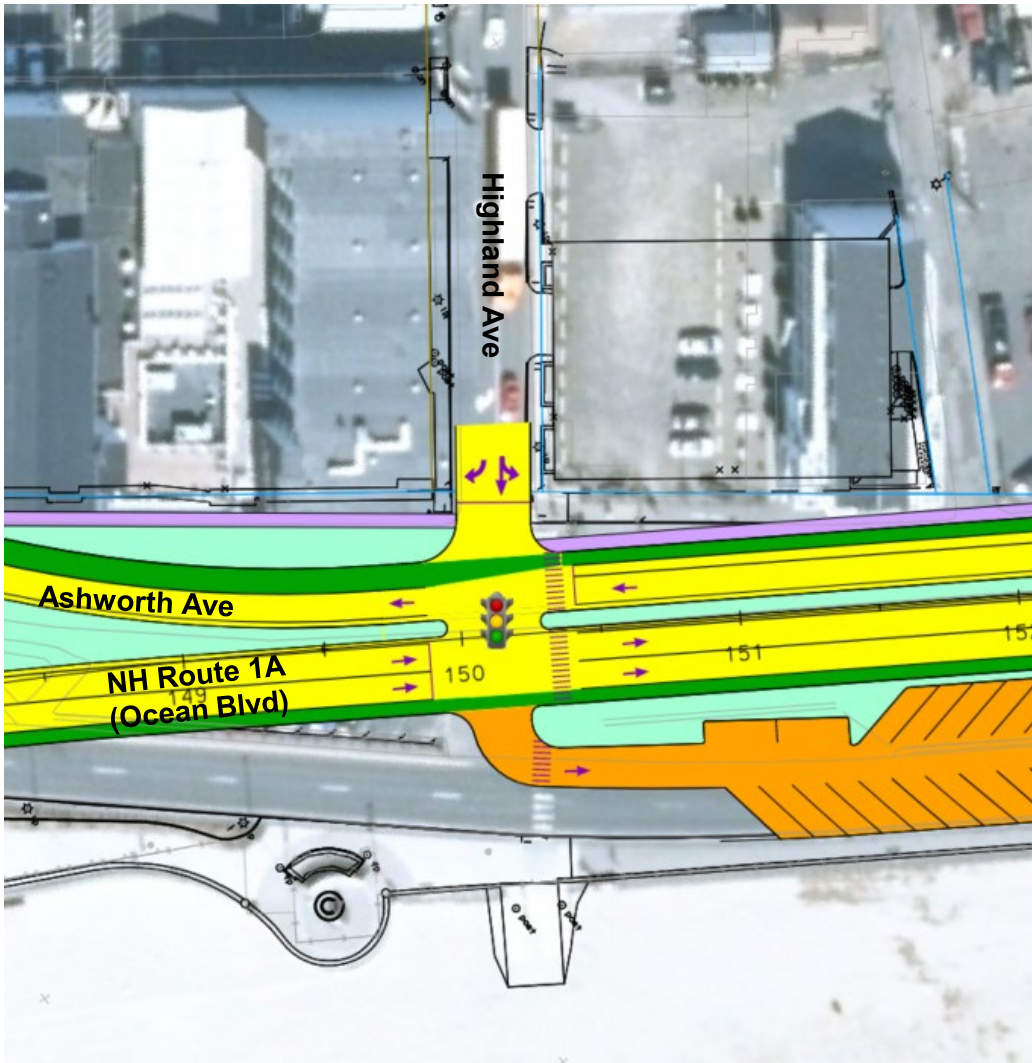
	Synchro Analysis	
	Intersection Delay	Intersection LOS
Weekend MD	142.5	F
Weekend PM	209.5	F

Advantages	Disadvantages
Provides access to parking from Highland Avenue	Increase the left turn conflicts
	Poor Operational Performance

*Recommendation: Operational improvements not consistent with project goals - **Option not recommended for further study.***

Intersection Options

Highland Ave (Option D1): Signalized



Key Plan

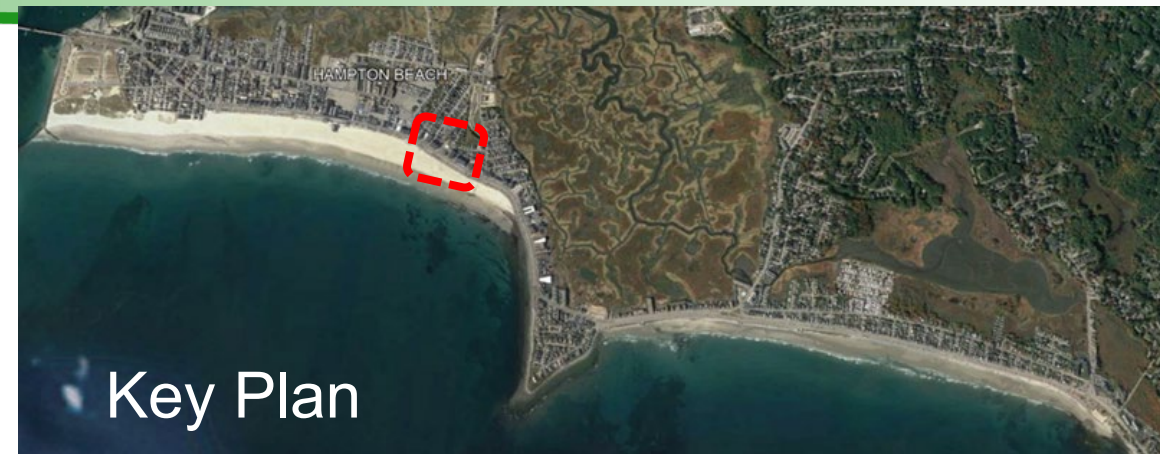
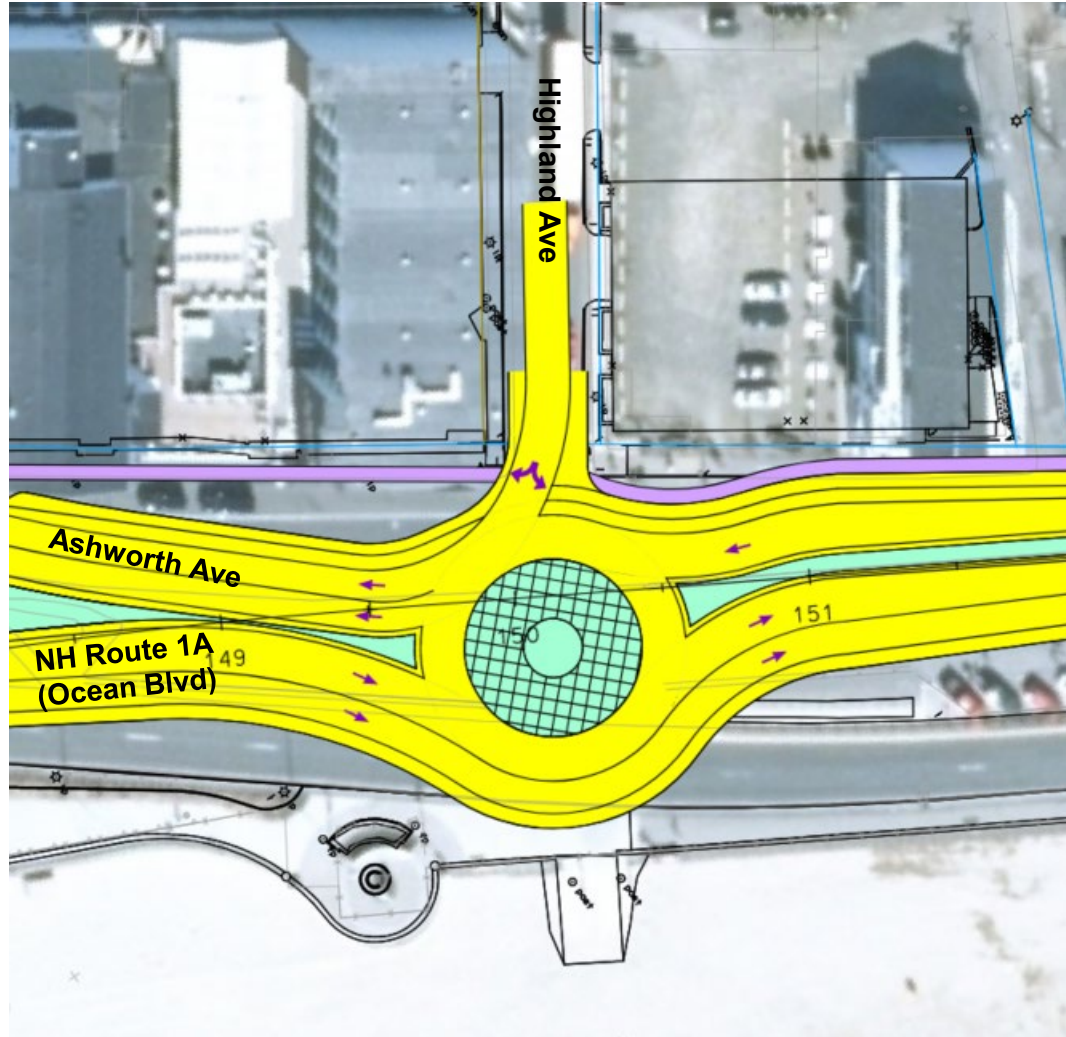
	Synchro	
	Intersection Delay	Intersection LOS
Weekend MD	31.2	C
Weekend PM	27.7	C

Advantages	Disadvantages
Reduces the left turn conflicts	Additional Maintenance and Operational costs (signals)
Provides access to parking from Highland Street	

Recommendation: Option recommended for further study.

Intersection Options

*Highland Ave (Option D3):
Roundabout NB 2-Lanes*



Key Plan

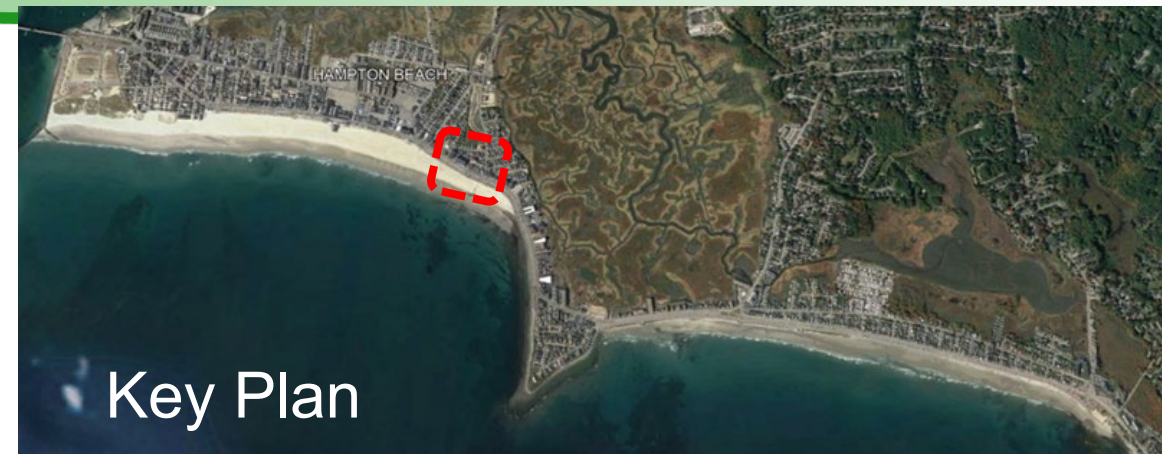
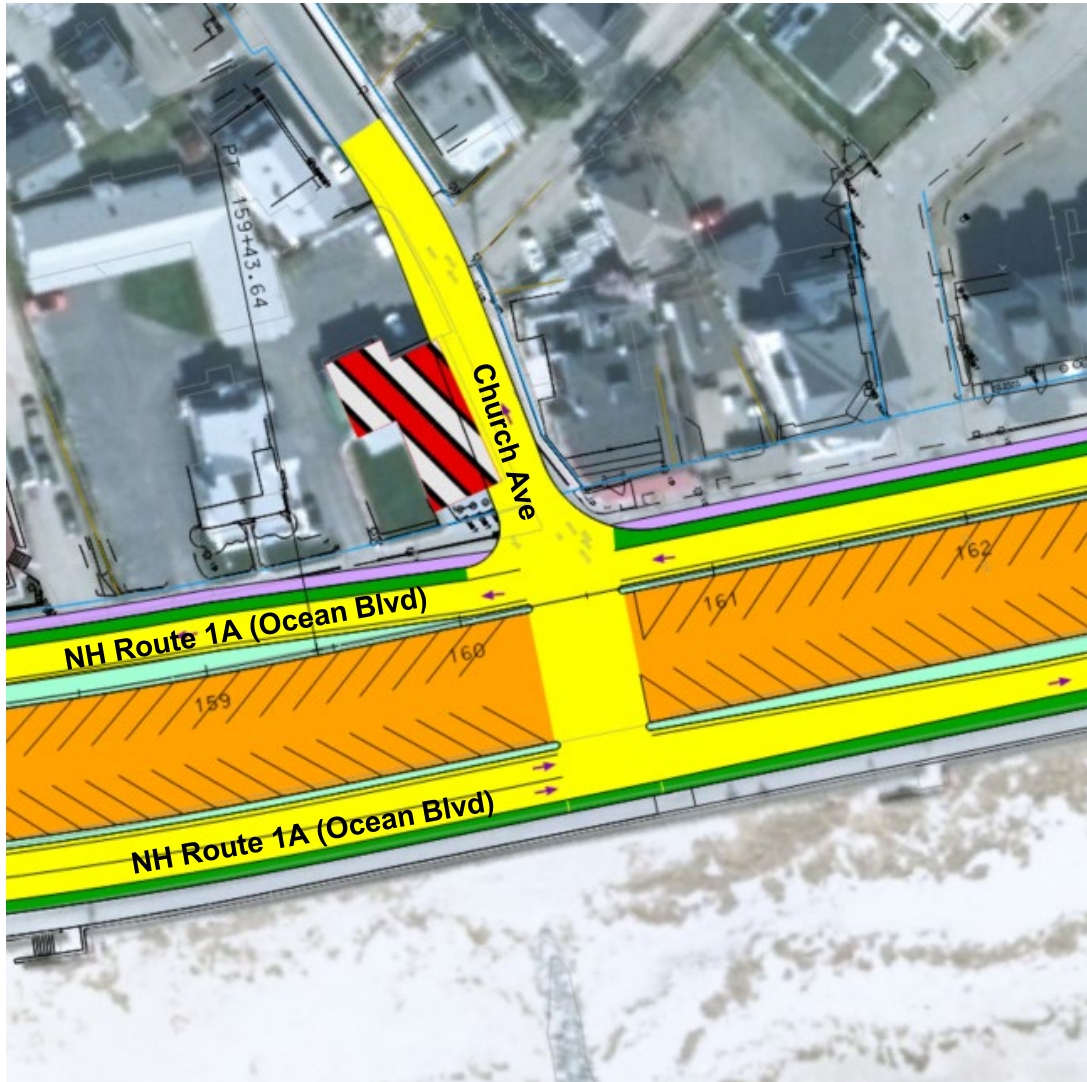
	Synchro Analysis	
	Intersection Delay	Intersection LOS
Weekend MD	10.7	B
Weekend PM	12.1	B

Advantages	Disadvantages
Allows reverse direction for SB / NB traffic without using parking areas	Geometrically constrained – impacts to properties or to park along beach
Good Operational Performance	Potential impact to Section 6(f) property

Recommendation: Option not recommended for further study due to potential 6(f) property impacts.

Intersection Options

Church St (Option E1): Unsignalized



Key Plan

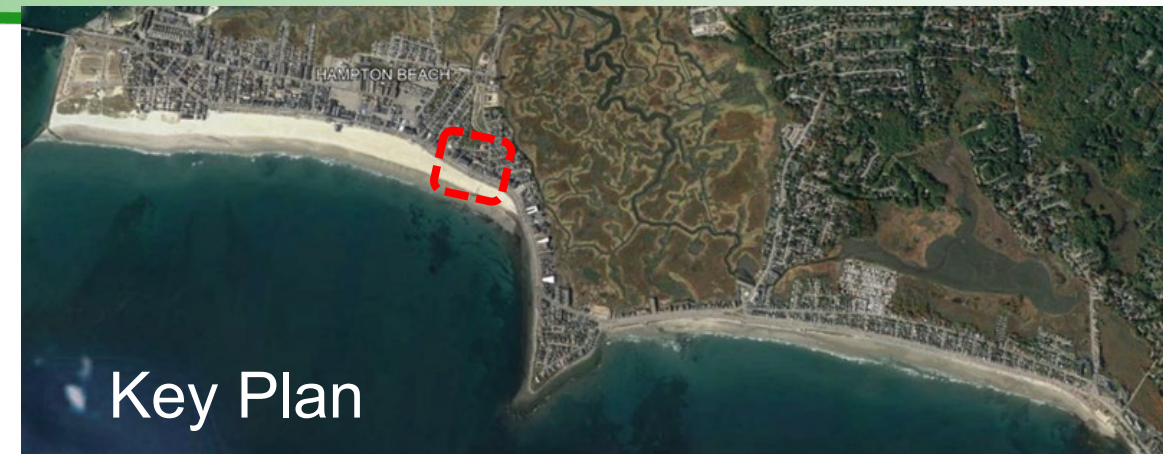
	Synchro Analysis	
	Intersection Delay	Intersection LOS
Weekend MD	20.3	C
Weekend PM	58.4	F

Advantages	Disadvantages
No additional Operations and Maintenance Costs (signals)	Unconventional intersection
	Property acquisition required to improve turning movements
	Creates conflicts with parking lot traffic accessibility

Recommendation: Option not recommended for further study.

Intersection Options

Church St (Option E2): Signalized



Key Plan

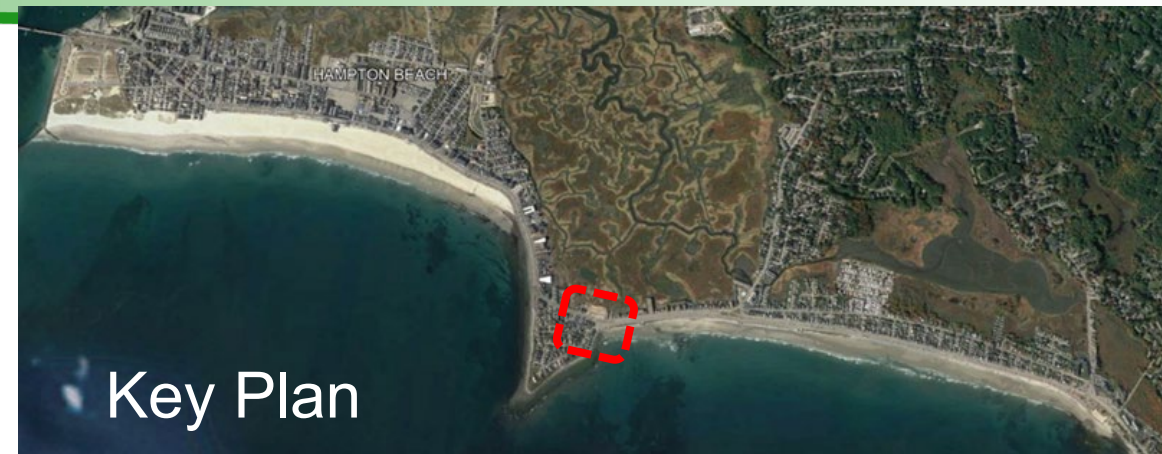
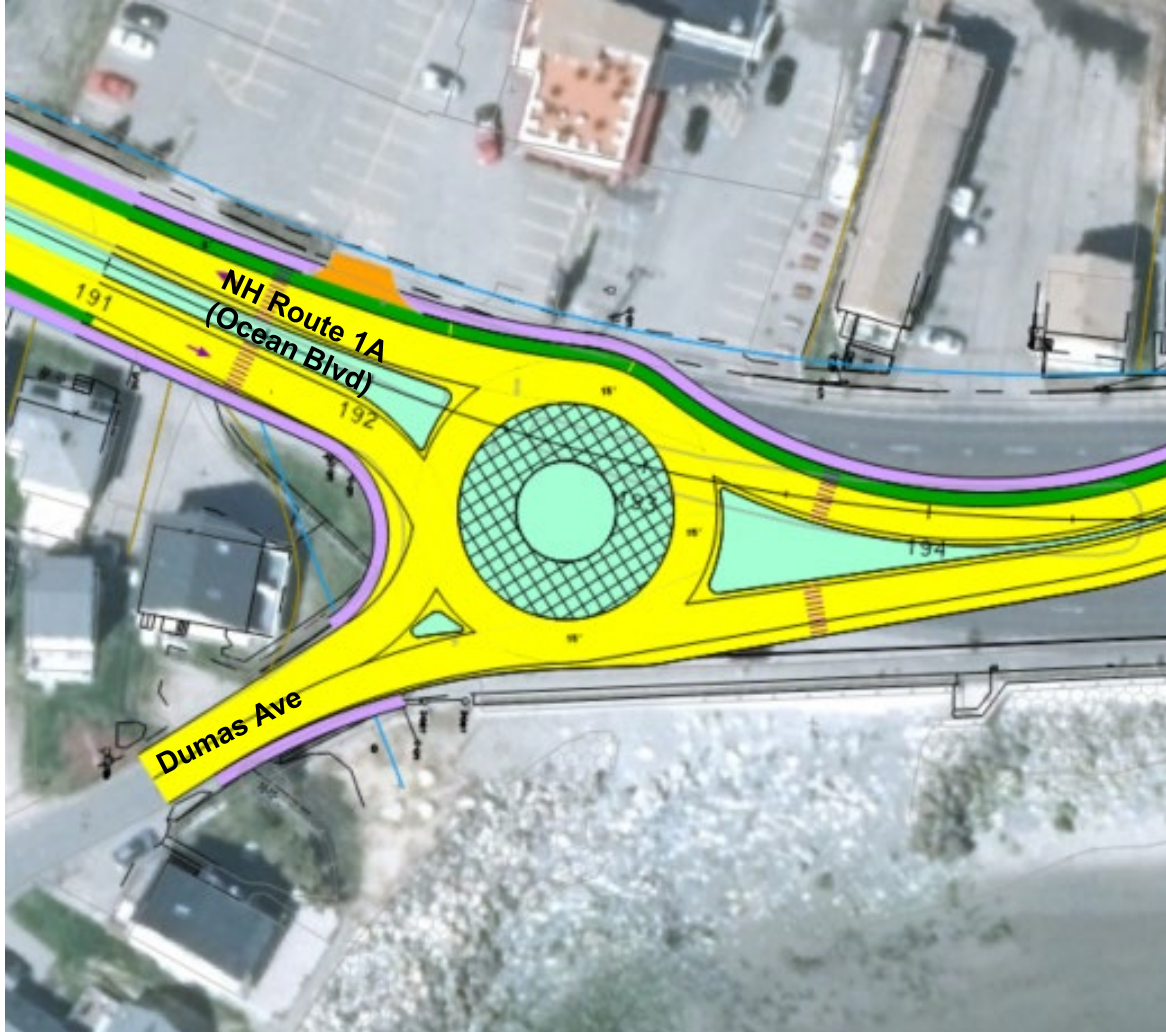
	Synchro	
	Intersection Delay	Intersection LOS
Weekend MD	10.1	B
Weekend PM	30.3	C

Advantages	Disadvantages
More conventional intersection	Property acquisition required to improve turning movements
Satisfactory Operational Performance	Parking outlet required to be further north of intersection
	Additional Maintenance and Operations Costs (signals)

Recommendation: Signal not warranted under average monthly traffic flow. Option recommended for further study.

Intersection Options

Dumas Ave (Option F1): Roundabout



Key Plan

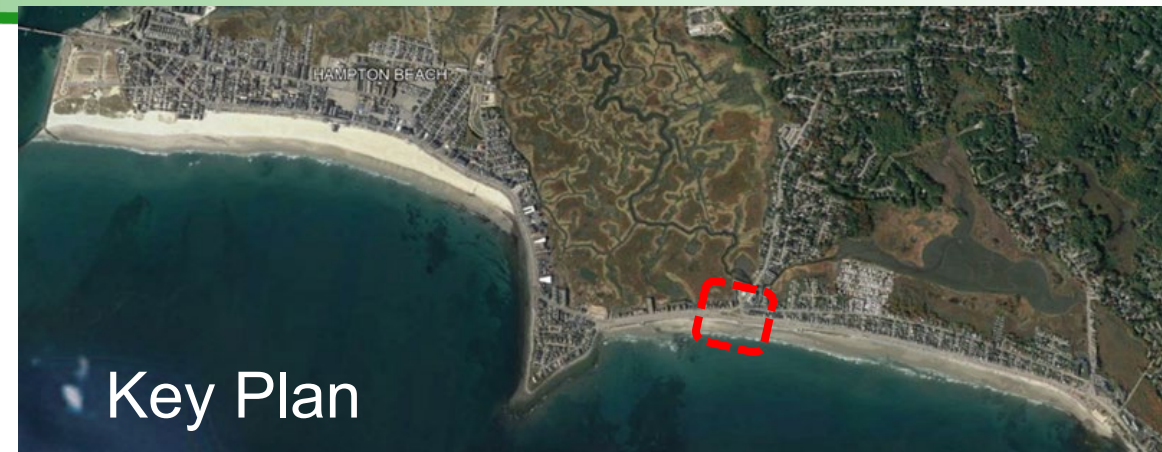
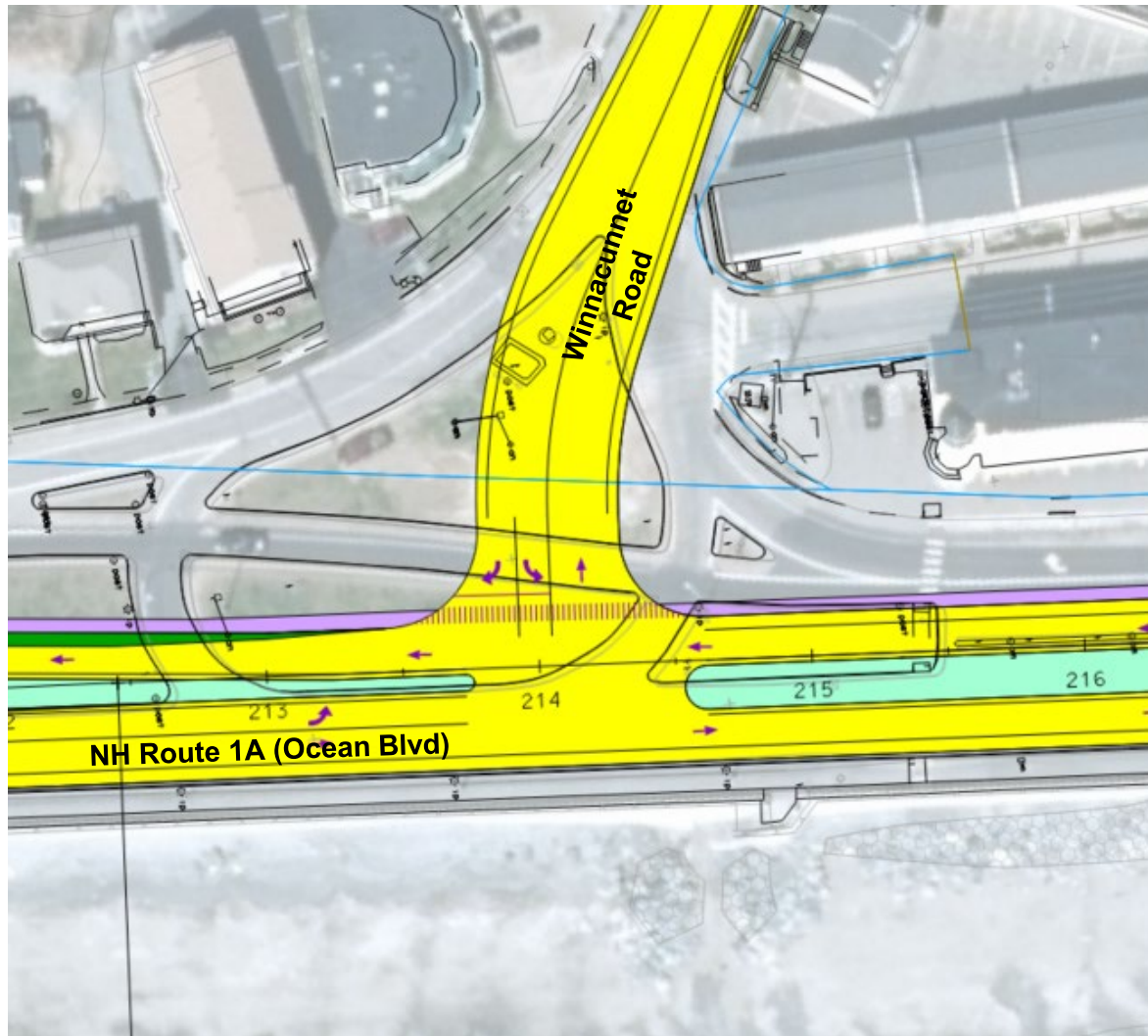
SIDRA Analysis		
	Intersection Delay	Intersection LOS
Weekend MD	8.4	A
Weekend PM	7.8	A

Advantages	Disadvantages
Allows reversing direction	Requires moving new apartment complex drive further south
Less conflict points than traditional intersection	

Recommendation: Option recommended for further study.

Intersection Options

Winnecunnet Rd (Option G1): Unsignalized



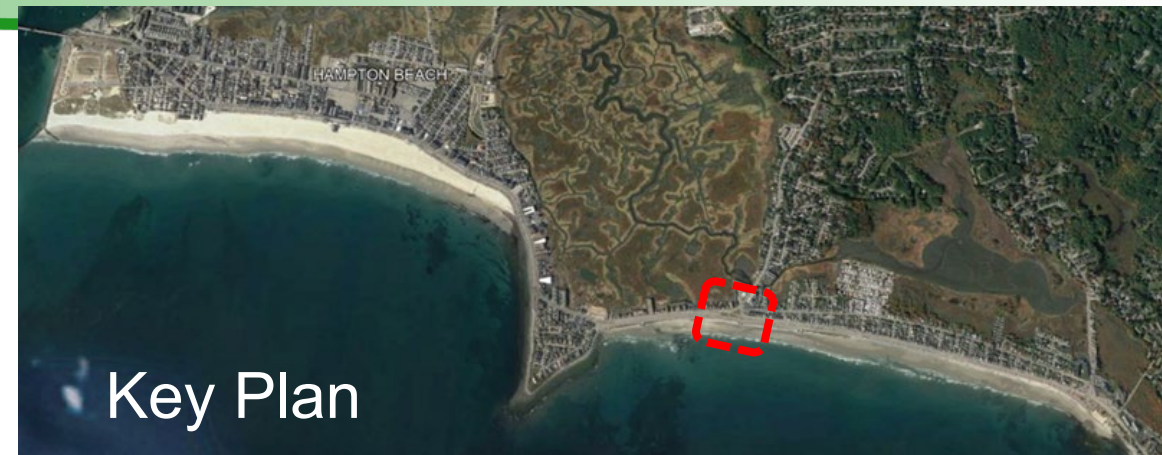
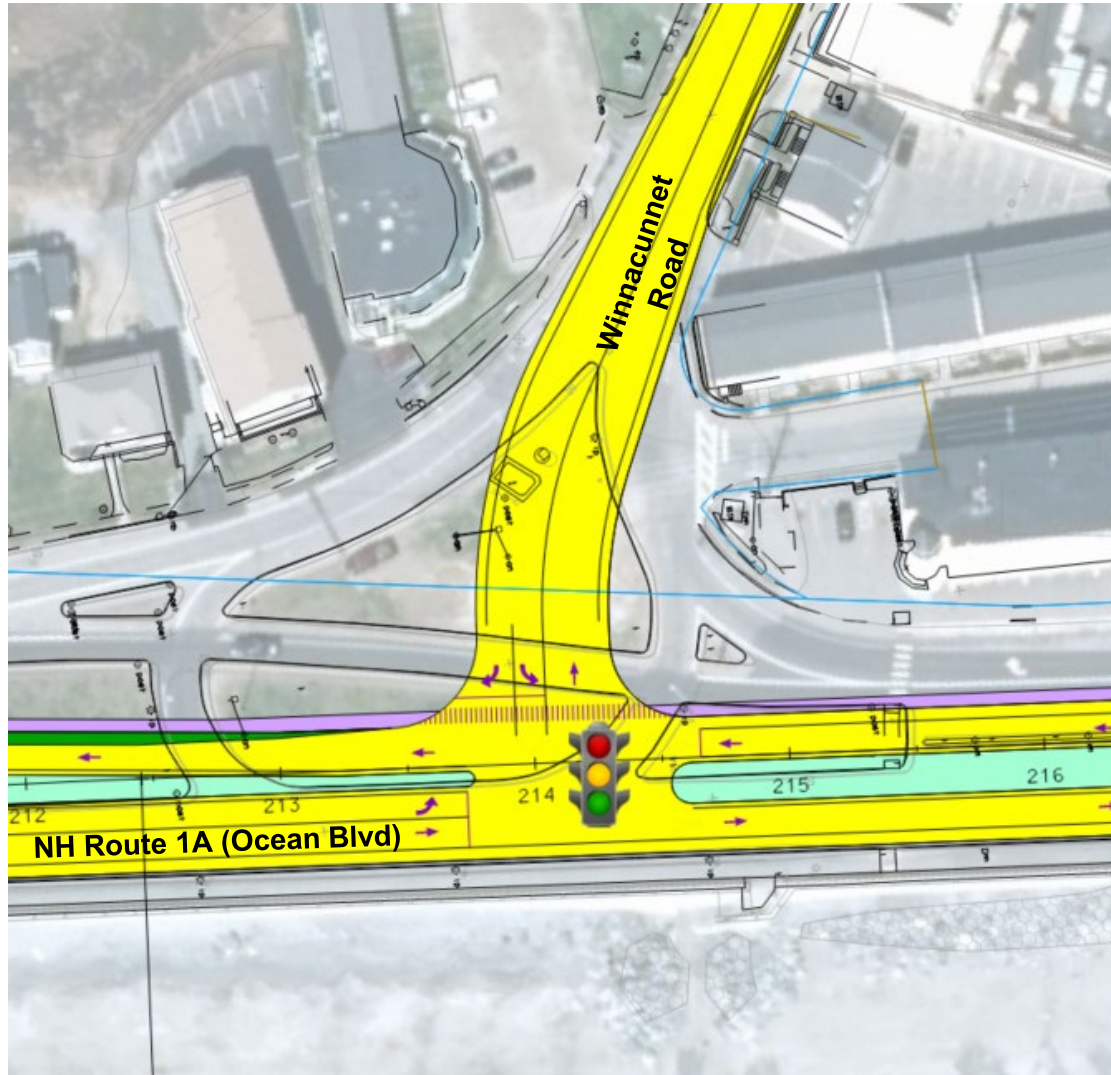
	Synchro Analysis	
	Intersection Delay	Intersection LOS
Weekend MD	365.3	F
Weekend PM	150.6	F

Advantages	Disadvantages
More traditional intersection	Poor Operational Performance

*Recommendation: Operational improvements not consistent with project goals – **Option not recommended for further study.***

Intersection Options

Winnecunnet Rd (Option G2): Signalized



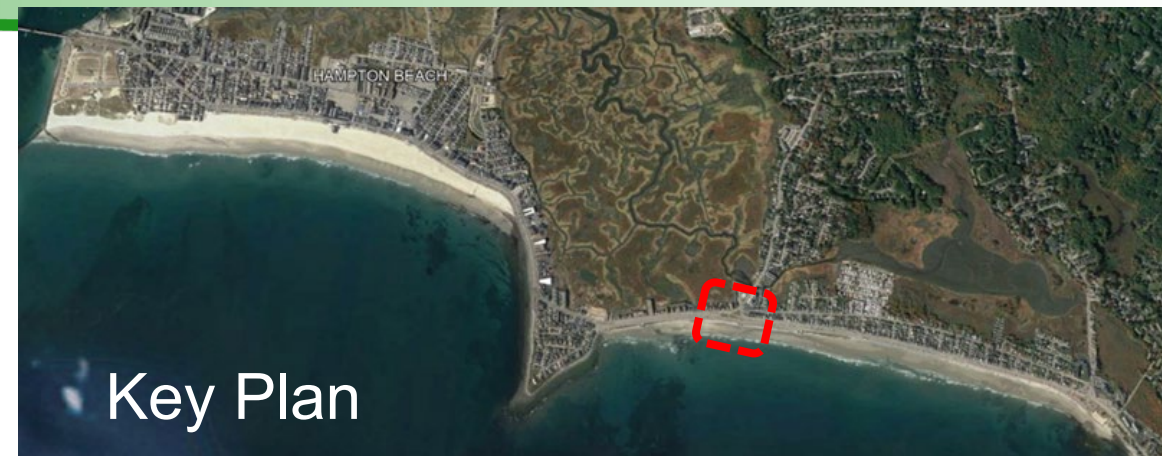
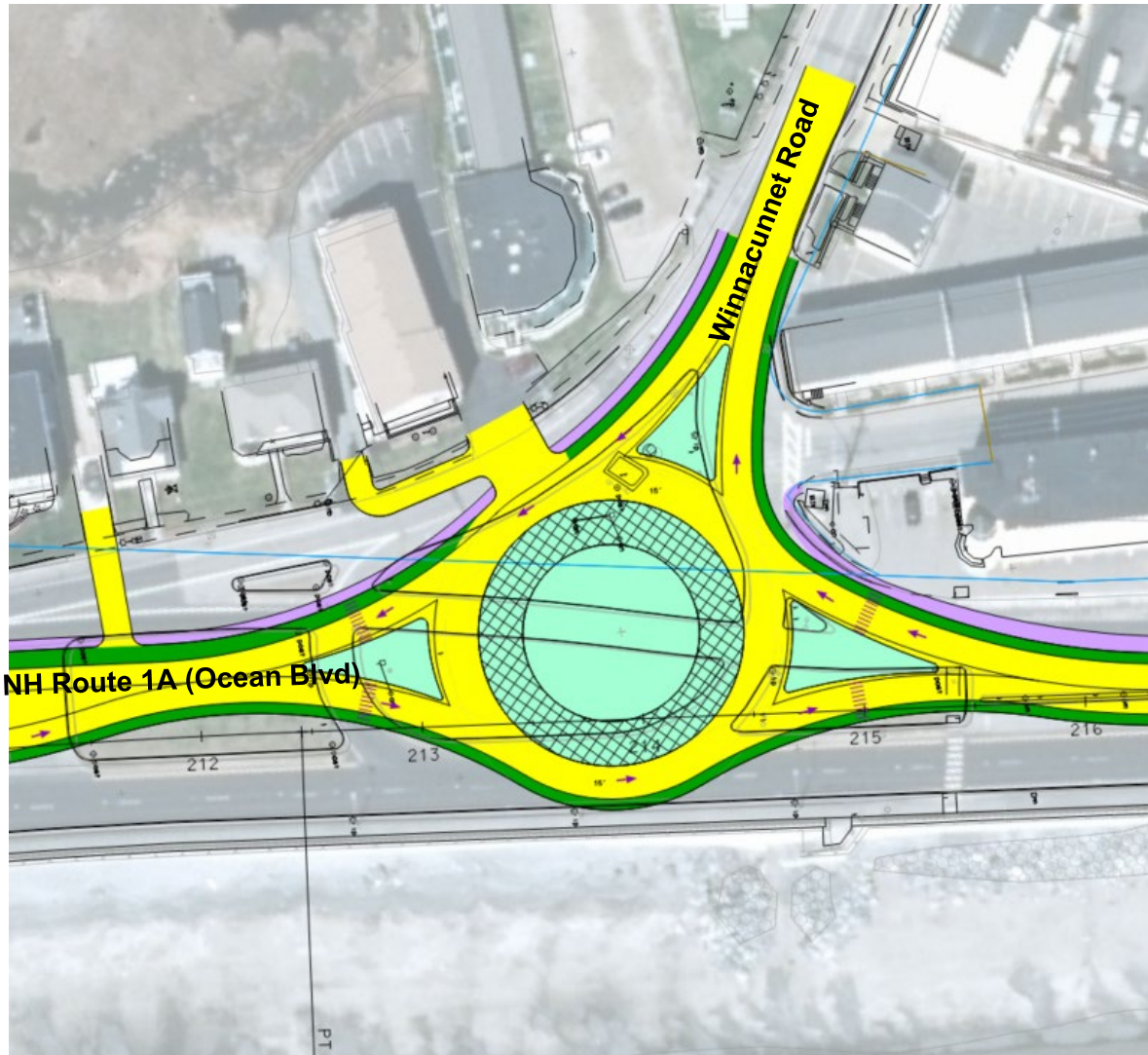
	Synchro Analysis	
	Intersection Delay	Intersection LOS
Weekend MD	28.6	C
Weekend PM	20.4	C

Advantages	Disadvantages
More traditional intersection	Additional Operations and Maintenance Costs (signals)
Provides Pedestrian Crossing Phase	

*Recommendation: Signal not warranted under average monthly traffic flow. **Option not recommended for further study.***

Intersection Options

Winnecunnet Rd (Option G3): Roundabout



Key Plan

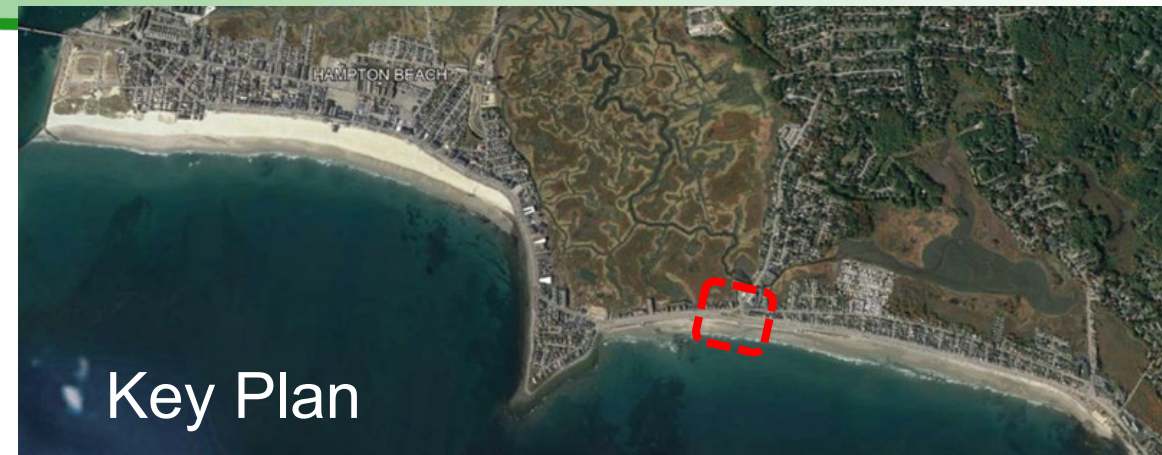
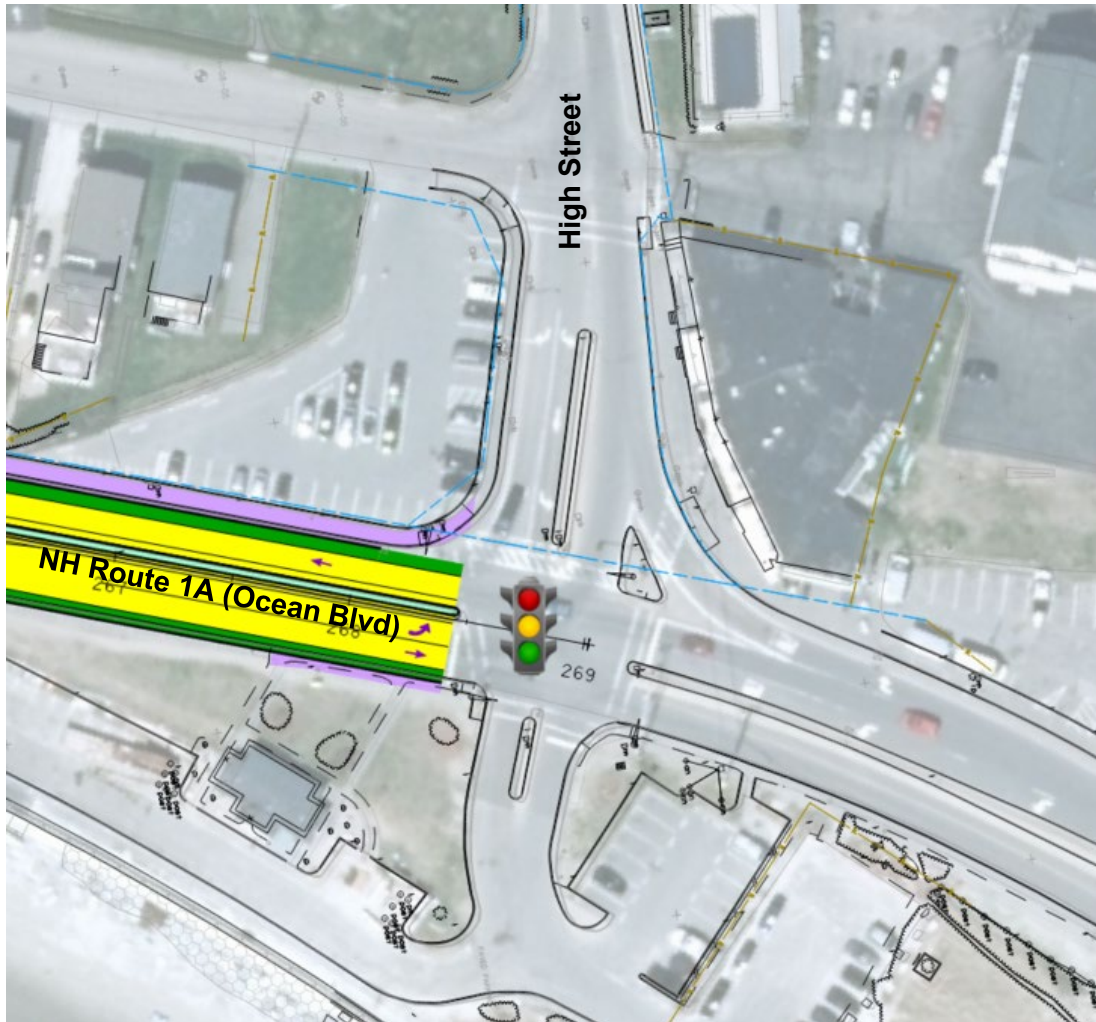
	SIDRA Analysis	
	Intersection Delay	Intersection LOS
Weekend MD	10.1	B
Weekend PM	8.8	A

Advantages	Disadvantages
More traditional intersection and less conflict points than a T-intersection	Right in / right out for Kings Hwy
No additional maintenance costs (signals)	

Recommendation: Option recommended for further study.

Intersection Options

High Street (Option H1): Signalized Intersection



Key Plan

	Synchro Analysis	
	Intersection Delay	Intersection LOS
Weekend MD	25.3	C
Weekend PM	20.2	C

Advantages	Disadvantages
Provides bicycle access to intersection	No additional improvements under this project.
Maintains current operations (signalized)	

*Recommendation: Maintain existing signal, shift center island to accommodate bicycle lanes. **Option recommended for further study.***

Questions? Comments?



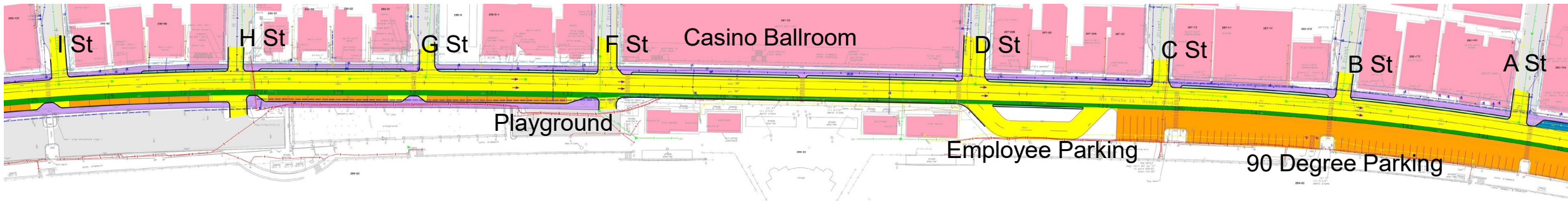
Revised Typical – I Street to Ashworth Avenue



Refined Corridor Options

I St to Ashworth Ave

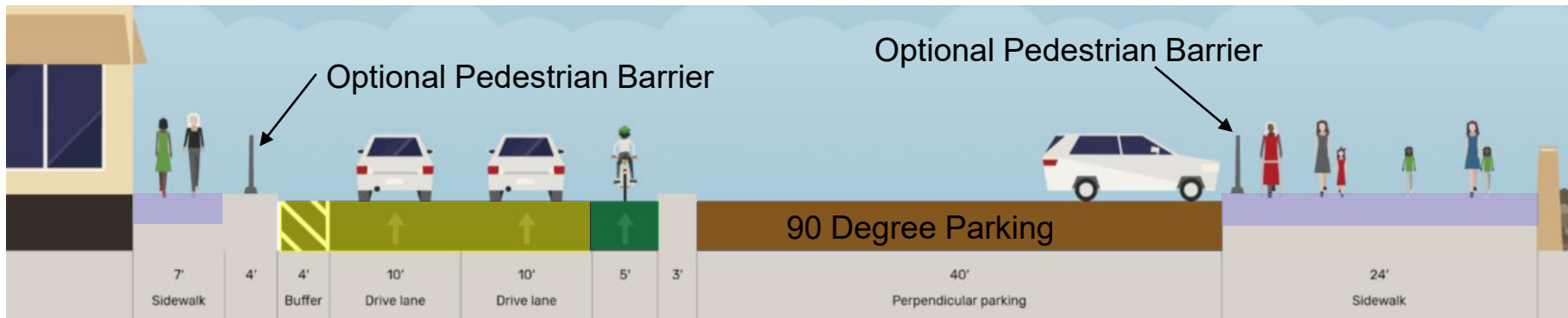
90 Degree Parking Option



Parking Summary:

Existing = 66

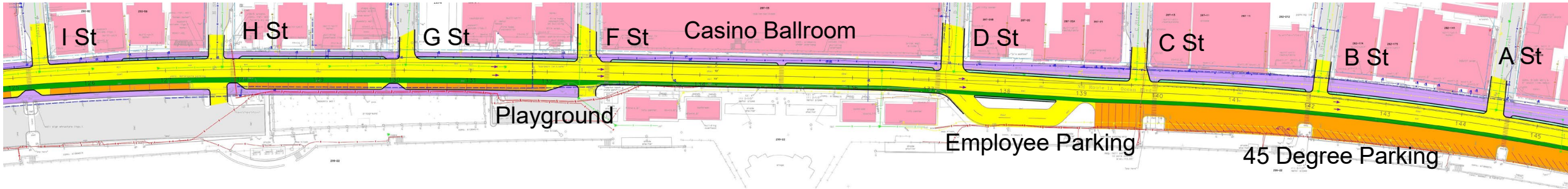
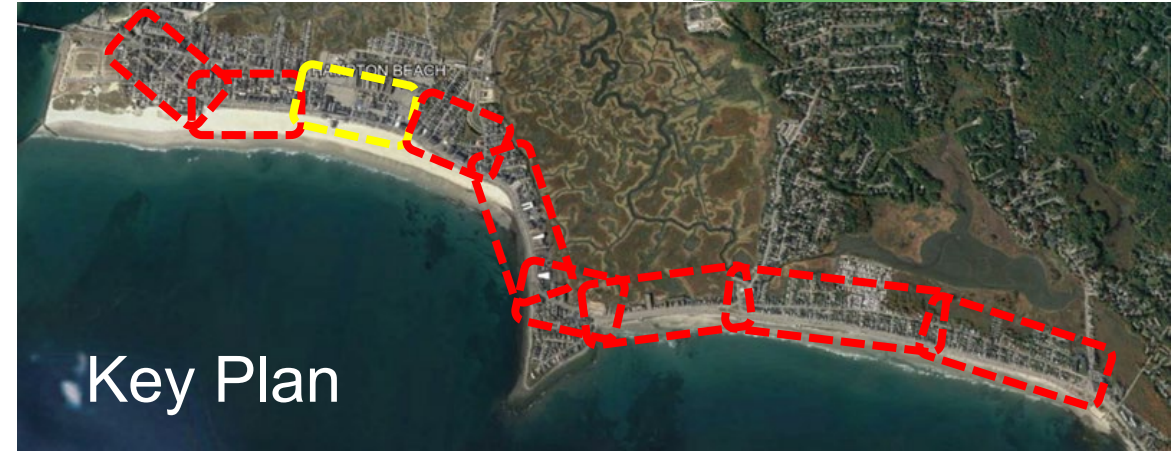
Proposed = 66



Refined Corridor Options

I St to Ashworth Ave

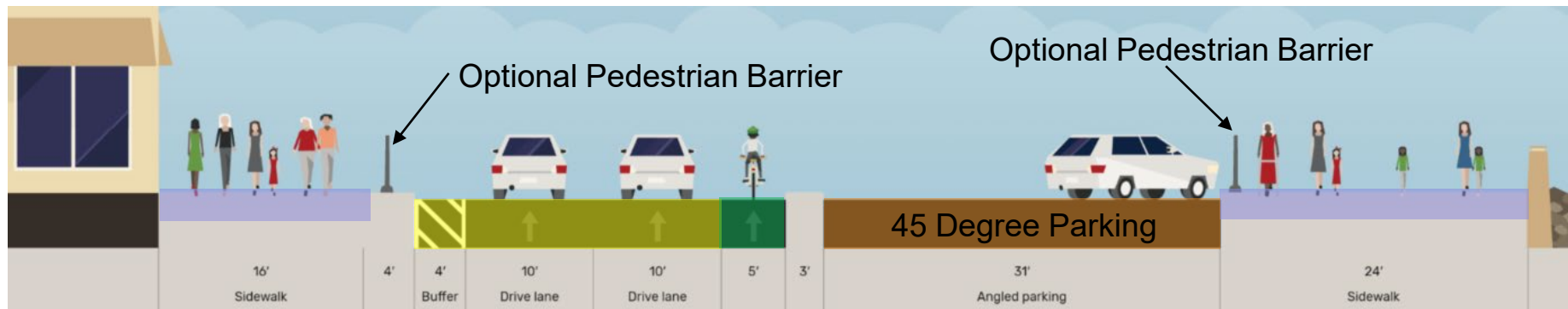
45 Degree Parking Option



Parking Summary:

Existing = 66

Proposed = 60



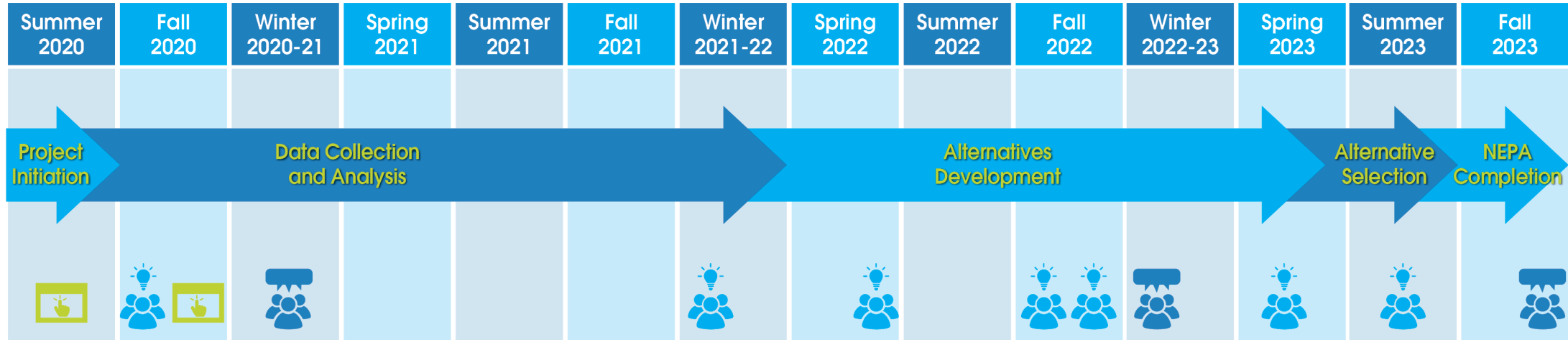
Next Steps



Next Steps

- Continue coordination with Office of Community Recreation, Division of Parks and Recreation re: Section 6(f) boundary
- Natural Resources Agency Meeting #1 (December 2022)
- Cultural Resources Coordination Meeting #2 (January 2023)
- Public Information Meeting #2 (January 2023)
- Assess impacts of alternatives (Spring/Summer 2023)
- PAC Meeting (Spring 2023)
- Public Hearing (Late 2023)

Project Schedule



 Survey/Wikimap

 PAC Meeting

 Public Meeting/Hearing

We are here

Questions? Comments?



Thank you!

