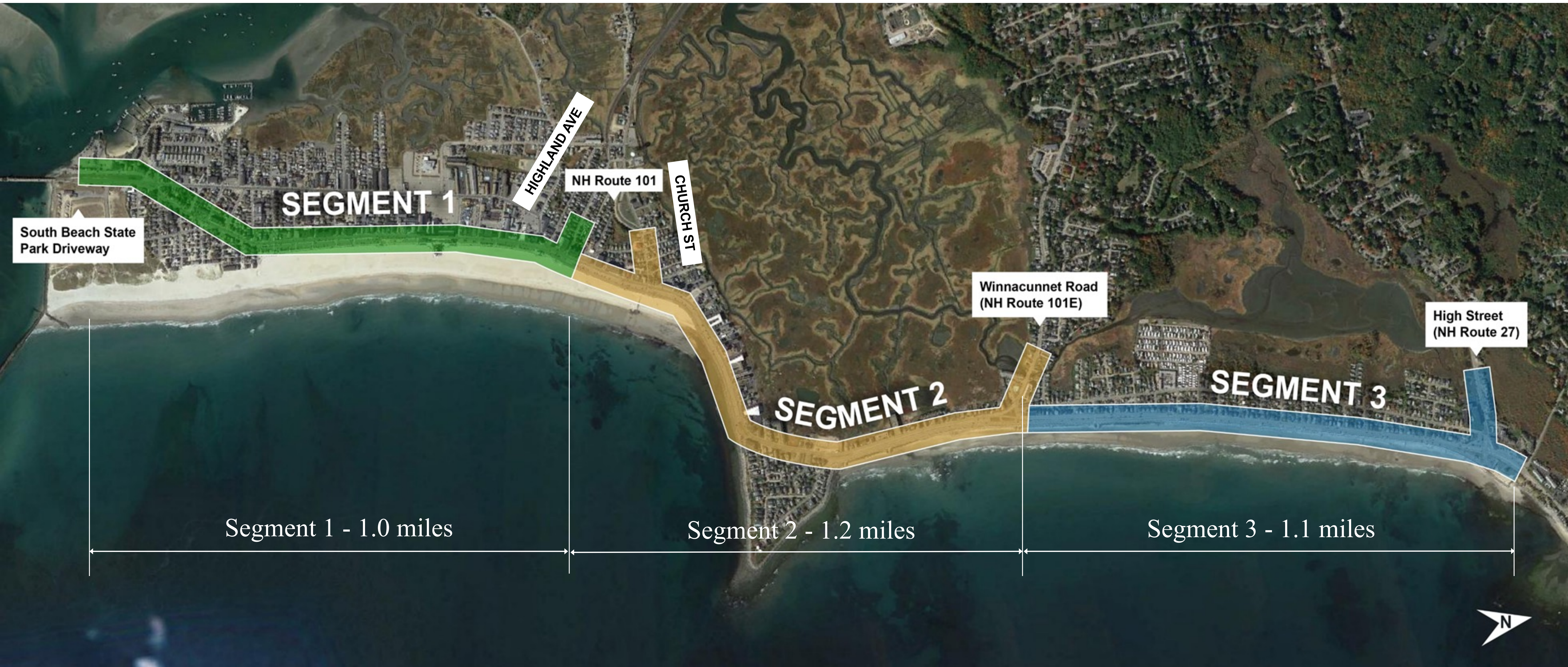


Hampton 40797
Ocean Boulevard (NH Route 1A)

Public Open House Welcome!

Saturday, February 25, 2023

Project Limits and Corridor Segments



Project Purpose and Need

NEED

What are the travel needs in the corridor?

- Lack of high-quality multi-modal facilities;
- Uncomfortable pedestrian, bicycle and vehicular interactions;
- Undefined pedestrian sidewalks, limited crosswalk amenities and inaccessible sidewalk areas;
- Narrow roadway shoulders used by bicycles creating riding conditions not suitable for all ages and abilities;
- Vehicle circulation challenges related to parking lot and roadway crossing layouts along with heavy pedestrian crossing locations;
- Poorly configured intersections with major state highways;
- Poor wayfinding and no real-time parking utilization information contribute to congestion; and
- Recurring safety and maintenance concerns resulting from increasing flooding events that often block portions of the vehicular travel lanes

PURPOSE

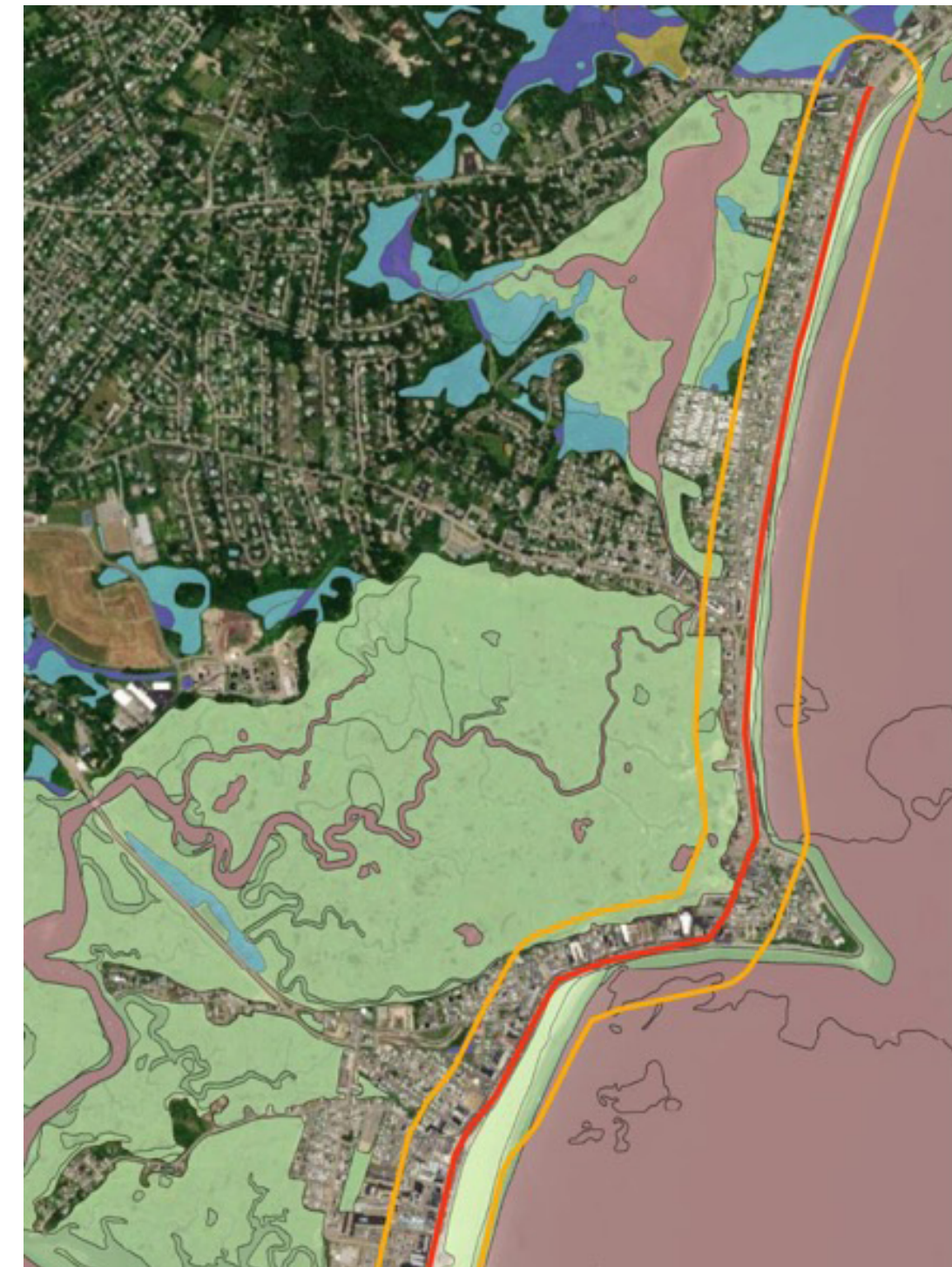
What must the improvements achieve?

- Improve pedestrian and bicyclist connectivity, safety and traffic operations through enhanced multimodal accommodations
- Improve overall function of the NH Route 1A transportation corridor while addressing climate change resiliency

Natural, Cultural, and Park Resource Considerations

Natural Resources Assessed

- Wetlands
- Flood Zones & Vulnerable Areas
- Parks
- Natural Heritage Communities
- Environmental Risk Sites
- Land Uses



Cultural Resources Coordination

- NH Division of Historical Resources and consulting parties
- Potential 4(f)* properties identified for further evaluation, if potentially affected
- Archeological Assessment completed



Parks Consideration

- Hampton Beach State Park is Section 4(f)* and 6(f)** property



* More on Section 4(f):

Section 4(f) refers to the original section within the U.S. Department of Transportation Act of 1966 which provided for consideration of park and recreation lands, wildlife and waterfowl refuges, and historic sites considered during transportation project development. Section 4(f) stipulates that the Federal Highway Administration (FHWA) and other U.S. Department of Transportation (DOT) agencies cannot approve the use of such land unless there is no feasible and prudent avoidance alternative to the use of the land, and the action includes all possible planning to minimize harm to the property resulting from such use; or the Administration determines that the use of the property will have a *de minimis* impact.

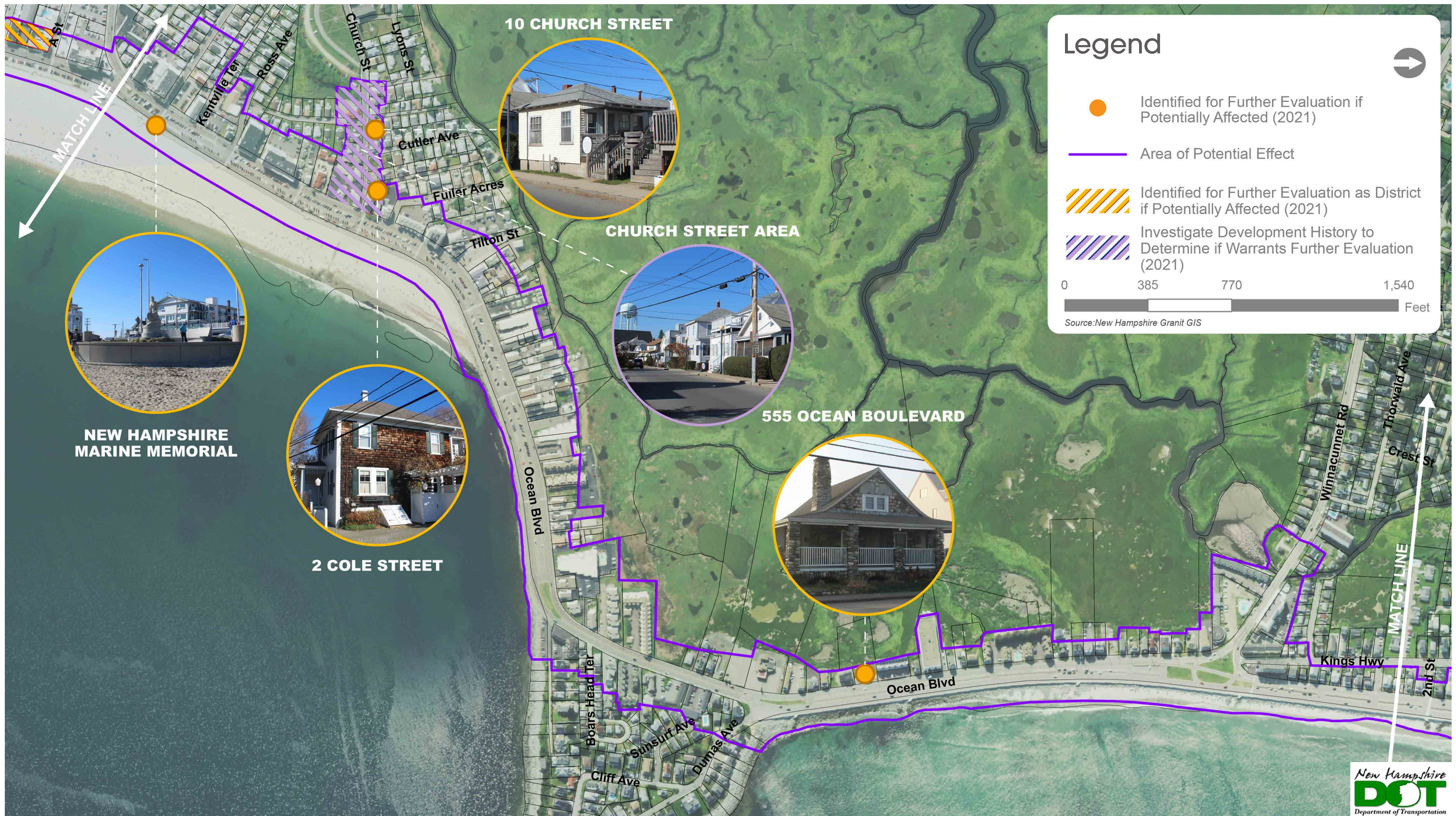
** More on Section 6(f):

The Land and Water Conservation Fund (LWCF) Act of 1965 provides grants to States and local governments for the acquisition and development of public outdoor recreation areas and facilities. The program creates and maintains a legacy of high quality recreation areas and facilities and stimulates non-federal investments in the protection and maintenance of recreation resources. Section 6(f)(3) of the LWCF Act prohibits the conversion of property acquired or developed with grants from this fund to a non-recreational purpose without the approval of the National Park Service.

Potential Historic Properties



Potential Historic Properties



Legend

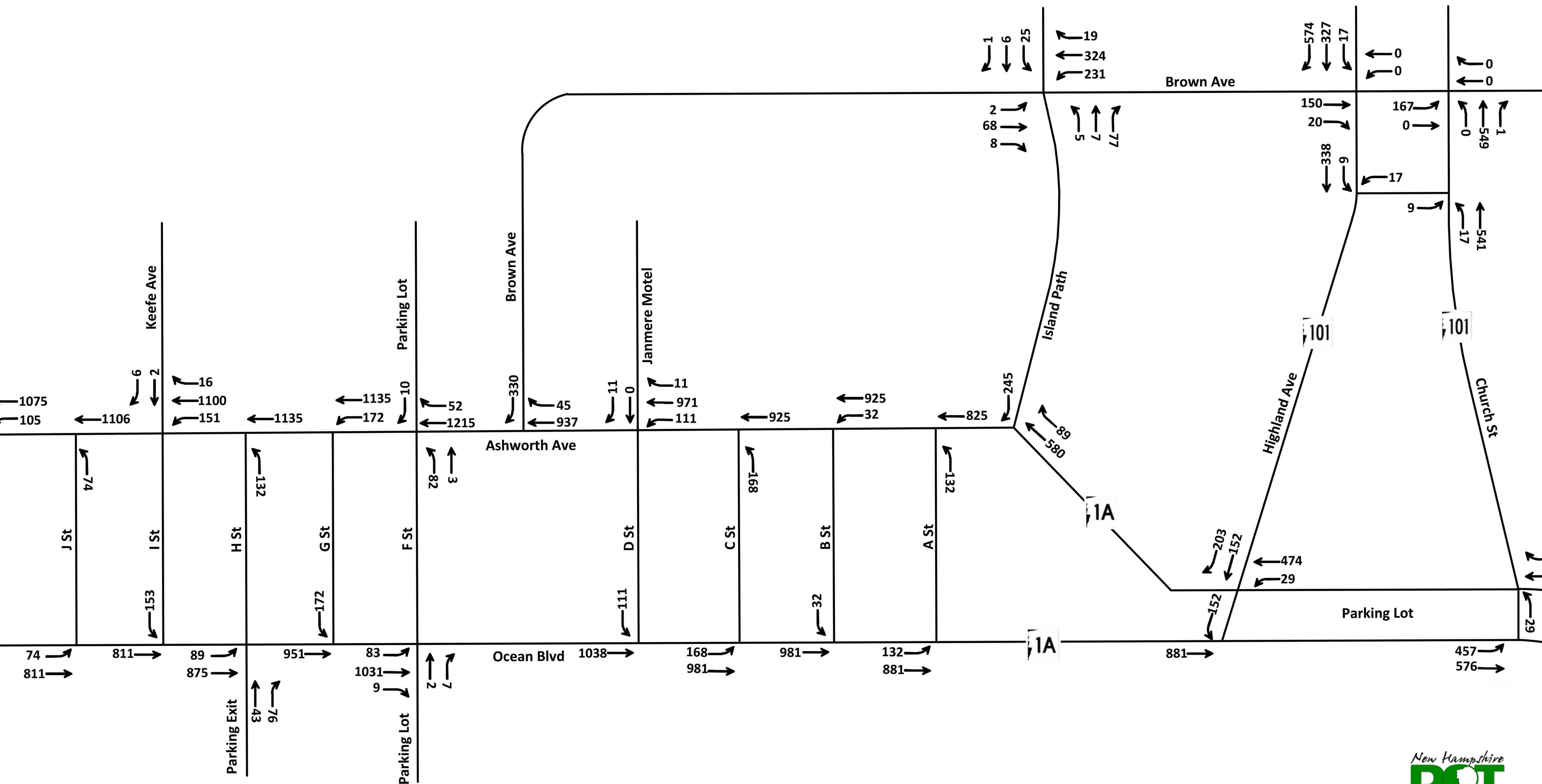
- Identified for Further Evaluation if Potentially Affected (2021)
 - Area of Potential Effect
 - Identified for Further Evaluation as District if Potentially Affected (2021)
 - Investigate Development History to Determine if Warrants Further Evaluation (2021)
- 0 385 770 1,540
 Feet
- Source: New Hampshire Granit GIS

Potential Historic Properties



Vehicular Traffic Volumes

Typical Saturday in August (6 - 7 PM)



Major Pedestrian Routes

↔ Major Pedestrian Routes

Ⓟ Public/Private Parking



FEMA Flood Maps

Corridor Sections from South to North



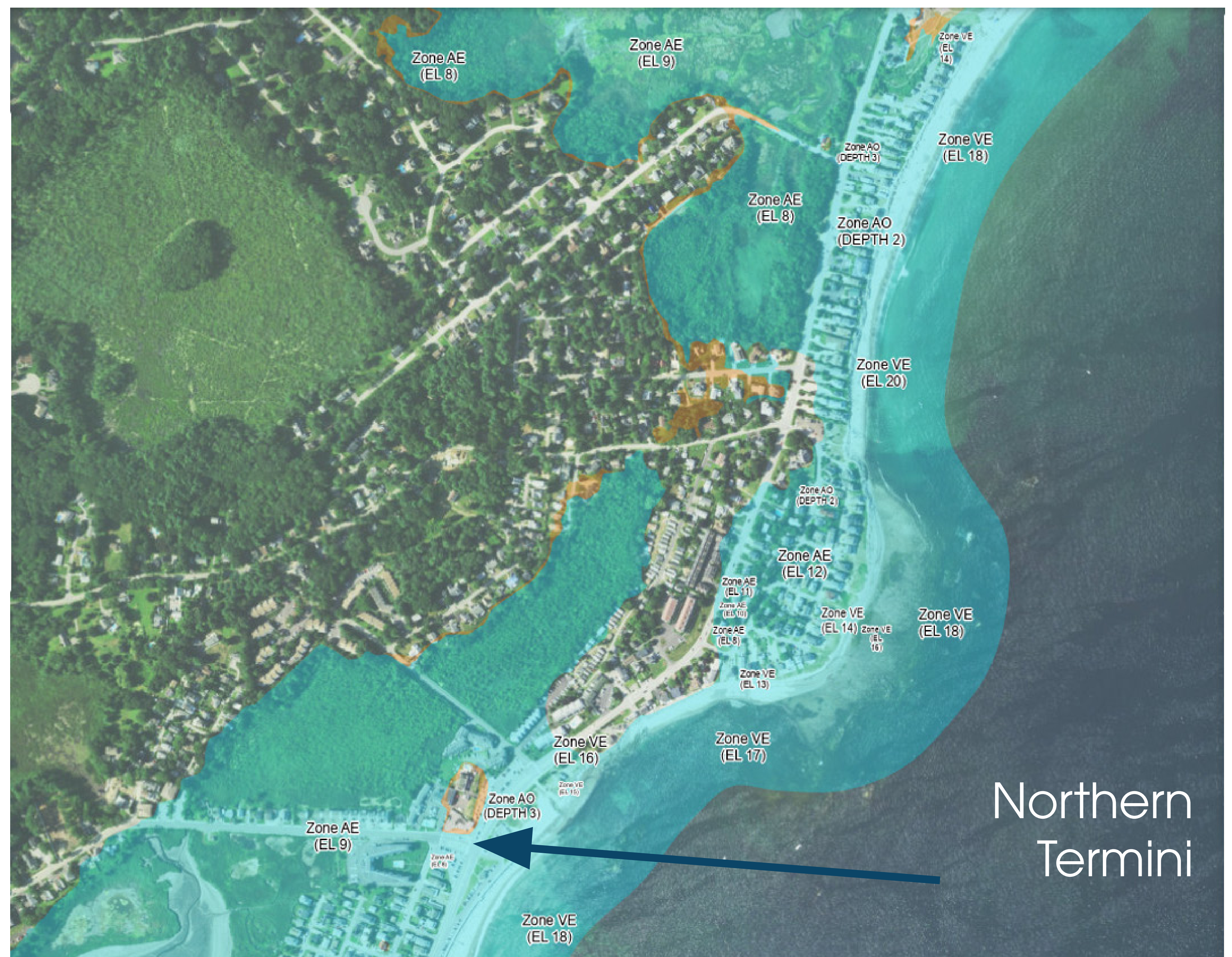
Hampton Beach State Park to G St



F St to 567 Ocean Blvd



567 Ocean Blvd to 13th St


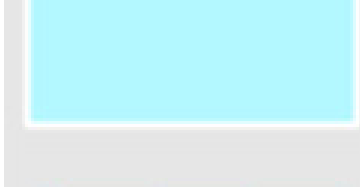



16th St to High St

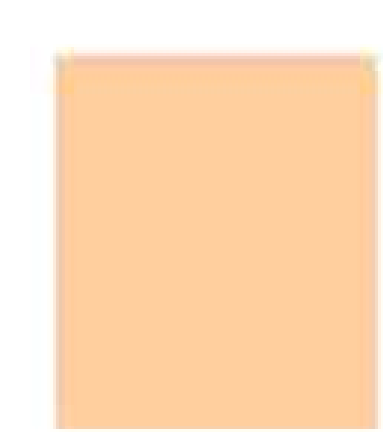

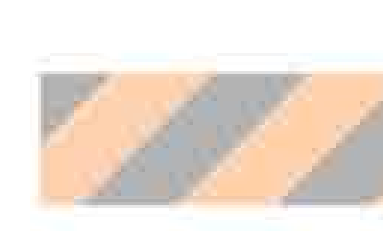

Legend

SEE FIS REPORT FOR DETAILED LEGEND AND INDEX MAP FOR FIRM PANEL LAYOUT

SPECIAL FLOOD HAZARD AREAS

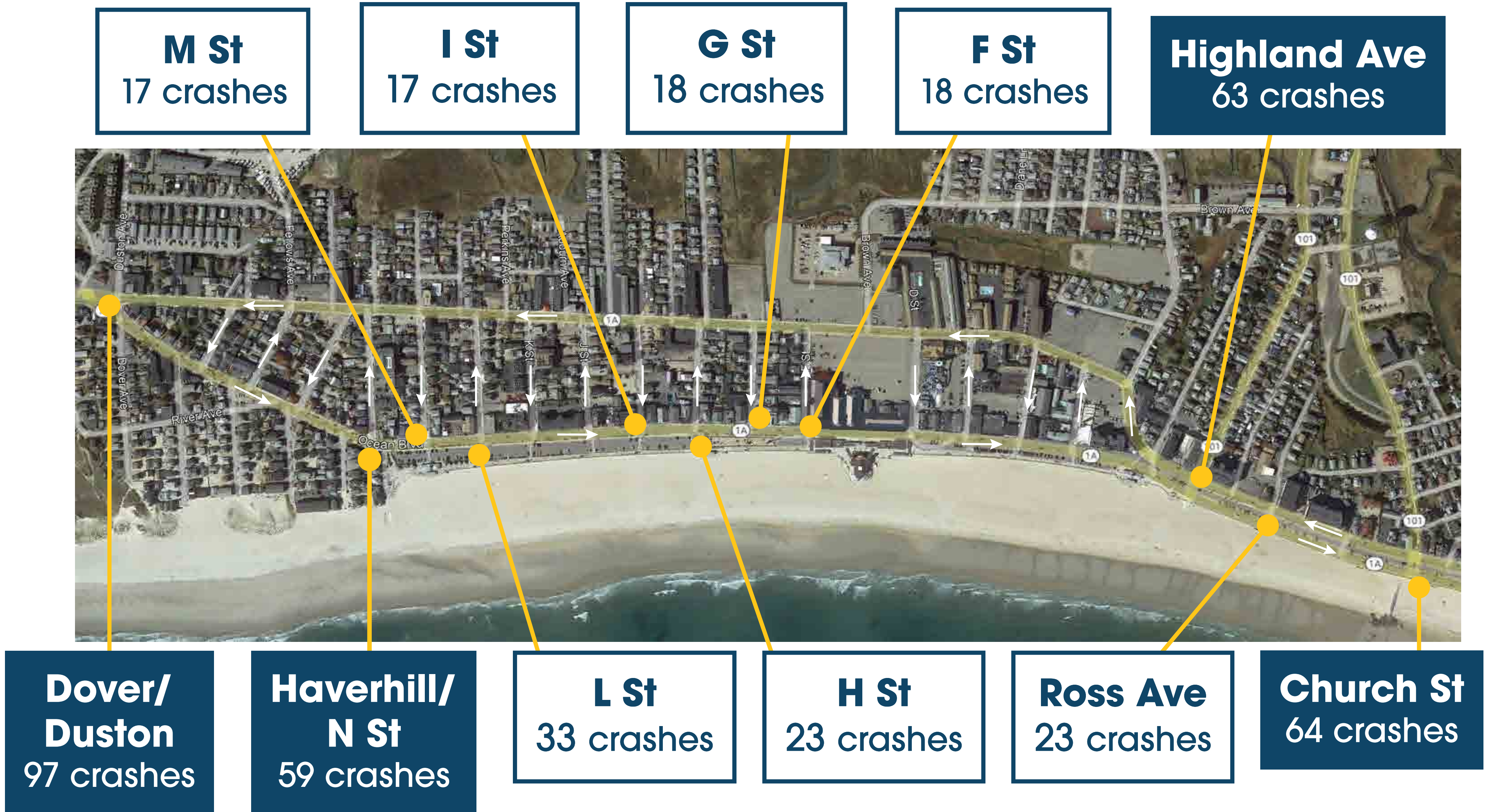
	Without Base Flood Elevation (BFE) Zone A, V, A99
	With BFE or Depth Zone AE, AO, AH, VE, AR
	Regulatory Floodway

OTHER AREAS OF HAZARD

	0.2% Annual Chance Flood Hazard, Areas of 1% annual chance flood with average depth less than one foot or with drainage areas of less than one square mile Zone X
	Future Conditions 1% Annual Chance Flood Hazard Zone X
	Area with Reduced Flood Risk due to Levee. See Notes. Zone X
	Area with Flood Risk due to Levee Zone D

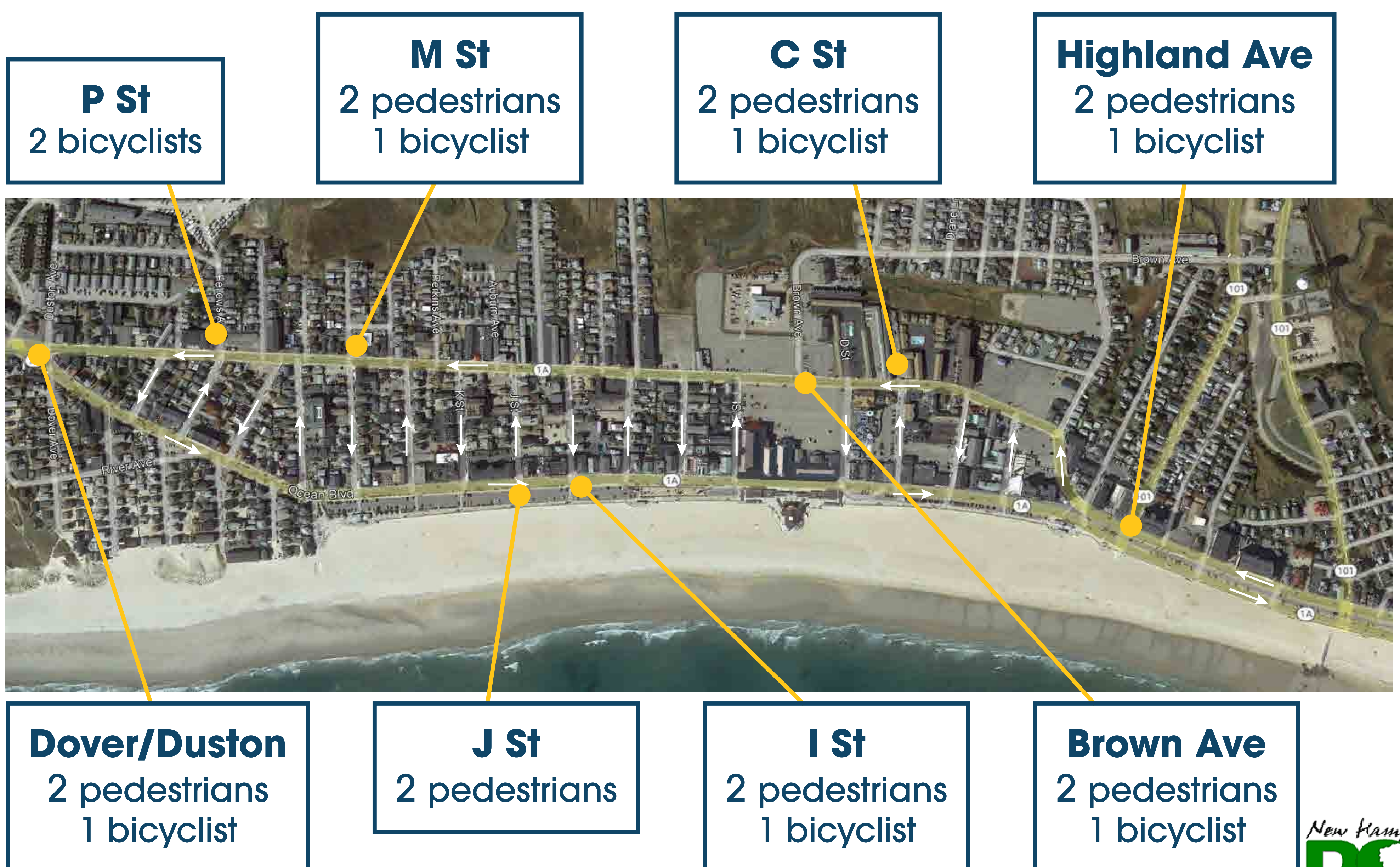
Intersection Crashes (2010-2019)

Ocean Blvd (432 Total)

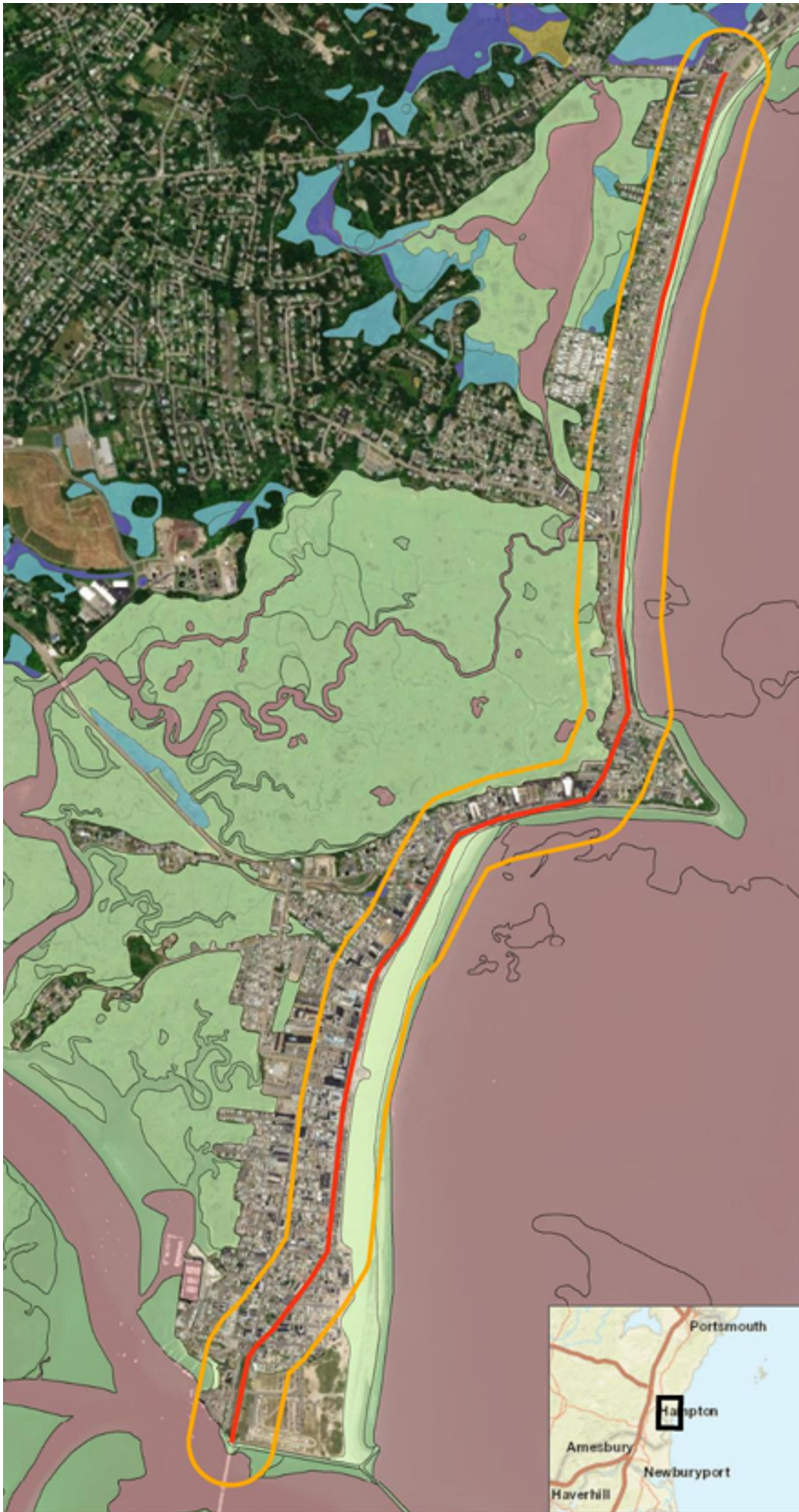


Pedestrian and Bicycle Crashes

Ocean Blvd (22 Total)

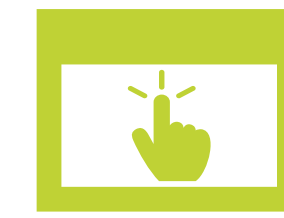


Wetlands



National Wetland
Inventory, 1977-2015

Project Schedule



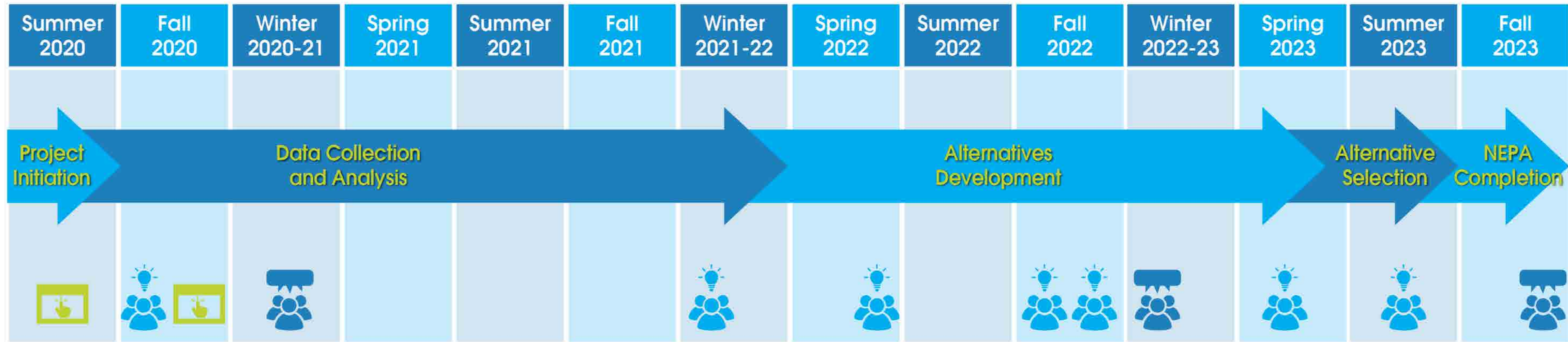
Survey/Wikimap



Public Meeting/Hearing



PAC Meeting



Next Steps

Spring 2023

- Cultural Resource Meeting #2
- Natural Resource Meeting #2
- PAC Meeting #6

Summer 2023

- PAC Meeting #7
- Public Information Meeting

Winter 2023

- Public Hearing

Stay Involved!



Visit the project website:

www.nh.gov/dot/projects/hampton40797



Email Tobey Reynolds:

Tobey.L.Reynolds@dot.nh.gov



Attend future Project Advisory committee and Public meetings