

# Keene 41590 NH Route 101 Improvements



## MSFI Meeting September 27, 2023



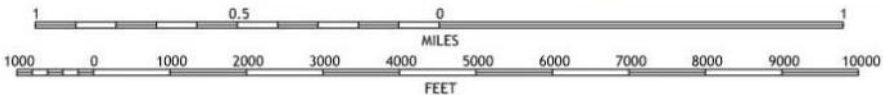
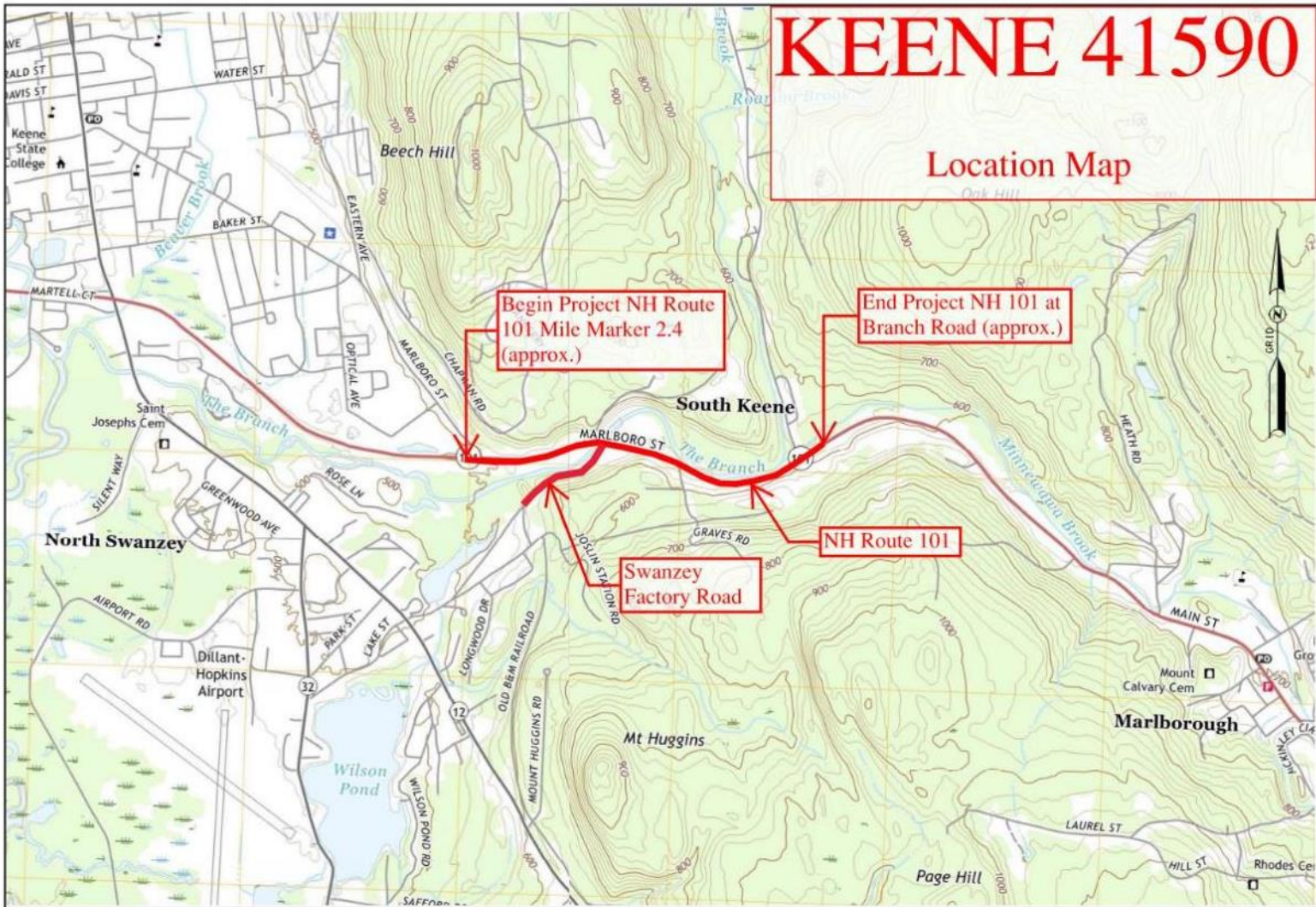
# Agenda

- Project Overview and Purpose
- Project Need
- Project Segment
- Resource Assessments to Date
- Public Outreach Efforts
- Schedule
- Questions/Comments

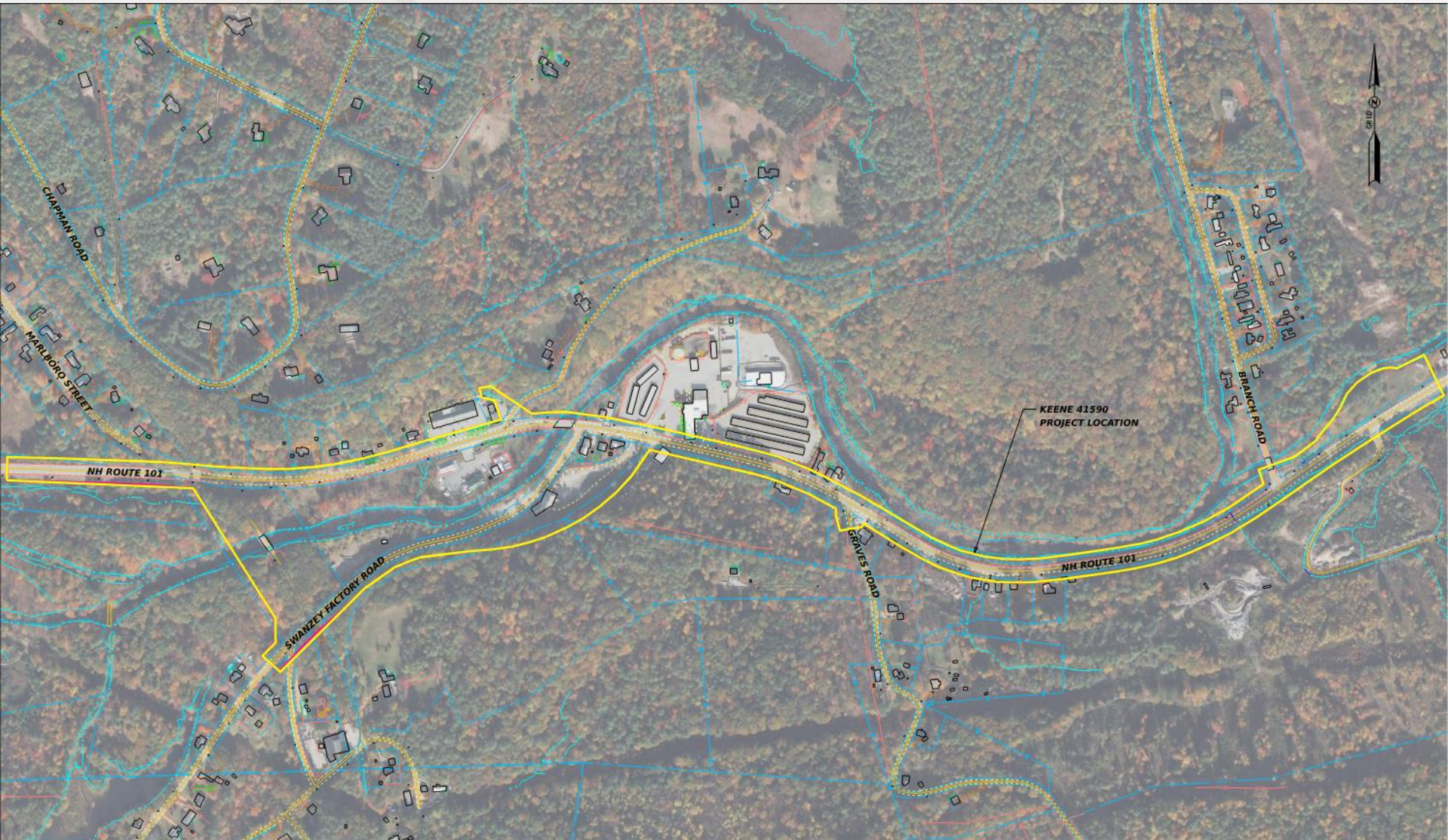
# Project Overview and Purpose

- Improve NH Route 101 beginning east of Optical Avenue to Branch Road (Approx. 1.0 miles)
  - Pavement Rehabilitation
  - Drainage
  - Bicycle and Pedestrian Accommodations
- Address NH Route 101 Bridge over Branch River
- Address Safety Issues at Swanzey Factory Road Intersection

# Project Location



# Route 101



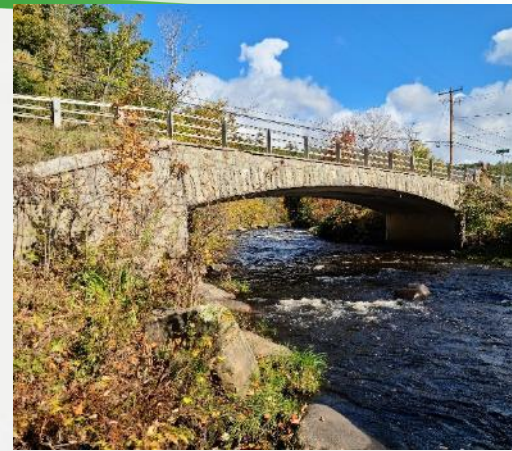
# Route 101 over Branch River

- Built 1933 – State's Red List
- Cast-in-place Concrete Rigid Frame
- Rehabilitation / Widening or Replacement

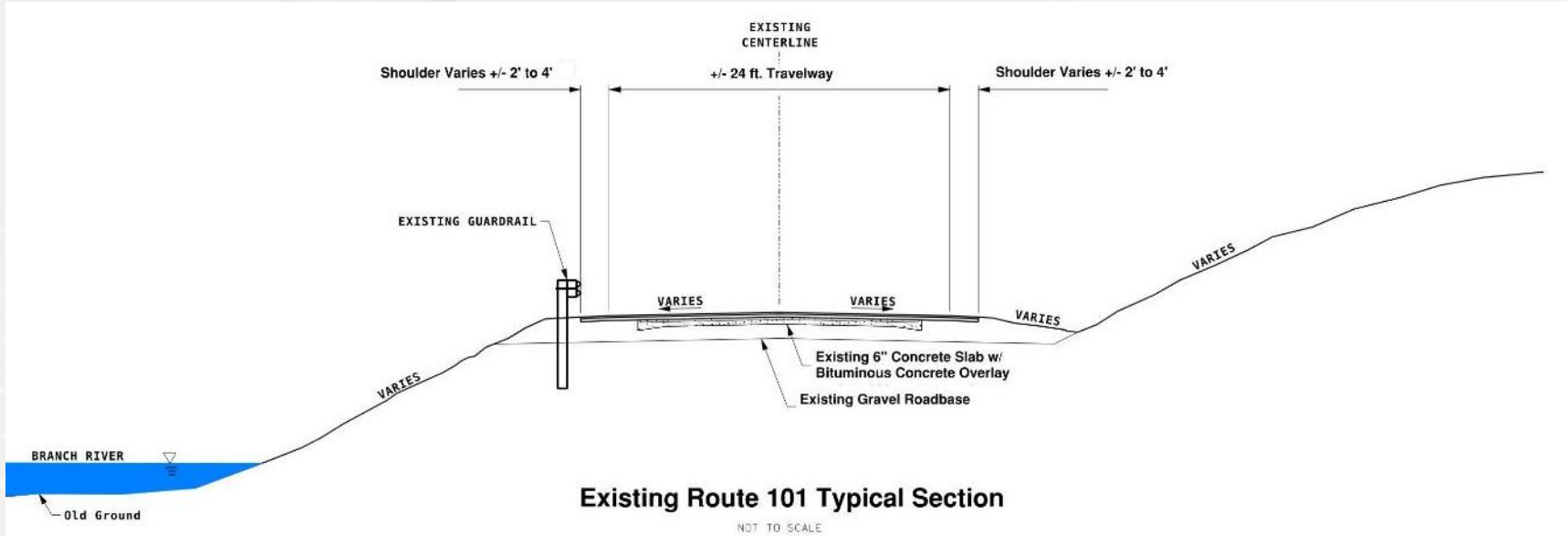


# Project Need

- Route 101 major east-west route
  - 1 of 2 in southern NH
  - Commerce, commuting, tourism
  - Gateway to City of Keene
- Poor pavement condition
- Poor drainage / no water quality treatment
- Branch River bridge on Red List
- Swanzey Factory Rd Intersection Safety Concerns
- Challenges for pedestrians and bicyclists

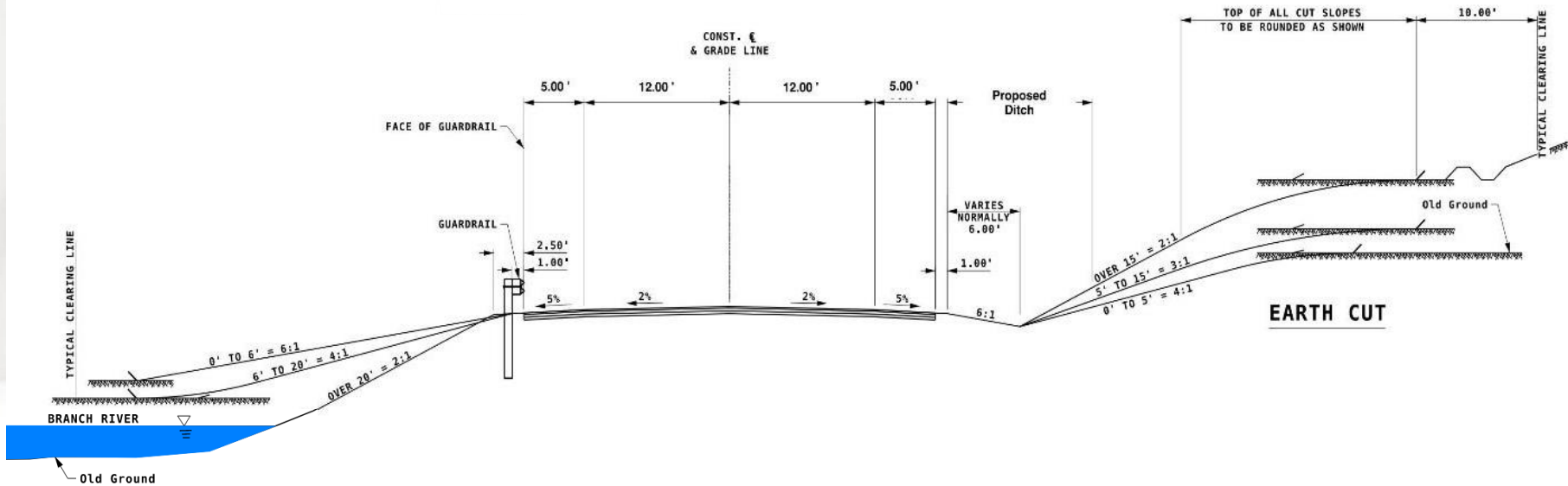


# Route 101 Typicals



Existing Route 101 Typical Section

NOT TO SCALE

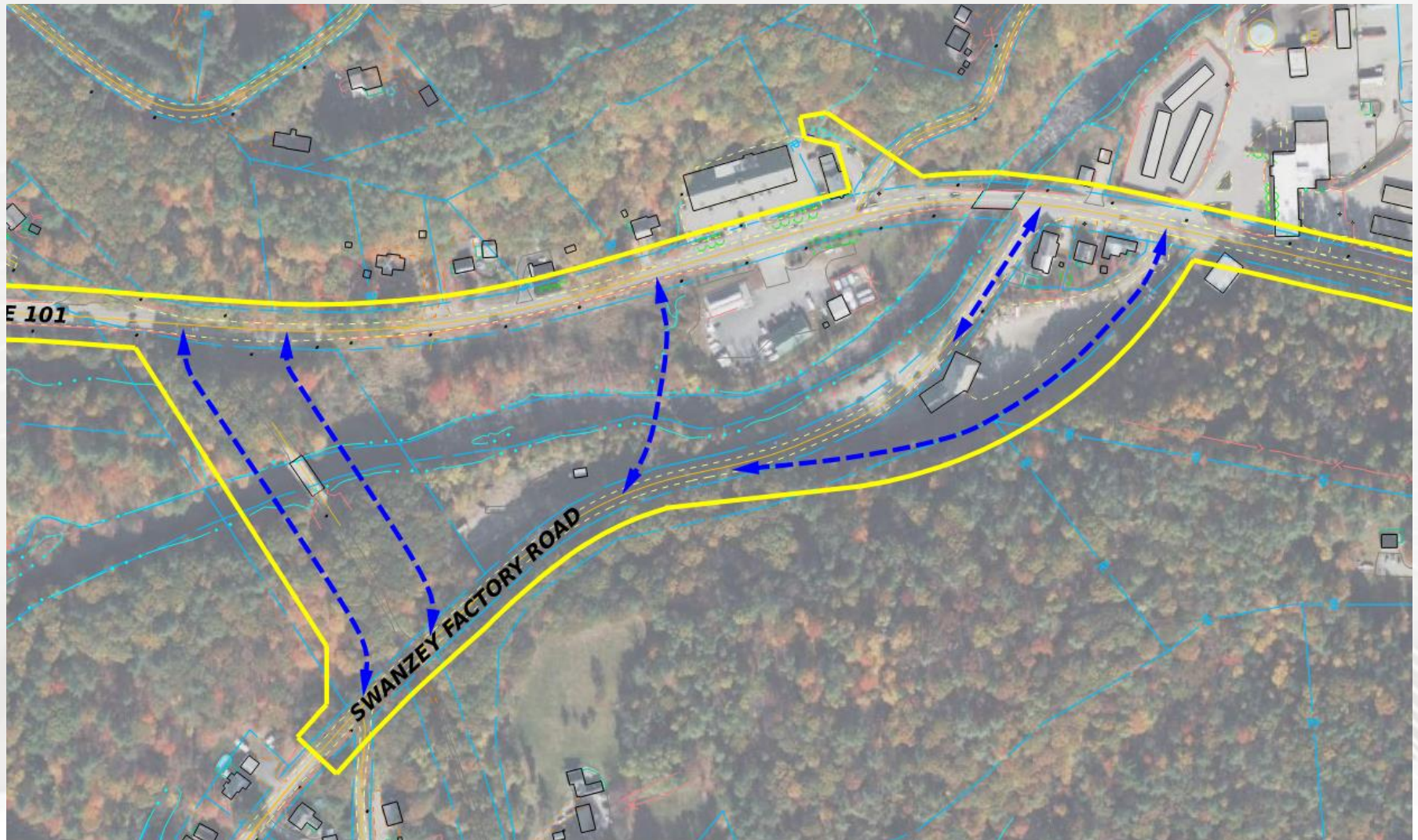


Proposed Route 101 Typical Section

NOT TO SCALE

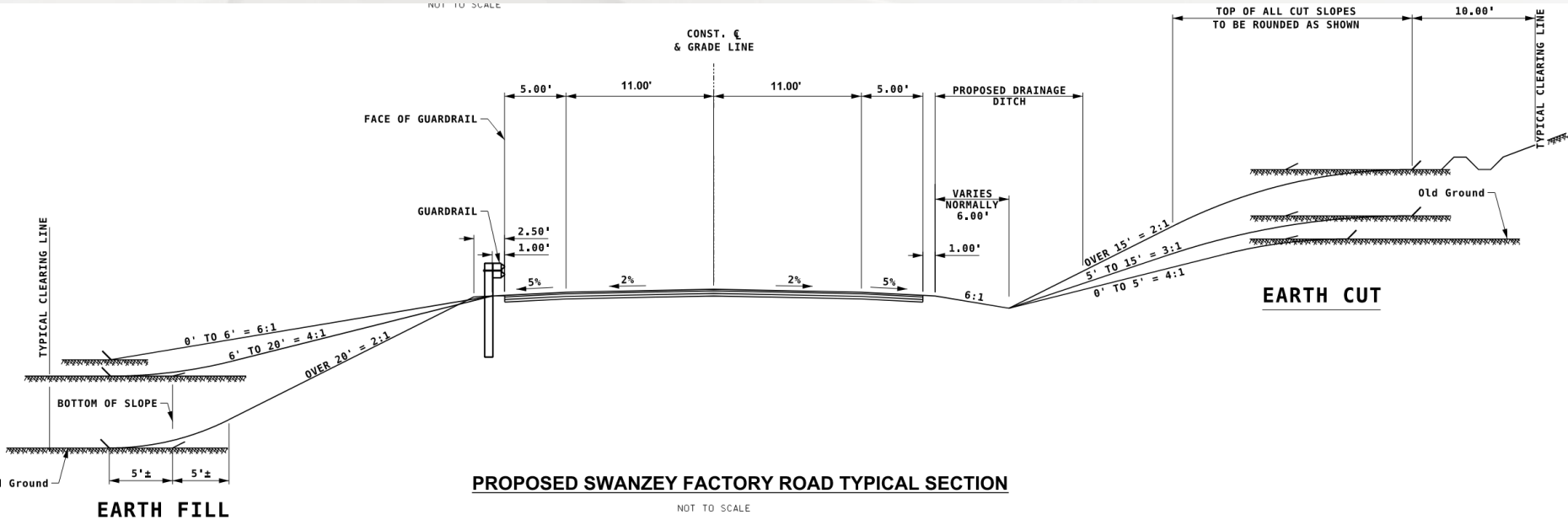


# Swanzey Factory Road Alternatives

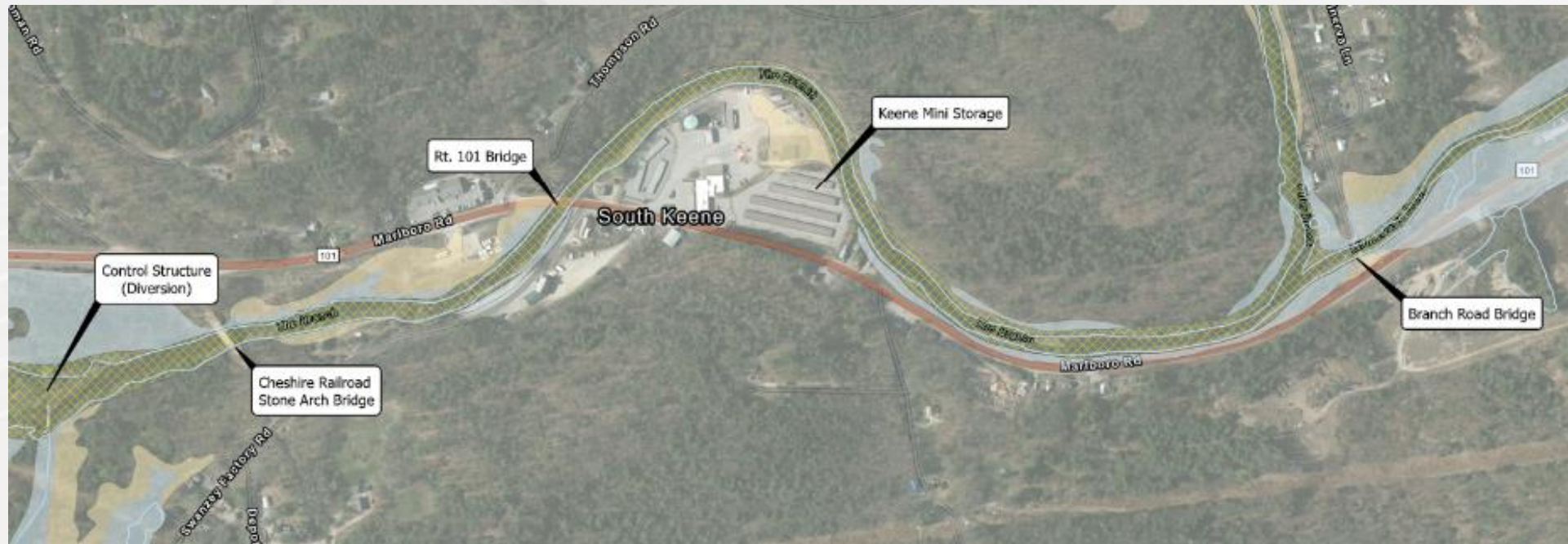


# Swanzey Factory Road Typical

NOT TO SCALE



# Branch River Floodplain / Floodway



- 2006 FIS
- Project area w/i regulated floodway / floodplain
- CHA replicating FEMA existing model
- Hydraulic analysis of alternatives
- Compensatory Storage / mitigation

# Water Quality

- Existing untreated run-off discharges to Branch River
- Proposed design will:
  - Improve water quality / stormwater treatment
    - NHDES / City of Keene Water Quality Standards
    - City of Keene is not an MS4 Community
  - Strive to treat all stormwater run-off
    - On-site & Off-site BMPs
  - Look to separate Tier 1 stream from closed drainage



Inlet



Outlet

# Resource Assessments to Date

- Natural Resources
  - Wetlands / Shoreland
  - Invasive Species
  - USFWS IPaC
    - Northern long-eared bat
    - Monarch butterfly
  - NH Natural Heritage Bureau
    - No Recorded Occurrences
  - Stream Crossings (*in progress*)
  - Essential Fish Habitat
  - Hazardous Materials / Contamination
  - Sections 4(f)
    - Cheshire Rail Trail
    - Stone Arch Bridge
    - Potential Historic Properties
  - Section 6(f)
    - No LWCF Properties



Photo source: USFWS  
(<https://www.fws.gov/media/tricolored-bat>)

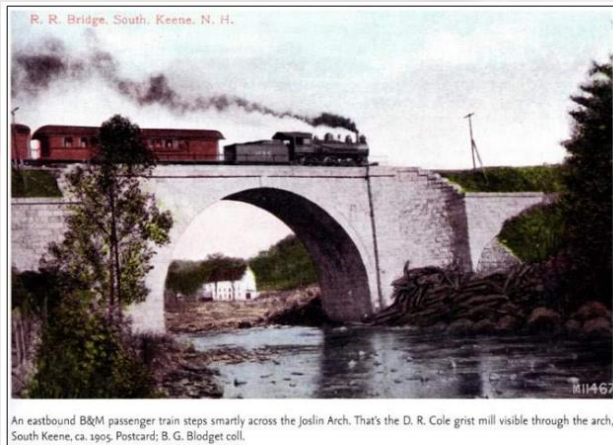


# Resource Assessments to Date

- Cultural Resources

- Historic Properties / Architecture Inventory

- Stone Arch Bridge - National Registry Listed
- Route 101 Bridge over the Branch River – National Registry Eligible
- Other properties being evaluated



- Phase 1A and 1B Archeological Surveys

- Sensitive areas and findings within the project corridor

# Key Public Outreach Efforts



- Public Involvement Plan
- Outreach Letters sent out 9/5/23
  - 42 entities in Keene;
  - 7 entities in Swanzey.
- City Project Working Group
- Public officials meetings
- Public information meetings
- Project specific website
- Agency consultation meetings
- Public comment period on the NEPA document
- Public Hearing

# Project Schedule

- Preliminary Engineering / NEPA 2023-2025
  - Wrapping up survey / basemapping (2023)
  - Completing environmental and cultural resource field work (2023)
  - Preliminary design alternatives
  - Public meetings
- Public Hearing in 2025
- Final design to take place from 2026-2028



# Questions and Comments

Visit

<https://www.dot.nh.gov/projects-plans-and-programs/project-center/keene-41590>

for more information on the project

## Thank You !