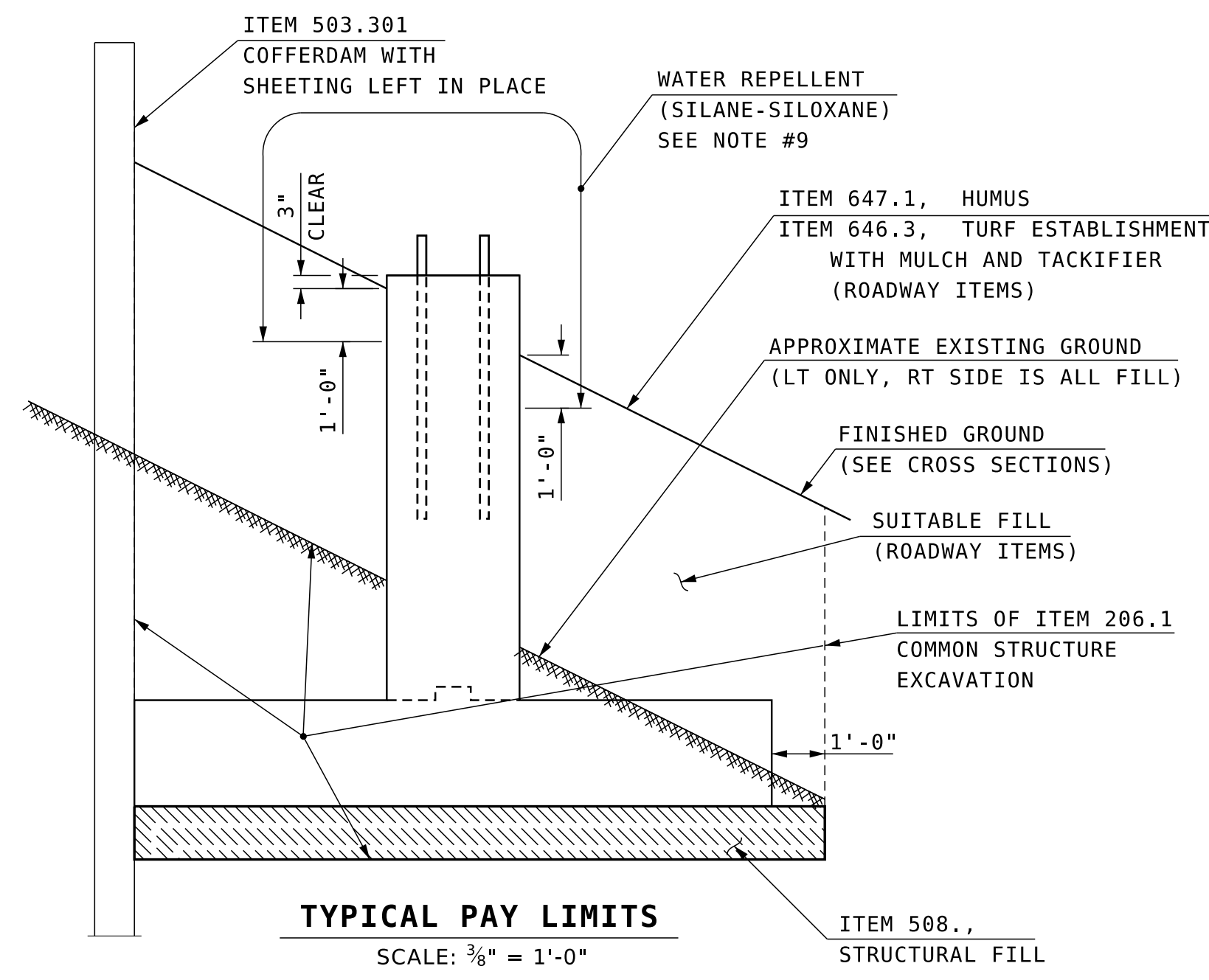


SIGN FOOTING MASONRY & REINFORCEMENT FOR ITEM NO. 615.10001

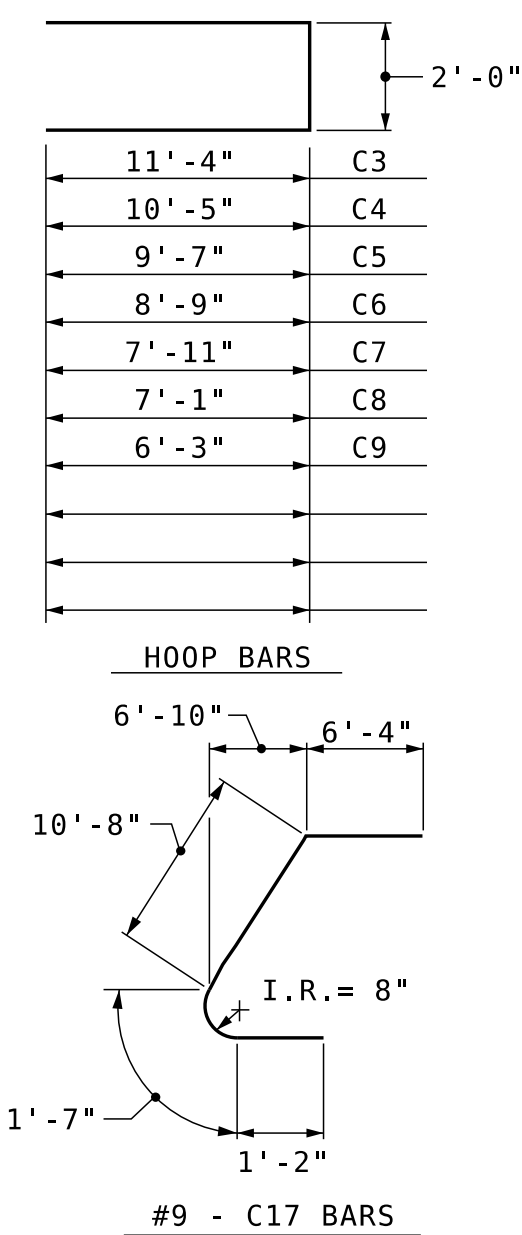


SIGN FOOTING NOTES

- FOR THE INSTALLATION AND PRETENSIONING OF ANCHOR RODS, SEE SPECIAL PROVISION AMENDMENT TO SECTION 615, TRAFFIC SIGNS.
- THERE ARE 2 FOOTINGS OF THIS CONFIGURATION REQUIRED AND THE QUANTITIES GIVEN ARE TOTALED FOR BOTH FOOTINGS.
- ALL REINFORCING STEEL SHALL HAVE 3" MINIMUM CLEAR COVER FROM CONCRETE SURFACES.
- FOOTINGS SHALL BE BACKFILLED TO FINAL GROUND BEFORE THE SIGN SUPPORT STRUCTURE IS INSTALLED.
- FINAL GROUND ELEVATIONS SHALL BE TAKEN FROM THE ROADWAY CROSS SECTIONS. IF ACTUAL FINAL GROUND ELEVATIONS DIFFER BY MORE THAN 1'-0", THEN A COMPLETE REDESIGN OF THE SIGN FOOTING WILL BE REQUIRED.
- THE LEFT FOOTING DESIGN SIGN AREA IS 442.4 SF. THE RIGHT FOOTING DESIGN SIGN AREA IS 504.0 SF. BOTH DESIGN SIGN AREAS INCLUDED A 30% INCREASE.
- STAINLESS STEEL STD. GR. WIRE CLOTH, 1/4" MAX. OPENING WITH MIN. WIRE DIA. OF AWG NO. 16 WITH 2" LAP. SECURE WITH 3/4" STAINLESS STEEL BANDING AFTER ANCHOR RODS ARE FULLY TIGHTENED AND TESTED. (SUBSIDIARY TO ITEM 615.XX)
- ALLOWABLE BEARING PRESSURE FOR THE FOUNDATIONS = 3 KSF LT, 3 KSF RT. SEE THE GEOTECHNICAL REPORT FOR FURTHER INFORMATION.
- WATER REPELLENT (SILANE-SILOXANE) SHALL BE APPLIED TO ALL EXPOSED CONCRETE SURFACES TO 1'-0" BELOW FILL LINES IN ACCORDANCE WITH SECTION 534. ALL COSTS SUBSIDIARY TO ITEM 520.2.
- NO GROUT SHALL BE PLACED BETWEEN THE FOUNDATION AND BOTTOM OF THE BASE PLATE.

SIGN FOOTING REINFORCING SCHEDULE

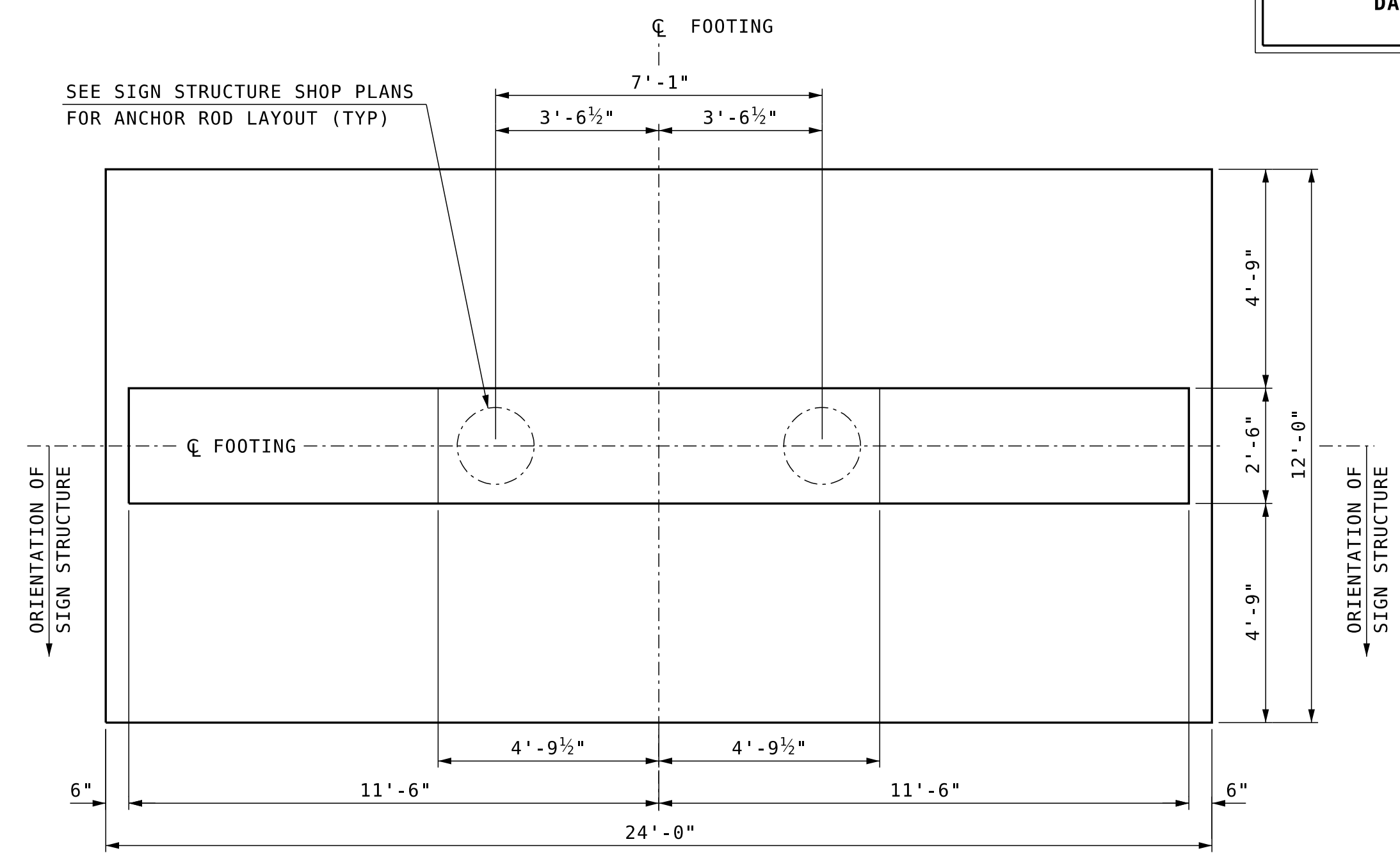
MARK	SIZE	NO.	UNBENT LENGTH	TYPE
C1	#7	48	23'-6"	STRAIGHT
C2	#7	96	11'-6"	STRAIGHT
C3	#4	4	24'-8"	HOOP
C4	#4	4	22'-10"	HOOP
C5	#4	4	21'-2"	HOOP
C6	#4	4	19'-6"	HOOP
C7	#4	4	17'-10"	HOOP
C8	#4	4	16'-2"	HOOP
C9	#4	4	14'-6"	HOOP
C10	#7	40	9'-6"	STRAIGHT
C11	#4	8	2'-7"	STRAIGHT
C12	#4	8	3'-10"	STRAIGHT
C13	#4	8	5'-0"	STRAIGHT
C14	#4	8	6'-2"	STRAIGHT
C15	#4	8	7'-5"	STRAIGHT
C16	#4	8	8'-7"	STRAIGHT
C17	#9	20	19'-9"	BENT & CURVED



REINFORCING STEEL IN SCHEDULE IS FOR 2 SIGN FOOTINGS. TOTAL WEIGHT OF REINFORCING STEEL IN TABLE IS 7226 lb. REINFORCING STEEL SHALL BE GRADE 60

SAMPLE PLAN

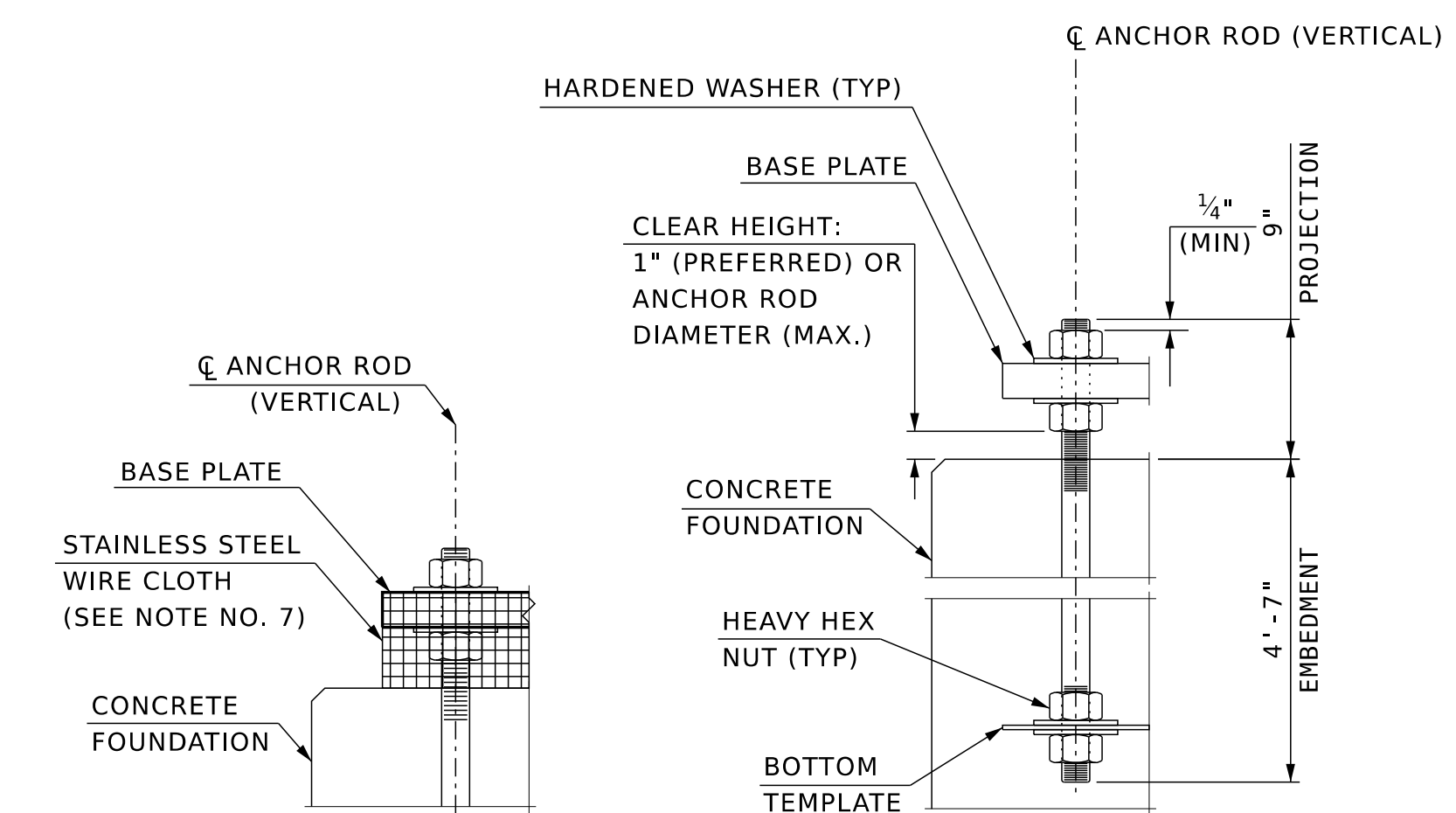
DATE: 07/2023



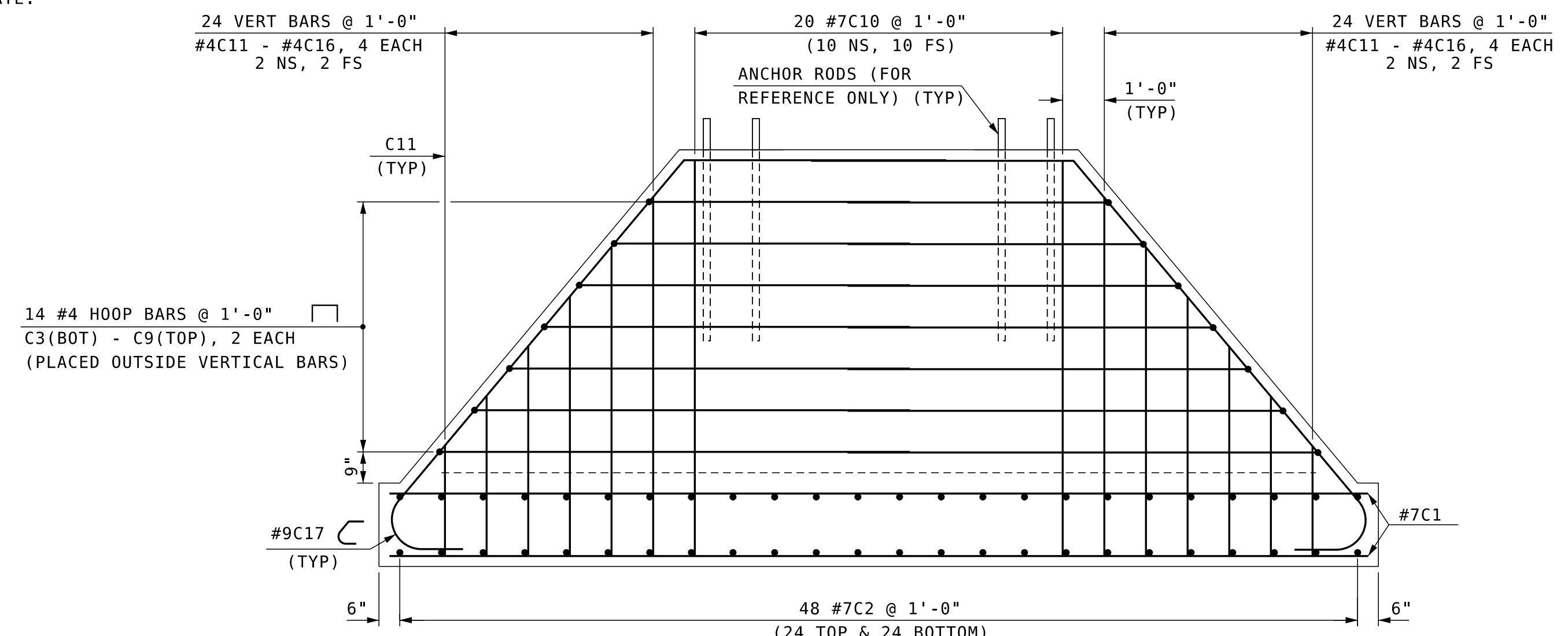
SIGN FOOTING MASONRY PLAN
SCALE: 3/8" = 1'-0"

ITEM NO.	ITEM DESCRIPTION	QUANTITY	UNIT
206.1	COMMON STRUCTURE EXCAVATION	85	CY
503.301	COFFERDAMS WITH SHEETING LEFT IN PLACE	2	U
508	STRUCTURAL FILL	37	CY
520.2	CONCRETE CLASS B	66.8	CY
544.1	REINFORCING STEEL (ROADWAY)	7226	LB

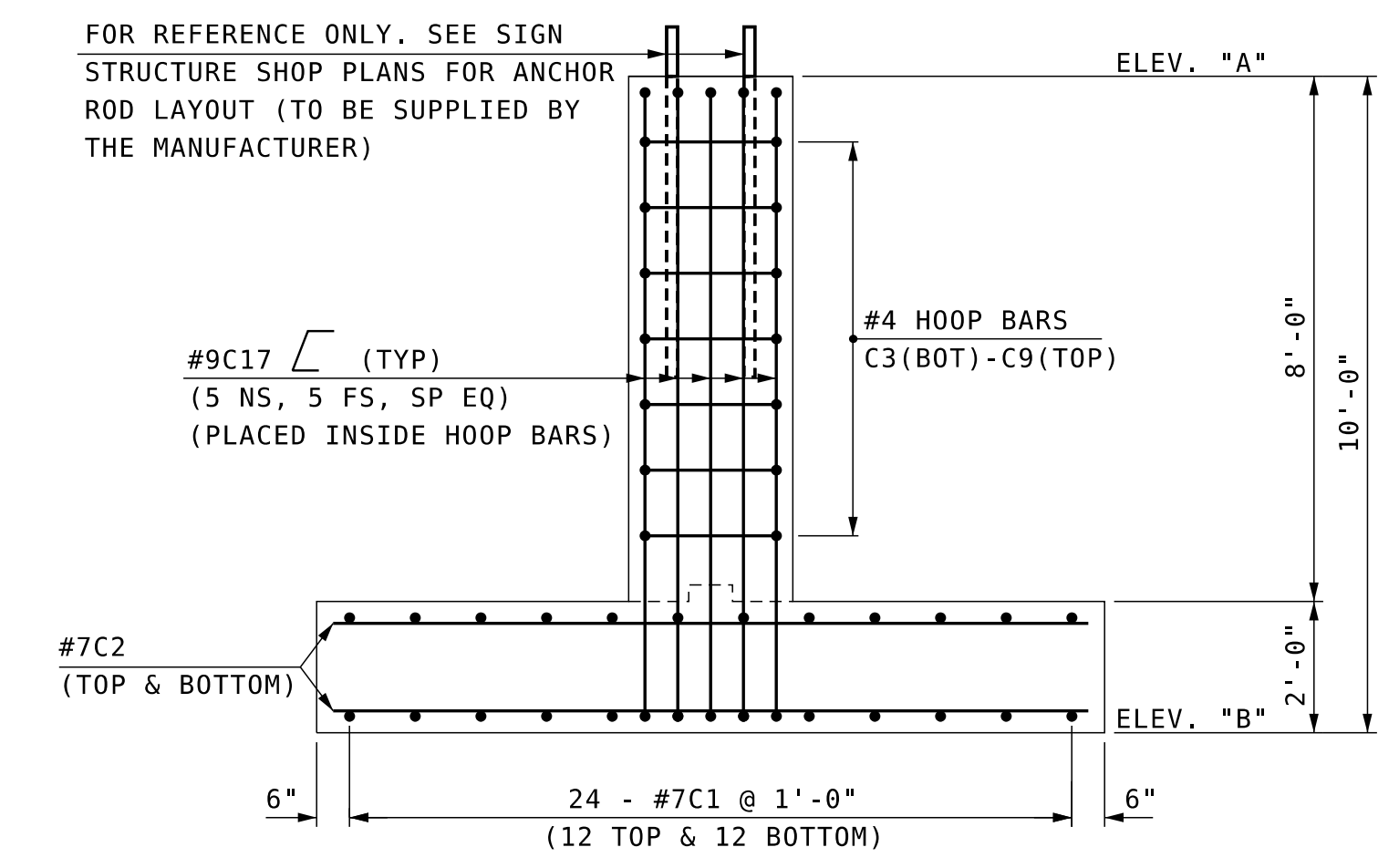
STATION	OFFSET	ELEV "A"	ELEV "B"
172+00	LT 80	261	251
172+00	RT 80	258	248



SCREEN DETAIL NOT TO SCALE
ANCHOR ROD DETAIL NOT TO SCALE



REINFORCING - SIDE ELEVATION
SCALE: 3/8" = 1'-0"



REINFORCING - END ELEVATION
SCALE: 3/8" = 1'-0"

FOR REFERENCE ONLY. SEE SIGN STRUCTURE SHOP PLANS FOR ANCHOR ROD LAYOUT (TO BE SUPPLIED BY THE MANUFACTURER)

STATE OF NEW HAMPSHIRE						BRIDGE SHEET	
DEPARTMENT OF TRANSPORTATION * BUREAU OF BRIDGE DESIGN						OF	
TOWN	ROCHESTER	BRIDGE NO.	N/A	STATE PROJECT	10620L		
LOCATION						NH ROUTE 16 - 400' SOUTH OF EXIT 15 NB OFF RAMP	
OVERHEAD SIGN STRUCTURE FOOTING						105-2	
REVISIONS AFTER PROPOSAL		BY	DATE	BY	DATE	FILE NUMBER	
		DESIGNED	DDT 01/11	CHECKED	WPS 01/11	105-2	
		DRAWN	DDT 01/11	CHECKED	WPS 01/11		
		QUANTITIES	DDT 01/11	CHECKED	WPS 01/11		
		ISSUE DATE		FEDERAL PROJECT NO.		SHEET NO.	TOTAL SHEETS
		REV. DATE				3	3

INV #: 389-SPTPK-0015-NS20.9

SUBDIRECTORY	.DGN LOCATOR	SHEET SCALE
ROCHESTER/10620L	615.1000X	AS NOTED