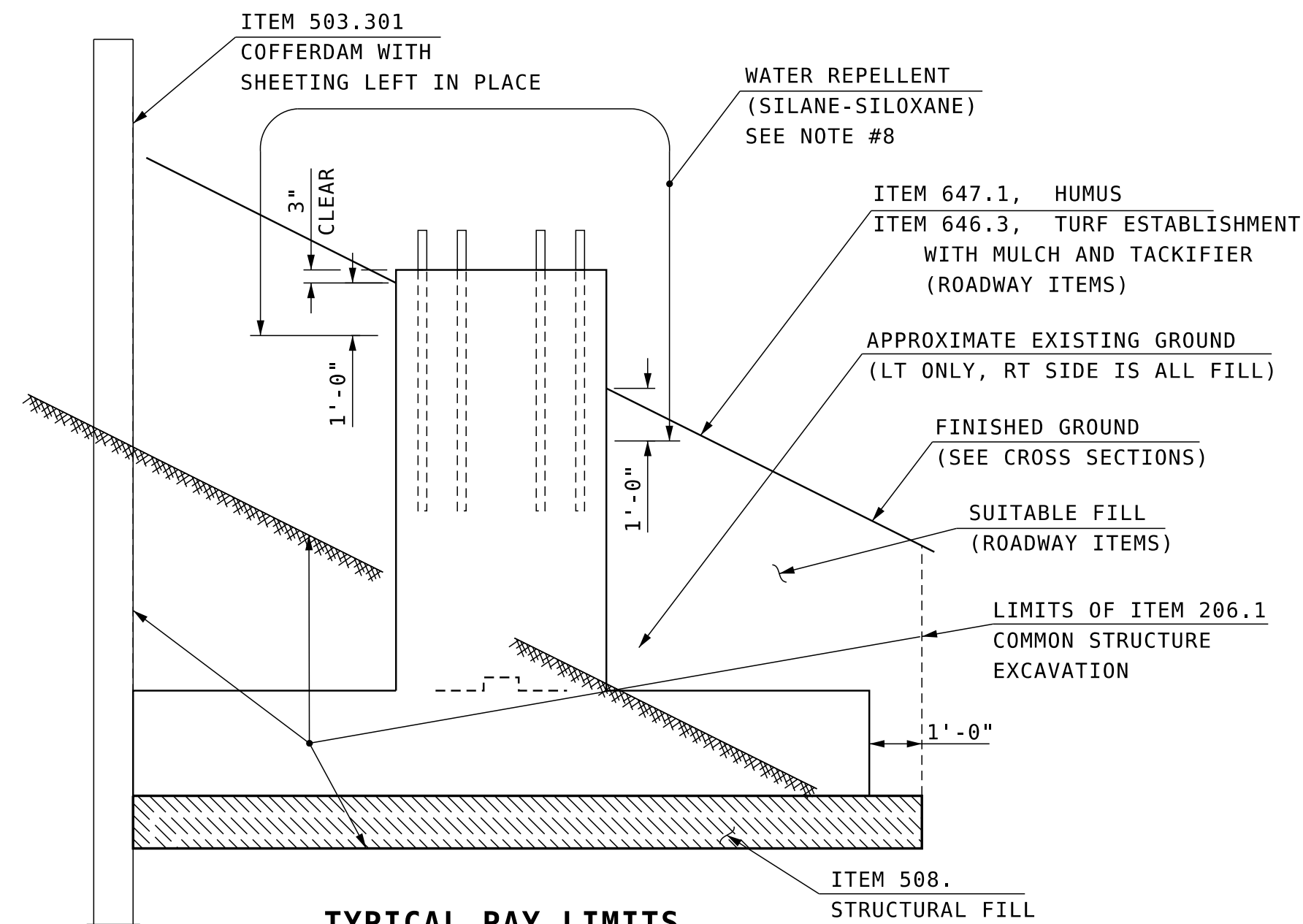


# SIGN FOOTING MASONRY & REINFORCEMENT FOR ITEM NO. 615.20001



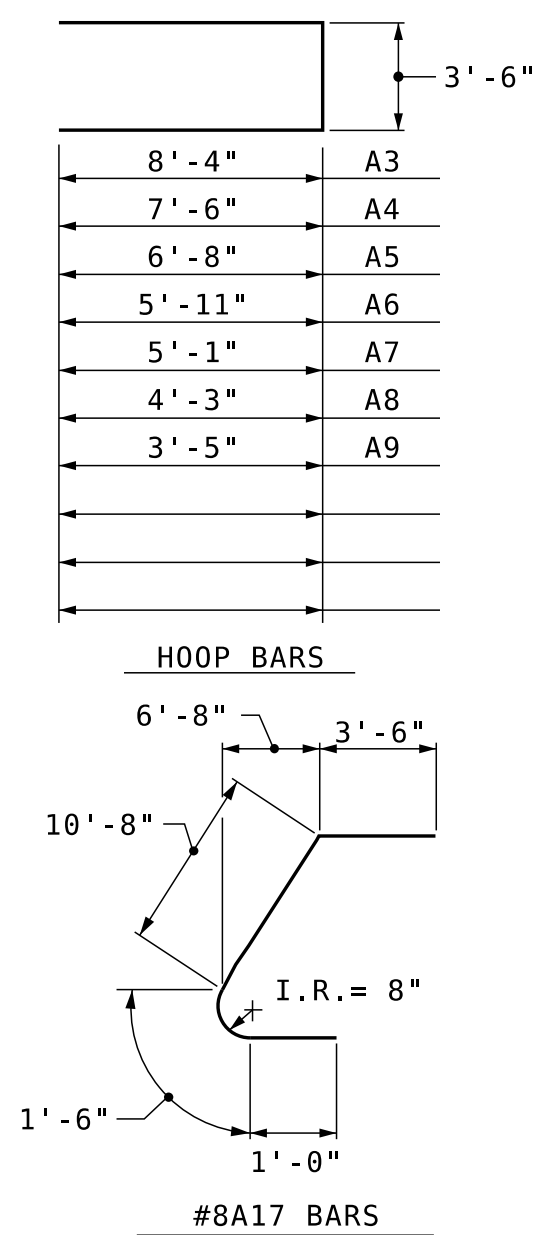
**TYPICAL PAY LIMITS**  
SCALE: 3/8" = 1'-0"

### SIGN FOOTING NOTES

- FOR THE INSTALLATION AND PRETENSIONING OF ANCHOR RODS, SEE SPECIAL PROVISION AMENDMENT TO SECTION 615, TRAFFIC SIGNS.
- ALL REINFORCING STEEL SHALL HAVE 3" MINIMUM CLEAR COVER FROM CONCRETE SURFACES.
- FOOTING SHALL BE BACKFILLED TO FINAL GROUND BEFORE THE SIGN SUPPORT STRUCTURE IS INSTALLED.
- FINAL GROUND ELEVATIONS SHALL BE TAKEN FROM THE ROADWAY CROSS SECTIONS. IF ACTUAL FINAL GROUND ELEVATIONS DIFFER BY MORE THAN 1'-0", THEN A COMPLETE REDESIGN OF THE SIGN FOOTING WILL BE REQUIRED.
- THE FOOTING DESIGN SIGN AREA IS 442.4 SF., AND INCLUDES A 30% AREA INCREASE.
- STAINLESS STEEL STD. GR. WIRE CLOTH, 1/4" MAX. OPENING WITH MIN. WIRE DIA. OF AWG NO. 16 WITH 2" LAP. SECURE WITH 3/4" STAINLESS STEEL BANDING AFTER ANCHOR RODS ARE FULLY TIGHTENED AND TESTED. (SUBSIDIARY TO ITEM 615.XX)
- ALLOWABLE BEARING PRESSURE FOR THE FOUNDATION = 3 KSF SEE THE GEOTECHNICAL REPORT FOR FURTHER INFORMATION.
- WATER REPELLENT (SILANE-SILOXANE) SHALL BE APPLIED TO ALL EXPOSED CONCRETE SURFACES TO 1'-0" BELOW FILL LINES IN ACCORDANCE WITH SECTION 534. ALL COSTS SUBSIDIARY TO ITEM 520.2.
- NO GROUT SHALL BE PLACED BETWEEN THE FOUNDATION AND BOTTOM OF THE BASE PLATE.

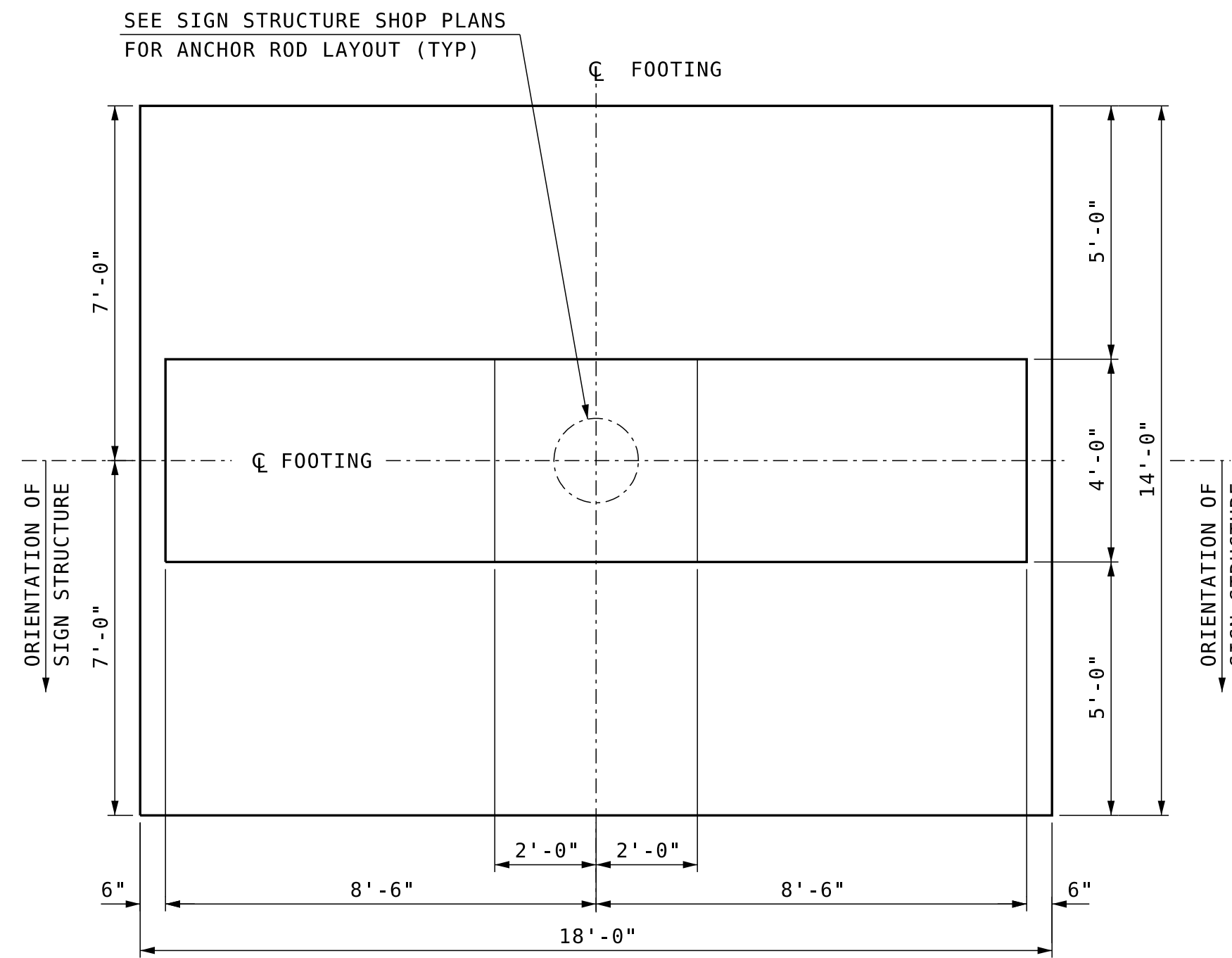
### SIGN FOOTING REINFORCING SCHEDULE

MARK	SIZE	NO.	UNBENT LENGTH	TYPE
A1	#6	28	17'-6"	STRAIGHT
A2	#6	36	13'-6"	STRAIGHT
A3	#4	2	20'-2"	HOOP
A4	#4	2	18'-6"	HOOP
A5	#4	2	16'-10"	HOOP
A6	#4	2	15'-4"	HOOP
A7	#4	2	13'-8"	HOOP
A8	#4	2	12'-0"	HOOP
A9	#4	2	10'-4"	HOOP
A10	#7	10	9'-6"	STRAIGHT
A11	#4	4	2'-8"	STRAIGHT
A12	#4	4	3'-11"	STRAIGHT
A13	#4	4	5'-1"	STRAIGHT
A14	#4	4	6'-4"	STRAIGHT
A15	#4	4	7'-7"	STRAIGHT
A16	#4	4	8'-10"	STRAIGHT
A17	#8	12	16'-8"	BENT & CURVED

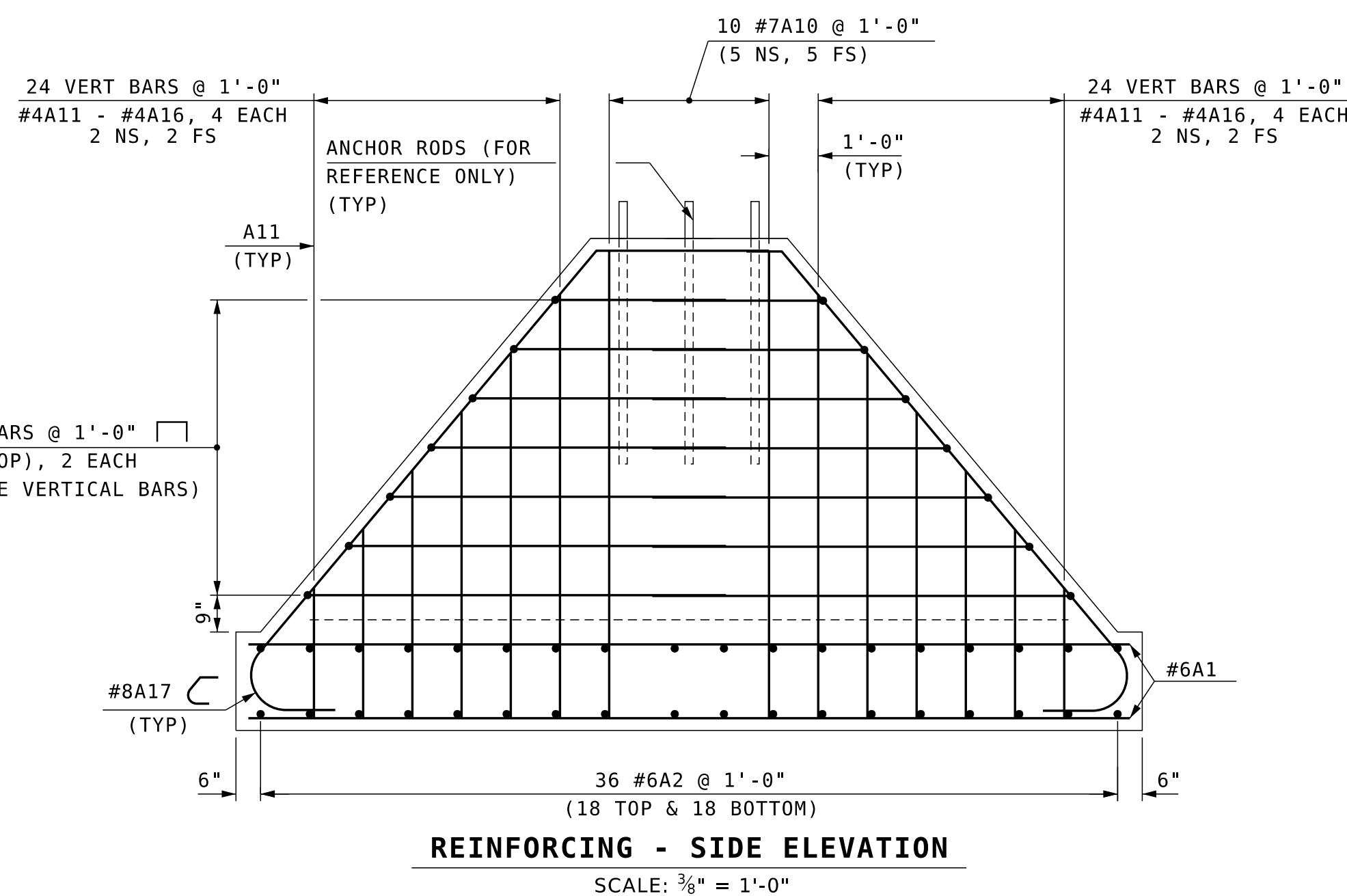


REINFORCING STEEL IN SCHEDULE IS FOR 1 SIGN FOOTING. TOTAL WEIGHT OF REINFORCING STEEL IN TABLE IS 2429 lb.

REINFORCING STEEL SHALL BE GRADE 60



**SIGN FOOTING MASONRY PLAN**  
SCALE: 3/8" = 1'-0"



**REINFORCING - SIDE ELEVATION**  
SCALE: 3/8" = 1'-0"

### SAMPLE PLAN

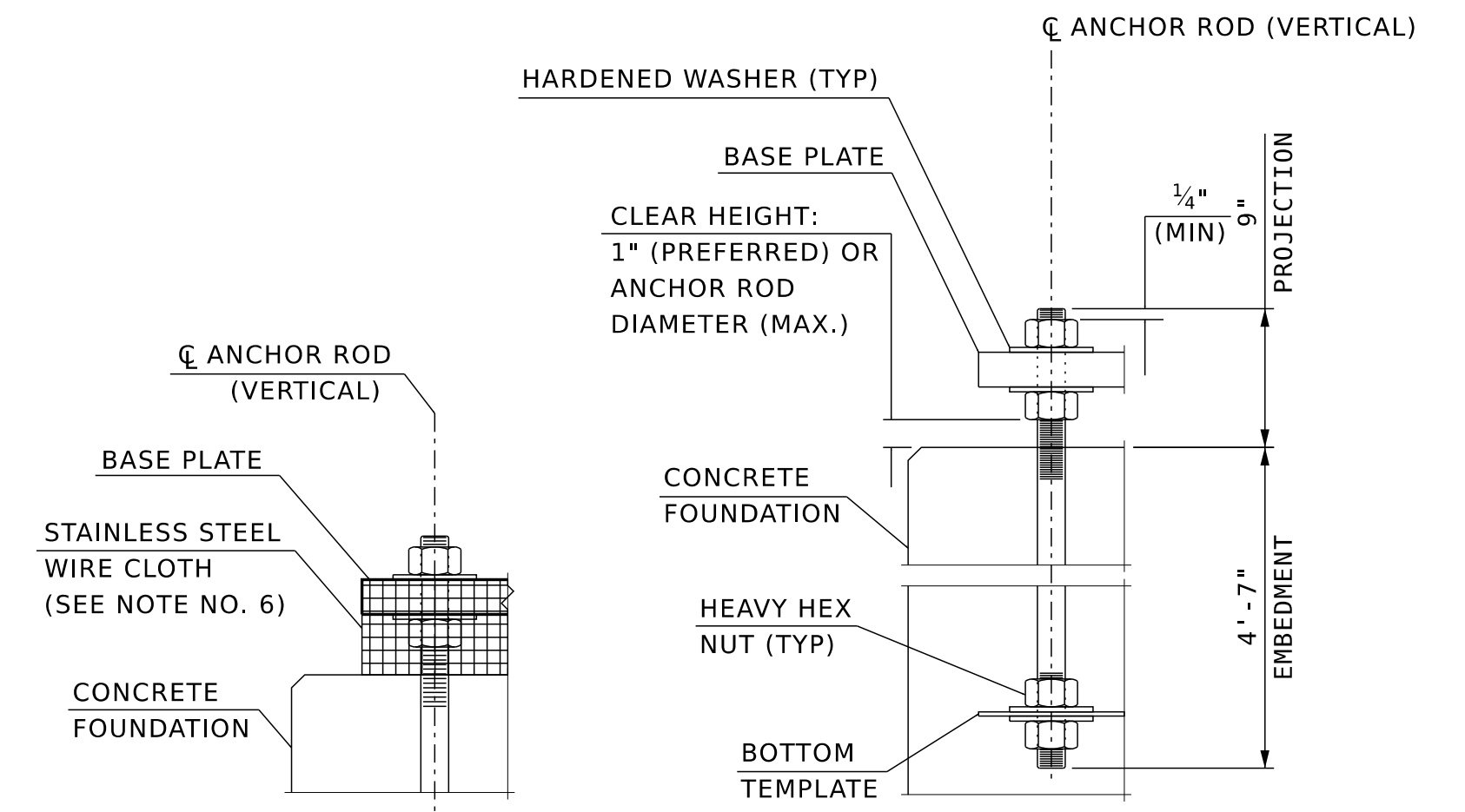
DATE: 07/2023

### QUANTITY TABLE (1 FOOTING)

ITEM NO.	ITEM DESCRIPTION	QUANTITY	UNIT
206.1	COMMON STRUCTURE EXCAVATION	152	CY
503.301	COFFERDAMS WITH SHEETING LEFT IN PLACE	1	U
508	STRUCTURAL FILL	14	CY
520.2	CONCRETE CLASS B	31.1	CY
544.1	REINFORCING STEEL (ROADWAY)	2429	LB

### SIGN FOOTING ELEVATION TABLE

STATION	OFFSET	ELEV "A"	ELEV "B"
3094+00	LT 46	131.86	121.86

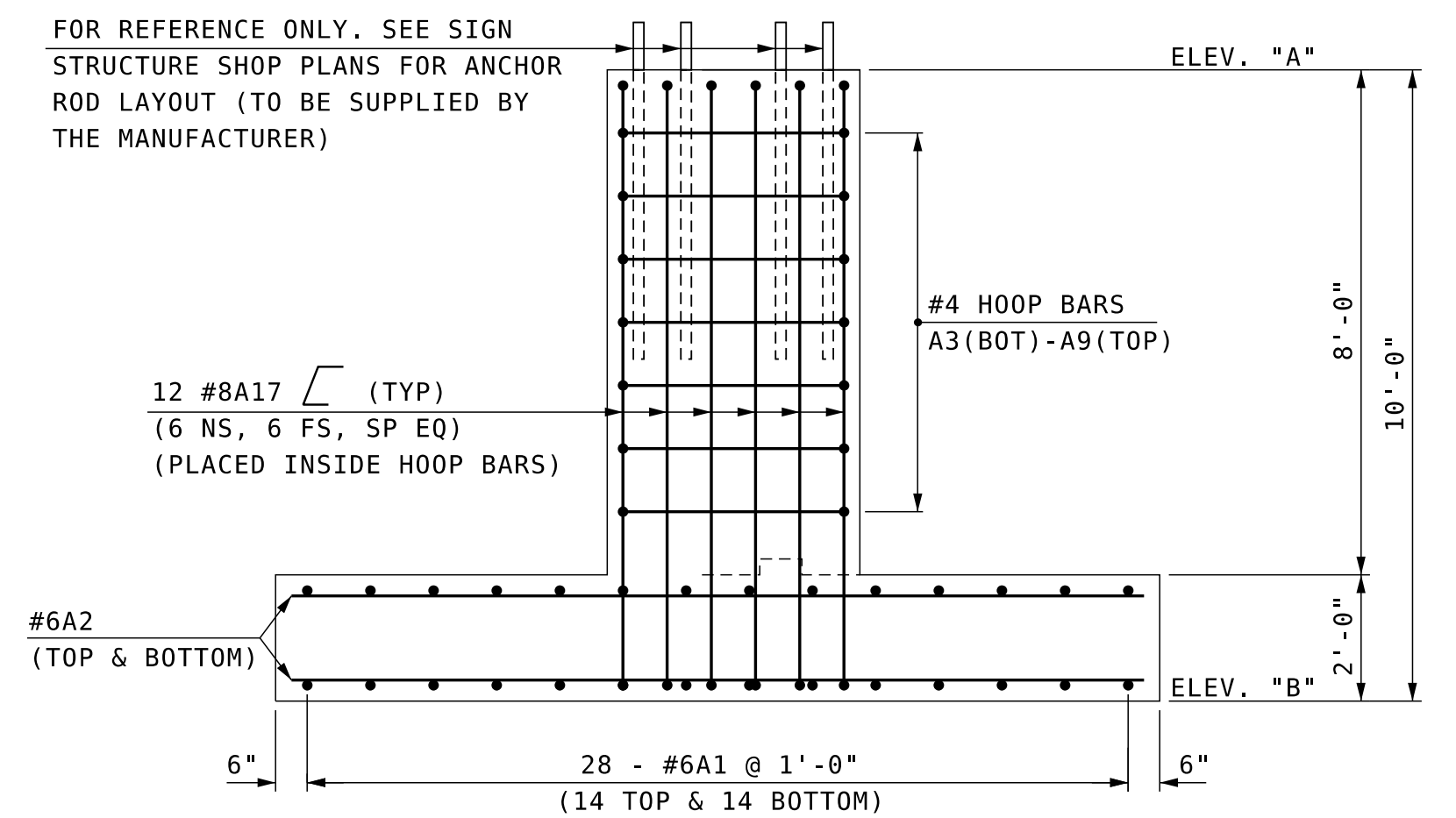


**SCREEN DETAIL**

NOT TO SCALE

**ANCHOR ROD DETAIL**

NOT TO SCALE



**REINFORCING - END ELEVATION**

SCALE: 3/8" = 1'-0"

STATE OF NEW HAMPSHIRE DEPARTMENT OF TRANSPORTATION * BUREAU OF BRIDGE DESIGN									
TOWN SALEM		BRIDGE NO. N/A		STATE PROJECT 13933D					
LOCATION I-93 SB (NORTH OF EXIT 1, MILE MARKER, 1.8)									
OVERHEAD SIGN STRUCTURE FOOTING								BRIDGE SHEET	
REVISIONS AFTER PROPOSAL		BY	DATE	CHECKED	BY	DATE	OF		
		DESIGNED	ACJ 5/11	CHECKED	KFD 5/11		FILE NUMBER		
		DRAWN	ACJ 5/11	CHECKED	KFD 5/11		115-3		
		QUANTITIES	ACJ 5/11	CHECKED	KFD 5/11		TOTAL SHEETS		
		ISSUE DATE		FEDERAL PROJECT NO.		SHEET NO.		3	
		REV. DATE		-----				3	

**INV #: 399-0093-0001-S1.8**

SUBDIRECTORY	.DGN LOCATOR	SHEET SCALE
SALEM-MANCHESTER 13933D	615.2000X	AS NOTED