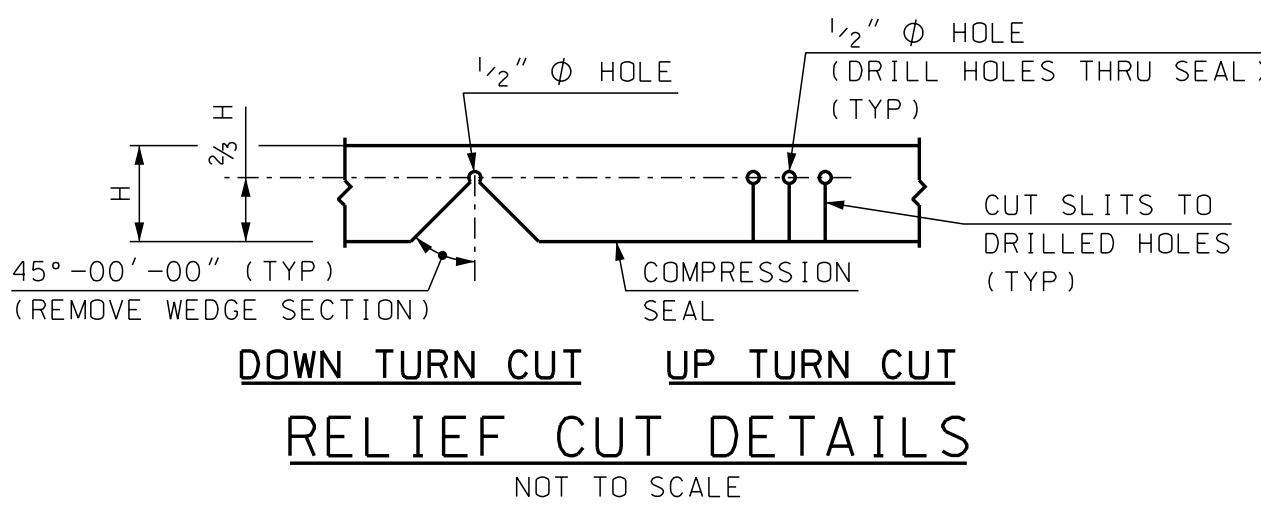


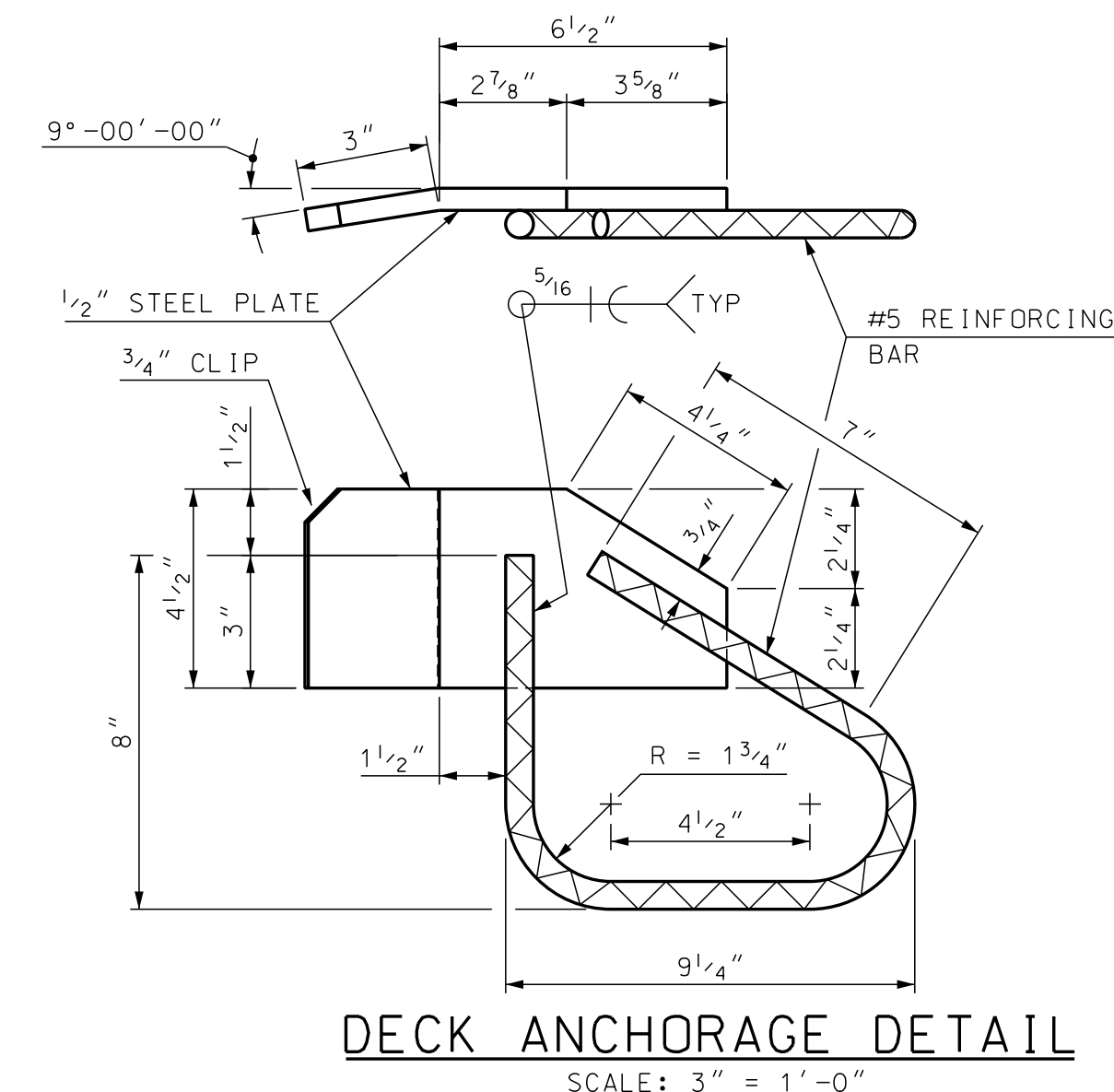
PLAN - WEST ABUTMENT

SCALE: 1/2" = 1'-0"

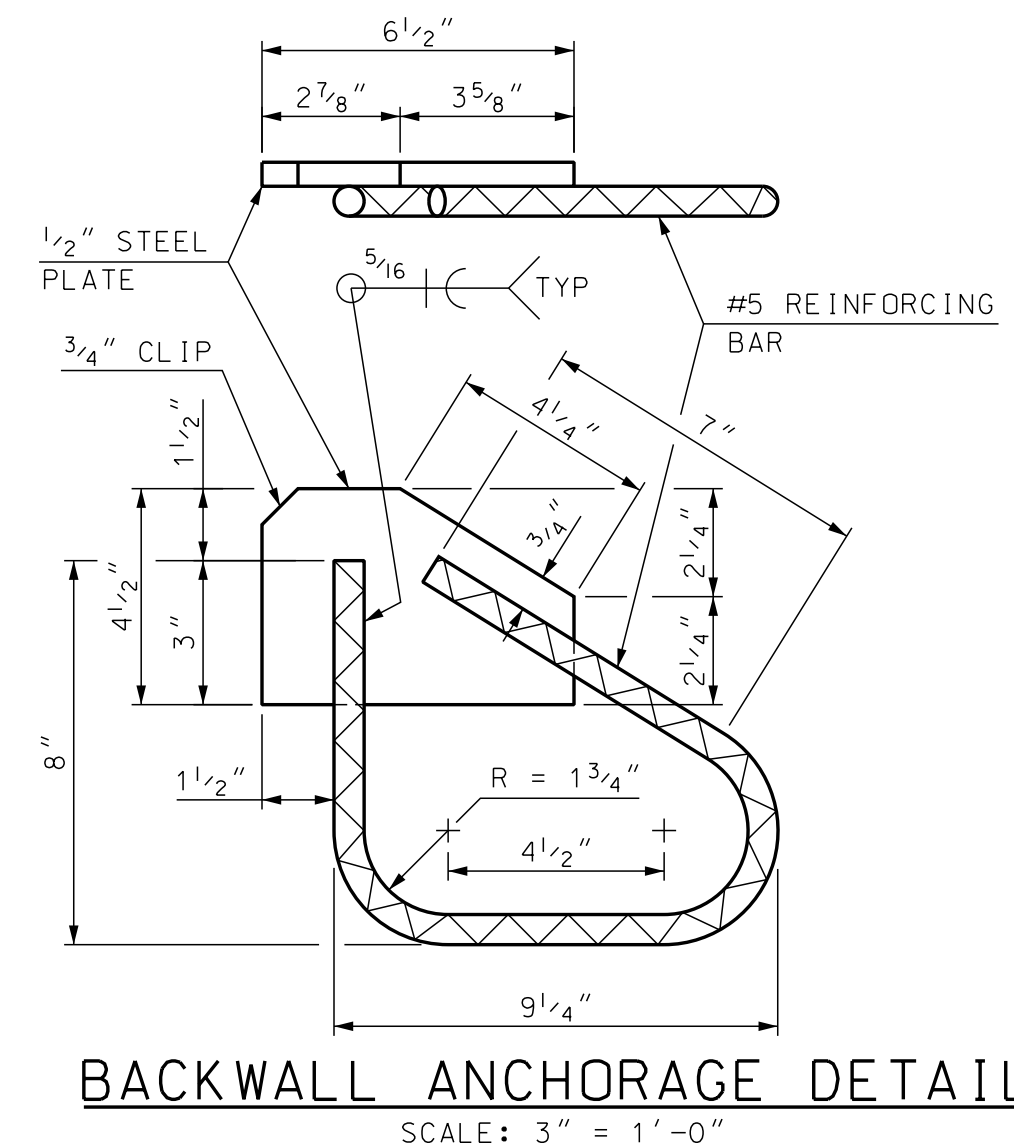


EXPANSION JOINT NOTES

- (1) ALL EXPANSION JOINT STEEL, INCLUDING ANCHORS, SHALL BE GALVANIZED. STEEL ANGLES SHALL BE ASTM A572 GRADE 50. MINOR STEEL PLATES MAY CONFORM TO ASTM A36. THE ENTIRE ASSEMBLY, INCLUDING COMPRESSION SEAL, SHALL BE PAID FOR AS ITEM 560.1001, PREFABRICATED COMPRESSION SEAL EXPANSION JOINT (F).
- (2) SPLICES FOR STEEL ANGLES SHALL DEVELOP FULL STRENGTH.
- (3) EXPANSION JOINT OPENING SHALL BE ADJUSTED TO TEMPERATURE ANTICIPATED JUST PRIOR TO POURING DECK BLOCKOUT. FINAL SETTING IN THE FIELD SHALL BE DETERMINED BY THE CONTRACT ADMINISTRATOR. SEE TEMPERATURE ADJUSTMENT TABLE & NOTES.
- (4) THE COMPRESSION SEAL SHALL BE FURNISHED IN ONE CONTINUOUS LENGTH. NO SPLICES WILL BE ALLOWED. SEAL SHALL BE INSTALLED IN THE FIELD BY THE CONTRACTOR, IN ACCORDANCE WITH THE MANUFACTURER OF THE SEAL, USING AN APPROVED TOOL THAT WILL NOT DAMAGE THE SEAL.
- (5) JOINT SUPPORT PLATES AND CURB PLATES SHALL BE SHOP WELDED TO EXPANSION JOINT STEEL AND SHALL BE NORMAL TO GRADE AFTER JOINT ASSEMBLY HAS BEEN ADJUSTED FOR ROADWAY CROSS-SLOPE AND GRADE. STEEL ANGLES SHALL BE ASSEMBLED WITH A CONSTANT JOINT OPENING TO ENSURE PROPER PERFORMANCE AND WATER TIGHTNESS.
- (6) FIELD SHALL BE IN ACCORDANCE WITH SECTION 550.3.16. ALL COSTS FOR FIELD WELDING SHALL BE INCLUDED IN ITEM 560.1001
- (7) IMMEDIATELY AFTER THE JOINT HAS BEEN SECURED TO THE STRUCTURAL STEEL AND BACKWALL, REMOVE SHIPPING DEVICES AND GRIND SMOOTH ANY WELDS ON EXPOSED SURFACES. REPAIR ANY DAMAGE TO GALVANIZED SURFACES IN ACCORDANCE WITH SECTION 550.
- (8) PROTECT TOP OF EXPANSION JOINT DURING PLACEMENT OF CONCRETE AND BITUMINOUS PAVEMENT.
- (9) THE COMPRESSION SEAL HAS BEEN DESIGNED FOR A TOTAL FACTORED MOVEMENT OF 1.0 INCH. DESIGN INCLUDES MOVEMENT DUE TO TEMPERATURE, SKEW, SHRINKAGE AND MINIMUM INSTALLATION WIDTH. THE CONTRACTOR SHALL USE A WA-300 SEAL BY WATSON BOWMAN OR CV-3000 BY D.S. BROWN, AS NOTED IN THE OPL.
- (10) ELEVATIONS SHOWN AT TOP OF ANGLES ARE 1/8" LOWER THAN PROPOSED FINISHED ROADWAY GRADE.
- (11) PRIOR TO INSTALLING THE SEAL, ALL TEMPORARY FORM WORK SHALL BE REMOVED. STEEL ANGLES AND STOP BARS SHALL BE MAINTAINED FREE FROM DIRT, WATER AND ANY OTHER LOOSE DEBRIS, WITH THE USE OF COMPRESSED AIR, TO ENSURE PROPER FIT OF THE SEAL. CARE SHALL BE TAKEN NOT TO DAMAGE GALVANIZED SURFACES.
- (12) A TEMPORARY SEAL(S) SHALL BE INSTALLED PRIOR TO THE START OF THE WINTER MAINTENANCE PERIOD FOR ALL JOINT ASSEMBLIES OR PORTIONS THEREOF THAT WILL BE IN PLACE THROUGHOUT THE WINTER. ALL TEMPORARY SEALS SHALL BE REMOVED AND JOINT OPENINGS AND SUBSTRUCTURE SHALL BE CLEANED PRIOR TO INSTALLING THE FINAL SEAL. ALL COSTS SHALL BE SUBSIDIARY TO ITEM 560.1001.
- (13) FOR SECTIONS A-A, B-B, C-C, AND D-D SEE BRIDGE SHEET XX.



DECK ANCHORAGE DETAIL
SCALE: 3" = 1'-0"



BACKWALL ANCHORAGE DETAIL
SCALE: 3" = 1'-0"

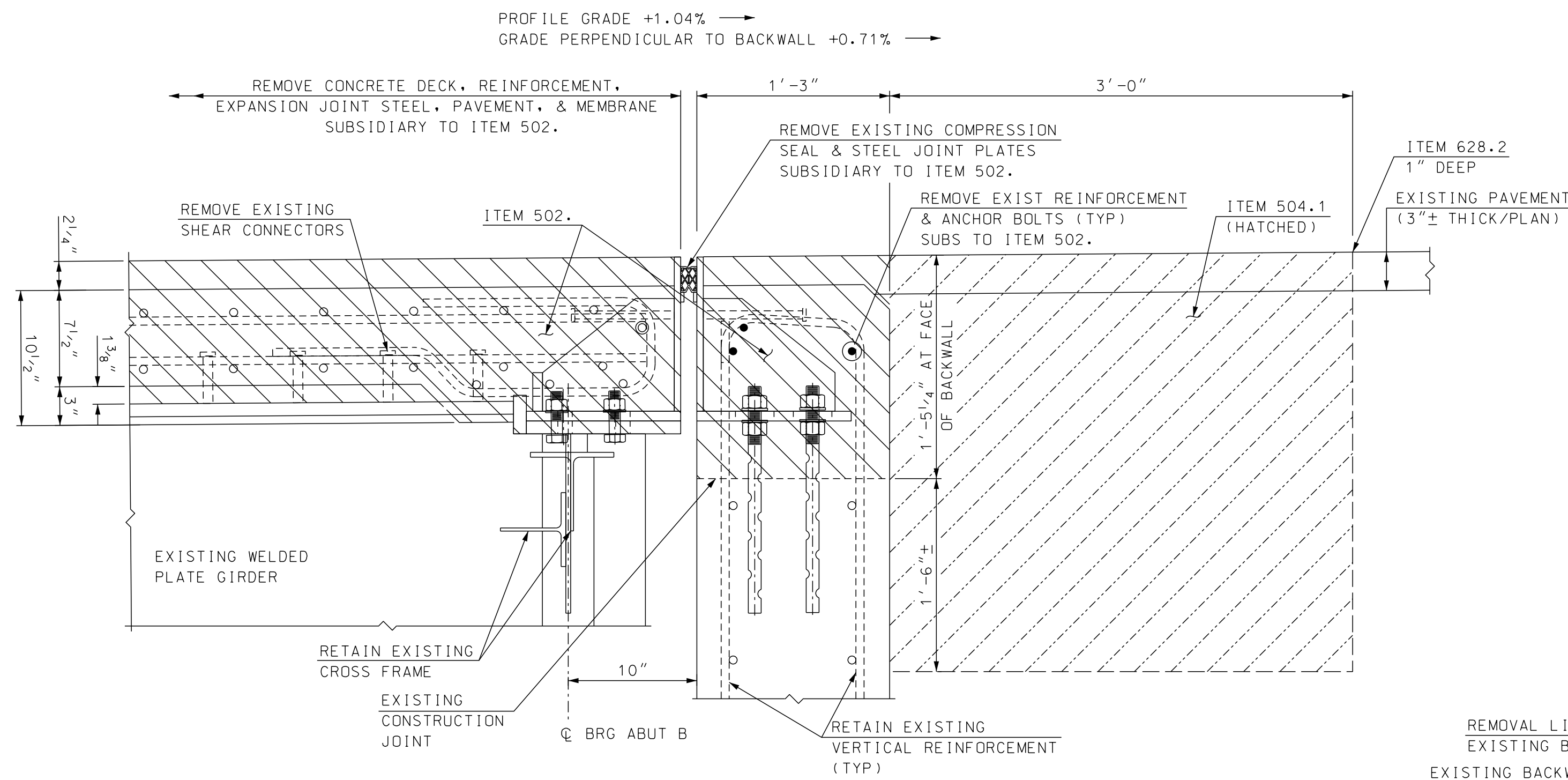
NHDOT Bridge Design
9/28/20

SAMPLE PLAN
Details and notes may not be current.
Closely review before using details.

PLANS
SUBJECT TO CHANGE
DATE 28-SEPT-20

STATE OF NEW HAMPSHIRE									
DEPARTMENT OF TRANSPORTATION * BUREAU OF BRIDGE DESIGN									
TOWN	AMHERST	BRIDGE NO.	135/109	STATE PROJECT	41413	BRIDGE SHEET			
LOCATION NH ROUTE 122 over NH ROUTE 101						FILE NUMBER			
COMPRESSION SEAL JOINT (1 OF 2)						X-X-X-X			
REVISIONS AFTER PROPOSAL		BY	DATE	CHECKED	XXX	XX/XX	XX OF		
		DESIGNED	ABH	9/20	CHECKED	XXX	FILE NUMBER		
		DRAWN	SMG	9/20	CHECKED	XXX	X-X-X-X		
		QUANTITIES	XXX	XX/XX	CHECKED	XXX	XX/XX		
ISSUE DATE	FEDERAL PROJECT NO.			SHEET NO.		TOTAL SHEETS			
REV. DATE	-----			15		24			

SUBDIRECTORY	DGN LOCATOR	SHEET SCALE
BRC/SUPER	41413 Comp exp jt	AS NOTED

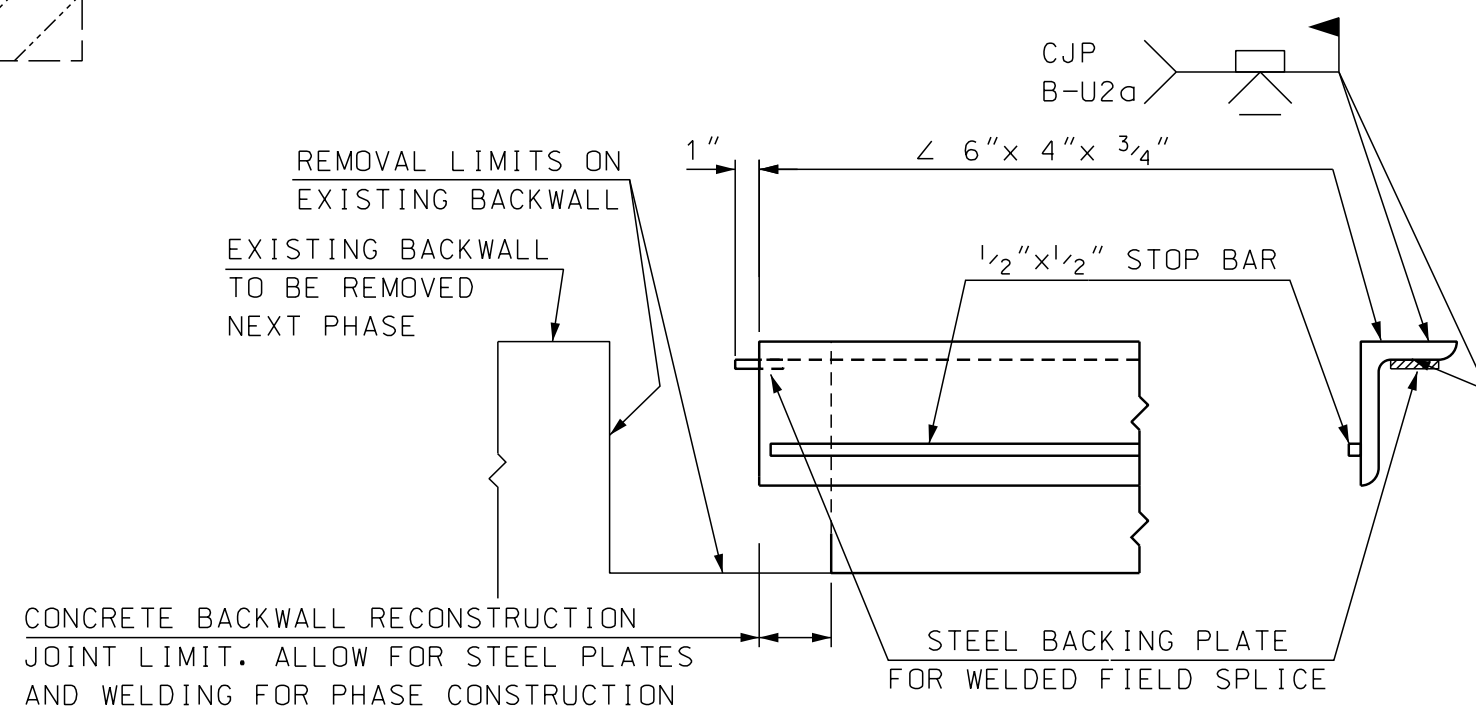


NHDOT Bridge Design
9/28/20

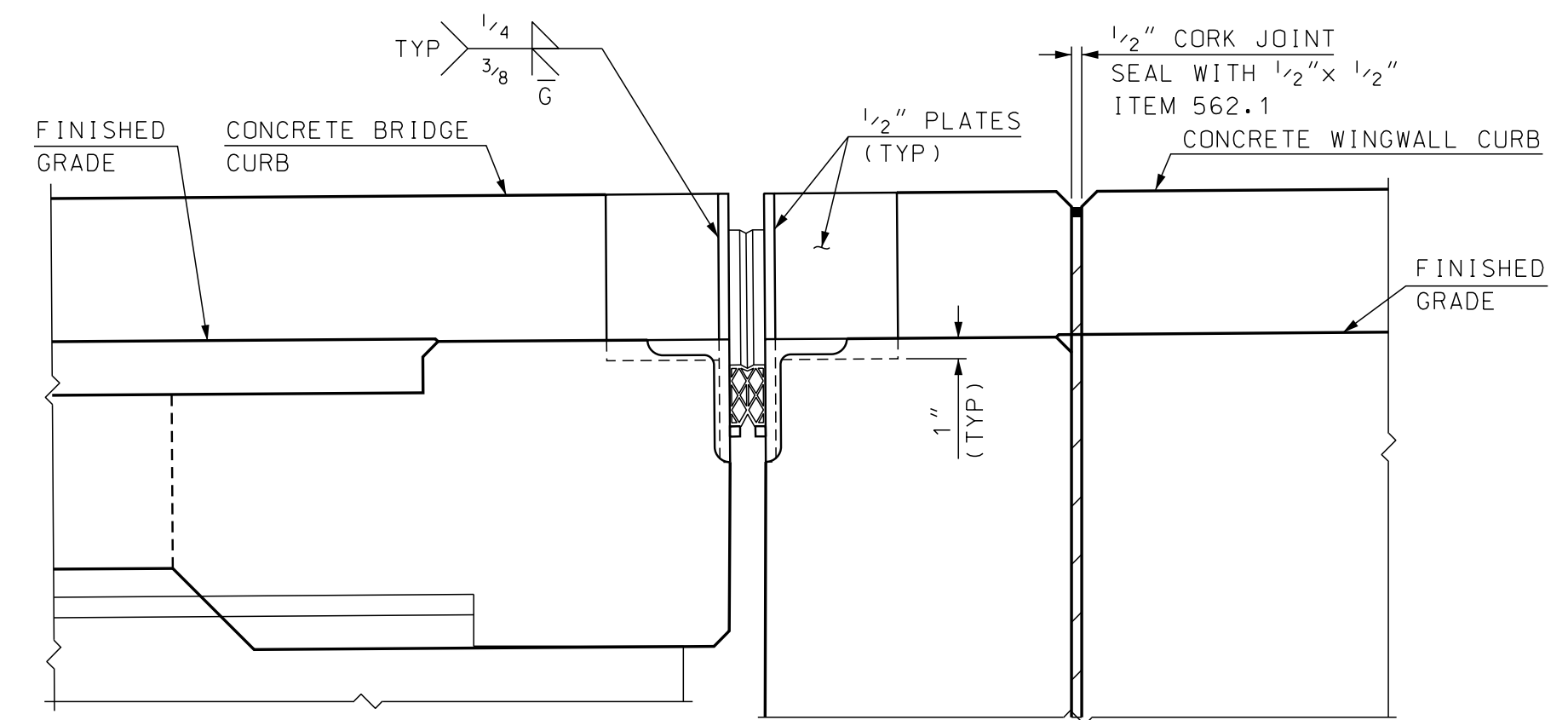
SAMPLE PLAN
Details and notes may not be current.
Closely review before using details.

SECTION A-A REMOVAL
SCALE: 1 1/2" = 1'-0"

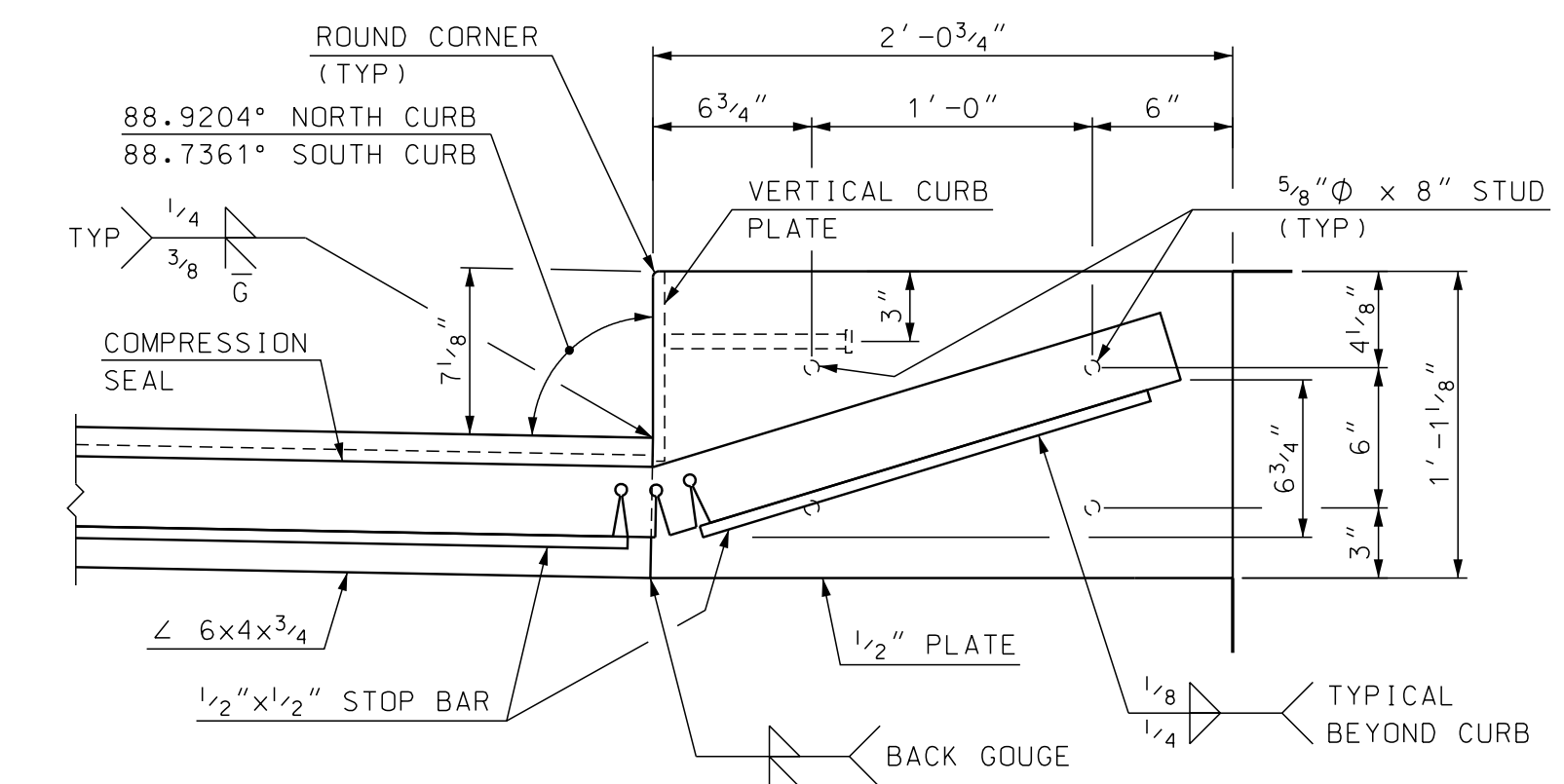
* ELEVATIONS AND PLAN DIMENSIONS AT THIS POINT ARE IN LINE WITH THE FACE OF BACKWALL AND JOINT ASSEMBLY SHALL BE ROTATED TO PROFILE GRADE ABOUT THIS POINT.



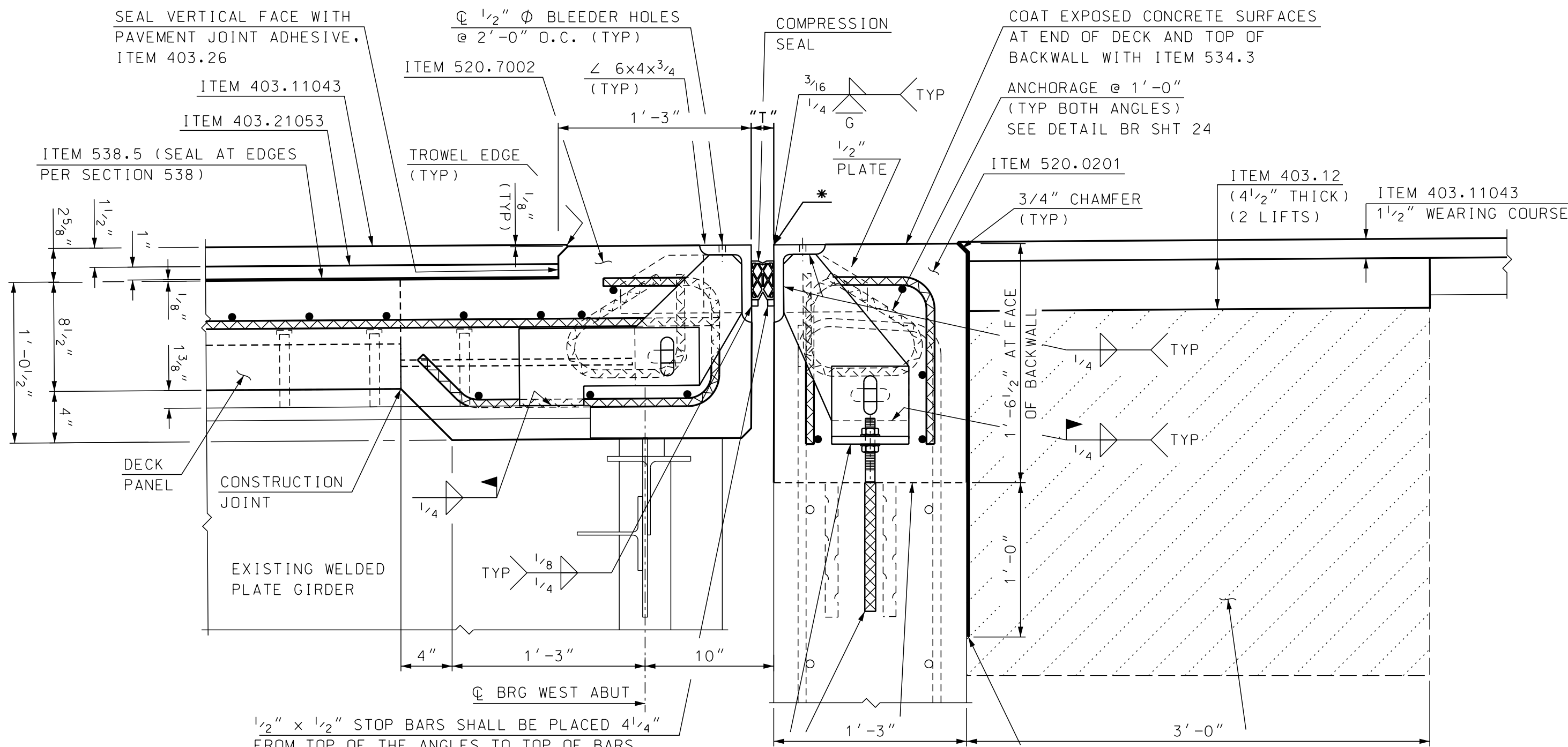
PHASE CONSTRUCTION FIELD WELD SPlice DETAILS
NOT TO SCALE



SECTION B-B
SCALE: 1 1/2" = 1'-0"



SECTION C-C
SCALE: 1 1/2" = 1'-0"

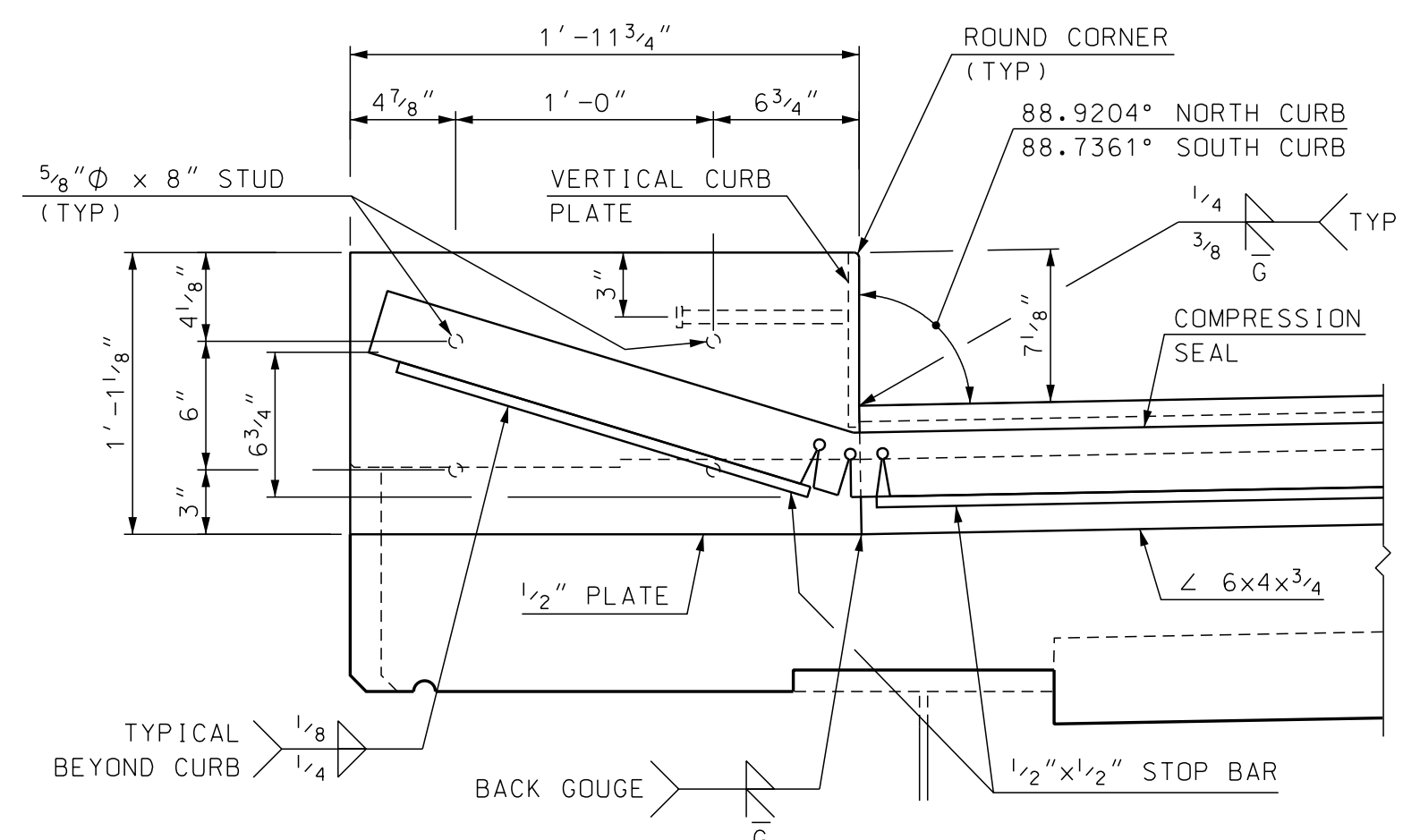


SECTION A-A RECONSTRUCTION
SCALE: 1 1/2" = 1'-0"

TEMPERATURE ADJUSTMENT TABLE	
TEMPERATURE	"T"
20°F	2 1/16"
35°F	1 15/16"
50°F	1 7/8"
65°F	1 3/4"
80°F	1 5/8"
95°F	1 1/2"

TEMPERATURE ADJUSTMENT NOTES

- "T" DIMENSIONS ARE PERPENDICULAR TO FACE OF BACKWALL.
- MINIMUM "T" WIDTH FOR SEAL INSTALLATION = 1 3/4" (APPROXIMATELY 65°F OR LESS).
- VALUES IN THE TEMPERATURE ADJUSTMENT TABLE ARE FOR SETTING THE EXPANSION JOINT ASSEMBLY IMMEDIATELY PRIOR TO POURING THE DECK BLOCKOUT.



SECTION D-D
SCALE: 1 1/2" = 1'-0"

FOR LOCATION OF SECTIONS A-A, B-B, C-C, AND D-D SEE BRIDGE SHEET XX.

PLANS
SUBJECT TO CHANGE
DATE 28-SEPT-20

STATE OF NEW HAMPSHIRE					
DEPARTMENT OF TRANSPORTATION * BUREAU OF BRIDGE DESIGN					
TOWN	AMHERST	BRIDGE NO.	135/109	STATE PROJECT	41413
LOCATION NH ROUTE 122 over NH ROUTE 101					
COMPRESSION SEAL JOINT (2 OF 2)					BRIDGE SHEET
REVISIONS AFTER PROPOSAL					XX OF
DESIGNED	ABH	DATE	9/20	CHECKED	XXX XX/XX
DRAWN	SMG	DATE	9/20	CHECKED	XXX XX/XX
QUANTITIES	XXX	DATE	XX/XX	CHECKED	XXX XX/XX
ISSUE DATE	FEDERAL PROJECT NO.			SHEET NO.	TOTAL SHEETS
REV. DATE	-----			16	24

SUBDIRECTORY	DGN LOCATOR	SHEET SCALE
BRC/SUPER	41413 Comp exp jt	AS NOTED