

Governor's Advisory Commission  
on Intermodal Transportation



Transportation excellence enhancing the quality of life in New Hampshire

2021-2030 Ten Year Plan Kickoff Meeting  
Presentation Supplement

July 31, 2019

**Table of Contents**

Status of 2019-2020 Construction Projects .....1-2

Maps

Airports .....

Public Transportation.....

Urbanized Areas .....

Railroads.....

Federal-Aid Eligible Roads .....

# Supplemental Information

## Status of 2019-2020 Construction Projects

### Summary

Status of Construction	# of Projects	%
On Track	73	72%
Advanced	7	7%
Delayed	16	16%
Withdrawn	5	5%
<b>Grand Total</b>	<b>101</b>	<b>100%</b>

### Status of 2019-2020 Construction Projects

Name	Number	Ad Date	Status	Reason
<b>On-Track</b>				
ALEXANDRIA	15937	2019	On-track	
AMHERST	20231	2018	On-track	
ASHLAND	41370	2020	On-track	
BARNSTEAD	16020	2020	On-track	
BARNSTEAD-ALTON	14121	2019	On-track	
BARRINGTON	41398	2019	On-track	
BROOKLINE	41364	2020	On-track	
CANAAN	41399	2020	On-track	
CLAREMONT	41748	2020	On-track	
CONWAY	15864	2019	On-track	
CONWAY	41755	2021	On-track	
DANBURY	16303	2020	On-track	
DERRY	41400	2019	On-track	
DISTRICT 1	16161G	2018	On-track	
DISTRICT 2	16162G	2018	On-track	
DISTRICT 3	16163G	2018	On-track	
DISTRICT 4	16164G	2018	On-track	
DISTRICT 5	16165G	2018	On-track	
DISTRICT 6	16166G	2018	On-track	
DOVER	41746	2020	On-track	
DOVER-PORTSMOUTH	41098	2018	On-track	
DURHAM	16254	2020	On-track	
DURHAM (UNH)	41369	2020	On-track	
EXETER	41372	2020	On-track	
FRANCESTOWN	15765	2020	On-track	
GILMANTON	16232	2019	On-track	
HAMPTON - PORTSMOUTH	26485	2019	On-track	
HARRISVILLE	16114	2025	On-track	
HINSDALE	41365	2020	On-track	
JACKSON	40808	2020	On-track	
KEENE	15854	2019	On-track	
LACONIA	16144	2019	On-track	
LACONIA	40656	2020	On-track	
LANCASTER, NH - GUILDHALL, VT	16155	2019	On-track	
LEBANON	15717	2019	On-track	
LEBANON	41366	2020	On-track	
LEBANON, NH - HARTFORD, VT	16148	2019	On-track	
LOUDON - CANTERBURY	29613A	2020	On-track	
MANCHESTER-MERRIMACK	41097	2018	On-track	
MILTON, NH-LEBANON, ME	40658	2020	On-track	
NASHUA	16314	2020	On-track	
NASHUA	41742	2020	On-track	
NEW CASTLE - RYE	16127	2020	On-track	
NEW LONDON	41219	2018	On-track	
NEWINGTON	11238U	2019	On-track	
NEWINGTON - DOVER	11238Q	2016	On-track	
NORTHFIELD	29756	2018	On-track	
NORTHWOOD	41397	2019	On-track	
OSSIPEE	10431	2019	On-track	
OSSIPEE	13910	2019	On-track	
OSSIPEE	14749	2018	On-track	
PELHAM	26762	2018	On-track	
PETERBOROUGH	14772A	2019	On-track	
PETERBOROUGH	14933	2019	On-track	
PETERBOROUGH	15879	2020	On-track	
PORTSMOUTH	41752	2020	On-track	

# Supplemental Information

RINDGE	22652	2020	On-track
SALEM	20228	2019	On-track
SALEM	41750	2020	On-track
SALEM TO MANCHESTER	13933A	2019	On-track
SALEM TO MANCHESTER	14633B	2016	On-track
SALEM TO MANCHESTER	14633D	2016	On-track
SALEM TO MANCHESTER	14633H	2016	On-track
SALEM TO MANCHESTER	14633I	2017	On-track
SOMERSWORTH	41363	2020	On-track
SOMERSWORTH	41741	2020	On-track
SPRINGFIELD	20509	2020	On-track
STATEWIDE GUARDRAIL REPAIR	41337	2017	On-track
STATEWIDE TIER 1 CRACKSEAL	41327	2019	On-track
SWANZEY	40485	2019	On-track
TILTON	29753	2019	On-track
WALPOLE - CHARLESTOWN	14747	2017	On-track
WARNER	40512	2019	On-track

## Advanced

DURHAM	16236	2018	Advanced (1 year)	Design-Build RFP
JACKSON	27709	2019	Advanced (3 year)	HB1817 funded
LEBANON	25821	2019	Advanced (3 year)	HB1817 funded
LEBANON	41191	2019	Advanced (2 year)	HB1817 funded
LYME, NH - THETFORD, VT	14460	2020	Advanced (1 year)	HB1817 funded
MANCHESTER	28336	2020	Advanced (1 year)	HB1817 funded
WOLFEBORO	40617	2019	Advanced (7 year)	SB38 funds

## Delayed

BEDFORD	21684	2021	Delayed (1 year)	Municipally Managed
BEDFORD - MERRIMACK	16100	2021	Delayed (2 year)	Schedule/Permitting coordination
CONWAY	40018	2020	Delayed (1 year)	Municipally Managed
DERRY - LONDONDERRY	13065	2020	Delayed (1 year)	NEPA Documentation
GILMANTON	16234	2021	Delayed (1 year)	Municipally Managed
HINSDALE, NH - BRATTLEBORO, VT	12210C	2020	Delayed (1 year)	ROW acquisition delays
KEENE	10309B	2020	Delayed (1 year)	Bridge work aligned with Roadwork
LEBANON	13558A	2021	Delayed (1 year)	Municipally Managed
LEBANON	40794	2021	Delayed (1 year)	Municipally Managed
LONDONDERRY	41715	2020	Delayed (1 year)	Schedule/Permitting coordination
MANCHESTER	40428	2020	Delayed (2 year)	Municipally Managed
MERRIMACK	40300	2020	Delayed (2 year)	Municipally Managed
NEWINGTON - DOVER	11238S	2021	Delayed (2 year)	Environmental Permitting
PORTSMOUTH, NH - KITTERY, ME	16189	2019	Delayed (1 year)	MaineDOT Advertismet
SALEM	12334	2020	Delayed (1 year)	ROW acquisition Delays
SALEM TO MANCHESTER	14633J	2020	Delayed (1 year)	Schedule/Permitting coordination

## Withdrawn

BELMONT	22872	Municipal	Withdraw/Removed	Completed by town - municipal funded
MERRIMACK	41371	Municipal	Withdraw/Removed	Cancelled - project scope to be completed under separate TA project
SANBORNTON-ASHLAND	41328	Programmatic	Withdraw/Removed	Cancelled - scope to be completed under 2 other projects (41673 & 41674)
STRAFFORD	14790	Municipal	Withdraw/Removed	Completed by town - municipal funded
WENTWORTH	40648	Municipal	Withdraw/Removed	Completed by town - municipal funded

# Public Use Airports

**Legend**

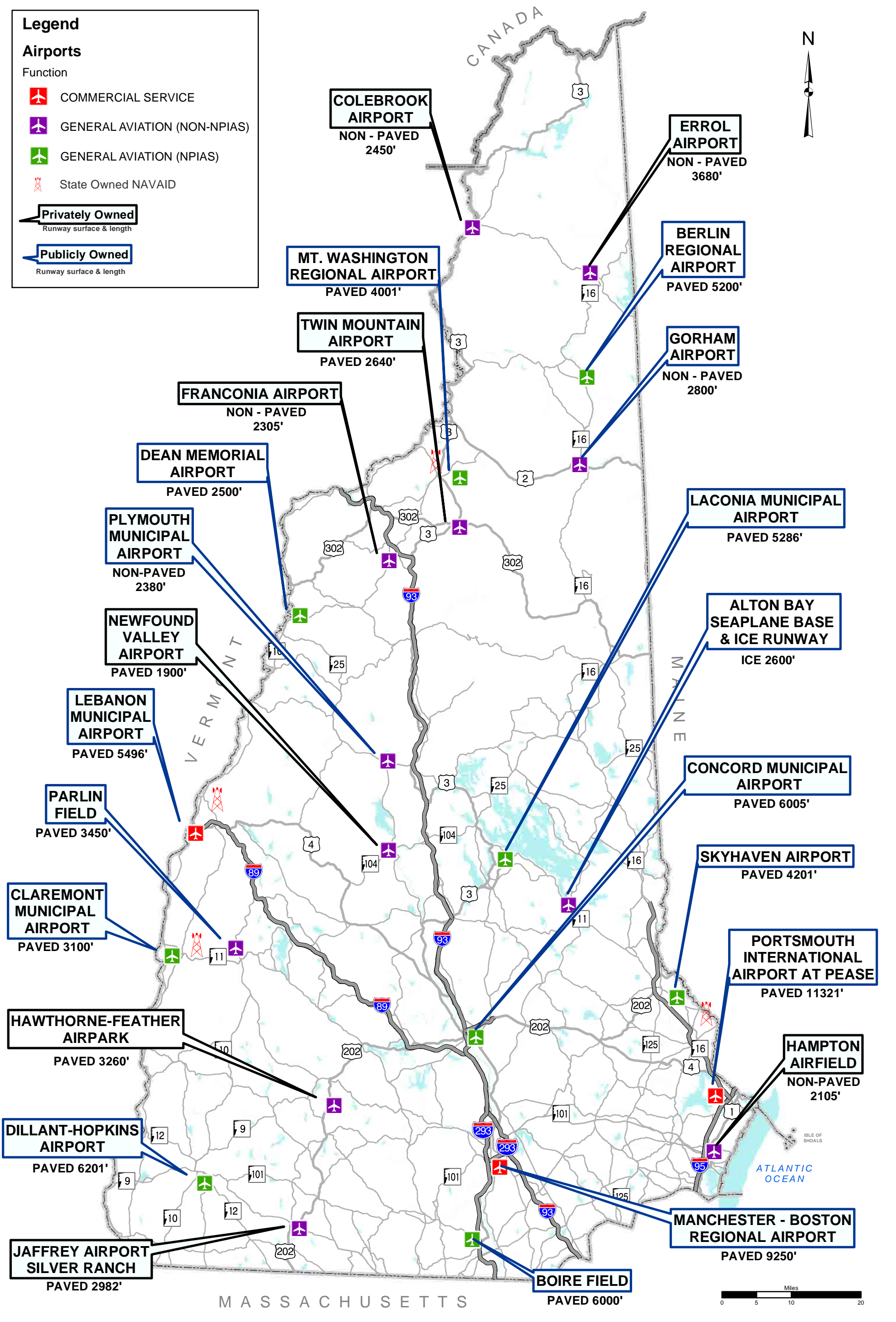
**Airports**

Function

- COMMERCIAL SERVICE
- GENERAL AVIATION (NON-NPIAS)
- GENERAL AVIATION (NPIAS)
- State Owned NAVAID

**Privately Owned**  
Runway surface & length

**Publicly Owned**  
Runway surface & length



# PUBLIC TRANSPORTATION



## Local Transit Provider Service Areas

- 1 North Country Transit
- 2 Carroll County Transit
- 3 Advance Transit
- 4 Sullivan County Transportation
- 5 Concord Area Transit
- 6 COAST
- 7 Wildcat Transit
- 8 Manchester Transit Authority
- 9 Keene City Express
- 10 CART
- 11 Nashua City Bus

## Intercity Bus Routes

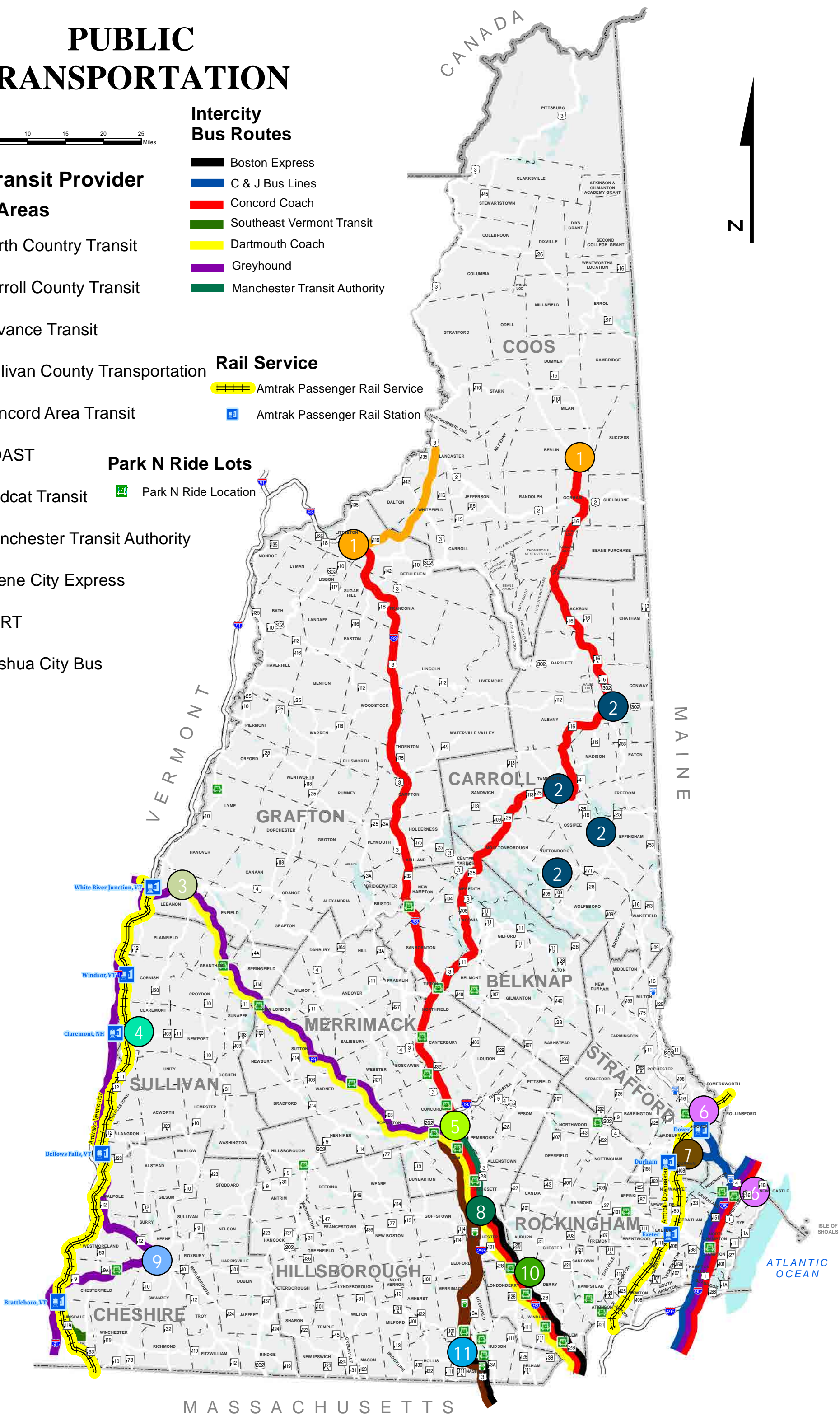
- Boston Express
- C & J Bus Lines
- Concord Coach
- Southeast Vermont Transit
- Dartmouth Coach
- Greyhound
- Manchester Transit Authority

## Rail Service

- Amtrak Passenger Rail Service
- Amtrak Passenger Rail Station

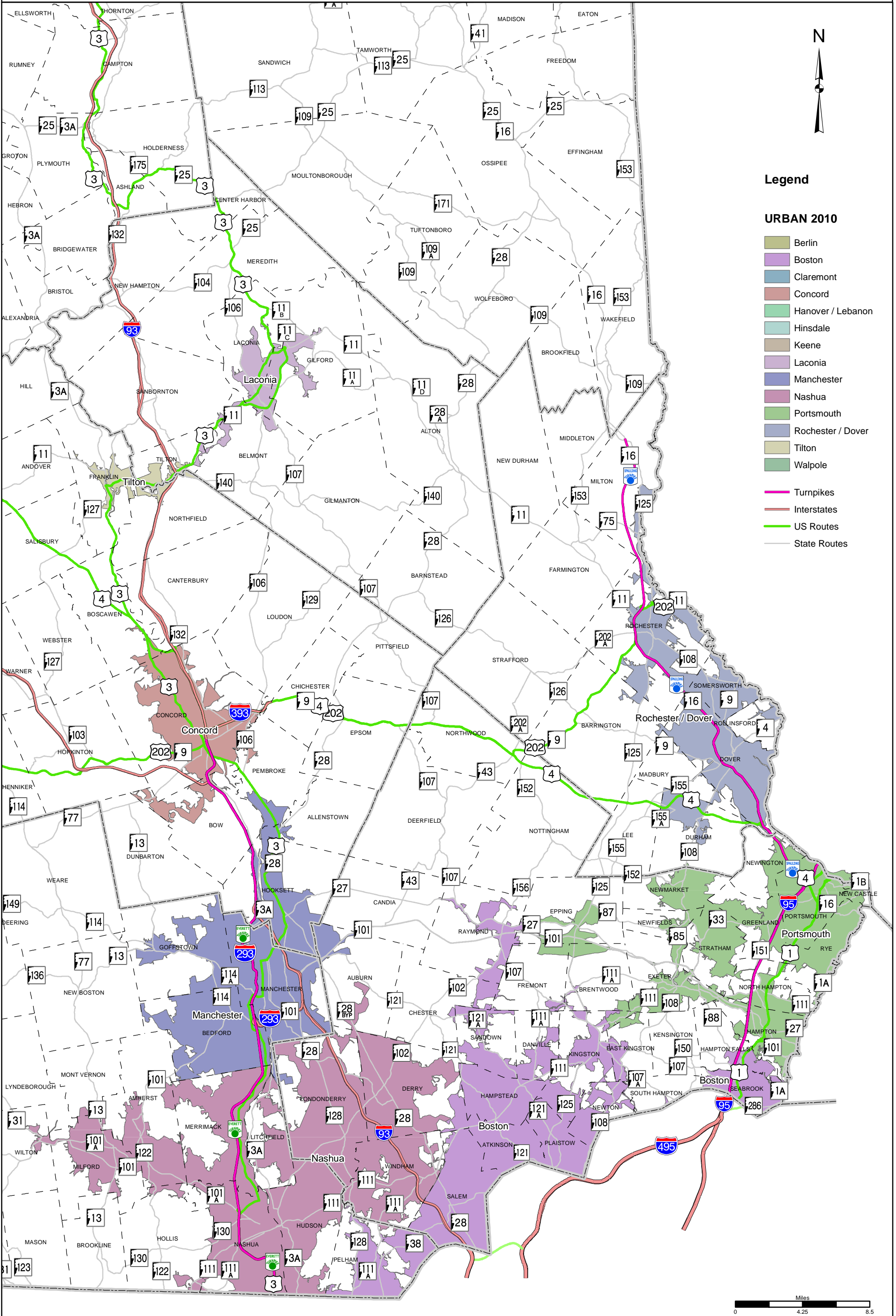
## Park N Ride Lots

- Park N Ride Location



# State of New Hampshire

## Urbanized Areas



# RAILROADS

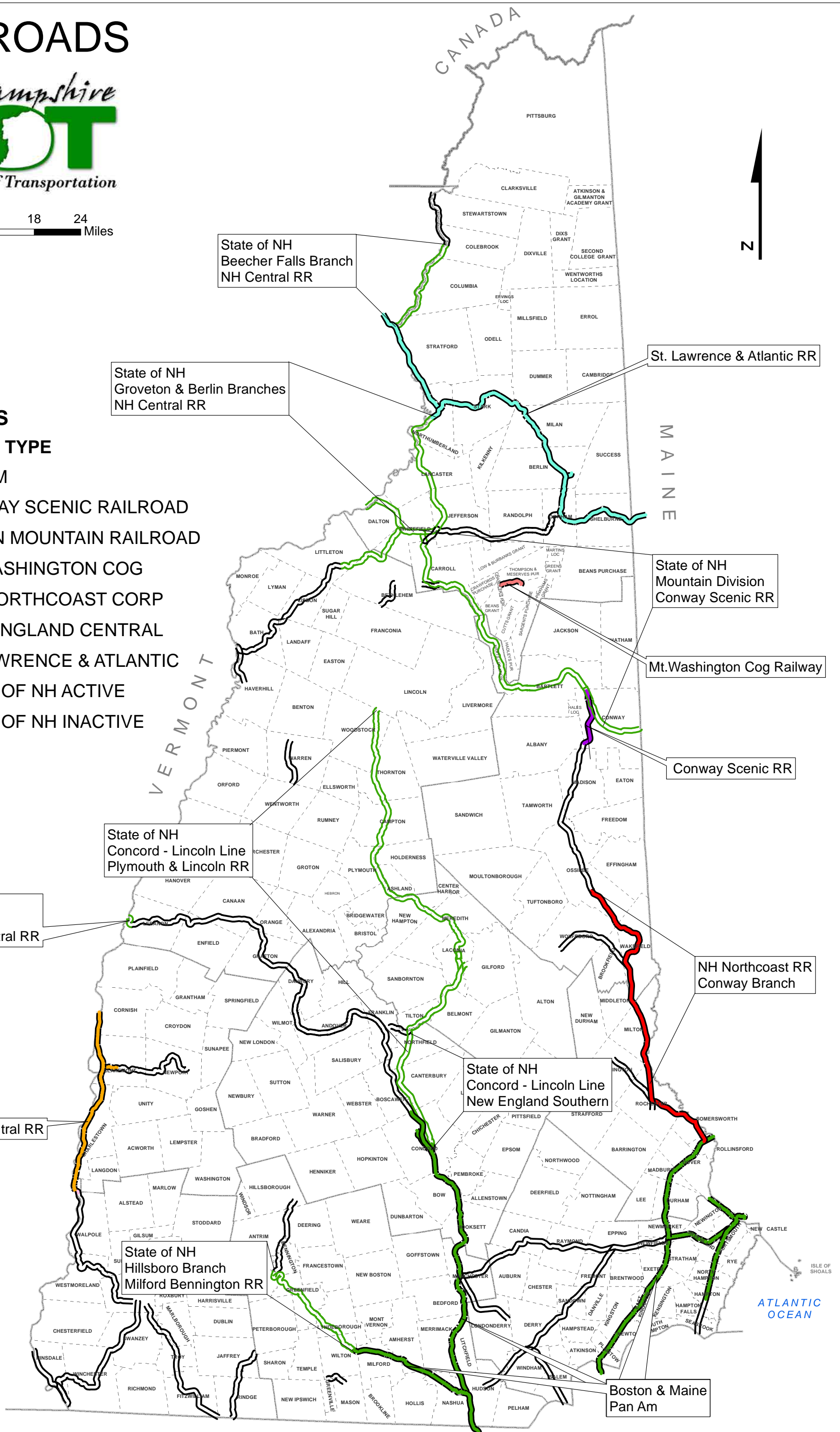


0 3 6 12 18 24 Miles

## RAILROADS

### OWNER AND TYPE

- PAN AM
- CONWAY SCENIC RAILROAD
- GREEN MOUNTAIN RAILROAD
- MT. WASHINGTON COG
- N.H. NORTHCOAST CORP
- NEW ENGLAND CENTRAL
- ST. LAWRENCE & ATLANTIC
- STATE OF NH ACTIVE
- STATE OF NH INACTIVE



MASSACHUSETTS

AUGUST 2018



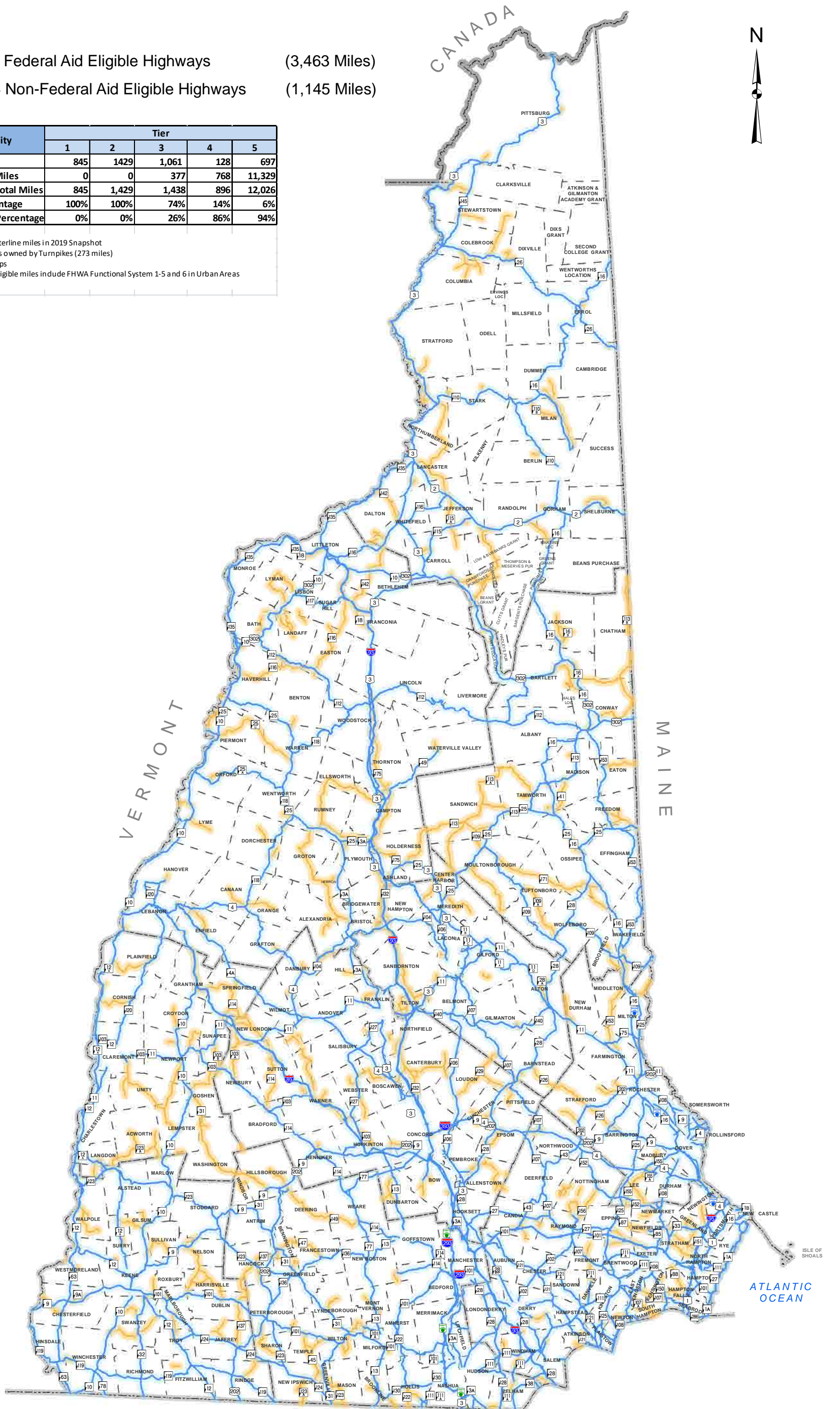
# Federal Aid Eligible Roads

## Legend

- Tier 1-4 Federal Aid Eligible Highways (3,463 Miles)
- Tier 1-4 Non-Federal Aid Eligible Highways (1,145 Miles)

Fed Aid Eligibility	Tier				
	1	2	3	4	5
Fed Aid Eligible Miles	845	1429	1,061	128	697
Non Fed Aid Eligible Miles	0	0	377	768	11,329
<b>Total Miles</b>	<b>845</b>	<b>1,429</b>	<b>1,438</b>	<b>896</b>	<b>12,026</b>
Fed Aid Eligible Percentage	100%	100%	74%	14%	6%
Non-Fed Aid Eligible Percentage	0%	0%	26%	86%	94%

Notes: 1. Based on centerline miles in 2019 Snapshot  
 2. Includes miles owned by Turnpikes (273 miles)  
 3. Includes Ramps  
 4. Federal Aid Eligible miles include FHWA Functional System 1-5 and 6 in Urban Areas



**Mission:**

Transportation excellence enhancing the quality of life in New Hampshire.

**Purpose:**

Transportation excellence in New Hampshire is fundamental to the state's sustainable economic development and land use, enhancing the environment, and preserving the unique character and quality of life. The Department will provide safe and secure mobility and travel options for all of the state's residents, visitors, and goods movement, through a transportation system and services that are well maintained, efficient, reliable, and provide seamless interstate and intrastate connectivity.

**Vision:**

Transportation in New Hampshire is provided by an accessible, multimodal system connecting rural and urban communities. Expanded transit and rail services, and a well-maintained highway network and airport system provide mobility that promotes smart growth and sustainable economic development, while reducing transportation impacts on New Hampshire's environmental, cultural, and social resources. Safe bikeways and sidewalks bring together neighborhoods parks, schools, and downtowns. Creative and stable revenue streams fund an organization that uses its diverse human and financial resources efficiently and effectively.

**Christopher T. Sununu, Governor**

Executive Councilors:

Michael J. Cryans - District 1

Andru Volinsky - District 2

Russell E. Prescott - District 3

Theodore L. Gatsas - District 4

Debora B. Pignatelli - District 5

New Hampshire Department of Transportation

7 Hazen Drive

Concord, New Hampshire 03302-0483

