

Lyme-East Thetford Bridge 14460 Rehabilitation Project



As we move into autumn, crews continues to progress on the rehabilitation of the Lyme-East Thetford bridge. Read on to learn more about project milestones and upcoming work.

The project team reminds everyone that the bridge and work area are closed to motorists, pedestrians, and bicyclists 24 hours a day, seven days a week. This closure is in place for everyone's safety.

Project Milestones

The guardrail, curbing, deck, and exterior stringers have been removed from the western span of the bridge. Work is underway to replace the end floor beams. Crews are actively replacing the exterior stringers and floor beams. This work requires the removal of existing rivets, which is very noisy. Anyone in the area can expect to hear a rat-a-tat-tat sound that echoes.

What to Expect this Month

As we move into October, crews will continue the removal of the guardrail, curbing, deck, exterior stringers, and end floor beams on the bridge's east span. Removal of concrete rubble and scrap steel from the site will continue.

Crews will begin the replacement of the exterior stringers and floor beams on the east and west spans. Crews will also begin the removal and replacement of the underside cross-bracing.

New progress photos are below!



Beginning of saw cutting and deck removal



Deck removal at the west end of the bridge



Deck removal activities to the pier

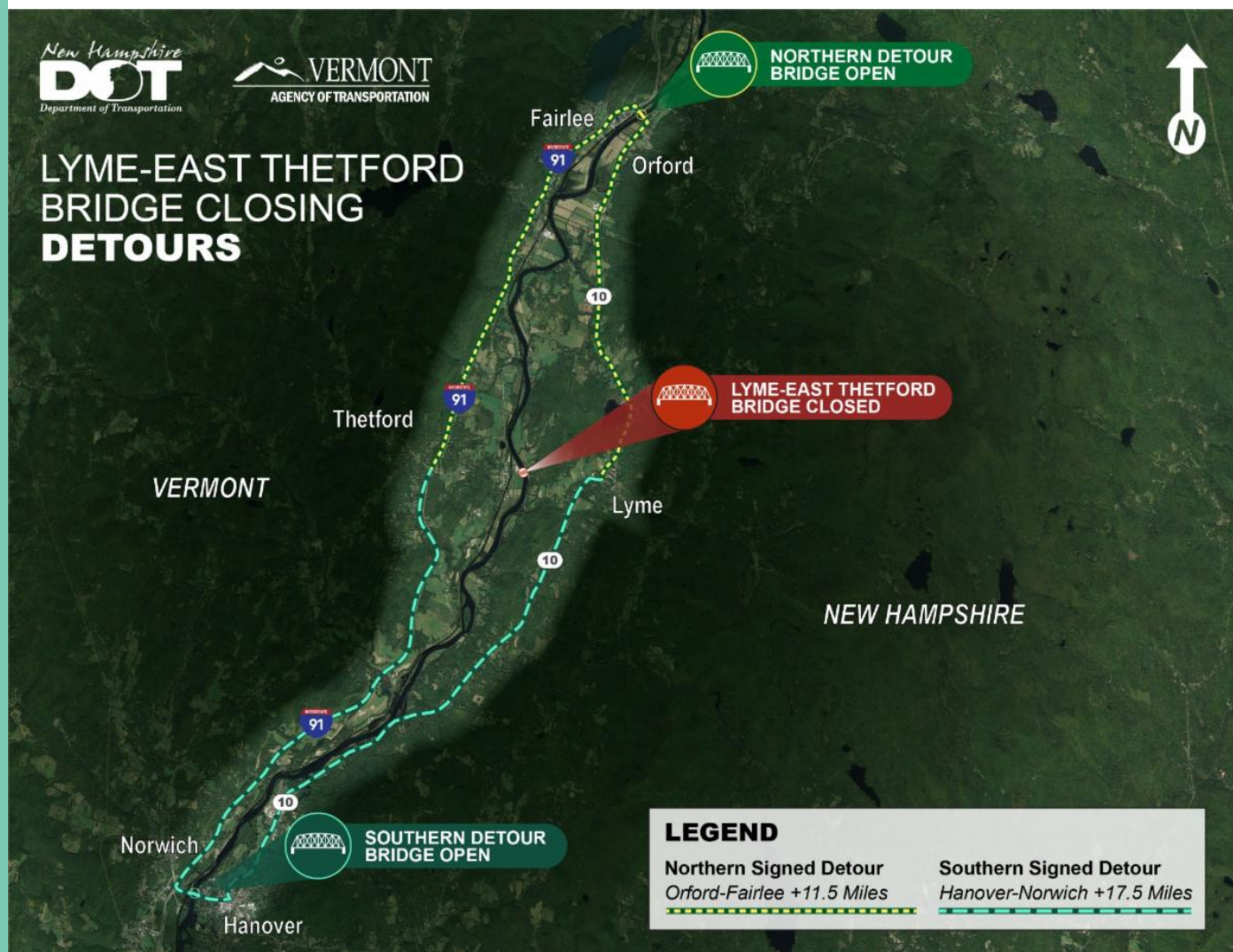


Removal of deck pieces after saw cutting

Detour Reminder

Throughout the 18-month Lyme-East Thetford bridge closure, there are two NHDOT signed detour routes in place. A detour route to the north takes vehicles along NH Route 10, then crosses the Connecticut River between Orford, NH and Fairlee, VT and continues along Interstate 91 south in Vermont. The other detour route to the south takes vehicles along NH Route 10, then crosses the Connecticut River between Hanover, NH and Norwich, VT and continues along Interstate 91 north in Vermont.

Businesses on either side of the bridge remain open for business!



Keep In Touch

If you have any questions throughout the project, please reach out to the project team. The project email address can be found below or on the [project website](#).

Contact Us
info@LymeThetfordbridge.com

[Project Website](#)

The New Hampshire Department of Transportation | 7 Hazen Drive, Concord, NH 03301

[Unsubscribe](#) info@lymethetfordbridge.com

[Update Profile](#) | [Constant Contact Data Notice](#)

Sent by info@lymethetfordbridge.com powered by



Try email marketing for free today!