

SHARE:

[Join Our Email List](#)

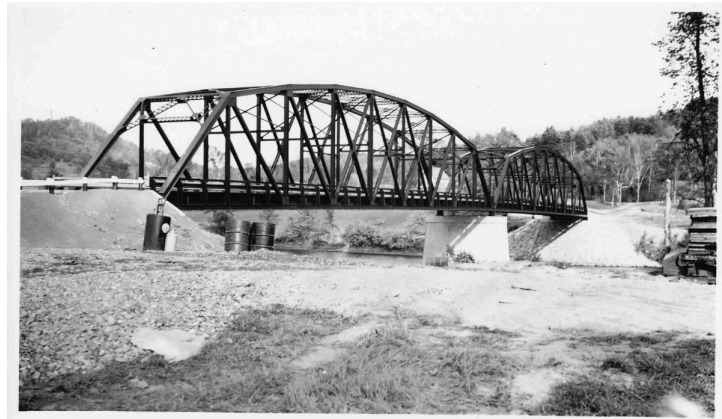
Monthly Project Newsletter

April 2024

NHDOT PROJECT WEBSITE

CONTACT THE TEAM

## Lyme-East Thetford Bridge 14460 Rehabilitation Project



As the Lyme-East Thetford Bridge project progresses, we wanted to take this opportunity to look back at the original 1937 bridge construction. In addition to the progress photos we share each month, we have also included photos from the 1937 bridge construction; see below!

Please remember that the bridge and work area are closed to motorists, pedestrians, and bicyclists 24 hours a day, seven days a week. This closure is in place for everyone's safety.

### Project Milestones

Crews have completed the majority of the structural steel repairs. Repairs to bridge abutment A are complete, and the new concrete has been placed to allow upcoming work on the new concrete bridge deck. Crews have also welded shear studs to each of the floor beams.

### What to Expect this Month

Crews continue to work on and will soon complete the edge of deck forms. Once the edge forms are complete, galvanized reinforced steel will be installed, and the deck concrete will be placed. Crews anticipate completing the VT span in early May and the NH span several weeks later.

The bridge is still on track to reopen in October 2024. However, the reopening is subject to change due to several factors, including weather or material availability.

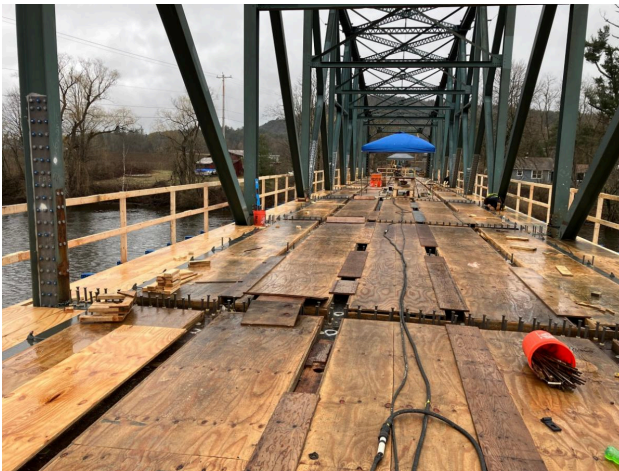
***Recent progress photos are below, as well as photos from the original 1937 construction!***



*Replacing concrete at VT abutment*



*VT abutment*



*VT span with shear studs*



*VT span with deck edge forms*

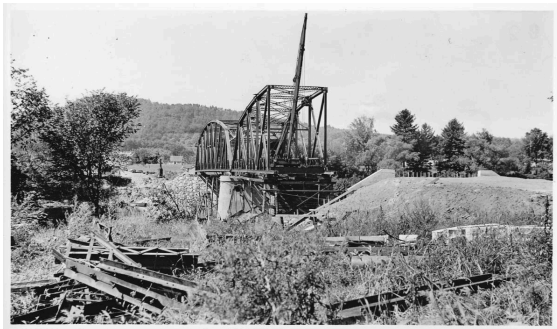


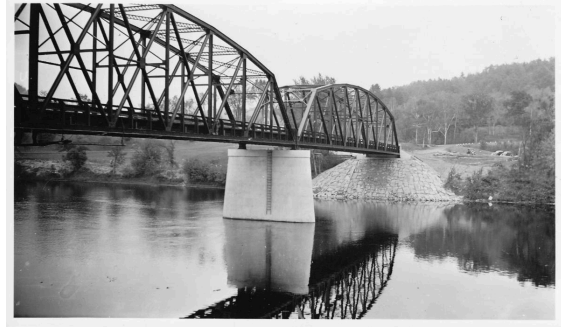
*Shear studs being installed*



*Repaired truss member*

***Photos from the original 1937 Lyme-East Thetford Bridge construction***

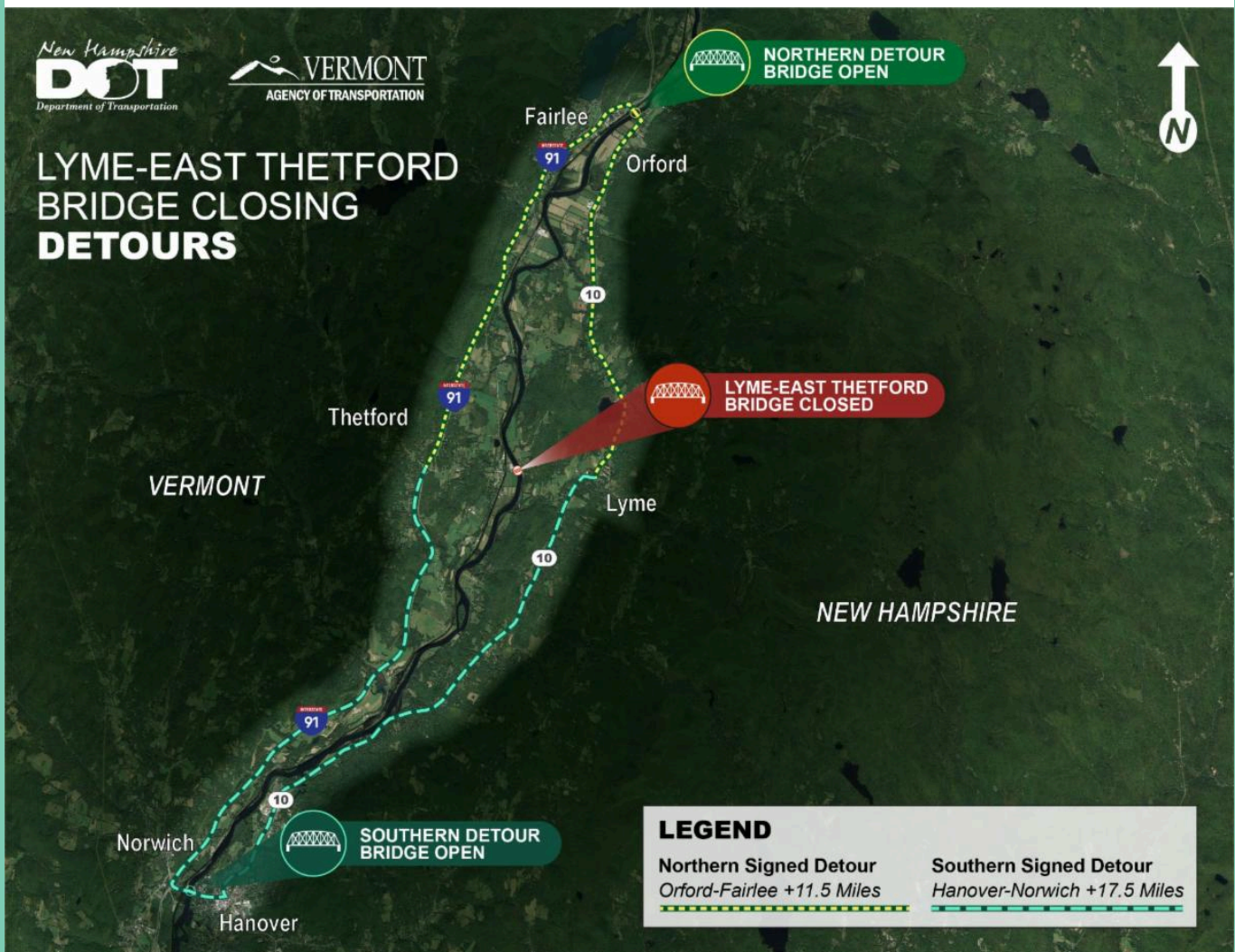




## Detour Reminder

Throughout the 18-month Lyme-East Thetford bridge closure, there are two NHDOT signed detour routes in place. A detour route to the north takes vehicles along NH Route 10, then crosses the Connecticut River between Orford, NH and Fairlee, VT and continues along Interstate 91 south in Vermont. The other detour route to the south takes vehicles along NH Route 10, then crosses the Connecticut River between Hanover, NH and Norwich, VT and continues along Interstate 91 north in Vermont.

***Businesses on either side of the bridge remain open for business!***



**Have Questions? Reach out to the Project Team!**

If you have any questions throughout the project, please reach out to the project team. The project email address can be found below or on the [project website](#).

---

**Contact Us**  
[info@LymeThetfordbridge.com](mailto:info@LymeThetfordbridge.com)

[Project Website](#)

---

The New Hampshire Department of Transportation | 7 Hazen Drive, Concord, NH 03301

[Unsubscribe info@lymethetfordbridge.com](#)

[Update Profile](#) | [Constant Contact Data Notice](#)

Sent by info@lymethetfordbridge.com powered by



Try email marketing for free today!