

Lyme-East Thetford Bridge 14460 Rehabilitation Project



Despite the very wet summer we have experienced to date, crews continue to make significant progress on the Lyme-East Thetford bridge rehabilitation.

The project team reminds everyone that the bridge and work area are closed to motorists, pedestrians, and bicyclists 24 hours a day, seven days a week. This closure is in place for everyone's safety.

Please read on to learn more about completed work and upcoming activities for the coming month.

Project Milestones

Crews have successfully completed the blasting of rust and lead paint removal on the Lyme-East Thetford bridge. The prime coat of new paint is now on the bridge.

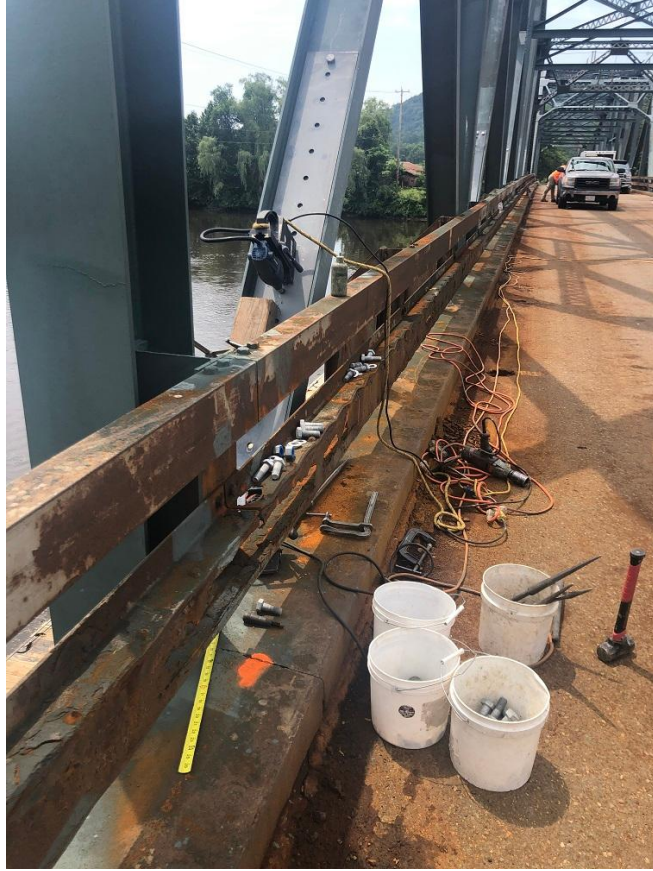
What to Expect this Month

Crews will focus on structural steel repairs on the upper portion of the truss bridge to address rust deterioration. After the sandblasting operations, new steel plates and angles will be fitted to holes and significant pitting caused by rust action on the steel members. The areas will be repaired by bolting new plates and angles to the existing truss members. Crews will also identify any new areas of concern which are revealed by the sandblasting operations.

The contractor, New England Infrastructure, will also complete repairs to the pier. The pier work includes chipping deteriorated concrete areas behind the reinforcing steel and then replacing the concrete to create a new surface and protect the reinforcing steel.

Check out a selection of progress photos below!

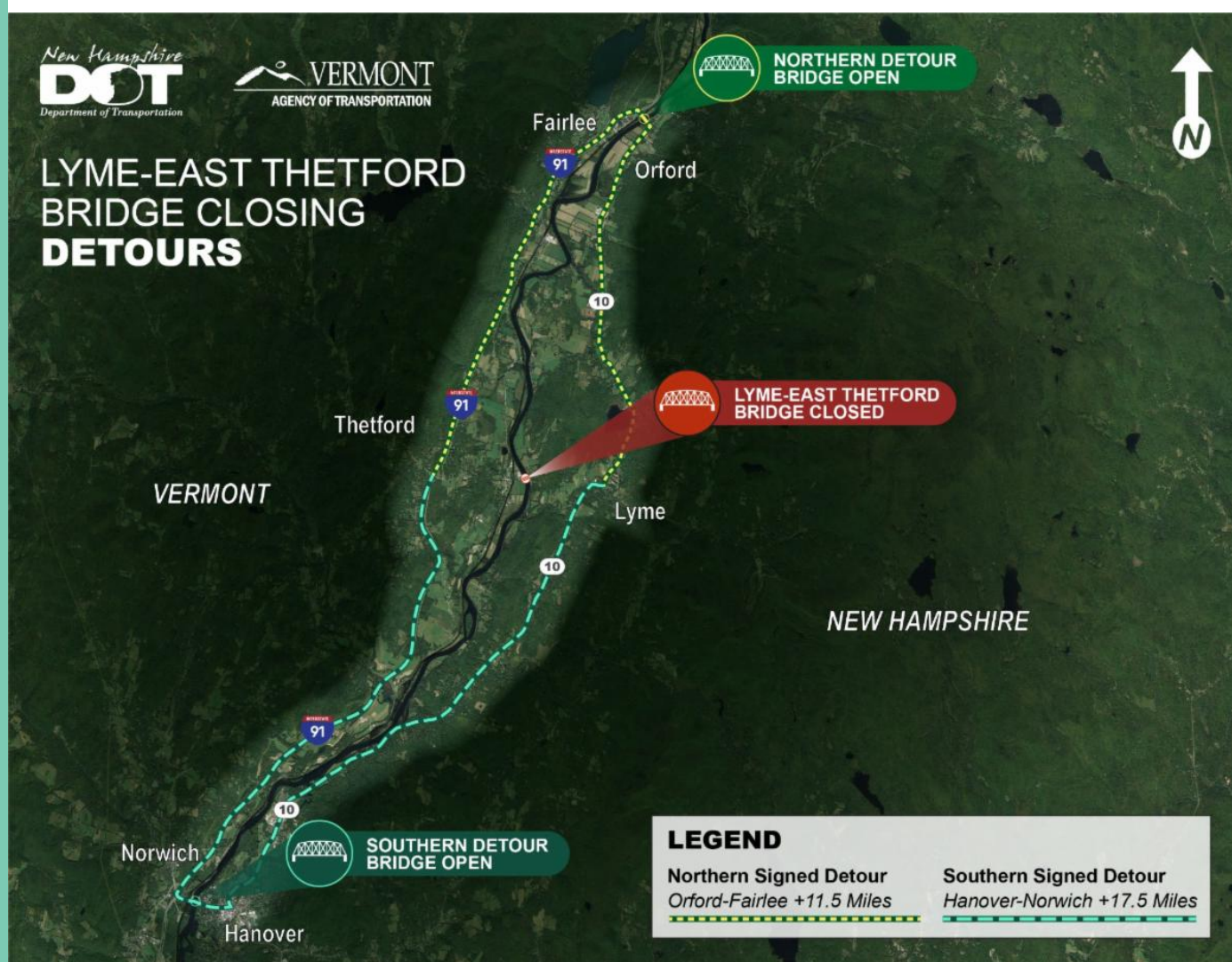




Detour Reminder

Throughout the 18-month Lyme-East Thetford bridge closure, there are two NHDOT signed detour routes in place. A detour route to the north takes vehicles along NH Route 10, then crosses the Connecticut River between Orford, NH and Fairlee, VT and continues along Interstate 91 south in Vermont. The other detour route to the south takes vehicles along NH Route 10, then crosses the Connecticut River between Hanover, NH and Norwich, VT and continues along Interstate 91 north in Vermont.

Businesses on either side of the bridge remain open for business!



Keep In Touch

If you have any questions, please contact the project team. The project email address can be found below or on the [project website](#).

Contact Us
info@LymeThetfordbridge.com

[Project Website](#)



Try email marketing for free today!