

SHARE:

[Join Our Email List](#)

Monthly Project Newsletter

January 2024

NHDOT PROJECT WEBSITE

CONTACT THE TEAM

Lyme-East Thetford Bridge 14460 Rehabilitation Project



As we usher in 2024, we know we must plan for a few more months of winter weather, but the frosty weather won't slow down the Lyme-East Thetford Bridge Rehabilitation team. Work continues to progress!

As a reminder, the bridge and work area are closed to motorists, pedestrians, and bicyclists 24 hours a day, seven days a week. This closure is in place for everyone's safety.

Project Milestones

Crews have completed the majority of the repairs on the upper and lower truss. Crews are waiting on additional structural steel to complete the remainder of the necessary bridge repairs.

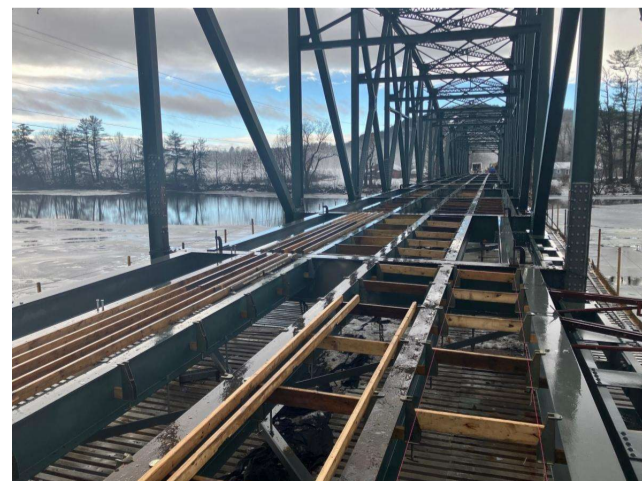
What to Expect this Month

Crews will continue formwork on the bridge deck. This work is required to place the bridge deck concrete in the springtime when the weather allows. The "rat-a-tat-tat" noise from structural steel repairs is not expected over the next couple of weeks as crews wait for the additional structural steel.

New progress photos are below!



Deck formwork progress



Deck formwork progress



Structural steel repair



Pier work



Deck formwork

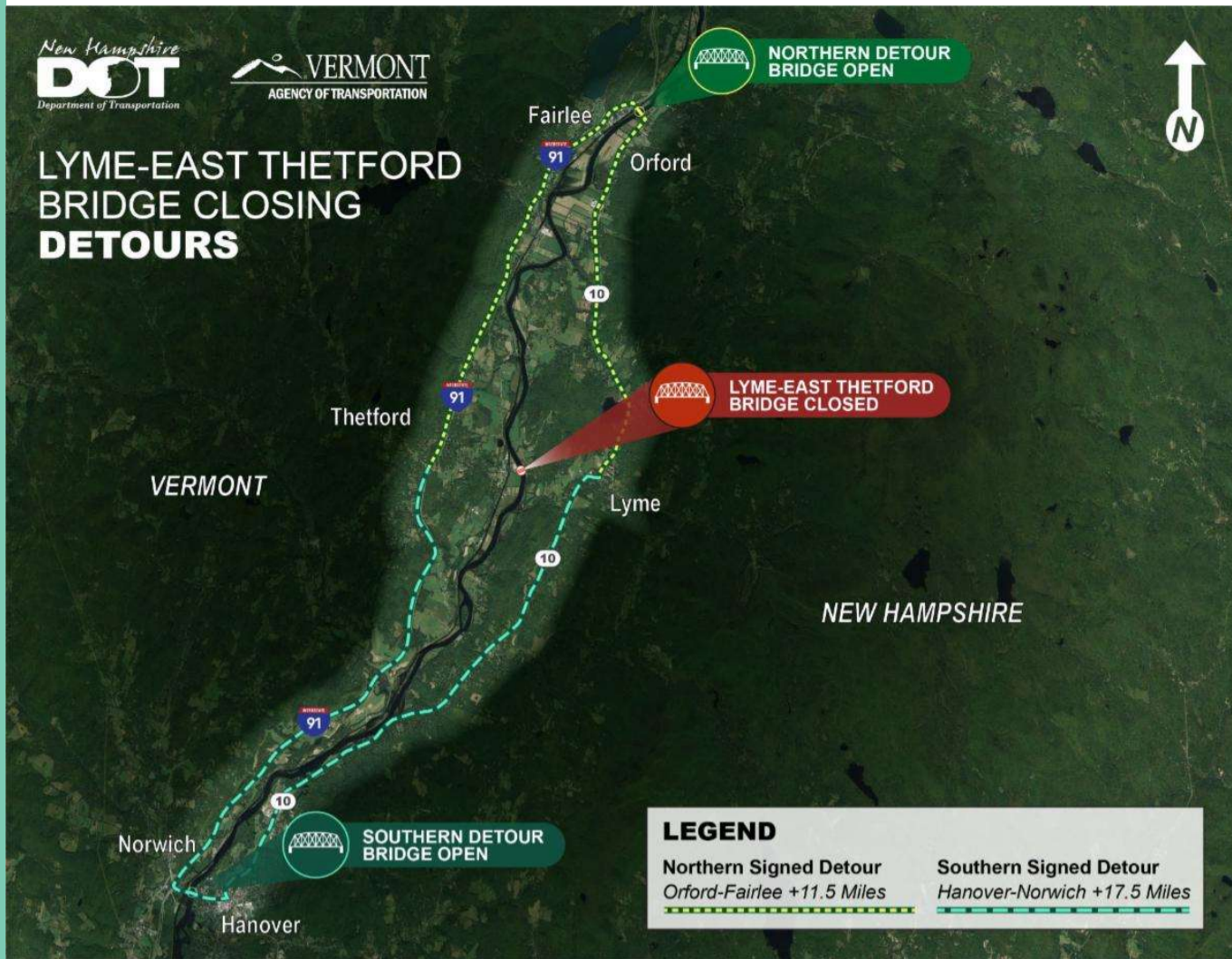


Lattice replacement

Detour Reminder

Throughout the 18-month Lyme-East Thetford bridge closure, there are two NHDOT signed detour routes in place. A detour route to the north takes vehicles along NH Route 10, then crosses the Connecticut River between Orford, NH and Fairlee, VT and continues along Interstate 91 south in Vermont. The other detour route to the south takes vehicles along NH Route 10, then crosses the Connecticut River between Hanover, NH and Norwich, VT and continues along Interstate 91 north in Vermont.

Businesses on either side of the bridge remain open for business!



Have Questions? Contact the Project Team

If you have any questions throughout the project, please reach out to the project team. The project email address can be found below or on the [project website](#).

Contact Us
info@LymeThetfordbridge.com

[Project Website](#)

The New Hampshire Department of Transportation | 7 Hazen Drive, Concord, NH 03301

[Unsubscribe info@lymethetfordbridge.com](#)

[Update Profile](#) | [Constant Contact Data Notice](#)

Sent by info@lymethetfordbridge.com powered by



Try email marketing for free today!