

SHARE:

[Join Our Email List](#)

Monthly Project Newsletter

October 2023

NHDOT PROJECT WEBSITE

CONTACT THE TEAM

## Lyme-East Thetford Bridge 14460 Rehabilitation Project



The bright fall colors, the crisp autumn air, and the rat-a-tat-tat sounds of rivet removal are now part of the day-to-day on the Lyme-East Thetford Bridge Rehabilitation Project. Read on to learn more about project milestones and upcoming work.

***The project team reminds everyone that the bridge and work area are closed to motorists, pedestrians, and bicyclists 24 hours a day, seven days a week. This closure is in place for everyone's safety.***

### Project Milestones

Crews have completed the demolition of the backwalls, and they are continuing the demolition of the concrete deck. Crews have completed a portion of structural steel repairs for the floor beams and exterior stringers. Rivet removal is also ongoing, which may be heard throughout the project area. These rivets will be replaced with new bolts.

### What to Expect this Month

Throughout the fall and into winter, crews expect to continue working on structural steel repairs and formwork as part of the new bridge deck construction.

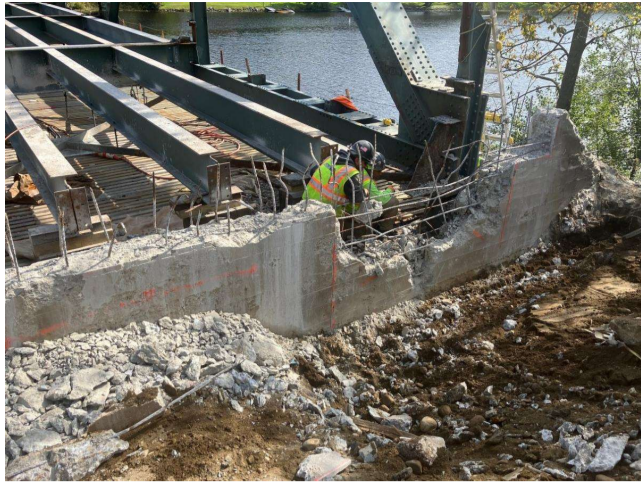
***New progress photos are below!***



*Demolition activities*



*Demolition activities*



Demolition of the backwall for concrete repairs



Cleaning at the bridge entrance after demolition activities



Setting of bridge floor beams

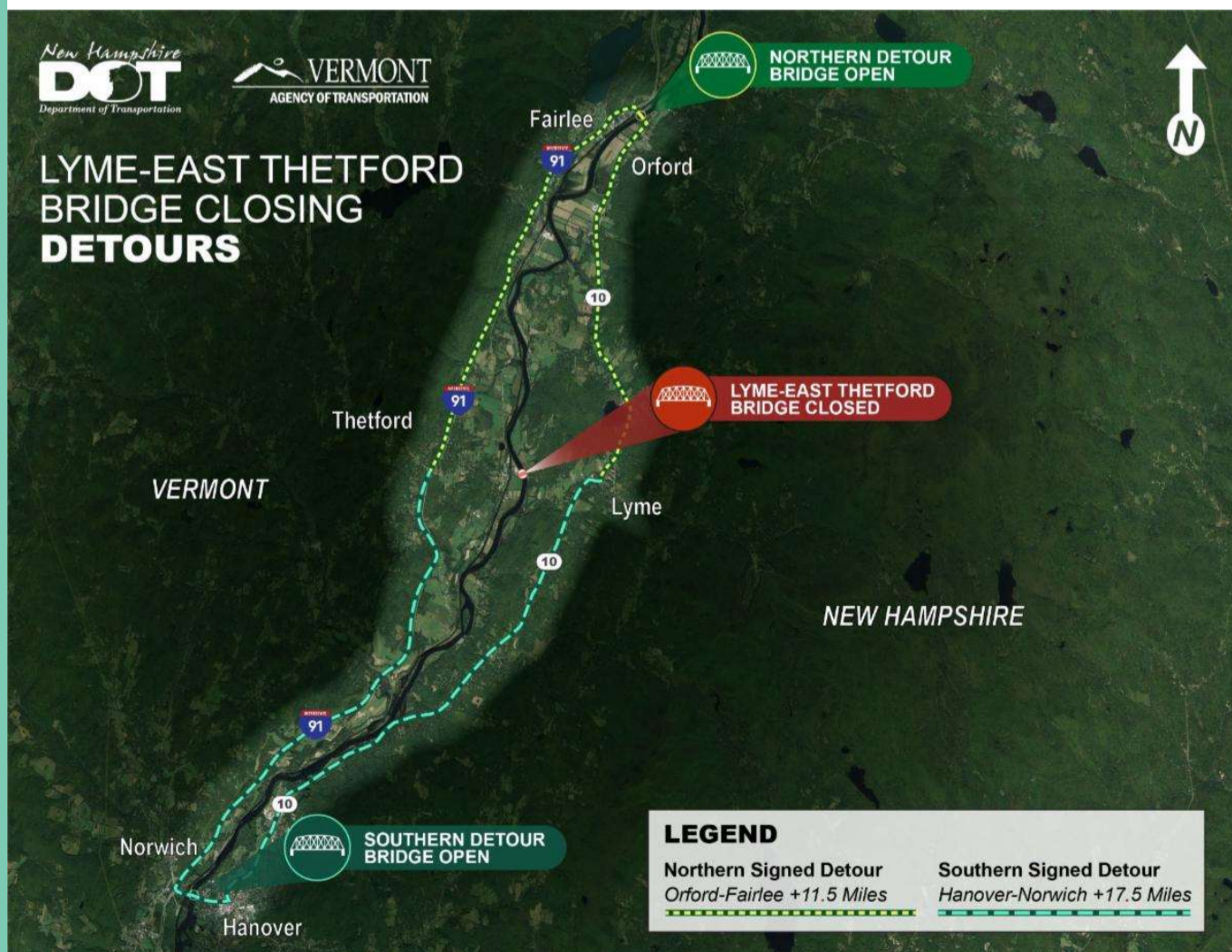


Structural steel repairs

## Detour Reminder

Throughout the 18-month Lyme-East Thetford bridge closure, there are two NHDOT signed detour routes in place. A detour route to the north takes vehicles along NH Route 10, then crosses the Connecticut River between Orford, NH and Fairlee, VT and continues along Interstate 91 south in Vermont. The other detour route to the south takes vehicles along NH Route 10, then crosses the Connecticut River between Hanover, NH and Norwich, VT and continues along Interstate 91 north in Vermont.

**Businesses on either side of the bridge remain open for business!**



Keep In Touch

If you have any questions throughout the project, please reach out to the project team. The project email address can be found below or on the [project website](#).

---

**Contact Us**  
[info@LymeThefordbridge.com](mailto:info@LymeThefordbridge.com)

[Project Website](#)

---

The New Hampshire Department of Transportation | 7 Hazen Drive, Concord, NH 03301

[Unsubscribe info@lymethetfordbridge.com](#)

[Update Profile](#) | [Constant Contact Data Notice](#)

Sent by info@lymethetfordbridge.com powered by



Try email marketing for free today!