

[NHDOT PROJECT WEBSITE](#)

[CONTACT THE TEAM](#)

Lyme-East Thetford Bridge 14460 Rehabilitation Project



The Lyme-East Thetford Bridge Rehabilitation team is closing out 2023 strong. The team will be working through the winter months to keep the project on schedule.

The project team reminds everyone that the bridge and work area are closed to motorists, pedestrians, and bicyclists 24 hours a day, seven days a week. This closure is in place for everyone's safety.

Our team would like to extend to you our warmest holiday wishes and we wish everyone a very Happy New Year!

Project Milestones

Crews have been working on the bridge's structural steel, including stripping the pier concrete forms and rivet removal. Rivet removal activities result in the "rat-a-tat-tat" sounds that can be heard intermittently throughout the project area.

What to Expect this Month

Structural steel work will continue through the end of 2023. Once the structural steel activities are complete, crews plan to begin the deck replacement work in January. Deck replacement activities will continue through Spring. Crews will also be removing the dock system from the river.

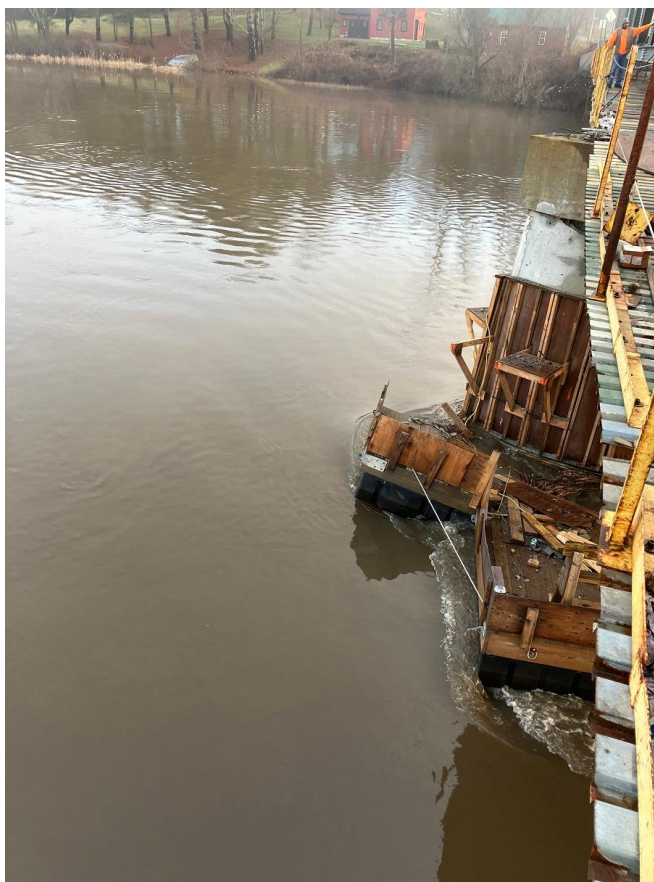
A few new progress photos are below!



Cross bracing repair



End post repair



View of the dock when water levels have risen

Detour Reminder

Throughout the 18-month Lyme-East Thetford bridge closure, there are two NHDOT signed detour routes in place. A detour route to the north takes vehicles along NH Route 10, then crosses the Connecticut River between Orford, NH and Fairlee, VT and continues along Interstate 91 south in Vermont. The other detour route to the south takes vehicles along NH Route 10, then crosses the Connecticut River between Hanover, NH and Norwich, VT and continues along Interstate 91 north in Vermont.

Businesses on either side of the bridge remain open for business!