

Governor's Advisory Commission on Intermodal Transportation



Transportation excellence enhancing the quality of life in New Hampshire

2025-2034 Ten Year Plan Kickoff Meeting
Supplement Maps

June 28, 2023

Table of Contents

Maps

Tiers 1 & 2 Highways 1

Tiers 3 & 4 Highways 2

Public Use Airports 3

Public Transit Services..... 4

Active Railroads 5

State-Owned Rail Trails 6

Turnpikes 7

Federal Aid Eligible Roads 8

State of New Hampshire Urbanized Areas 9

Congressional Districts 10


Executive Council Districts..... 11


RPC Districts 12

Tier 1 & 2 Highways

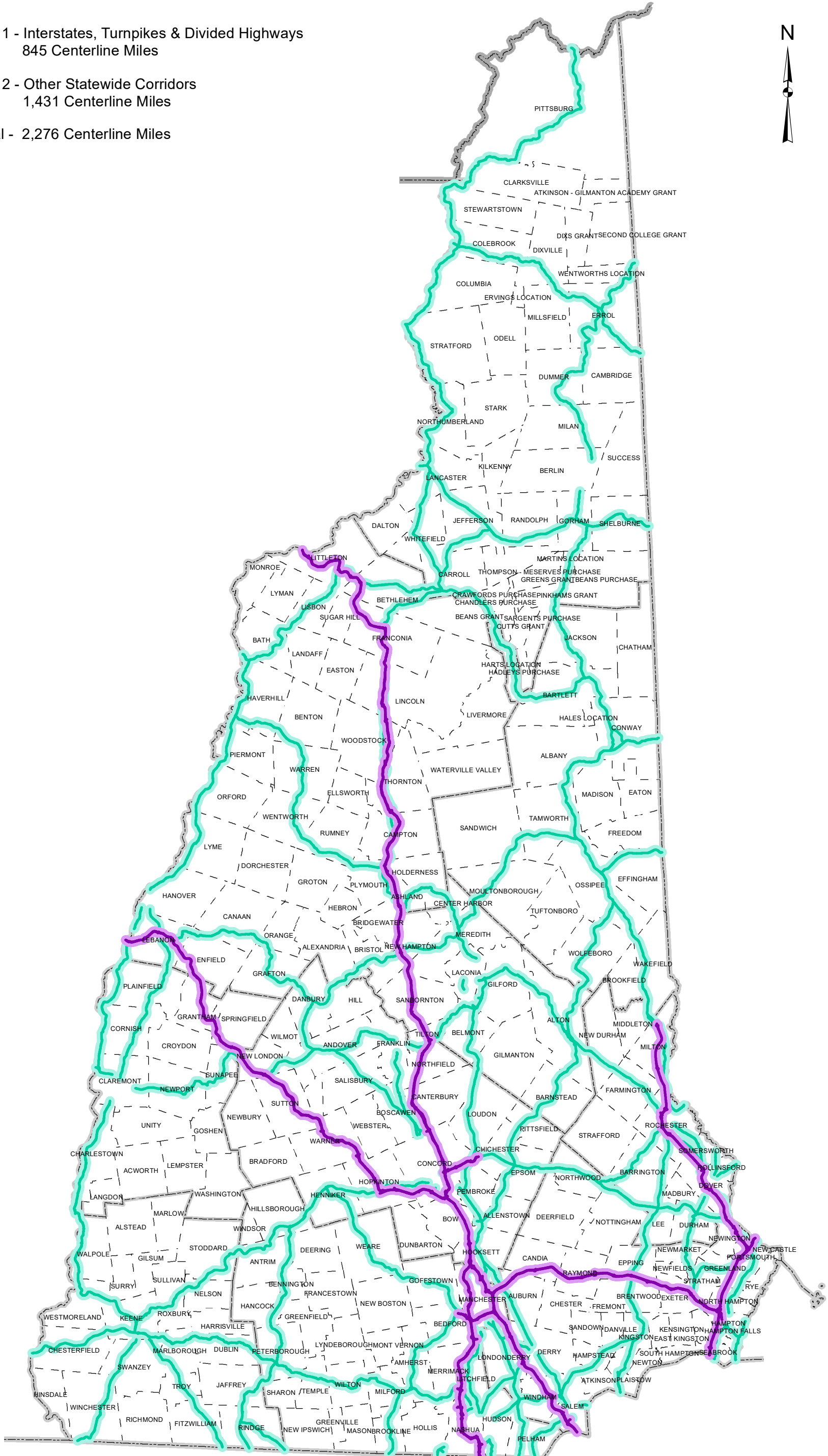
Interstate & Other Statewide Transportation Corridors



 Tier 1 - Interstates, Turnpikes & Divided Highways
845 Centerline Miles

 Tier 2 - Other Statewide Corridors
1,431 Centerline Miles


Total - 2,276 Centerline Miles




Tier 3 & 4 Highways

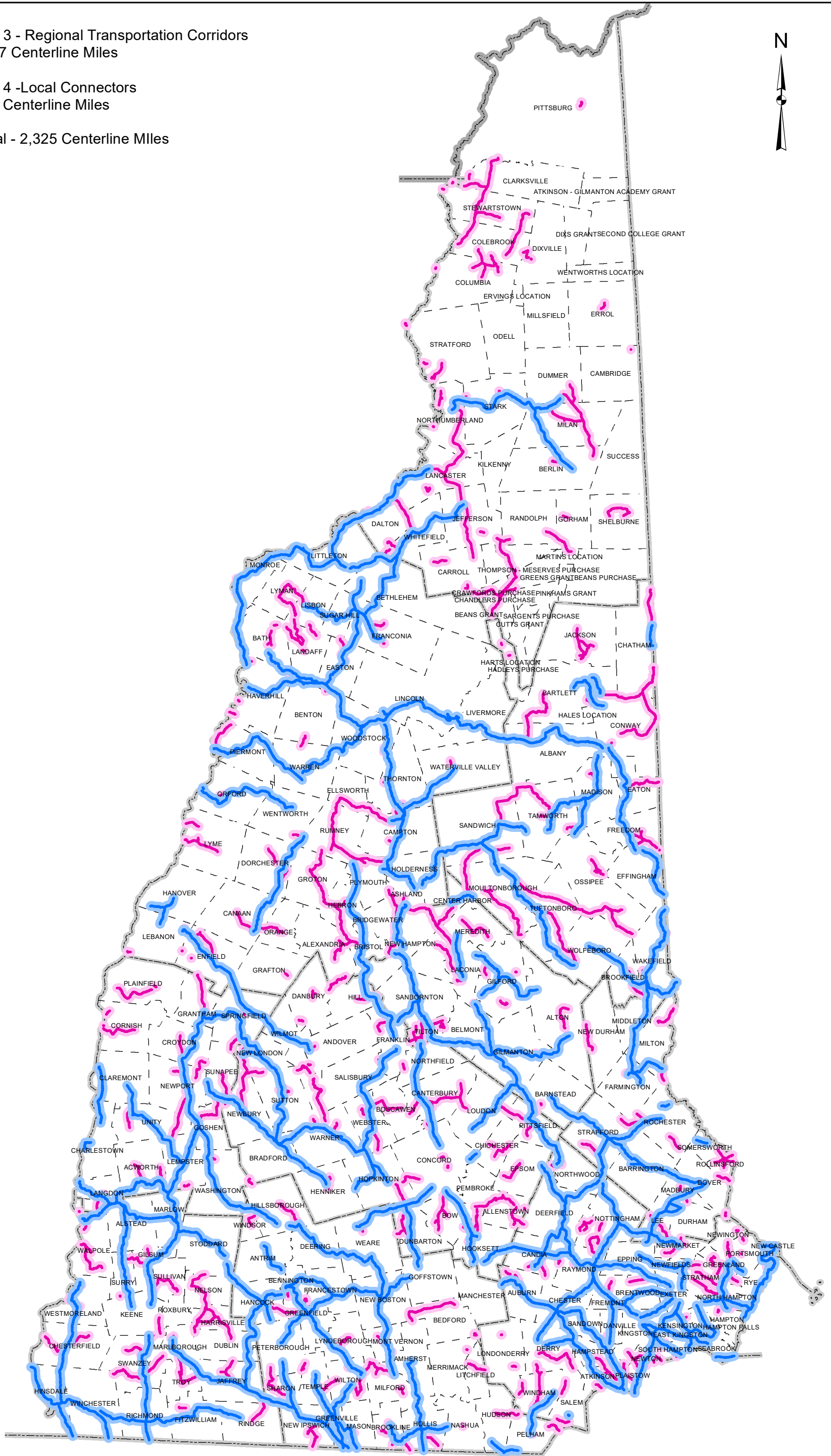
Regional Transportation Corridors & Local Connectors



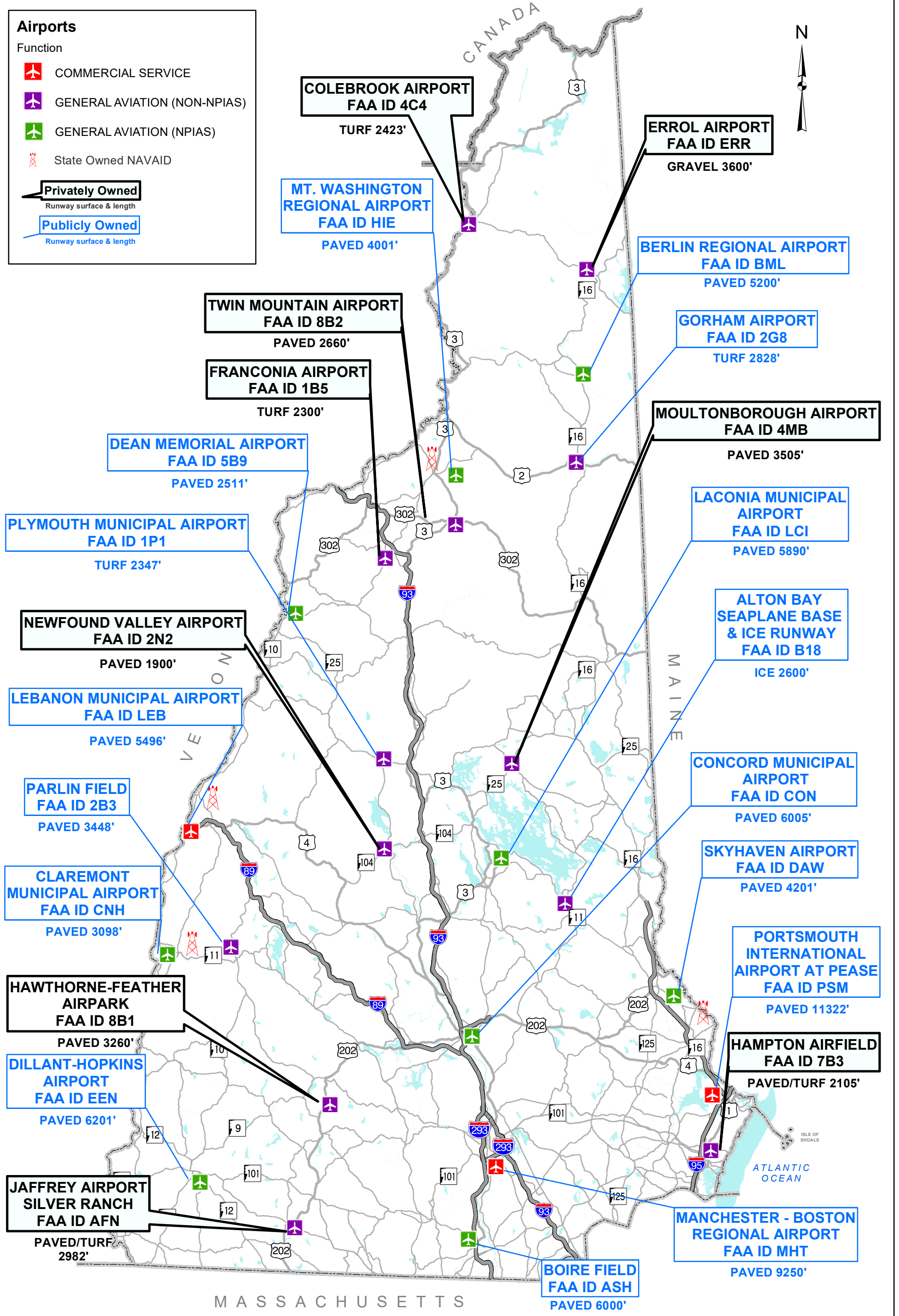
 Tier 3 - Regional Transportation Corridors
1437 Centerline Miles

 Tier 4 - Local Connectors
888 Centerline Miles

Total - 2,325 Centerline Miles



Public Use Airports



Public Transit Services

Local Transit Provider Service Areas

- 1 North Country Transit
- 2 Carroll County Transit
- 3 Advance Transit
- 4 Sullivan County Transportation
- 5 Concord Area Transit
- 6 COAST
- 7 Wildcat Transit
- 8 Manchester Transit Authority
- 9 Keene City Express
- 10 CART
- 11 Nashua Transit System

Intercity Bus Routes

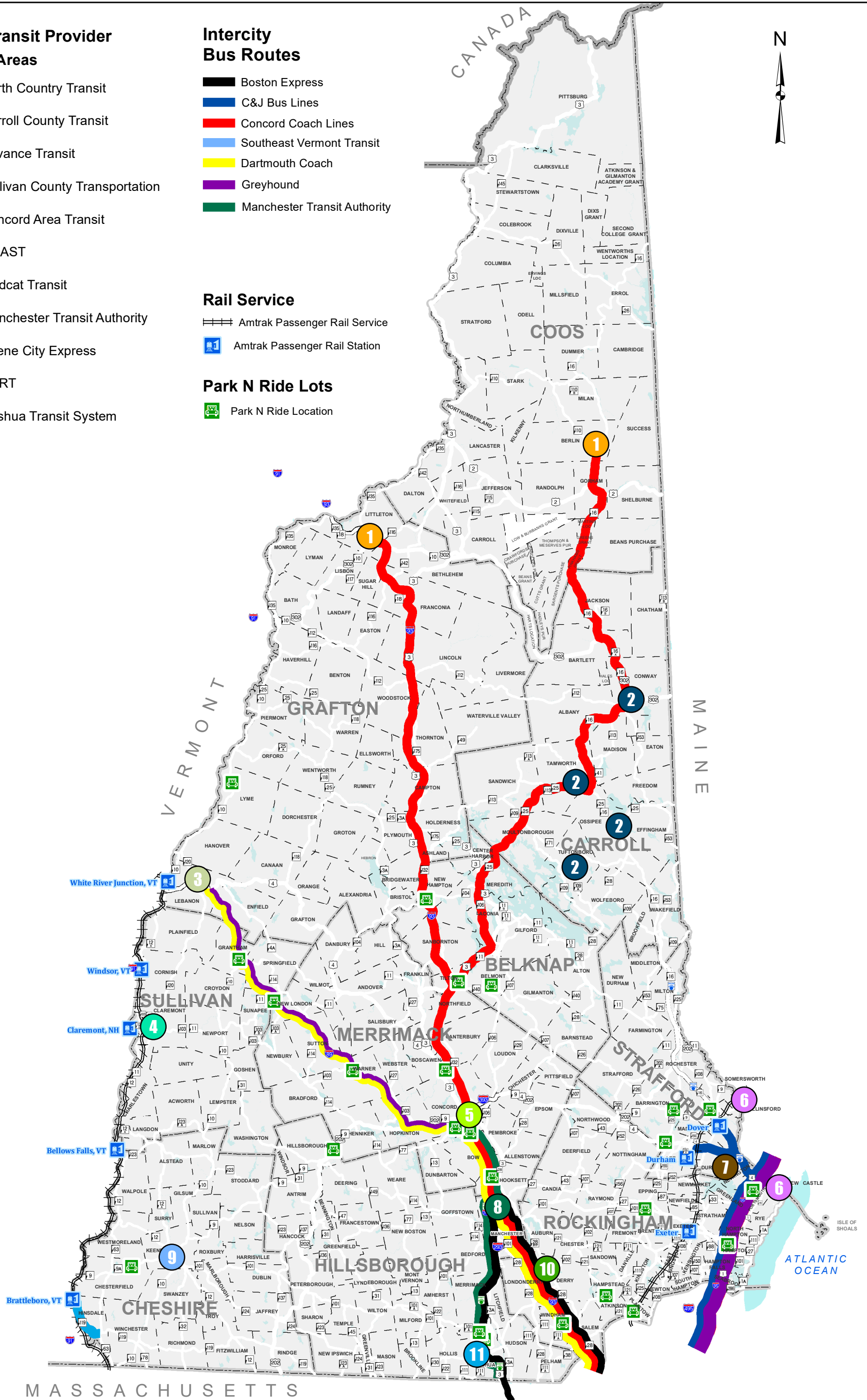
- Boston Express
- C&J Bus Lines
- Concord Coach Lines
- Southeast Vermont Transit
- Dartmouth Coach
- Greyhound
- Manchester Transit Authority

Rail Service

- Amtrak Passenger Rail Service
- Amtrak Passenger Rail Station

Park N Ride Lots

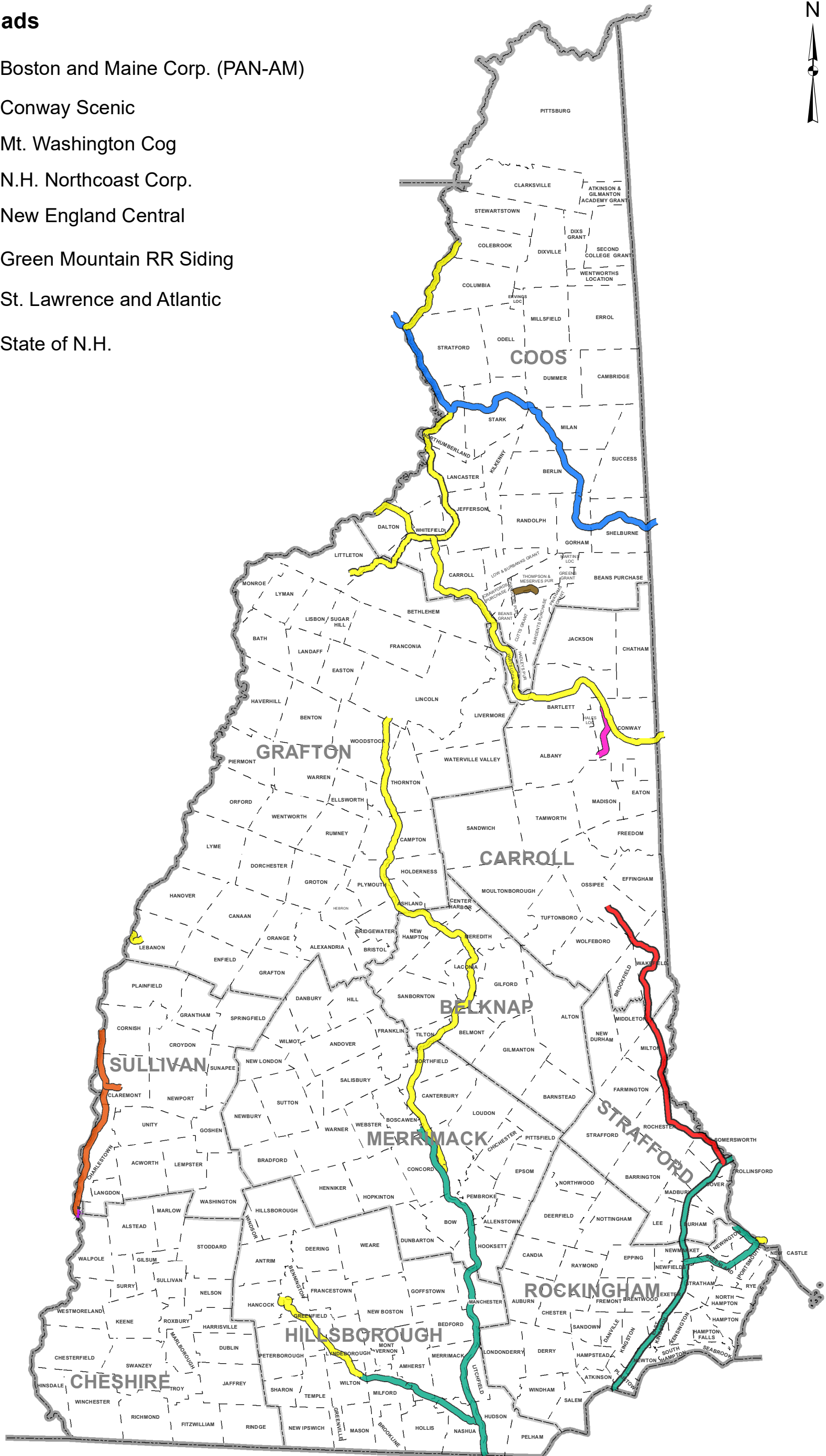
- Park N Ride Location



Active Railroads

Railroads

- Boston and Maine Corp. (PAN-AM)
- Conway Scenic
- Mt. Washington Cog
- N.H. Northcoast Corp.
- New England Central
- Green Mountain RR Siding
- St. Lawrence and Atlantic
- State of N.H.





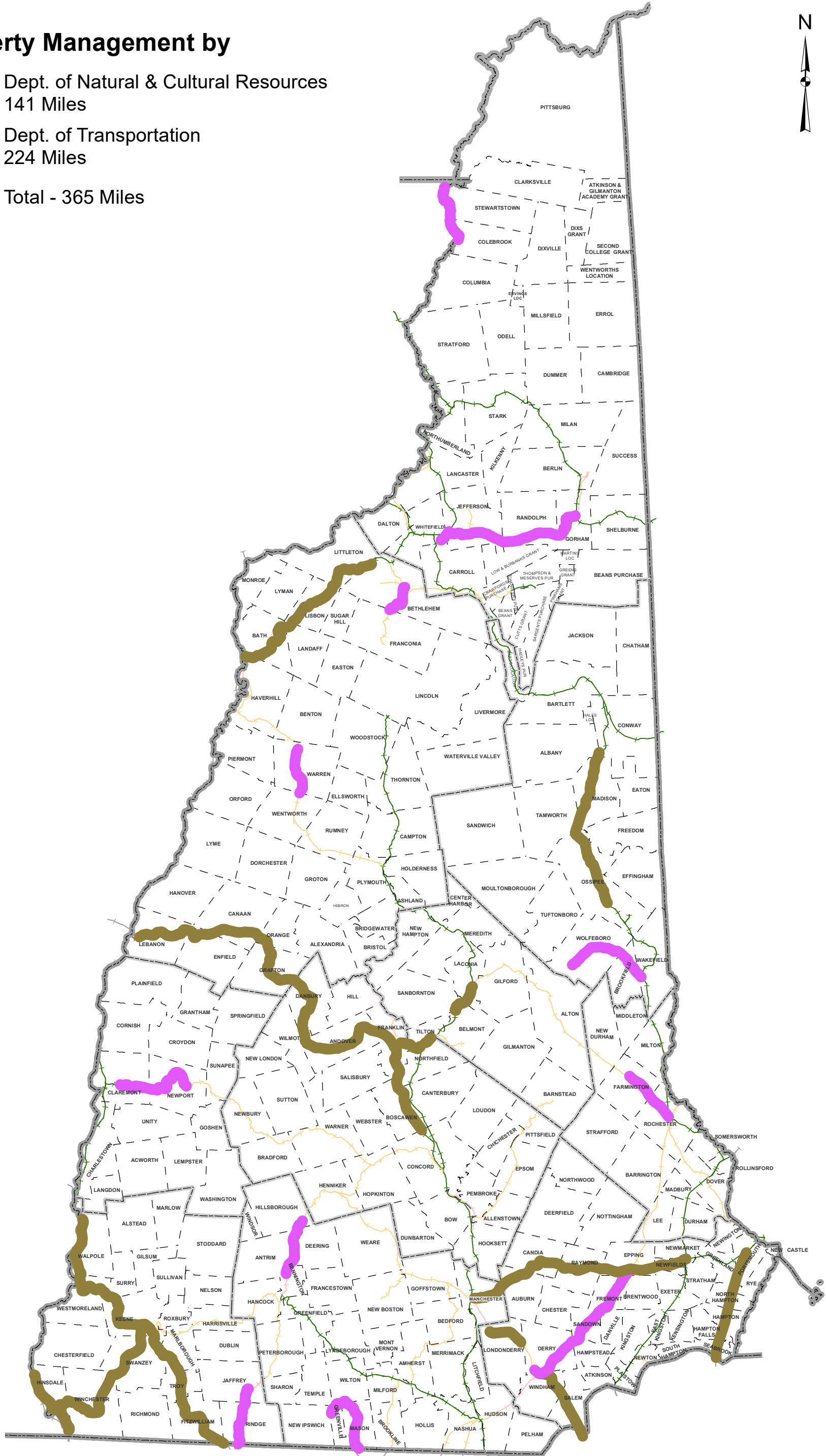
State-Owned Rail Trails

Available for Public Use

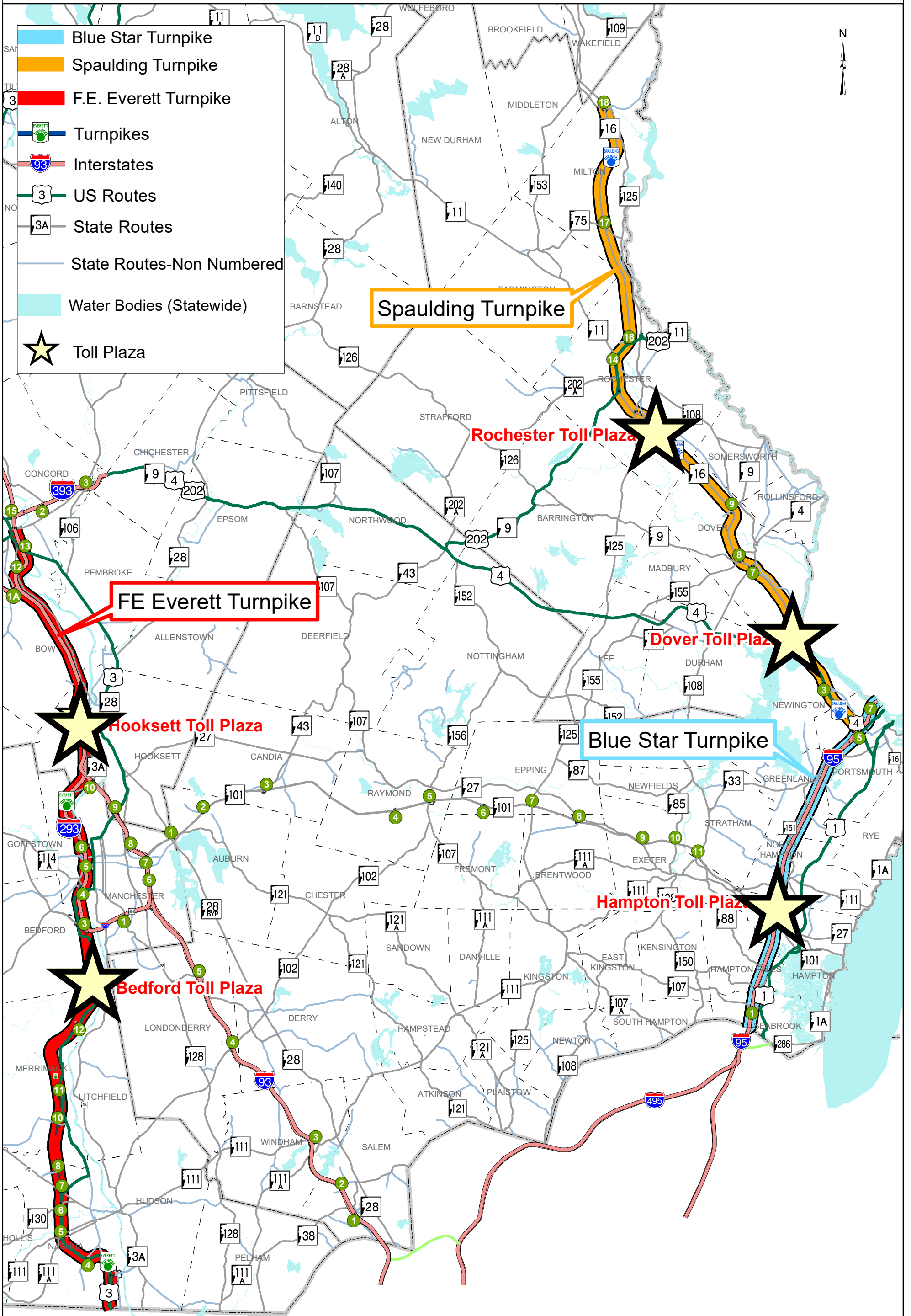


Property Management by

-  Dept. of Natural & Cultural Resources
141 Miles
 -  Dept. of Transportation
224 Miles
- Total - 365 Miles



Turnpikes



Federal Aid Eligible Roads

2023

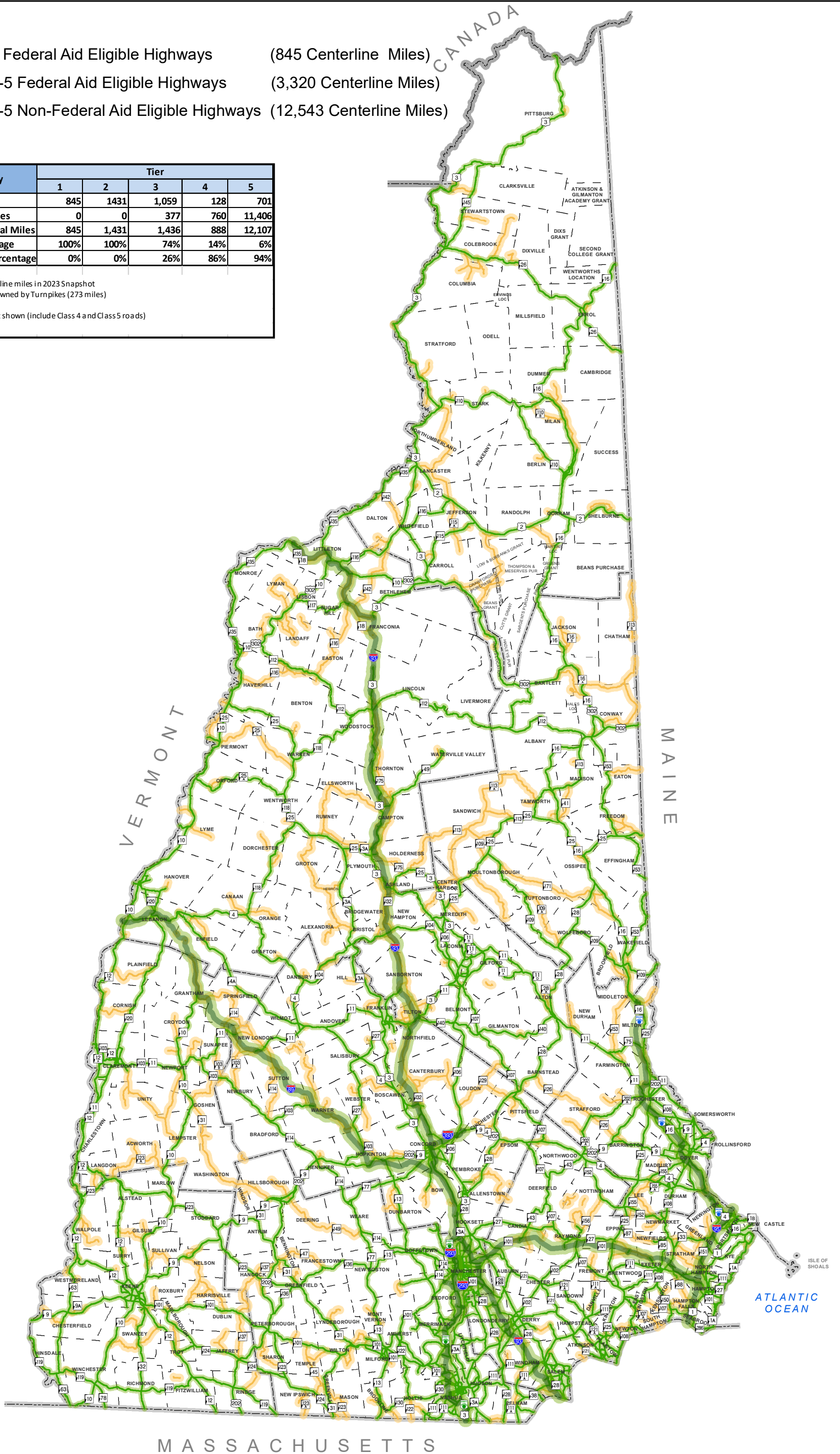


Legend

- Tier 1 Federal Aid Eligible Highways (845 Centerline Miles)
- Tier 2-5 Federal Aid Eligible Highways (3,320 Centerline Miles)
- Tier 1-5 Non-Federal Aid Eligible Highways (12,543 Centerline Miles)

Fed Aid Eligibility	Tier				
	1	2	3	4	5
Fed Aid Eligible Miles	845	1431	1,059	128	701
Non Fed Aid Eligible Miles	0	0	377	760	11,406
Total Miles	845	1,431	1,436	888	12,107
Fed Aid Eligible Percentage	100%	100%	74%	14%	6%
Non-Fed Aid Eligible Percentage	0%	0%	26%	86%	94%

Notes: 1. Based on centerline miles in 2023 Snapshot
 2. Includes miles owned by Turnpikes (273 miles)
 3. Includes Ramps
 4. Tier 5 Roads not shown (include Class 4 and Class 5 roads)

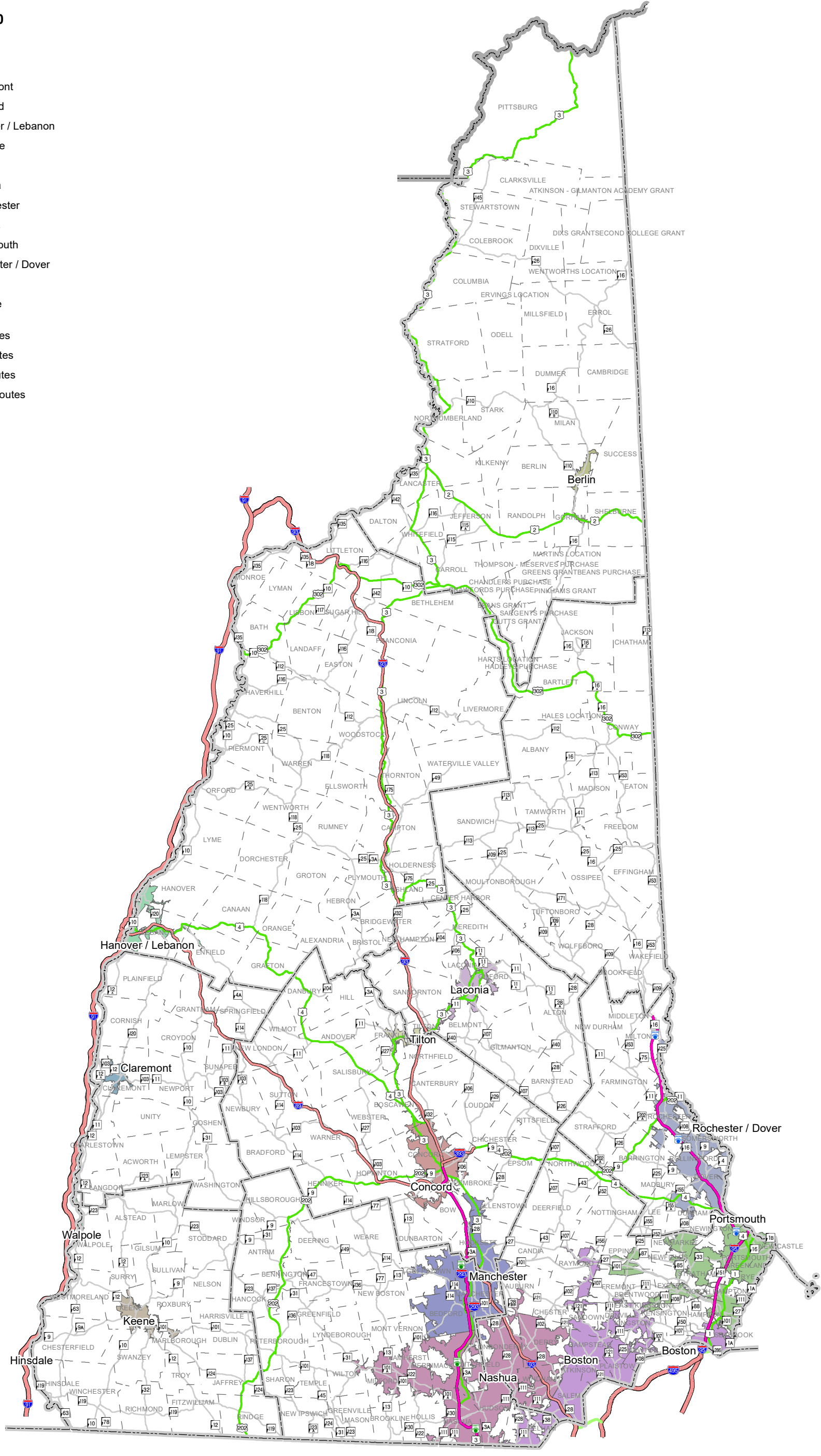


State of New Hampshire

Urbanized Areas

Urban 2010

- Berlin
- Boston
- Claremont
- Concord
- Hanover / Lebanon
- Hinsdale
- Keene
- Laconia
- Manchester
- Nashua
- Portsmouth
- Rochester / Dover
- Tilton
- Walpole
- Turnpikes
- Interstates
- US Routes
- State Routes

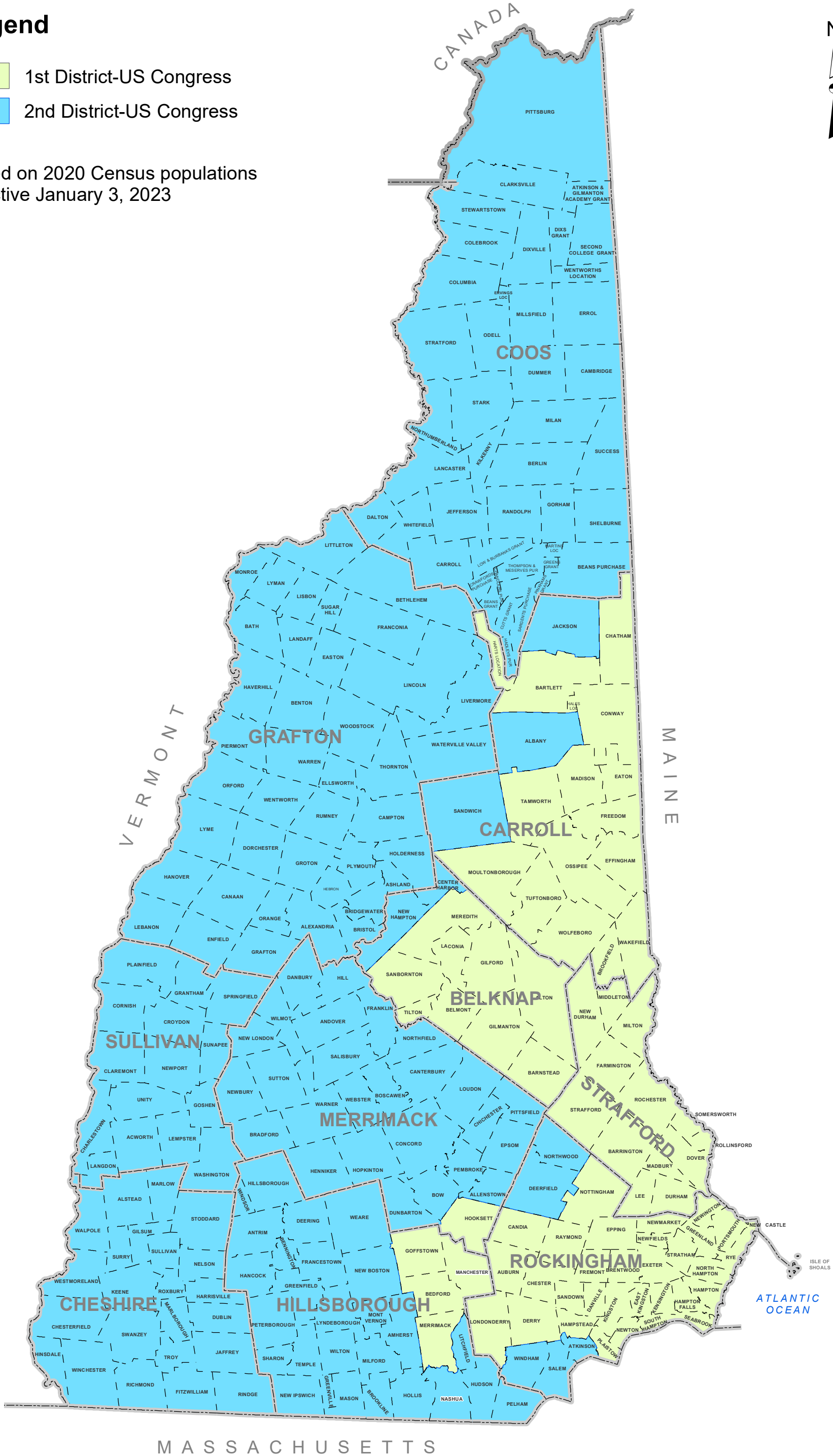


Congressional Districts

Legend

- 1st District-US Congress
- 2nd District-US Congress

Based on 2020 Census populations
 Effective January 3, 2023



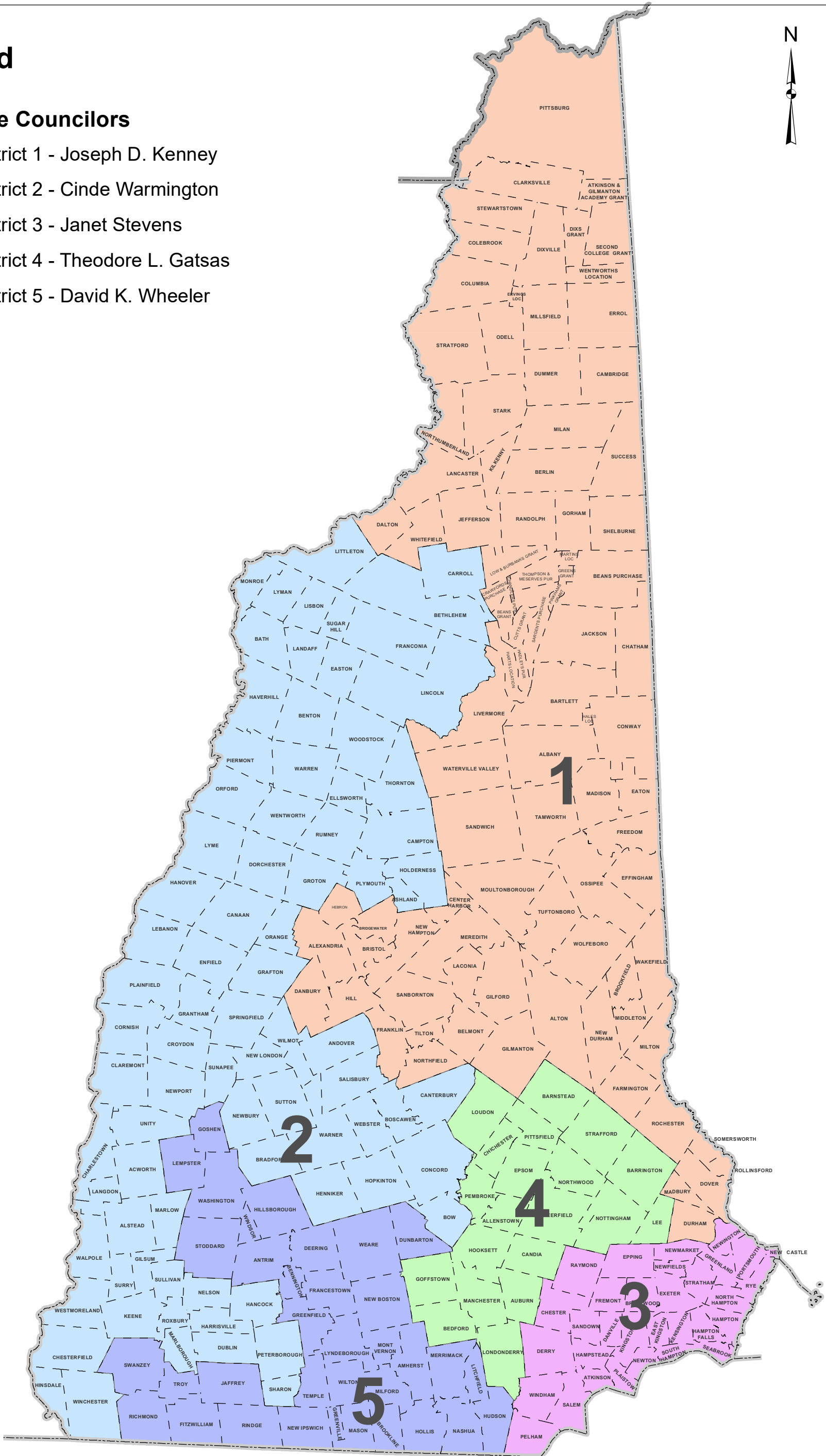
MASSACHUSETTS

Executive Council Districts

Legend

Executive Councilors

- District 1 - Joseph D. Kenney
- District 2 - Cinde Warmington
- District 3 - Janet Stevens
- District 4 - Theodore L. Gatsas
- District 5 - David K. Wheeler



Regional Planning Commissions

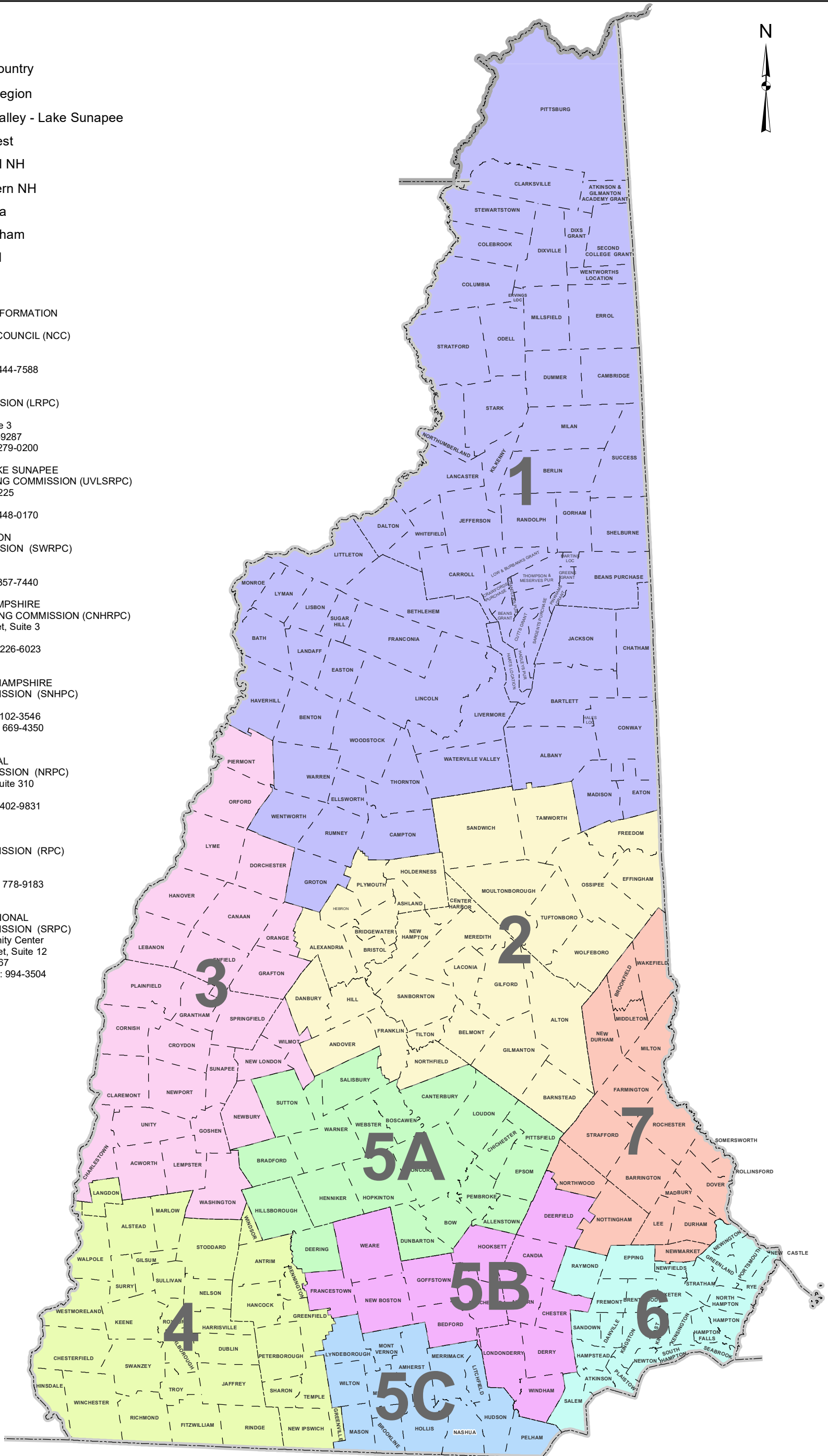


Legend

- 1 North Country
- 2 Lakes Region
- 3 Upper Valley - Lake Sunapee
- 4 Southwest
- 5A Central NH
- 5B Southern NH
- 5C Nashua
- 6 Rockingham
- 7 Strafford

CONTACT INFORMATION

- 1) NORTH COUNTRY COUNCIL (NCC)
161 Main St.
Littleton, NH 03561
Tel: 444-6303 Fax: 444-7588
- 2) LAKES REGION PLANNING COMMISSION (LRPC)
Humiston Building
103 Main Street, Suite 3
Meredith, NH 03253-9287
Tel: 279-8171 Fax: 279-0200
- 3) UPPER VALLEY-LAKE SUNAPEE REGIONAL PLANNING COMMISSION (UVLSRPC)
10 Water Street Suite 225
Lebanon, NH 03766
Tel: 448-1680 Fax: 448-0170
- 4) SOUTHWEST REGION PLANNING COMMISSION (SWRPC)
37 Ashuelot St
Keene, NH 03431
Tel: 357-0557 Fax: 357-7440
- 5A) CENTRAL NEW HAMPSHIRE REGIONAL PLANNING COMMISSION (CNHRPC)
28 Commercial Street, Suite 3
Concord, NH 03301
Tel: 226-6020 Fax: 226-6023
- 5B) SOUTHERN NEW HAMPSHIRE PLANNING COMMISSION (SNHPC)
438 Dubuque Street
Manchester, NH 03102-3546
Tel: 669-4664 Fax: 669-4350
- 5C) NASHUA REGIONAL PLANNING COMMISSION (NRPC)
30 Temple Street, Suite 310
Nashua, NH 03060
Tel: 417-6570 Fax: 402-9831
- 6) ROCKINGHAM PLANNING COMMISSION (RPC)
156 Water Street
Exeter, NH 03833
Tel: 778-0885 Fax: 778-9183
- 7) STRAFFORD REGIONAL PLANNING COMMISSION (SRPC)
Rochester Community Center
150 Wakefield Street, Suite 12
Rochester, NH 03867
Tel: 994-3500 Fax: 994-3504



Mission: Transportation excellence enhancing the quality of life in New Hampshire.

Purpose: Transportation excellence in New Hampshire is fundamental to the state's sustainable economic development and land use, enhancing the environment, and preserving the unique character and quality of life. The Department will provide safe and secure mobility and travel options for all of the state's residents, visitors, and goods movement, through a transportation system and services that are well maintained, efficient, reliable, and provide seamless interstate and intrastate connectivity.

Vision: To increase safety, reliability and multimodal travel options that link rural and urban communities through an interconnected highway network, airport system, transit, rail and active transportation services. To be stewards of New Hampshire's transportation system, providing increased mobility, encouraging smart growth and supporting economic development. To further reduce transportation's impact on the State's natural, cultural and social resources, ensuring that transportation enhances the quality of life in New Hampshire. To secure dedicated and sustainable revenue streams for transportation that will allow the Department to plan and deploy its diverse human and financial resources effectively, ensuring the system is maintained in a good state of repair. To embrace innovation in planning, designing, constructing, operating and maintaining the transportation system, increasing efficiency, enhancing safety, and meeting the Transportation needs of the future.

Christopher T. Sununu, Governor

Executive Councilors:

- Joseph D. Kenney - District 1
- Cinde Warmington - District 2
- Janet Stevens - District 3
- Theodore L. Gatsas - District 4
- David K. Wheeler - District 5

New Hampshire Department of Transportation
7 Hazen Drive
Concord, New Hampshire 03302-0483
www.nhdot.com

