

New Hampshire EV Infrastructure

Phase 1 RFP

Pre-Release Webinar

Sep. 11, 2023



Agenda

- Introduction
- Location Maps
- How to apply
- Questions



Disclaimer

All information provided in this webinar is subject to change as the Request for Proposal is not finalized.

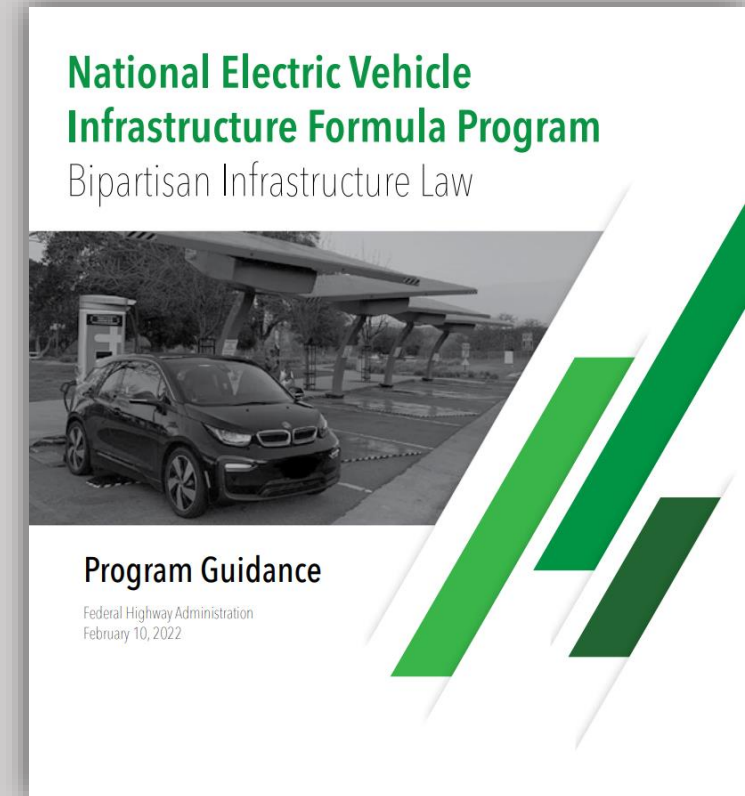
The Request for Proposal will provide final guidelines.

NHDOT NEVI RFP - Introduction

BIL: EV Infrastructure Programs

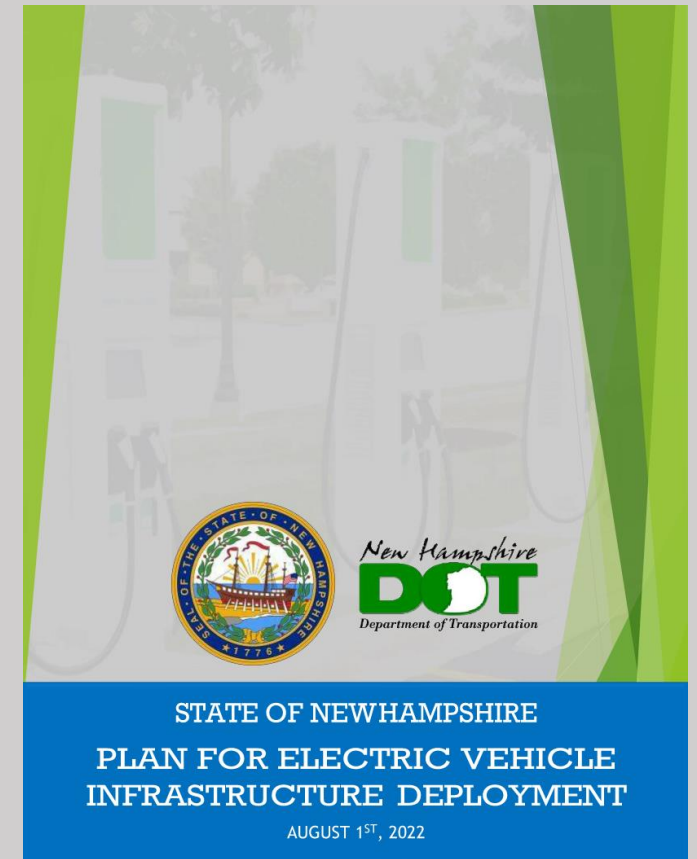
\$5 billion NEVI formula funding (\$1B per year over five years)

- DCFC every 50 miles and within 1 travel mile from the highway
- \geq four 150 kW DC output fast chargers with CCS ports capable of simultaneously charging four EVs
 - NHDOT considering NACS ports as well
- NH 5-year formula funding = \$17,271,581
 - **FY 22 formula funding = \$2,556,450**
 - **FY 23 formula funding = \$3,678,760**
 - NH FY 24-26 formula funding = ~\$3.68M (ant.)
- Cost-share: 80% federal – 20% private funds



NEVI Plan

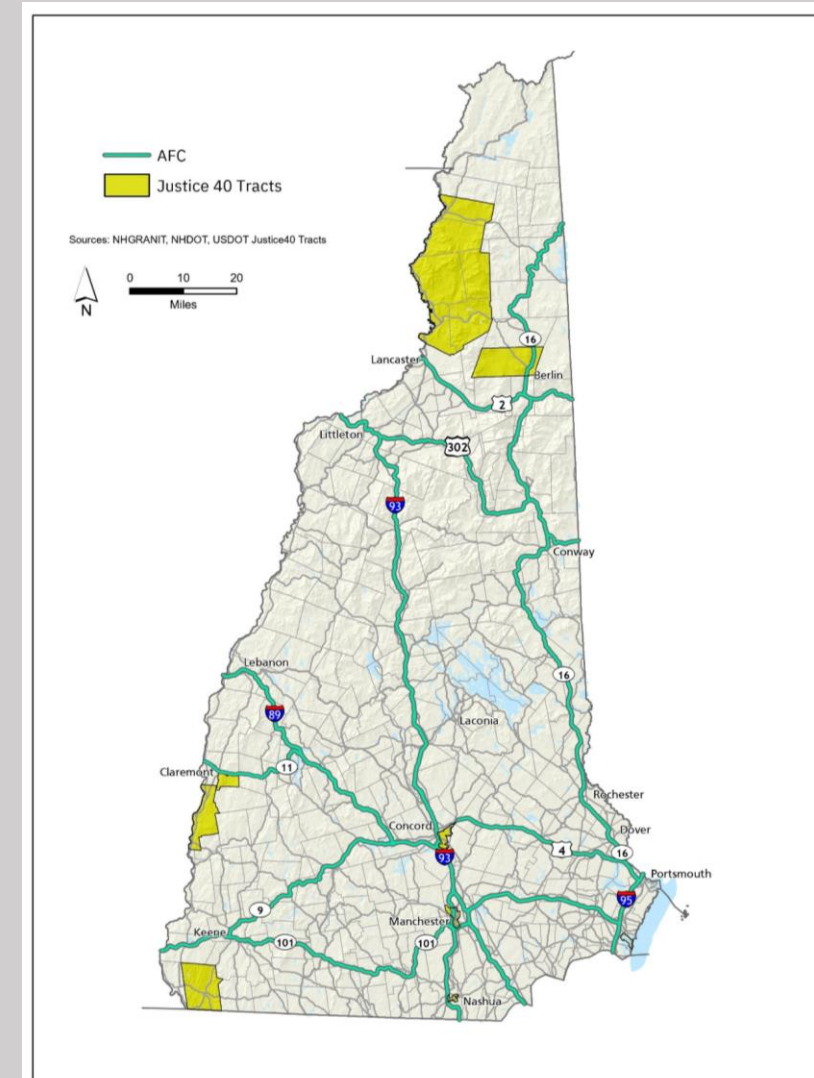
- Submitted on August 1, 2022
- Approved on September 14, 2022
- Updated Plan submitted to FHWA on August 1, 2023
- 23 CFR 680 Final Rule and Buy America Waiver provided on February 15, 2023
- **Plan Vision:** “Strategically deploy an interconnected and equitable network of public electric vehicle charging infrastructure to encourage electric vehicle travel, maintain economic competitiveness, and stimulate public-private sector collaboration in the State of New Hampshire.”
- <https://www.dot.nh.gov/sites/g/files/ehbemt811/files/inline-documents/nh-nevi-charging-deployment-plan-2022-08-01.pdf>



NEVI Plan – Alternative Fuel Corridors

- NH AFCs:

- **I-89 (Entirety)**
- **I-93 (Entirety)**
- I-95 (Entirety)
- US-2 (Entirety)
- **NH-16 (Entirety)**
- Everett Turnpike (Entirety)
- US-4 (I-393 in Pembroke to NH-16 in Dover)
- US-302 (I-93 in Bethlehem to ME Border)
- **NH-9 (VT Border to I-89)**
- NH-11 (NH-12 to I-89 New London)
- NH-12 (VT Border to NH-11)
- NH-101 (Western Terminus to I-95 in Hampton)



Anticipated Schedule – Phase 1 RFP

Pre-Release Webinar	September 11, 2023
Pre-Release Questions Due	September 14, 2023
Pre-Release Responses	September 21, 2023
Release of RFP	September 29, 2023
Pre-Bid Webinar	October 9, 2023
Pre-Bid Questions Due	October 16, 2023
Pre-Bid Responses	October 23, 2023
Proposal Due	December 8, 2023
Anticipated Selections	January 2024
Anticipated Contract Award	April 2024

Selection Criteria

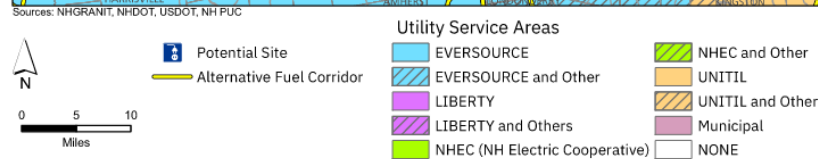
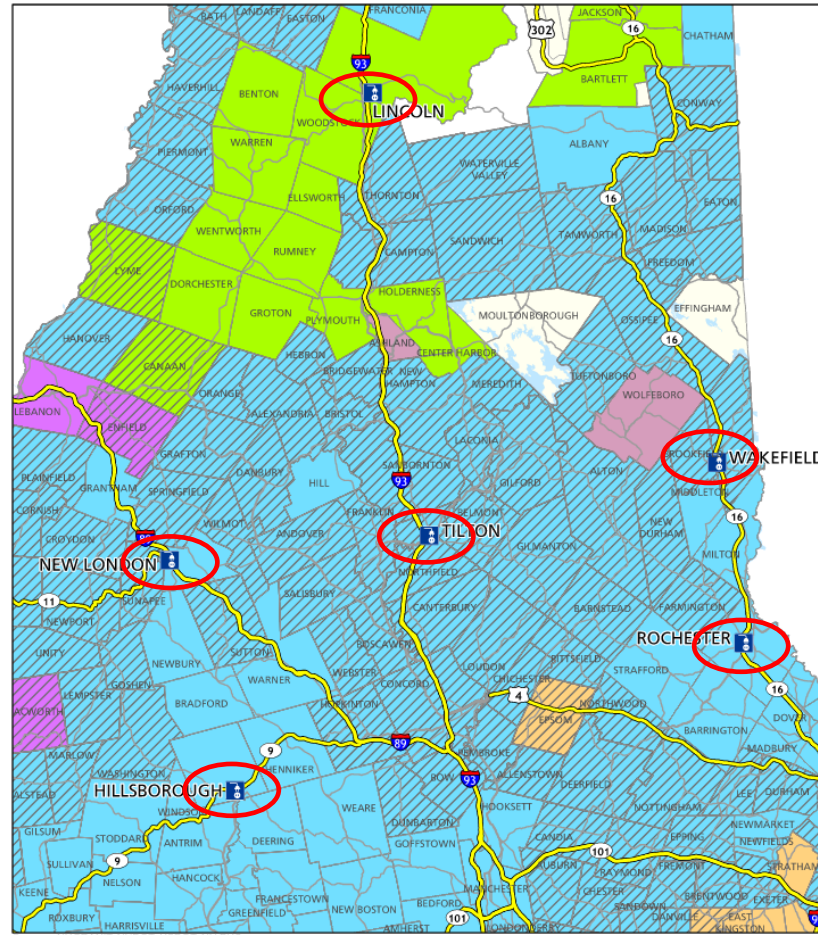
- Pass/Fail Criteria
- Technical Criteria – 70% *
 - Team/Experience
 - Financial Capability
 - Work Approach
 - Schedule
 - Location
 - Future Proofing
 - Safety
- Price – 30%



Have you checked all the boxes?

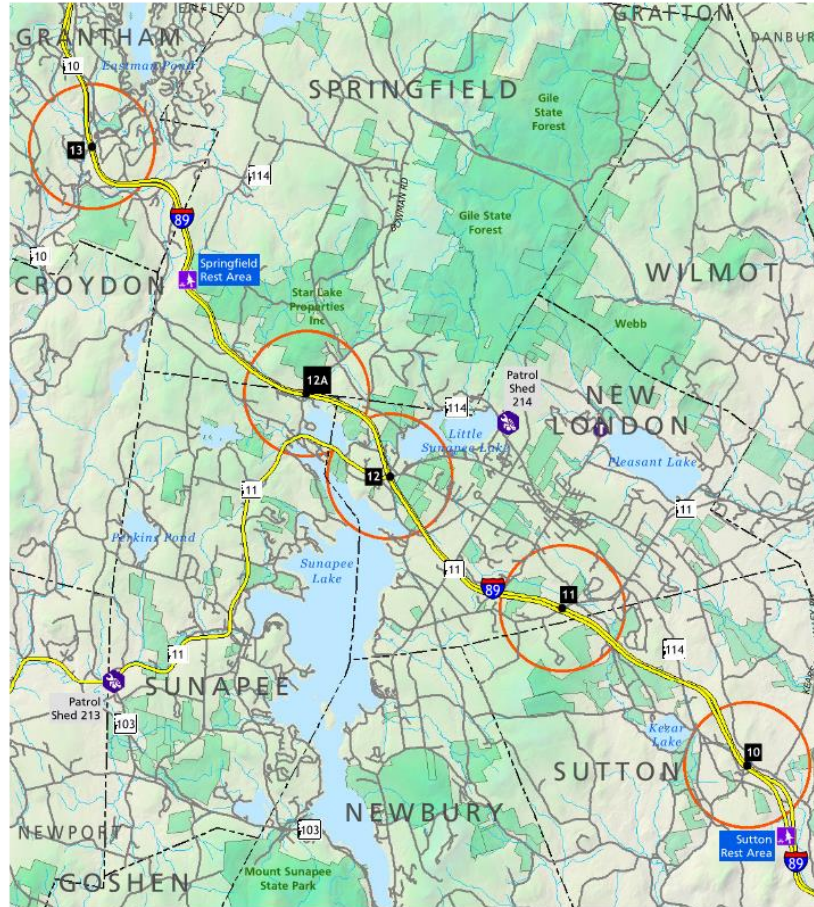
Phase 1 – Location Maps

Potential Station Locations – Phase 1 RFP



Potential Station Locations – Phase 1 RFP

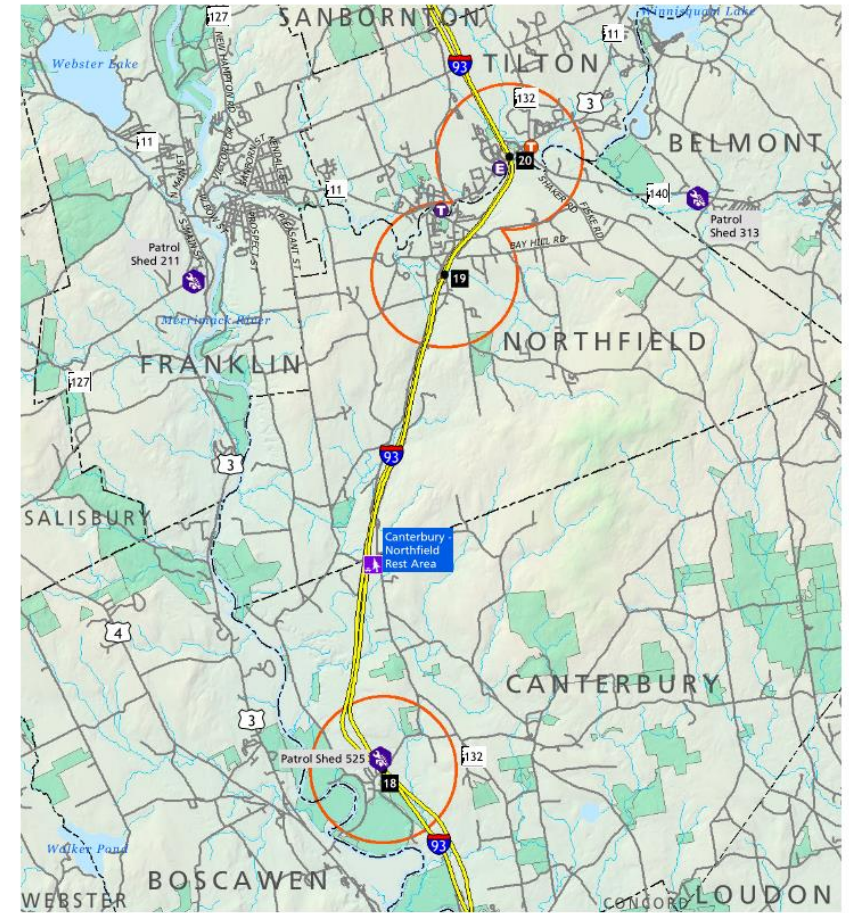
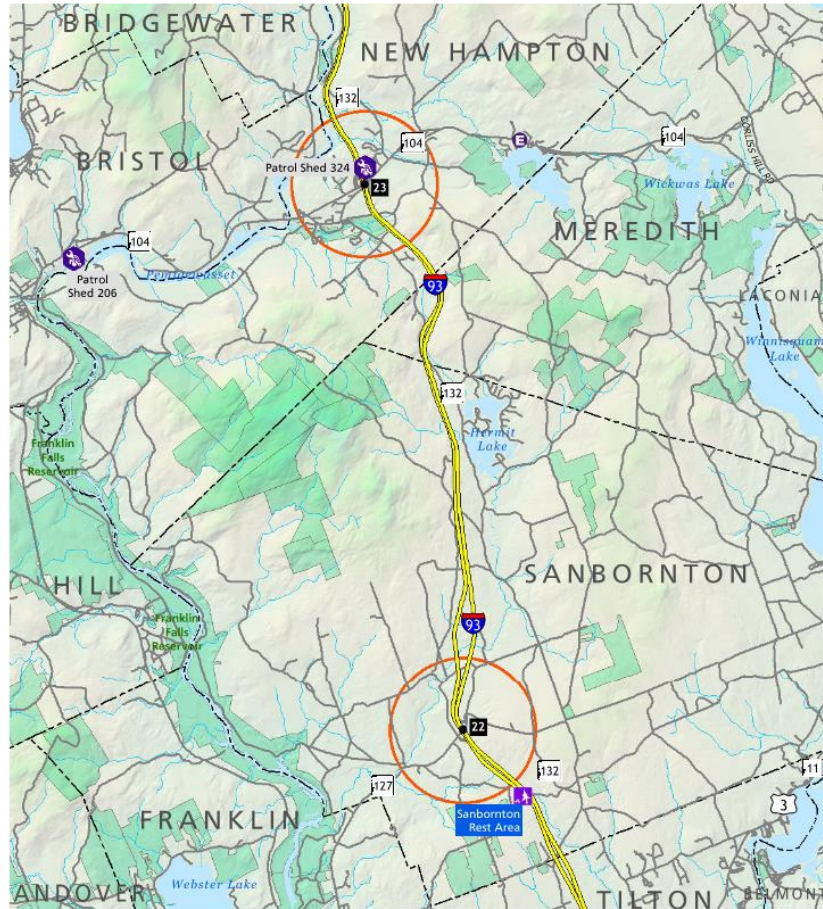
- I-89



<ul style="list-style-type: none"> ● Exit/Intersection ○ One-Mile Radius Exit/Road Intersection — Alternative Fuel Corridor <p>Sources: NHGRANIT, NHDOT, USDOT</p> <p>0 0.5 1 Miles</p>	<ul style="list-style-type: none"> Ⓔ Existing Charging Station Ⓧ Non-Networked Ⓣ Tesla Destination Ⓢ Tesla Supercharger Ⓜ Protected Open Space Ⓜ NHDOT Patrol Shed Ⓜ Rest Area 	<p>Potential Location: New London, Sutton, Sunapee, Springfield, Grantham Route: I-89 (AFC)</p>
--	---	---

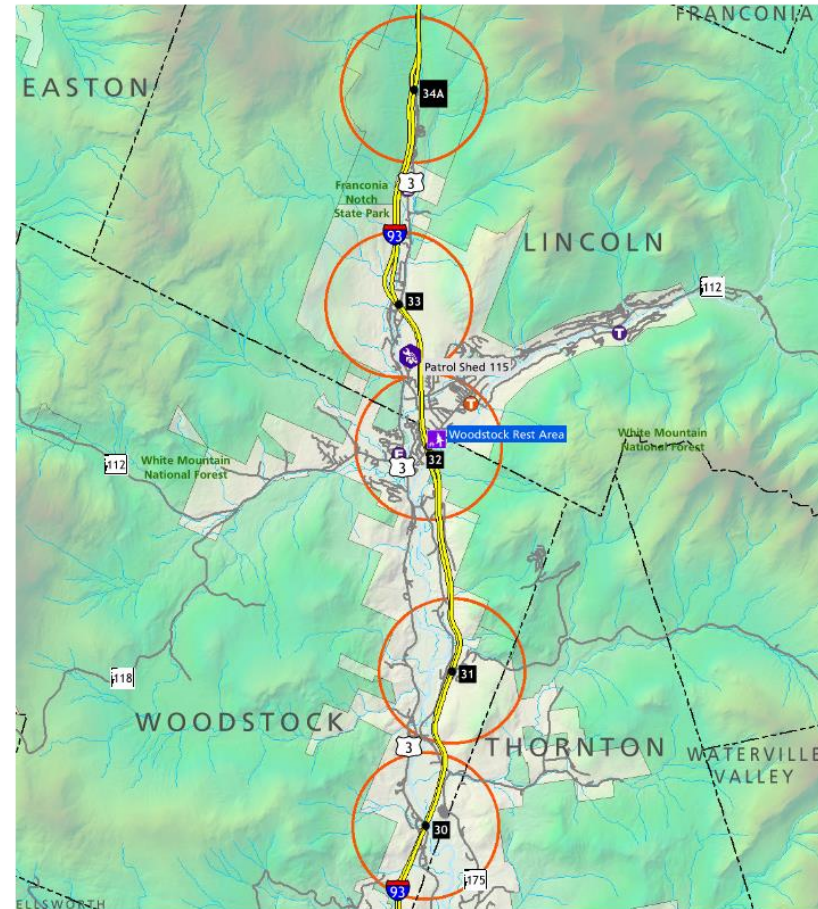
Potential Station Locations – Phase 1 RFP

- I-93



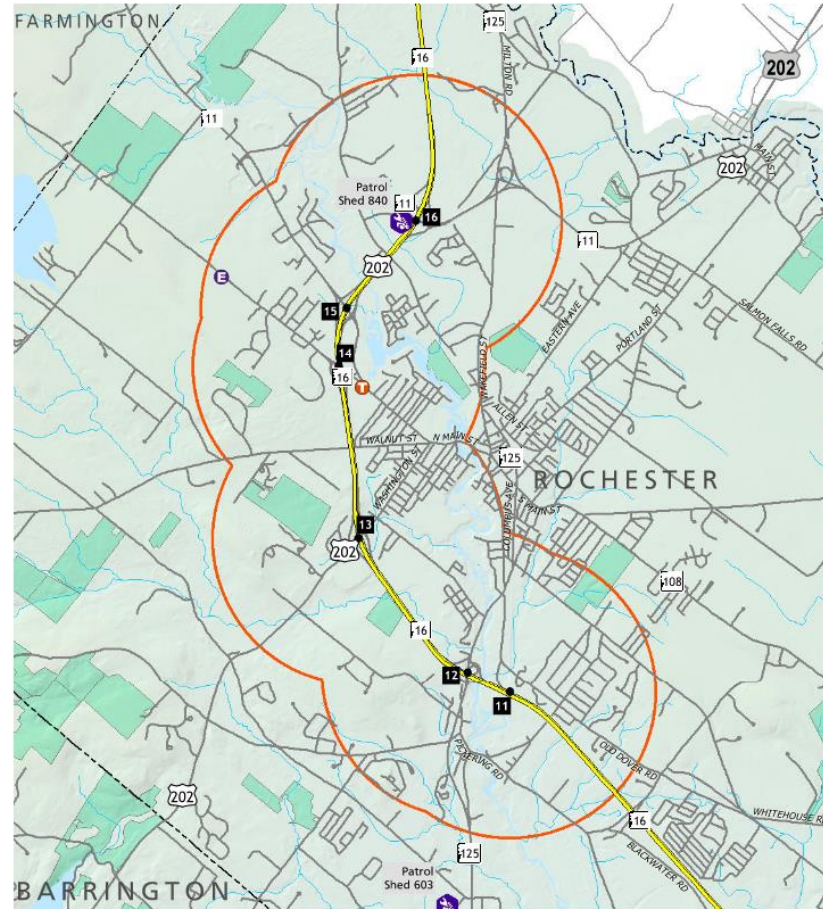
Potential Station Locations – Phase 1 RFP

- I-93



Potential Station Locations – Phase 1 RFP

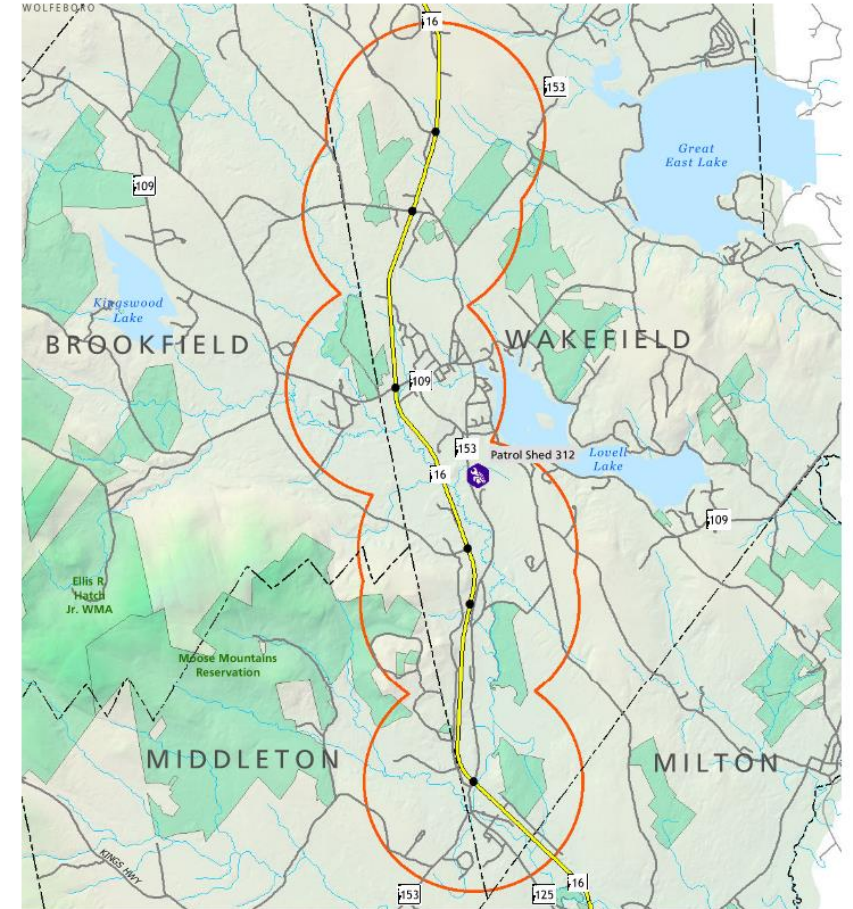
- NH-16



- Exit/Intersection
- One-Mile Radius
- Exit/Road Intersection
- Alternative Fuel Corridor
- Sources: NHGRANIT, NHDOT, USDOT
- ▲ North Arrow
- 0 0.5 1 Miles

- Existing Charging Station
- Ⓔ Non-Networked
- Ⓣ Tesla Destination
- Ⓢ Tesla Supercharger
- Ⓜ Protected Open Space
- Ⓜ NHDOT Patrol Shed
- Ⓜ Rest Area

Potential Location: **Rochester**
Route: **NH-16 (AFC)**



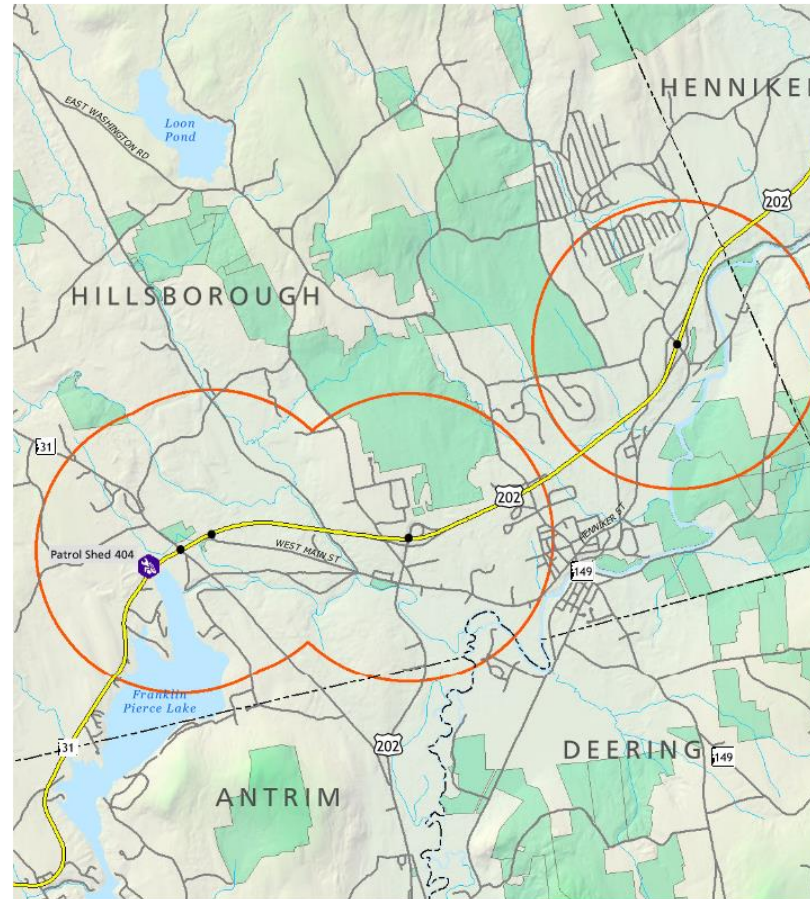
- Exit/Intersection
- One-Mile Radius
- Exit/Road Intersection
- Alternative Fuel Corridor
- Sources: NHGRANIT, NHDOT, USDOT
- ▲ North Arrow
- 0 0.5 1 Miles

- Existing Charging Station
- Ⓔ Non-Networked
- Ⓣ Tesla Destination
- Ⓢ Tesla Supercharger
- Ⓜ Protected Open Space
- Ⓜ NHDOT Patrol Shed
- Ⓜ Rest Area

Potential Location: **Wakefield, Brookfield, Middleton, Milton**
Route: **NH-16 (AFC)**

Potential Station Locations – Phase 1 RFP

- NH-9



Potential Location:
**Hillsborough, Henniker,
Deering**
Route: **NH-9 (AFC)**

Phase 1 – Getting Ready to Apply

Eligible Costs

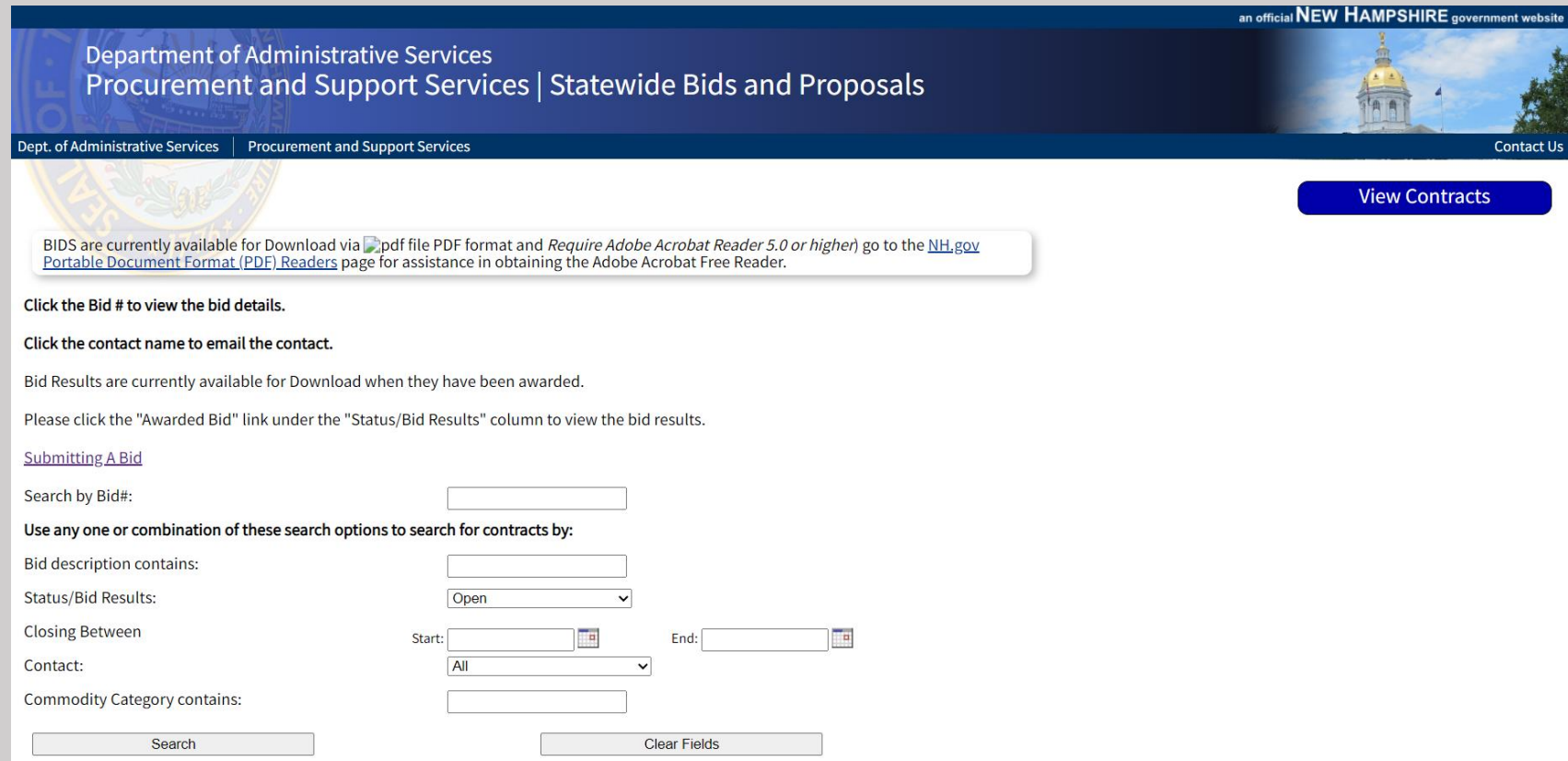
- i. Costs for **pre-construction activities** like environmental documents and studies, preliminary engineering, and related work **after notice to proceed**;
- ii. Costs for **DCFC units (including CCS and NACS ports for each unit)**, power conversion hardware, and associated equipment;
- iii. Costs for **Construction** (as defined under 12 U.S.C. 101(a)(4)), including site restoration after installation, directly related to the EV charging station;
- iv. Costs for **planning, permitting, acquisition, and installation of on-site distribution energy resource equipment** (e.g., solar arrays or stationary batteries);
- v. Costs to **acquire and install on-site electric service equipment** (e.g., power meter, transformer, and switch gear);
- vi. Costs to install **signage** at site that is compliant with the MUTCD and 23 CFR Part 750;
- vii. Costs to **procure and install, repair, upgrade, and/or replace existing EVSE to meet NEVI minimum requirements**;
- viii. Costs to **procure and setup EVSE related hardware and software**;
- ix. Costs to **upgrade existing EV charging stations to meet Americans with Disabilities Act (ADA) requirements**;
- x. Costs for **extended warranties or maintenance contracts** for a period not to exceed five years;
- xi. Costs for EV charging infrastructure **data sharing** as defined in this RFP; and
- xii. **Utility “demand charges”** for the first five years of operation.

Ineligible Costs

- i. Costs not approved by the State, including costs incurred prior to receiving a written notice to proceed;
- ii. Costs to purchase, lease, or real-estate rental;
- iii. Costs not directly related to charging of vehicles.
- iv. Costs for general operation and maintenance of the site on which the EVSE is located, including but not limited to electricity bills, management and legal costs, insurance, and snow removal;
- v. Costs for electric utility infrastructure needed to connect and serve new EVSE. This may include traditional distribution infrastructure such as step-down transformers, overhead service lines, and improvements to off-site power generation;
- vi. Costs for non-compliant EVSE;
- vii. Off-site or highway signage;
- viii. Taxes;
- ix. Internet connection and/or cell service, or improvements thereto;
- x. Costs for studies or research projects;
- xi. Costs for project equipment costs beyond the four required NEVI-compliant plugs;
- xii. Costs for any project costs covered by the utility, including utility service upgrade costs; and
- xiii. Administrative and overhead/indirect costs (excluding project-specific labor).

Accessing RFP

- RFP will be released on NH Department of Administrative Services Webpage
 - <https://apps.das.nh.gov/bidscontracts/>




an official NEW HAMPSHIRE government website

Department of Administrative Services
Procurement and Support Services | Statewide Bids and Proposals

Dept. of Administrative Services | Procurement and Support Services Contact Us

[View Contracts](#)

BIDS are currently available for Download via  pdf file PDF format and *Require Adobe Acrobat Reader 5.0 or higher* go to the [NH.gov Portable Document Format \(PDF\) Readers](#) page for assistance in obtaining the Adobe Acrobat Free Reader.

Click the Bid # to view the bid details.

Click the contact name to email the contact.

Bid Results are currently available for Download when they have been awarded.

Please click the "Awarded Bid" link under the "Status/Bid Results" column to view the bid results.



[Submitting A Bid](#)

Search by Bid#:

Use any one or combination of these search options to search for contracts by:

Bid description contains:

Status/Bid Results:

Closing Between Start:  End: 

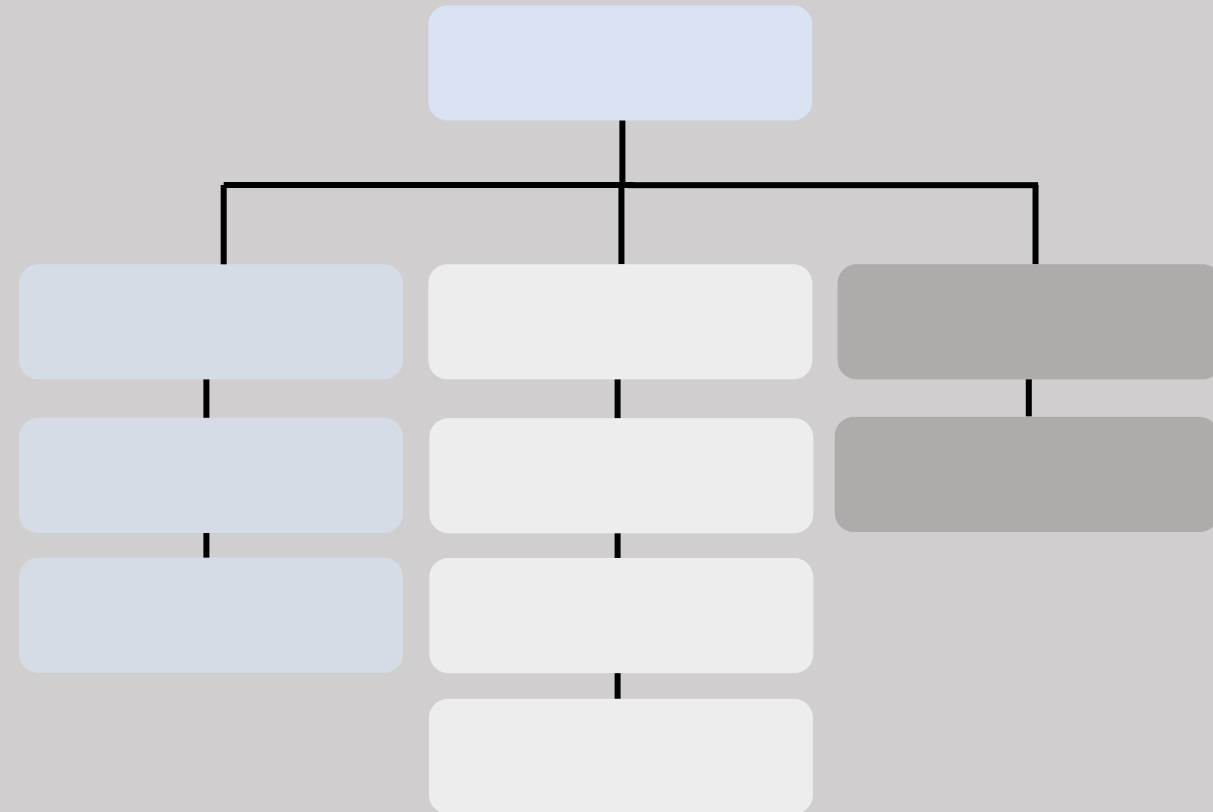
Contact:

Commodity Category contains:

Assembling a Team

What members are needed?

- Site Planner
 - Designer
- Contractor(s)
 - Suppliers
- Operators/Maintainers
 - Others



Site Selection

- Select a site appropriate for the program which meets NEVI requirements.
- Conduct site assessment. Use criteria from RFP as a reference.
- Conduct preliminary environmental assessment
 - NHDOT will complete NEPA prior to Notice to Proceed



Utility Coordination

- Identify the utility serving the site
- Coordinate with the appropriate utility
 - Is the required power available?
 - What are cost and schedule implications?



Utility Coordination

NHDES-A-03-026



DC FAST CHARGER UTILITY APPLICATION

Air Resources Division/Technical Services Bureau

TO BE COMPLETED BY APPLICANT



RSA/Rule: Voluntary

GENERAL INFORMATION	
DATE:	
APPLICANT COMPANY NAME:	
APPLICANT REPRESENTATIVE NAME (person responsible for answering questions and meeting with utility rep):	
APPLICANT REPRESENTATIVE PHONE:	ELECTRIC UTILITY:
CUSTOMER OF RECORD (utility account holder at proposed site):	
BRIEFLY DESCRIBE THE APPLICANT/SITE HOST AGREEMENT (e.g. Site host agreement completed; memorandum of understanding in place; initial conversation, etc.):	

SITE INFORMATION			
SITE NAME:			
ADDRESS:			
CITY/TOWN:	STATE: NH ZIP:		
SITE OWNER NAME:	SITE OWNER PHONE:		
FACILITY MANAGER NAME:	FACILITY MANAGER PHONE:		
CHARGER MAKE:	MODEL:	QUANTITY:	# OF PORTS:
TOTAL KVA OF CAPACITY REQUESTED:	REQUESTED SERVICE SIZE AND VOLTAGE:		
ADDITIONAL COMMENTS (include any additional information that may help the utility in their assessment):			
<p>NOTE: All easements and construction permits for the customer primary and secondary work are the responsibility of the applicant/customer. Customer may also be responsible for obtaining easements for the Utility's primary work as needed.</p> <p>NOTE: Please include an aerial image of the site.</p>			

NHDES-A-03-027



ELECTRIC VEHICLE PRELIMINARY SITE FEASIBILITY ASSESSMENT INFORMATION

Air Resources Division/Technical Services Bureau

TO BE COMPLETED BY UTILITY



RSA/Rule: Voluntary

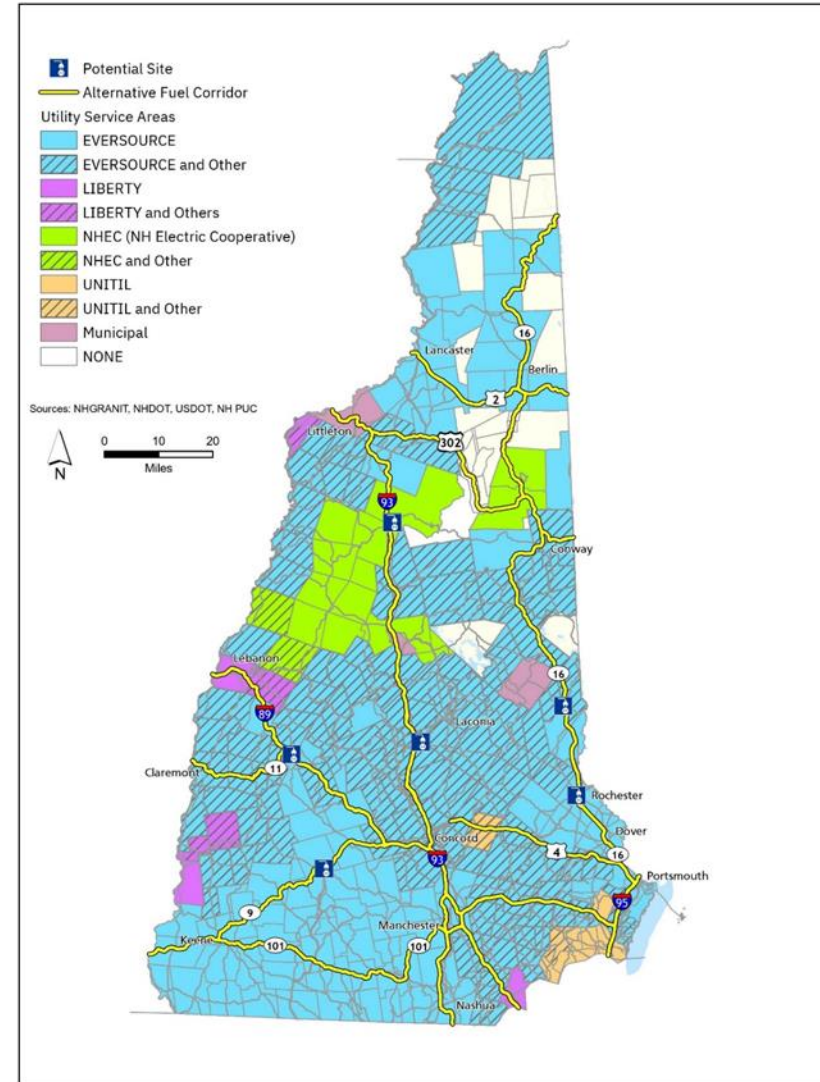
The following information is provided to allow a customer to evaluate the feasibility of an Electric Vehicle project. All provided information is based on available GIS data and other systems of record. Anticipated costs were developed based on good utility practice without field visits/verification. Detailed analysis, field review and design work will be required to verify the cost estimates provided in the event the customer determines that the site is feasible based on the information provided below.

PROJECT INFORMATION (PROVIDED BY CUSTOMER)		
ADDRESS OF SITE:		
CITY/TOWN:	STATE: NH	ZIP:
Description of facility and anticipated demand of chargers with all chargers being utilized:		
REQUESTED SERVICE AIZE AND VOLTAGE:		

SITE INFORMATION	
Is it anticipated that substation transformer upgrades will be needed due to this charging station? <input type="checkbox"/> Yes <input type="checkbox"/> No	
Is it anticipated that circuit position upgrades will be needed due to this charging station? <input type="checkbox"/> Yes <input type="checkbox"/> No	
Will a voltage conversion be required due to this charging station? <input type="checkbox"/> Yes <input type="checkbox"/> No	Anticipated conversion date: MM/DD/YYYY
Will reconductoring be required due to this charging station? <input type="checkbox"/> Yes <input type="checkbox"/> No	Anticipated reconductoring distance:
Anticipated distance to three-phase service:	
Anticipated cost of upgrades to serve the facility:	
<input type="checkbox"/> Less than \$20,000 <input type="checkbox"/> \$20,000-\$50,000 <input type="checkbox"/> \$50,000-\$100,000 <input type="checkbox"/> \$100,000-\$250,000 <input type="checkbox"/> \$250,000-\$500,000 <input type="checkbox"/> \$500,000-\$1 million <input type="checkbox"/> More than \$1 million	
<p>Description of primary work (e.g., trench length and conduit size) Describe scope of primary voltage construction work that customer is responsible for to serve the site. Including but not limited to, length of trenching, conduit requirements, equipment pad requirements, etc. All secondary construction work is the responsibility of the customer:</p>	

Utility Information

- Eversource
- Liberty
- New Hampshire Electric Coop
- Unitil



Available Resources

- [Home Page · Joint Office of Energy and Transportation \(driveelectric.gov\)](#)
- [Federal Register :: National Electric Vehicle Infrastructure Standards and Requirements](#)
- [National Electric Vehicle Infrastructure \(NEVI\) Formula Program Q&A \(dot.gov\)](#)
- [Federal Register :: Waiver of Buy America Requirements for Electric Vehicle Chargers](#)

Questions?

Michael Mozer, P.E.
NH DOT NEVI Program Lead
ev-infrastructure@dot.nh.gov