



NEW HAMPSHIRE DEPARTMENT OF TRANSPORTATION

STATEWIDE ON-CALL CONSTRUCTION ENGINEERING AND INSPECTION SERVICES

PREQUALIFIED LIST OF CONSULTANTS FOR LOCALLY
ADMINISTERED LOCAL PUBLIC AGENCY (LPA)

QUALIFICATIONS-BASED SELECTION CONTRACTS

FEBRUARY 2, 2024

What's inside

1. INTRODUCTION LETTER
2. PROJECT UNDERSTANDING + APPROACH
3. ORGANIZATION CHART + PROJECT TEAM
4. APPENDIX
 - A. RESUMES
 - B. WORK EXPERIENCE

*REQUIRED PAGE LIMITS ARE
MAINTAINED HEREIN.

INTRODUCTION LETTER







Stantec Consulting Services Inc.
5 Dartmouth Drive, Suite 200 | Auburn, NH 03032

C.R. Willeke, P.E.
Municipal Highways Engineer
NH Dept. of Transportation
The Bureau of Planning & Community Assistance
John O. Morton Building
7 Hazen Drive, PO Box 483
Concord, NH 03302-0483

February 2, 2024

**RE: Solicitation for the NHDOT Statewide On-Call Construction Engineering and Inspection Services
Prequalified List of Consultants for locally administered LPA Qualifications-Based Selection Contracts**

Dear Mr. Willeke and Members of the selection committee:

Stantec is excited for the opportunity to submit our qualifications for the Statewide On-call for Construction Engineering and Inspection Services to NHDOT (Department). We have a long history in New Hampshire of providing these services under the department's LPA project funded programs as well as directly for municipality-led projects across the state. Our work on state and federal funded projects has included programs such as TAP, CMAQ, SRTS, State Highway and State Bridge Aid assignments.

We have a staff of full-time field engineers, along with supporting technical and management staff based out of our Auburn, NH office with the experience, knowledge, and training to provide construction phase services in accordance with the LPA Manual. Our seasoned inspectors are LPA certified. They have been working together and with our office staff for over 10 years and understand what is expected of them in the field, their responsibilities to comply with various LPA programs, and proper documentation of construction activities.

Our team most recently provided services for such projects as the federally funded Strafford Square Intersection Improvements project in Rochester, Wolfeboro's Center Street State Aid Highway project, and the State Aid Bridge assignments for Gilford's Old Lake Shore bridge rehabilitation and Lebanon's Mascoma Street Bridge. Our continuity of services allow us to maintain strong working relationships across NHDOT through our municipal communities, resulting in trusted partnerships and successful delivery of critical infrastructure needs at the statewide and local levels.

Gerard Fortin, PE, (Jerry) will be your Principal-in-Charge. He provides a meaningful, efficient and pragmatic approach to construction projects developed during his 40+ years of experience in the transportation design and construction industry. Jerry is based in our Auburn, New Hampshire office and has more than 200 transportation-focused staff members located in eight offices throughout New England that can provide support as needed. **David McNamara, PE,** will serve as Project Manager and brings more than 24 years of highway and roadway design and construction experience, almost exclusively with New Hampshire municipalities and NHDOT.

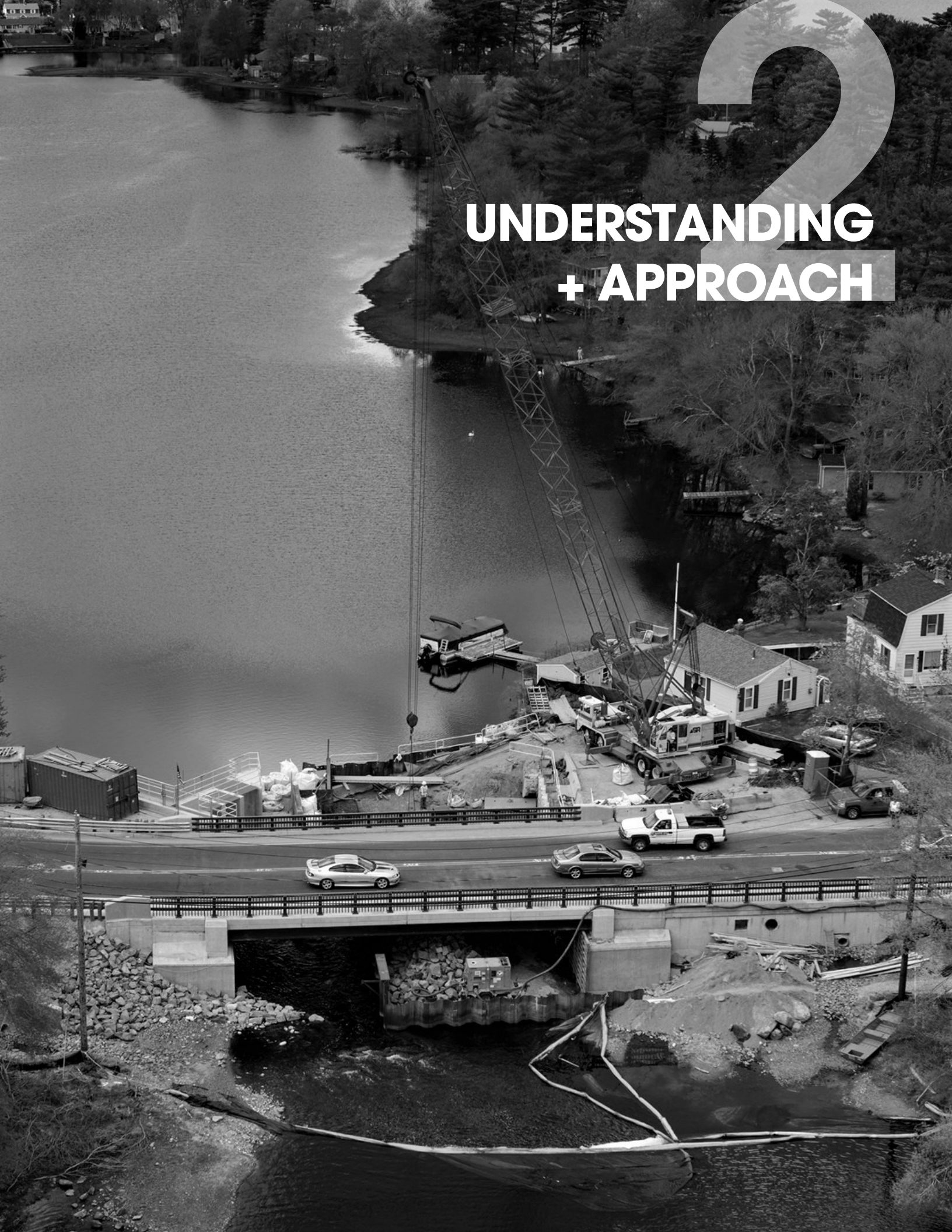
Stantec looks forward to the chance to be included on the Department's prequalification list for LPA construction phase services. Our existing depth of technical knowledge for NHDOT procedures, the LPA program, and in the industry at large, as well as our long-standing working relationships across local municipalities, the Bureau of Planning and Community Assistance, and Office of Federal Compliance leave us well positioned to assist with future LPA projects.

Sincerely,
STANTEC CONSULTING SERVICES INC.

Gerard Fortin, PE | Principal-in-charge
(603) 669-8672 | gerard.fortin@stantec.com

David McNamara, PE | Project Manager
(603) 263-4653 | david.mcnamara@stantec.com

INTENTIONALLY LEFT BLANK



2

UNDERSTANDING + APPROACH



UNDERSTANDING + APPROACH

Stantec's Auburn NH team has been providing a full range of construction engineering and inspection services to municipal clients for over 20 years. Combined with our extensive work with NHDOT, Stantec staff is highly experienced in NHDOT standards of design and construction. Our local office has a wealth of local knowledge and relationships, and provides the close proximity and accessibility needed to offer responsive services to municipalities statewide. Our municipal work has been completed under all manner of federal and state funding programs, as well as locally funded projects. We understand the requirements of both state and federal contracts through our design and construction expertise.

We have long standing relationships with municipalities such as Rochester, Londonderry, Salem, Wolfeboro and Lebanon, as well as many smaller municipalities such as Fremont, Bennington, and Dublin.

Our local, full time team of construction inspectors are Local Public Agency (LPA) certified, and have been certified through the OFC as necessary in the past when involved with Federal Aid projects. They understand the construction process, documentation requirements, and possess the technical expertise to manage any project that may be proposed.

UNDERSTANDING AND APPROACH

We understand this is a new process for the department and the municipalities utilizing both state and federal aid programs. Stantec has performed both design and construction phase services across the full array of potential projects, from small Safe Routes to School work through the largest LPA project ever in the state, the Broad Street Parkway. We are well versed in the requirements of the LPA Manual. We recognize that the prequalification process will create a "long list" for municipalities to solicit proposals from for their projects. Types of assignments that may be anticipated to be mostly related to roadway, bridge, and culvert construction. Project duties include daily observations of the work and preparation of daily field reports to document the work. It is anticipated that the standard DOT inspection form will be used and daily reports saved to the project (inspectors enter the report with a laptop computer in the construction trailer and save to the project file). Quantities are tracked and entered into the Department's computer system, construction management system (CMS), with a laptop computer in the construction trailer at the end

of each day. All measurements shall be in accordance with the department's standard specifications and the requirements of the Construction Manual. Other duties anticipated to be provided include observation of materials testing, review of stormwater pollution prevention plans (SWPPP) during the start of all phases of the work; review of CPM schedules; assistance with quantity calculations and documentation for project change orders; tracking changes during the course of the work and documentation related to as-builts. Stantec's field staff have their own laptop computers and typically complete daily field reports using an electronic form similar to the department's. Should a project not require or have access to the DOT's CMS, we will utilize our own, or those favored by the municipality.

Key elements to this project include:

Providing the LPA with oversight of federally funded and other state funded, locally sponsored, construction projects, including full and part time inspection and record keeping.

- Our experience includes providing services during construction for projects under many different funding sources including State Aid Highway, State Aid Bridge, SRTS, CMAQ, TE and ARRA programs. In addition to our field inspection work, our project manager and staff are experienced in many aspects of construction administration for these projects including managing weekly project meetings, reviewing submittals and shop drawings, processing contractor payment requests, preparing field orders and change orders, monitoring staff, coordinating labor compliance and payroll audits, and project closeout paperwork and reporting.

Providing the LPA construction related engineering services for federal and state funded projects.

- Stantec routinely provides construction related engineering services on all of our transportation related projects. This may be reviewing shop drawings and contractor submittals, responding to requests for information, or developing field design changes necessitated by differing site conditions or other project changes. Our field staff works closely with an office project manager who has access to our full team of engineers and scientists to assist in these efforts. We have specialists that allow us handle virtually any service that may arise.



Providing environmental expertise to assist the LPA with environmental regulations and related engineering needs related to construction.

- We have local environmental experts on our staff, such as Michael Leach, who has all necessary environmental certifications (CWS, CPESC, and CESSWI) to respond to questions regarding environmental regulations or permitting. Stantec can also provide specialty support services with stormwater experts on staff who can provide expertise and advice during construction relative to stormwater treatment facilities, of particular importance in MS4 communities.

Assuring the contractors' compliance with the plans, specifications and environmental commitments for various transportation, highway, and bridge construction projects.

- Our team of experienced inspectors have all been doing this work for over 15 years, qualify as Technician III staff under NHDOT guidelines, and have seen all types of transportation related projects and construction elements. They understand transportation related construction, are kept up to date on environmental regulations and permitting requirements, and have extensive experience in working with contractors. We typically supplement our field staff with one of several reputable materials testing firms that we maintain regular working relationships with. These firms provide specialty testing such as concrete, soils, and compaction, as well as fabrication inspections when required.

Coordinating and completing the necessary Office of Federal Compliance recording keeping and reporting requirements.

- Currently, two of our dedicated field staff are certified through the Office of Federal Compliance. As the project manager, Dave has been involved in numerous federal aid projects, and has a deep understanding of the process, and the importance of compliance. Stantec routinely provides staff with current training as the need arises.

ABILITY TO RESPOND

Construction phase services require a tremendous amount of flexibility and the ability to respond quickly as unanticipated situations may develop at any time. By using experienced field personnel, with office support that has construction background and a thorough understanding of the LPA process and procedures, Stantec is ready for anything. Assignments may require full time, on-site inspection, but in many cases the work also requires task specific oversight and inspection. Our field staff has worked in both capacities, and having worked together so long, can easily pivot to prioritize needs—assuring all levels of coverage are achieved.

With our experienced full time field staff, we are able to provide project specific on-site coverage, tailored to the project requirements, needs of the LPA, and available budget. We manage and coordinate the process from the office, but each of our technicians has the experience and knowledge to handle many aspects of these projects on their own, limiting the need for significant upper level oversight from the office. The office support is in place and available, and we have the flexibility to allow our field technicians to work directly with the LPA's, abutting property owners, NHDOT, and contractors on many of the day to day issues that may arise on any given construction project. Their experience also means they know if something in the field needs to be elevated, how to manage a unforeseen circumstance, and who to contact to help with a resolution.

As noted above, Stantec also has in-house, local specialty services that can cover just about any issue that may arise during construction including certified wetland scientists and SWPPP inspectors, contaminated soils experts who can respond to soils or groundwater contamination concerns, and geotechnical engineering services including responding to potential subsurface conditions not anticipated during design.

ADDITIONAL EXPERIENCE

In addition to our extensive LPA related construction experience, we provide similar design and construction administration services to many NH municipalities for locally funded road, bridge and culvert projects. An example is Lebanon's Slayton Hill Road. Following significant storm damage, we provided inspection for the reconstruction of 2-miles of rural roadway, funded through FEMA, which required many similar federal aid elements for the work as LPA funded projects. Field inspection services have been provided on an ongoing basis for the past 20 years to assist the communities of Londonderry and Salem with development projects. We are currently providing construction inspection services Salem's ongoing redevelopment of Rockingham Park.

34

ORGANIZATION CHART + TEAM





ORGANIZATION CHART + TEAM

PERSONNEL + RESOURCES

Stantec has a well-rounded seasoned team that is highly experienced in all areas outlined in the department's solicitation for this assignment. Our construction inspection team consists of long time, full time Stantec employees They have been working together and with the office support staff for years. In addition to these key personnel, we have the ability to tap additional construction staff from our Vermont and Maine offices, where they perform similar services. Brief bios of staff to be assigned are listed below along with a team chart.



Stantec's Principal-in-Charge, **Gerard Fortin, PE** brings 42 years of experience in management, planning, design and construction of transportation projects. Jerry is leading senior principal in New England and will ensure that our project team provides the highest quality of service to the Department.

Dave McNamara, PE is our project manager and NHDOT's day to day contact. With 24 years of experience in the design of highway and bridge projects, he brings considerable experience leading the construction phase portion of municipal transportation projects. He is currently managing the construction phase of the Strafford Square Intersection Improvements project, which is substantially complete and scheduled to be finalized in the spring of 2024. His portfolio includes small, TE funded LPA assignments in Tamworth and Bennington; recent State Aid projects in Lebanon and Gilford; and larger bridges, such as the Sagamore Creek bridge in Portsmouth. Dave brings multi-disciplined field experience, having been the resident engineer on a complete infrastructure reconstruction of Hampton Beach, through a modified design-build format.

Dan Taylor, PE is an LPA certified design engineer and will serve as the structures team lead. He brings 17 years of experience in the design and construction of bridge and transportation projects. Dan started his engineering career at the NHDOT. He knows DOT staff and procedures well and has established himself as a go-to engineer within Stantec.

Jonathan Bourque, CESSWI has 19 years of experience in construction inspection and observation. Jon is resident engineer for the Strafford Square Intersection improvements project, which is expected to be finalized in the spring of 2024. He also recently oversaw the Center Street reconstruction project in Wolfeboro—



completed through the State Aid Highway program. He recently provided construction phase services for the Old Lake Shore Road Bridge replacement in Gilford through the State Aid bridge program. Jonathan is LPA certified and has an extensive background on road, bridge, and infrastructure projects.

John Fortin, CESSWI has 28 years of construction inspection experience, on a broad range of transportation and site development projects. LPA certified, he has overseen numerous municipal roadway projects in Salem and Londonderry and provides third-party site inspections, including off-site roadway improvements. NASSCO certified, he has provided field inspection services for NHDOT pipe and culvert inspection projects as well.

Seth Potter has 24 years of construction experience, including the Mascoma River Bridge in Lebanon, under the State Aid bridge program. Seth works as an extension of several Town's DPWs, providing layout services for rehabilitation and paving projects.

Glenn Burton, the former head of Salem's Water Department, provides Stantec a deep understanding of infrastructure construction and oversight. Glenn provides significant expertise in municipal utilities and infrastructure for our roadway reconstruction projects.

Michael Leach, CWS CPESC, CESSWI, has managed environmental services on many transportation projects, including assignments involving all aspects of environmental analysis. His experience includes State Aid Highway projects; multiple roadway reconstruction and improvement projects in Salem; and SRTS and CMAQ projects in Wolfeboro, Litchfield and Londonderry. He can provide expertise for all environmental issues that may arise during construction.



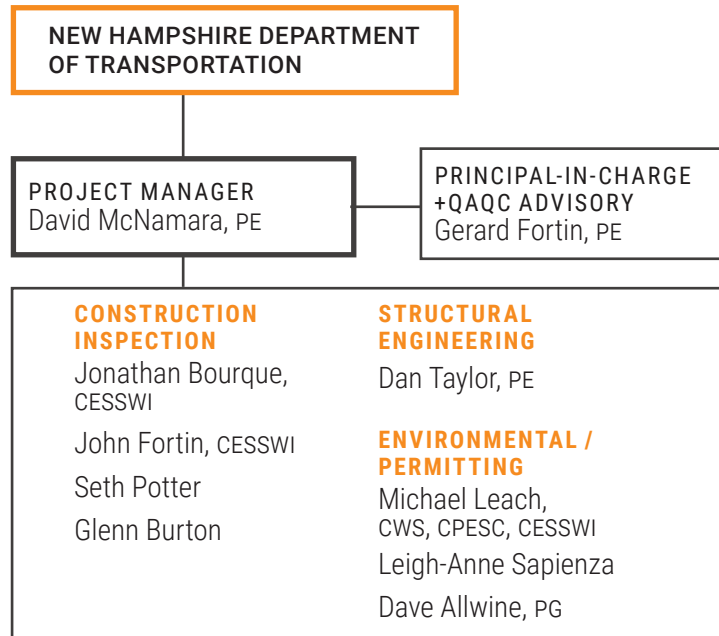
Leigh-Anne Sapienza will lead our team efforts to address Limited Reuse (LRS) and Contaminated Soils tasks. Leigh-Anne is Stantec’s foremost expert on LRS as well as specializing in environmental site assessment and remediation work. She manages our work in these fields across New Hampshire. With LRS now a part of the LPA process, Leigh-Anne’s expertise will be critical under this contract.

Dave Allwine, PG will also support environmental services tasks. With 34 years’ experience as a geologist, Dave has served as Project Safety Officer, Field Program Coordinator, and/or Lead Hydrologist and has worked with NHDOT and other public and private clients in New Hampshire and across the Northeast. His work includes site remedial investigations/cleanups, including superfund RI/FS investigation management; underground storage tank areas; and bulk fuel storage/distribution facilities.

FIELD INSPECTORS:

Stantec has several experienced staff members with critical certifications and trainings as indicated in the chart below. Beyond the table, Stantec staff members also hold other certifications and training such as NASSCO certification for pipe and manhole inspection, NHDOT–Construction 101 Training, and NHDOT–LPA Training. A list of these additional certifications and training by staff member are indicated in the chart at right.

→ Organization Chart



→ Team Credential Highlights

	Years' Experience	Years with Firm	Inspector Class	PM/Construction Engineer of Record	Environmental/CESSWI	NETTCP HMA Paving Technician	NETTCP Concrete Technician	CI Concrete Field Testing Technician	Safety/OSHA/Hazard Training	NICIT Certifications	Hazwoper Training	NASSCO Certification	NHDOT–Construction 101	NHDOT–LPA Certified	NHDOT–LPA OFC Training	LRS Experience
Gerard Fortin	42	42		●								●		●		●
Dave McNamara	24	24		●										●		●
Dan Taylor	17	12												●		
Jonathan Bourque	19	16	TIII		●			●		●			●	●	●	
John Fortin	28	17	TIII		●			●	●	●		●	●	●	●	
Seth Potter	24	24	TIII					●		●				●		
Glenn Burton	38	8	TIII		●											
Michael Leach	26	26												●		
Leigh-Anne Sapienza	22	22									●					●
Dave Allwine	34	34									●					●
Material testing lab						●	●	●								



5 REFERENCES



REFERENCES

NH CONSTRUCTION ADMINISTRATION PROJECTS



CITY OF ROCHESTER PETER NOURSE, PE

Director of City Services
(603) 332-4096
peter.nourse@rochesternh.net

Stantec provided design and construction phase services for the new Strafford Square roundabout. The roundabout opened to traffic in late 2023, following a 2 phase construction process, which included the undergrounding of extensive aerial utility infrastructure.



TOWN OF WOLFEBORO STEVE RANDALL

Director of Public Works
(603) 569-8176
srandall@wolfeboronh.us

Our New Hampshire team has been working for the town for over 10 years and has completed multiple projects in the \$1 to \$3 million dollar range including the Downtown Streets Improvements with partial funding under the Safe Routes to School Program and the recently completed State Aid Highway project – Center Street.



TOWN OF GILFORD MEGHAN THERIAULT

Director of Public Works
(603) 527-4778
dpwdirector@gilfordnh.org

Our team in New Hampshire recently completed design and construction administration services for the Old Lakeshore Road Bridge funded under the State Aid Bridge program.

INTENTIONALLY LEFT BLANK

APPENDICIES A + B



LACONIA EYE &
LASER CENTER
800-1550
LACONIAEYE.COM

WALSH
PAVING
CONCRETE
CURB & GUTTER
LANDSCAPE

WALSH
PAVING
CONCRETE
CURB & GUTTER
LANDSCAPE



6A

RESUMES



Gerard Fortin
PE—SENIOR PRINCIPAL

YEARS OF EXPERIENCE **42**

PRINCIPAL-IN-CHARGE

Gerard’s supervisory and design responsibilities include the coordination and production of contract documents, specifications and cost estimates, reports, proposals and liaison with clients and communities. He has extensive experience in major highway stormwater drainage systems and stormwater management. He has been responsible for directing drainage design for highway and roadway systems, analysis and evaluation of major municipal urban stormwater systems, bridge and roadway culvert design and replacement projects, flood insurance studies and flood protection projects.

CREDENTIALS

B.S., Hydrology, 1978

Professional Engineer #6419 // NH

NHDOT LPA Certification

PROJECT EXPERIENCE

Martin Road Bridge Replacement // Fremont, NH

Principal-in-Charge for final design of the replacement of the Martin Road bridge over Brown Brook in Fremont, NH. The project included hydraulics, geotechnical, bridge and roadway design, and regulatory permitting. The new bridge was designed to meet current stream crossing guidelines. The design provides for a new 22 ft wide x 7 ft high precast concrete box culvert with wingwalls on concrete spread footings, stone fill armoring and stream gravel to provide a simulated channel bottom.

Center Street Improvements // Wolfeboro, NH

Project Manager for analysis and design of improvements for drainage systems and outfalls from the downtown area of Wolfeboro to Lake Winnepesaukee at Back Bay. The project involved permitting as well as hydrologic and hydraulic analysis for new storm drain systems to serve street catchment areas. An evaluation of the area stormwater pumping station resulted in recommendations to increase pumping capacity.

Additionally:

- Salem Road Program // Salem NH
- CMAQ, Pillsbury-Mammoth Sidewalk // Londonderry, NH
- F.E. Everett Turnpike—Stormwater Drainage Design + Water Quality Analysis // Merrimack, NH
- Bartley Hill Road Reconstruction // Londonderry, NH
- Pettengill Road // Londonderry, NH



Dave McNamara
PE—PRINCIPAL

YEARS OF EXPERIENCE **24**

PROJECT MANAGER

Dave is a civil engineer with considerable experience on roadway design, reconstruction, and multi-modal projects. He has managed a broad array of projects from initial conceptual level designs and planning efforts, through final design, bidding and construction. Projects he manages routinely involve multi-discipline coordination, permitting, and significant public outreach components.

CREDENTIALS

B.S., Civil Engineering, 1999

Professional Engineer #11241 // NH

NHDOT LPA Certification

10 Hour, Occupational Safety and Health Training Course // Certification #001105700

KEY EXPERIENCE

Strafford Square Intersection Improvements // Rochester, NH

Project Manager for final design and construction components of this major intersection reconstruction project. David managed the design efforts to reconstruct an existing stop controlled intersection into a modern multi-lane roundabout, while also relocating the aerial utilities in the project corridor underground. He is currently managing the on-going construction phase of the work.

Old Lake Shore Road Bridge Rehabilitation // Gilford, NH

Project Manager for the Old Lake Shore Road Bridge replacement over the Gunstock Brook from the study through construction. The project was funded through the State Aid Bridge program and was completed in 2020.

Additionally:

- Mechanic Street Intersection Improvements // Lebanon, NH
- Mechanic Street Sidewalk // Lebanon, NH
- Transportation Heritage Trail // Keene, NH
- Center Street Improvements // Wolfeboro, NH
- Broad Street Parkway // Nashua, NH
- Mascoma River Greenway // Lebanon, NH
- Dulac Street Roadway Reconstruction // Lebanon, NH



Jonathan Bourque
CESSWI—FIELD SERVICES REP.

YEARS OF EXPERIENCE **19**

TECHNICIAN III

Jonathan currently acts as the field representative in many communities in New Hampshire and regularly coordinates with the NHDOT for roadway assignments.

CREDENTIALS

Associate of Applied Science, Construction Management, 2005

NHDOT LPA Certification

NHDOT Training Federal Aid

NHDOT Construction 101 Certification

OSHA 30 Hour Construction Safety & Health Certification

PROJECT EXPERIENCE

Center Street Roadway Improvements // Wolfeboro, NH

Resident Project Representative for reconstruction of 1,900' of Center Street (NH Route 28/109A) funded under NHDOT's State Aid Highway municipally managed program. The project includes roadway widening, drainage, gravels, pavement, sidewalks, and a midblock pedestrian crossing. Responsible for coordination with NHDOT regarding Town payment and reimbursements.

Downtown Streets // Wolfeboro, NH

Resident Project Representative responsible for providing construction inspection for the reconstruction of multiple downtown streets, including shop drawing review and assisted with the requirements of the NHDOT LPA and Federal Highway Administration. This project included asbestos cement water main removal, temporary water main connections, new water main, new sewer main, connection of existing water and sewer services, and a new drainage system.

Strafford Square Intersection Improvements // Rochester, NH

Resident Project Representative for the federally funded project that involved the construction of a new multi-lane modern roundabout, with associated utility, landscaping, and pedestrian facilities. .

Pettengill Road Reconstruction // Londonderry, NH

Resident Project Representative for the town; responsible for inspecting nearly 5,000 LF of new roadway which included gravels, paving, detention ponds, cooling water line relocation, new water main, connections to the sewer interceptor, pavement markings and signage. Also inspected three signalized intersections.



John Fortin
CESSWI—FIELD SERVICES REP.

YEARS OF EXPERIENCE **28**

TECHNICIAN III

John has more than 27 years of experience in the construction industry. Over these, he has been involved in all types of construction projects ranging from sewer, water and utility pipeline construction to roadway construction, as well as site work for commercial and residential projects. His method of working with contractors and abutters is well suited to obtaining the high quality results demanded by our clients.

CREDENTIALS

NHDOT LPA Certification

NHDOT Training Federal Aid

NHDOT Construction 101 Certification

NASSCO – Pipeline Assessment Certification

NICET Level 1, Erosion Control

NICET Level II, Roadway Construction, Underground Utility Construction, Sewer and Water Construction

8 Hour Hazwoper Certification

OSHA, 10 Hour Training Certification

24-Hour RCRA Facilities Training Certification

PROJECT EXPERIENCE

NHDOT Culvert Inspection Program // Statewide, NH

Engineering technician responsible for coordination and conducting culvert inspections for 75 locations on Central Turnpike and 60 locations on Eastern Turnpike for the NHDOT Bureau of Turnpikes.

Mary Ann Avenue and Elsie Avenue // Salem, NH

Resident Project Representative responsible for providing construction observation for a 4,100-ft-long roadway reconstruction project. This project also included drainage system installation and coordination between abutters and contractor.

Brady Avenue and Brookdale Road // Salem, NH

Resident Project Representative responsible for providing construction observation for a 12,200' long roadway reconstruction project involving the construction of a 36" culvert and a 48" culvert and a new drainage system. Additional responsibilities included addressing abutter's concerns and inquiries. The roadways were constructed with a consistent width of 20' with Cape Cod berm on both sides. In addition, several horizontal curves were super-elevated and a significant profile change was incorporated.



Seth Potter
RESIDENT INSPECTOR

YEARS OF EXPERIENCE **24**

TECHNICIAN III

Seth has 27 years of experience as a resident project representative and field engineer. His work includes construction monitoring for tens of thousands of linear feet of new/rehabilitated roadway and infrastructure in New Hampshire. He monitors quality of work, subcontractor coordination, and quality control over buildings, sites, parking lots, utilities, concrete formwork, oversight of concrete reinforcing installations, winter protection of concrete, supervision of installation of sewer mains, water mains, and storm drainage. Seth also has extensive experience with interpretation of contract documents and drawings.

CREDENTIALS

NHDOT LPA Certification

8 Hour Hazwoper Certification

OSHA, 10 Hour Training Certification

PROJECT EXPERIENCE

Roadway Construction (Various sites) // Milford, NH

Resident Project Representative responsible for construction monitoring for the completion of over 6,000 linear feet of roadway construction, including installation of guardrail, restoration of growth, generating a punch list, placement of base and subbase materials, paving, and supervision of 15,000-gallon cistern installation.

Pingree Hill Road Reconstruction // Auburn, NH

Resident Project Representative responsible for providing construction monitoring for 7,600 linear feet of roadway reconstruction, including reclaiming and repaving.

Wilson Crossing, Chester Turnpike, Spofford Road, Eaton Hill Road + Raymond Road Upgrades // Auburn, NH

Resident Project Representative responsible for providing construction monitoring for the reconstruction of approximately 8,500 linear feet of existing town roads, including the reconfiguration of three intersections, the addition of a school bus loading lane, access for the town's new safety complex, and construction of a closed drainage system with a detention pond.

Depot Road and Bridge Reconstruction // Auburn, NH

Resident Project Representative. Construction monitoring for the reconstruction of 1,500 linear feet of existing town roadway, including replacement of an existing granite abutment/slab bridge with a new precast box culvert



Glenn Burton
FIELD SERVICES REPRESENTATIVE

YEARS OF EXPERIENCE **38**

TECHNICIAN III

Glenn has over 30 years of experience in the design, construction, inspection, and operation of a New Hampshire municipal water utility serving a population of approximately 25,000 persons. He has multi-disciplinary exposure to all phases construction, and operation of water and wastewater utilities, including extensive experience with engineering standards and specifications for utility construction.

Glenn brings to our team hundreds of hours of technical training in asset management and GIS for water utilities; water distribution, storage construction, and rehabilitation, including disinfection, corrosion control, thrust restraint and trenchless technologies; FEMA Emergency Operations Management; and Worksite Traffic Safety.

CREDENTIALS

Grade III Certification, Water Distribution + Water Treatment // NH

750+ Hours utility operation and management training

PROJECT EXPERIENCE

Tuscan Village Offsite Roadway Improvements // Salem, NH

Resident Project Representative providing construction observation for multiple intersection and roadway improvements to Route 28, Route 97 and Rockingham Park Boulevard including replacement of utilities, drainage, curbing, sidewalks and traffic signals as well as road widening, milling and paving.

Floodplain Improvements // Salem, NH

Resident Project Representative providing construction observation for the construction of 600' of 5' x8' concrete box culvert crossing Route 38 (Pleasant Street) for the rerouting of Policy Brook.

Commercial Site Development and Offsite Roadway Improvements // Salem, NH

Resident Project Representative providing construction observation for multiple commercial site redevelopments in the Route 28 corridor in Salem including The Copper Door and Seasons Market

Residential Subdivision Development/Salem NH

Resident Project Representative providing construction observation for the construction of roadways, utilities and stormwater systems through seven residential developments.



Michael Leach
CPESC, CESSWI—SR ASSOCIATE

YEARS OF EXPERIENCE **26**

ENVIRONMENTAL SERVICES

As a Certified Wetland Scientist with over 20 years of experience on public and private projects, Michael has extensive field and design experience in soils, wetland soil delineation and permitting and facility layout and design. His field experience includes soils mapping, site feasibility studies, wetland delineation and environmental permitting through local, state and federal agencies.

CREDENTIALS

Bachelor of Science, Soils, 1988

Associate in Science, Civil Engineering, 1985

NHDOT LPA Certification

Certified Professional, Erosion & Sediment Control #2619

Certified Erosion, Sediment & Storm Water Inspector #1078

Certified Wetland Scientist // NH #189

Licensed Septic Installer // NH #1343

Licensed Septic Designer // NH #153

PROJECT EXPERIENCE

Pillsbury & Mammoth Rd. Sidewalk // Londonderry, NH

Project Engineer for this NHDOT CMAQ project. Wetland delineation and town and NHDES wetland permitting were provided, as well as abutter notification for improvements outside the town's and state's right-of-ways for the meandering sidewalk proposed to connect four schools and two adjacent neighborhoods.

NHDOT Culvert Video Inspection Permitting // Franklin and Bedford, NH

Environmental Engineer responsible for preparation of two separate NHDES Permit by Notification (PBN) applications and approvals for the Bureau of Highway Design for temporary water diversions and for conducting video inspection and assessment of portions of each project's existing drainage system on perennial streams.

Additionally:

- NH Route 28 Rockingham Road and Page Road Intersection Updates, Londonderry, NH
- Historic Bridge over Connecticut River Rehabilitation // Lyme and Thetford, NH + VT
- Emergency Permitting for Failed Roadways and Culverts // Londonderry, NH
- I-393 Culvert Replacement and Rehabilitation between Exits 1 and 2 // Concord, NH



Leigh-Anne Sapienza
ASSOCIATE

YEARS OF EXPERIENCE **22**

LRS/CONTAMINATED SOILS

Leigh-Anne specializes in environmental site assessment and remediation work. She brings years of environmental consulting experience, serving as the project manager for sites throughout New England. Her duties have included the development of contractor specifications, coordination of field staff, report writing, and quality assurance of field work.

CREDENTIALS

Bachelor of Science, Ecology and Evolutionary Biology, 2001

Wetlands Resource Management + Wetlands Delineation, 2002 + 2003

PROJECT EXPERIENCE

NHDOT Environmental Services // Statewide, NH

Currently primary project manager for NHDOT environmental projects. Leads day to day operations for UST removals, preliminary and phase I environmental site assessments (ESAs), site investigations, design support, and construction screening and oversight.

Phase I/II ESA Services // Dover, NH

Developer-owned, 17-acre industrial complex. Conducted a site inspection, performed reviews of state and municipal files, conducted historical research, and authored a Phase I ESA report for the property, which had been industrially developed since the late 1800s. Based on findings, a Phase II ESA was required. Oversaw subsurface investigation efforts at the site including coordination of laboratory and drilling subcontractors.

Phase I/II ESA Services, Pease International Tradeport // Portsmouth, NH

Conducted due diligence assessments for properties located on land formerly occupied by Pease Air Force Base. Conducted site inspections, reviews of state and municipal files, historical research, and authored Phase I ESA reports. Subsurface investigations focused on chlordane impacts to soil in former military housing areas and PCB releases from transformers.

Additionally:

- Various Remediation of Gasoline-Impacted Sites // Lancaster, Manchester, Lebanon, Nottingham NH
- Various Subsurface Investigations // Dover, Exeter, Laconia, Littleton, Nashua, and Tilton, NH
- Nationwide UST Program Management Assistance



Dan Taylor
PE—ASSOCIATE

YEARS OF EXPERIENCE **17**

STRUCTURES ENGINEER

Dan brings 15 years' experience in the design and construction of transportation projects. Earlier in his career, Dan participated in an 18-month training program with the NHDOT which was primarily split up into the following three bureaus: Highway Design, Bridge Design, and Construction. His technical skills include steel, concrete, and foundation design, plan production, cost estimating, specification writing, and bridge load rating & condition evaluation. Dan has had formal training in LRFD steel and concrete design, LRFR load rating of bridges, hydraulic design of safe bridges, culvert design, roadside safety design, stream stability and scour for highway bridges, bridge rehabilitation & evaluation, urban drainage design, and inspection of bridges.

CREDENTIALS

B.S., Civil Engineering, 2006

Professional Engineer #13334 // NH

Safety Inspection, In-Service Bridges // FHWA-NHI 130055

PROJECT EXPERIENCE

Huse Road over I-293/NH101 // Manchester, NH

Project manager and engineer responsible for the preliminary and final design of the deck replacement and minor widening of this 5-span, 295 foot long, 37.5 degree skewed, interstate overpass bridge. The existing sidewalks were 4'-6" wide with aluminum bridge rail, so the bridge was widened 9" on each side in order to provide 5'-0" clear sidewalk width to meet ADA requirements and allow for modern crash-tested 4-bar steel bridge railing to be installed. In order for the existing beams to load rate an acceptable level, this bridge was detailed to behave non-compositely in the negative moment regions over the piers and compositely at midspan. In addition to the deck, the expansion joints, bridge railing and protective screening, and pavement and membrane were also replaced. This bridge will be constructed in two phases while maintaining one lane of alternating one-way traffic on Huse Road.

Bridge Rehabilitation Projects* // Statewide, NH

Project Engineer for various bridge rehabilitation projects in NH along I-89, I-93, Route 101, Route 302, & Route 175. Scope of work generally consisted of replacing pavement and membrane, partial and full-depth deck repairs, expansion joint replacement, deck fascia removal and replacement, bridge rail upgrades, and abutment backwall reconstruction.



Dave Allwine
PG—PRINCIPAL

YEARS OF EXPERIENCE **34**

ENVIRONMENTAL SERVICES

As a professional geologist with 34 years experience in the geotechnical and environmental consulting industry, Dave acts as a Senior Project Manager on a number of contaminated site investigations. His experience is varied and includes contaminated soil and groundwater investigations in New England and throughout the eastern United States. Specific job experience includes remedial investigations/cleanups at Brownfields sites, leaking underground storage tank sites, bulk fuel storage/distribution facilities; Superfund sites; uncontrolled drum disposal sites; landfills; and utility, chemical distribution, and industrial manufacturing facilities. Dave has also managed several RI/FS-type investigations.

CREDENTIALS

B.A. Geology, 1984

Licensed Geologist #564 // NH

Licensed Geologist // KY, ME, NC

PROJECT EXPERIENCE

NHDOT Oil and Hazardous Material Investigations/ Cleanups // Statewide, NH

Dave served as one of the team's Project Safety Officers and Project Managers for this contract with the NHDOT. Typical sites included leaking underground storage tanks and miscellaneous oil and hazardous material disposal sites. The contract had a 2-year duration, but was recently renewed. We have completed multiple site investigations/cleanups under this contract.

Phase I/II/III Environmental Site Assessments // Various Locations

Dave currently acts as Stantec's Due Diligence Manager for the Portsmouth office. In this capacity, he has responsibility for supervising most of the Phase I, II and III Environmental Site Assessments (ESAs) managed by the local Stantec office (well over 500 completed in the last 5 years). Phase I/II/III clients have ranged from federal agencies such as the Federal Deposit Insurance Corporation, the FAA, and the Resolution Trust Corporation, to multiple commercial clients such as utilities and banks, to private individuals. Dave has supervised the completion of ESAs in all New England states, as well as most of the remaining states and in Canada, thereby acquiring a wide-ranging knowledge of applicable state and federal hazardous waste, solid waste, water supply, and petroleum regulations.

6B

**WORK
EXPERIENCE**

APPLICABLE WORK EXPERIENCE

Stantec has been providing municipal roadways construction engineering and inspection throughout our time working in New Hampshire. Much of this work has been through the LPA program, and includes both Federal and State Aid projects. Recent projects of Stantec's that involved construction engineering and inspection roles, include:

→ Similar Project Qualifications + Personnel Matrix

	RELEVANT SERVICES						PERSONNEL									
	LPA Program – Federal Funds	State Aid Bridge Program	State Aid Highway Program	On-Site Construction Observation	Construction Phase Office Support	Contaminated Materials Support	Gerard Fortin	David McNamara	Dan Taylor	Jonathan Bourque	John Fortin	Seth Potter	Glenn Burton	Michael Leach	Leigh-Anne Sapienza	Dave Allwine
Strafford Square Intersection Improvements, Rochester, NH	X			X	X	X	X	X		X	X					X
Old Lake Shore Road Bridge, Gilford, NH		X		X	X		X	X		X				X		X
Center Street Improvements, Wolfeboro, NH			X	X	X	X	X	X		X				X		X
Mascoma River Bridge Rehabilitation, Lebanon, NH		X		X	X	X	X	X				X				
Bennington Village Safety Improvements Phases I + II, Bennington, NH	X			X	X			X								
Sagamore Creek Bridge Replacement, Portsmouth, NH	X			X	X	X		X								
Pillsbury Road to Mammoth Road Sidewalk, Londonderry, NH	X			X	X		X			X	X			X		
Dublin Village Safety Improvements, Phases I, II, + SRTS, Dublin, NH	X			X	X			X		X						
Downtown Streets SRTS, Wolfeboro, NH	X			X	X	X	X			X		X		X		X
Route 28 Page Road Intersection Improvement, Londonderry, NH			X	X	X		X			X				X		
Main Street Reconstruction, Salem, NH				X	X		X			X	X			X		
Stiles Road Reconstruction, Salem, NH				X	X		X			X				X		
Slayton Hill Road Reconstruction, Lebanon, NH				X	X			X								
Dulac Street Reconstruction, Lebanon, NH				X	X			X								
Mascoma River Greenway, Lebanon, NH				X	X			X								

STRAFFORD SQUARE INTERSECTION IMPROVEMENTS

ROCHESTER, NH // ONGOING

The Strafford Square Intersection Improvements project is a long awaited upgrade to this outdated, confusing and dangerous intersection near the heart of Rochester, NH. The project involved two phases of construction, the first relocated the existing aerial lines underground, along with associated improvements to existing water, sewer and drainage infrastructure.

The second phase replaced the heavily skewed, dangerous intersection with a modern multilane roundabout. The new roundabout more efficiently and safely manages traffic through this congested intersection, while enhancing safety for all uses and creating a new gateway to downtown Rochester.

The roundabout opened to traffic in the fall of 2023, with final punchlist, paving and landscaping items planned for the spring of 2024. Stantec was responsible for final design, extensive utility coordination, permitting and updates to the original NEPA document. We are currently providing Construction Administration services for the project.



OLD LAKE SHORE ROAD BRIDGE

GILFORD, NH

A **State Aid Bridge project**, Stantec provided the design, including hydraulics, geotechnical, bridge and roadway, permitting, and construction administration services for the replacement of the Old Lake Shore Road bridge over the Gunstock Brook in Gilford, NH. The project was funded through the State Aid Bridge Program.

Constructed in 1927, the original 32-foot-long bridge was comprised of a two-span reinforced concrete deck slab supported on mass concrete abutments and a lightly-reinforced concrete pier, all founded on spread footings.

The new bridge (shown above) replaced the failing 92-year concrete slab bridge. It is designed to meet current stream crossing guidelines, extending the existing two span 32 foot long bridge to a single 42 foot span utilizing precast concrete beams. It will also serve to widen the existing narrow 21-foot roadway width to 24-feet, install new bridge rail and approach rail. Construction was completed on time and under budget early in the spring of 2020.



CENTER STREET IMPROVEMENTS

WOLFEBORO, NH

A complex, multi-disciplined **State Aid Highway project**, Stantec provided full time inspection throughout construction. Municipally managed, the project reconstructed of 1,900 feet of Center Street (NH Route 28/109A) and 500 feet of Lehner Street. New curbing and sidewalks were part of the project scope, as was inclusion of a Rectangular Rapid Flashing Beacon (RRFB) and new lighting at a pedestrian crossing.

The roadway reconstruction included a new closed drainage system within the project limits. In addition to the new roadway drainage system, the drainage improvements also included up-grades with construction of a new twin 24-inch piping system to the stormwater pumping station that discharges to the Back Bay swale and controls excessive stormwater flow during major storm events. The project included replacement of 500 feet of existing water line with new 8-inch ductile iron water line, including new water services to the homes and businesses in the neighborhood. The project also included replacement of sewer mains and services along portions of Center Street and Lehner Street.

The scope of the project included assisting the town with easement acquisition, preparing environmental and cultural resources documentation, and obtaining the necessary permits from the NHDES Wetlands Bureau and NHDES Wastewater Bureau. We prepared construction documents to meet the requirements of NHDOT LPA municipally managed projects. Stantec also provided bid assistance and engineering services during construction through its completion in fall of 2019. In addition to typical construction administration services, the project was construction adjacent to three gas stations with groundwater management and monitoring zones, and we provided specialty services with monitoring of soils and air quality during construction.

Stantec



MASCOMA RIVER BRIDGE REHABILITATION

LEBANON, NH

This **State Aid Bridge project** involved the removal and replacement of the bridge deck, steel beams, and bearings of a 62-foot single span roadway bridge carrying U.S. Route 4 / N.H. Route 10 / Mascoma Street over the Mascoma River.

The pre-construction single-span bridge was constructed in 1954 and encompassed a widening and replacement of an earlier two-span bridge over the Mascoma River. The existing reinforced concrete abutments are founded on exposed bedrock, and remained in place. Abutment backwall reconstruction, minor substructure repairs, and accommodations for existing and future utilities were included in the rehabilitation. A single lane of westbound traffic was maintained over the bridge throughout construction, with eastbound traffic detoured around the construction site. The proposed bridge rails were revised to a more aesthetic look desired by the City of Lebanon that are also compliant with crash safety standards. The intent is for this detail to become the standard for City-owned bridges.

Construction was completed, on time and under budget in the fall of 2019.



BENNINGTON VILLAGE SAFETY IMPROVEMENTS, PHASE II

BENNINGTON, NH

Transportation Enhancement (TE) project. Bennington Village in NH is a National Register Historic district at the convergence of State Routes 31 and 47, in the protected Shoreland of the Contoocook River. The condition of the transportation and drainage infrastructure had deteriorated over the years, raising several safety concerns. These pedestrian safety issues affected ten (10) different roadways in the thickly settled downtown village setting, giving rise to Stantec's Phase I and Phase II federally funded TE projects.

During the first phase of this municipally managed, NHDOT LPA project, Stantec assessed the existing study area to identify potential improvements including intersection and roadway realignments, sidewalk locations and width adjustments and expanded landscape buffers. In typical "urban" design fashion, feasible alternatives were constrained to varying degrees by roadway right-of-way, private property features, accessibility, and topography. With the existing conditions assessed and the Town's Vision fresh in mind, Stantec developed feasible improvement alternatives that led to the two-phased Consensus Master Concept Plan. Following completion of Phase I construction in 2011, the Town moved forward with a second phase. Stantec designed this phase, which included pedestrian safety improvements, drainage upgrades and improved intersection definition at the complex Main Street/Eaton Avenue/Bible Hill Road/Antrim Road intersection. Stantec designed new and upgraded sidewalks, a reduction in pavement to increase green space and improve stormwater filtration, as well as aesthetic improvements. Phase II construction was completed in the fall of 2016.



SAGAMORE CREEK BRIDGE REPLACEMENT

PORTSMOUTH, NH

State Aid Bridge project. The Sagamore Bridge spans a tidal, navigable channel, and was a 400-foot long 3-span continuous steel girder and floorbeam structure. The harsh saltwater environment and road salt carryover had caused severe deterioration of the floorbeams and other components of the bridge. We provided the city design for the scheduled bridge replacement under NHDOT's Municipal Off-system Bridge Replacement & Rehabilitation (MOBRR) program. The new 420 foot long bridge is comprised of a three span haunched steel plate girder superstructure. The new profile and structure type allowed for a nearly 3 foot increase in vertical clearance under the bridge, alleviating a restriction that forced many of the commercial fisherman passing under the bridge to time their trips under the bridge around certain tidal conditions. The project was bid in the fall of 2013, with construction beginning immediately after award, in order to comply with environmental requirements to complete in-water work during the winter months. Construction was completed on time in the spring of 2015 under the original budget. Due to the funding through the MOBRR program, the design and construction of the project followed NHDOT's LPA guidelines. Stantec was responsible for carrying out the design and construction oversight under this program

NH ROUTE 101 CORRIDOR PEDESTRIAN SAFETY IMPROVEMENTS PROJECT

DUBLIN, NH

Working in concert with local and regional officials, and a wide variety of stakeholder groups, we created a Consensus Master Concept Plan for pedestrian safety improvements and traffic calming along NH Route 101 through the national register listed historic Dublin Village. This federally funded project received special attention from NHDOT as a pilot project for flexibility in design and implementation of traffic calming measures on a major state arterial road. Stantec received an ACEC-NH Engineering Excellence Award for transportation projects after the completion of construction on the **Phase I TE LPA project**.

The **Phase II TE LPA project** consisted of the realignment of the Old Common Road and Route 101 intersection and minor realignment of approximately 560 linear feet of Route 101 for sight distance and safety improvements. Work also included a gateway median area on Route 101 with low-lying vegetation, slope work for improved sight distance at the Dublin Road intersection, an ADA-compliant crosswalk across Route 101, 530 linear feet of sidewalk, granite curb, upgraded closed drainage system, and lighting.

A nearby **Safe Routes to School (SRTS)** project was also designed concurrently by Stantec. The SRTS project consisted of an ADA-compliant crosswalk across Route 101, approximately 300 linear feet of concrete sidewalk with vertical granite curb, minor pavement widening and approximately 140 linear feet of dry-laid stone retaining wall at the entrance to the Dublin Consolidated School.

Phase II for the corridor construction was largely completed in the fall of 2017, with minor closeout work completed in the spring of 2018.



PILLSBURY/MAMMOTH ROAD SIDEWALK + MULTI-USE PATH

LONDONDERRY, NH

Federal Congestion Mitigation Air Quality (CMAQ) Program project. Our team led the design and construction of 1.2 miles of new sidewalk/multi-use path through our civil engineering and landscape architecture services. Along Mammoth Road (State Route 128) and Pillsbury Road the project would improve pedestrian access from the surrounding neighborhoods to the high school, middle school and two (2) elementary schools.

The design incorporated a standard 8-foot-wide sidewalk with granite curb, as well as a 10-foot-wide multi-use path which meanders through adjacent apple orchards along Pillsbury Road. The sidewalk was constructed from Wilshire Drive to Mammoth Road along Pillsbury Road, and from Pillsbury Road to the Londonderry Middle School along Route 128. The goal of the project was to improve pedestrian facilities and access near the town center including the schools, the library, and town hall. The sidewalk also improved access to the town commons, the Morrison House (a historic museum) and historic apple orchards.





Design with community in mind