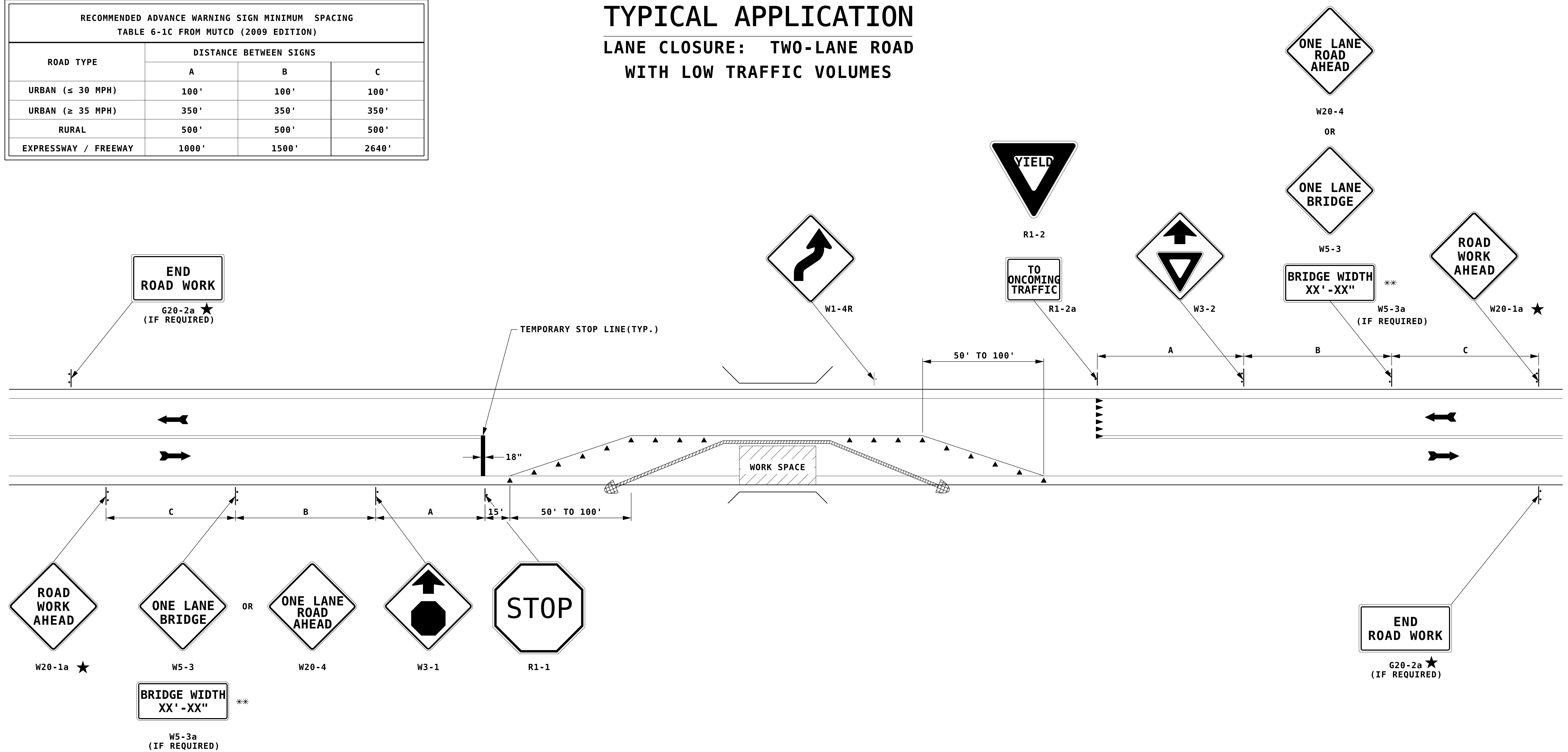


RECOMMENDED ADVANCE WARNING SIGN MINIMUM SPACING TABLE 6-1C FROM MUTCD (2009 EDITION)			
ROAD TYPE	DISTANCE BETWEEN SIGNS		
	A	B	C
URBAN ( $\leq 30$ MPH)	100'	100'	100'
URBAN ( $\geq 35$ MPH)	350'	350'	350'
RURAL	500'	500'	500'
EXPRESSWAY / FREEWAY	1000'	1500'	2640'

## TYPICAL APPLICATION

### LANE CLOSURE: TWO-LANE ROAD WITH LOW TRAFFIC VOLUMES



### GENERAL NOTES

- ★ SEE AMENDMENT NO. 10 ON TC-1
- \*\* POSTED BRIDGE WIDTH SHALL BE 1 FOOT LESS THAN ACTUAL WIDTH.
- 1. THIS TYPICAL APPLICATION SHOULD BE USED AS AN ALTERNATE TO MUTCD FIGURE TA-11 WHEN CONSTRUCTION ACTIVITIES ARE FOR A PERIOD LONGER THAN THAT CONSIDERED INTERMEDIATE-TERM WORK (SEE MUTCD SECTION 6G.02)
- 2. EXISTING PAVEMENT MARKINGS SHALL BE REMOVED AND TEMPORARY MARKINGS INSTALLED AS ORDERED.
- 3. REGULATORY SIGN PLACEMENT SHALL BE APPROVED BY BUREAU OF TRAFFIC.

- 4. HAZARD IDENTIFICATION BEACONS OR TYPE A FLASHING WARNING LIGHTS MAY BE MOUNTED WITH WARNING SIGNS, IF WARRANTED.
- 5. THE USE OF BARRIER IS ANTICIPATED FOR MOST SITUATIONS REQUIRING APPLICATION OF THIS LANE CLOSURE. REQUIRED BARRIER PROTECTION SHALL BE DETERMINED AS DESCRIBED IN THE MOST CURRENT EDITION OF THE ROADSIDE DESIGN GUIDE AS ADOPTED BY THE DEPARTMENT TAPER RATES FOR BARRIER ARE FOUND ON THE PORTABLE CONCRETE BARRIER STANDARD (GR-23).
- 6. CRASH CUSHIONS SHALL BE DELINEATED WITH TYPE 3 OBJECT MARKERS. SEE MUTCD FIGURE 2C-13.

LEGEND	
	PORTABLE BARRIER
	CHANNELIZING DEVICES
	IMPACT ATTENUATOR
	YIELD LINES

NOT TO SCALE

STATE OF NEW HAMPSHIRE SPECIAL DETAILS				
DEPARTMENT OF TRANSPORTATION		BUREAU OF HIGHWAY DESIGN		
<b>LANE CLOSURE: TWO-LANE ROAD WITH LOW TRAFFIC VOLUMES</b>				
REVISION DATE	DGN	STATE PROJECT NO.	SHEET NO.	TOTAL SHEETS
09-26-2023	twlnrd-lowvol-ce	-	1	1