

Letter of Interest
for
**Statewide On-Call Construction Engineering and Inspection Services
Prequalified List of Consultants for Locally Administered Local Public
Agency (LPA) Qualifications-Based Selection Contracts**

February 2, 2024



Submitted to:
Mr. Tobey L. Reynolds, P.E.
Director of Project Development
Consultant Committee Chairman
NH Department of Transportation
7 Hazen Drive, P.O. Box 483
Concord, NH 03302-0483

Submitted by:

CMA
ENGINEERS

1 Sundial Avenue, Suite 510N
Manchester, NH 03103



Section 1

Introduction Letter





February 2, 2024

Mr. Tobey L. Reynolds, P.E.
Director of Project Development
Consultant Committee Chairman
NH Department of Transportation
P.O. Box 483, 7 Hazen Drive
Concord, NH 03302-0483

**RE: Letter of Interest:
Statewide On-Call Construction Engineering and Inspection Services Prequalified List of Consultants for
Locally Administered Local Public Agency (LPA) Qualifications-Based Selection Contracts**

Dear Mr. Reynolds:

Over the past decade, CMA Engineers has purposefully and carefully developed a sector within the company that is focused on the design and construction of locally administered projects. We have assembled a skilled team of LPA/OAOC certified (formerly OFC) staff who have prepared, administered, overseen, documented and closed out numerous LPA construction projects. CMA Engineers brings the responsiveness and commitment that clients desire and deserve, regardless of the project size, complexity, or physical location. We are immediately available to respond and are confident that our qualified team can provide prompt, responsive service.

CMA Engineers is a civil, structural, and environmental consulting engineering firm with offices in Portsmouth and Manchester, NH, and Portland, ME. The firm has represented over 100 New Hampshire municipalities on a wide variety of project types since 1988 and is currently supporting the Department and numerous municipalities using NHDOT's various funding programs. We provide construction services for our design projects, having completed over \$100 million in construction projects over the last 10 years. We have provided the construction services on locally administered, State and/or Federally funded, projects that have been designed both in-house and by others in conjunction with NHDOT, which include Transportation Enhancement (TE), Highway Safety Improvement Program (HSIP), Safe Routes to School (SRTS), Congestion Mitigation and Air Quality (CMAQ), Transportation Alternatives Program (TAP) and State Bridge Aid (SBA) Program.

Through our construction experience, we have developed seasoned staff that have knowledge and experience to handle the core construction services elements associated with locally administered LPA projects:

- Construction Administration and Oversight
- Construction Related Engineering
- Environmental Expertise
- Contractor Compliance with Plans and Specifications
- Coordination and Adherence of OAOC Project Documentation

This submittal presents and describes the experience, capabilities and advantages that CMA Engineers provides for this assignment. We are eager to assist and look forward to the opportunity to discuss further.

Very truly yours,
CMA ENGINEERS, INC.

Jason J. Beaudet, P.E.
Project Manager

Philip Corbet, P.E.
Chief Civil Engineer

Section 2

Project Understanding and Approach



PROJECT UNDERSTANDING

CMA Engineers has a comprehensive understanding on how to successfully manage LPA projects during the construction phase. When projects enter construction, they require a similar but different skill set compared to design projects. This is especially true for municipalities that administer projects via the Local Public Agency (LPA) procedure. Under the NHDOT/LPA/Office Access, Opportunity and Compliance (OAOC) [formerly the Office Federal Compliance (OFC)] guidelines, projects during the construction phase require the following fundamental elements:

- Project management by a NH licensed PE with LPA and OAOC certification
- Near full-time inspection by an LPA and OAOC certified inspector
- Construction administration from award through project closeout
- Material testing in conformance with NHDOT guidelines
- Project documentation that meets OAOC requirements

For a Statewide On-Call application, a firm will need to provide inspections on a variety of projects types requiring inspectors that have a breadth of experience and knowledge, while also employing technical staff with similar backgrounds to provide support as needed. Similarly, a firm needs the ability, willingness, and experience to handle projects throughout the state. LPA projects no longer allow the same consultant to be used for the design and construction of a project. This requires those overseeing construction to quickly and effectively familiarize themselves with projects that others have designed (with possible limited design firm coordination).

On occasion, projects will present unique and specific needs that require the skills of a specialist, often outside the engineering field, such as archaeological or historical experts. Firms will need to determine when these services are needed, the level of involvement required, and the most appropriate project team to select for the given situation. Similarly, specialty inspection and material testing may be needed, which would be identified in the beginning of the construction phase.

CMA Engineers has a clear and thorough understanding of the projects needs during the construction phase, which enables us to develop a strong and effective project approach, ensuring its success.

PROJECT APPROACH

The CMA Engineers' project approach is predicated on a typical LPA project that requires standard construction administration, inspection, and material testing. The team has the technical expertise and experience to complete all aspects of the project to meet routine project objectives. CMA Engineers has the abilities and established subconsultant relationships to undertake unique project elements, if a project requires them. Elements of our approach includes:

Construction Administration and Oversight

Our current staff includes 16 individuals that are both LPA and OAOC certified, requirements for construction administration and oversight of LPA projects, providing us with the depth to administer and oversee construction projects successfully. Our team has robust and diverse engineering backgrounds that allow

us to oversee a wide range of projects, such as roadway reconstruction/rehabilitation; intersection improvements/realignments; utility coordination; traffic control development; sidewalk and pedestrian crossings; stormwater management and drainage design; ADA compliance audits/upgrades; and multi-use path/recreation trail construction/rehabilitation. CMA Engineers' approach to construction administration/oversight is proven with primary components of an on-site Resident Project Representative (RPR) reporting to the project manager. Additional individuals are woven into the process in key areas to allow for supplemental quality assurance and the broadening of project knowledge amongst staff. In addition to our staff, we have established working partnerships with GZA GeoEnvironmental (GZA) for environmental inspection, and S.W. Cole Engineering (SW Cole) for material testing and specialized inspections, to provide our clients with the best services available.

- Robust On-Site Inspection Capacity with Diverse Engineering Backgrounds
- Specialized Inspection Capabilities
- Material Testing

Construction Related Engineering

With CMA Engineers' extensive construction experience, we are prepared to handle issues that arise during construction. In addition to observing real time construction, our RPR's review project requirements for upcoming work with our PM's to anticipate issues prior to project elements being constructed. When engineering needs present themselves, we use a two-phase approach between the RPR and office engineering staff. This approach allows the benefit of real-time observation in conjunction with office resources and personnel. This dynamic has been further strengthened with the use of live video conferencing between the RPR and office staff. CMA Engineers has used this approach to deal with numerous construction related issues, such as change orders, discrepancies between anticipated and actual conditions, and utility conflicts. With CMA Engineer's LPA construction work, we have developed the knowledge and strategies to efficiently and appropriately deal with construction engineering while meeting NHDOT/LPA/OAOC requirements.

- Multi-Phased Approach
- Realtime Virtual Conferencing
- NHDOT/LPA/OAOC Requirement Knowledge

Environmental Expertise

Our team has provided permitting and environmental research for many projects, including permitting for wetlands, shoreland, Alteration of Terrain, and environmental coordination related to natural, cultural, and historic resources. We are well versed in the efforts required and have been successful in attaining NEPA complete status on LPA projects. This experience has translated directly into construction to ensure that the directives and commitments are implemented correctly and maintained during construction. The team's capabilities are further enhanced with GZA's environmental inspection capabilities, including certified stormwater/erosion control personnel.

- NEPA Process Experience
- Familiarity with Environmental Permitting Requirements
- Environmental Inspection Capabilities

Contractor Compliance with Plans and Specifications

CMA Engineers' RPRs review contract plans and documents prior to the preconstruction meeting to ensure they understand all aspects of the project. We use the preconstruction meeting to highlight and discuss key items, responsibilities, procedures, and protocols that the contractor must meet in accordance with the contract documents. CMA Engineers has found this to be highly effective in establishing a professional relationship with the contractor, outlining what is expected of them, and fostering a team mentality. While in the field, our RPRs are in continuous communication with the construction PM to review current and upcoming tasks to ensure they meet/exceed the plan and specification requirements. During active work, the RPRs regularly check the physical/technical metrics of the construction to confirm adequacy and to avoid costly and time-consuming rework.

- Detailed Preconstruction Meeting
- Foster Team Mentality
- Preemptive Metric Review and Routine Field Confirmation

Coordination and Adherence of OAOC Project Documentation

With extensive LPA/OAOC construction oversight, CMA Engineers has the ability, knowledge, and experience to meet any project documentation needs. We employ a collaborative and transparent approach to the documentation, allowing all parties involved (contractor, client, NHDOT, OAOC) the ability to view and document as they see fit for their own needs, while CMA Engineers assumes the overall responsibility of documenting the entire project. The RPR maintains continuous paper documentation on-site, while a digital version is kept in the office. This not only meets the LPA and Federal requirements, but also ensures project continuity. CMA Engineers' diligent and thorough documentation has allowed our LPA projects to routinely achieve satisfactory ratings during the OAOC field audit process. Upon project completion, CMA Engineers compiles all the project documentation and provides it digitally to the client and NHDOT for their records.

- Transparent Approach
- Routine Satisfactory OAOC Audits

CLOSING

The CMA Engineers' team has a strong and thorough understanding of the construction oversight and administration of LPA projects. We bring the projects a complete multi-disciplinary team with NHDOT/LPA/OAOC experience and capability to serve clients successfully, while maintaining the overall goal of constructing a properly built, compliant, and documented project.

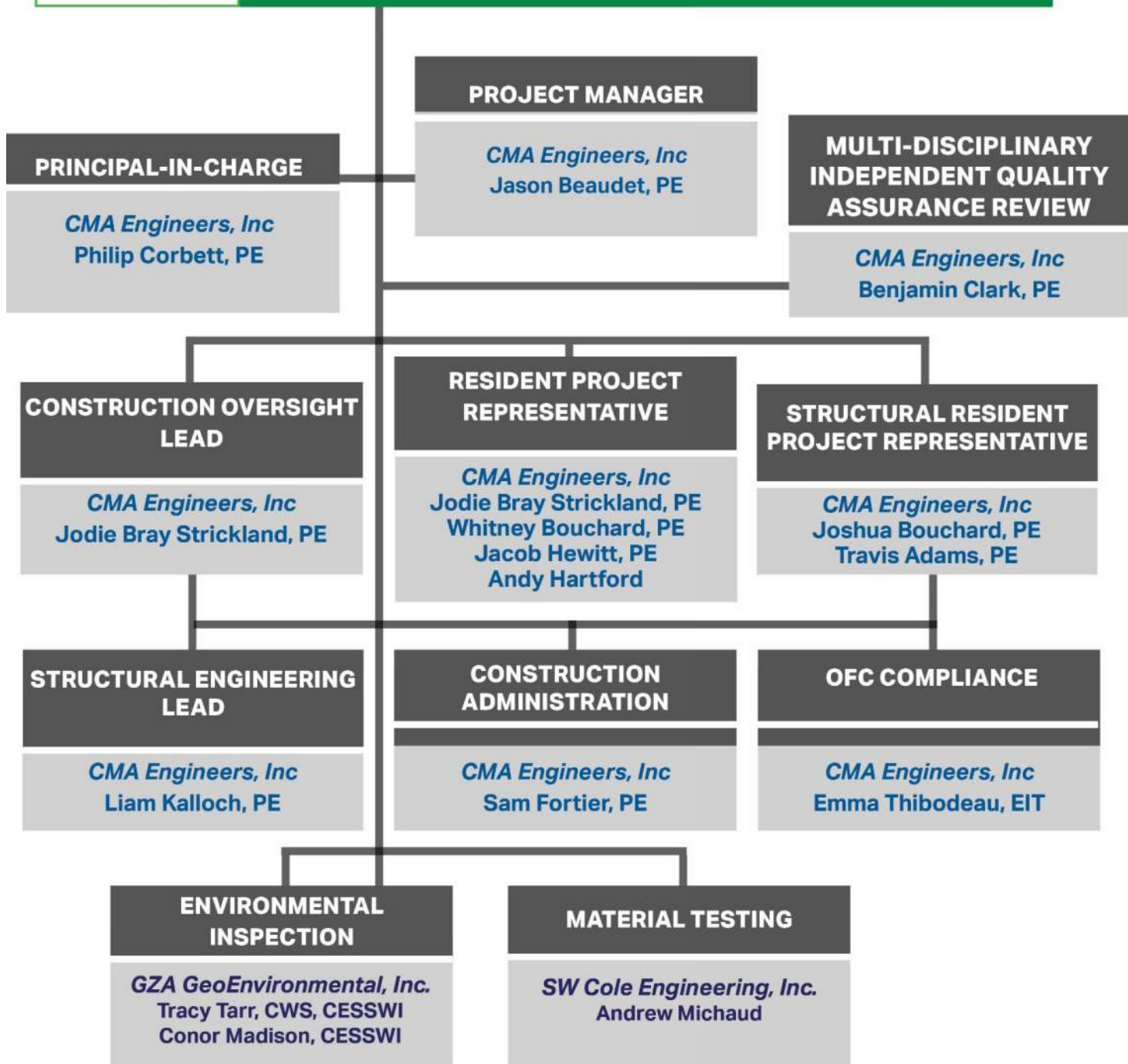
Section 3

Organizational Chart





New Hampshire Department of Transportation



Section 4

Project Team



Project Team

CMA Engineers has assembled a project team with extensive experience in construction engineering and inspection services for locally administered LPA projects for numerous communities throughout New Hampshire. The team members are based on a typical LPA project that requires standard construction administration, inspection, and material testing. If required, CMA Engineers has the abilities and established subconsultant relationships to assess specific project elements. The team has significant experience with projects utilizing NHDOT’s municipally managed process according to the NHDOT LPA Manual and is thoroughly familiar with the program requirements.

Our proposed Project Manager, Jason Beaudet, PE has a particularly strong background in LPA construction, is head of our NHDOT LPA Program sector for both design and construction and has well-established NHDOT relationships. In addition to our experienced staff, we are enlisting the services of GZA GeoEnvironmental, Inc. (GZA) for environmental monitoring, along with S.W. Cole Engineering, Inc. (SW Cole) for material testing. CMA Engineers has a very successful and long-standing partnership with both GZA and SW Cole.

The members of the project team are as indicated in the classification table below and select team member resumes are in the appendix.

CONSTRUCTION ENGINEERING and INSPECTION SERVICES IN SUPPORT OF LPA PROJECTS		YEARS OF EXPERIENCE	YEARS WITH FIRM	TECHNICIAN INSPECTOR - LEVEL I	TECHNICIAN INSPECTOR - LEVEL II	TECHNICIAN INSPECTOR - LEVEL III	ENGINEER INSPECTOR - LEVEL I	ENGINEER INSPECTOR - LEVEL II	ENGINEER INSPECTOR - LEVEL III	PROJECT MANAGER/CON. ENG OF RECORD	ENVIRONMENTAL INSPECTOR	NH LICENSED PROFESSIONAL ENGINEER	LPA CERTIFIED	OAOC CERTIFIED	CESSWI CERTIFIED	CPESC CERTIFIED	NETTCP CERTIFIED
Key Personnel	Project Role																
Jason Beaudet, PE	Project Manager	19	9					✓	✓			✓	✓	✓			
Phil Corbett, PE	Principal-In-Charge	23	14					✓	✓			✓	✓	✓			
Benjamin Clark, PE	Multi-Disp. Ind. QA Review	21	1					✓	✓			✓					
Jodie Bray Strickland, PE	Construction Oversight Lead	20	20					✓	✓			✓	✓	✓			✓
Liam Kallock, PE	Structural Engineering Lead	10	10					✓				✓	✓	✓			
Joshua Bouchard, PE	Structural RPR	21	18					✓	✓			✓	✓	✓			
Travis Adams, PE	Structural RPR	8	8				✓					✓	✓	✓			
Sam Fortier, PE	Construction Administration	13	7					✓				✓	✓	✓			
Whitney Bouchard, PE	Resident Project Representative	9	9					✓				✓	✓	✓			
Jacob Hewitt, PE	Resident Project Representative	7	2					✓				✓	✓	✓		✓	
Andy Hartford	Resident Project Representative	40	6	✓								✓	✓	✓			
Emma Thibodeau, EIT	OAOC Compliance	3	3				✓					✓	✓				
Sub -Consultants																	
GZA GeoEnvironmental																	
Tracy Tarr, CWS, CESSWI	Environmental Inspector	23	11								✓					✓	
Conor Madison, CESSWI	Environmental Inspector	6	6								✓					✓	✓
SW Cole Engineering																	
Andrew Michaud	Material Testing	23	23	✓						✓							✓

Project Manager: *Jason Beaudet, PE* is LPA/OAOC certified and brings extensive knowledge of the development, design, management, and construction administration of transportation projects of all sizes throughout New England. Jay is head of our NHDOT LPA Program sector for both design and construction, serving as the construction engineer of record and will be the primary contact for the project.

Principal-In-Charge: *Philip Corbett, PE* is LPA/OAOC certified and has a strong background in municipal engineering, roadway design, pedestrian improvements, traffic analysis, site design, and drainage projects. Mr. Corbett has completed the design and construction administration of numerous LPA funded projects and served as principle for many as well. He also serves as Chief Civil Engineer for the firm

Multi-Disciplinary Independent Quality Assurance Review: *Benjamin Clark, PE* (LPA/OAOC certification scheduled spring 2024) is a Senior Project Manager for CMA Engineers with over 20 years of design and management experience. Ben has a wide range of experience including residential, commercial, military, and municipal resident engineering services. His background includes management and providing technical expertise for large-scale, complex domestic and international multidisciplinary infrastructure projects in support of the Department of Defense.

Construction Oversight Lead/Resident Project Representative: *Jodie Bray Strickland, PE* is LPA/OAOC certified and has significant experience in the construction of and has served as a resident engineer and in contract administration support on numerous projects, including roadway and utilities projects, environmental and solid waste projects, including LPA/OAOC projects. She manages the construction inspection program for the firm and provides resident inspection services for numerous projects.

Resident Project Representative: *Whitney Bouchard, PE* is LPA/OAOC certified and has served as both the resident project representative in the field, and internal OAOC compliance coordinator on LPA/OAOC projects. She has completed historic/cultural/environment research, coordination, and compliance reviews on LPA/OAOC projects.

Resident Project Representative: *Jacob Hewitt, PE* is LPA/OAOC certified and is certified to perform environmental inspections, and has extensive expertise related to contractor compliance, negotiations, and coordination, having completed construction design and oversight for a variety of projects across the country.

Resident Project Representative: *Andy Hartford* is LPA/OAOC certified and has over 40 years of engineering experience in construction and as an engineering & maintenance manager in the paper industry. He is a construction inspector for CMA Engineers based in Lancaster, NH

Structural Engineering Lead: *Liam Kalloch, PE* is LPA/OAOC certified and has experience designing and managing project teams for the development of structural design and construction projects. He specializes in the design, analysis, rating, and detailing of a wide range of municipal and DOT owned bridges. He has also completed numerous construction oversight and construction administration for various project types of structural projects, including locally administered, and LPA/OAOC projects.

Structural Resident Project Representative: *Joshua Bouchard, PE* is LPA/OAOC certified with experience in culvert design, water and sewer, utility design, hydrologic and hydraulic analysis, roadway design and modeling, environmental permitting, stormwater and drainage design, utility coordination, and contract plans and documents. Mr. Bouchard has completed the design and construction administration of numerous State and Federally funded projects, including LPA projects.

Structural Resident Project Representative: *Travis Adams, PE* is LPA/OAOC certified and specializes in the design, analysis, and rating of municipal, DOT, and privately owned bridges and large culverts. He has worked on bridge projects in several New England states, including NHDOT SBA projects. His construction experience includes a wide variety of bridge types and ages, including many types of buried structures.

Construction Administration: *Sam Fortier, PE* is LPA/OAOC certified and specializes in the design of roadway and transportation projects. Sam has developed the knowledge necessary to design projects related to urban and rural roadway design, complete streets design, multi-use path design, pedestrian and bicycle facilities, and traffic control. He has served as the contract administrator on numerous LPA/OAOC construction projects.

OAOC Compliance: *Emma Thibodeau, EIT* is LPA/OAOC certified and has served as internal OAOC compliance coordinator on other LPA/OAOC projects. Emma has an excellent working knowledge of the project requirements related to Federal compliance. Additionally, she has completed the historic/cultural/environment research and coordination on other LPA/OAOC projects.

Environmental Inspection (GZA GeoEnvironmental, Inc.):

Tracy Tarr, CWS, CESSWI is an environmental consultant specializing in natural resources identification, assessment, permitting, and construction monitoring. She routinely provides construction monitoring and interfaces with contractors, local boards, state agencies, and federal regulators to provide environmental compliance oversight to meet project milestones.

Conor Madison, CESSWI, CPESC, is an environmental scientist specializing in construction monitoring and reporting, natural resources identification, data collection, and environmental assessments. He provides a variety of professional services including natural resource mapping, protected species surveys, GIS mapping, and environmental compliance monitoring for utility construction and maintenance activities.

Material Testing (S.W. Cole Engineering, Inc.): *Andrew Michaud* is the construction services manager for SW Cole. He is responsible for contract and business development, project management and assisting with testing services such as soil density, concrete, slab moisture, and performing special inspections and associated laboratory testing.

Section 5

References



Project References

CMA Engineers is pleased to provide the following references who are familiar with our Project Team’s experience and performance related to Construction Engineering and Inspection Services from working with members of the CMA Engineers’ team on similar projects.

Reference	Associated Projects
<p>Thomas Jameson, P.E. Project Manager NHDOT Bureau of Planning & Community Assistance</p> <p>thomas.e.jameson@dot.nh.gov (603) 271-3462</p>	<p>Stratham 27771: Town Center Project Hooksett 20259: College Park Drive Salem 40432: Phase II Bike-Ped Corridor Claremont 40435: East St. & Rail Trail Manchester 41361: Rockingham Rail Trail Durham (UNH) 41369: Main St. Sidewalk Manchester 29811: South Manchester Rail Trail</p>
<p>Owen Friend-Gray, PE Deputy Public Works Director City of Manchester ofriend@manchesternh.gov (603) 792-5302</p>	<p>Manchester 41361: Rockingham Rail Trail Manchester 29811: South Manchester Rail Trail</p>
<p>Peter Rice, PE Director of Public Works City of Portsmouth phrice@cityofportsmouth.com (603) 427-1530</p>	<p>Portsmouth 42350: Longmeadow Road Extension Portsmouth 14417: South Entrance Multi-Use Path Union Street Portsmouth Regional Stormwater Facility Portsmouth Athletic Fields Gosling Rd Ped, Bike, & Related Improvements Sagamore Avenue Reconstruction State Street Reconstruction</p>

Appendix

Resumes



EXPERTISE

- Pedestrian and Bicycle Facility Design
- Highway/Roadway Design
- Traffic Control
- NHDOT LPA Project Administration
- Federal Compliance
- AutoCad/Civil 3D
- MicroStation/InRoads 3D Modeling

EDUCATION

- M.S., Transportation Engineering (2008), University of Mass., Lowell
- B.S., Civil and Environmental Engineering (2004), University of Mass., Lowell

PROFESSIONAL REGISTRATIONS/CERTS.

Professional Engineer:

- New Hampshire
- Maine
- Vermont
- Massachusetts

Certifications:

- NHDOT LPA Certified
- NHDOT OAOC Certified
- MaineDOT LPA Certified

EXPERIENCE

- Consulting 19 years

PROFESSIONAL AFFILIATIONS

- National Society of Professional Engineers (NSPE) 2010 -Present

Mr. Beaudet is a project manager/senior project engineer with extensive knowledge and over 19 years' experience with the development, design, management, bidding and construction oversight of projects throughout New England. He leads the company's LPA sector. Jason expertise includes roadway reconstruction/rehabilitation, highway design, intersections, recreational trail design, multi-use path design, pedestrian & bicycle facilities, complete streets design, ADA compliance, utility coordination, ROW procurement, roadway design, highway design, traffic control, and the public involvement process. He has extensive knowledge related to the NHDOT LPA process and understands the critical steps and procedures that need to be completed.

- South Manchester Rail Trail, Manchester NH (LPA)
- Berlin Riverwalk Along the Androscoggin River, Berlin NH (LPA)
- Elwyn Road Side Path Project, Portsmouth NH (LPA)
- Wentworth Road Pedestrian Improvement Project, New Castle NH (LPA)
- Main Street Sidewalk and Roadway Reconstruction Project, Colebrook NH (LPA)
- Nashua Heritage Rail Trail East, Nashua NH (LPA)
- Bicycle-Pedestrian Corridor Phase VI, Salem NH (LPA)
- Rockingham Rail Trail Extension, Manchester NH (LPA)
- Main Street South Sidewalk Project, Durham NH (LPA)
- High Street, Campus Connector Trail & Memorial Dr. Project, Somersworth NH (LPA)
- Sidewalk Connectivity Project, Littleton NH (LPA)
- Bicycle-Pedestrian Corridor Phase II, Salem NH (LPA)
- Mildred C. Lakeway School SRTS Project, Littleton NH (LPA)
- Sidewalk & Rail Trail Improvement Project, Claremont NH (LPA)
- Kingston Road TAP Project, Exeter NH (LPA)
- Salmon Falls Road Improvements HSIP Project, Rochester NH (LPA)
- Cambridge Turnpike Improvement Project, Concord MA
- Town Center Improvement Project, Stratham NH (LPA)
- Loudon Road (NH Route 9) Concord, NH (LPA)
- East Concord Village Roundabout, Concord NH

EXPERTISE

- Site & Roadway Design
- Stormwater Management
- Utility Design
- Traffic Analysis

EDUCATION

- BS Civil Engineering (1999) University of Colorado, Boulder
- MS Civil Engineering (2005) University of Washington, Seattle

PROFESSIONAL REGISTRATIONS/CERTS.

Professional Engineer:

- New Hampshire
- Maine
- Florida
- Colorado

Certifications:

- NHDOT LPA Certified
- NHDOT OAOC Certified
- MaineDOT LPA Certified

EXPERIENCE

- Consulting 23 years

PROFESSIONAL AFFILIATIONS

- American Council of Engineering Companies of New Hampshire
NH Board Member
- Institute of Transportation Engineers-NH
Vice President, NH Chapter

Mr. Corbett has 23 years of experience in civil and transportation engineering. His background includes traffic analysis, planning and designing utilities, roadways, site design and stormwater management for commercial and residential facilities on several project assignments. Mr. Corbett is proficient in the use of AutoCAD, HydroCAD, and StormCAD.

- Longmeadow Road Extension, Portsmouth NH (LPA)
- Elwyn Road Side Path Project, Portsmouth NH (LPA)
- Wentworth Road Pedestrian Improvement Project, New Castle NH (LPA)
- Cambridge Turnpike Improvement Project, Concord MA
- College Park Drive Project, Hooksett NH (LPA)
- New Castle Sidewalk Project, New Castle, NH (LPA)
- Nashua Heritage Rail Trail East, Nashua NH (LPA)
- Sidewalk Connectivity Project, Littleton NH (LPA)
- Colebrook Elementary School SRTS Project, Colebrook NH (LPA)
- Henry Wilson & Farmington High School (SRTS), Farmington NH (LPA)
- Salmon Falls Road Improvements HSIP Project, Rochester NH (LPA)
- Mildred C. Lakeway School SRTS Project, Littleton NH (LPA)
- Agamenticus Road, Ogunquit ME
- Beach Shore Stabilization Projects, Ogunquit ME
- Pine Ledge Drive, Wells ME
- Main Street South Sidewalk Project, Durham NH (LPA)
- Portsmouth Athletic Fields, Portsmouth NH
- Portsmouth Regional Stormwater Facilities, Portsmouth NH
- Franklin Street Improvement Project, Laconia NH
- Union Avenue Improvements Project, Laconia NH
- Gosling Road Pedestrian, Bicycle and Related Improvements, Portsmouth NH
- Appleton Street Drainage Improvements, Laconia NH
- Lincoln Street Complete Streets Improvement Project, Exeter NH
- Sagamore Avenue Reconstruction, Portsmouth NH

Jodie Bray Strickland, PE
Project Engineer

EXPERTISE

- Stormwater management
- Design and Construction Administration
- Planning Board Reviews
- Water Quality Reporting

EDUCATION

- BS Civil and Environmental Engineering (2003) - University of New Hampshire

PROFESSIONAL REGISTRATIONS/CERTS.

Professional Engineer

- New Hampshire

Certifications:

- NHDOT LPA Certified
- NHDOT OAOC Certified
- NETTCP HMA Paving Inspection

EXPERIENCE

- Consulting 20 years

PROFESSIONAL AFFILIATIONS

- Engineers Without Borders - NH Professionals Chapter Board Member

Ms. Strickland is a project engineer with 20 years experience on a wide range of projects. Her strengths include design, review of engineering design projects for conformance with local regulations and construction oversight. Her robust experience with construction projects ranges from landfill expansions and closures to roadway reconstruction projects. Jodie has been involved with construction administration and oversight of multiple federally and state funded projects under NHDOT, FHWA and NHDES. Her strong interpersonal skills support successful interfacing between clients, contractors, state and federal agencies and the public. She is also experienced with water quality and environmental reporting for numerous landfill sites.

- South Manchester Rail Trail, Manchester NH (LPA)
- Longmeadow Road Extension, Portsmouth NH (LPA)
- Rockingham Rail Trail Extension, Manchester NH (LPA)
- Stratham Town Center Improvement Project Stratham NH (LPA)
- Woodman Park School Safe Routes to School (SRTS) Project, Dover, NH (LPA)
- Main Street South Sidewalk Project, Durham NH (LPA)
- Acorn Terrace Cooperative Water Project Phase I, II and III
- Forest Park Cooperative, Jaffrey NH
- Woody Hollow Cooperative, Boscawen NH
- Icey Hill Cooperative, Exeter NH
- Lincoln Street Phase II Project, Exeter, NH
- Water and Sewer Utility Improvements, Northumberland NH
- Sagamore Avenue Reconstruction, Portsmouth, NH
- Exeter-Hampton Housing Coop Utilities and Roadway Rehabilitation, Exeter NH
- Ash Street Pedestrian/Sidewalk Project, Hollis NH
- Culvert Replacements, New Durham, NH
- Lower Court Street Project, Portsmouth, NH
- Landfill Post Closure Monitoring throughout NH
- Planning Board Services: Hampton, Kittery, Barrington

Whitney A. Bouchard, PE
Project Engineer

EXPERTISE

- Environmental Engineering
- Water and Wastewater Design
- Permitting

EDUCATION

- BS Civil Engineering (2013) University of Maine, Orono
- MS Environmental Engineering (2015) University of New Hampshire

PROFESSIONAL REGISTRATIONS/CERTS.

Professional Engineer:

- New Hampshire

Certifications:

- NHDOT OAOC Certified
- NHDOT LPA Certified

EXPERIENCE

- Consulting 9 years

PROFESSIONAL AFFILIATIONS

- American Society of Civil Engineers (ASCE)
- New England Water Works Association (NEWWA)

Ms. Chamberlain has 9 years of experience in civil and environmental engineering projects. Her background includes planning, permitting, funding agency applications, design, bidding, construction administration, and resident engineering services for water distribution systems, sewer collection systems, drinking water treatment facilities, and sidewalk projects.

- Wentworth Road Pedestrian Improvement Project, New Castle NH (LPA)
- Elwyn Road Side Path Project, Portsmouth NH (LPA)
- Main Street South Sidewalk Project, Durham NH (LPA)
- High Street, Campus Connector Trail & Memorial Drive Project, Somersworth NH (LPA)
- Bicycle-Pedestrian Corridor Phase VI, Salem NH (LPA)
- Main Street South Sidewalk Project, Durham NH (LPA)
- Rockingham Rail Trail Extension, Manchester NH (LPA)
- Bicycle-Pedestrian Corridor Phase II, Salem NH (LPA)
- South Manchester Rail Trail, Manchester NH (LPA)
- Main Street Sidewalk and Roadway Reconstruction Project Colebrook NH (LPA)
- Nashua Heritage Rail Trail East, Nashua NH (LPA)
- Sidewalk & Rail Trail Improvement Project, Claremont NH (LPA)
- Kingston Road TAP Project, Exeter NH (LPA)
- East Concord Village Roundabout, Concord NH
- Sewer Feasibility Study, Litchfield NH
- Acorn Terrace Cooperative Water System Evaluation - Rochester NH
- Frost Cooperative, Derry NH
- Forest Park Cooperative, Jaffrey NH
- Woody Hollow Cooperative, Boscawen NH
- Icey Hill Cooperative, Exeter, NH
- Water and Sewer Utility Improvements, Colebrook NH
- Water and Sewer Utility Improvements, Northumberland NH

EXPERTISE

- Structural Engineering
- Bridge Engineering
- Foundation Design

EDUCATION

- University of New Hampshire, B.S. Civil Engineering, 2012
- University of New Hampshire, M.S. Civil Engineering 2013

PROFESSIONAL REGISTRATIONS/CERTS.

Professional Engineer:

- New Hampshire
- Maine

Certifications:

- NHDOT LPA Certified
- NHDOT OAOE Certified

EXPERIENCE

- Consulting 10 years

PROFESSIONAL AFFILIATIONS

- American Society of Civil Engineers

Mr. Kalloch is a project engineer with 10 years of experience, with substantial engineering expertise involving the design of bridge projects throughout Maine, New Hampshire and Massachusetts. Mr. Kalloch joined CMA Engineers, Inc. in September 2013 and has since developed a robust understanding of analysis and design of bridge structures, conceptual planning, construction administration, and the preparation of plans, calculations, specifications, and bid documents for construction.

- Freshet Road Bridge, Madbury NH (LPA)
- Bear Rock Road Bridge, Colebrook NH (LPA)
- NHDOT Rehabilitation of US Route 3 over NHRR, Laconia NH
- Court and Linden Street Bridges, Exeter NH
- Cambridge Turnpike Improvement Project, Concord MA
- Maine DOT Bridge Engineering Services, Statewide ME
- South Manchester Rail Trail, Manchester NH (LPA)
- Nute Road Bridge, Madbury NH (LPA)
- Nashua Heritage Rail Trail East, Nashua NH (LPA)
- High Street, Campus Connector Trail & Memorial Drive Project, Somersworth NH (LPA)
- Greenhill Road Bridge, Barrington NH (LPA)
- Main Street South Sidewalk Project, Durham NH (LPA)
- Ossipee Lake Road Bridge, Freedom NH (LPA)
- MainedOT Parsons Road Slope Stabilization, Presque Isle ME
- MainedOT Large Culvert Replacement, Patten ME
- MainedOT Large Culvert Replacement, Smyrna ME
- MainedOT Large Culvert Replacement, Oakfield ME
- Freedom Culvert, Freedom NH
- River Road Bridge, Ogunquit NH
- New Durham Culverts, New Durham NH
- Tuck's Point Seawall Reconstruction, Manchester-by-the-Sea MA
- Prestressed Concrete Pedestrian Bridge Repairs, Manchester-by-the-Sea MA

EXPERTISE

- Highway/Roadway Design
- Pedestrian and Bicycle Facility Design
- Traffic Control
- Stormwater
- Civil 3D
- MicroStation/InRoads 3D Modeling

EDUCATION

- B.S., Civil Engineering (2010), University of New Hampshire

PROFESSIONAL REGISTRATIONS/CERTS.

Professional Engineer:

- New Hampshire

Certifications:

- NHDOT LPA Certified
- NHDOT OAOE Certified

EXPERIENCE

- Consulting 13 years

PROFESSIONAL AFFILIATIONS

- National Society of Professional Engineers (NSPE) 2010 -Present
NH President 2018-2020
NH Vice President 2017-2018
NH State Director 2016-2017

Sam Fortier is a project engineer with 13 years of experience specializing in the design of roadway and transportation projects. Sam has developed the knowledge necessary to design projects related to urban and rural roadway design, complete streets design, multi-use path design, pedestrian and bicycle facilities, and traffic control. In addition to the design work, Sam has the knowledge to model projects in both AutoCad Civil 3D and Bentley InRoads, allowing issues to be found and resolved prior to construction.

- Longmeadow Road Extension, Portsmouth NH (LPA)
- South Manchester Rail Trail, Manchester NH (LPA)
- Nashua Heritage Rail Trail East, Nashua NH (LPA)
- College Park Drive Project, Hooksett NH (LPA)
- Agamenticus Road, Ogunquit ME
- Main Beach and Beach Street Revetment Repair, Ogunquit ME
- Durand Road Engineering and Construction, Randolph NH
- River Road Culvert, Ogunquit ME
- Bicycle-Pedestrian Corridor Phase VI, Salem NH (LPA)
- Rockingham Rail Trail Extension, Manchester NH (LPA)
- Main Street South Sidewalk Project, Durham NH (LPA)
- Sidewalk Connectivity Project, Littleton NH (LPA)
- Bicycle-Pedestrian Corridor Phase II, Salem NH (LPA)
- NHDOT Rehabilitation of US Route 3 over NHRR, Laconia, NH
- Sidewalk & Rail Trail Improvement Project, Claremont NH (LPA)
- Lincoln Street Project, Exeter NH
- Union Avenue Improvement Project, Laconia NH
- Kingston Road TAP Project, Exeter NH (LPA)
- Cambridge Turnpike Improvement Project, Concord, MA
- High Street, Campus Connector Trail & Memorial Dr. Project, Somersworth NH (LPA)
- MainedOT Large Culvert Replacement, Smyrna ME
- MainedOT Large Culvert Replacement, Oakfield ME

EXPERTISE

- Highway/Roadway Design
- Utility Coordination
- Project & Client Management
- Public Facilitation
- NHDOT LPA Project Administration
- AutoCAD Civil 3D

EDUCATION

- BS Civil Engineering (2002) -
University of New Hampshire

PROFESSIONAL REGISTRATIONS/CERTS.

Professional Engineer:

- New Hampshire
- Maine
- Massachusetts

Certifications:

- NHDOT LPA Certified
- NHDOT OAOC Certified

EXPERIENCE

- Consulting 21 years

PROFESSIONAL AFFILIATIONS

- National Society of Professional Engineers
- American Society of Civil Engineers
- Order of the Engineer

Mr. Bouchard is a civil engineer with 21 years' experience. He joined CMA Engineers, Inc. in July 2005 as a Project Engineer. Project experience includes planning, design, and construction administration of projects in the municipal and private sectors. As a Project Engineer, Mr. Bouchard is responsible for working in project teams for completion of projects from initial conceptual planning to design, permitting, bidding and construction of projects.

- Greenhill Road Bridge, Barrington NH (LPA)
- Nute Road Bridge Replacement, Madbury NH (LPA)
- Ossipee Lake Road Bridge, Freedom NH (LPA)
- Philbrick's Pond Culvert Inlet Improvements, North Hampton NH
- Main Street Sidewalk and Roadway Reconstruction Project, Colebrook NH (LPA)
- Colebrook Elementary School SRTS Project, Colebrook NH (LPA)
- Onway Lake Culvert Replacement, Raymond NH
- North Road Culvert Replacement, Kingston NH
- Town Drainage Improvements, New Durham NH
- Town Improvements, Ogunquit ME
- Burnham Lane Drainage Improvements, Manchester-by-the-Sea MA
- Town Drainage Improvements, Freedom NH
- Cooper Hill Road Improvements, Nottingham NH
- Ledge Farm Road Improvements, Nottingham NH
- Mountain Green South Pump Station Replacement, Concord NH
- Water and Sewer Improvements, Colebrook NH
- Water and Sewer Improvements, Northumberland NH
- Water Meter Replacements, Colebrook NH
- Water Meter Replacements, Bethlehem Village District NH
- Pine Street Pump Station Replacement, Manchester-by-the-Sea MA
- Portsmouth Athletic Fields, Portsmouth NH
- Sagamore Avenue Reconstruction, Portsmouth NH

EXPERTISE

- Structural Engineering
- Bridge Engineering
- Bridge Inspection
- Foundation Design
- Bridge Load Rating
- Resident Engineering

EDUCATION

- B.S., Civil Engineering (2014),
University of New Hampshire

PROFESSIONAL REGISTRATIONS/CERTS.

Professional Engineer:

- Maine

Certifications:

- MaineDOT LPA Certified
- NHDOT LPA Certified (1879)
- NHDOT OAOC Certified
- OSHA 10 (36-005326811)

EXPERIENCE

- Consulting 8 years

PROFESSIONAL AFFILIATIONS

- American Society of Civil Engineers

Mr. Adams is an experienced project engineer with 8 years of experience in the design and analysis of bridge structures. Since joining CMA Engineers, Inc., Mr. Adams has worked on projects throughout New England involving the inspection, load rating, and design of both rehabilitation and replacement bridge projects. His technical experience includes design of prestressed bridge beams, concrete substructures, precast boxes and rigid frames, and steel bridge members. As a project engineer he is regularly responsible for the preparation of conceptual plans and estimates, detailed design calculations, contract plans and documents, and construction forms and reports.

- Freshet Road Bridge, Madbury NH (LPA)
- Bear Rock Road Bridge, Colebrook NH (LPA)
- Sidewalk Connectivity Project, Littleton, NH (LPA)
- High Street, Campus Connector Trail & Memorial Dr. Project, Somersworth NH (LPA)
- NHDOT – Rehabilitation of US Route 3 over NHRR, Laconia NH
- Nute Road Bridge, Madbury NH (LPA)
- Nashua Heritage Rail Trail East, Nashua NH (LPA)
- Court and Linden Street Bridges, Exeter NH
- Ossipee Lake Road Culvert, Freedom, NH
- Cambridge Turnpike Improvement Project, Concord MA
- Maine DOT Bridge Engineering Services, Statewide ME
- Concrete Pedestrian Bridge Evaluation, Milford NH
- MaineDOT Parsons Road Slope Stabilization, Presque Isle ME
- MaineDOT Large Culvert Replacement, Patten ME
- MaineDOT Large Culvert Replacement, Smyrna ME
- MaineDOT Large Culvert Replacement, Oakfield ME
- Freedom Culvert, Freedom NH
- River Road Bridge, Ogunquit NH
- Drakes Island, Wells, ME
- New Durham Culverts, New Durham NH
- Prestressed Concrete Pedestrian Bridge Repairs, Manchester-by-the-Sea, MA



EDUCATION

- B.S., 1997 Wildlife Management University of New Hampshire
- M.S., 2000 Natural Resources: Wildlife Ecology University of New Hampshire

LICENSES & REGISTRATIONS

- New Hampshire Certified Wetland Scientist, CWS #281)
- Certified Erosion, Sediment and Stormwater Inspector, #388
- Surveyors and Civil Engineers

Tracy L. Tarr, CWS
Chief Executive Officer
GZA GeoEnvironmental, Inc.

Ms. Tarr is an environmental consultant that specializes in natural resources identification, assessment, permitting, and construction monitoring. She provides a variety of professional services including wetland delineation, wetland function-value assessment, protected species surveys, biomonitoring evaluations including electrofishing studies, vernal pool assessments, natural community mapping, wildlife habitat assessments, mitigation design, stormwater management, and environmental compliance monitoring. She routinely provides construction monitoring for large linear projects. Ms. Tarr serves as GZAs Northern New England Technical Practice Lead for the Ecology Group with a focus on wetland assessment, wildlife evaluation, and construction monitoring.

- **Wetland Scientist for the Whittier Bridge, I-95 Improvement Project, Newburyport, Amesbury, and Salisbury, MA**
- **Erosion Control Inspector for the Y170 Transmission Line and 386/386A/340 Distribution Line Project, Farmington, Milton, and Rochester, NH**
- **Erosion Control Inspector for the H137 Transmission Line, Bow, NH**
- **Erosion Control Monitor for the P145 Transmission Line, Concord, NH**
- **Project Manager, L176 Transmission Line Rebuild Project, Franklin, Tilton, Belmont, and Laconia, NH**
- **Project Manager, Q166 Transmission Line, Fitzwilliam and Troy, New NH**



EDUCATION

- B.S., 2015, Environmental Science; Ecosystems, University of New Hampshire
- M.S., 2017, Natural Resources, University of New Hampshire

REGISTRATIONS & CERTIFICATES

- CESSWI - 00005495
- OSHA 40-Hour HAZWOPER Certified

Conor Madison, CESSWI, CPESC
Environmental Scientist I
GZA GeoEnvironmental, Inc.

Mr. Madison is a member of GZA's Ecology Group as an Environmental Scientist I. Since joining in 2017 he has specialized in construction monitoring and reporting, natural resources identification, data collection, and environmental assessments. He provides a variety of professional services including natural resource mapping, protected species surveys, GIS mapping, and environmental compliance monitoring for utility construction and maintenance activities. He regularly manages and processes data and assists in all aspects of permitting at both a local and state level.

- **Environmental Scientist I, McCourt Construction and JCR Utility Construction, Seacoast Reliability Project (F107 Transmission Line), Newington and Durham, NH**
- **Environmental Scientist I, Eversource Energy, 391, 385, 373 Transmission Line Maintenance Project, Derry, Candia, Chester, Raymond, Deerfield, Northwood, Strafford and Rochester, NH**
- **Environmental Scientist I, Eversource Energy, M127 Transmission Line Maintenance Project, Sunapee, New London, Springfield, Andover, Wilmot and Franklin, NH**
- **Environmental Scientist I, Eversource Energy, L163 Transmission Line Maintenance Project, Keene, Sullivan, Stoddard, Nelson, Antrim, Hillsborough, NH**

EDUCATION

- B.A., Communications University of Maine

CERTIFICATIONS:

- S.W.COLE Trench and Shoring Safety
- NETTCP Soil & Aggregate Inspector
- NETTCP HMA Plan Technician
- ICRI Concrete Slab Moisture Testing Tech - Grade 1
- APNGA Portable Nuclear Gauge
- ICC Reinforced Concrete Special Inspector
- ICC Soils Special Inspector
- ICC Structural Masonry Special Inspector
- NETTCP Soils & Aggregate Inspector
- ACI Concrete Strength Testing Technician
- ACI Concrete Laboratory Testing Technician - Level 1
- ACI Concrete Field Testing Technician- Grade 1



Andrew A. Michaud
Construction Services, Manager and Office Manager
S.W. Cole Engineering, Inc

EXPERIENCE

Andrew joined S.W.Cole Engineering, Inc. in 1999 as a construction services technician with the firm in the field services and laboratory testing divisions. Andrew has since been promoted to Construction Services Manager and Office Manager at our Londonderry, NH location.

RESPONSIBILITIES

As a Construction Services Manager, Andrew is responsible for contract and business development, project management and assisting with testing services such as soil density, concrete, slab moisture, and performing special inspections and associated laboratory testing.

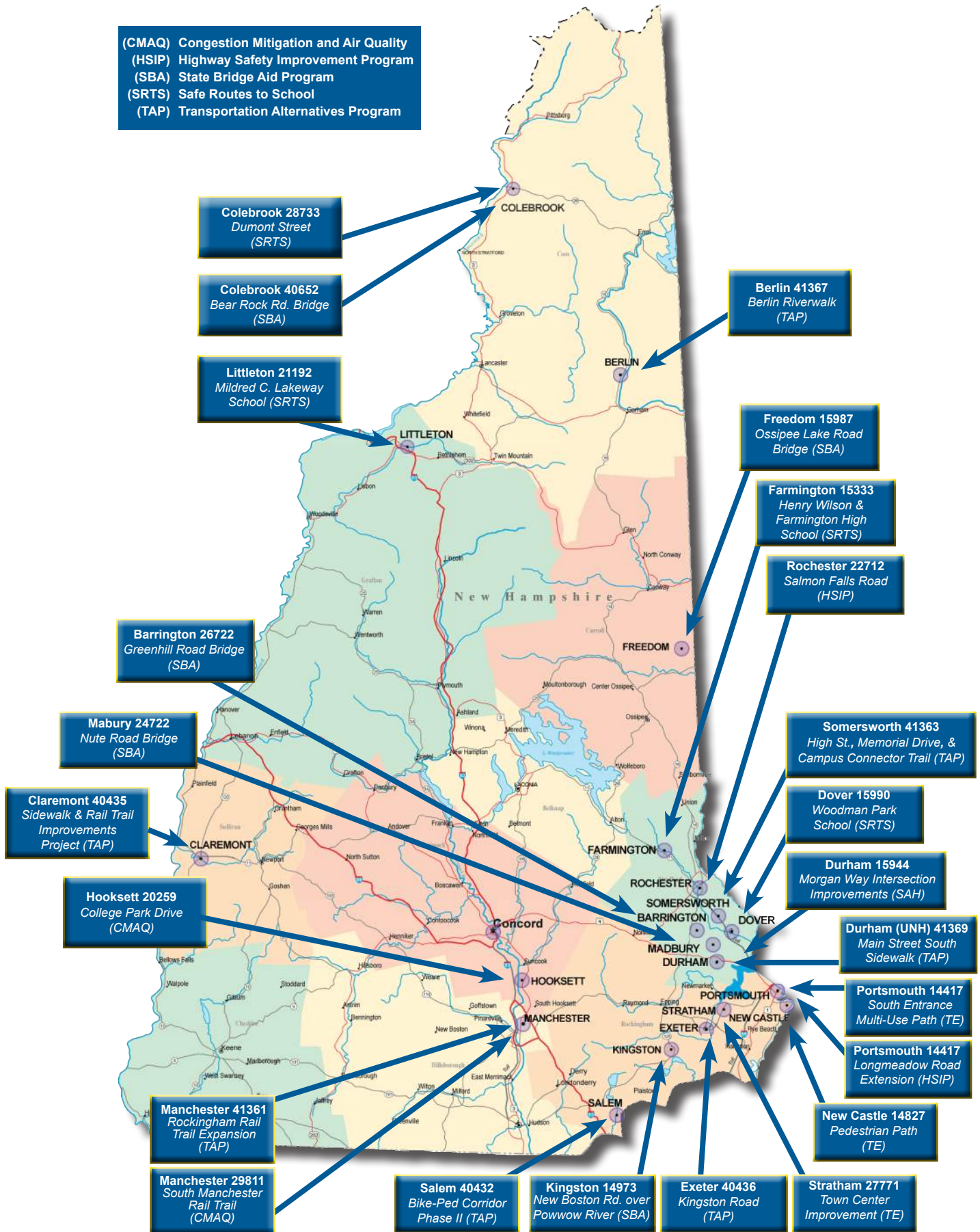
Appendix

Applicable Work Experience



NHDOT Locally Administered Construction Projects

(CMAQ) Congestion Mitigation and Air Quality
(HSIP) Highway Safety Improvement Program
(SBA) State Bridge Aid Program
(SRTS) Safe Routes to School
(TAP) Transportation Alternatives Program





South Manchester Rail Trail Project Manchester, NH

CMA Engineers was retained by the City of Manchester for construction oversight and contract administration of this Federally-Funded Congestion Mitigation and Air Quality Improvement (CMAQ) project for the 1 mile of a multi-use trail along the former Manchester-Lawrence rail corridor between Gold Street and Perimeter Road. This project will extend the South Manchester Rail Trail and complete an additional section to the Granite State Rail Trail. The project includes the rehabilitation of a 100+ year old wood trestle bridge.

Associated efforts involved design of ADA compliant bicycle and pedestrian facilities, coordination with the NHDOT, utility and abutter coordination, public involvement, completing the permitting/NEPA process, and conformance to the NHDOT Local Public Agency (LPA) requirements associated with the Federal funding. Final completion is anticipated in spring 2024.

Engineering Services:

NHDOT / CMAQ Project
Construction Administration
Resident Inspection Services

Period of Service:

2022 - Present

Key Personnel:

Philip Corbett, P.E.
Principal

Jason Beaudet, P.E.
Project Manager

Liam Kalloch, P.E.
Structural Resident Engineer

Jodie Bray Strickland, P.E.
Resident Engineer

Project Construction Cost:

\$3,013,000

Project Contact:

Owen Friend-Gray P.E.
Deputy Public Works Director
City of Manchester
(603) 792-5302



Greenhill Road Bridge Barrington, NH

CMA Engineers was retained by the Town of Barrington, NH for construction oversight and contract administration for the construction of a 100-ft span steel girder bridge with integral concrete abutments on Greenhill Road over the Isinglass River. The project is being completed through the State Bridge Aid program of the NHDOT.

Significant events during construction included rapidly responding to and determining a solution to remove pile obstructions located within the top 15 feet of the embankment. Additional tasks included scheduling of testing agencies, extensive utility coordination, review of bolted steel connections, abutter coordination, review of welded deck stud installations, and review of field conditions involving unanticipated high bedrock elevations.

Engineering Services:

NHDOT / SBA Project
Construction Administration
Resident Inspection Services

Period of Service:

2023 - Present

Key Personnel:

Phil Corbett, P.E.
Principal

Liam Kalloch, P.E.
Project Manager

Travis Adams, P.E.
Project Engineer

Project Construction Cost:

\$2,137,000

Project Contact:

Conner Maclver
Town Administrator
Town of Barrington
(603) 664-7395



Longmeadow Road Extension Project Portsmouth, NH

CMA Engineers provided the construction phase engineering services for this Highway Safety Improvement Program (HSIP) project. The project consisted of a 2800' extension of the existing Longmeadow Road in Portsmouth. The roadway will extend over to and intersect with Lang Road.

Significant elements of this project included the management of removal of former junk yard material, oversight of invasive species protocols, construction of a roadway on a new alignment, and creation of a rain garden. During the active construction of this project, CMA Engineers identified and oversaw the testing of unanticipated odorous soils to determine if they were hazardous. The design was modified to reuse the soils on sight and avoid extensive disposal costs.

The project was completed in the fall of 2022.

Engineering Services:
NHDOT / HSIP Project
Construction Administration
Resident Inspection Services

Period of Service:
2022

Key Personnel:
Philip Corbett P.E.
Principal

Sam Fortier, P.E.
Project Manager

Jodie Bray Strickland, PE
Resident Engineer

Project Construction Cost:
\$1,166,000

Project Contact:
David DeFosses
Project Manager
City of Portsmouth-DPW
(603) 766-1411



Berlin Riverwalk Along the Androscoggin River Berlin, NH

CMA Engineers is assisting the City of Berlin in administrating the construction contract and performing resident engineering services for the construction of a 3,200 linear feet 10-foot wide, paved multi-modal Riverwalk along the western bank of the Androscoggin River from Service Credit Union Heritage Park to just south of the Twelfth Street Bridge. The project is being completed under the Transportation Alternatives Program (TAP) of the New Hampshire Department of Transportation (NHDOT), and is dually funded by both FHWA and Northern Border Regional Commission (NBRC).

In addition to the riverwalk construction, the project included management of Limited Reuse Soil (LRS), oversight of invasive species protocols, implementation of an extensive planting design, installation of a pedestrian scale solar lighting system along the entire project, incorporation of user amenities (benches, bike racks, picnic tables, refuse receptacles), and significant place-making and historic preservation features, which included two scenic overlooks along the river, an accessible gateway to the pedestrian bridge, repurposing a paper mill turbine for industrial/cultural significant art, and recreation of a historic railroad feature from salvaged items of the former paper mill rail line that ran along the river in this location. The project reached substantially completion in the fall of 2022 with final completion in spring 2023.

Engineering Services:
NHDOT / TAP Project
Construction Administration
Resident Inspection Services

Period of Service:
2022 - 2023

Key Personnel:
Paul Schmidt, P.E.
Principal

Jason Beaudet, P.E.
Project Manager

Andy Hartford
Resident Project Representative

Project Construction Cost:
\$1,362,000

Project Contact:
Pamela Laflamme
Community Development Director
City of Berlin
(603) 752-8587



Rockingham Rail Trail TAP Project Manchester, NH

CMA Engineers was retained by the City of Manchester, New Hampshire to complete the design and construction administration of this Federally-Funded Transportation Alternatives Program (TAP) project. The project was for a pedestrian/bicycle trail along the abandoned railroad bed from Mammoth Road to Lake Shore Road. The trail project improved connectivity between the east side of the City and the Rockingham Trail.

Associated efforts involved design of ADA compliant bicycle and pedestrian facilities, coordination with the NHDOT, utility and abutter coordination, public involvement, completing the permitting/NEPA process, and conformance to the NHDOT Local Public Agency (LPA) requirements associated with the Federal funding.

Project construction was substantially complete in fall 2020 and final completion was completed spring 2021.

Engineering Services:

NHDOT / TAP Project
Engineering Study
Preliminary & Final Design
Bid Document Preparation
Construction Administration
Resident Inspection Services

Period of Service:

2018 - 2021

Key Personnel:

William A. Straub P.E.
Principal

Jason Beaudet, P.E.
Project Manager

Philip Corbett, P.E.
Project Review

Sam Fortier, P.E.
Project Engineer

Whitney Bouchard, P.E.
Permitting & Historical Research

Jodie Bray Strickland, P.E.
Resident Engineer

Project Construction Cost:

\$820,000

Project Contact:

Owen Friend-Gray P.E.
Deputy Public Works Director
City of Manchester
(603) 792-5302



Main Street South Sidewalk, University of New Hampshire Durham, NH

CMA Engineers was retained by the University of New Hampshire to complete the design and construction administration of this Federally Funded Transportation Alternative Program (TAP) project. The project involved installing approximately 925 feet of sidewalk along the south side of Main Street between the roundabout and the Fieldhouse main driveway. Sidewalk installation included minor shoulder rehabilitation, drainage modification, landscaping, fencing, pedestrian lighting, retaining walls, and ADA compliant ramps, sidewalks, and bus shelter. This project also involved historic/archeological coordination of a 19th century burial that concluded in positively identifying its location which had been unknown for more than 60 years. Administration of the contract was closely coordinated with resident services. Project construction was substantially completed in fall 2020 and finished in spring 2021.

Engineering Services:

NHDOT / TAP Project
Engineering Study
Preliminary Design
Final Design
Bid document preparation
Construction Administration
Resident Inspection Services

Period of Service:

2018 - 2021

Key Personnel:

William Straub, PE
Principal

Jason Beaudet, PE
Project Manager

Sam Fortier, P.E.
Project Engineer

Whitney Bouchard, PE.
*Permitting & Historical Research
Resident Project Representative*

Project Contact:

Daniel Rines
Project Manager
University of New Hampshire
(603) 862-1727



Salmon Falls Road Improvements HSIP Project Rochester, NH

CMA Engineers has assisted the City of Rochester in developing and completing a Federal Highway Safety Improvement Program (HSIP) project for sections of the Salmon Falls Road. Two separate curves have been documented to be high accident locations for run-off-the road collisions. The project was part of a corridor-wide improvements project.

Design included modifications to the two curves, including improvements to horizontal and vertical geometry, sight distance, shoulders and ditch lines, and guard rails. The project was constructed in early 2017. The HSIP program has been administered by NH DOT through the Local Project Administration (or LPA) program, and has met those program requirements.

Engineering Services:

NHDOT / HSIP Project
Preliminary and Final Design
Public Facilitation
Utility Coordination
Permitting/HSIP Funding
Bidding
Construction Administration
Resident Inspection Services

Period of Service:

2015 - 2017

Key Personnel:

William Straub, P.E.
Principal

Philip Corbett, P.E.
Project Manager

Jason Beaudet PE
Senior Project Engineer

John Kareckas, CET
Resident Project Representative

Project Construction Cost:

\$470,000

Project Contact:

Michael Bezanson, P.E.
City Engineer
City of Rochester
(603) 335-4352



Nute Road Bridge Madbury, NH

In 2012, CMA Engineers assisted the Town of Madbury with the design of emergency interim repairs for NHDOT Bridge No. 056/072 which carries Nute Road over the Bellamy River. CMA Engineers worked closely with NHDOT Bureau of Planning and Community Assistance on behalf of the Town after the structure was closed and barricaded when an NH DOT bridge inspection identified significant deterioration of the plate arch structure.

In 2018, the Town contracted CMA Engineers to conduct an engineering study for the replacement of the culvert with funding through the NHDOT State Aid Bridge Program. Through the engineering study, it was determined that the existing culvert should be replaced with a 33-foot single span bridge that included precast concrete beams supported on abutments with spread footings. In 2020, CMA Engineers completed final design, plans and specifications and construction was completed in 2021.

Engineering Services:

NHDOT / SBA Project
Hydraulic Analysis
Design
Bidding
Permitting
Construction Administration
Resident Inspection Service

Period of Service:

2012 - 2021

Key Personnel:

William Straub, P.E.
Principal

Liam Kalloch, P.E.
Project manager

Joshua Bouchard, P.E.
Project Engineer

Travis Adams, P.E.
Project Engineer

John Kareckas, CET
Resident Project Representative

Project Construction Cost:

\$750,000

Project Contact:

Eric Fiegenbaum
Town Administrator
Town of Madbury
(603) 742-5131



CMA
ENGINEERS

pursue excellence

PORTSMOUTH, NH | MANCHESTER, NH | PORTLAND, ME

www.cmaengineers.com