

TECHNICAL QUALIFICATIONS FOR:

Statewide On-Call Construction Engineering and Inspection Services Prequalified List of Consultants for Locally Administered Local Public Agency (LPA) Qualifications-Based Selection Contracts

January 18, 2024



GPI

TABLE OF CONTENTS

Introduction Letter	2
Project Understanding & Approach	3
Organizational Chart	5
Project Team	6
References	8
Appendix: Resumes	9
Appendix: Project Experience	13



Section 1

Introduction Letter

January 18, 2024

Tobey Reynolds, PE
Assistant Director of Project Development
Chairperson, Consultant Selection Committee
New Hampshire Department of Transportation
P.O. Box 483, 7 Hazen Drive
Concord, NH 03302-0483
Tobey.L.Reynolds@dot.nh.gov

Re: Statewide On-Call Construction Engineering and Inspection Services Prequalified List of Consultants for Locally Administered Local Public Agency (LPA) Qualifications-Based Selection Contracts

Dear Mr. Reynolds:

Greenman-Pedersen, Inc. (GPI) is pleased to present this prequalification package for construction services on LPA contracts. GPI has established long and successful relationships with the New Hampshire Department of Transportation (NHDOT) and local municipalities through numerous projects. We are enthusiastic about continuing this working relationship on future LPA projects. Our experienced and qualified staff of construction inspectors and engineers and our successful history of providing these services make GPI an ideal candidate for this contract.

Over the past two decades, GPI has been providing quality construction inspection services within the State of New Hampshire. We have delivered a full range of construction engineering and inspection services on various project types, including: bridge inspection, highway reconstruction, environmental inspection, pavement and roadway rehabilitation, drainage, schedule reviews, utility inspection, and contract administration.

GPI is currently providing these services to NHDOT and successfully pioneered the consultant construction engineering and inspection program with the department. We have a proven track record of offering experienced construction engineers and inspectors to numerous government and private clients for both project specific and on-call contracts. GPI has developed an intimate understanding of the NHDOT's construction standards, specifications, and requirements.

In addition to providing construction engineering and inspection to the NHDOT's Bureau of Construction, GPI has provided inspection services to various municipal and private projects throughout New England. We have managed and currently manage Local Public Agency (LPA) projects in New Hampshire, Maine and Vermont, including:

- Portland, ME: Congress Square Reconstruction - 2023
- Keene, NH: Winchester Street Reconstruction - 2024
- Lebanon, NH: Lahaye Drive Mixed Use Path - 2024

GPI retains a large percentage of our construction inspection staff each season due to our high standing in the industry and our reputation as a notable firm providing construction engineering and inspection services. This contributes to a high level of confidence in the consistency of our staff that clients appreciate each season.

We thank you for considering GPI for this pre-qualification and we look forward to continuing to provide quality construction engineering and inspection services within the State of New Hampshire. If you have any questions or wish to contact me, I can be reached by phone at 978-570-2964 or email at tletton@gpinet.com.

Best Regards,

GREENMAN-PEDERSEN, INC.



Timothy Letton, PE
Executive Vice President/New England Branch Manager
116 South River Road, Building B, Suite 1
Bedford, NH 03110



Section 2

Project Understanding & Approach

PROJECT UNDERSTANDING & APPROACH

WORKING WITH MUNICIPALITIES

Our Local Public Agency (LPA) project experience with various municipalities has shown GPI that these projects are unique and require careful stakeholder engagement. GPI approaches LPA projects with strict adherence to the New Hampshire Department of Transportation's (NHDOT) LPA manual and often assists the municipality and contractors in staying in compliance. Our attention to labor compliance requirements allows for efficient close-out and approval from the Federal Highway Administration (FHA) on many of these projects. GPI uses our expertise in construction and LPA training to ensure construction practices are meeting the NHDOT specifications and the process for contractor payment and changes are in compliance.



LABOR COMPLIANCE

GPI maintains close-out documents for LPA projects from day one of the project. This ensures all required records are available for labor compliance at any time and prepared for project completion.

GPI also performs and maintains contractor daily sign-in sheets, contractor-certified payroll, and labor compliance interviews during construction. All documents are collected and stored for NHDOT's review. A strictly controlled process ensures that federal requirements are being met, that the contractor qualifies for payment, and the municipalities qualify for their matching funds. Our experiences with project close-outs have been successful and positive for both the municipality as well as GPI's inspection staff.

Many GPI employees attend and maintain the NHDOT LPA certification, along with the labor compliance certification so our field staff can manage all aspects of a LPA construction project. Most of these inspectors have direct field experience on LPA projects. GPI is also a member firm of the NorthEast Transportation Training and Certification Program (NETTCP) and uses this program to train our staff. We continually require that our field staff keep certifications up-to-date and encourage them to acquire additional relevant certifications.

CONSTRUCTION INSPECTION

Along with successfully administering a project, GPI also excels in quality assurance (QA) inspection. GPI's New England inspection staff of approximately 30 people allows us to use a strong group to best suit the needs of individual projects. Our staff understands QA inspection and owner representation. Our inspectors track pay quantities and contractor quality, and record daily construction operations. The GPI inspection group is trained to be detail-oriented and proactive in working with contractors to provide the best quality project for the construction value. We work hard to earn the trust of the owners as we represent them on projects.

Under our current and previous construction engineering and inspection contracts with NHDOT, GPI has staffed numerous positions at various experience levels. GPI has worked diligently to match assignment needs with personnel qualifications. We have provided environment inspection as well as UAS and technology services to NHDOT and various technology and project control services for construction.



GPI fully understands the requirements to be included on the Statewide On-Call Construction Engineering and Inspection Services Prequalified List, as we are currently successfully providing these services to NHDOT and municipalities. Through our experience, GPI has proven an ability to respond rapidly to requests and provide qualified construction inspectors for all aspects of highway and bridge construction, assuring contractor compliance with the plans, specifications, and environmental commitments. The GPI New England offices are poised to continue providing these services to NHDOT locally and in a timely fashion.



Section 3

Organizational Chart

ORGANIZATIONAL CHART



PRINCIPAL-IN-CHARGE
Timothy Lemire, PE, LPA

PROJECT MANAGEMENT

PROJECT MANAGER
Ted Kitsis, PE, LPA

**ENVIRONMENTAL
INSPECTOR**

Brian Mousseau, EIT, LPA

**ENGINEERING
INSPECTORS**

Jasper Jenkins, EIT, LPA
Jon LeBrun, LPA
Justin Marr, EIT, LPA
Joshua Maxfield, PE
Christopher Stairs, PE, LPA
Ryan Kelloway, EIT, LPA

**TECHNICIAN
INSPECTORS**

Dennis Kelly
Thomas Kelly
Bobby Pontes, LPA
John Hunt
Al Johnson



Section 4
Project Team

PROJECT TEAM

COMPANY OVERVIEW

GPI Greenman-Pedersen, Inc. (GPI) is a multidiscipline engineering firm with 1,800 employees in over 60 offices nationwide working on transportation projects since 1966. Our local office in Bedford, New Hampshire, is currently home to 28 full-time professionals and continues to expand. GPI's Bedford office is part of our New England core, which includes offices in Portsmouth and Salem, New Hampshire and Wilmington and Boston, Massachusetts. These offices geographically complement one another and allow us to be responsive to all the New Hampshire Department of Transportation's (NHDOT) six district areas.

We have worked with multiple NHDOT bureaus on construction and coatings inspection assignments

and various on-call contracts for nearly two decades. Through this long-standing relationship, GPI has gained a reputation for being a responsive and trustworthy firm that works collaboratively to develop solutions.

The New England Division of GPI specializes in delivering quality services in construction engineering and inspection, materials testing, civil engineering, structural engineering, traffic engineering, highway engineering, transportation planning, intelligent transportation systems, survey, and right-of-way (ROW). We have many years of professional experience serving state, municipal, private, and industrial clients throughout New England, including on Local Public Agency (LPA) projects.

KEY PERSONNEL

The key personnel anticipated to work on these projects are highlighted below. More detailed resumes can be found in the Appendix.

MANAGEMENT TEAM

Timothy Lemire, PE, LPA - Principal-in-Charge: Extensive NHDOT experience for construction and painting inspection services. Served as resident engineer on LPA projects and an engineer inspector on **Newington-Dover 11238Q for NHDOT**. Experienced in major federal design-build heavy highway contracts and LPA projects in rural communities. **Holds current New Hampshire LPA certification.**

Ted Kitsis, PE, LPA - Project Manager: Senior engineer in the construction group. Prior to joining GPI, spent 38 years at NHDOT, most recently as Administrator of the Bureau of Construction. Construction engineer on the Winchester Street Reconstruction LPA project in Keene, NH. **Holds current New Hampshire LPA certification.**

ENGINEER INSPECTORS

Jasper Jenkins, EIT, LPA: Construction engineer on LPA and municipal projects. Currently assigned as the resident engineer in Portsmouth, NH. **Holds current New Hampshire LPA certification.**

Jon LeBrun, PE, LPA: Experienced resident engineer on LPA projects as well as other municipal and NHDOT projects. Has worked on construction projects for many New Hampshire municipalities. **Holds current New Hampshire LPA certification.**

Justin Marr, EIT, LPA: Resident engineer on the municipal Winchester Street Reconstruction LPA project. **Holds current New Hampshire LPA certification.**

Joshua Maxfield, PE: Construction engineer with experience in various construction inspection projects. Currently assigned to field inspection in the northern region of the VTrans construction program.

Christopher Stairs, PE, LPA: Construction manager and resident engineer on municipal roadway projects. Has worked both municipal design and construction phase services on many projects. **Holds current New Hampshire LPA certification.**

Ryan Kelloway, EIT, LPA: Engineer Inspector Level I with experience performing on-site bridge inspections with conditions reports and recommended repair inquiries. Served as construction inspector on the Winchester Street Reconstruction LPA project. **Holds current New Hampshire LPA certification.**

TECHNICIAN INSPECTORS

Dennis Kelly: Extensive NHDOT inspection experience from resurfacing to bridge replacement with a focus on New Hampshire highways. Technician Inspector Level III/Contract Administrator on a variety of projects in the District 5 area. 16 seasons working for NHDOT under GPI’s construction engineering and inspection contracts.

Thomas Kelly: Technician Inspector Level I on a variety of projects in the District 6 area. Seven seasons of experience working as an inspector for NHDOT in multiple construction districts.

Bobby Pontes, LPA: Has 14 years of construction experience with both state and municipal agencies. Currently working on NHDOT construction inspection projects primarily in District 5. **Holds current New Hampshire LPA certification.**

John Hunt: Over 27 years of experience in interstate highway and bridge construction. Served as resident inspector on several LAP (Maine LPA) projects in Maine.

Al Johnson: Over 25 years of experience in various phases of construction and infrastructure. Served as an inspector ifor various projects in the MaineDOT Highway Program .

ENVIRONMENTAL INSPECTOR

Brian Mousseau, EIT: Has 23 years of roadway construction inspection experiences, including projects involving drainage and E&S controls, allowing him to be effective in understanding Best Management Practices (BMPs) and controls. Many projects have included elaborate environmental controls and water treatment facilities. Currently a resident engineer in the MaineDOT Highway Program and holds a **New Hampshire LPA certification.**

Construction Engineering & Inspection Services in Support of LPA Projects		Years of Experience	Years with Firm	Technician Inspector - Level I	Technician Inspector - Level II	Technician Inspector - Level III	Engineer Inspector - Level I	Engineer Inspector - Level II	Engineer Inspector - Level III	Project Manager/Con. Eng. of Rec.	Environmental Engineer	NH Licensed PE	CESSWI Certified	CPESC Certified	NETTCP Certified	NH LPA Certified
Key Personnel	Project Role															
Timothy Lemire, PE	Principal-in-Charge	21	14							•		•			•	•
Ted Kitsis, PE	Project Manager/Construction Engineer of Record	39	1							•		•				•
Jasper Jenkins, EIT	Assistant Engineer	6	6				•							•	•	•
Jon LeBrun	Construction Inspector	52	14						•			•				•
Justin Marr, EIT	Assistant Engineer	7	3				•								•	•
Joshua Maxfield, PE	Engineer	12	10					•						•	•	
Christopher Stairs, PE	Resident Engineer	16	12						•							•
Ryan Kelloway, EIT	Construction Inspector	2	2				•								•	•
Dennis Kelly	Construction Inspector	16	14			•										
Thomas Kelly	Construction Inspector	11	7	•											•	•
Bobby Pontes	Construction Inspector	14	4		•											•
John Hunt	Resident Inspector	27	9						•					•	•	
Al Johnson	Construction Inspector	27	5		•											
Brian Mousseau, EIT	Resident Inspector	23	33								•			•	•	•



Section 5

References

REFERENCES

DEAN WILSON | Process Review Engineer

NHDOT Bureau of Construction
603-271-2573
dean.h.wilson@dot.nh.gov

ERIC SLOSEK | Director, Public Works

Town of Amherst, NH
603-673-2317
eslosek@amherstnh.gov

DON LUSSIER, PE | City Engineer

City of Keene, NH
603-352-6550
dlussier@keenenh.gov

TODD CROTEAU | Superintendent of Highways and Facilities

Town of Jaffrey, NH
603-532-6521
tcroteau@townofjaffrey.com





Section 6

Appendix:
Resumes & Applicable Work Experience

APPENDIX: RESUMES



Timothy Lemire, PE, LPA

Tim has over 17 years of experience in construction management, construction quality control/quality assurance and civil design. He has extensive NHDOT experience and brings significant project management and contract administrator expertise, including:

- Heavy/municipal roadway
- Bridge construction
- Site development
- Utility projects
- Building structures
- Forensic engineering
- Claim mitigation

Project Experience

Statewide Construction Engineering/Inspection Services, New Hampshire; 2017-Present. Project Manager. Providing construction engineering, construction inspection and related services to NHDOT on various construction projects throughout the state on an on-call basis. *Client: NHDOT*

Lafayette Road/Middle Street On-Street Bicycle Facilities, Portsmouth, NH; 2018. Construction Manager. LPA construction services for a buffered and protected bicycle lane project along Lafayette Road/Middle Street. The project goal was to provide a safe and usable route for bicyclists in concert with the city's complete streets policies and *Bicycle and Pedestrian Master Plan*. Responsibilities included resident engineering and inspection services, labor compliance conformance, submittal and RFI review, and project close-out. *Client: City of Portsmouth*

Pleasant Street Bridge Rehabilitation, Natick, MA; 2017-2018. Construction Manager. Managed construction activities for rehabilitation of the four-span, dry-laid stone masonry arch. Included pressure grout repairs under the water line of the Charles River and full-depth roadway rehabilitation of the historic structure. Responsibilities included resident engineering and protective coatings scheduling and supervision, monthly contractor pay requisition certification, submittal review/approval, change order development, RFI responses and project close-out. *Client: Town of Natick*

Slayton Hill Road Reconstruction, Lebanon, NH; 2014-2016. Resident Engineer. This \$5.2 million reconstruction project consisted of two mile of municipal roadway destroyed by flood events. Included full-depth reconstruction with upgraded drainage infrastructure and retaining wall structures. Responsibilities included construction quality assurance, daily material quantities, monthly invoice certification, and contract administration on behalf of the Owner. *Client: City of Lebanon*

Pedestrian Safety Improvements Phase II, Bennington, NH; 2016. Resident Engineer. This \$700,000 roadway LPA project involved involved one major intersection of full-depth reconstruction, as well as drainage upgrades and unique historical features. Responsibilities included construction quality control, daily material quantities, monthly invoice certification, payroll compliance verification, and contract administration on behalf of the owner. *Client: Town of Bennington*

PROPOSED PROJECT ASSIGNMENT

Principal-in-Charge/Engineer III

EDUCATION

BS/2006/Civil Engineering

REGISTRATIONS/CERTIFICATES

2014/Professional Engineer/NH #14566
 NHDOT LPA Labor Compliance Certification #1679
 NHDOT LPA Labor Compliance Certification
 OSHA Construction Safety 30-Hour Course #14-600540277
 ACI Concrete Field Testing Technician I

YEARS WITH FIRM: 14
TOTAL YEARS EXPERIENCE: 17

ADDITIONAL QUALIFICATIONS

2018/SSPC Thermal Spray Inspection
 2017/SSPC Bridge Coatings Inspector Level I
 2014/Army Corps of Engineers Construction
 Quality Management for Contractors

Theodore Kitsis, PE, LPA



Qualifications

Ted recently joined GPI as a senior engineer in the New England Construction Services Group. Prior to joining GPI, Ted spent 38 years of increasing responsibilities at NHDOT, most recently in the position of Administrator of the Bureau of Construction. His experience includes project and consultant design management, public/project presentations and workshops, and staff leadership and management.

- Registered Professional Engineer (1988/NH #7290)
- NHDOT LPA Labor Compliance Certification #2290

PROJECT ASSIGNMENT
Project Manager//Engineer III

EDUCATION
BS/1983/Civil Engineering

YEARS WITH FIRM: 1
TOTAL YEARS EXPERIENCE: 39

Project Experience

- **Winchester Street Reconstruction**, Keene, NH; 2022-Present.
Construction Engineer.
- **Mont Vernon Road Bridge**, Amherst, NH; 2023-Present.
Resident Engineer.
- **Nutting Road Bridge Rehabilitation**, Jaffrey, NH; 2023-Present.
Resident Engineer.
- **NH Route 28 Design & Construction**, Salem, NH; 2022-Present.
Construction Engineer.
- **Turnpike Street Reconstruction**, Stoughton, MA; 2022-2023.

Jon F. LeBrun, LPA



Qualifications

Jon has over 51 years of experience in highway and bridge design and construction services as well as drainage and wastewater projects. He is a former Deputy City Engineer in Nashua and was a project engineer for the City of Concord. Jon brings experience from the Construction Bureau of NHDOT.

- Registered Professional Engineer (1977/NH #04017 - expired)
- OSHA 10-Hour Training Course
- NHDOT LPA Labor Compliance Certification #1281

PROJECT ASSIGNMENT
Engineer III

EDUCATION
BS/1972/Civil Engineering

YEARS WITH FIRM: 13
TOTAL YEARS EXPERIENCE: 51

Project Experience

- **Rockingham Place Boulevard**, Salem, NH; 2019-Present.
Resident Engineer.
- **Intersection Improvements at Andrew Jarvis Drive and US Route 1**, Portsmouth, NH; 2018.
Resident Engineer.
- **Lafayette Road/Middle Street On-Street Bicycle Facilities**, Portsmouth, NH; 2018.
Resident Engineer.
- **Amherst Street Improvements**, Nashua, NH; 2016-2017.
Resident Engineer.

Christopher Stairs, PE, LPA



PROJECT ASSIGNMENT
Engineer III

EDUCATION
BS/2008/Civil Engineering

YEARS WITH FIRM: 12
TOTAL YEARS EXPERIENCE: 16

Qualifications

Over 16 years of design experience and has been involved with a wide variety of roadway projects such as municipal roadways, highways, and bike paths. He is primary responsibilities include project management, the design of vertical and horizontal roadway geometry, and drainage design.

- 2015/Professional Engineer/MA #52265
- NHDOT LPA Labor Compliance Certification #1953

Project Experience

- **Tuscan Village Redevelopment**, Salem, NH; 2019-Present.
Project Engineer.
- **Reconstruction of Maplewood Avenue**, Portsmouth, NH; 2015-Present.
Project Manager.
- **Route 97 Reconstruction**, Haverhill, MA; 2015-Present.
Project Manager.
- **Intersection Improvements at Andrew Jarvis Drive and US Route 1**, Portsmouth, NH; 2015-2018.
Project Manager.
- **Coburn Avenue Area Roadway Rehabilitation Project**, Framingham, MA; 2012-2017.
Project Engineer.

Jasper Jenkins, EIT, LPA



PROJECT ASSIGNMENT
Engineer I

EDUCATION
BS/2018/Civil Engineering

YEARS WITH FIRM: 5
TOTAL YEARS EXPERIENCE: 5

Qualifications

Training as a field inspector through NHDOT Construction Bureau's Intern program. Experienced in the NHDOT's CMS database as well as standard specifications and plans.

- NETTCP Hot Mix Asphalt Paving Inspector.
- 2018/Engineer-in-Training/NH #7004
- NHDOT LPA Labor Compliance Certification #1951
- OSHA Construction Safety 10-Hour
- ACI Concrete Field Testing Technician Grade 1

Project Experience

- **Reconstruction of Maplewood Avenue**, Portsmouth, NH; 2018-2021.
Construction Engineer.
- **Intersection Improvements at Andrew Jarvis Drive and US Route 1**, Portsmouth, NH; 2018.
Construction Engineer.
- **Lafayette Road/Middle Street On-Street Bicycle Facilities**, Portsmouth, NH; 2018.
Construction Engineer.

Brian Mousseau, EIT, LPA



Qualifications

Over 23 years of experience in project management and inspection services. MaineDOT LPA. NETTCP Hot Mix Asphalt Paving Inspector.

- 2001/Engineer-in-Training/ME #5089
- NHDOT LPA
- 10-Hour OHSA
- ACI Concrete Field Testing Tech Grade 1

Project Experience

- **Bristol Road Sidewalk Project**, Damariscotta, ME; 2020. Project Manager/Class IV Resident.
- **MaineDOT Highway Program Project No. 22164**, Portland, ME. Class IV Resident.
- **MaineDOT Highway Program Project No. 24037**, Portland, ME. Class IV Resident.
- **MaineDOT Highway Program Project No. 22476**, Windham-Naples, ME. Class IV Resident.

PROJECT ASSIGNMENT
Environmental Inspector

EDUCATION
BS/2001/Construction Management
Technology

YEARS WITH FIRM: 4
TOTAL YEARS EXPERIENCE: 23

Dennis Kelly



Qualifications

Over 14 years of field experience from district-wide resurfacing projects to multi-million dollar interstate bridge replacements. Performed plant inspections of concrete and asphalt. Extensive experience with NHDOT.

- NETTCP Quality Assurance Technologist #999
- NETTCP Hot Mix Asphalt Paving Inspector #2436
- NETTCP Hot Mix Asphalt Plant Technician #877m
- NETTCP Soils and Aggregate Inspector #897
- NETTCP Concrete Technician #1140
- NETTCP Concrete Inspector #1663
- NETTCP Drilled Shaft Inspector #626
- NETTCP Driven Pile Inspector #508
- OSHA 10-Hour Training Course

Project Experience

- **NHDOT Project No. 42325 District 5 PMRAP**, 2019-Present. Contract Administrator.
- **NHDOT Project No. 41485**, Merrimack-Nashua-Concord, 2019. Contract Administrator.
- **NHDOT Project No. 16165F & 16165G, District 5 Resurfacing**; 2017-2018. CE&I Technician Inspector, Level III - Contract Administrator.
- **NHDOT Project No. 41097**, Manchester-Merrimack; 2018. CE&I Technician Inspector, Level III - Contract Administrator.

PROJECT ASSIGNMENT
Technical Inspector III

EDUCATION
AS/2007/Civil Engineering

YEARS WITH FIRM: 14
TOTAL YEARS EXPERIENCE: 16

APPENDIX: PROJECT EXPERIENCE

CE&I - Roadway Projects

NHDOT On-Call Construction Engineering & Inspection

Statewide, New Hampshire



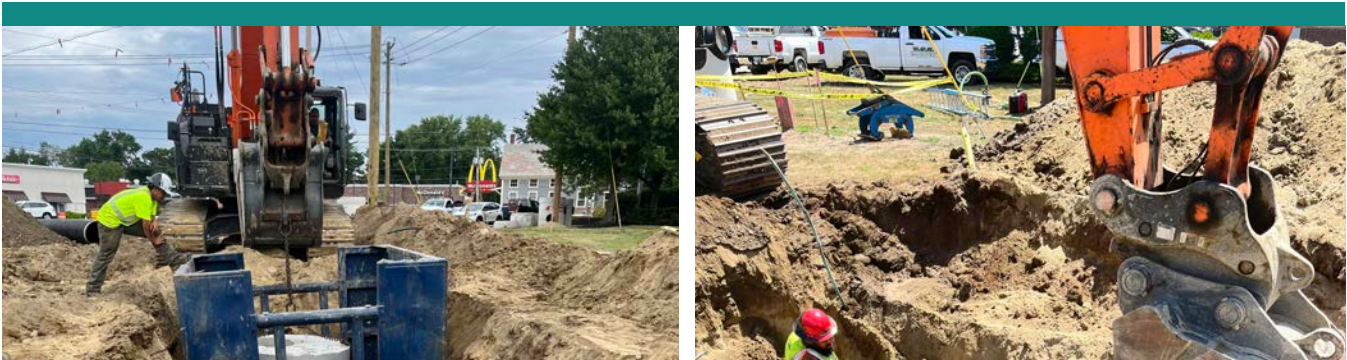
Since 2009, GPI has been providing qualified personnel for construction engineering and inspection for highway and bridge construction projects to augment the NHDOT staff and is the only consultant who has fully staffed a project with the contract administrator as well as a full staff of qualified inspectors. GPI personnel perform inspection, documentation, testing, and other construction engineering activities throughout the various stages of the project, including, but not limited to, the following areas: production, hauling, and placement of highway materials, soil or rock excavations and soil or rock fill construction, roadway base, sub-base, and slope construction, drainage work, utility construction for sewer, water, electricity, and gas, erosion and sediment control best management practices, construction of traffic signs, traffic pavement markings and symbols, and traffic signal installations, bridge and building demolition, paving, resurfacing, pavement repair, and rehabilitation, guardrail, fence, and other linear barriers, land clearing and landscaping, and bridge substructure and non-bridge structure.

Client: NHDOT

Contact: Dean Wilson, Process Review Engineer, 603-271-2731, dwilson@dot.state.nh.us

Winchester Street Reconstruction & Island Street Bridge Replacement

Keene, New Hampshire



GPI is providing full-time resident engineer and construction inspector services for this roadway and bridge reconstruction project. This LPA project for Winchester Street includes full-depth reclaim and road box construction with full drainage and utility upgrades. The bridge replacement includes removal of a temporary structure and replacement with a two-lane 115-foot span integral abutment steel bridge over the Ashuelot River. As an LPA project, all project documentation is being tracked and turned over to NHDOT upon completion of work. Responsibilities include tracking various pay accounts on monthly pay estimates, quantity tracking, change order negotiation, and construction coordination.

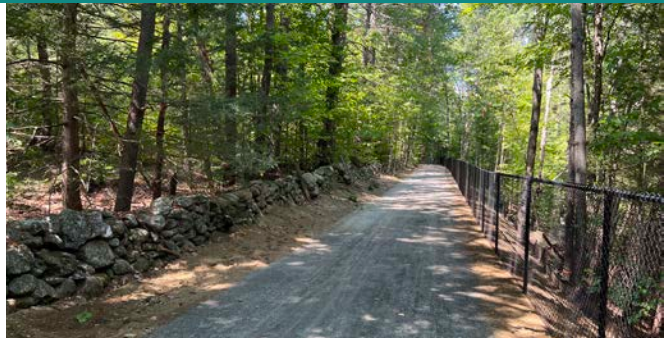
Client: City of Keene

Contact: Donald Lussier, PE, City Engineer, 603-757-0682, dlussier@ci.keene.nh.us

CE&I - Safety Improvement Projects

Cheshire Rail Trail

Keene, New Hampshire



GPI is providing **construction engineering and inspection services** for the Cheshire Rail Trail III Loop project in Keene, NH. The goal of this **Local Public Agency (LPA) project** is to **create safe access** for neighborhoods in West Keene to the rail trail, establish a bicycle and pedestrian loop facility, and improve access to the downtown area. The project involves constructing a proper ten-foot-wide full-depth trail between Hurricane Road, as well as roadway drainage and grading improvements, pavement markings, and other safety improvements.

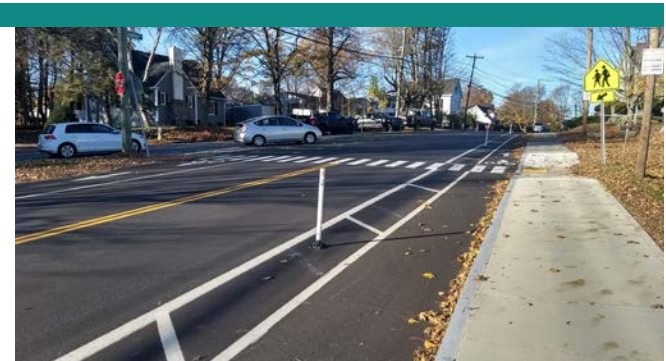
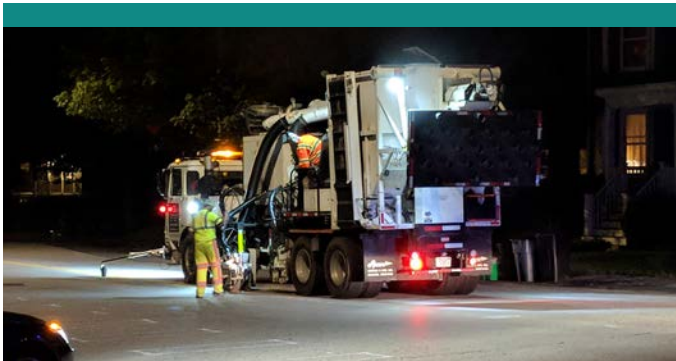
GPI is providing a full-time resident engineer and quality assurance services during the construction of the project. The inspection work includes field inspection, daily and weekly reporting to stakeholders, daily quantity tracking, receiving LPA labor compliance and subcontractor approval documents, preparation of monthly pay estimates to contractor, traffic control and site safety monitoring, control of materials and coordination of materials testing subconsultant, and red line as-builts.

Client: City of Keene

Contact: Brett Rusnock, PE, Civil Engineer, 603-352-6550, brusnock@keenenh.gov

Lafayette Road/Middle Street Bicycle Lanes

Portsmouth, New Hampshire



GPI provided the engineering study, preliminary and final design, bidding assistance, and **construction engineering and inspection services** in support of the creation of buffered and protected bicycle lanes along Lafayette Road/Middle Street (0.9 miles), an arterial road connecting to the downtown that serves many public facilities including three schools. The goal of this LPA project was to provide a safe and usable route for bicyclists of all ages in concert with the city's complete streets policies and bicycle and pedestrian master plan. Upon completion of the design, GPI oversaw the installation of the buffered and protected bicycle lanes and other improvements consisting of pavement markings, flexible delineator posts, upgrades to video detection traffic signal equipment, green bicycle boxes, adjustment of drainage structures, reorganization of on-street parking, pedestrian actuated crossing assemblies, and new ADA-compliant curb ramps. This project represents the first implementation of protected bicycle lanes in the state.

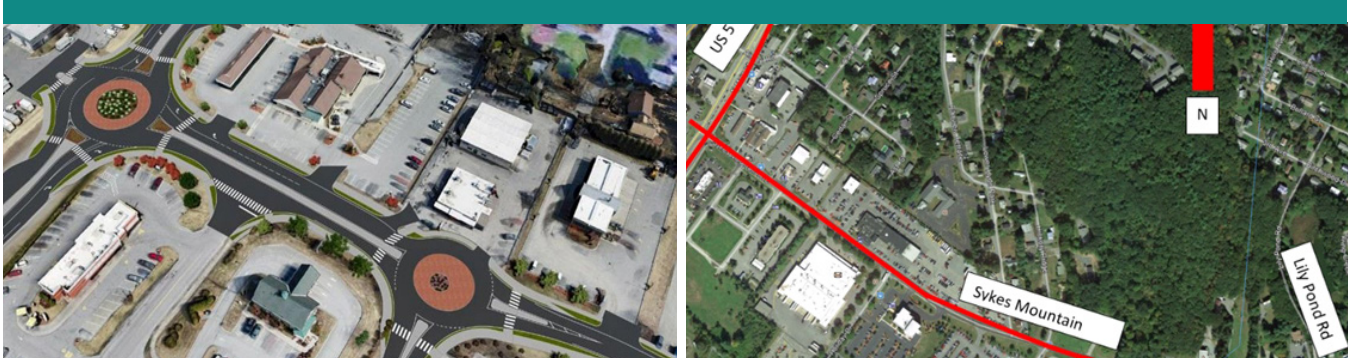
Client: City of Portsmouth

Contact: Eric Eby, PE, City Engineer, City of Portsmouth DPW, 603-766-1415, ebeby@cityofportsmouth.com

CE&I - Intersections/Sidewalks Projects

Roundabout Installations

Hartford, Vermont



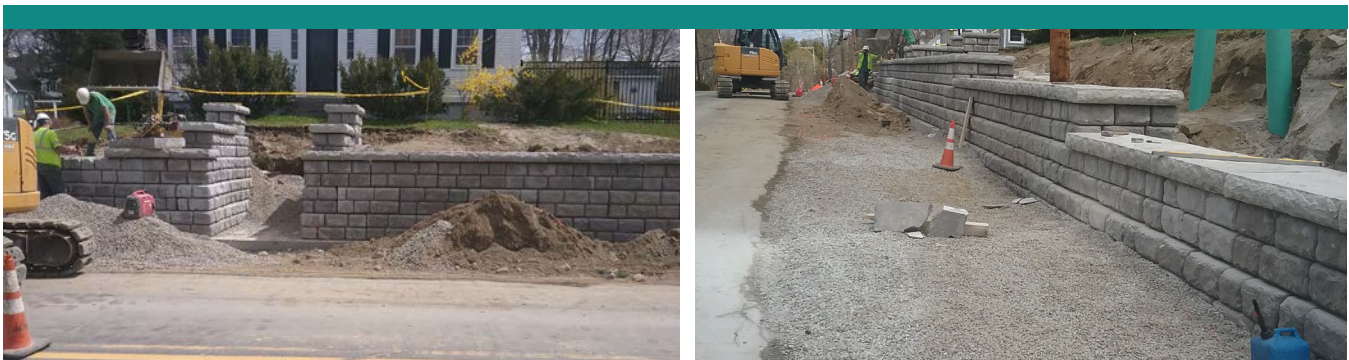
This Municipal Assistance Bureau (MAB - Vermont equivalent of LPA) project involves the installation of two single-lane roundabouts and approaches in Hartford, Vermont to improve safety for motorists, bicyclists, and pedestrians. One roundabout is located at the junction of US Route 5 and Sykes Mountain Avenue. The second roundabout is at the junction of Sykes Mountain Avenue and Ralph Lehman Road. The project also includes the removal and replacement of the curb and new drainage. Construction of this project is being done in conjunction with the Hartford sidewalk project. GPI is responsible for **construction administration and inspection** ensuring this project is constructed according to contract documents and that all materials are in conformance with the specifications. GPI also ensures all safety and environmental regulations are adhered to.

Client: Town of Hartford

Contact: Hannah Tyler, Director of Public Works, 802-369-9269, htyler@hartford-vt.org

Bristol Road Sidewalk Reconstruction

Damariscotta, Maine



GPI provided **construction inspection services** for the Bristol Road sidewalk project in the Town of Damariscotta, Maine. This Locally Administered Project (LAP - Maine equivalent of LPA) involved the construction of a new sidewalk with drainage and safety improvements along Bristol Road beginning 200 feet south of Main Street and extending south approximately 2,000 feet to Miles Street.

Client: Town of Damariscotta

Contact: Matt Lutkus, Town Manager, 207-563-5168, mlutkus@damariscottame.com

CE&I - Bridges/Culverts Projects

Pleasant Street Bridge Rehabilitation

Natick, Massachusetts



GPI provided engineering design and **resident engineering and inspection services** for the rehabilitation of this four-span, dry-laid masonry arch carrying Pleasant Street over the Charles River in Natick, MA. Each span is 25 feet long. The project issues involved the load-carrying capacity, spandrel wall deflection, leaking utilities, substandard railing, approach roadway settlement, and inadequate pedestrian sidewalks. The location and nature of the bridge required historic-sensitive solutions. Localized grouting of the arch was required to stabilize it in areas where undermining and shifting of the arch stones had occurred. The project also included full-depth roadway reconstruction with drainage/water/sewer upgrades. Use of a soil hardener was used to help reduce the porosity of the fill over the arches. The bridge was repaved to further protect the arches.

Client: Town of Natick

Contact: Jeremy Marsette, PE, DPW Director, 508-647-6550, jmarsette@natickma.org

Wood Street Bridge Replacement

Swansea, Massachusetts



GPI assisted the Town of Swansea in obtaining funding from FEMA for the replacement of the bridge that carries Wood Street over the Cole River, saving the town approximately \$400,000. The corrugated steel arch was damaged in the spring 2010 floods to the extent that complete replacement was required. GPI completed the design and permitting for this project and **actively supervised construction**. The replacement bridge consists of an 18-foot clear-span, three-sided precast concrete frame founded on spread footings. The bridge is oriented on a 20-degree skew to the Cole River and was designed to match the existing corrugate arch hydraulic opening. Precast concrete retaining walls were incorporated into the design to speed the construction. The design was developed considering wetland replications and the need to maintain flow in the river. A diversion channel was detailed to allow for complete flow and for construction in the dry. Wetland resources disturbed were replicated on site.

Client: Town of Swansea

Contact: James Kern, Town Administrator, 508-678-2981, jkern@town.swansea.ma.us

CE&I - Traffic Engineering Projects

Mall Road and Rockingham Park Boulevard Improvements

Salem, New Hampshire



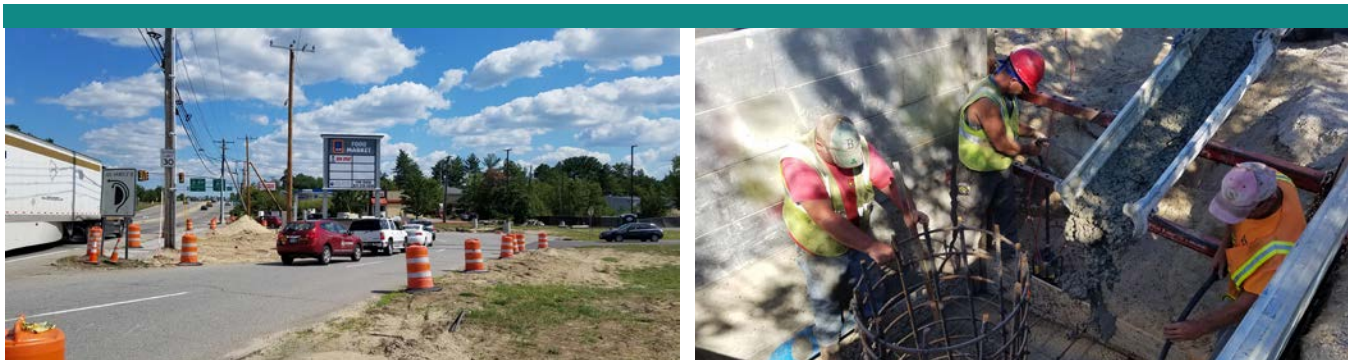
GPI is providing **resident engineering and inspection services** for two separate contracts in Salem, NH, as part of the Tuscan Village development. The projects are privately funded but overseen by the Town of Salem and the New Hampshire Department of Transportation (NHDOT). GPI is providing **construction inspection and coordination of all contractor activities to ensure NHDOT specifications are achieved for construction.** Work includes construction of additional turn lanes, drainage and signalized intersection upgrades, and decorative roadway lighting systems.

Client: OMJ Realty, LLC

Contact: Gino Baroni, Owner & Managing Principal, Trident Project Advisors & Development Group, 603-898-6110

Amherst Street Improvements

Nashua, New Hampshire



GPI prepared plans and special provisions, as well as resident engineering, for improvements along Amherst Street (NH Route 101A) and Charron Avenue in Nashua, NH. Work included widening the roadway to accommodate additional turn lanes at signalized intersections, relocating the raised median, reconstructing and overlaying Amherst Street, reconstruction of sidewalks and associated curbing, relocation of utility poles, drainage, improvements, and pavement markings. The project also included the elimination of the eastbound jug handle to provide a traditional four-way signalized intersection. This included widening Amherst Street to accommodate an exclusive left-turn lane, redesigning the existing traffic signal, reconstructing sidewalks, installing new traffic signal equipment, and relocating utility poles. Additional components involved survey, right-of-way, alteration and easement plans, drainage system improvements, traffic signal design, and **full-time construction inspection and administration.**

Client: Town of Damariscotta

Contact: Matt Lutkus, Town Manager, 207-563-5168, mlutkus@damariscottame.com

GPI

Greenman-Pedersen, Inc.

116 South River Road

Building B, Suite 1

Bedford, NH 03110

603-766-8257



www.gpinet.com