



Statewide On-Call Construction Engineering and Inspection Services Prequalified List of Consultants for Locally Administered Local Public Agency (LPA) Qualifications-Based Selection Contracts





Transmitted via e-mail.

January 26, 2024

C.R. Willeke, P.E.
Municipal Highways Engineer
NH Department of Transportation

Re: Revised Prequalification Package for Statewide On-Call Construction Engineering & Inspection Services Prequalified List of Consultants for Locally Administered Local Public Agency (LPA) QBS Contracts

Dear Mr. Willeke:

McFarland-Johnson (MJ) is pleased to submit this revised Prequalification Package to be included on the Statewide On-Call Construction Engineering & Inspection (CE&I) Services Prequalified List of Consultants for Locally Administered Local Public Agency (LPA) QBS Contracts. We have the qualifications and experience to assist municipalities with the successful completion of LPA construction projects.

Throughout this revised Prequalification Package, we have outlined our staff expertise, relevant project experience, and approach to delivering quality LPA construction projects for municipalities throughout New Hampshire. We feel that the most important qualities MJ provides municipalities to safely and efficiently complete construction projects are:

- Experienced Team – *MJ has a deep construction engineering and inspection team that works efficiently to maintain schedules and deliver quality construction projects.*
- Superior Record Keeping – *MJ has a history of developing outstanding construction records which will ensure construction of quality projects without funding or reimbursement issues.*
- Commitment to Compliance – *MJ has a strong commitment to ensuring compliance of project materials, regulatory permits, and labor requirements.*

Our Team has been working on construction engineering and inspection projects for decades, completing a wide variety of roadway, bridge, and active transportation projects. We look forward to the opportunity to partner with municipalities throughout New Hampshire to improve our local infrastructure network. As always, our employee owners join me in thanking you for your consideration of the McFarland Johnson Team.

Sincerely,

Thomas T. Kendrick, P.E.
Director of Transportation Services

Table of Contents

SECTION	1	Project Understanding and Approach
SECTION	2	Organizational Chart
SECTION	3	Project Team
SECTION	4	References
APPENDIX	A	Key Staff Resumes
APPENDIX	B	Project Profiles



Sewalls Falls Bridge Construction, Concord

Project Understanding and Approach

McFarland Johnson (MJ) is pleased to submit our qualifications to provide Statewide On-Call Construction Engineering and Inspection services for locally administered LPA projects. The MJ Team is uniquely positioned to provide quality construction inspection staff for any assignment at any location in New Hampshire. MJ's Concord and Portsmouth offices are comprised of 50 employee-owners which represents one of the of the largest Teams of transportation engineering professionals in New Hampshire. Our staff depth and office locations allow MJ to provide qualified CE&I staff to municipalities throughout the state.

MJ has been providing design and construction inspection services to municipalities throughout New Hampshire for decades. Our construction services group has a large staff of experienced and qualified Inspectors with a diverse list of successfully completed projects. We understand that municipalities need experienced construction engineering and inspection staff to ensure that quality projects are constructed in accordance with the Contract Documents and the NHDOT Standard Specifications for Road and Bridge Construction. Our approach is to provide municipalities with professional construction engineers and local on-site inspection staff who are committed to quality completion of each project on time and on budget. The sections below outline the critical aspects of CE&I for LPA projects and MJ's approach to delivering successful LPA construction projects.

Construction Engineering

MJ's highway and bridge design professionals are always available to provide engineering consultation and advice through all phases of construction. Our office staff understands the importance of quickly responding to calls and questions from inspection staff and the Contractor to avoid costly construction delays. Unanticipated site conditions often require quick decision-making and engineering design support to maintain timely project progression. MJ's design engineers are committed to supporting our inspection staff to develop design solutions to resolve construction issues if they arise. In addition, MJ's office staff prioritizes efficient and thorough review of shop drawings and Contractor submittals to facilitate efficient order & delivery of project components and materials to the jobsite.

Record Keeping

MJ's Inspectors have a thorough understanding of NHDOT's and FHWA's record keeping requirements and take pride in maintaining strict quality project records. Providing clear and thorough construction records is paramount to minimizing the risk of Contractor claims, schedule delays, and funding reimbursement issues.

MJ has a strong track record of developing quality construction records and we have undergone several FHWA audits of our project records on previous projects with resounding success.



Sugar River Pedestrian Bridge, Claremont

Maintenance & Protection of Traffic

MJ's Inspection staff are experienced on many types of construction projects. Inspectors will ensure that all necessary traffic control measures are installed in accordance with the MUTCD, NHDOT Standards, and with project plans to minimize interruptions to the traveling public. Inspectors are tasked with daily reviews of the traffic control devices to ensure the configuration meets standards and are maintained in a clean and serviceable condition.

Certifications & Training

MJ has a diverse staff with experience on a variety of bridge and highway construction projects. Our Team collectively contains Licensed Engineers, as well as Inspectors certified by NICET, NETTCP, Erosion Control, and OSHA for various specialized inspection services for a wide variety of construction activities, all of whom are certified through the NHDOT LPA Program. MJ routinely holds in-house training as well as attending other formal training to keep up to date on the latest advancements in processes, materials, and regulatory requirements of our industry.

Material Approval & Certifications

MJ's Construction Inspection staff is experienced with all types of construction materials, including asphalt, concrete, steel, and earthwork. MJ utilizes experienced, trained, and appropriately certified technicians to perform field and laboratory testing of materials to be incorporated into your project. MJ's inspectors and engineers will ensure all materials are sampled, tested, and documented with all required certifications to ensure only acceptable and quality materials meeting NHDOT specifications are used.

Regulatory Permit Compliance

MJ has a team dedicated to the review, application, and implementation of permits including environmental, erosion and sediment control (SWPPP), Nationwide, Army Corps of Engineers, and others. MJ's inspection staff will ensure environmental commitments are being adhered to by the contractor during all phases of construction.

Federal Labor Compliance

MJ's staff are experienced with Federal Labor Compliance requirements and have completed numerous payroll reviews, DBE Commercially Useful Function (CUF) reviews, and Labor Standards Interviews. Staff will review the Contractor's documentation to check that all federal requirements are met and adhered to by the contractor such as that prevailing wages and benefits are paid, that the contractor implements and adheres to EEO non-discrimination and meets DBE goals. Our inspection staff has developed a unique method of cataloging daily sign-in sheets with Certified Payrolls to make reviews by the Office of Federal Compliance much easier. If Contractor non-compliance issues arise, MJ's Project Manager will notify the municipality and the Contractor in writing and require an action plan and timeline from the Contractor to bring the project into compliance.

Specialized Inspection Experience

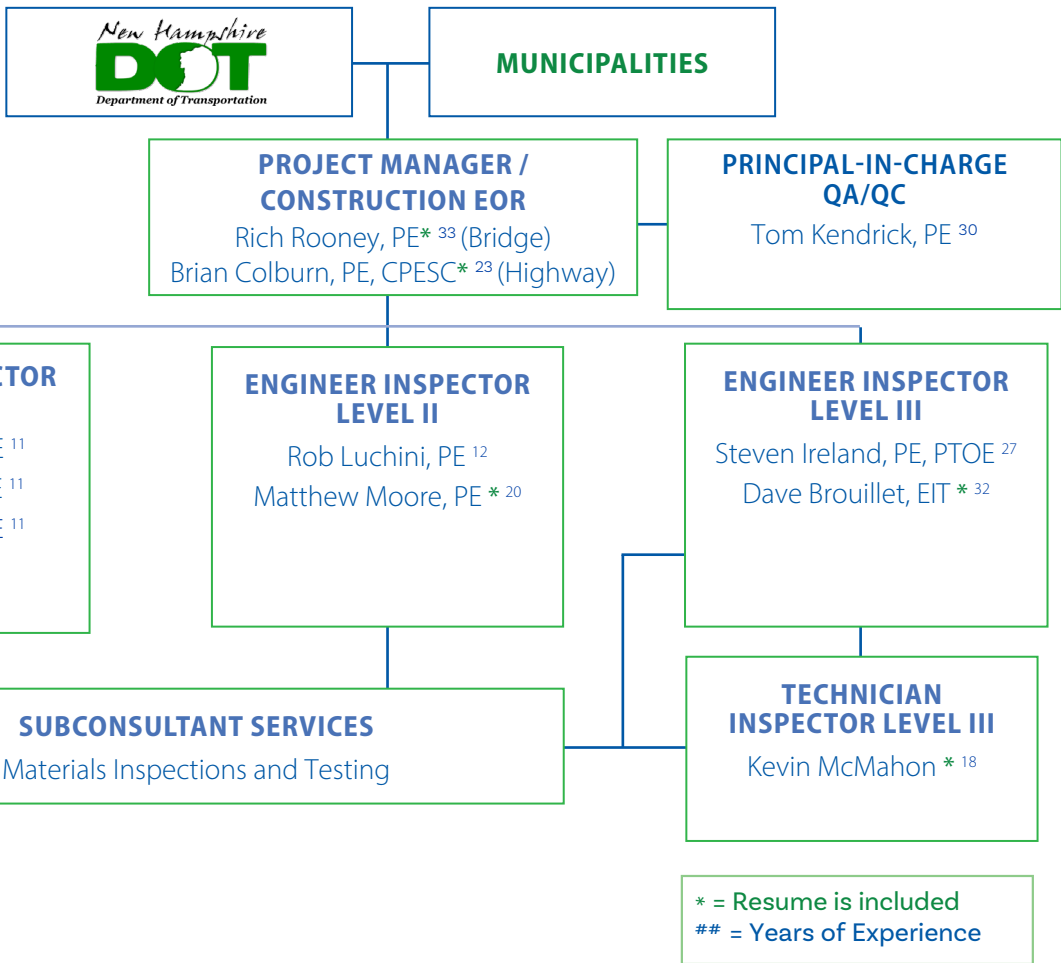
The LPA program has several funding sources which can result in varying levels of complexity during construction. The table at right summarizes MJ's specialized CE&I experience on locally administered projects. MJ's approach is to provide municipalities with experienced inspection staff to oversee all types and levels of construction complexity to aid in the successful completion of projects.

Specialized Experience on Local Projects

- Roundabouts
- Traffic Signal Upgrades/
Replacements
- Park and Rides
- Bridge Preservation
- ABC Bridge Construction
- Historic Truss Rehabilitation
- Drilled Shaft & Micropile
Foundations
- Pedestrian Bridges
- Complete Streets & Downtown
Revitalization
- Pedestrian Improvements
& ADA Compliance
- Bridge Painting



Court Street Rehabilitation, Laconia



Rich Rooney, PE
Project Manager



Brian Colburn, PE, CPESC
Project Manager



Tom Kendrick, PE
Principal-in-Charge, QA/QC

Our qualified team of engineers and staff have experience working on many LPA projects with municipalities and state agencies throughout New Hampshire.



Steve Ireland, PE, PTOE



Dave Brouillet, EIT



Rob Luchini, PE



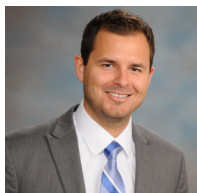
Matt Moore, PE



Sam White, PE



Brian Patinskas, PE



Dan White, PE



Dhruv Patel



Kevin McMahon



Downtown Transportation Improvements Project, Franklin

Project Team

The LPA program requires a consultant to know and understand the processes and procedures needed to bring a project to a successful conclusion, including during the construction phase. The McFarland Johnson Team has completed many projects under the LPA program, including one of the largest projects ever completed under the program, the Sewalls Falls Bridge over the Merrimack River in Concord. Many of the Team members shown below were involved in that project through its completion. A large project, like the Sewalls Falls Bridge, requires multiple inspectors to monitor the contractors' efforts and MJ adjusted the staffing level as necessary throughout the construction phase. On smaller LPA projects, one full-time inspector can typically manage construction inspection and the required record keeping.

The staff members discussed below are available on an as needed basis and will be chosen based on the size and complexity of the assignment. To lead our Team and assign the appropriate staff for each assignment we have selected **Rich Rooney, PE**. Rich started his career with the New Hampshire Department of Transportation 33 years ago. He came to MJ in 2004 and has managed the design and construction of many highway and bridge projects for both municipalities and state agencies. Rich has managed many of MJ's construction inspection activities for DOT and Local Projects. Currently, Rich leads our bridge design and construction observation work in New England. He has



Kelley Street Bridge Deck
Construction, Manchester

successfully completed projects in communities like Jaffrey, Derry, Manchester, Merrimack, Claremont, Raymond, Alton, and Hebron. His construction background coupled with his design experience makes him the perfect choice to lead our CE&I Team on any LPA project.

To assist Rich in managing construction activities we have included **Brian Colburn, PE**. Brian's background in highway design and construction complements Rich's bridge background, providing our Team with strong management capabilities no matter what type of LPA project is required. Brian has more than 23 years of experience and has been involved in many municipally-managed projects, serving as construction inspector, designer, and manager. His inspection background includes projects in Salem, Claremont, Concord, Franklin, Goffstown, Warner, and Rochester and he has managed projects in all those communities and others in New Hampshire. Brian currently leads our highway design group in Concord, and mentors our junior staff as they gain experience in the field and the office.

As the **Principal-in-Charge for these LPA projects, Tom Kendrick, PE** will see that all necessary and appropriate resources are made available to each municipality on each assignment. Tom's background includes several LPA and State Aid bridge projects, so he knows and understands the needs and goals of the towns and cities here in New Hampshire.

The individuals who will provide the "eyes and ears" in the field, observing the contractors' activities on these LPA projects, include a core group of experienced staff members that have many years of experience on municipal and state projects. Our most senior staff members include **Steve Ireland, PE, PTOE; Kevin McMahon; Matt Moore, PE; and Dave Brouillet, EIT**.

Steve Ireland's experience includes more than eight years with NHDOT's Construction Bureau, serving as the resident engineer on several bridge projects as well as many paving and drainage projects in eastern New Hampshire. Since joining MJ in 2014, Steve has continued to monitor construction activities, including the Replacement of the Sewalls Falls Bridge in Concord and the NH 103 Roundabout Construction in Warner. He recently served as the resident engineer on our LPA project to replace the bridge on Bow Lake Road in his hometown of Northwood.

Kevin McMahon joined MJ in 2018 after many years working for NHDAS and NHDOT. His 18 years of construction inspection experience includes many highway and bridge projects such as the Manchester Airport Access Road, FE Everett Turnpike Open Road Tolling in Hooksett, and the Replacement of the Bridge at Exit 4 on I-293. He is currently overseeing an LPA project on NH 28 in Salem.

Matt Moore has more than 20 years of experience and has recently completed an assignment as the lead inspector on the Salem Depot Intersection LPA (12334) Project, which included roadway reclamation, step box widening, drainage, and traffic signal improvements. Matt's inspection experience also includes the Laconia Court Street project, consisting of 5,000 feet of roadway improvements ranging from drainage improvements to improving ADA accessibility.

Dave Brouillet has been with MJ for more than 15 years and has more than 32 years of experience. His LPA construction observation experience includes the replacement of the bridge deck on the Kelley Street Bridge in Manchester as well as several projects in Bedford.

MJ will add a subconsultant to our CE&I Team for materials inspection and testing services as the need arises.

Additional team members consist of a strong group of staff engineers with experience on many LPA projects and are shown on the table below.

CONSTRUCTION ENGINEERING AND INSPECTION SERVICES IN SUPPORT OF LPA PROJECTS		YEARS OF EXPERIENCE	YEARS WITH FIRM	TECHNICIAN INSPECTOR - LEVEL I	TECHNICIAN INSPECTOR - LEVEL II	TECHNICIAN INSPECTOR - LEVEL III	ENGINEER INSPECTOR - LEVEL I	ENGINEER INSPECTOR - LEVEL II	ENGINEER INSPECTOR - LEVEL III	PROJECT MANAGER/CON. ENG OF RECORD	ENVIRONMENTAL INSPECTOR	NH LICENSED PROFESSIONAL ENGINEER	CESSWI CERTIFIED	CPESC CERTIFIED	NETTTP CERTIFIED	LPA CERTIFIED
		KEY PERSONNEL	PROJECT ROLE													
Rich Rooney, PE	Project Manager (Bridge)	33	20							•		•				
Brian Colburn, PE, CPESC	Project Manager (Highway)	23	23							•		•		•		•
Tom Kendrick, PE	Principal-in-Charge	30	17									•				
Steve Ireland, PE, PTOE	Engineering Inspector III	27	10						•							•
Dave Brouillet, EIT	Engineering Inspector III	32	15						•							
Rob Luchini, PE	Engineering Inspector II	12	11					•				•				•
Matt Moore, PE	Engineering Inspector II	20	10					•								•
Brian Patinskas, PE	Engineering Inspector I	11	11				•					•				•
Dan White, PE	Engineering Inspector I	9	9				•					•				•
Sam White, PE	Engineering Inspector I	11	11				•					•				•
Dhruv Patel	Engineering Inspector I	11	7				•									
Kevin McMahon	Technician Inspector III	18	5			•									•	•



Route 103 Traffic Calming and Roundabout, Warner

Client References



Ms. Nancy Merrill

Director, Planning & Economic Development
City of Claremont
(603) 504-0340
nmerrill@claremontnh.com
CLAREMONT 13888 – Sugar River Pedestrian Bridge Project
CLAREMONT 23677 – Main Street Reconstruction Project



Mr. James Danis

Capital Projects Engineer
Town of Salem
(603) 89-2038
jdanis@salemnh.gov
Depot Intersection Reconstruction – Construction Engineering & Inspection Services



Mr. Don Lussier, P.E.

City Engineer
City of Keene
350 Marlboro Street
Keene, NH 03431
(603) 352-6550
dlussier@keenenh.gov
Roxbury Street Bridge – Construction Engineering & Inspection Services



Crown Street Rehabilitation, Nashua



Rich Rooney, PE

PROJECT MANAGER/CONSTRUCTION ENGINEER OF RECORD

Rich has more than 33 years of industry experience and leads our Transportation Construction Engineering and Inspection practice based out of our Concord, NH office. Rich is also responsible for leading our CE&I services throughout the Northeast including many municipal (LPA) and State DOT highway and bridge construction projects. He has managed numerous State and Federally Funded projects through construction in accordance with State DOT and LPA guidelines.

Rich's CE&I duties have included project management, shop drawing review, working with project stakeholders to resolve construction questions and issues, assignment and supervision of inspection staff, construction scheduling and client coordination. Rich's role at MJ has included serving as MJ's Construction Supervisor responsible for monitoring inspector project documentation and ensuring overall compliance with DOT Specifications and Local Project guidelines.

EDUCATION

BSCCE – University of New Hampshire | Civil Engineering | 1991

DOT Construction Inspection & Oversight Course – 2012

Construction Administration & Inspection Software Training - 2012

ARRA Construction Office Engineer Training – 2010

REPRESENTATIVE EXPERIENCE

CLAREMONT 13888 – Sugar River Pedestrian Bridge – Project Manager for the design and construction of a new 210-foot pedestrian bridge spanning the Sugar River that connects the Visitors Center to the north with the Mill District to the south. The project scope included pathway approaches at both ends of the bridge, lighting, landscaping, and environmental permitting. *Project Owner: City of Claremont*

AUBURN - York Street Urban Collector Roadway Reconstruction – Project Manager during construction phase of this \$6M locally administered project which involved the reconstruction of approximately 1.5 km of a heavily congested urban collector, within an industrial section of the City. *Project Owner: City of Auburn*

APALACHIN - Pennsylvania Avenue Bridge over Long Creek – Project Manager responsible for construction engineering & inspection phase for this bridge replacement project. This project involved the design and construction of a 45-foot long replacement structure for a bridge that was washed out during flooding caused by Tropical Storm Lee. *Project Owner: Tioga County*

OWEGO - Southside Drive over Pumpelly Creek Bridge Replacement – Project Manager responsible for construction oversight and ARRA schedule adherence. This project included the replacement of an existing two-span bridge with a single-span bridge. Construction activities were performed in accordance with DOT and FHWA guidelines. This ARRA funded project successfully passed multiple audit/reviews by FHWA and NYSDOT Main Office for rigorous reviews of project documentation for compliance with State and Federal requirements. *Project Owner: Tioga County*

UNION - Hooper Road over NYS Route 17C ABC Bridge Rehabilitation Project - Project Manager responsible for CE&I for this \$1.6M ABC bridge rehabilitation project. Construction alternatives that minimized the impact to the public during construction were of the highest importance. ABC techniques, including the use of prefabricated bridge components, increased safety, minimized disruptions, and required only 21 days to complete construction. The existing 3-span superstructure was replaced with new steel beams and full-depth precast concrete deck panels.



Steven Ireland, PE, PTOE

ENGINEER INSPECTOR, LEVEL III

Steve has more than 27 years of experience in the management and design of highway and bridge projects, including the construction and maintenance of roadways. His experience includes developing designs for roundabouts, traffic signals, unsignalized intersections, and roadway corridors, as well as safety projects that implemented signing, resurfacing, and guardrail improvements. Steve also has significant experience on the construction side, having served as the resident engineer for over eight years on numerous bridge and highway construction projects, including the first ever accelerated bridge in New Hampshire. He has also developed the permitting needed for such projects, including those required by the NHDES, EPA, and the Army Corps of Engineers. Steve is well versed in the use of MicroStation and InRoads, as well as AutoCAD/Civil3D, and has experience with highway maintenance, having served as a District Maintenance Engineer for NHDOT for over nine years.

EDUCATION

BS - University of New Hampshire | Civil Engineering | 1996

Certificate - RedVector | OSHA 10 Hour Construction Program Training | 2014

Certificate - New Hampshire DOT | Local Public Agency | 2024

Certificate - New Hampshire DOT | Local Public Agency Certification Training - Federal Aid | 2024

REPRESENTATIVE EXPERIENCE

CONCORD 12004 - Sewalls Falls Bridge Replacement over the Merrimack River - This bridge project involved the replacement of the Sewalls Falls Bridge and approach roadway. The existing two-span 100-year-old bridge truss was replaced by a three-span, steel girder bridge supported by drilled-shaft river piers. *Project Owner: City of Concord*

NORTHWOOD 41397 - Bow Lake Road over Sherburne Brook - MJ was selected MJ to design the replacement of the Red List Bridge carrying Bow Lake Road over Sherburn Brook. Using an ABC approach, MJ developed an innovative long weekend closure over Columbus Day weekend to replace the bridge, minimizing impacts to the school system bus routes and the time that residents were required to traverse the ten mile detour around Bow Lake. A hydraulic analysis carefully considered the remnants of a historic dam located upstream of the bridge. *Project Owner: Town of Northwood*

KEENE 15854 - Roxbury Street over Beaver Brook - This bridge project involved the replacement of a 22' span with a new three-sided precast concrete rigid frame. Using an ABC approach MJ developed a design that allowed the bridge to be reconstructed in 60 days minimizing impacts to commuters and the school system on this busy roadway. The bridge is founded on clay which required investigations and coordination, ultimately requiring a mud slab to be installed to ensure that construction did not disturb the clay layer. Water, sewer, and natural gas utilities were relocated to be installed below the bridge. *Project Owner: City of Keene*

Prior to joining MJ, Steve completed many construction inspection assignments for NHDOT. Below are a few of those assignments.

Route 101 Exeter to Hampton, NH 10421 10423 and 10025 -- Resident engineer responsible for construction administration and inspection for seven projects totaling approximately \$25 million. The projects involved the construction of several miles of limited access highway, including eight bridges and three traffic signals, as well as a single point diamond interchange. *Project Owner: NHDOT*

Route 87 Epping, NH -- Resident engineer responsible for construction administration and inspection. This project consisted of constructing 0.5 miles of NH Route 87, including a long, single span bridge, over the Wild and Scenic portion of the Lamprey River. The contract amount was \$2.3 million. *Project Owner: NHDOT*



Kevin McMahon

TECHNICIAN INSPECTOR, LEVEL III

Kevin has more than 18 years of experience working on large scale civil construction projects for municipal and state agencies. For the NHDOT, as an Engineering Technician / Contract Administrator, he worked on highway and bridge construction projects, bringing a wealth of knowledge to a project. Kevin's bridge experience includes rehabilitation of existing structures as well as new construction of multiple span concrete and steel, multi-girder structures over multiple phases of construction. His highway construction experience includes traffic control, retaining wall, grading, drainage, pavement, and overhead sign structure construction inspection. With Kevin's NHDOT experience, maintaining project records to Federal Highway Administration standards has become second nature.

EDUCATION

AS - New Hampshire Technical Institute | Architectural Engineering Technology | 2005

Certificate - New Hampshire Technical Institute | Civil Engineering Technology | 2005

Certificate - ACI | Concrete Field Testing Technician - Grade 1

Certificate - NETTCP | Soils and Aggregate Inspection #919

Certificate - NETTCP | Hot Mix Asphalt Paving Inspector #2582

Certificate - NETTCP | Concrete Inspector

Certificate - National Highway Institute | Construction Zone Safety Inspection

Certificate - National Highway Institute | Construction Inspection, Workmanship & Quality

Certificate - ATSSA/FHWA | Traffic Control Design Specialist

REPRESENTATIVE EXPERIENCE

Claremont-Pleasant Street Revitalization, Claremont, NH – Construction Inspector. The City of Claremont identified the area surrounding Opera House Square as an area for redevelopment. MJ identified and analyzed traffic configurations and provided several alternatives. The City chose to reconfigure Pleasant Street into a one-way street, providing wider sidewalks and additional parking to encourage retail and family-friendly development. New traffic signals were also provided to keep traffic moving, reducing the percentage of large trucks in the downtown. *Project Owner: City of Claremont*

Court Street Reconstruction, Laconia, NH – Lead Inspector for the reconstruction of Court Street (Business US Route 3/NH Route 11A), a highly volume roadway which serves as the main commercial corridor of the City. The project included a new drainage system, new pavement and subbase material, and an update to the existing sidewalks and intersections to meet the ADA requirements. *Project Owner: City of Laconia*

Salem 12334 – NH 28/NH 97 (Salem Depot) Intersection Improvements – Construction Inspector for this project to widen and improve this busy intersection. The LPA project was broken into two separate projects; the first to remove five existing buildings and clean up associated hazardous materials, while the second contract constructed the intersection. *Owner: Town of Salem*

Prior to joining MJ, Kevin completed several construction inspection assignments for NHDAS and NHDOT. Below are a few of those assignments.

Bedford-Manchester-Londonderry-Merrimack 11512 Manchester-Boston Regional Airport Access Road Design – Construction Inspector for multiple construction contracts. This \$110M award-winning project involved the design of a new airport access road. The project site included approximately 2.5 miles of new roadway, multiple ramps and side roads, a new 1,200' bridge crossing the Merrimack River, six additional bridges, a modified diamond interchange and two roundabouts. *Project Owner: New Hampshire Department of Transportation*

Hooksett 15803 Installation of Open Road Tolling at Hooksett Toll Plaza – Construction Inspector on this construction contract to remove a portion of the existing conventional toll plaza and replace it with an Open Road tolling facility. This \$23M project involved extensive modifications to the existing toll facility, installation of a median barrier and adjacent concrete barriers to separate high speed toll traffic from adjacent manual tolling lanes. *Project Owner: New Hampshire Department of Transportation*



Brian Colburn, PE, CPESC

PROJECT MANAGER/CONSTRUCTION ENGINEER OF RECORD

Brian has more than 23 years of experience in the management, design, and construction of transportation infrastructure projects. His experience ranges from large interstate highway projects to small intersection modifications and local road projects. Brian has specialized experience in the design of roundabouts, park and ride lots, ADA facilities, and airport infrastructure like runways, taxiways, and airport access roadways. He has experience on the construction side, having administered and observed construction on numerous projects. His expertise includes traffic modeling, alignments, drainage, utilities, quantities, right-of-way, signing, lighting, and cost estimates. Brian leads MJ's highway design group in Concord, NH.

EDUCATION

BS - Rensselaer Polytechnic Institute | Civil Engineering | 2001

Specialized Training - Workforce New York | 10-Hour OSHA Construction Course | 2007

Certificate - EnviroCert International | Certified Professional in Erosion & Sediment Control (CPESC) | 2011

Certificate - NHDOT | Local Public Agency Certification Training - Federal Aid | 2024

REPRESENTATIVE EXPERIENCE

Brian has served as Lead Inspector or Project Manager on many LPA projects in New Hampshire including the following:

NASHUA 13117 - Crown Street Park and Ride – Project Manager for the design and construction administration/observation of this project to construct a park and ride lot. The site required extensive hazardous material mitigation and stormwater treatment facilities and is designed to accommodate a future rail station. *Project Owner: City of Nashua*

CONCORD 12004 - Sewalls Falls Bridge Replacement over the Merrimack River – Project Manager for the construction administration/observation of a replacement of the Sewalls Falls Bridge and approach roadways. The existing two-span 100-year-old bridge truss was replaced by a three-span, steel girder bridge supported by drilled-shaft river piers. *Project Owner: City of Concord*

WARNER 15972 - NH Route 103 Traffic Calming & Roundabout – Project Manager for the construction administration/observation of this project to install traffic calming measures along NH Route 103 in order to improve safety for motorists and pedestrians near Exit 9 on Interstate 89. The project included the installation of a roundabout along with improved driveway access to the adjacent businesses and a park and ride lot. *Project Owner: Town of Warner*

CLAREMONT 23677 - Main Street Roadway Improvements – Project Manager for the design and construction administration/observation this project to reconstruct Main Street, including replacing most of the existing utilities, from Opera House Square to the intersection with Union Street, a distance of approximately 2,700'. The roadway and sidewalks were completely reconstructed, and bicycle and pedestrian facilities were added. *Project Owner: City of Claremont*

FRANKLIN 15584 - Downtown Transportation Improvement Project – Lead Inspector for modifications to Central Street to reduce congestion and improve access to the Mill Buildings in the downtown area. Improvements to the existing pavement, sidewalks, crosswalks, ADA facilities and traffic signals were also included as part of the project. *Project Owner: City of Franklin*

CLAREMONT – Improvements to Water Street and the Mill Area – Project Engineer and Lead Inspector for modifications to Water Street and the surrounding roadways within Claremont's historic Millyard area. This project involved the reconstruction of Water Street and other roadways as well as landscape/hardscape enhancements and complete replacement of existing underground electric and telephone utilities. *Project Owner: City of Claremont*



Matthew Moore, PE

ENGINEERING INSPECTOR, LEVEL II

Matt has more than 21 years of experience in the design and construction of roadways and stormwater and utility infrastructure for public and private clients. His roadway design experience includes both state transportation departments and municipalities as well as the design of facilities within airports and private land developments. Matt's experience includes the serving as the lead construction inspector on roadway construction projects that featured roadway reclamation & widening, drainage improvements, ADA accessibility improvements and traffic signal installation.

EDUCATION

*BS - Civil Engineering /
Northeastern University / 2007*

*Certificate - OSHA 10 Hour
Construction Program Training /
RedVector / 2014*

*Certificate - Local Public Agency
/ New Hampshire Dept of
Transportation / 2024*

*Certificate – LPA Certification for
Labor Compliance / New
Hampshire Dept of
Transportation / 2024*

Salem 12334 – Salem Depot Intersection Improvements

Project Owner: Town of Salem

Laconia – Court Street Improvements

Project Owner: City of Laconia

Claremont 23677 - Main Street Reconstruction (Design)

Project Owner: City of Claremont

Keene - 10309B - Winchester Street (Design)

Project Owner: City of Keene

Portsmouth 20258 - Peverly Hill Road (Design)

Project Owner: City of Portsmouth



David Brouillet, EIT

ENGINEERING INSPECTOR, LEVEL III

Dave has more than 32 years of experience in the design and construction of transportation and aviation projects throughout New England. He has extensive experience in construction inspection, where he has served as the resident engineer and chief inspector on many large aviation and roadway projects, including LPA projects in New Hampshire, as well as on projects for NHDAS. He has served as the lead inspector on the following projects:

EDUCATION

*BSCE - New England College |
Civil Engineering | 1992*

*Specialized Training - OSHA |
10-Hour Training Course | 2009*

REPRESENTATIVE EXPERIENCE

MANCHESTER 15390 – Rehabilitation of the Kelley Street (Nazaire E. Biron) Bridge *Project Owner: City of Manchester*

BEDFORD 20000 – Rehabilitation of the Wallace Road Culvert over Riddle Brook *Project Owner: Town of Bedford*

NHARNG Concord State Military Reservation Renovations
Project Owner: New Hampshire Department of Administrative Services

NHARNG Center Strafford Training Site Renovations
Project Owner: New Hampshire Department of Administrative Services

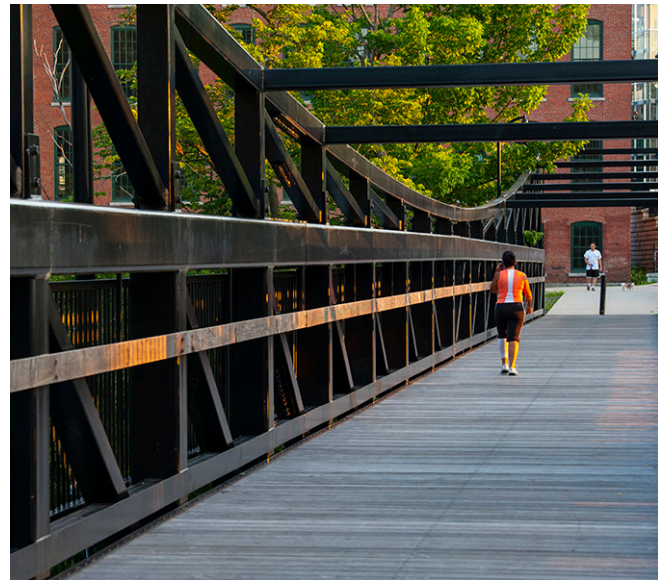
NHARNG Concord State Military Reservation Fence Construction
Project Owner: New Hampshire Department of Administrative Services

RIAC T. F. Green Airport Runway 16 End Reconstruction
Project Owner: Rhode Island Airport Corporation

B Project Profiles



Pleasant Street Reconstruction, Claremont



Sewalls Falls Bridge Replacement, Concord, NH

This municipally-managed LPA bridge replacement project involved the evaluation, design, and construction of the Sewalls Falls Bridge and approach roadway, including developing complete plans for a new bridge and roadway. The project utilized the FHWA's Every Day Counts initiative to develop the preliminary design as well as final design leading to full construction drawings. Work tasks included bridge and roadway design, environmental documentation and permitting, survey, hydraulic design, geotechnical investigation, right-of-way, utility coordination, and public outreach, including a project website. MJ also provided Construction Engineering and Inspection services to ensure the project was constructed in compliance with the Contract Documents and NHDOT standards and specifications. MJ's inspector was responsible for daily inspection of construction activities, measurement of in-place quantities, control and documentation of materials approvals and certifications, contractor payments, oversight of on-site materials testing and monitoring of Contractor compliance with DBE and EEO.

Client: City of Concord

Contact: Ms. Martha Drukker
Associate Engineer

Phone: 603-225-8520

Completion Date: 2018

Construction Cost: \$9,500,000

Funding Program: MOBRR

New Pedestrian Bridge over Sugar River, Claremont, NH

This project included the construction of a new 210 foot pedestrian bridge spanning the Sugar River that connects the Visitors Center to the north with the Mill District to the south. The project scope included pathway approaches at both ends of the bridge, lighting, landscaping, and environmental permitting.

MJ's services included construction engineering and inspection in accordance with NHDOT guidelines. Full-time inspection services included daily oversight of Contractor and Subcontractor activities, measurement of in-place quantities, review/approval of payment applications and ensuring the project was constructed in compliance with the Contract Documents and State design standards and specifications.

Client: City of Claremont

Contact: Ms. Nancy Merrill
Director Planning & Economic
Development

Phone: 603-504-0340

Completion Date: 2008

Project Cost: \$1,200,000

Funding Program: TE



Roxbury Street Bridge Replacement, Keene, NH

The existing Roxbury Street bridge over Beaver Brook was replaced with a 22' long three-sided precast concrete rigid frame. Using an ABC approach, MJ developed a design that allowed the bridge to be reconstructed in sixty days minimizing impacts to commuters and the school system on this busy roadway. The bridge is founded on clay which required extensive geotechnical investigations and coordination, ultimately requiring a mud slab to be installed to ensure that construction did not disturb the clay layer. Water, sewer, and natural gas utilities were relocated to be installed below the bridge. MJ provided construction engineering and inspection services during construction of the replacement bridge. Services included review and approval of Contractor shop drawings and submittals as well as full-time construction inspection during the sixty-day bridge closure. MJ's inspector performed daily oversight of all Contractor and Subcontractor activities and developed construction field records to document that the replacement bridge was constructed in accordance with the Contract Documents and NHDOT guidelines. Inspection responsibilities included measurement of in-place quantities, processing payment requisitions, oversight of materials testing and ensuring material compliance.

Hannah Nutter Bridge over Big River, Barnstead, NH

This project consisted of the replacement of a 34' long bridge consisting of double Tee concrete girders on stone masonry abutments with a new 42' precast concrete three-sided rigid frame with an open bottom that satisfied NHDES Stream Crossing Guidelines. The approach roadway was realigned to meet the minimum design speed of 30 mph, requiring acquisition of temporary and permanent easements. MJ provided construction engineering and inspection services during construction of the replacement bridge. Services included shop drawing review, consultation during construction and construction inspection services. MJ's construction inspector was responsible for daily oversight of construction activities to ensure compliance with the Contract Documents and development of project records. Inspection responsibilities included measurement of in-place quantities, processing payment requisitions and ensuring Contractor compliance with NHDES Permits and USACE authorizations.

Client: City of Keene

Contact: Mr. Don Lussier, P.E.
City Engineer

Phone: 603-352-6550

Completion Date: 2021

Construction Cost: \$1,193,000

Funding Program: State-Aid
Bridge

Client: Town of Barnstead

Contact: Ms. Karen Montgomery
Town Administrator

Phone: 603-269-4071

Completion Date: 2021

Construction Cost: \$885,000

Funding Program: State-Aid
Bridge



Bow Lake Road, Northwood, NH

The Town of Northwood selected MJ to design the replacement of the Red List Bridge carrying Bow Lake Road over Sherburn Brook. Using an ABC approach, MJ developed an innovative long weekend closure over Columbus Day weekend to replace the bridge, minimizing impacts to the school system bus routes and minimizing the time that residents were required to traverse the ten mile detour around Bow Lake. A hydraulic analysis carefully considered the remnants of a historic dam located upstream of the bridge.

MJ is providing construction engineering and inspection services during construction of the replacement bridge. Services include shop drawing review, consultation during construction and part-time construction inspection services to ensure the project is constructed in compliance with the Contract Documents and NHDOT guidelines. Inspection responsibilities include measurement of in-place quantities, processing payment requisitions, ensuring Contractor compliance with regulatory permits, utility coordination, and facilitation of weekly progress meetings.

Depot Intersection Reconstruction, Salem, NH

This NHDOT municipally-managed LPA project involved the reconstruction of the intersection of Route 28 and Route 97. Known as the Salem Depot, and one of the main intersections on Route 28, it serves as the main commercial corridor of the Town, and serves nearly 20,000 vehicles per day. The improvements include widening Route 28 to allow for an exclusive left turn lane on both the north and southbound approaches, extensive stormwater improvements, new traffic signals, ITS equipment, decorative street lighting and ADA accessible sidewalks. MJ provided Construction Engineering and Inspection services to ensure the project was constructed in compliance with the Contract Documents and NHDOT standards and specifications. MJ's inspector was responsible for daily inspection of construction activities, measurement of in-place quantities, control and documentation of materials approvals and certifications, contractor payments, oversight of on-site materials testing and monitoring of Contractor compliance with DBE and EEO.

*Statewide On-Call Construction Engineering and Inspection Services Prequalification
Revised January 2024*

Client: Town of Northwood

Contact: Mr. Hal Kreider
Board of Selectman

Phone: 603-942-5586

Completion Date: 2020

Project Cost: \$563,000

Funding Program: State-Aid
Bridge

Client: Town of Salem

Contact: Mr. James Danis
Capital Projects Engineer

Phone: 603-890-2038

Completion Date: 2023

Construction Cost: \$2,455,000

Funding Program: Surface
Transportation Program



Pleasant Street Improvements, Claremont, NH

The City of Claremont has suffered from the deterioration of the downtown area. The area surrounding Opera House Square was particularly distressed and ripe for redevelopment. MJ identified and analyzed several options to improve traffic flow while encouraging visitation within the area. A robust public outreach program led to the selection of an alternative that reconfigured Pleasant Street into a one-way street, providing room for wider sidewalks and additional parking in an area that would lend itself to retail and family-friendly development. Pleasant Street has been completely reimagined into a Complete Street, with new traffic signals that keep all traffic modes moving while removing a significant percentage of large trucks from the downtown area, encouraging pedestrians to visit and linger, along with bicyclists. MJ's work also included Construction Engineering and Inspection. Daily responsibilities included oversight of Contractor & Subcontractor activities, measurement of in-place quantities, review of certified payrolls and labor compliance, oversight of on-site materials testing, and processing Contractor payment requests.

Client: City of Claremont
Contact: Ms. Nancy Merrill
Director, Planning and Economic
Development
Phone: 603-504-0340
Completion Date: 2022
Construction Cost: \$3,935,000
Funding Program: Municipal

Route 103 Traffic Calming & Roundabout, Warner, NH

This project involved the design and construction of traffic calming measures to improve safety for motorists and pedestrians using Route 103 at and adjacent to Exit 9 on Interstate 89 and included a single lane roundabout, improving the driveway intersection connecting businesses and access to a park and ride lot. MJ developed contract drawings, performed a traffic study, reviewed the crash history, and identified existing environmental, natural, and cultural resources to determine potential impacts and develop necessary permitting. MJ provided Construction Engineering and Inspection services on this State-Aid Highway project in conformance with NHDOT guidelines. Daily full-time inspection responsibilities included inspection of all Contractor and Subcontractor activities, measurement of in-place quantities, processing Contractor payment applications, daily inspection of traffic control measures, control and documentation of materials approvals and certifications, oversight of on-site materials testing.

Client: Town of Warner
Contact: Mr. William Rose
NHDOT Project Manager
Phone: 603-271-6581
Completion Date: 2017
Construction Cost: \$748,000
Funding Program: State Aid
Highway Program



Main Street Roadway Improvements, Claremont, NH

MJ developed the contract plans for the reconstruction of a historic section of Main Street in Claremont. The project required attention to detail to upgrade to ADA standards while grading around existing historic structures. The objective of the Main Street Reconstruction project was to upgrade the road condition from Opera House Square to the intersection with Union Street, a distance of approximately 2,700'. This LPA project determined whether roadway rehabilitation or reconstruction were necessary and improved the bicycle and pedestrian facilities while addressing ADA accessibility issues.

MJ provided full-time on-site construction inspection to ensure the project was constructed in compliance with the Contract Documents and State design standards and specifications. MJ's inspector was responsible for daily inspection of construction activities, measurement of in-place quantities, control and documentation of materials approvals and certifications, contractor payments, and oversight of on-site materials testing.

Court Street Reconstruction, Laconia, NH

Court Street (Business US Route 3/NH Route 11A) is a highly traveled roadway, serving nearly 16,000 vehicles per day, through the City of Laconia which serves as the main commercial corridor of the City and a link between Interstate 93 to the west and Lake Winnepesaukee to the east. This project included reconstruction of Court Street to incorporate a new drainage system, replace roadway and subbase material, improve pavement markings and signage, and reconfigure the sidewalks and intersections to meet the Americans with Disabilities Act.

MJ provided full-time construction engineering and inspection services to ensure the project was constructed in compliance with the Contract Documents and State design standards and specifications. The inspector was responsible for daily inspection of construction activities and record keeping in accordance with NHDOT guidelines. Inspector duties included: measurement of in-place quantities, control and documentation of materials approvals and certifications, contractor payments and daily inspection of the work zone traffic control measures used the congested urban site in the City of Laconia.

*Statewide On-Call Construction Engineering and Inspection Services Prequalification
Revised January 2024*

Client: City of Claremont

Contact: Ms. Nancy Merrill
Director, Planning and Economic
Development

Phone: 603-504-0340

Completion Date: 2017

Construction Cost: \$2,600,000

Funding Program: Federal
Earmark

Client: City of Laconia

Contact: Mr. Wesley Anderson
Director of Public Works

Phone: 603-528-6379

Completion Date: 2019

Construction Cost: \$2,500,000

Funding Program: Municipal



Highway & Bridge Design | Aviation Planning & Design
Construction, Engineering, and Inspection Services
Environmental Services | Technology Solutions | Public Outreach
Building & Facilities | Site/Civil Services



53 Regional Drive, Concord, NH 03301 | 603-225-2978 | www.mjinc.com