

Prequalifications



Statewide On-Call Construction Engineering and Inspection Services - Prequalified List of Consultants for Local Public Agency Projects 2024 Update

Submitted To:



Submitted By:



February 2, 2024



1. Introduction Letter

1. INTRODUCTION LETTER

February 2, 2024

Mr. C.R.Willeke, PE
Municipal Highways Engineer The Bureau of Planning & Community Assistance
Email: charles.r.willeke@dot.nh.gov

**Re: Statewide On-Call Construction Engineering and Inspection Services Prequalified
List of Consultants for Local Public Agency Projects – 2024 Update**
Ref: Willeke E-Mail to WSP's Baker, dated December 14, 2023

Dear Mr. Willeke:

WSP USA, Inc. (WSP), is pleased to submit this updated prequalifications package for the New Hampshire Department of Transportation (NHDOT) Statewide On-Call Construction Engineering and Inspection Services – LPA Prequalified Long List.

WSP has worked hard to build a reputation as the top provider of construction services in northern New England, and currently with a mix of state and local public agencies, we are delivering projects big and small, in rural and urban areas. Our Construction Services Group has been under contract with the NHDOT Construction Bureau since 2010, and over time have become a trusted advisor, chosen to help deliver special projects, as well as those needing timely, experienced inspection staff. In 2012, we were a key part of the joint effort between NHDOT and ACEC to prepare and provide Construction 101 Training for municipal officials, their staff, and other consultants who implement and inspect LPA projects. The nuts & bolts training was intended to enhance the ongoing LPA Certification Program.

Jim Anderson, LPA will be the lead manager for these services, and supported by **Shaun Flynn, PE** as the designated construction engineer-of-record. Combined, they both bring demonstrated hands-on success with a range of LPA projects. Their keen understanding of the LPA process, and how to effectively engage designers during construction will add unmatched value, helping to minimize surprises, and deliver projects, on schedule, and on budget. Minimizing external coordination, we are equipped to provide construction survey layout, if needed to LPAs, through our in-house geospatial group located in Merrimack, NH. Finally, we are pleased that **SW Cole Engineering, LLC** (SWC) has joined our team to augment the materials and testing requirements. Our working relationship with SWC dates to 2005, and includes the award-winning LPA Broad Street Parkway, the LPA Champlain Parkway, Parker's River Bridge, and other small, rural projects.

We are confident that the enclosed qualifications will demonstrate our understanding and approach, our capacity to perform quickly and efficiently, the unmatched experience of the managers, and our unwavering support of our public-sector clients. Please call or e-mail me if you have any questions or need additional information (617.501.7066 - mobile, or jim.anderson@wsp.com - e-mail).

Yours sincerely,
WSP USA Inc.



James D. Anderson
Senior Vice President
New England District
PM/CM Business Line Leader

WSP USA Inc.
10 Al Paul Lane - Merrimack, NH 03054
603.324.0891 www.wsp.com



2. Project Understanding and Approach

2. PROJECT UNDERSTANDING AND APPROACH

Although design is a big part of WSP, construction engineering and inspection (CEI) is also ‘who we are and what we do’ daily. Our New Hampshire offices construction engineering and inspection offices have successfully served the northern New England area, for two decades, with CEI and administration services. We are accustomed to working as an extension of client teams and maintain 60-70 full time CEI staff, with approximately 10% “on the bench” at periodic intervals. The nature of LPA assignments is such that work schedules vary and staff requirements change over the course of construction.

After the LPA’s CEI selection the focus will need to be in three key areas: 1) preconstruction conference, 2) anticipated inspection and testing needs, and 3) project records / setting up the books. Our team and pool of CEI resources are ready to mobilize maintained various records, including the Lab Book for all testing and sampling, across multiple projects.

WSP adheres to the philosophy that “closeout starts on Day One.” We will be diligent from the day our assignment is launched, until the ‘finals’ are complete and turned over to the local sponsor. Project records are essential to document activities and without adequate paperwork, it could jeopardize payments or reimbursements by either NHDOT or FHWA.

Task 1: Construction Engineering

The WSP Team will communicate with the LPA’s Municipal Project Manager (MPM) regularly and coordinate directly with the Contractor, the Utility Companies as warranted, Public Works Departments, and the Designer and NHDOT, when needed. This coordination will include the preconstruction conference, weekly progress meetings, “over-the-shoulder” technical submittal or shop drawing reviews, special meetings, on-site “coffee cup” utility company coordination and substantial and final inspection. The WSP Team will keep a detailed record of meeting minutes, team agreements and responsible parties with action items, to build accountability and ensure timely resolution. The Team has numerous templates for tracking this information, but we will collaborate with others to develop dashboards or other forms of communications that works best for you.

CEI Approach Principles

- Understand Safety Protocols
- Traffic Monitoring
- Rigorous Field Inspection
- Assure Environmental Compliance
- Project Pay Item Tracking and Quantity Calc Books
- Inspector’s Daily Reports
- Manage Materials Sampling/Testing and Certification
- Certified Payroll and Living Wage Reviews
- Changes/Claims Awareness and Management
- Finals, FHWS/NDOT Acceptance and Closeout
- No Surprises: Stay Informed and Communicate Daily

Prior to the preconstruction conference, the WSP Team will scrub the plans to gain a thorough understanding of the Special Provisions, Plans, Specifications, and Engineer’s Estimate. A review of the Estimate is particularly important to reconcile quantity take-offs and red-flag items that may represent a potential change order, before the work starts. The preconstruction conference is also a suitable time to discuss the presence of overhead utilities and those buried to be marked by Dig-Safe, or other utilities, i.e., City sewer and traffic signals, while receiving assurances that the Contractor has a plan of attack to avoid utility disruption.

Electronic daily reports, including the measurement of pay item quantities, will be prepared routinely by the Inspectors and reviewed by the Construction Engineer of Record before being submitted to the LPA. Any proposed design, and schedule changes or suggestions by the Contractor will be coordinated with the LPA Team. The WSP Team considers change order management to be part of the basic service and approaches the identification and issue resolution process as a top priority to minimize the LPA (and FHWA / NHDOT) risk, while avoiding potential claims. The WSP Team will review and verify the Contractor’s progress payment estimate bi-weekly or monthly prior to recommending payment. Acting pro-actively, the inspectors will reconcile pay

item quantities daily with the Contractor’s foreman or superintendent. This hands-on approach helps to identify disagreements quickly and leads to quicker resolution long before the “pencil” pay estimate is prepared. The WSP Team will regularly reconcile quantities and prepare a cost-to-complete to anticipate potential overruns. This interim step smooths out the process and helps make the final contract quantity reconciliation more efficient, helping to minimize compounding of errors while the work is underway, instead of at ribbon cutting. It also assures that the Federal / State reimbursement and local cash flow process runs efficiently, with reliable back-up.

We will review RFIs, certificates, computations and reference materials submitted by the Contractor and maintain this information within the project files. We are prepared to review and code submittals and shop drawings in consultation with the Designer. We have found a quick, cursory review prior to the designer’s review helps minimize the rejection of submittals due to lack of required information. The Construction Engineer of Record will do this first pass. A certificate of substantial and final completion will be issued at the appropriate time.

Task 1 Deliverables: Meeting minutes, payment estimates and submission of project records including, but not limited to: calculations to verify quantities, materials testing reports, certificates of compliance, RFIs, change orders and contractor affidavits. We are prepared to manage the flow of information, and documentation electronically (like NHDOT’s IDP) using various computer platforms such as APPIA (cloud-based version of AASHTO’s Field Manager), Doc Express, Bluebeam with Adobe PDF Reviewer, and Sharepoint, to name a few. This approach allows a quick collaborative, shared project approach to reviewing, approving, maintaining and finding documentation, before and after the project is complete.

Task 2: Construction Inspection

The WSP Team will be onsite when the Contractor and subcontractor(s) are performing activities. In general, this is translated as “until the corn brooms are put away,” and the work zones are safe and passable. They will confirm that the activities comply with all contract requirements, permits, ordinances, agreements, erosion prevention and sediment control, storm water management plan, state and federal statutes and regulations.

General construction inspection responsibilities also include:

- Review plans, specifications, and special provisions, including any bid addenda
- Coordinate survey verification and materials testing
- Perform certified payroll interviews
- Measure and document daily quantities
- Assure quality requirements are maintained
- Traffic Control set-up and monitoring
- Prepare daily reports, including digital photography
- Monitoring contractor safety plans

A joint inspection by the Contractor, LPA, Designer, and Construction Engineer of Record will occur when the Contractor claims substantial completion. The WSP Team will generate a punch list of items to be corrected or completed for project completion. Proactively, this punch list is developed 30-days before final completion to keep track of items that are still being worked, including incidental items that could be overlooked in the Contractor’s zeal to finish. The punch list is a dynamic tool, and starting the process early helps to minimize surprises, and a longer list of items, that if not completed already, may be pre-empted due to onset of an early winter.

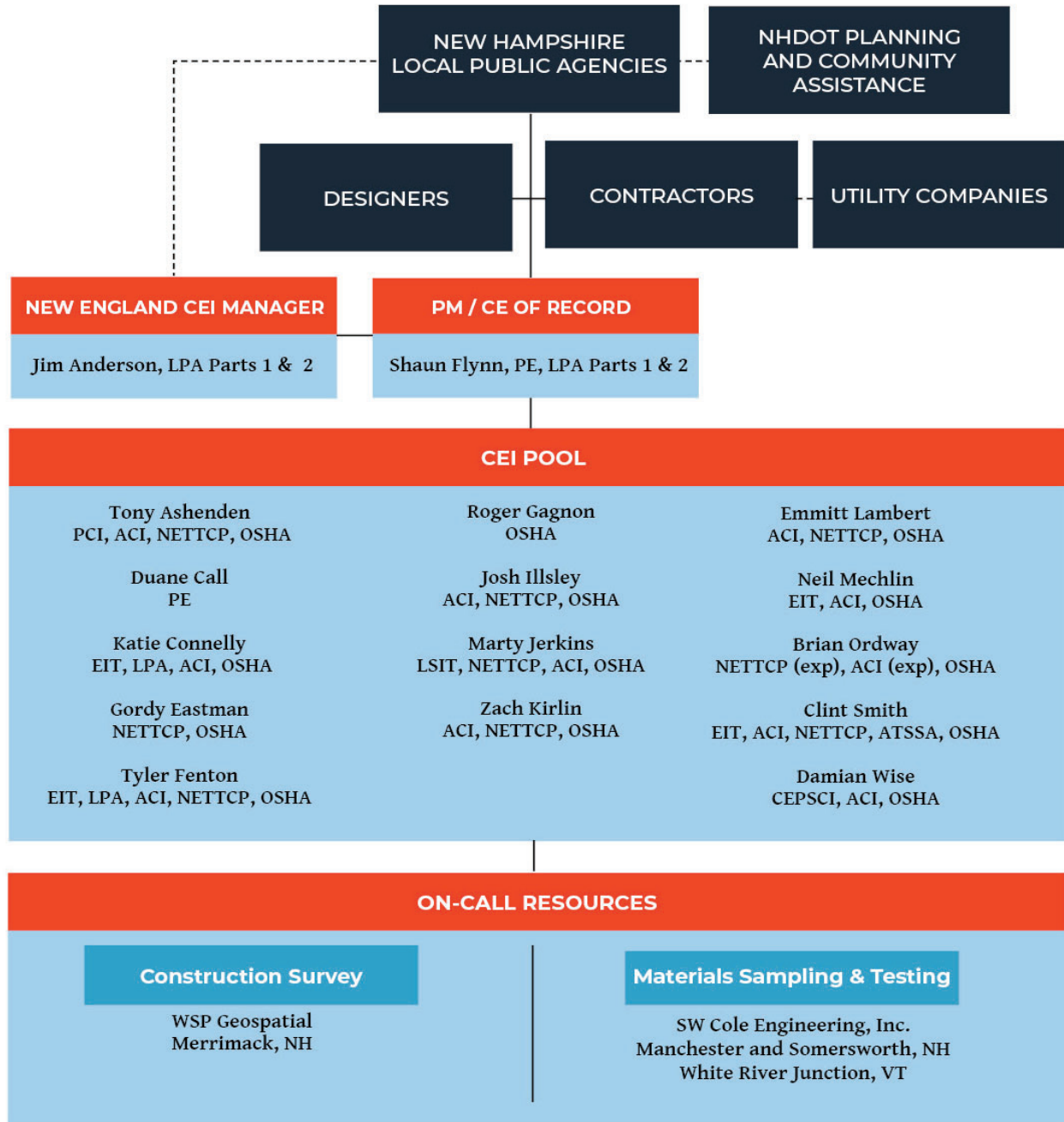
Task 2: Deliverables: Daily inspection reports, photographic records, final red-line plans, final punch list, and recommendation for substantial and final completion



3. Organizational Chart

3. ORGANIZATIONAL CHART

The following organization chart lays out how the reporting functions (solid line) and the communications loop (dashed lines) are envisioned for LPA projects. Communication will be the key to success, to assure that the project finishes on time, on budget, and without surprises.





4. Project Team

4. PROJECT TEAM

Jim Anderson, LPA, a New Hampshire native, will serve as principal-in-charge and technical advisor. Jim has over 40 years' experience managing construction engineering and inspection services, on hundreds of projects ranging from small roadways to larger bridges, to streetscape and traffic calming to adaptive re-use of rails to trails. He is a proven leader and has received excellent client ratings for his delivery and oversight of construction services. As the PM/CM New England District Manager and Principal-in-Charge, Jim will assure that Jim will assure that the local public agencies are served promptly and economically, while responding to any needs or concerns.

Shaun Flynn, LPA (pending), PE, a former NHDOT District Construction Engineer is proposed as the project manager and construction engineer of record. Starting his career with a site/civil engineering firm, Shaun quickly acquired a deep understanding of the integral permitting, design, engineering, and construction oversight process. Shaun retired from NHDOT after 37 years, and most recently with WSP has been overseeing the \$45 million Champlain Parkway, VT's largest LPA project ever constructed. Combined, this applied holistic, hands-on experience allows Shaun to understand the entire project delivery process, the nuances, the requirements, and the balance needed to make federal, and state funded projects work.

CEI Pool (Partial)

Tyler Fenton, LPA, EIT, a former NHDOT construction engineer and New Hampshire resident has a broad range of experience with underground utilities, roadways, bridges, hardscape and streetscape projects. Most recently, he has been the Construction Administrator overseeing the City of Manchester's complex LPA adaptive signal replacement project for some of the city's busiest streets. Equally comfortable leading or being part of a team, Tyler has excellent communication skills with contractors, designers and owners.

Duane Call, PE, also a former NHDOT construction engineer who spent his entire career inspecting, documenting and overseeing dozens of relevant projects in northern New Hampshire. Known for his strong work ethic, and ability to work through construction issues, by being firm, but fair, he exemplifies WSP's owner advocate approach, which is essential for LPA projects.

Katie Connelly, LPA, EIT, is a rising construction engineer, technically proficient inspecting and documenting projects from start to "finals." A self-starter and excellent communicator, she works easily with contractors, helping to resolve potential issues quickly. Katie is currently leading the field inspection work on the City of Manchester's LPA adaptive signal project, a complicated, logistically challenging assignment.

Subconsultants

Our subcontracting, professional relationship with SWCOLE Engineering, LLC (SWC) started in 2005, when they supported our NHDOT Statewide Materials and Testing contract. Since then, they have collaborated with WSP on the award-winning Broad Street Parkway, the Maine Turnpike open road tolling initiative, and currently are under contract with us for the Champlain Parkway and Vermont's Statewide materials testing needs. They have certified labs in Somersworth and Manchester, NH and White River Junction, VT.

| PROJECT TEAM / TITLES | | | | | | | | | | | | | | | | | | | |
|--|--|------------------------------------|---|---|--|---|--|--|--|---|---------------------------------------|--|--|--|--|----------------------------------|--|-----------------------------------|--|
| | Jim Anderson New England CD Manager | Shawn Flynn, PE Project Manager | Tony Ashenden Senior Construction Inspector | Duane Call, PE Construction Administrator | Rachel Connolly, EIT Construction Inspector | Gordy Eastman Senior Construction Inspector | Tyler Fenton, EIT Construction Administrator | Roger Gagnon Senior Construction Inspector | Josh Riley Senior Construction Inspector | Marty Jerkins Senior Construction Inspector | Zach Kirlin Construction Inspector | Emmitt Lambert Construction Inspector | Neil McMillan, EIT Senior Construction Inspector | Brian Ordway Senior Construction Inspector | Clint Smith, EIT Senior Construction Inspector | Damian Wise Environmental Rep | David Prince, ILS Survey Specialist | Jay LaBoine Survey Party Chief | Ryan Zamosold Survey Instrument Operator |
| Proposed NHDOT Title | N/A | PM/CE of Record | Tech Insp III | Eng Insp III | Eng Insp II | Tech Insp III | Eng Insp III | Tech Insp III | Tech Insp III | Tech Insp III | Tech Insp II | Tech Insp I | Eng Insp II | Tech Insp III | Tech Insp III | Env Insp | N/A | N/A | N/A |
| EXPERIENCE, LICENSES, AND SKILLS | | | | | | | | | | | | | | | | | | | |
| Years of Experience | 45 | 39 | 25 | 38 | 4 | 45 | 12 | 39 | 18 | 29 | 6 | 2 | 9 | 45 | 16 | 8 | 31 | 25 | 8 |
| Years with WSP | 32 | <1 | <1 | 4 | 3 | 9 | 6 | <1 | 16 | 8 | <1 | 2 | 2 | 6 | 14 | 6 | 27 | 17 | 7 |
| PE | | Y | | Y | | | | | | | | | | | | | | | |
| ILS | | | | | | | | | | | | | | | | | Y | | |
| LPA | Y | Y | | | Y | | Y | | Y | Y | | Y | Y | | | | | | |
| ACI | | | Y | | Y | | Y | Y | Y | Y | Y | Y | Y | | Y | Y | | | |
| NETTCP | | | Y | | Y | Y | Y | Y | Y | Y | Y | Y | Y | | Y | | | | |
| OSHA | Y | Y | Y | Y | Y | Y | Y | Y | Y | Y | Y | Y | Y | Y | Y | Y | | | |
| CEPSCI | | | | | | | | | | | | | | | | Y | | | |
| Bridge | Y | Y | Y | Y | Y | Y | Y | Y | Y | Y | | | Y | Y | Y | Y | Y | Y | Y |
| Roadway | Y | Y | Y | Y | Y | Y | Y | Y | Y | Y | Y | Y | Y | Y | Y | Y | Y | Y | Y |
| Streetscape/Hardscape | Y | Y | Y | Y | Y | Y | Y | Y | Y | Y | | Y | Y | Y | Y | Y | Y | Y | Y |
| Maintenance of Traffic | Y | Y | Y | Y | Y | Y | Y | Y | Y | Y | Y | Y | Y | Y | Y | Y | Y | Y | Y |
| Substructure or Superstructure | Y | Y | Y | Y | Y | Y | Y | Y | Y | Y | | | Y | Y | Y | Y | | | |
| Demolition | | | | | | | | | | | | | | | | | | | |
| Bridge Concrete Repairs | Y | Y | Y | Y | | Y | Y | Y | Y | Y | | | Y | Y | Y | Y | | | |
| Waterproofing Membrane | Y | Y | Y | Y | Y | Y | Y | Y | Y | Y | Y | Y | Y | Y | Y | Y | | | |
| Reinforced Concrete | Y | Y | Y | Y | Y | Y | Y | Y | Y | Y | Y | Y | Y | Y | Y | Y | | | |
| Permanent Concrete Barrier or Bridge Rail | Y | Y | Y | Y | Y | Y | Y | Y | Y | Y | | | Y | Y | Y | Y | | | |
| Aggregate Subbase | Y | Y | Y | Y | Y | Y | Y | Y | Y | Y | Y | Y | Y | Y | Y | Y | | | |
| Pavement | Y | Y | Y | Y | Y | Y | Y | Y | Y | Y | Y | Y | Y | Y | Y | Y | | | |
| Structural Steel Repairs | Y | Y | Y | Y | Y | Y | Y | Y | Y | Y | | | Y | Y | Y | Y | | | |
| Roadway Drainage | Y | Y | Y | Y | Y | Y | Y | Y | Y | Y | Y | Y | Y | Y | Y | Y | | | |
| Traffic Signalization | Y | Y | Y | Y | Y | Y | Y | Y | Y | Y | | | Y | Y | Y | Y | | | |
| Signage and Striping | Y | Y | Y | Y | Y | Y | Y | Y | Y | Y | Y | Y | Y | Y | Y | Y | | | |
| Erosion and Sedimentation Control | Y | Y | Y | Y | Y | Y | Y | Y | Y | Y | Y | Y | Y | Y | Y | Y | | | |
| Coordination with Multiple Agencies | Y | Y | Y | Y | Y | Y | Y | Y | Y | Y | | | Y | Y | Y | Y | Y | | |
| IPDWeb or Similar Software | Y | Y | Y | Y | Y | Y | Y | Y | Y | Y | Y | Y | Y | Y | Y | Y | | | |
| Recordkeeping, Daily Reports, Administration, Project Finals | Y | Y | Y | Y | Y | Y | Y | Y | Y | Y | Y | Y | Y | Y | Y | Y | | | |
| Project Finals | Y | Y | Y | Y | Y | Y | Y | Y | Y | Y | | | Y | Y | Y | Y | | | |
| Materials Sampling and Testing | Y | Y | Y | Y | Y | Y | Y | Y | Y | Y | Y | Y | Y | Y | Y | Y | | | |
| Survey Services | Y | Y | Y | Y | Y | Y | Y | Y | Y | Y | Y | Y | Y | Y | Y | Y | Y | Y | Y |
| Environmental Monitoring | Y | Y | Y | Y | Y | Y | Y | Y | Y | Y | Y | Y | Y | Y | Y | Y | | | |
| As-Built Plans | Y | Y | | Y | Y | Y | Y | Y | Y | Y | | | Y | Y | Y | Y | Y | Y | Y |



5. References

5. REFERENCES

We promise to continue earning your confidence as the long-term trusted consultant of choice by continuously demonstrating through our actions, the highest levels of professionalism, and transparency that you have come to expect. We further promise to supply a team that is passionately and unconditionally committed to the successful delivery of your projects and, by extension, the local public agencies.

| Client Reference | E-mail address/ Phone Number | Project |
|---|--|--|
| New Hampshire Department of Transportation Dean Wilson Construction Bureau | dean.wilson@dot.nh.gov 603.271.2573 | Over 100 statewide projects, including projects and special assignments |
| City of Manchester, NH Kristen Clarke, PE, PTOE City Traffic Engineer | kclarke@manchesternh.gov 603.624.6444 | LPA - Granite & South Willow Streets - Manchester Adaptive Signals #41747 |
| On behalf of City of Burlington, VT Ken Robie, PE Municipal Project Manager | krobie@dubois-king.com 802.370.6126 | LPA - Champlain Parkway, a 1.8 mile new and reconstructed roadway connecting I-189 and Route 7 with Maine Street, along the southwest side of city |

SOUTHERN NEW HAMPSHIRE SERVICES
The Community Action Program for Hillsborough and Rockingham Counties

Mailing Address: PO Box 5040, Manchester, NH 03108
40 Pine Street, Manchester, NH 03103
Telephone: (603) 668-8010 Fax: (603) 645-6734
www.SNHS.org

Executive Director
Donnalee Lozeau, CCAP

Deputy Director
Fiscal Officer
Michael O'Shea

Chief Operating Officer
Deborah Gosselin, CCAP

Administration:
40 Pine Street
PO Box 5040
Manchester, NH 03108
Tel: (603) 668-8010

Outreach Offices in Hillsborough County:

Manchester (03103)
160 Silver Street
Tel: (603) 647-4470

Nashua (03060)
134 Allds Street
Tel: (603) 889-3440

Greenville (03045)
Greenville Falls
24 Main Street
Tel: (603) 878-3364

Hillsborough (03244)
63 West Plain Street
Tel: (603) 464-5835

Peterborough (03458)
9 Vose Farm Road, Suite 115
Tel: (603) 924-2243

Outreach Offices in Rockingham County:

Derry (03038)
9 Crystal Avenue, Suite 1
Tel: (603) 965-3029

Portsmouth (03801)
4 Curtis Street
Tel: (603) 431-2911

Raymond (03077)
55 Prescott Road
Tel: (603) 895-2303

Salem (03079)
85 Siles Road, Suite 103
Tel: (603) 895-9172

Seabrook (03874)
146 Lafayette Road
Tel: (603) 474-3507

April 17, 2017

Jim Anderson
WSP/Parsons Brinckerhoff
650 Elm St.
Manchester, NH 03101

Dear Mr. Anderson,

Congratulations on being awarded the honor of "Overall Winner" at the recent 2017 Engineering Excellence Awards luncheon for your work on Nashua's Broad Street Parkway!!

You and your "crew" were an integral part in the completion of this project that began over a half century ago. It was a pleasure working with you to see this engineering feat come to completion. It certainly came with its challenges. WSP/Parsons Brinckerhoff and the other four firms came together and pulled it off, in spite of the doubts and hurdles the project faced over the years.

I am sorry to have not been at the event last month. I certainly would have loved to be there to cheer you on had I known.

Congratulations, again! The Broad Street Parkway is an engineering wonder that will be a centerpiece in Nashua for generations to come.

Sincerely,

Donnalee

Thank you for all your efforts!

Donnalee Lozeau's letter regarding WSP's awarding-winning performance on the Broad Street Parkway Project for the City of Nashua.



6. Appendix



Resumes

6. APPENDIX 6.1 - RESUMES

JAMES D. ANDERSON

Lead Manager and Technical Advisor

Career Summary

Mr. Anderson has extensive construction delivery experience in the role of operations manager, project manager, construction manager, project engineer, resident engineer, clerk of the works, and owner's site representative. He has demonstrated ability in leading multi-player teams to plan, direct, and control the construction process from pre-bid through project close-out, on municipal projects, where numerous funding sources are utilized, and managed. His specialties include constructability reviews, claims avoidance, contract and bid document formation, and project execution.

Registrations/Training

Certified NHDOT Local Project Administrator, Part 1 and 2 (1297); Certified Maine DOT Local Project Administrator; OSHA 40-hour HAZWOPER Safety; OSHA 10-hour Safety; OSHA Confined Space; Certificate, Drilled Shaft Construction & Inspection; Certificate, Claims and Changes Management

Representative Project Experience

New Hampshire Construction Engineering & Inspection, Concord, NH: Since 2009, CEI Manager for multi-year, on-call task order contract providing statewide construction services to the NHDOT Construction Bureau. Primary client interface identifying, assigning and supervising personnel on some 50 various projects, i.e. the Memorial Lift Bridge Replacement Project, the I-93 Widening, small bridge span repairs or replacement over the Sugar River, the Enfield Route 4A road and reconstruction project, the annual Eastern Turnpike Paving Program, and many rural bridge, pavement preservation and traffic calming projects.

Champlain Parkway, Burlington, VT: CEI Manager for this \$42M (LPA) 2.5-mile urban roadway project that connects I-189, and Route 7 with the downtown waterfront area. Significant elements include relocated utilities, bike paths and widened sidewalks, esplanades with period lighting, contaminated soils removal, ½ dozen new signalized intersections, full depth reconstruction, reconstructed Amtrak/VRS at-grade railroad crossings, with new signalization, and new construction, storm drainage and permanent mitigation features, and enhanced streetscape. The project is approximately 60% complete.

Broad Street Parkway, Nashua, NH: The largest municipal (LPA) project ever constructed in New Hampshire. The Parkway is a \$30M, 1.8 mile two lane road that follows a route adjacent to an active Pan Am railroad, crossing the Nashua River and passing through the Historic Millyard area. Jim was the CEI manager and during the final phase of work, the resident engineer for the Fairmount Street Bridge, the multi span River Bridge, MSE Wall #2 and the Intake Dam Structure along the historic canal. Recipient of the 2017 American Council of Engineering Companies (ACEC-NH) Overall Winner for Engineering Excellence Award.

Memorial Circle Reconstruction, Town of Kittery, ME: CEI Manager for this \$1.8M (LPA) roundabout project, with nine approaches and seven private curb cuts, that includes Route 1, Route 236, Route 1 Bypass and Old Post Road. Project was substantially completed ahead of schedule, with <2% change orders.



Years with the Firm: 32

Years Total: 45

Education: AS, Civil Engineering Technology

University of New Hampshire

SHAUN FLYNN, PE

Project Manager / Construction Engineer of Record

Career Summary

Mr. Flynn has close to four decades of NHDOT construction engineering, inspection and administration experience. After college graduation, and a stint with a site civil engineering and surveying firm, he started and finished his career with the State, as District Construction Engineer. Known for his collaborative, successful stakeholder approach to project delivery, he is a key member of WSP's LPA CEI Team.

Registrations/Training

Professional Engineer (NH); NHDOT LPA Certification, Parts 1 and 2 (pending); NHDES Subsurface Designer #01224; OSHA 10-hr Safety

Representative Project Experience

New Hampshire Construction Engineering & Inspection, Concord, NH: Since 2009, CEI Manager for multi-year, on-call task order contract providing statewide construction services to the NHDOT Construction Bureau. Primary client interface identifying, assigning and supervising personnel on some 50 various projects, i.e. the Memorial Lift Bridge Replacement Project, the I-93 Widening, small bridge span repairs or replacement over the Sugar River, the Enfield Route 4A road and reconstruction project, the annual Eastern Turnpike Paving Program, and many rural bridge, pavement preservation and traffic calming projects. **New Hampshire Department of Transportation, District Construction Engineer:** For nearly 18 years, supervised and managed roadway and bridge projects throughout the southwestern and northern portions of New Hampshire. Duties included personnel assignments, oversight and performance reviews, field modifications, change orders, conflict avoidance and resolution, and contract compliance. Collaborated with other NHDOT Bureaus, other State Agencies, Municipalities, and Federal Highway Administration (FHWA) in the development and review of contract documents for bid.

NHDOT, Assistant Resident Engineer/Resident Engineer/Contract Administrator: For nearly 20 years, he was responsible for on-site management and oversight of highway and bridge construction projects ranging in scale from basic projects to complex multi-million dollar projects. Assignments included: Easton, NH Route 116 roadway; Franconia Notch Parkway/I-93 roadway and bridges; F.E. Everett Turnpike Expansion roadway and bridges; City of Laconia Elm Street bridge replacement; and many interstate and NH Route pavement rehabilitation and resurfacing projects. Assignments included: Easton, NH Route 116 roadway; Franconia Notch Parkway/I-93 roadway and bridges; F.E. Everett Turnpike Expansion roadway and bridges; City of Laconia Elm Street bridge replacement; and many interstate and NH Route pavement rehabilitation and resurfacing projects.



Years with the Firm: <1

Years Total: 39

Education: BS, Civil Engineering, New England College

TONY ASHENDEN, ACI, NETTCP Technician Inspector III

Career Summary

Tony is a seasoned construction inspector with cast-in-place concrete, precast concrete, soils, and paving inspection and documentation experience. Most recently, he supported the NHDOT Construction Bureau with a statewide sign project, where his ability to use independent judgement, combined with his keen understanding of specification and installation standards, made him a key member of the DOT's extended field staff.

Registrations/Training

OSHA 10-hour Certificate; NETTCP Concrete Inspector (#1200); NETTCP Soils & Aggregate Inspector; NETTCP HMA Paving Inspector (#3679) NETTCP HMA Plant Technician (#1301M); ACI Concrete Field Technician - Grade 1 (#01303048); ACI Special Inspector (pending); Precast Concrete Institute - Level II (#1812531)

Representative Project Experience

Multiple NHDOT Sign Replacement Projects, Statewide, NH: Responsible for monitoring sign layout and adjusting as necessary, due to above ground conflicts. Observing and ensuring that maintenance of traffic plans is being followed. Inspected, documented and updated IPD daily \$1.7M. Also inspected Epping-Hampton-Manchester: grooved retroreflective polyurea pavement marking Districts 5 and 6. Senior inspector monitoring contractor hours and activities. Ensuring groove depth and product thickness meets required specifications. Observe and ensuring that maintenance of traffic plan is being followed. Inspected, documented and updated IPD. Combined project values exceeded \$3M.

KATIE CONNELLY, EIT

Engineer Inspector II

Career Summary

Katie has an excellent reputation as an organized individual, adding value to construction projects through her roles in construction management, project engineering, inspection, and design on buildings and roadways. As a Project Engineer, she has managed construction contracts for heavy civil projects, working extensively with construction documentation: producing RFIs, technical submittals, QC checklists, change orders, as-builts, punch lists, daily reports, and other project records. project records. all while managing the ongoing coordination between clients, contractors, designers, and third parties.

Registrations/Training

EIT (ME). ACI Concrete Field Testing Technician-Grade 1, #02072083; NH LPA Certification Parts 1 and 2 (2023); MaineDOT LPA Certification (2020); OSHA 10-hr safety; confined space safety; FHWA work zone design

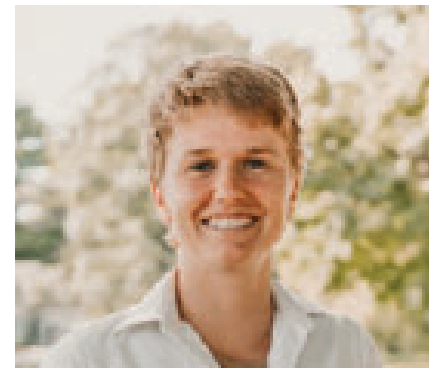
Representative Project Experience

Granite and Willow Street Adaptive Signals, Manchester, NH: Construction Inspector for this \$1.4M (LPA) project, updating 23 different signalized intersections along some of the busiest streets in the City of Manchester. Acting as the primary onsite inspector representing the client throughout construction. Working closely with the PM to complete project engineering tasks such as developing redlines, tracking schedule milestone, writing progress reports, daily reports, compiling quantities for pay requisitions, reviewing submittals, and ensuring work is performed in accordance with the project expectations and design requirements.

Champlain Parkway, Burlington, VT: Construction Inspector for this \$44M (LPA) 2.5-mile urban roadway project that connects interstate and highway traffic with the downtown waterfront area of the City of Burlington. Major aspects involve new and relocated utilities, storm drainage, permanent runoff mitigation features, and full depth roadway reconstruction. By quickly integrating herself with the team and familiarizing herself with the project, she was able to step into her role seamlessly. Using APPIA and Doc Express, a web-based platform for managing the construction administration process. Katie spent time using Trimble surveying equipment for as-built documentation.



Years with the Firm: <1
Years Total: 25
Education: High School



Years with the Firm: 3.5
Years Total: 4
Education: BS, Civil Engineering, University of Maine



TYLER FENTON, EIT

Engineer Inspector II

Career Summary

Tyler is a civil engineering graduate with 12 years of construction engineering, inspection and administration experience. Tyler started his career with the NHDOT and has either inspected or managed bridge, roadway and paving projects, from ground-breaking through closeout.

Registrations/Training

EIT, New Hampshire, 2012 (6023); NHDOT LPA Certification, Parts 1 and 2; ACI, Concrete Field Testing Technician I (01317582); NETTCEP, HMA Pavement Inspector (3219); ATSSA, Traffic Control Design Specialist Training (2014); NHDOT LPA Parts 1 and 2 (#2101)

Representative Project Experience

Granite and South Willow Streets Adaptive Signals, City of Manchester, NH: \$1.4M LPA project. Tyler is the Contract Administrator for this signalized intersection upgrade project, at 23 separate locations, along some of the busiest streets in the city. The equipment replacement and upgrade include controllers, software, advance vehicle detection, remote cabinet communication, signal optimization and retroreflective backplates. The work includes continuous city and designer interface, and coordination with NHDOT Districts and the Turnpike, due to work along the interstate ramps.

Civil Engineer II and Civil Engineer I, Bureau of Construction, NHDOT: As Civil Engineer I, served as Contract Administrator for an \$800k resurfacing and guardrail repair contract on I-93. Sole resident engineer under Contract Administrator on a 2-year, \$5.9M bridge replacement project completed on time and on budget. As Civil Engineer II, worked as resident engineer on two roadway rehabilitation projects simultaneously with multiple contractors.



Years with the Firm: 6
Years Total: 12
Education: BS, University of New Hampshire

ZACHARY KIRLIN

Technician Inspector II

Career Summary

Zach has a varied resume with WSP and several other construction firms in northern New England, as well as service in the US Marine Corps. In addition, he was a construction services technician with WSP's subcontractor for LPA contracts, SW Cole Engineering, where he was responsible for concrete, soils, asphalt lab and field construction sampling and testing for projects in Maine and New Hampshire.

Registrations/Training

NETTCP Asphalt Plant Technician #1356, NETTCP Paving Inspector #3528, NETTCP Concrete Lab Technician (pending), NETTCP Precast Concrete Inspector (pending), ICC Soils Special Inspector, ICC Structural Masonry Special Inspector, ACI Level I Inspector

Representative Project Experience

Champlain Parkway, Burlington, VT: Construction Inspector for this \$44M (LPA) 2.5-mile urban roadway project that connects interstate and highway traffic with the downtown waterfront area of the City of Burlington. Major aspects involve new and relocated utilities, storm drainage, permanent runoff mitigation features, and full depth roadway reconstruction. Oversaw contractor paving operations, from site mix checks to lay down, and finish. Also oversaw some 5000 feet of urban traffic marking installation. Inspected over 3500 tons of polymer modified HMA shim, patching, binder and surface coat placement. Monitoring and interface for maintenance of traffic operations, in this urban area. Responsible for construction inspection, documentation and coordination. Routinely, tracked, calculated and reported quantities. Used APPIA and Doc Express, a web-based platform for preparing construction field reports, which included pay quantities.

I-295 South Portland to Falmouth, ME: As part of the RE team for MaineDOT's Highway Program, mill and fill overlay using polymer modified asphalt with new striping, along with drainage improvements, replacement of bridge plug joints, guardrail. Responsible for construction inspection, documentation and coordination. Routinely, tracked, calculated and reported quantities. Oversaw contractor paving operations, from site mix checks to lay down, and finish. Monitored MPT operations. Responsible for monitoring supplier QC activities.



Years with the Firm: <1
Years Total: 11
Education: BS, Criminal Justice, Husson University

BRIAN ORDWAY

Technician Inspector III

Career Summary

Brian is a NHDOT Construction Bureau retiree with over 40 years of experience who has exclusively overseen NHDOT, and a few LPA bridge projects valued to \$25M, including interstate highway reconstruction and bridge replacements in the Lebanon and Hanover area.

Registrations/Training

ACI Level I (expired); NETTCP (expired)

Representative Project Experience

- Multiple I89 NB and SB highway and bridge rehabilitation projects since 2017, in the Lebanon to Hanover area, with a combined value of \$45M
- Town of Bath Historic Covered Bridge Reconstruction, May 2013 to Aug.2014- CA
- NHDOT Lebanon Rte.4, Connection River Bridge Aug. 2014 to June 2016- ACE supporting the NHDOT Construction Bureau on this bridge and road reconstruction project.
- 1-89 Sewer Crossing and Route 120/Etna Road Sewer Upgrade, June 2016 to June 2017 - CA for the City of Lebanon on this sewer crossing project.
- ACA for NHDOT- Misc. Resurfacing Projects & the 1-89 Grantham-Enfield Safety Improvement Project, June 2017 to December 2017 - ACA for these misc. projects



Years with the Firm: 6

Years Total: 45

Education: AAS, Civil Engineering Technology, Vermont Technical College

CLINTON SMITH, EIT

Technician Inspector III

Career Summary

Clint Smith has over 15 years of experience in bridge, highway and maritime construction, engineering, program management, and inspection. Clint has been involved in new construction, reconstruction or rehabilitation throughout New England. Clients include Maine, New Hampshire and Connecticut Departments of Transportation, municipalities agencies, and port authorities.

Registrations/Training

NH Engineer in Training, #5683; NICET III - Highway and Bridge; ACI Level I #01186738; Certified NETTCP HMA Inspector #2575; ATSSA Traffic Supervisor and Technician #274225; OSHA 10hr Safety Trained)

Representative Project Experience

I-95 Piscataqua River Bridge Rehabilitation and Operation / Safety Improvement

Project: Clint is the Assistant Resident Engineer on behalf of the MaineDOT's multi state, multi stake holder project spanning the Piscataqua River between New Hampshire and Maine. Clint provides daily coordination with inspection & contractor staff, prepares or edits Daily Work Reports within Mobile Inspector used in conjunction with AASHTO Field Manager. He also assists the Resident Engineer with generation of progress payments, attends progress meetings, and action resolution.

NHDOT Statewide On-Call Construction Engineering and Inspection Services, New Hampshire: Senior Construction Inspector/Office Engineer on the \$34.2 million I-93 Corridor Salem- Manchester Project# 14633I. Work elements along this approximate 2.2-mile north and south bound corridor include the widening of roadway (2 lanes each direction), bridge demolition/widening/reconstruction and drainage improvements of a major NH highway with 44,000 vehicle/day.



Years with the Firm: 14

Years Total: 16

Education: BS, Civil Engineering Technology, University of New Hampshire (in process); AS, New Hampshire Technical Institute



Applicable Work Experience

6. APPENDIX 6.2 - APPLICABLE WORK EXPERIENCE

Our New Hampshire offices have successfully served the northern New England area for almost 25 years with construction engineering and inspection services. Starting with Vermont’s Missisquoi Bay Bridge replacement some 20-years ago, to New Hampshire’s innovative Route 101 Auburn- Candia highway paving and bridge rehabilitation, to the Memorial Bridge Replacement, to the annual Maine Turnpike paving projects, to Peterborough’s Union Street reconstruction and Nashua’s Broad Street Parkway, both LPA projects, WSP has overseen and inspected hundreds of traditional DOT projects. We are currently under contract with transportation agencies, or municipalities, in all New England states, including NHDOT, the City of Burlington, VT (LPA), the City of Manchester, NH (LPA), the cities of Stamford and Meriden, CT (LPA), Vermont Agency of Transportation, the Maine Department of Transportation, the Maine Turnpike Authority, the Rhode Island Public Transit Authority, the Massachusetts Department of Transportation and the Connecticut Department of Transportation. Most importantly, we have qualified staff, many with relevant LPA type project experience who reside in New Hampshire or nearby Vermont and Maine border locations that can respond rapidly to NH cities and towns. WSP has been selected multiple times to provide a wide variety of construction engineers and inspectors. Here are a few project snapshots.

LOCAL PUBLIC AGENCY - Construction Engineering and Inspection

- ▶ **Broad Street Parkway, Nashua, NH:** The Parkway is a \$35M, 1.8-mile, 2-lane roadway that follows a route adjacent to an active PanAm railroad, crossing the Nashua River and passing through the Historic Millyard area, before tying into the existing Pine Street. WSP was part of a consolidated team reporting to the Nashua Department of Public Works helping oversee the largest municipally managed, federally funded transportation project ever built in NH. Our field team provided resident engineering, construction inspection and contract administration for all structural elements which included three bridges – Baldwin Street, Nashua River and Fairmount Street – along with three major retaining walls, and the Intake Dam Structure at the Canal. Because of the overlapping roadway and bridge approaches, we routinely inspected and documented site/civil work. Unique elements included large diameter drilled shafts, tapered steel girders, brick pilasters and period lighting, multiple 30'+ MSE walls separating the new road from the Nashua River, and a historic re-laid stone wall, helping form the Canal Outlet area. WSP leveraged their knowledge of NHDOT’s inspection policies and procedures, the (LPA) Municipal Manual and FHWA expectations in full support of the City of Nashua and its lead contract administration consultant. WSP’s record keeping was instrumental in helping the City successfully defend against a \$1.5 million drilled shaft, differing site condition claim. The project was recognized as the 2017 NHACEC Engineering of Excellence Overall Winner, for design, construction engineering and inspection. *WSP Staff: Jim Anderson, Brian Latham.*
- ▶ **TIF District Improvements, Peterborough, NH:** Redevelopment revitalization of the West Peterborough district including the reconstruction of Union Street. This \$2.5M (LPA) project included the reconstruction of 1.2 miles of Union Street with new sidewalks, upgraded utilities, drainage improvements, traffic calming measures, on street parking and streetscape improvements. *WSP Staff: Jim Anderson*
- ▶ **Whittier Street Bridge Replacement, Dover, NH:** This \$4M (LPA), 155’ single-span bridge replacement project, over the Cocheco River. The replacement including realigning the roadway and profile, and constructed a new sidewalk, with other enhancements. *WSP Staff: Tim Higginson.*
- ▶ **NH Route 12 over Beaver Brook Box Culvert Replacement, Keene, NH:** This \$2.1M (LPA) project replaced red list twin plate arch culverts, along one of the busiest stretches of this local arterial roadway. *WSP Staff: Tim Higginson.*

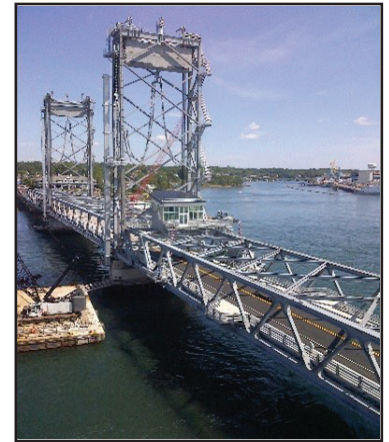


- ▶ **Champlain Parkway, City of Burlington, VT** – WSP was selected in 2018 to provide full construction engineering and inspection for this \$38M (LPA) project, that connects I-189, and Route 7 with the downtown, along the southwest side of the City. Significant elements include relocated utilities, bike paths and widened sidewalks, esplanades with period lighting, contaminated soils removal, and ½ dozen new signalized intersections, and major Amtrak railroad crossing upgrades. The project began in 2022 and is scheduled to finish in 2026. *WSP Staff: Jim Anderson, Shaun Flynn, Josh Illsley, Damian Wise, Neil Mechlin, Emmitt Lambert, Zach Kirlin. Sub: SW Cole*
- ▶ **Memorial Circle Reconstruction, Town of Kittery, ME:** This \$1.8M (LPA) roundabout project, with nine approaches and seven private curb cuts, that includes Route 1, Route 236, Route 1 Bypass and Old Post Road was a complete reconstruction. Significant coordination with stakeholders due to traffic volumes related to the Portsmouth Naval Shipyard. Project was substantially completed ahead of schedule, with <2% change orders. *WSP Staff: Jim Anderson*



NHDOT - Construction Engineering and Inspection

- ▶ **Memorial Bridge Replacement Project:** As part of the QA/QC oversight team on this award winning \$81M design-build project, WSP was responsible for all document control activities and periodic inspection activities from substructure through punch list activities. *WSP Staff: Jim Anderson, Clinton Smith*
- ▶ **Route 101 Auburn-Candia Highway Paving and Bridge Rehabilitation:** A \$13.4M, ‘green’ award winning 13-mile project that included 7 bridges and the use of 6 distinct types of hot mix asphalt. WSP was responsible for both day and night shift inspection, and assisted with quantity tracking, calculations, documentation, and CMS input. *WSP Staff: Jim Anderson, Clinton Smith*
- ▶ **Lebanon, NH-Hartford, VT Bridge Replacement #14957:** An approximate \$10.6M replacement of the Route 4 Bridge over the Connecticut River. WSP was responsible for inspection of the existing bridge deck removal, drainage work on Transfer Station Drive, cast-in-place concrete for substructure elements, entering quantities in CMS, completing daily reports, and setting up final record books. *WSP Staff: Jim Anderson, Brian Ordway*
- ▶ **Route 12/119 Traffic Calming:** \$0.75M turning lane, and safety signage and marking project in Fitzwilliam. Responsible for inspection and construction administration support. *WSP Staff: Jim Anderson*
- ▶ **Statewide Tier 2 Crack Sealing:** A reflection of the WSP staff’s flexibility, and versatility this \$1M project covered the Towns of Bethlehem, Colebrook, Carroll, Wentworth, Lancaster, Warren, Rumney and Lebanon. WSP was responsible for maintenance of traffic, coordination, inspection and construction administration support, while working independently in these remote locations. *WSP Staff: Jim Anderson, Josh Illsley*
- ▶ **US Route 4 over NH Route 108 and over Route 155A:** \$6.3M bridge deck and highway resurfacing project in Durham and Lee. Rehabilitation and replacement of elastomeric bridge bearings, portions of concrete deck and wing walls. WSP’s role included sounding concrete bridge deck for partial and full depth patching, testing concrete, and inspecting temporary jacking supports for the removal and reinstallation of elastomeric bridge bearings. *WSP Staff: Jim Anderson, Clinton Smith*
- ▶ **Route 33 Safety Improvements:** Widening existing intersection in Greenland to add left turn lanes and replacing existing flashing light with new signalized intersection. *WSP Staff: Brian Latham*
- ▶ **I-93 Widening:** WSP has been involved with the widening from Exits 1-5 in multiple roles from construction inspection to environmental compliance to construction administration support, for this multi-million-dollar project. *WSP Staff: Jim Anderson, Clinton Smith, Brian Latham*

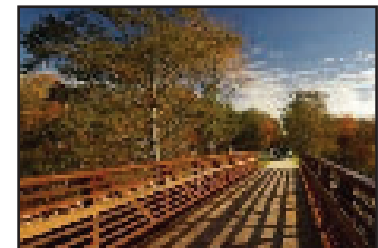


OTHER NORTHERN NEW ENGLAND - Construction Engineering and Inspection

- ▶ **Kennedy Drive Reconstruction, Vermont:** Inspection and documentation for this \$7M LPA project, which included full depth reconstruction, with widening to four lanes, for this arterial roadway connection between

I-89 and Burlington International Airport. In later phases, WSP was asked to assist with overall construction administration, schedule analysis and claims avoidance due to ongoing difficulties with the contractor. WSP Staff: *Jim Anderson*

- ▶ **Weathersfield Historic Replacement, Vermont:** Inspection of this \$0.9M project rehabilitating a 130' wooden span covered bridge over the Black River. WSP Staff: *Jim Anderson*
- ▶ **Colchester STP BP19001-1, Vermont:** WSP was the sole site representative for the fast track 3-mile repair of the Lake Champlain Rail Trail. The bike path was heavily damaged in the spring of 2018 and was declared impassable. Using a Contractor IDIQ approach the work was started and the trail was re-opened in 11 days, for approximately \$0.3 Responsible for inspection, contract administration and coordination between VTrans, Town of Colchester, Local Motion and Vermont Dept. of Wildlife. WSP Staff: *Jim Anderson, Gordon Eastman*
- ▶ **South Burlington STP SCRP (8), Vermont:** The replacement of an existing twin, stone culvert on VT Route 116 (Hinesburg Road) carrying Potash Brook was with precast concrete elements. Unique work elements included stream relocation and installation of a new 14' x 8' x 115' box culvert, controlled density fill and almost \$100k worth of permanent wetland mitigation soils, plantings and trees. WSP Staff: *Jim Anderson, Tyler Fenton*
- ▶ **Jamaica Bridge Replacement, Vermont:** Located on Town Highway 43 off State Route 100, this \$0.75M project replaced a 1936 truss structure taken out of service in 1997. It was replaced with a new integral abutment steel girder bridge, spanning Wardsboro Brook, with improvements to approaches on both sides. WSP was the sole site representative on this unique, rural project. WSP Staff: *Jim Anderson*
- ▶ **I-95 Waterville to Pittsfield Paving, Maine:** This \$6.1M project included 17 miles of mill & fill and reclaiming, along with drainage improvements and guardrail replacement. WSP Staff: *Jim Anderson*
- ▶ **Washington/Allen Avenues Intersection Improvements, Portland, Maine:** Inspection and administration on this \$1M State / City intersection project, with new signals, turning lanes, sewer and storm drainage. WSP Staff: *Jim Anderson*
- ▶ **Main Street over the Salmon Falls River, Berwick, ME:** WSP supervised DOT inspectors and performed contract administration on this \$1.4M, 0.6-mile full depth reconstruction project, that included the rehabilitation of the NH/ME bridge crossing. WSP Staff: *Jim Anderson*
- ▶ **Kennebunk - Biddeford Rails to Trails, Maine:** Resident engineering, inspection and administration on this \$1.8M ARRA project, which converts the former Eastern Railroad corridor to a 6.2-mile pedestrian and bicycle trail. WSP Staff: *Jim Anderson*
- ▶ **Pedestrian Improvement Project, Kittery Maine:** This \$0.25M project involved construction of sidewalks, ADA ramps with detectable warnings, islands, and rapid flashing beacons (RFBs) to improve pedestrian safety across Route 1 on Badger's Island. WSP Staff: *Jim Anderson*
- ▶ **Multiple Bridge Rehabilitations from York to Augusta:** WSP has provided construction administration and inspection for almost two dozen bridges, with combined values exceeding \$40M. Elements include steel girder replacement, or jacking of superstructure, pavement and membrane replacement, concrete deck, fascia and overhang, pier and abutment repairs, end post replacements, bridge joint and drain replacements, bearing bolsters and shim installations, approach reconstruction, guardrail modifications, protective coatings, and significant maintenance of traffic. WSP Staff: *Jim Anderson, Marty Jerkin*





WSP USA
10 Al Paul Lane
Merrimack, NH 03054

603-324-0891
wsp.com